

NCPC File #: 7862

Lower Zoo Kiosk and Bandshell

Smithsonian National Zoological Park

Washington, DC

Smithsonian Institution

Preliminary and Final

Commission meeting date: March 2, 2017

NCPC review authority: Federal Projects in the District 40 U.S.C. § 8722(b)(1) and (d)

Applicant request: Preliminary and final approval of site and building plans

Delegated / consent / open / executive session: Delegated

NCPC Review Officer: Lee

NCPC File number: 7862

Project summary:

The Smithsonian Institution (SI) has submitted preliminary and final site and building plans for the new *Friends of the National Zoo (FONZ) Lower Zoo Kiosk and Bandshell*. The Smithsonian National Zoological Park is located on 163 acres of parkland within Rock Creek National Park, in northwest Washington, DC. The project is located west of the National Zoo's Lower Entry, along Olmstead Walk. The Lower Entry to the Zoo is the entry point from Harvard Street, Beach Drive, and two of the Zoo's parking lots. The FONZ Kiosk and Bandshell are located just beyond this entrance.

The project includes construction of two small pavilions to replace existing structures with more functional and attractive ones to serve the Lower Zoo entrance areas. The existing kiosk and bandshell are visually unpleasant and detract from the visitor experience. The project includes a total of 1,410 square feet and comprises a new kiosk, stroller storage, vending area and bandshell. It also entail landscape improvements, tree preservation and stormwater management.

The existing kiosk serves as a point for Zoo visitors to gather information, pay for parking and rent strollers or wheelchairs. The existing kiosk is a small pre-fabricated structure in poor condition. The primary transaction window is an unenclosed opening, counteracting any conditioning of the interior space. The strollers are stored in an adjacent gated enclosure covered with a tarp to protect against the elements. In front of the stroller corral, vending machines are located along Olmstead walk, and are one of the first things visitors see upon entering the park. The existing bandshell serves as a performance and event space, it sits to the east of the kiosk. It is a concrete pad with a tensile tarp structure which provides shelter from the elements. The front of the bandshell faces Lion/Tiger Hill, while providing a direct view at the rear of the kiosk and stroller storage.

The new information kiosk and rental stroller storage will provide conditioned space for employees, enclosed vending machines, protection for strollers and wheelchairs from the elements. The new bandshell with its permanent curved roof will provide an attractive space for performances, special events and activities on Lion/Tiger Hill. Together these structures will enhance the visitor experience. The materials selected reflect the existing character of the Zoo, using the existing Police Station and Restrooms as a precedent. The material include Corinthian Granite stone, and glass.



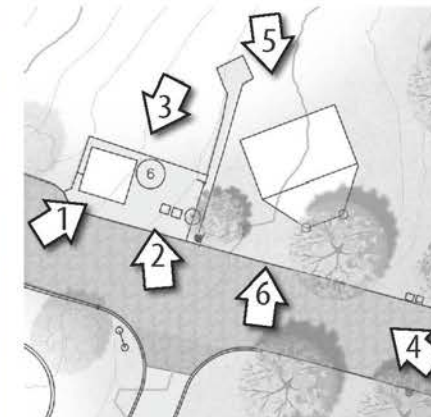


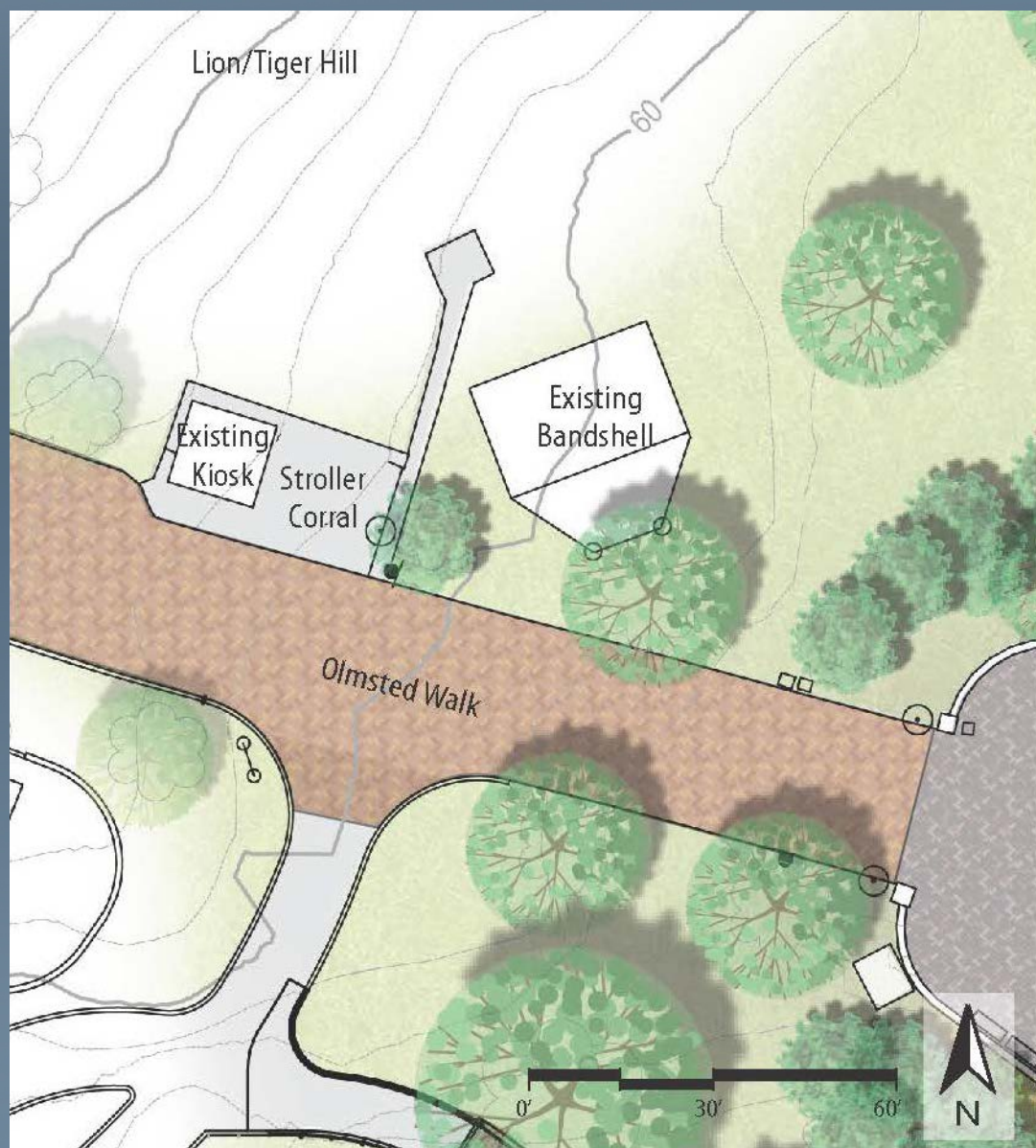
Left: Lower Precinct Master Plan, National Zoo Comprehensive Facilities Master Plan, 2008

Right: Illustrative Master Plan from Lower Zoo Precinct Plan, 2009



1. Existing FONZ kiosk and vending machines seen from the west
2. Existing FONZ kiosk and vending machines on Olmsted Walk.
3. Rear of existing kiosk and stroller storage.
4. View from Lower Entry to existing bandshell.
5. Existing bandshell seen from Lion/Tiger Hill
6. Existing conditions of bandshell.





Existing Plan of Kiosk, Stroller Storage and Bandshell



Proposed Plan of Kiosk and Bandshell



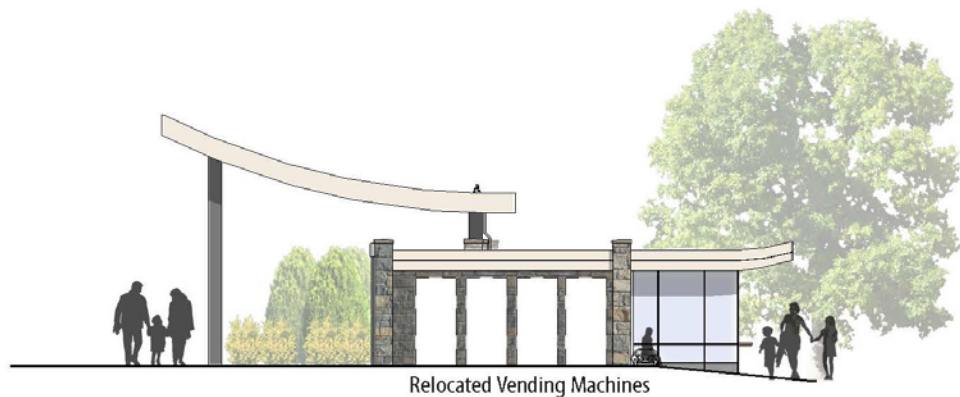
FONZ Kiosk and Bandshell Roof Plan

■ Bandshell	Copper standing seam metal roof
■ Stroller Storage & FONZ Kiosk	Thermoplastic polyolefin roof

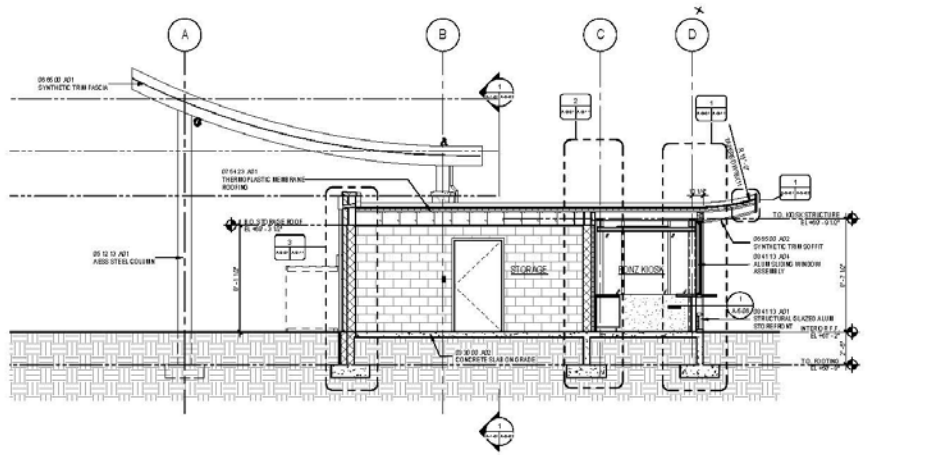


FONZ Kiosk and Bandshell Floor Plan

■ FONZ Kiosk	85 sf
■ Stroller Storage	100 sf
■ Vending Area	75 sf
■ Bandshell	1150 sf



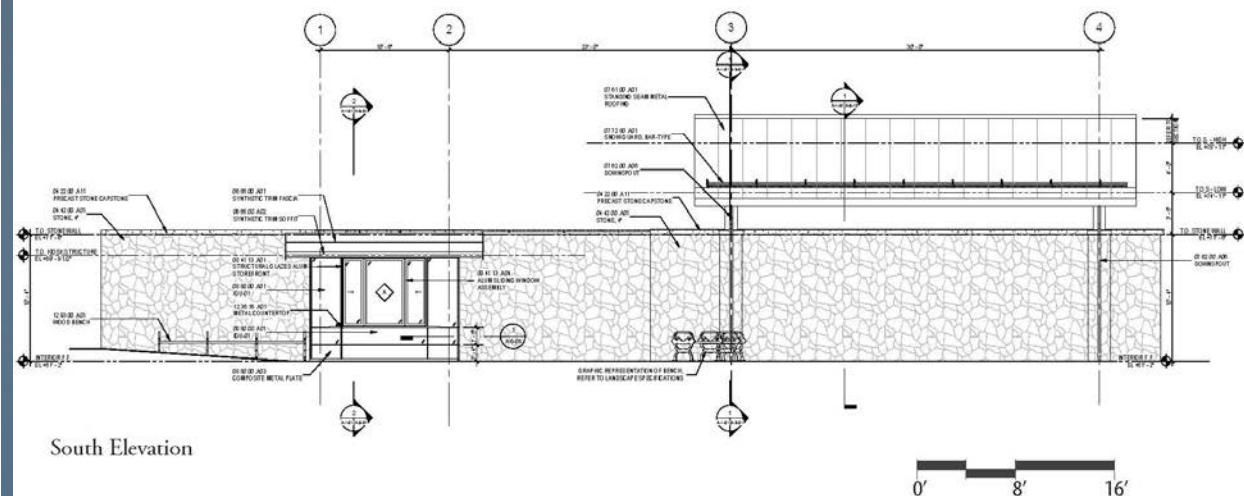
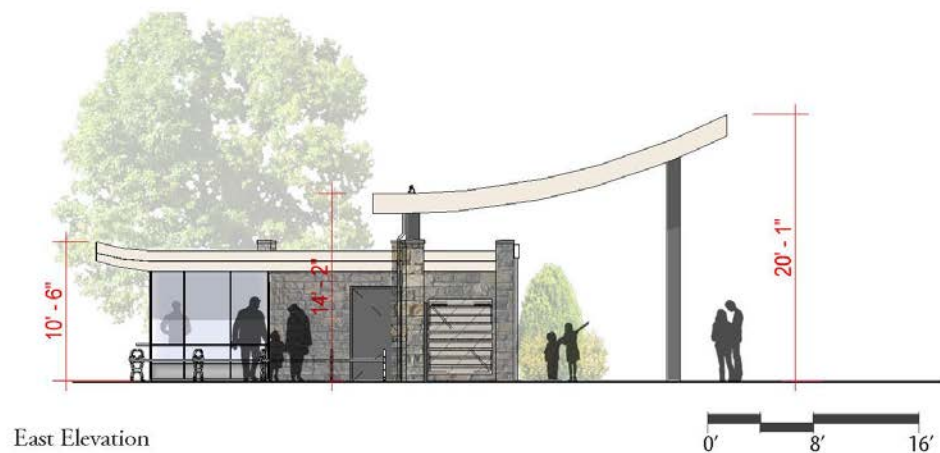
West Elevation

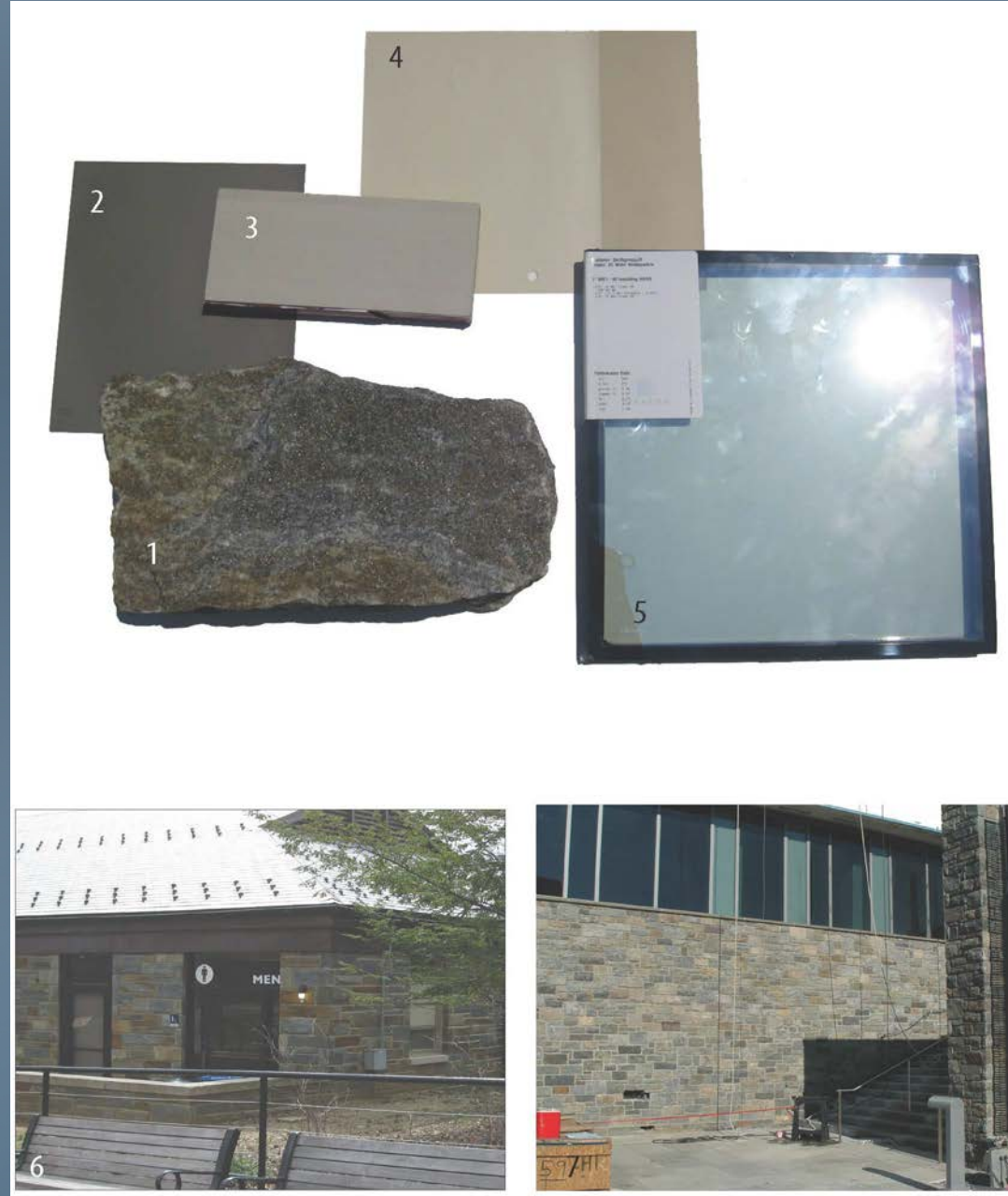


Building Section



View from Olmsted Walk





1. Corinthian Granite, Champlain Stone
2. Column and Door Paint Color
3. Composite Wood Materials, painted
4. Exterior Paint and Trim Colors
5. Viracon VRE Low-E Glass
6. Police Station, nearby on Olmsted Walk
7. Example of Champlain Stone Corinthian Granite (USCG HQ at St. Elizabeths)



Evergreen Trees



Eastern Red Cedar

Ornamental Trees



Common Witchhazel



Heritage River Birch

Shrubs



Bottlebrush Buckeye



Northern Bayberry

Forbes & Grasses



Common Oak Sedge



Blue Woodland Sedge



Little Blue Stem



Cinnamon Fern



Wild Geranium



Beebalm



Blazing Star



Virginia Bluebells