



Smithsonian Institution

December 15, 2016

Marcel Acosta, Executive Director
National Capital Planning Commission
401 9th Street NW
North Lobby, Suite 500
Washington, DC 20004

Dear Mr. Acosta:

This is to request the Commission's combined Preliminary and Final approval for our project *National Zoological Park – Flamingo HPAI Mitigation Netting & Habitat Modifications*. As discussed at our meeting with agency staff last week, the maintenance improvements that are part of this work had originally been a part of the larger Bird House Revitalization project but have now been separated so that we can expedite the additional emergency installation of netting above the flamingo yards to protect our living Flamingo collection from HPAI (Highly Pathogenic Avian Influenza) spread by wild birds. The London Zoo has just recently experienced such a devastating infection, so we are implementing the netting project as quickly as we can and request the Commission's understanding of the need to proceed.

The project includes maintenance work at the existing Flamingo area to replace wood siding on the existing shed with cement board cladding, to install a new site fence and synthetic turf and to make minor adjustments to the pool and utilities. The existing pergola at the public viewing area will remain. The Flamingo area is located to the rear of the Bird House, on the opposite side from the entrance area whose final building and landscape design review will be submitted separately for Commission approval early next year.

We expect to receive a finding of "No Adverse Effect" from the DC HPO. This project falls within the scope of the 2008-9 Master Plan and its Environmental Assessment and will not add staff or traffic to the zoo, nor alter its storm water management or tree cover.

Please call Michelle Spofford at 202-633-6558 if you have questions.

The following submission package is being forwarded separately by the Architect, Quinn Evans:

1. Three copies of the Project Submission Report
2. Electronic copy of the Project Submission Report

Sincerely,

Ann Trowbridge, AIA
Associate Director for Planning, Office of Planning and Project Management

600 Maryland Avenue SW Suite 5001
P. O. BOX 37012 MRC 511
Washington DC 20013-7012
202.633.6555 Telephone

December 15, 2016
Marcel Acosta
page 2

cc:

Dennis Kelly, Director, Smithsonian National Zoological Park

Walter Ennaco, Deputy Director, Smithsonian Facilities

Debra Nauta-Rodriguez, Deputy Director for Planning and Program Management, OPDC

Sharon Park, Associate Director for Architectural History and Historic Preservation, OPDC

Steve Sumner, Project Executive, Office of Planning, Design and Construction

Raminder Bindra, Branch Chief, Office of Planning, Design and Construction

Nancy Levan, Design Manager, Office of Planning, Design and Construction

Michelle Spofford, Architect, Office of Planning, Design and Construction



Smithsonian
National Zoological Park

NZP - Flamingo HPAI Mitigation Netting & Habitat Modifications

SF Project # 0933101
QEA Project # 31307602



DECEMBER 8, 2016

PROPOSED DESIGN - BIRD'S EYE VIEW



FLAMINGO HOLDING SHED (~554 SF)
FLAMINGO EXHIBIT YARD (~9,600 SF)

- Flamingo Holding Shed - including exterior cladding replacement and minimal utility modifications.
- Flamingo Exhibit Yard - replacement of site fencing, installation of synthetic turf, minor pool modifications, and minor site improvements.
- HPAI Mitigation Netting - including poles, foundations, and netting over the entire habitat exhibit.

PROJECT REQUIREMENTS

The following project requirements were defined for the enclosure:

- The HPAI barrier will enclose the entire existing yard.
- The HPAI barrier is required to keep wild birds out of the exhibit yard; wild birds are drawn to the yard due to the heated pool water and food.
 - The barrier will be made of 3" x 3" stainless steel woven wire mesh or smaller.
 - Hot wire is required at the perimeter to keep predators out of the yard.
 - The small pergola feature at the visitor walk is to be maintained.
 - The minimum height of the enclosure is determined by providing clear access for zoo personnel when weighted by snow and ice and a clear line of site from the visitors perspective.
- The HPAI barrier must be designed to withstand snow and ice loads.
- The barrier design should respond to the unique shape of the existing yard.
- The structural posts for the barrier netting should remain at the outer limits of the yard to the greatest extent possible.
 - Posts may be placed within the yard where the flamingos do not occupy the yard space; this includes areas along perimeter fencing, on the face of the holding shed and within the swale at the front of the yard.



PRECEDENTS - TENSILE CABLES



Flamingo Yard at the Bristol Zoo, UK

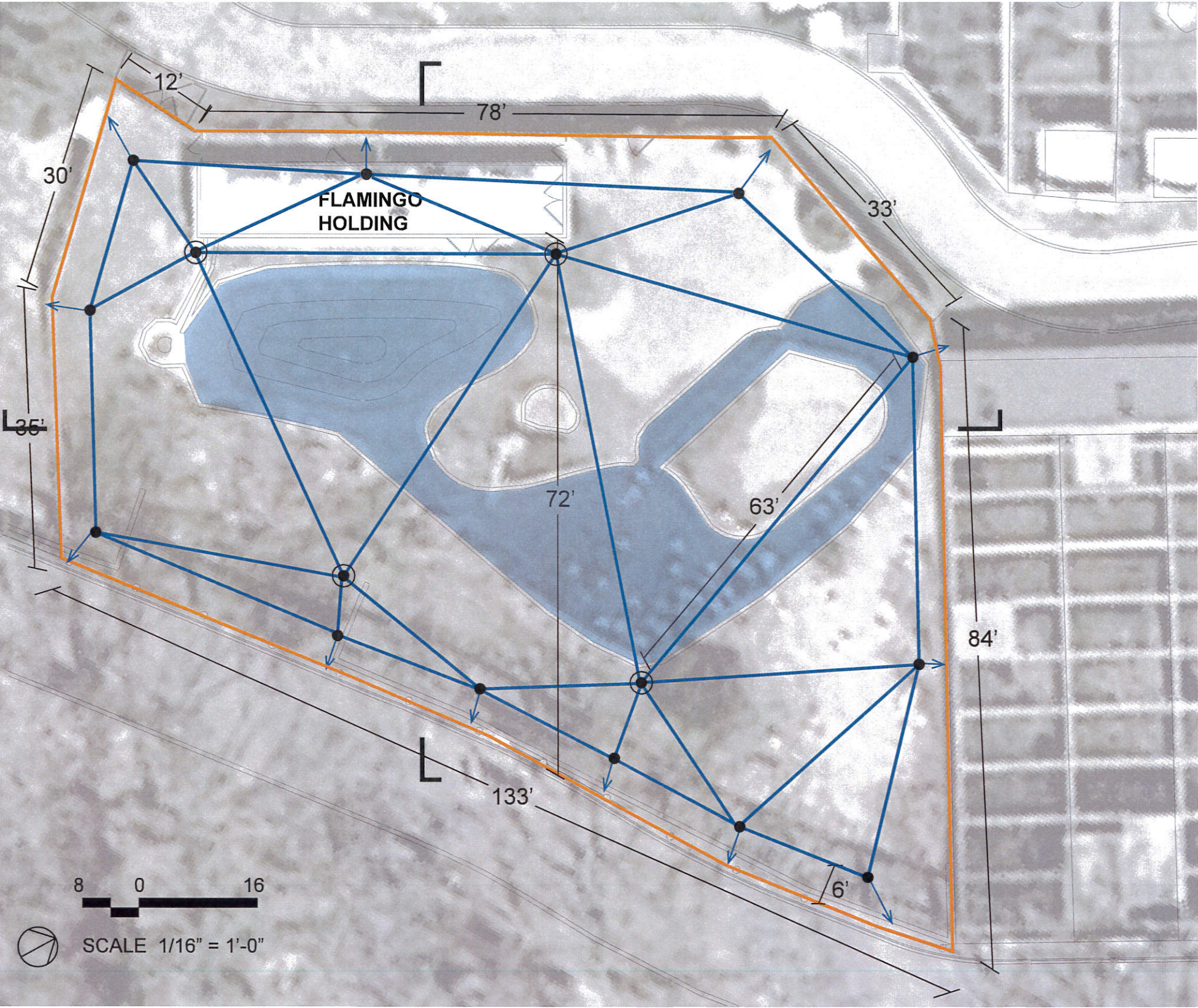
Photo: Irwin, Martin. Flamingos, and Other Birds. www.flickr.com, 2007



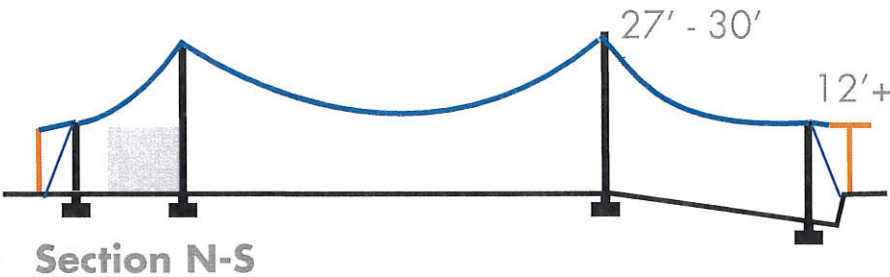
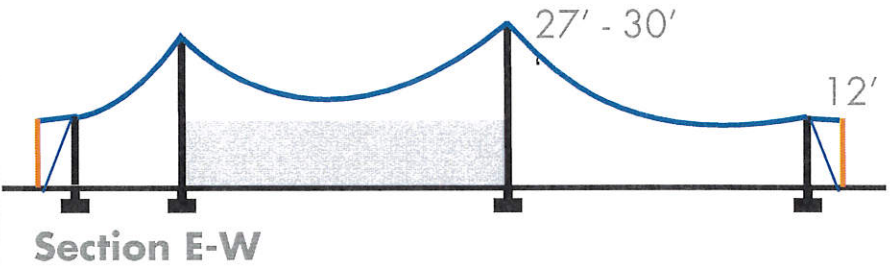
Sylvan Heights Bird Park, NC, USA

Photo: Quinn Evans Architects, 2014

SITE PLAN



Long Spans Typ.: 40' - 60'
Short Spans Typ.: 10' - 30'

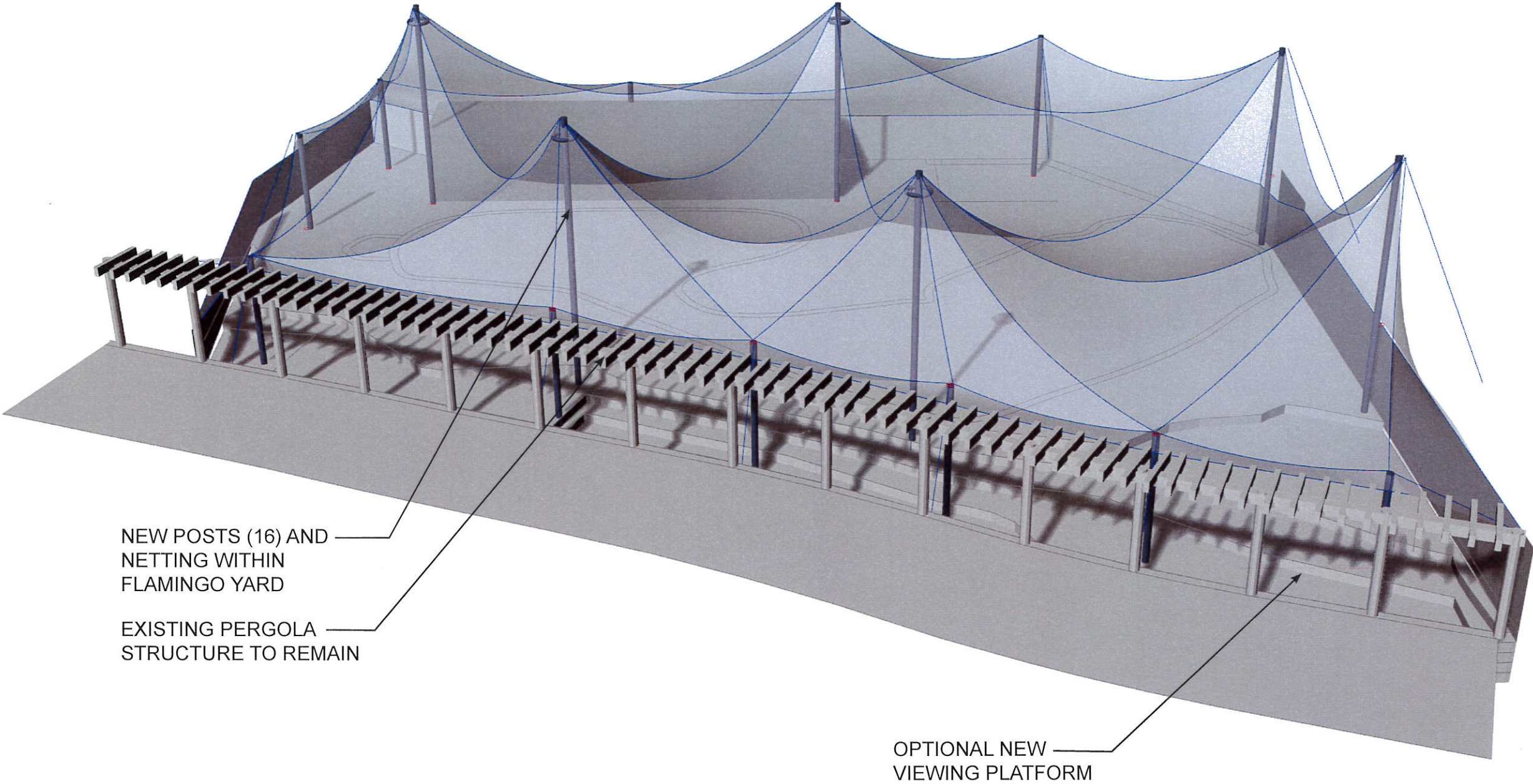


Legend

- Poles
- Cables
- ← Tie-backs
- Fence perimeter

• Approximate surface area of mesh: 12,100 sq.ft.

OVERALL



PROPOSED DESIGN - VIEW FROM THE VISITOR'S PATH





Smithsonian Institution

December 13, 2016

C. Andrew Lewis
Senior Historic Preservation Specialist
DC State Historic Preservation Office
1100 4th Street SW, Suite E650
Washington, DC 20024

Dear Mr. Lewis:

The Smithsonian Institution's National Zoological Park is planning a project for alterations to the Flamingo Yard located just south of the Bird House. The Flamingo Yard is also adjacent to the Great Flight Cage, which along with the Bird House, contribute to the National Zoological Park, a site listed in the National Register of Historic Places. Please find attached to this letter project material titled "NZIP-Flamingo HPAI Mitigation Netting and Habitat Modifications" dated December 8, 2016.

The project proposes modifications to the non-historic flamingo holding shed, including cladding replacement and utility changes. The changes to the outdoor flamingo yard include replacement of site fencing, installation of synthetic turf, and minor pool and site improvements.

A major component of the project is netting over the outdoor flamingo yard for mitigation of HPAI, which is avian influenza, that has recently spread to zoos around the world and has significantly decreased bird populations. The netting is a high priority for the Zoo, and is considered an emergency installation to create a safe habitat for the flamingos by preventing wild birds from entering the outdoor exhibit.

The HPAI netting barrier will enclose the entire yard, and consists of a 3" by 3" stainless steel wire mesh, supported by sixteen (16) posts arranged around the yard. The enclosure has been engineered to withstand snow and ice loads. The tallest posts measure between 27-30' in height, with the lower posts at approximately 12' in height. There is little flexibility on the locations of the posts, which have to be located at the outer limits of the yard and areas the flamingos do not occupy to prevent animal injury.

The Smithsonian has applied the criteria of adverse effect in accordance with CFR 800.5(a)(1) for the alterations to the Flamingo Yard, and has reached a finding of no adverse effect. While the posts and netting will be visible within the landscape, the alterations are removed from the Bird House and Great Flight Cage, and do not directly obscure or affect these structures. The netting is transparent in nature and a reversible condition, and is not out of character with bird enclosures through the exhibit. The existing concrete pergola added in 1984, and the asphalt paved walkway will remain unchanged.

600 Maryland Avenue SW Suite 5001
PO BOX 37012 MRC 511
Washington, DC 20013-7012
202.633.6535
BondC@si.edu



Smithsonian Institution

We hope that you agree with our determination of no adverse effect. Please contact me with any questions or if additional materials are required.

Sincerely,

Carly Bond
Historic Preservation Specialist

cc: Sharon Park, Smithsonian Institution
Michelle Spofford, Smithsonian Institution
Ann Trowbridge, Smithsonian Institution
Steve Sumner, Smithsonian Institution
Vivian Lee, National Capital Planning Commission
Matt Flis, National Capital Planning Commission

600 Maryland Avenue SW Suite 5001
PO BOX 37012 MRC 511
Washington, DC 20013-7012
202.633.6535
BondC@si.edu