



Presentation to the National Capital Planning Commission  
White House Complex Fence Phase 1 | July 7, 2016

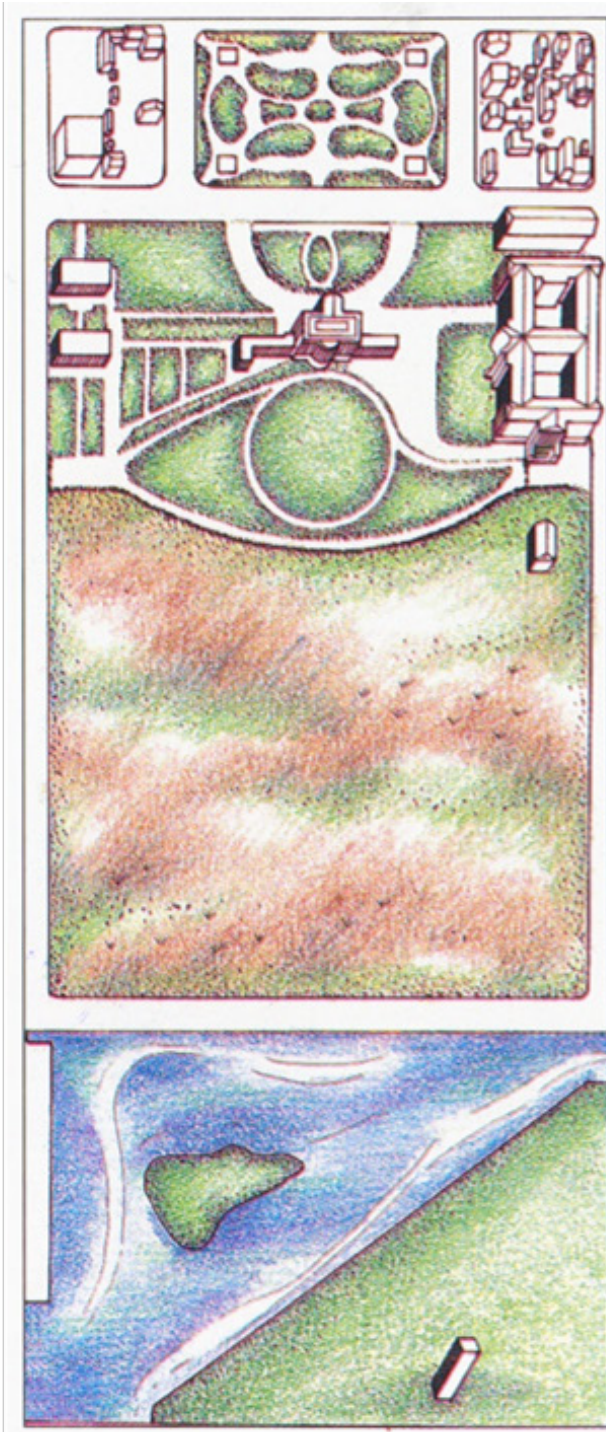
**M+S**<sup>a</sup>  
Mills + Schnoering Architects, LLC  
Architecture + Historic Preservation

- Evoke a spirit of freedom and strength for the White House and grounds
- Consider frank expression of functionality but without defensive appearance
- Study hierarchy and proportion of fence top elements to reduce heaviness
- Study fence base to balance the complexity of the top
- Preserve mature trees adjacent to fence

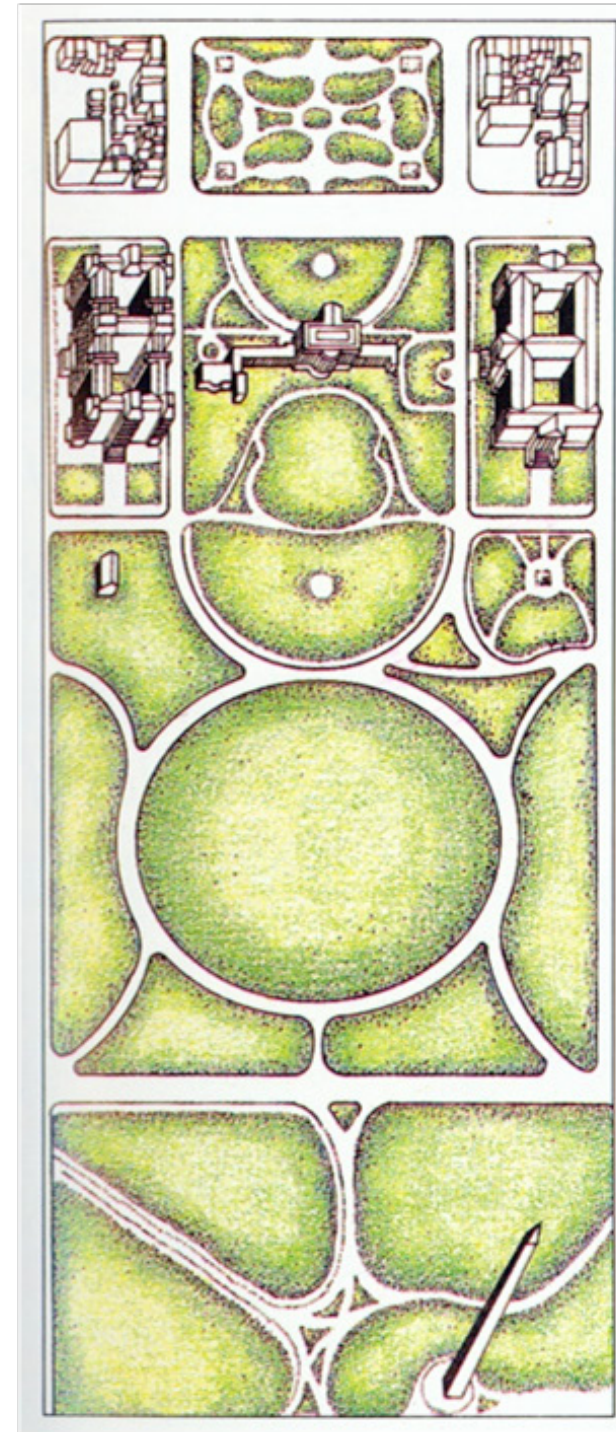




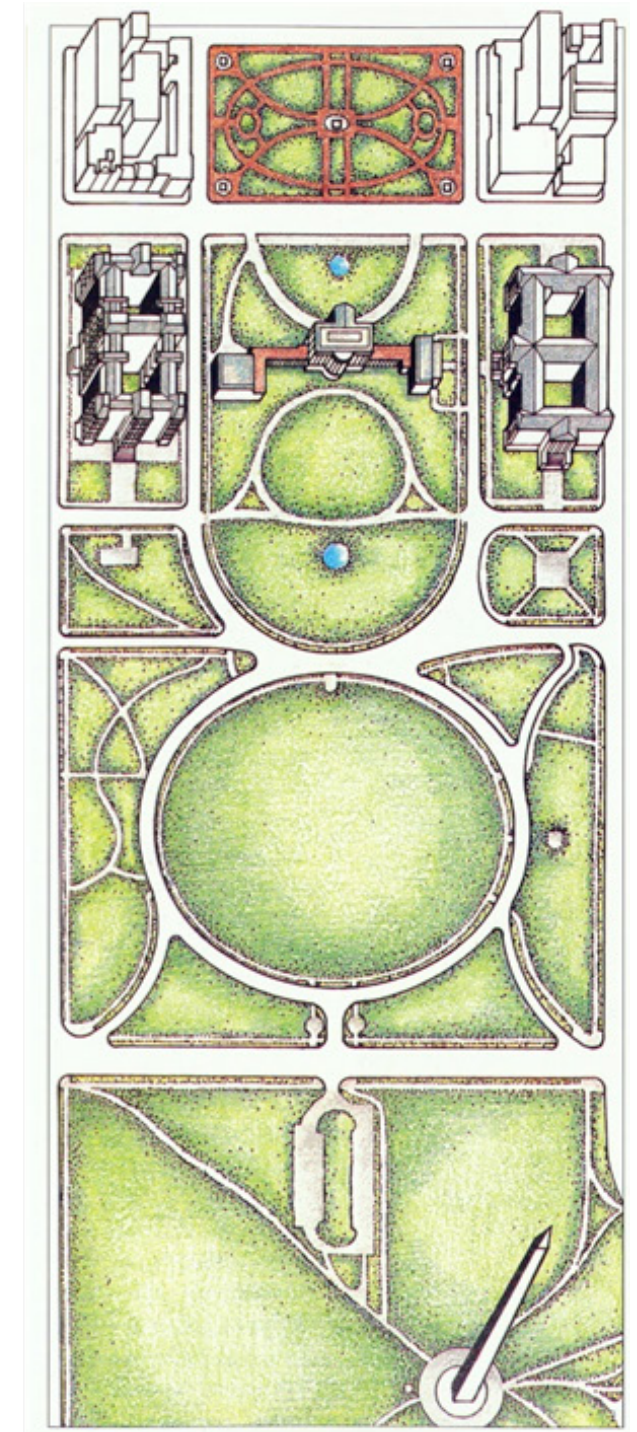
1800



1860



1900



1990

From William Seale, *The White House Garden*, 1996



White House Complex Fence Phase 1  
July 7, 2016

Historical Development, 1800-1990



Library of Congress



White House Complex Fence Phase 1  
July 7, 2016

From the Washington Monument  
1902

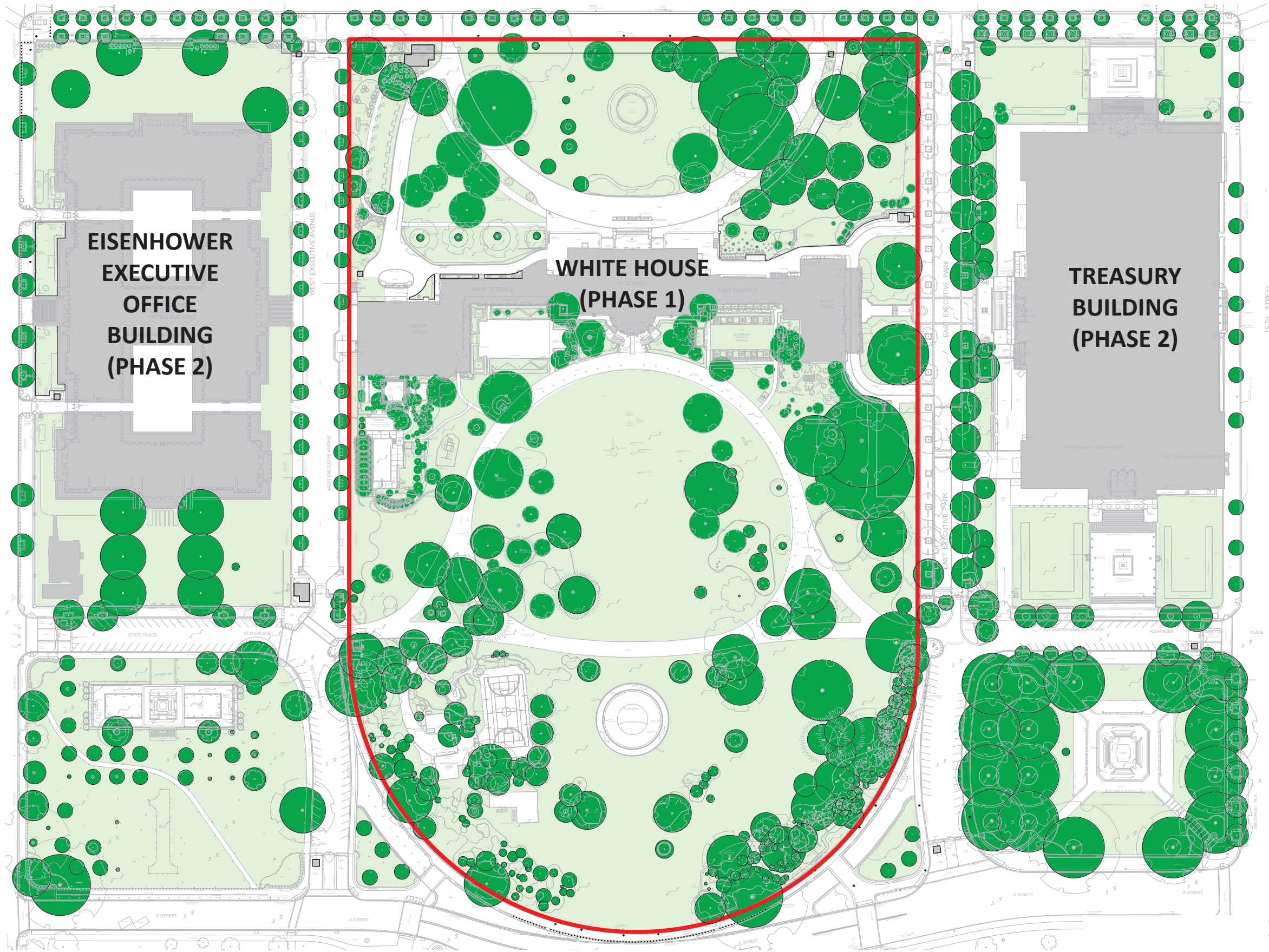


Heritage Landscapes



White House Complex Fence Phase 1  
July 7, 2016

From the Washington Monument  
2015



White House Complex Fence Phase 1  
 July 7, 2016

# Project Area



Belgian Parliament (Palais de la Nation) | Brussels  
*(Est. 24" base, 11' fence)*

Nassau Hall | Princeton, NJ  
*(36" base, 10' fence, 1" square iron pickets, 4" clear space)*



White House Complex Fence Phase 1  
July 7, 2016

## Fence Examples



Virginia State Capital | Richmond, VA  
*(7' fence, 1 1/2" diam. pickets, 4 1/2" clear space)*



Grove Street Cemetery | New Haven, CT  
*(7' fence, 1 1/2" square iron pickets, 4 1/2" clear space)*



White House Complex Fence Phase 1

July 7, 2016

# Fence Examples



**Drumthwacket | Princeton, NJ**  
*(7' high overall, 3/4" square iron pickets on diagonal, 5 1/2" clear space)*



**Mississippi Governor's Mansion | Jackson, MS**  
*(3 1/2' base, 9' high overall)*



White House Complex Fence Phase 1  
July 7, 2016

# Fence Examples



Photo ca. 1900  
Library of Congress  
East Executive Avenue - iron fence & gates

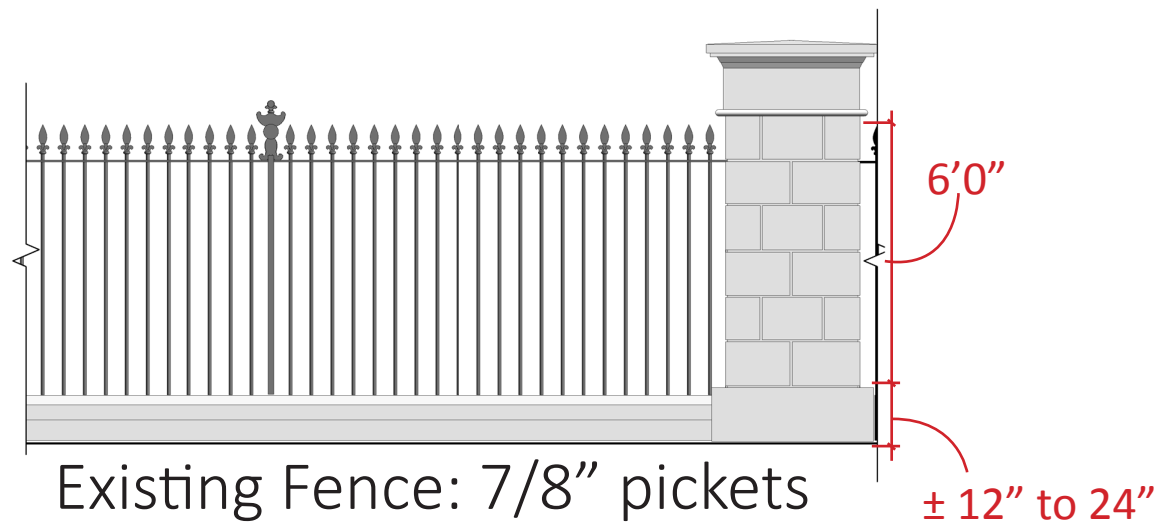


Photo ca. 1915  
Fence attains current form between 1900 & 1920

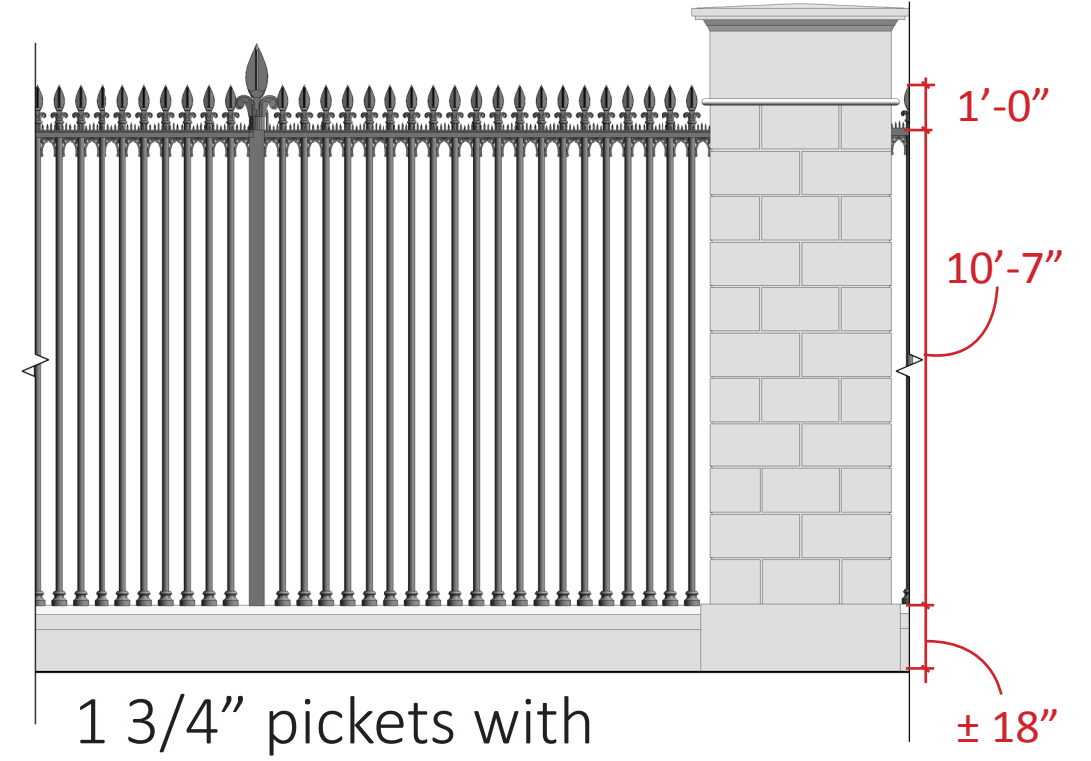


White House Complex Fence Phase 1  
July 7, 2016

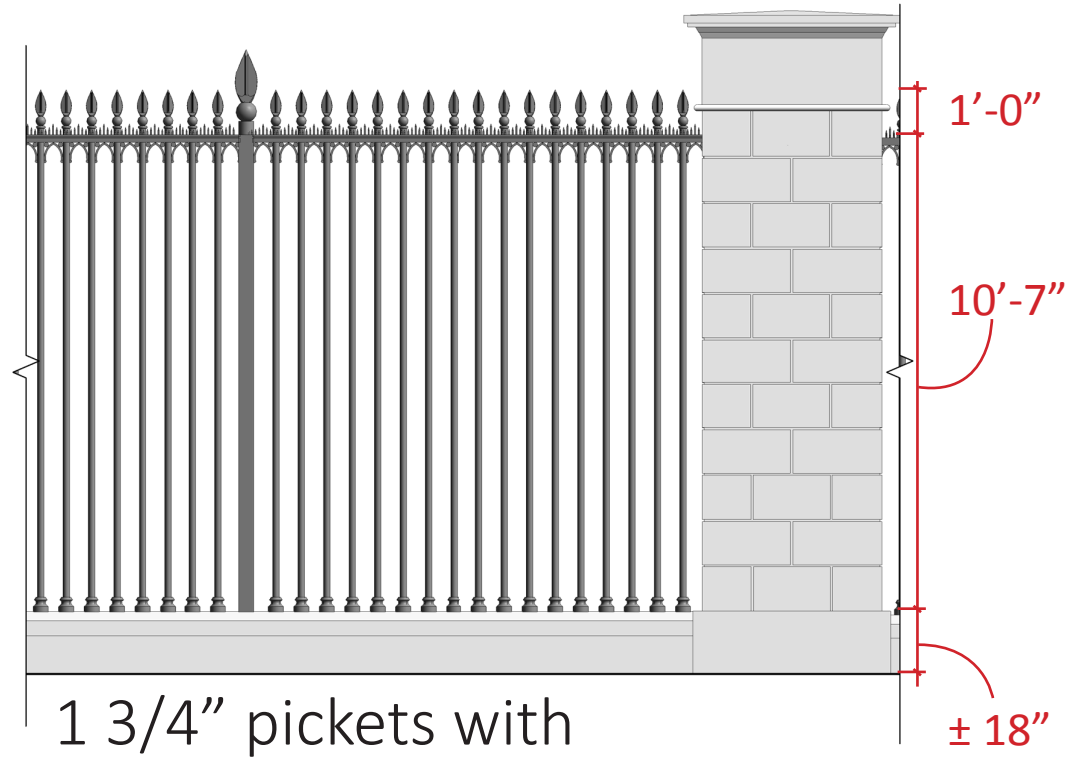
## Historic White House Fence



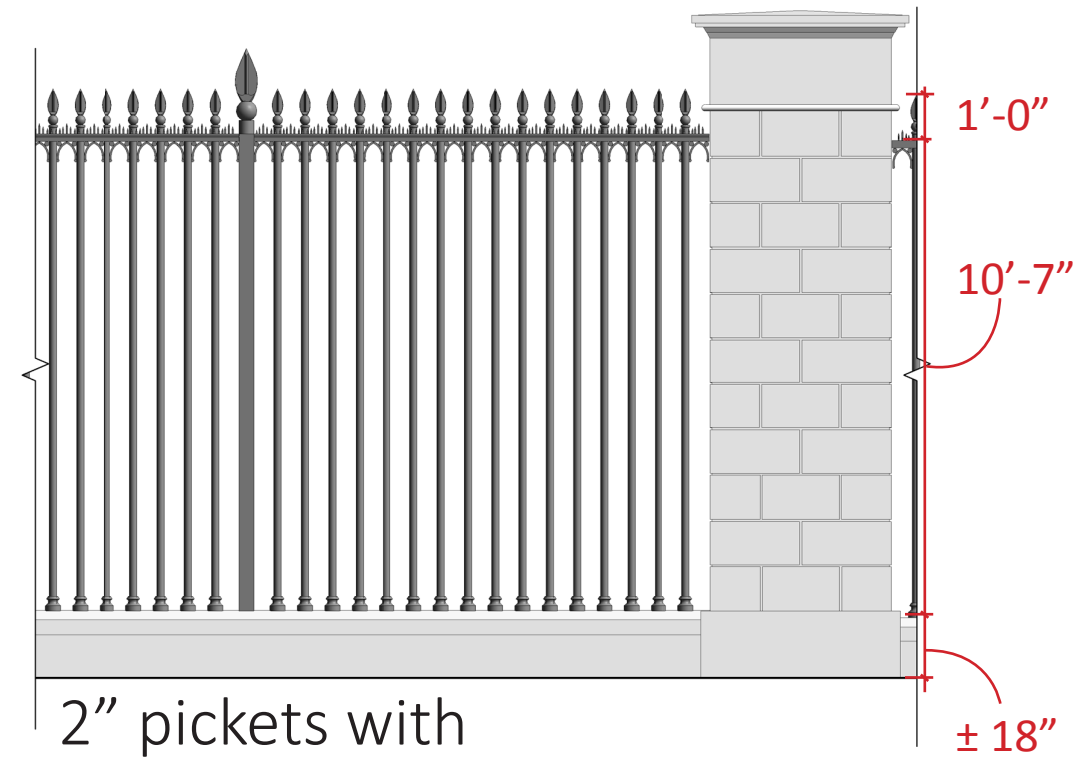
Existing Fence: 7/8" pickets with 4 5/8" clear space



1 3/4" pickets with 4" clear space

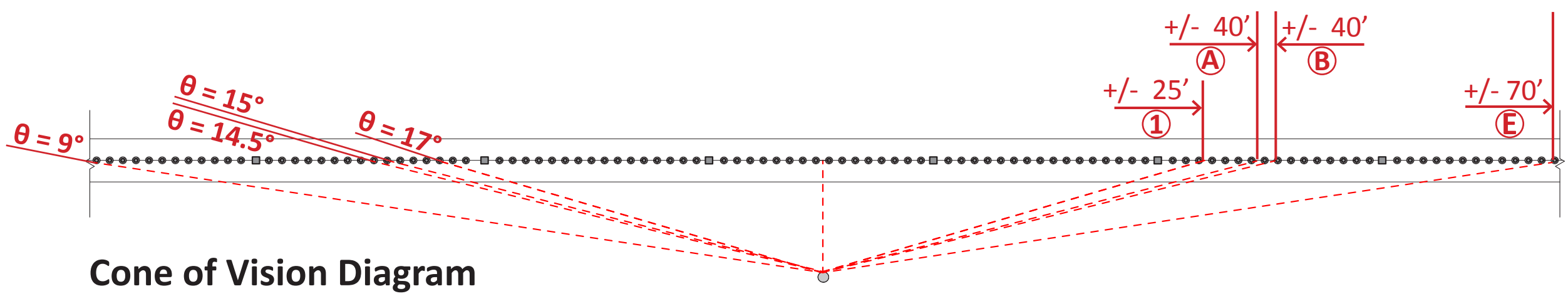


1 3/4" pickets with 5" clear space

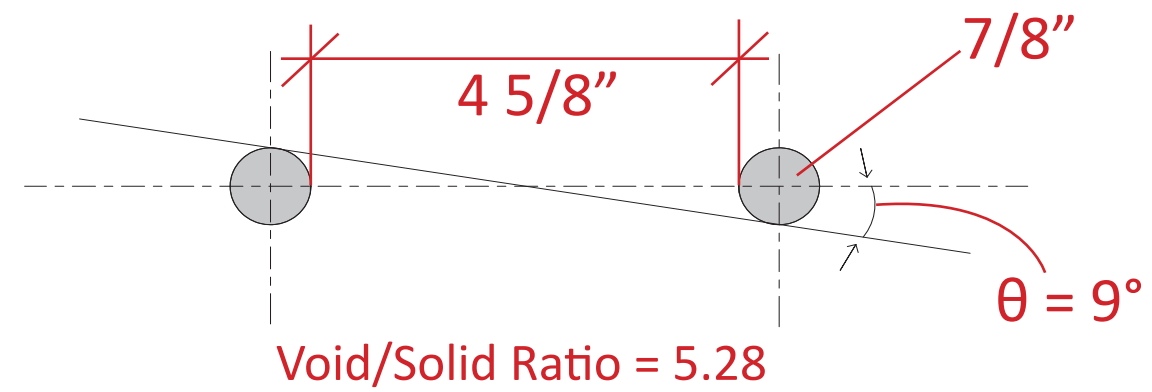


2" pickets with 5 1/2" clear space

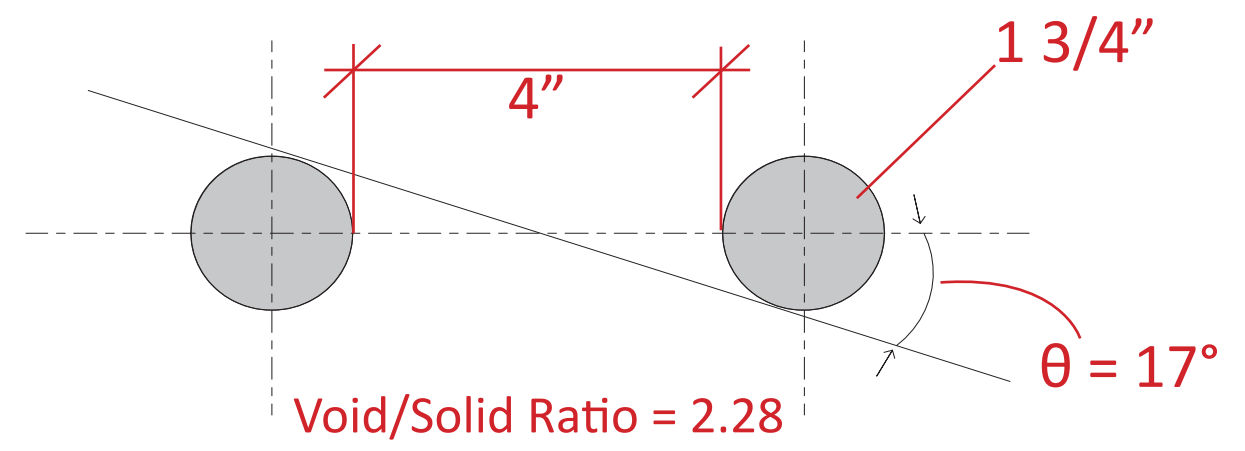




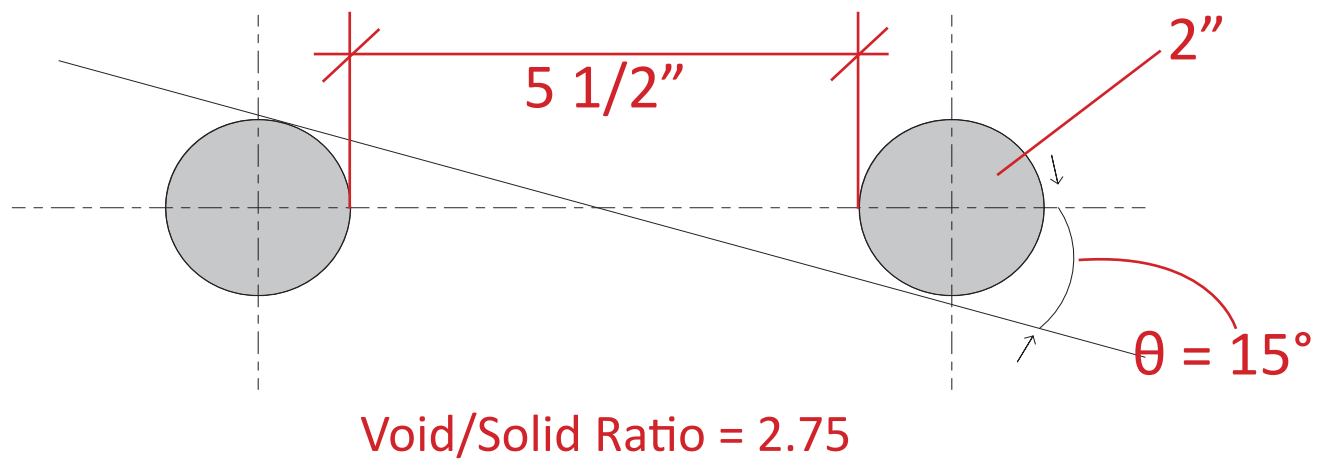
**Cone of Vision Diagram**



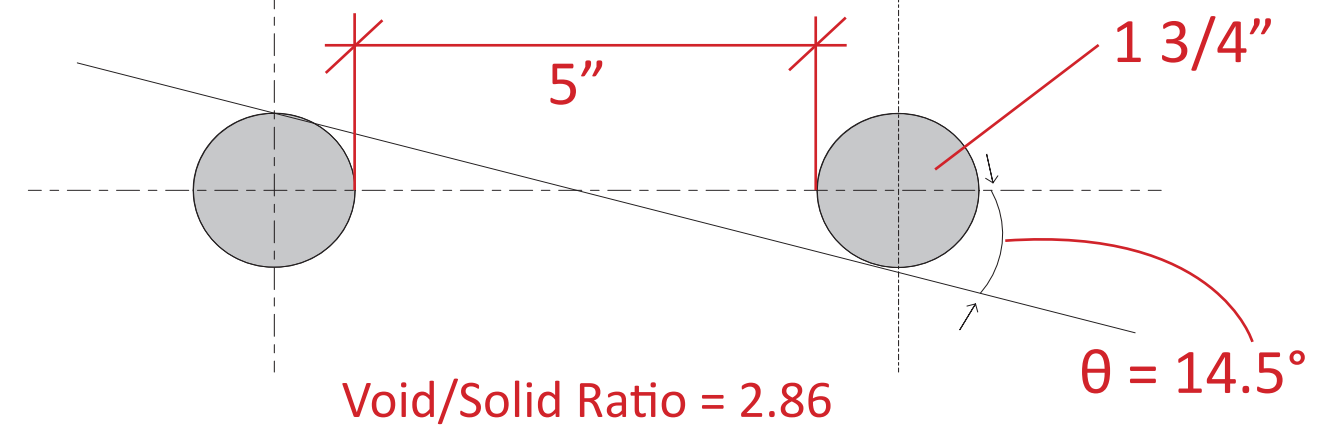
Ⓔ Existing Fence: 7/8" pickets with 4 5/8" clear space



Ⓐ 1 3/4" diam. pickets with 4" clear space

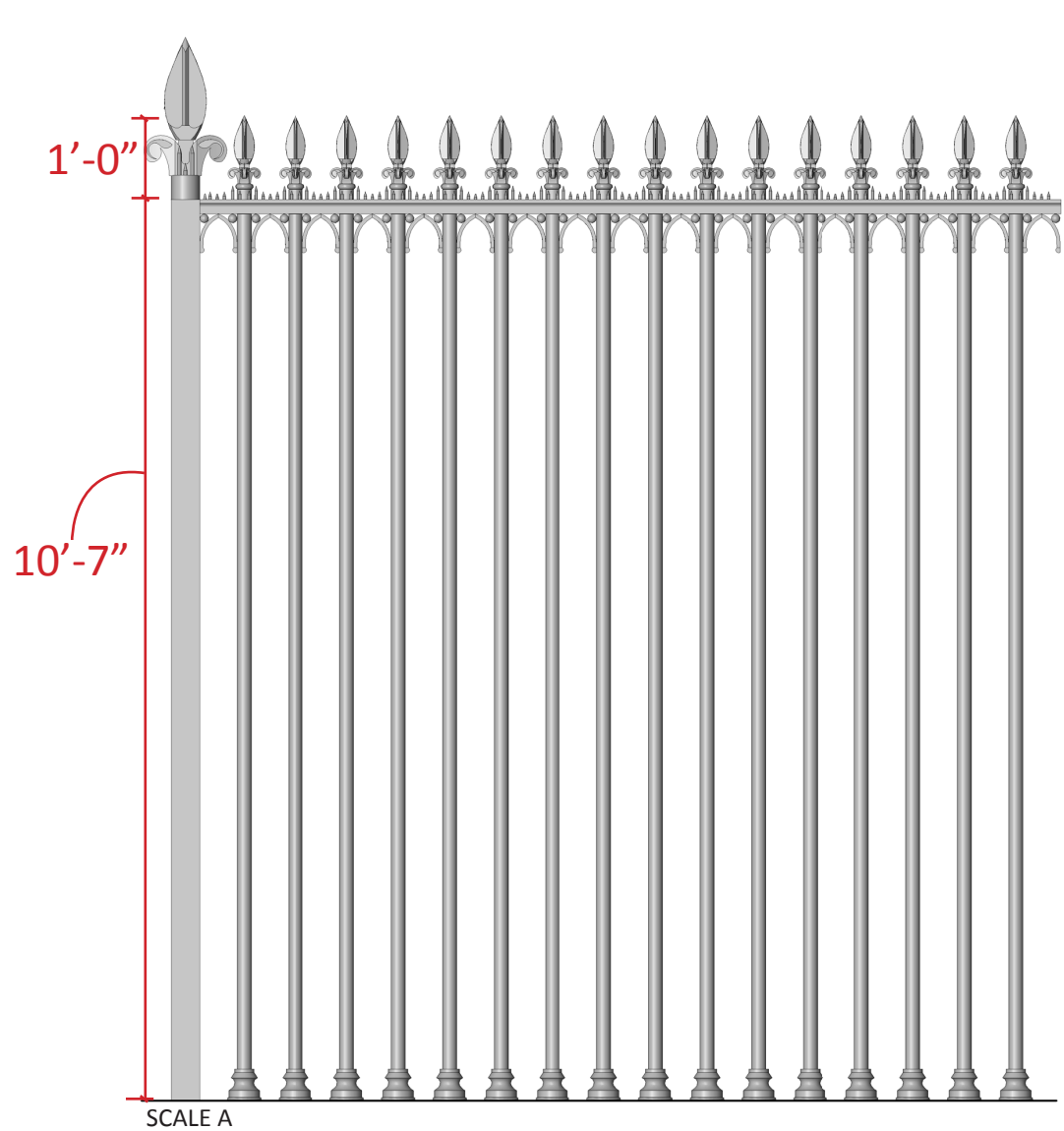


Ⓑ 2" diam. pickets with 5 1/2" clear space



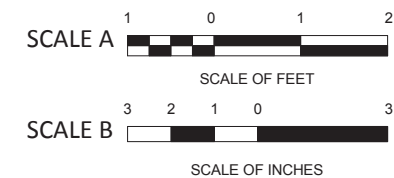
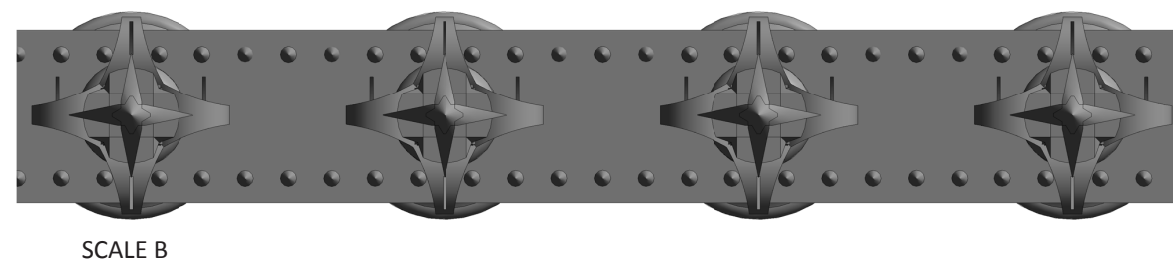
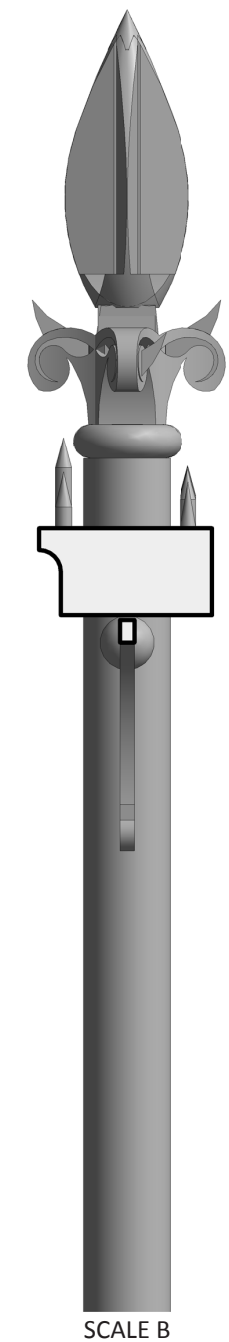
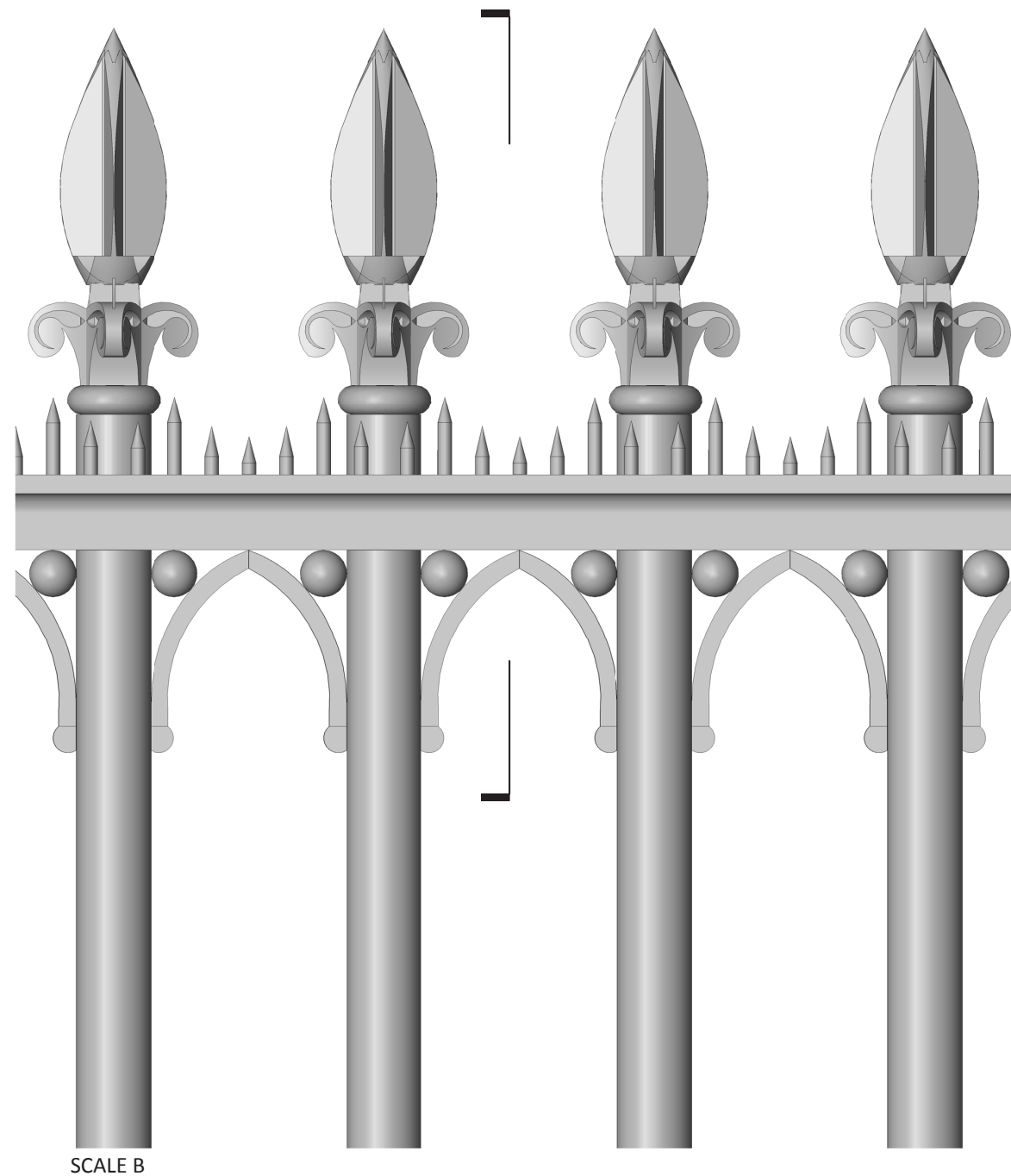
Ⓒ 1 3/4" diam. pickets with 5" clear space

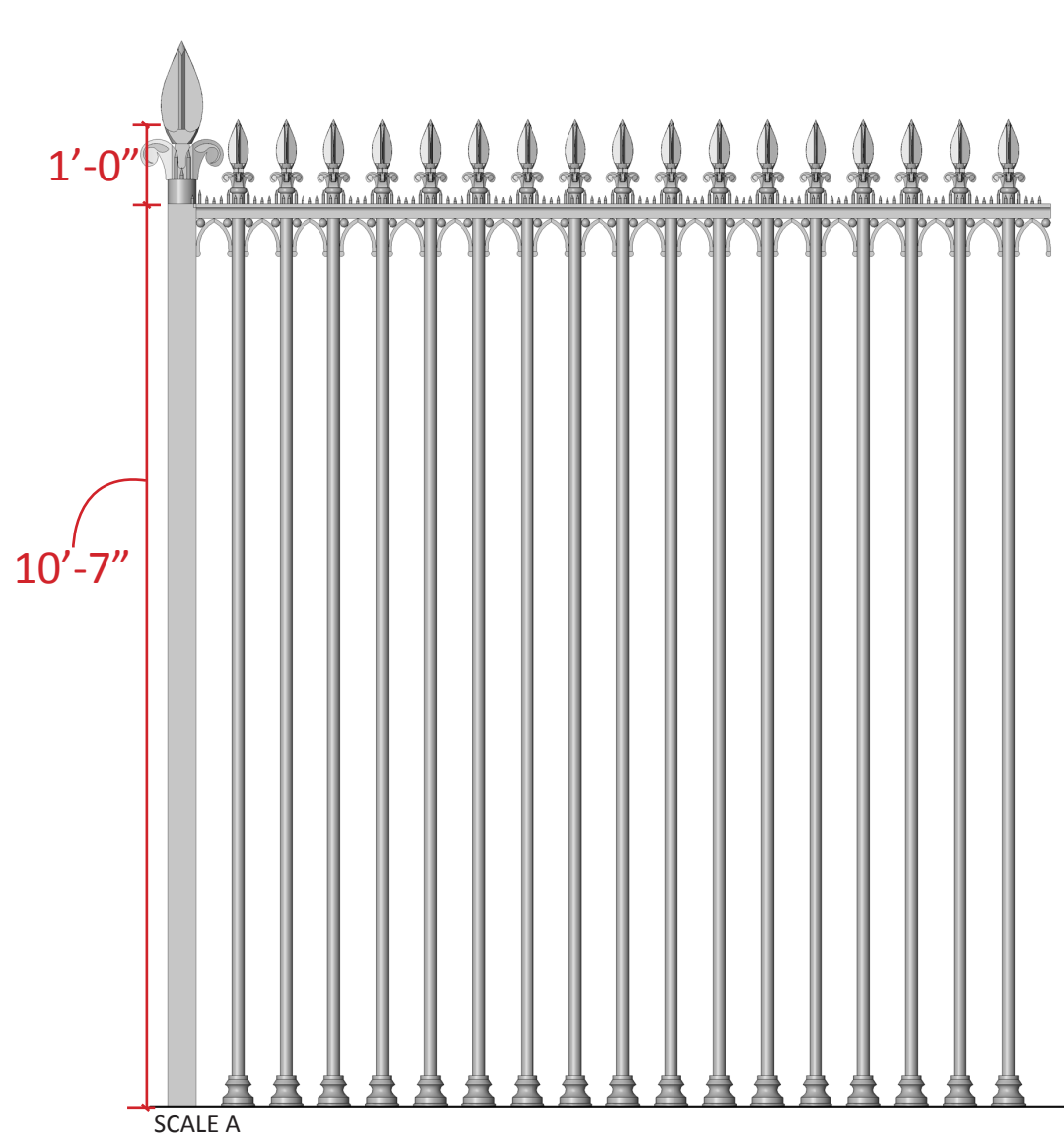




**2" dia. Pickets with 5-1/2" Clear Space**

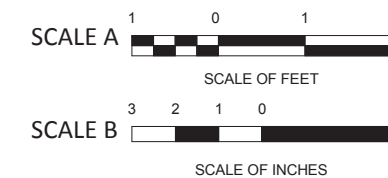
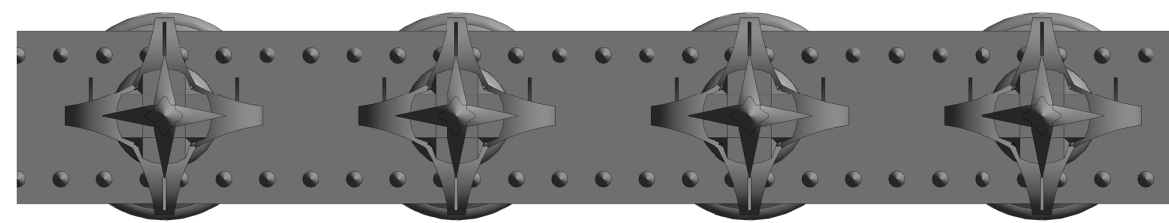
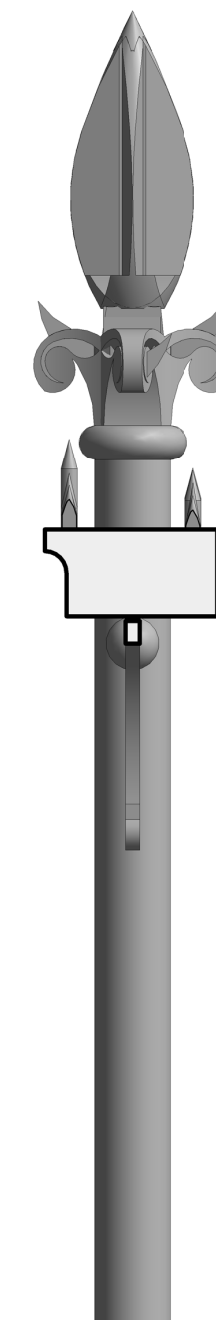
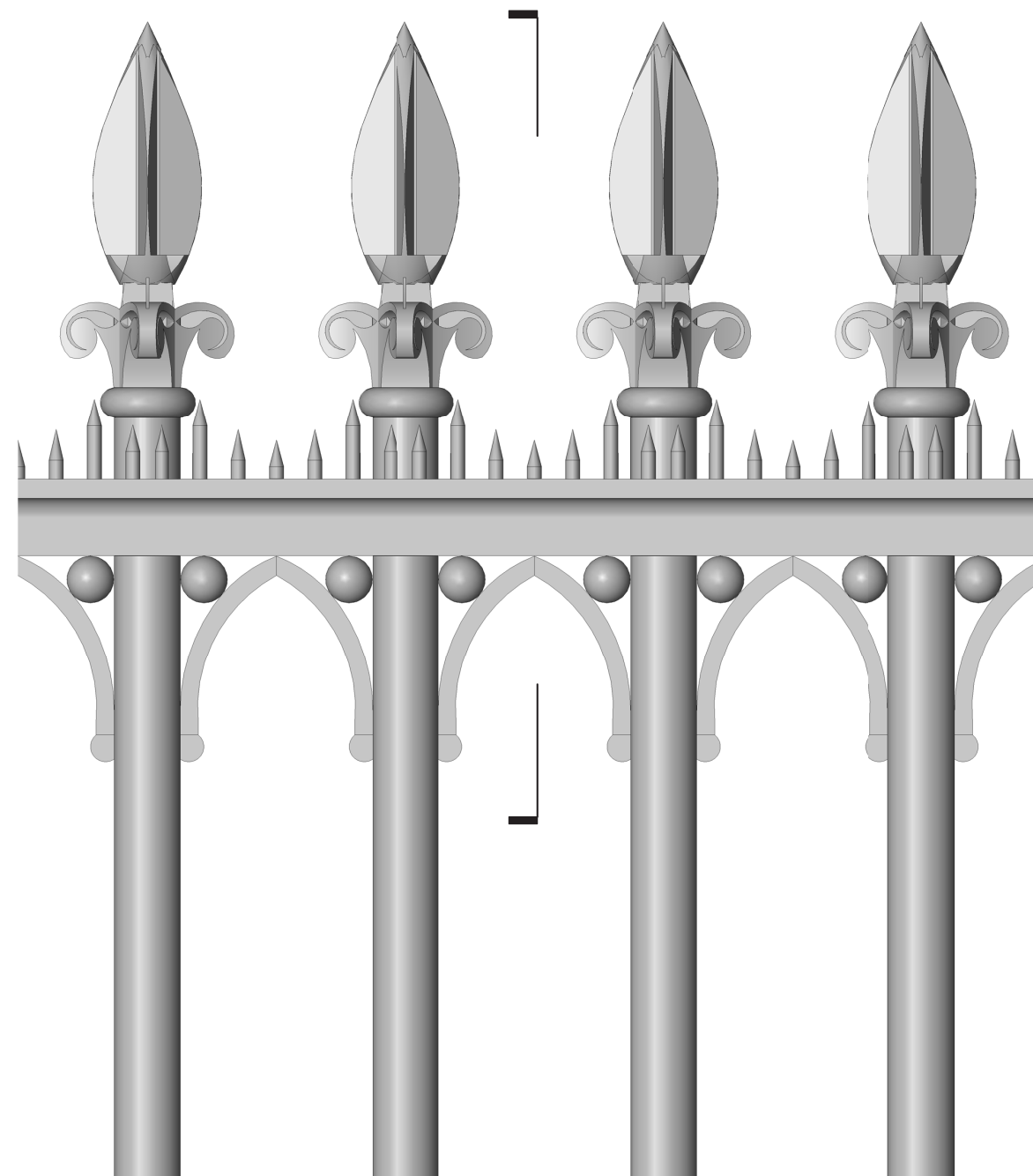
- PENCIL SPIKE ELEVATION RESPONDS TO CURVE OF ORNAMENTAL ARCHES BELOW
- PICKET SPEARS ARE CENTERED WITHIN THE RAIL
- FRONT PENCIL SPIKES ARE 3/8" FROM RAIL EDGE
- BACK ROW OF SMALLER PENCIL SPIKES ARE 3/8" FROM RAIL EDGE
- FRONT AND REAR SHARD SPIKES PROJECT OUTWARD, PROTECTING SPEAR FINIAL

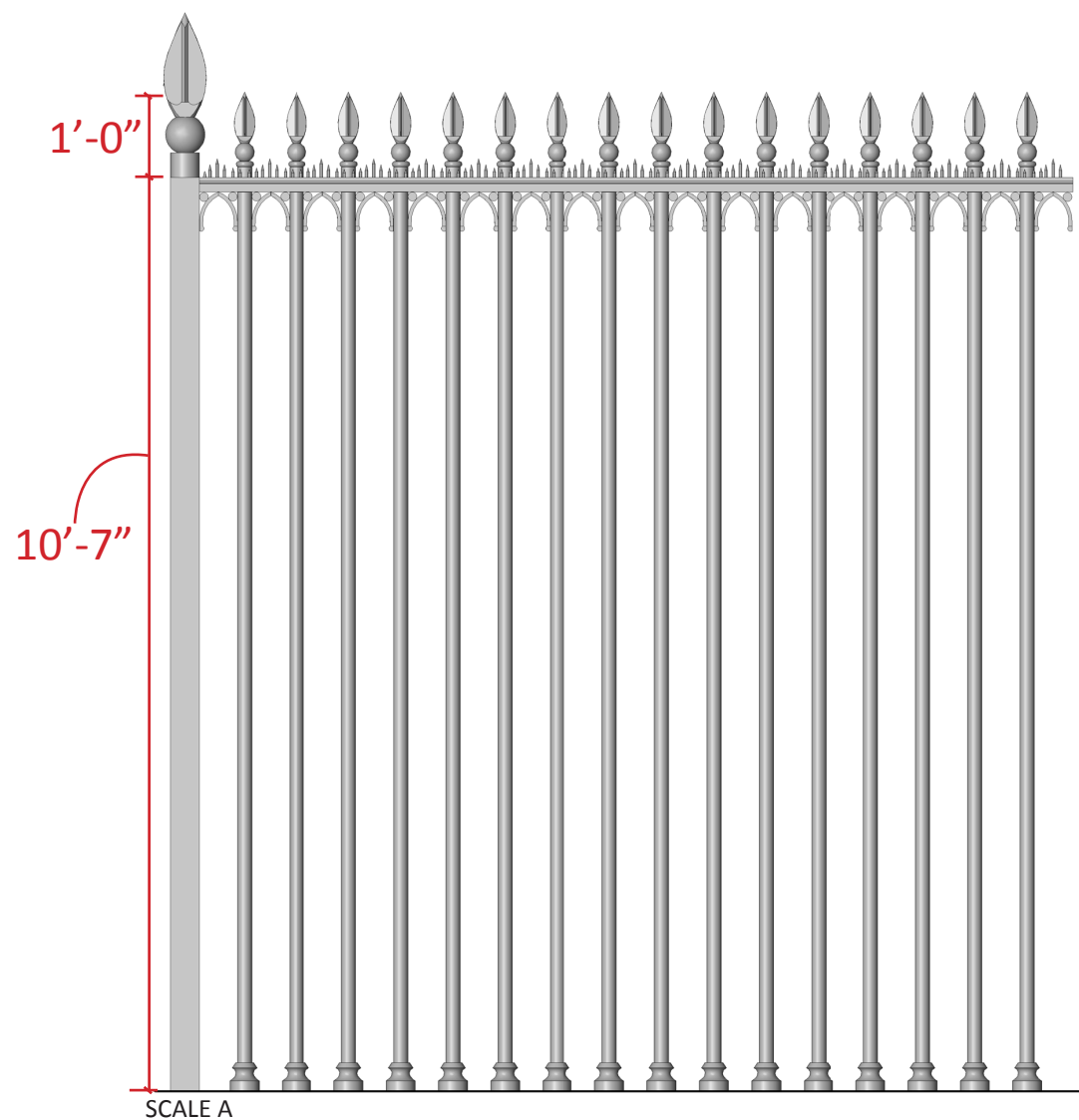




**1 3/4" dia. Pickets with 5" Clear Space**

- PENCIL SPIKE ELEVATION RESPONDS TO CURVE OF ORNAMENTAL ARCHES BELOW
- PICKET SPEARS ARE CENTERED WITHIN THE RAIL
- FRONT PENCIL SPIKES ARE 3/8" FROM RAIL EDGE
- BACK ROW OF SMALLER PENCIL SPIKES ARE 3/8" FROM RAIL EDGE
- FRONT AND REAR SHARD SPIKES PROJECT OUTWARD, PROTECTING SPEAR FINIAL

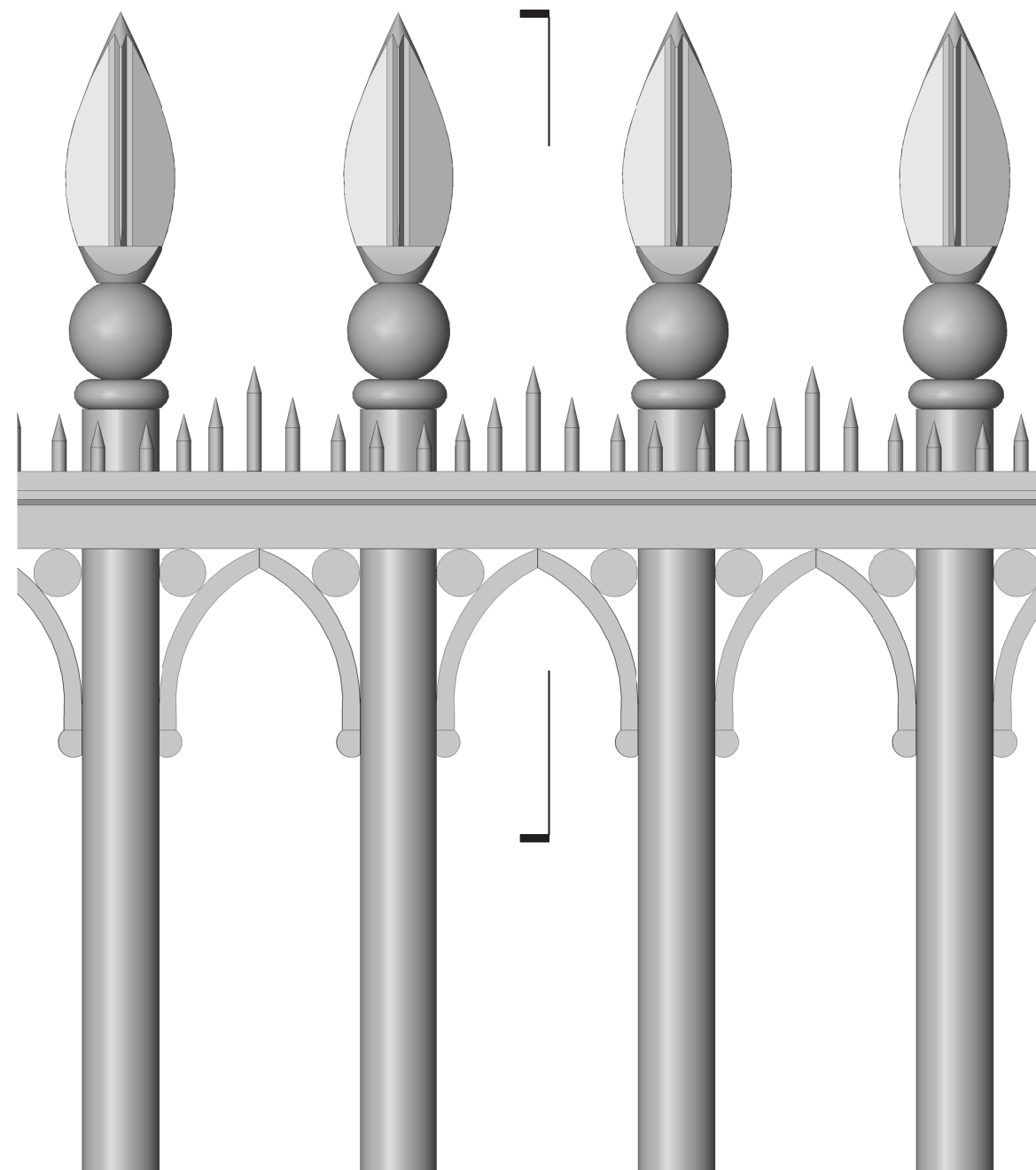




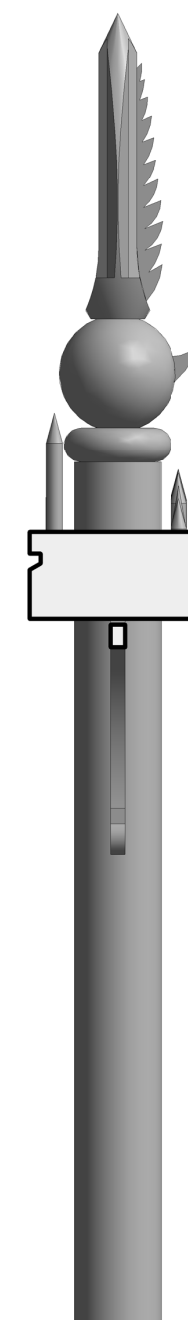
SCALE A

**2" dia. Pickets with 5-1/2" Clear Space**

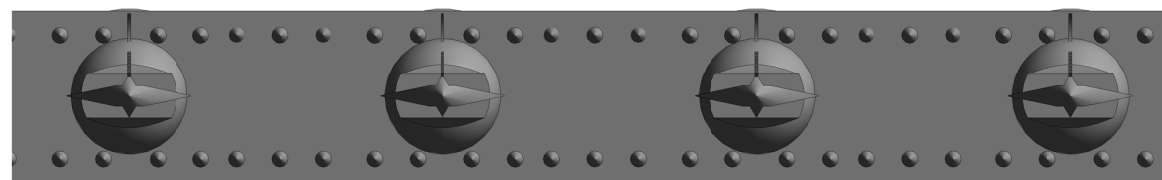
- PENCIL SPIKE ELEVATION RESPONDS TO CURVE OF ORNAMENTAL ARCHES BELOW
- PICKET SPEARS ARE CENTERED WITHIN THE RAIL
- FRONT PENCIL SPIKES ARE 3/8" FROM RAIL EDGE
- BACK ROW OF SMALLER PENCIL SPIKES ARE 3/8" FROM RAIL EDGE
- REAR SHARD SPIKES PROJECT OUTWARD, PROTECTING SPEAR FINIAL



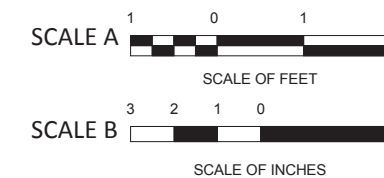
SCALE B

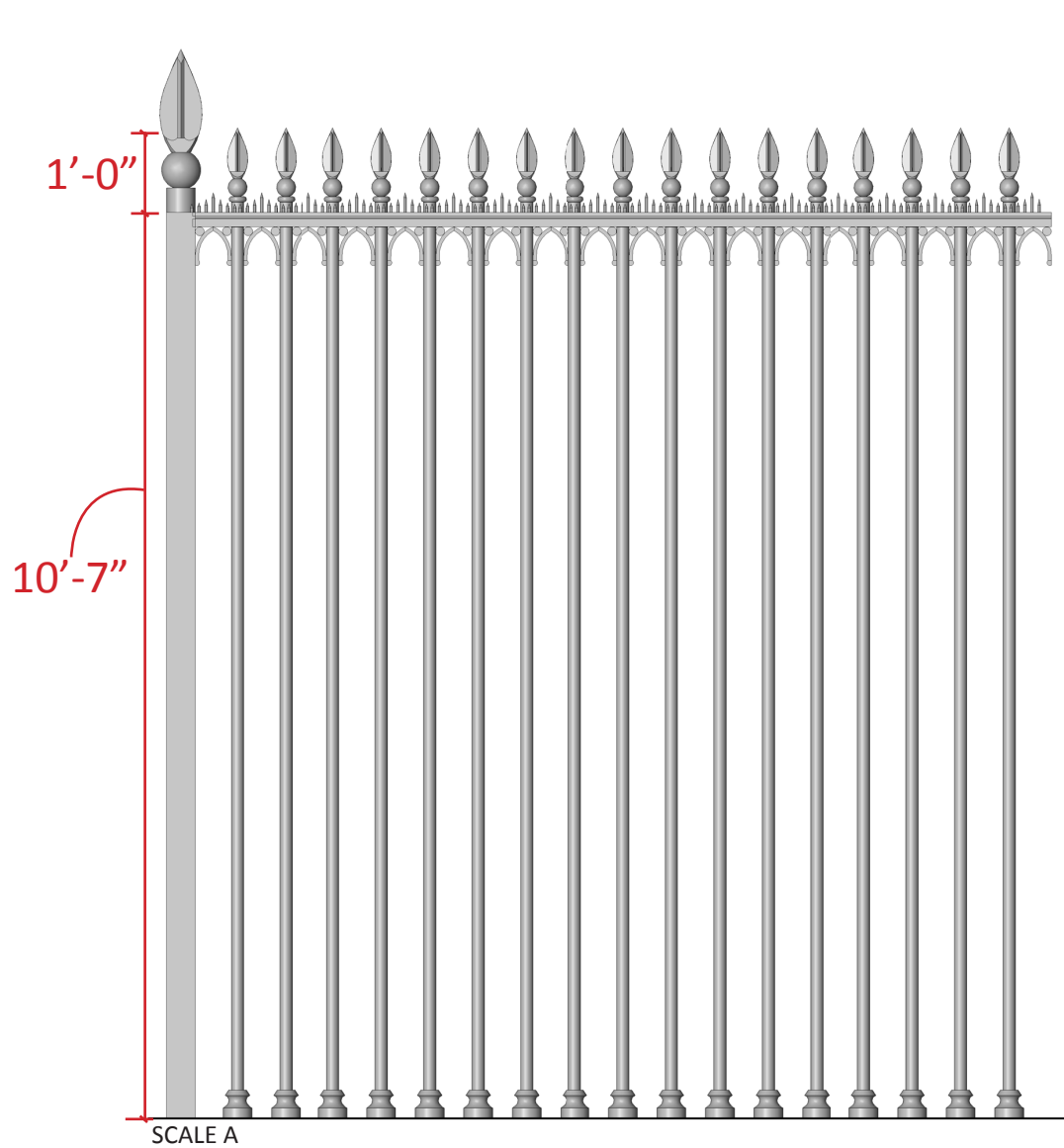


SCALE B



SCALE B

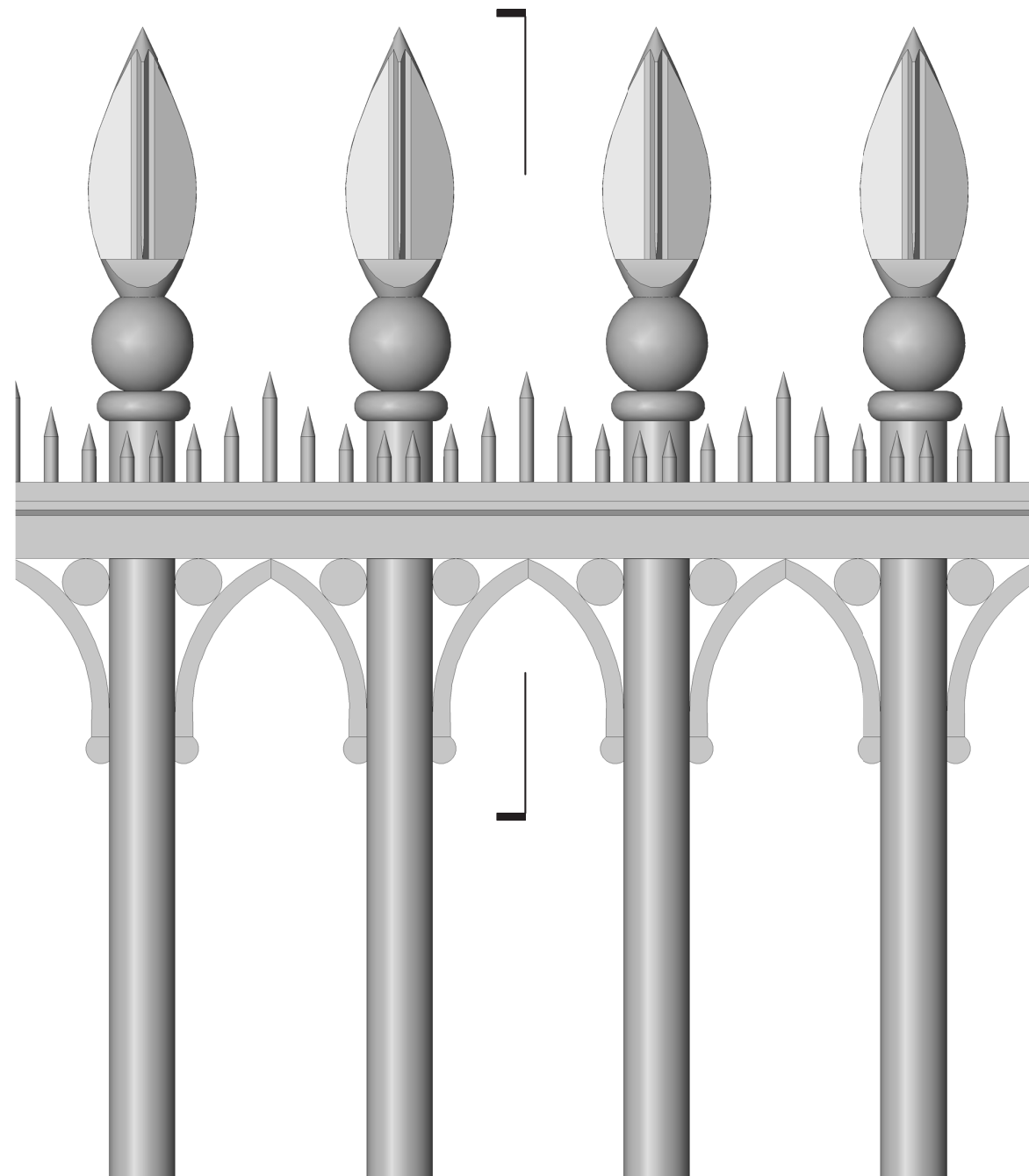




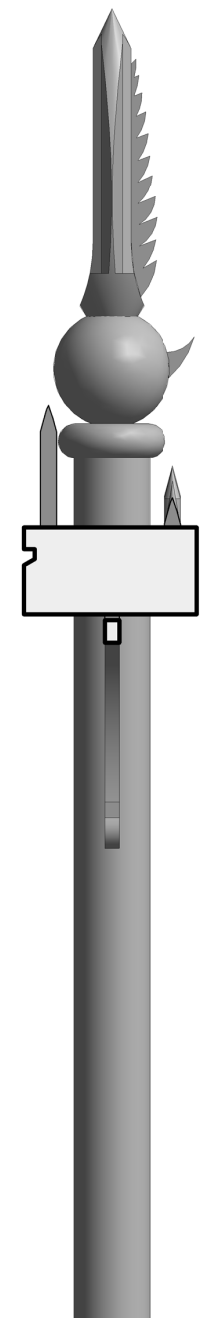
SCALE A

**1 3/4" dia. Pickets with 5" Clear Space**

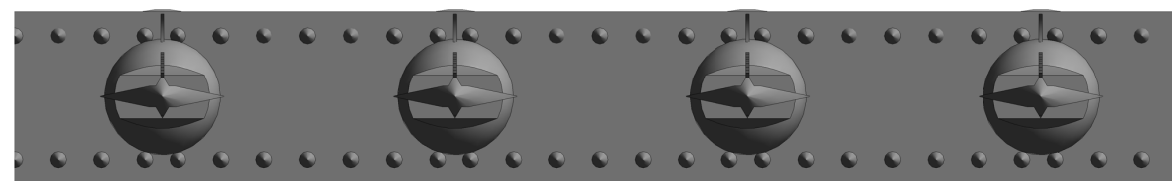
- PENCIL SPIKE ELEVATION RESPONDS TO CURVE OF ORNAMENTAL ARCHES BELOW
- PICKET SPEARS ARE CENTERED WITHIN THE RAIL
- FRONT PENCIL SPIKES ARE 3/8" FROM RAIL EDGE
- BACK ROW OF SMALLER PENCIL SPIKES ARE 3/8" FROM RAIL EDGE
- REAR SHARD SPIKES PROJECT OUTWARD, PROTECTING SPEAR FINIAL



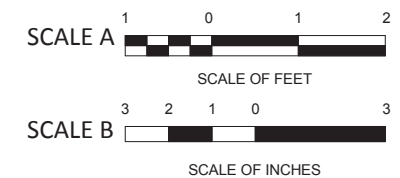
SCALE B

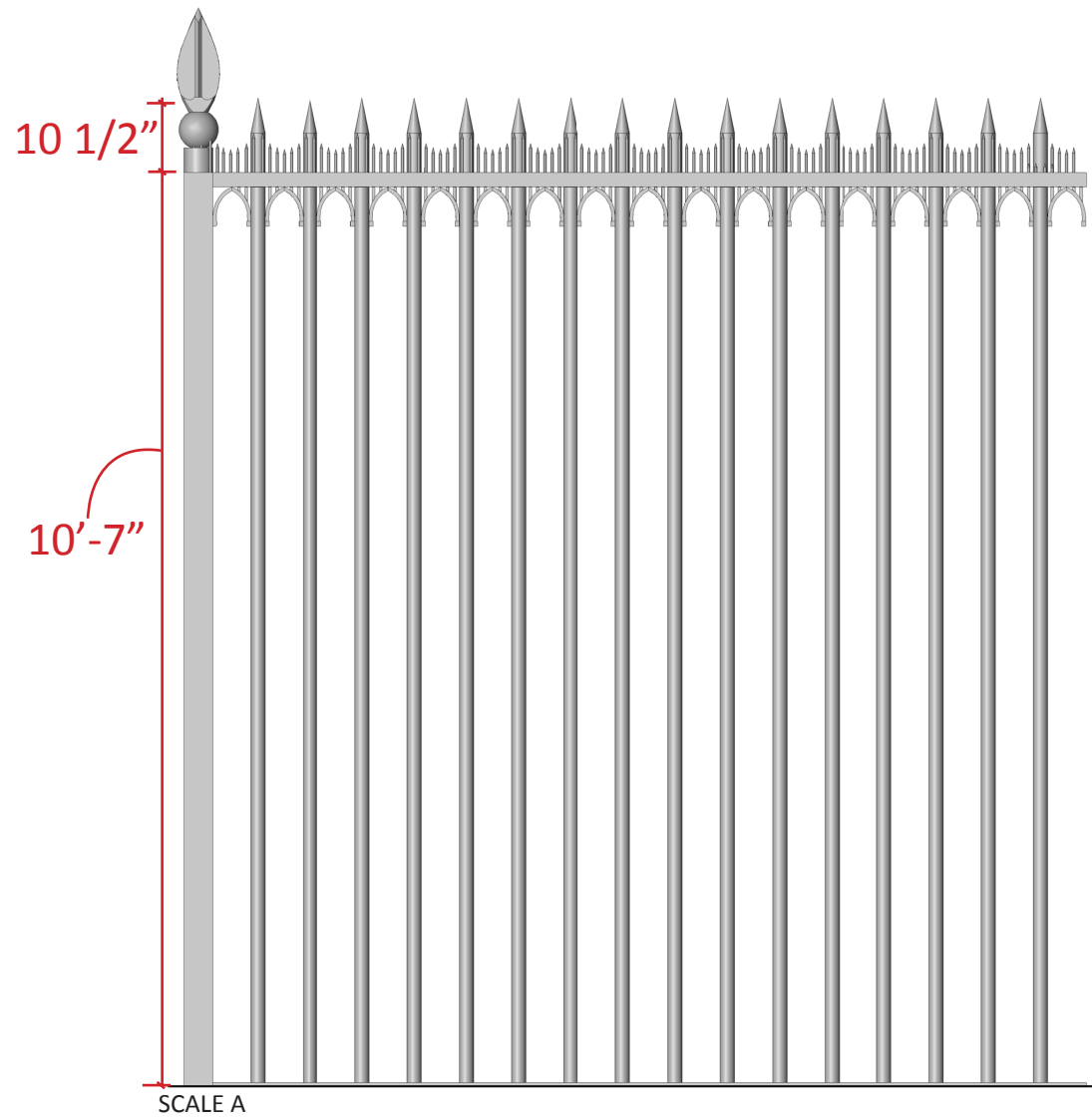


SCALE B



SCALE B

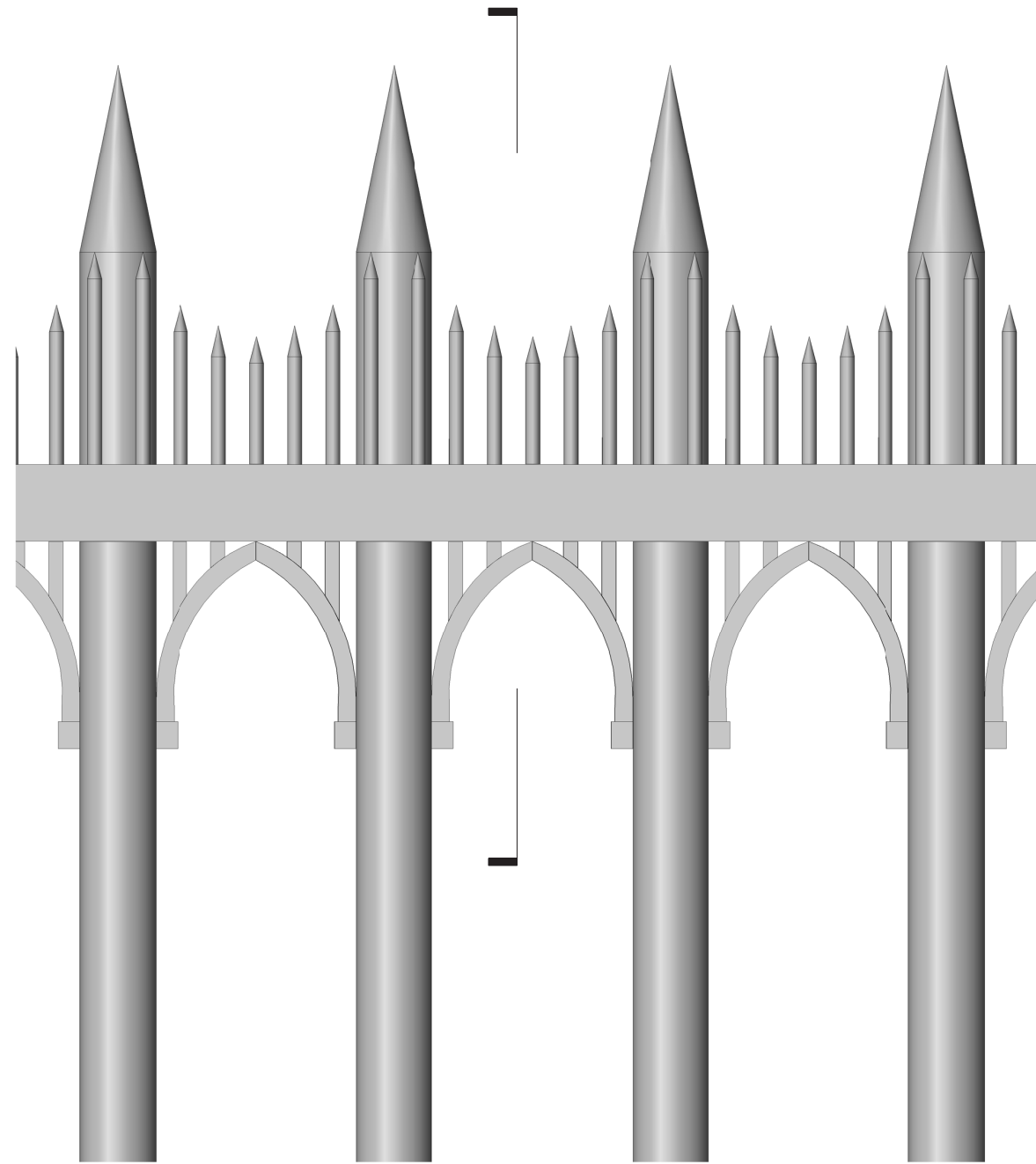




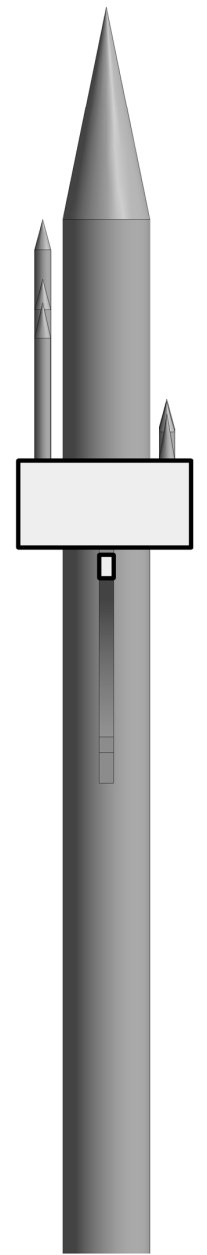
SCALE A

**2" dia. Pickets with 5-1/2" Clear Space**

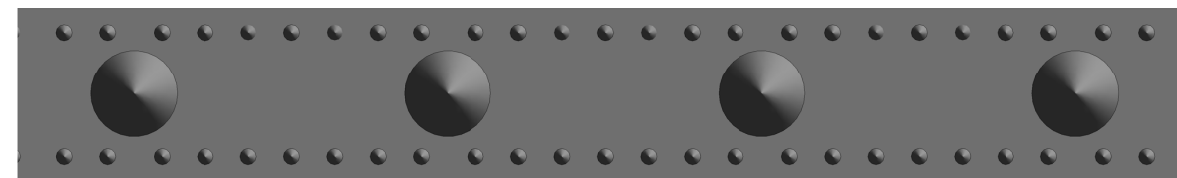
- PENCIL SPIKE ELEVATION RESPONDS TO CURVE OF ORNAMENTAL ARCHES BELOW
- PICKET SPEARS ARE CENTERED WITHIN THE RAIL
- FRONT PENCIL SPIKES ARE 3/8" FROM RAIL EDGE
- BACK ROW OF SMALLER PENCIL SPIKES ARE 3/8" FROM RAIL EDGE



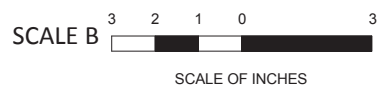
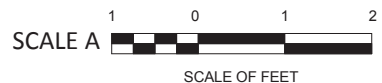
SCALE B

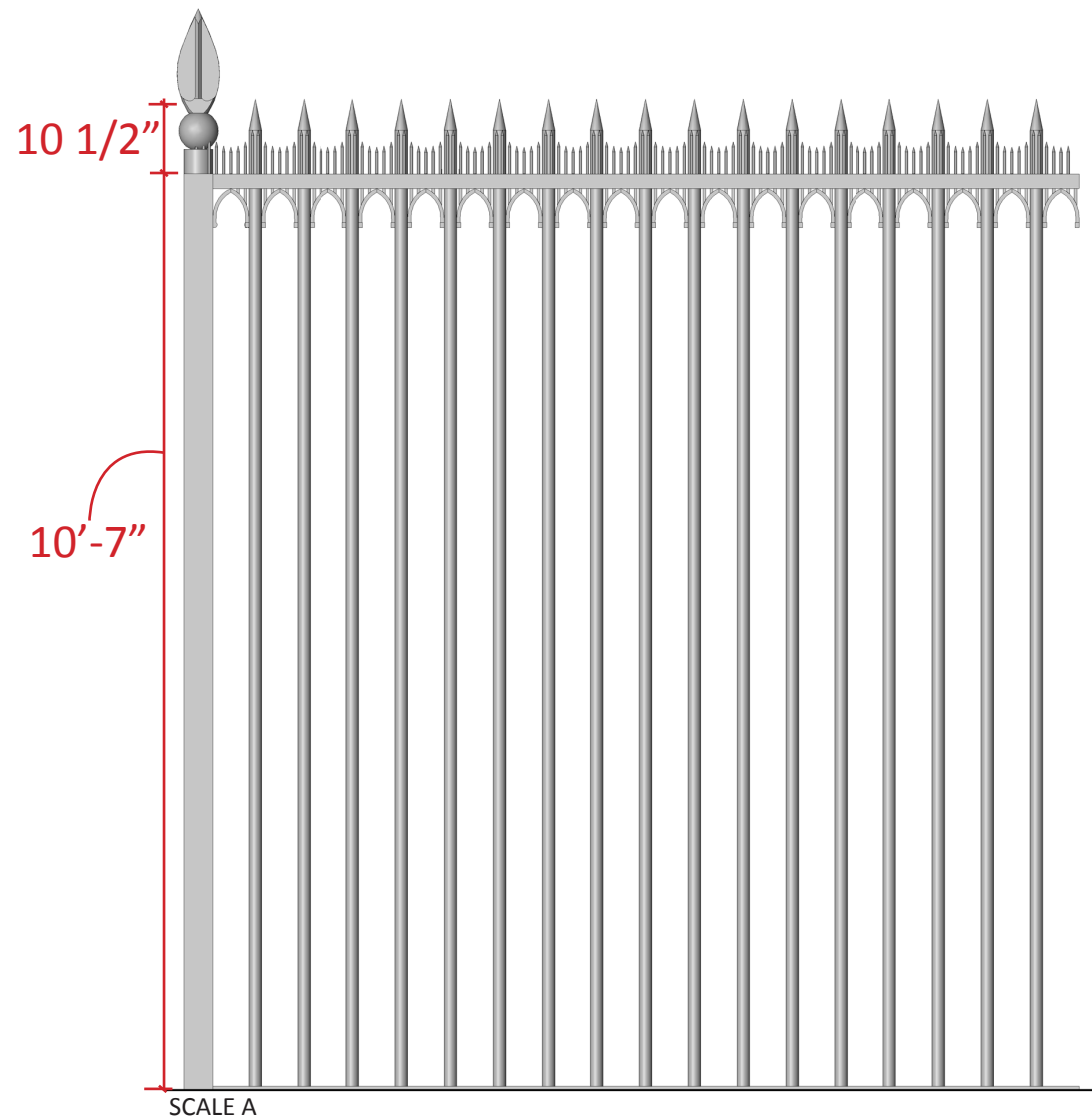


SCALE B



SCALE B

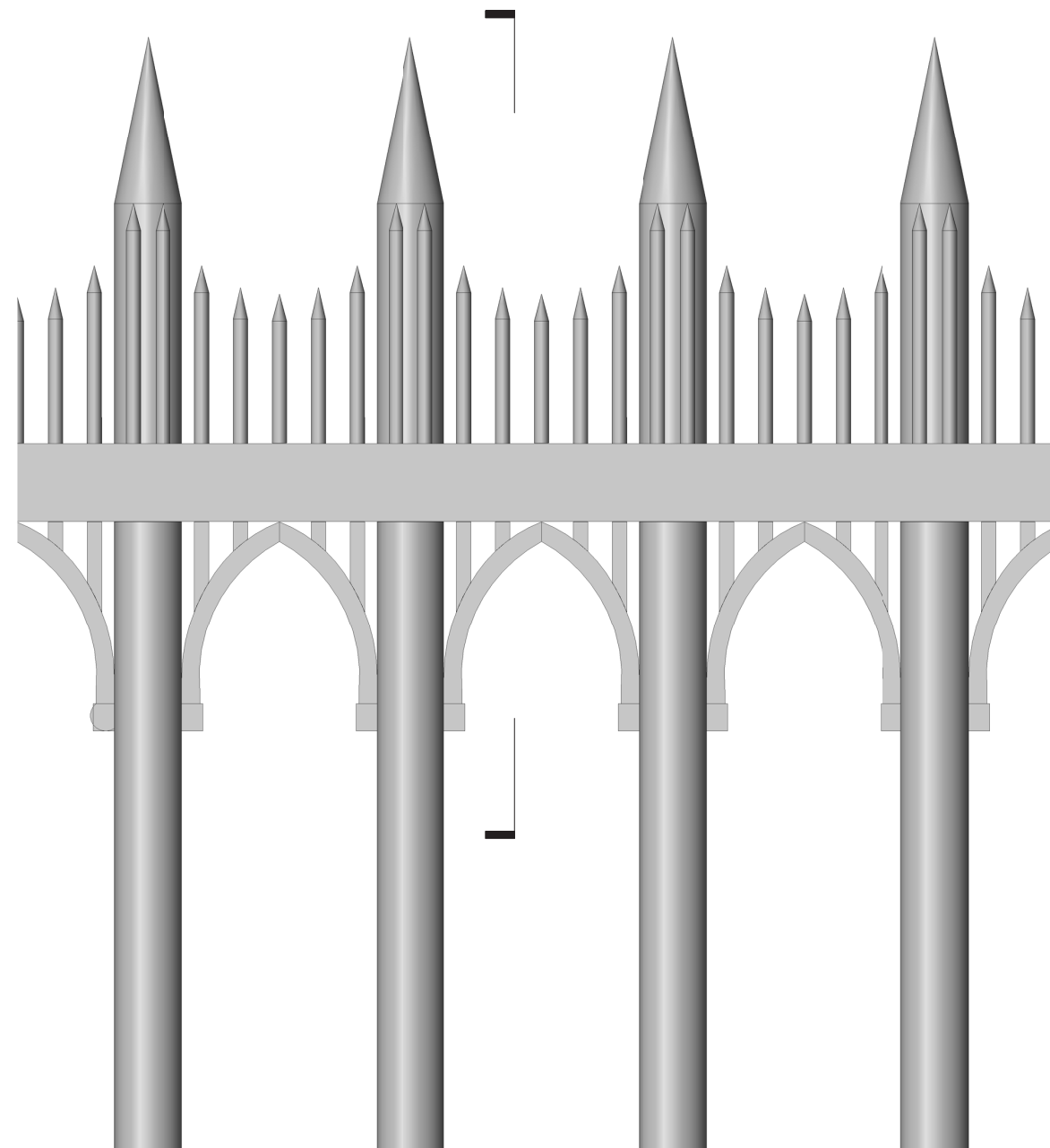




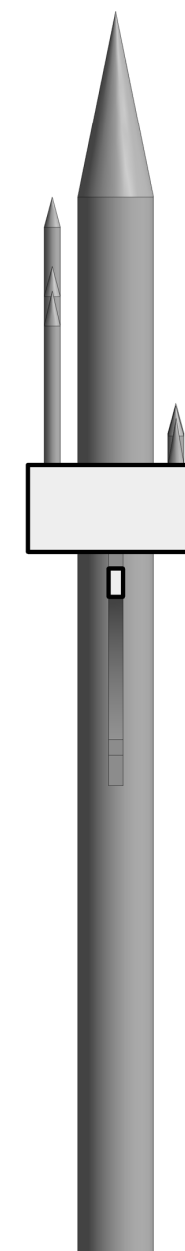
SCALE A

**1 3/4" dia. Pickets with 5" Clear Space**

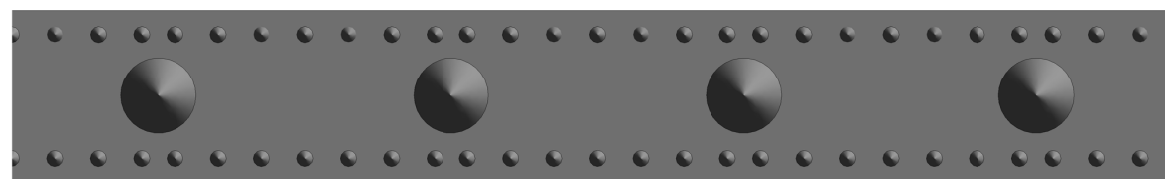
- PENCIL SPIKE ELEVATION RESPONDS TO CURVE OF ORNAMENTAL ARCHES BELOW
- PICKET SPEARS ARE CENTERED WITHIN THE RAIL
- FRONT PENCIL SPIKES ARE 3/8" FROM RAIL EDGE
- BACK ROW OF SMALLER PENCIL SPIKES ARE 3/8" FROM RAIL EDGE



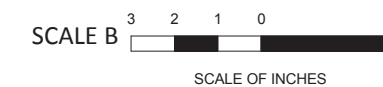
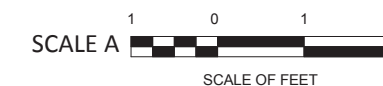
SCALE B

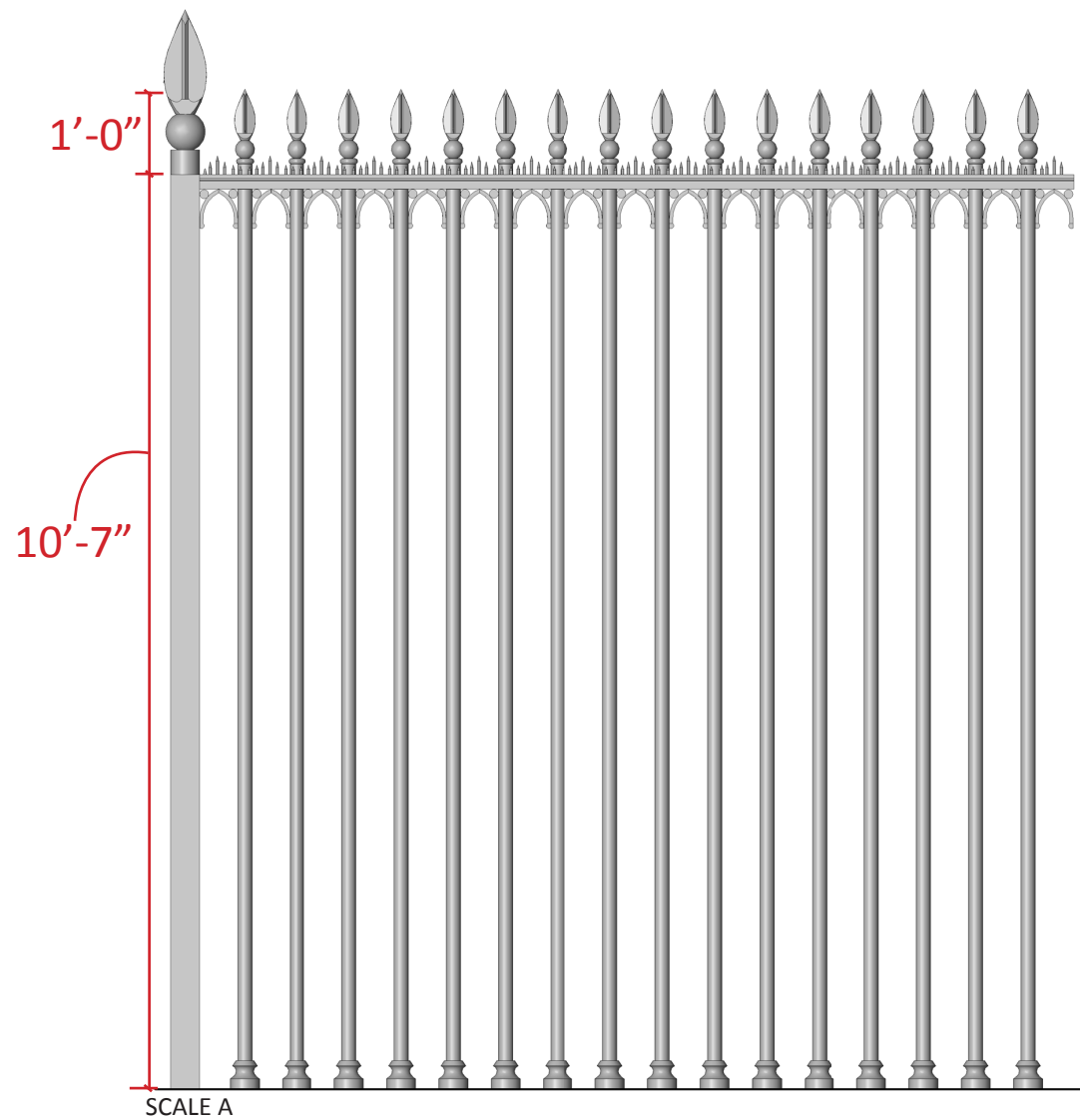


SCALE B



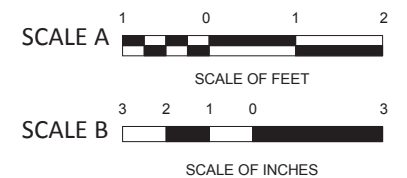
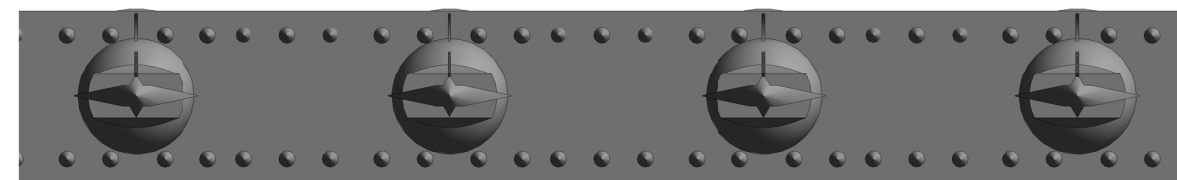
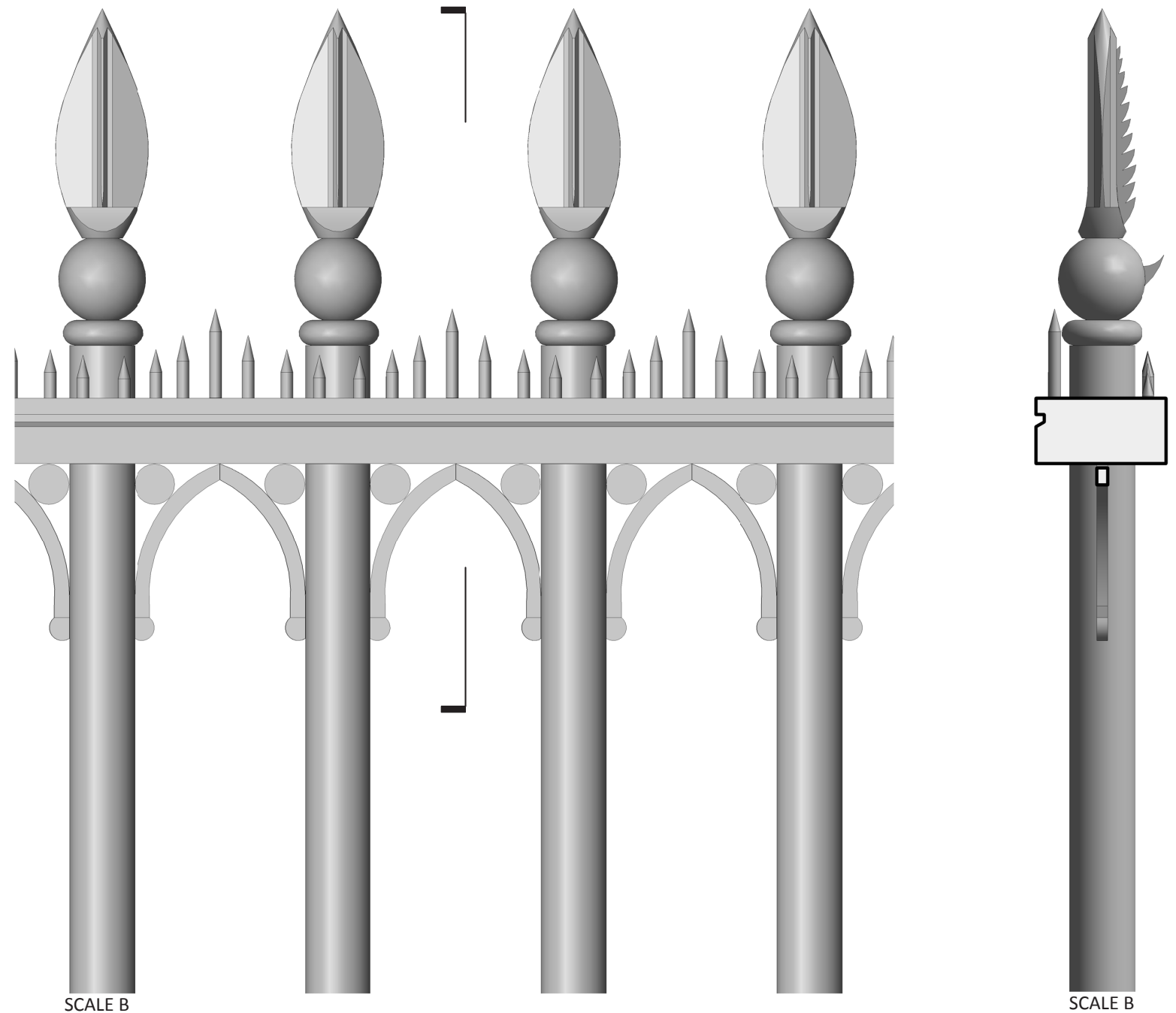
SCALE B





**2" dia. Pickets with 5-1/2" Clear Space**

- BEST BALANCE OF PROPORTION AND PERFORMANCE
- WIDEST OPEN SPACE BETWEEN PICKETS
- COMPARABLE METRICS TO OPTION WITH 1 3/4" PICKETS
- LEAST DENSITY OF PICKET FINIALS
- MOST EFFECTIVE PROTECTION





North side along Pennsylvania Avenue  
*Existing (7/8" pickets with 4 5/8" clear space)*



North side along Pennsylvania Avenue  
*Concept A (2" pickets with 5 1/2" clear space)*



White House Complex Fence Phase 1  
 July 7, 2016

# Fence Concept at Pennsylvania Avenue



*(7/8" pickets with 4 5/8" clear space)*



White House Complex Fence Phase 1  
July 7, 2016

Existing Fence from Lafayette Park



*Concept A (2" pickets with 5 1/2" clear space)*



White House Complex Fence Phase 1  
July 7, 2016

Fence Concept from Pennsylvania  
Avenue



*Concept A (2" pickets with 5 1/2" clear space)*



White House Complex Fence Phase 1  
July 7, 2016

Fence Concept from Lafayette Park



*(7/8" pickets with 4 5/8" clear space)*



White House Complex Fence Phase 1  
July 7, 2016

# Existing Fence at South Lawn From E Street

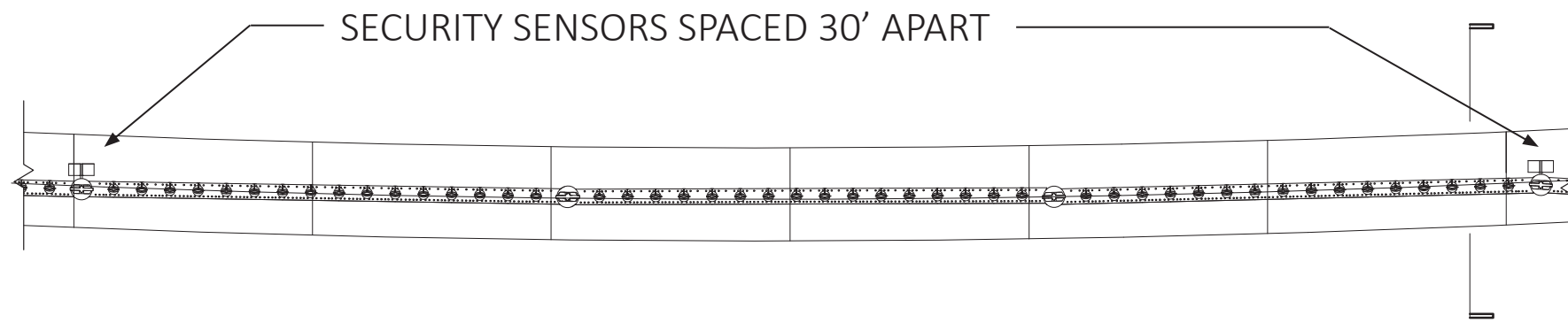


*Concept A (2" pickets with 5 1/2" clear space)*

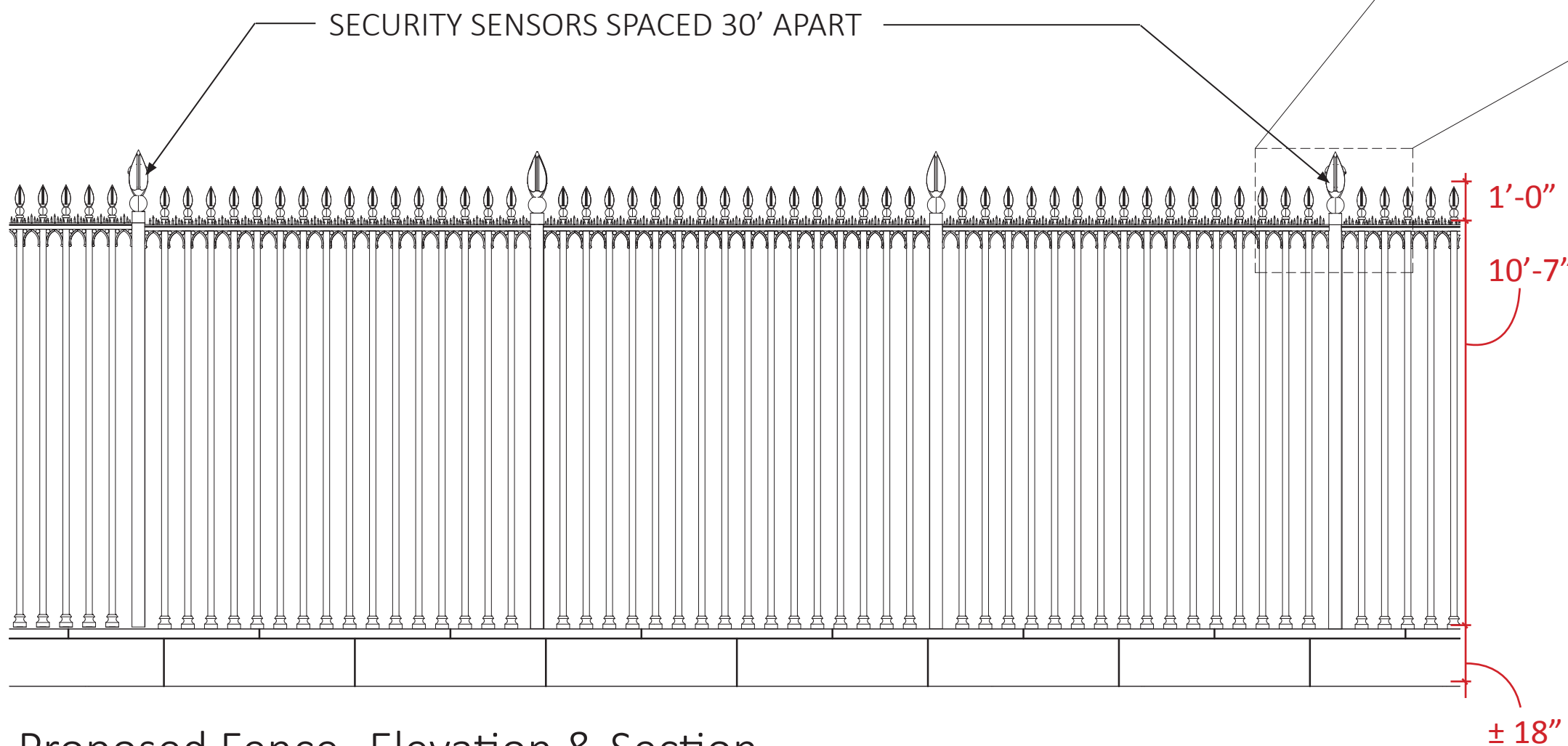
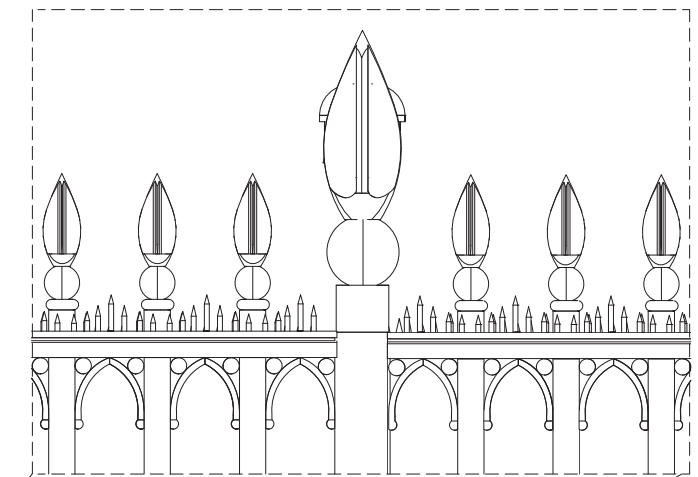


White House Complex Fence Phase 1  
July 7, 2016

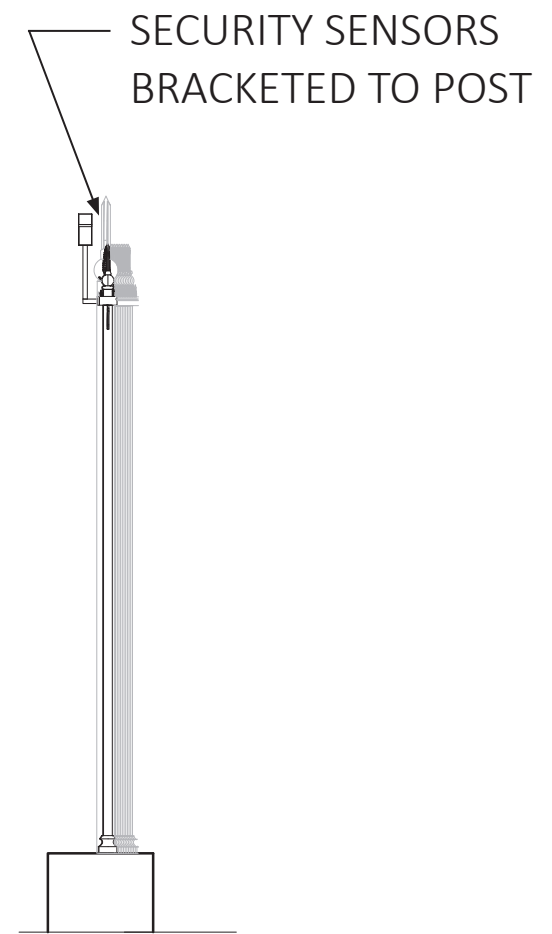
# Fence Concept at South Lawn From E Street

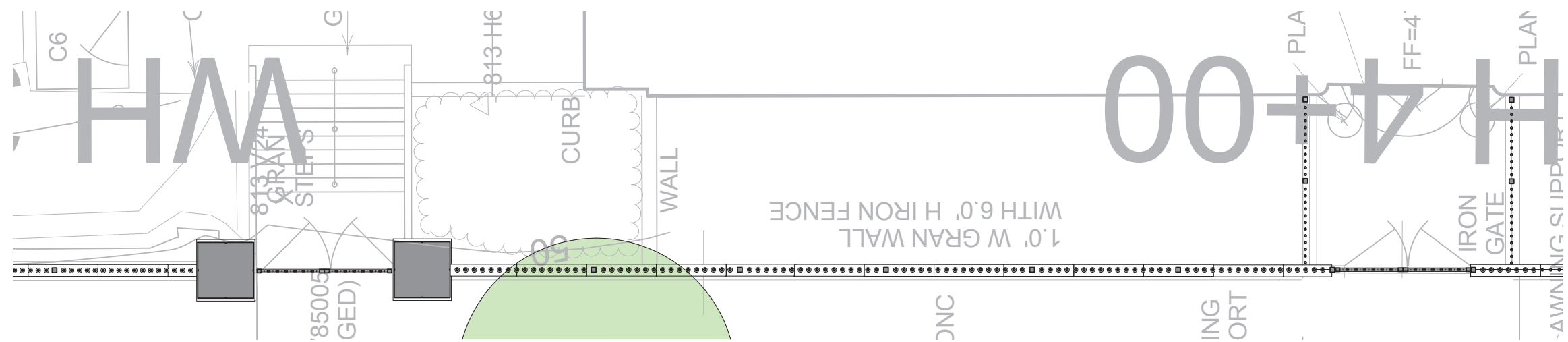


Proposed Fence- Plan

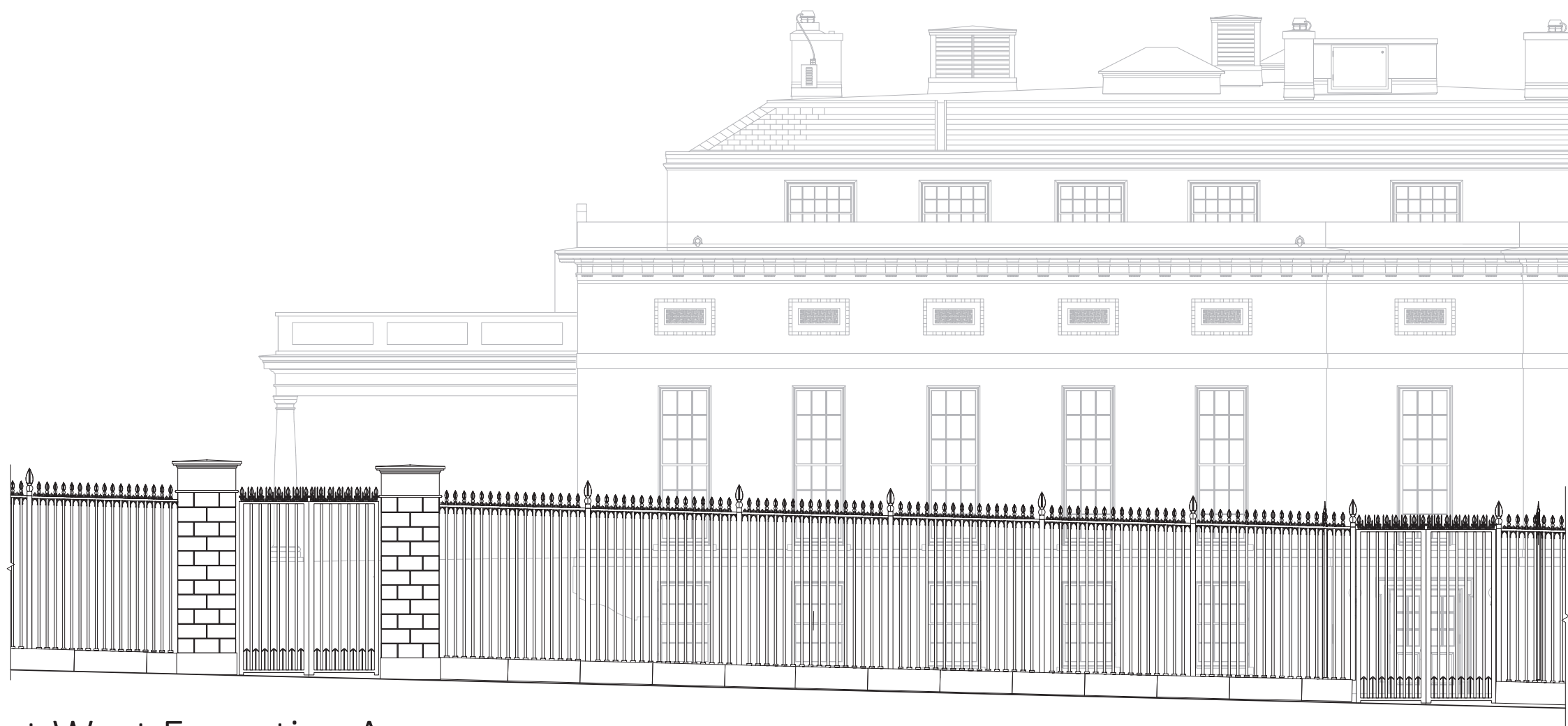


Proposed Fence- Elevation & Section  
*2" pickets with 5 1/2" clear space*





Partial Plan at West Executive Avenue



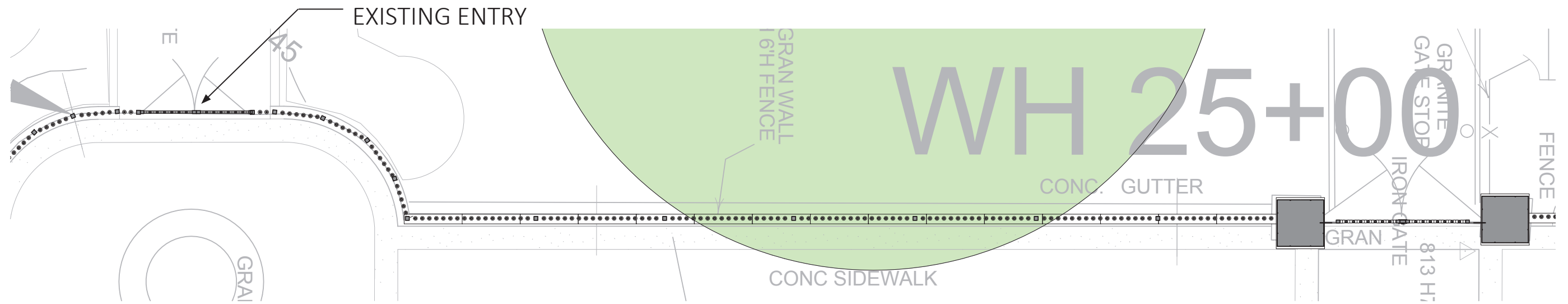
Elevation at West Executive Avenue

*2" pickets with 5 1/2" clear space*

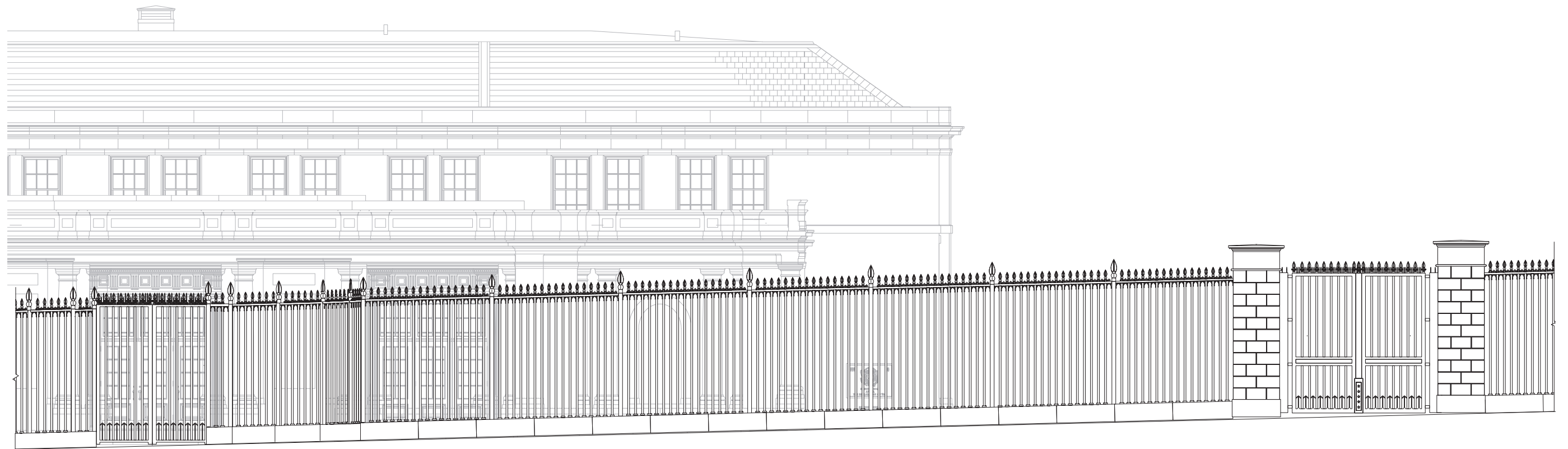


White House Complex Fence Phase 1  
July 7, 2016

White House Fence Concept  
at West Executive Avenue



Partial Plan at East Executive Avenue



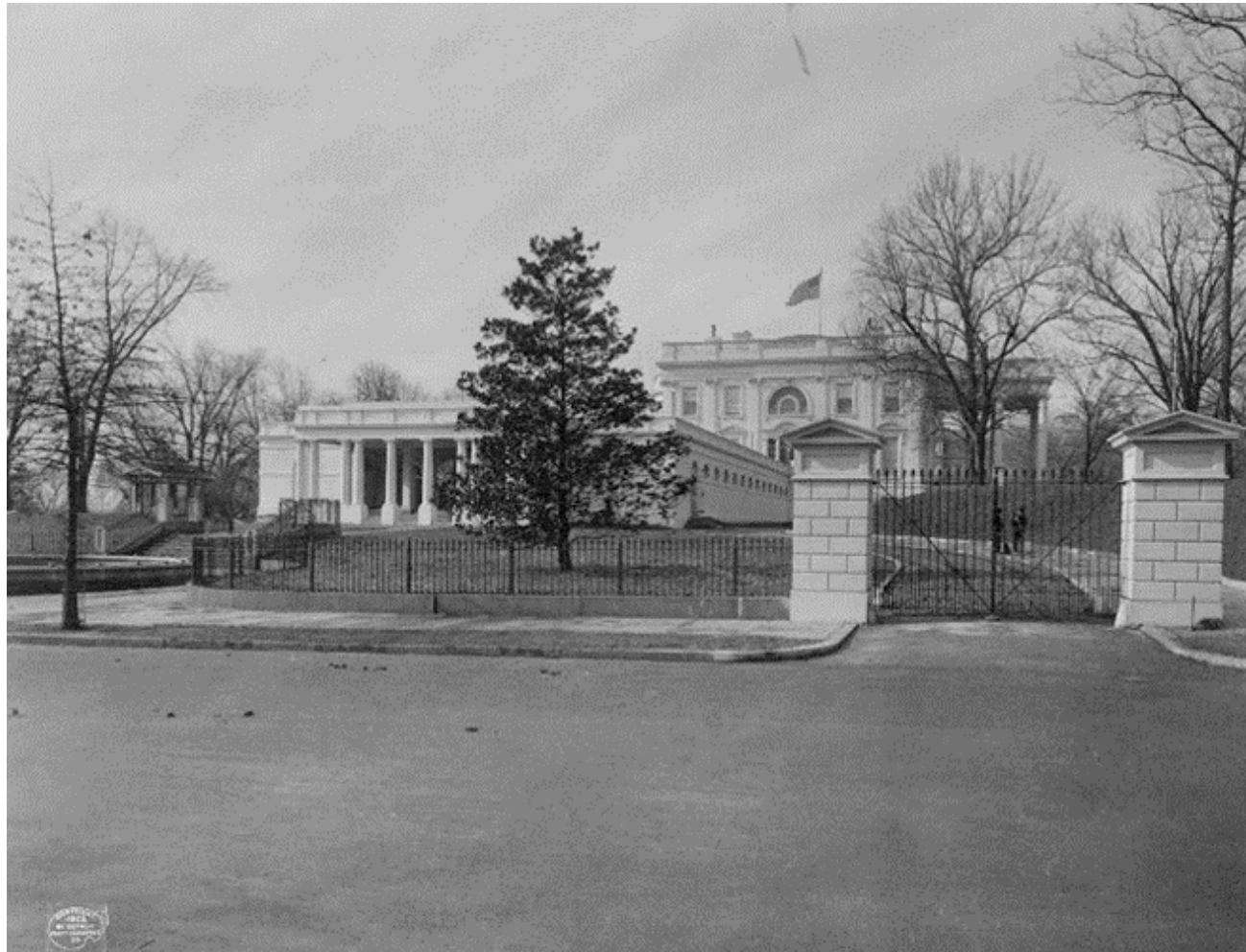
Elevation at East Executive Avenue

*2" pickets with 5 1/2" clear space*



White House Complex Fence Phase 1  
July 7, 2016

# White House Fence Concept at East Executive Avenue



East Executive Avenue  
*(Before ca. 1903)*



ca. 1820 Gate at Pennsylvania Ave.



White House Complex Fence Phase 1  
July 7, 2016

## Historic White House Gates



Pedestrian Gate  
Pennsylvania Ave



Visitor Entrance Gate  
East Executive

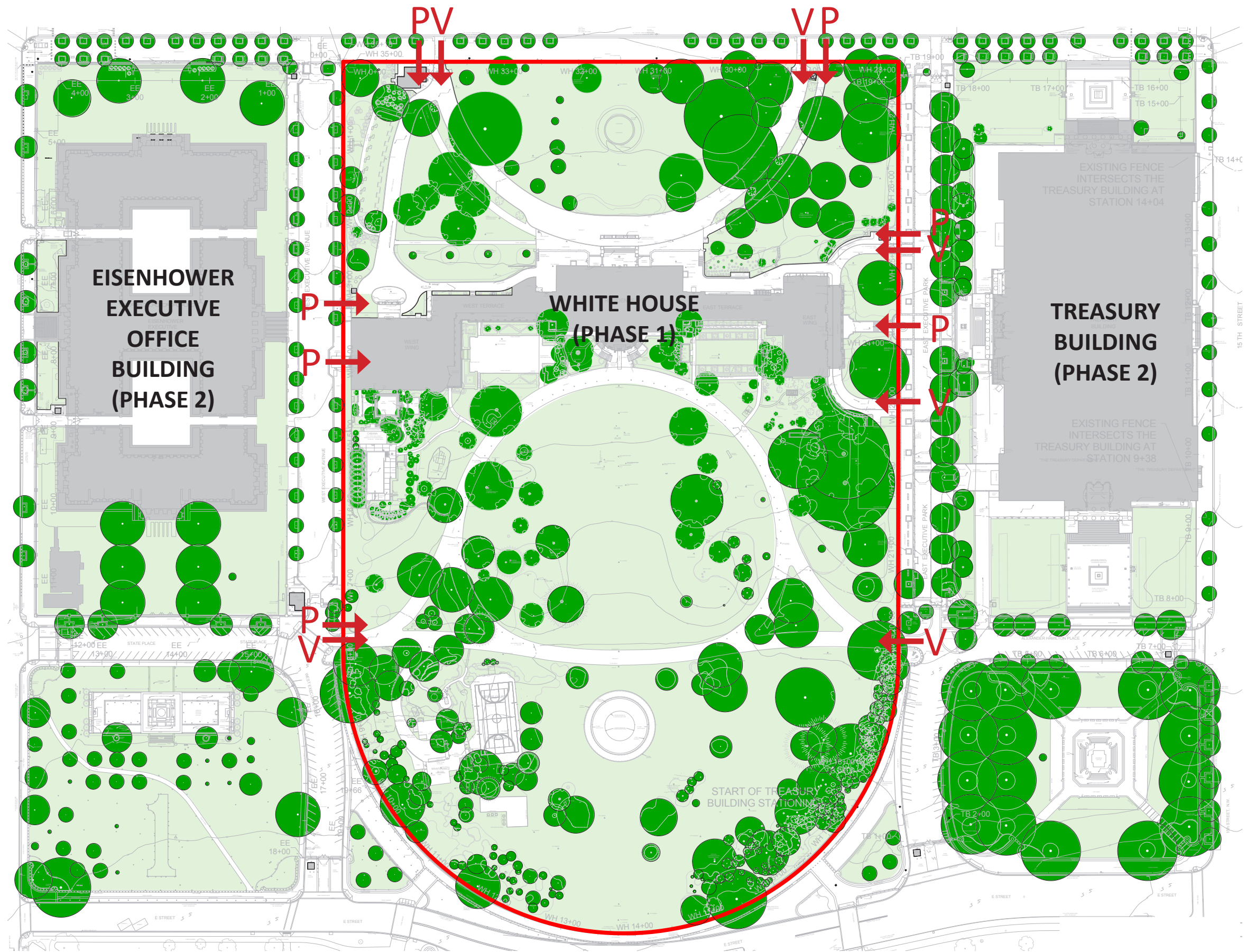


Vehicle Gate  
Gate to circular drive from Pennsylvania Ave



White House Complex Fence Phase 1  
July 7, 2016

# Existing White House Gates



**P-** Pedestrian Gate    **V-** Vehicle Gate

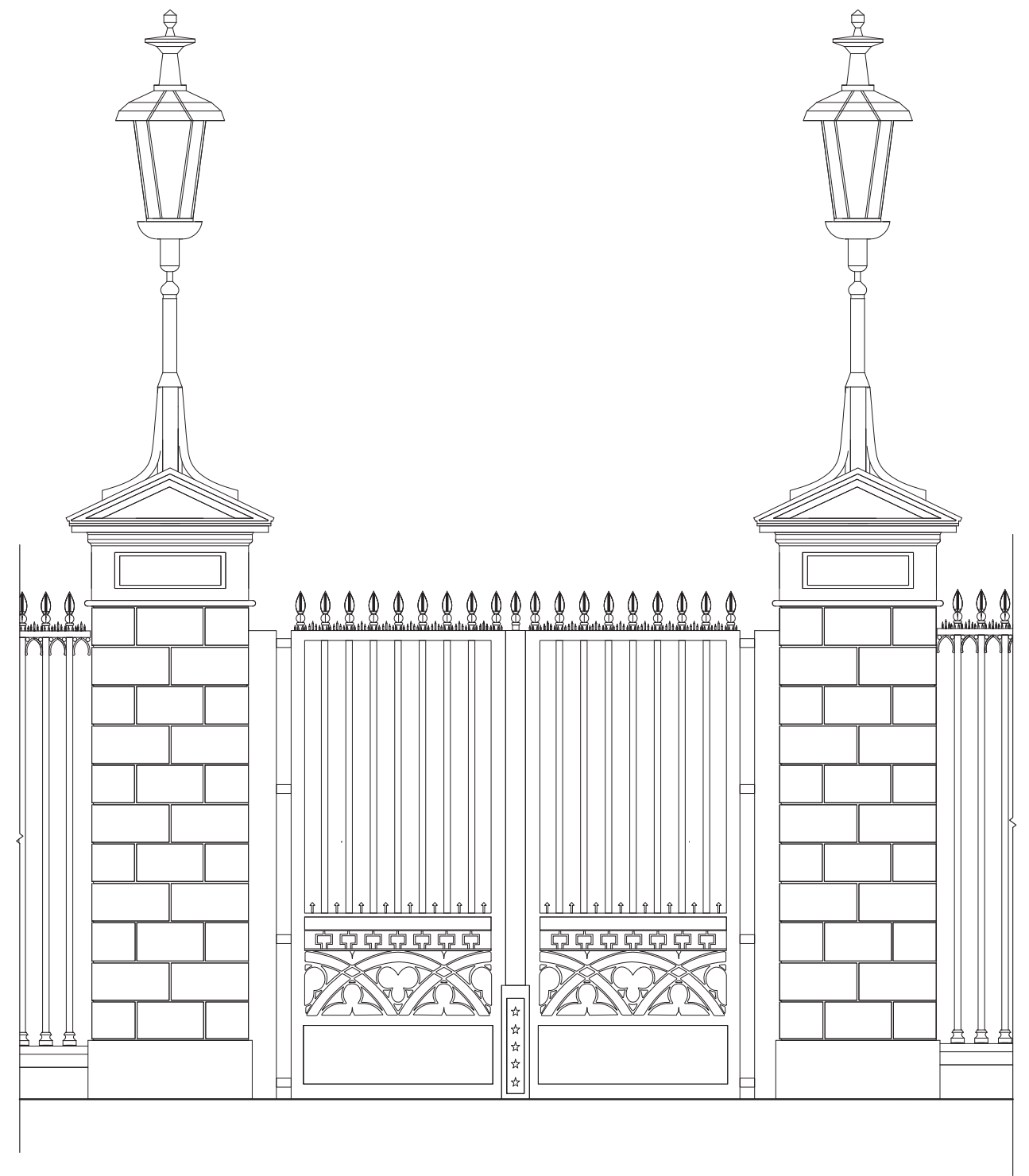


White House Complex Fence Phase 1  
July 7, 2016

# Gate Locations

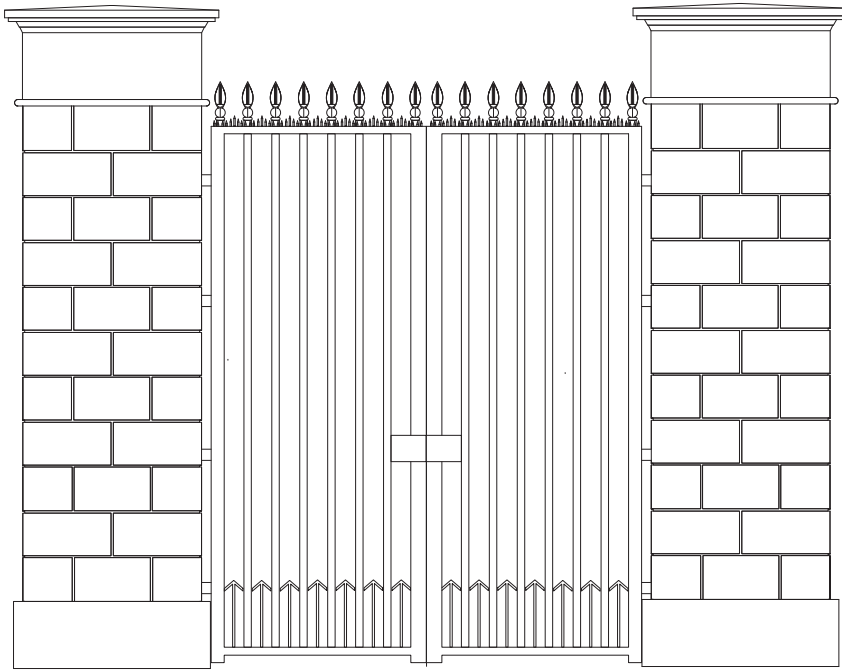


Vehicle Gate Concept: 13'-5" high x 16' wide  
East & West Executive

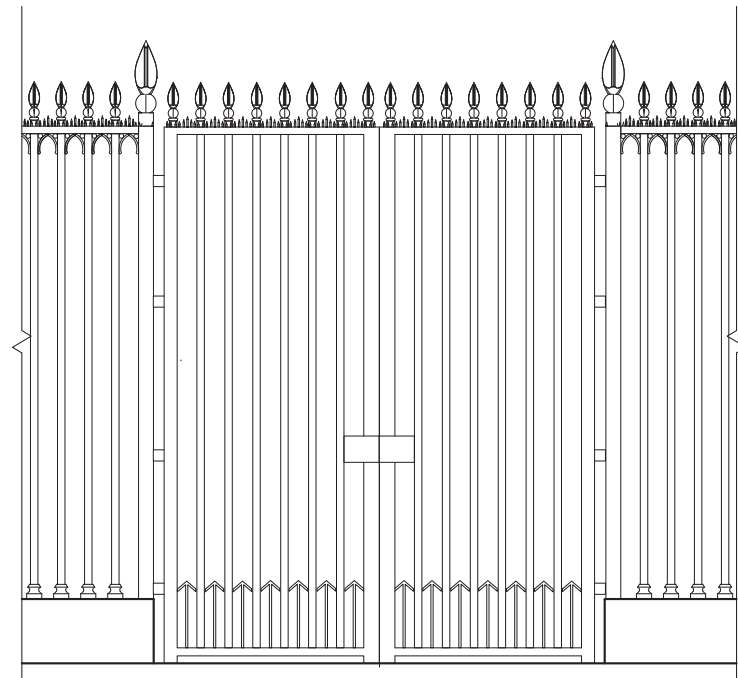


Vehicle Gate Concept: 13'-5" high x 16' wide  
Pennsylvania Ave.

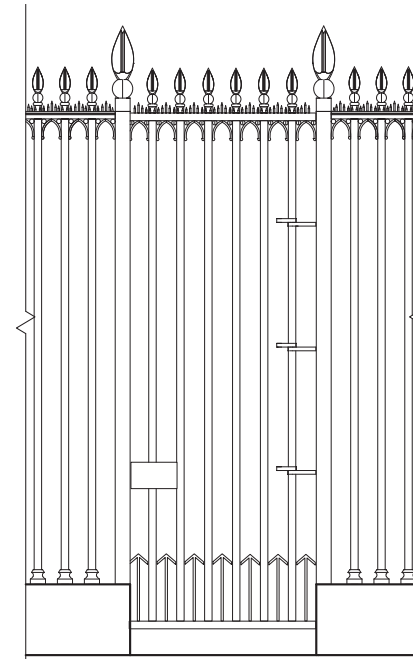




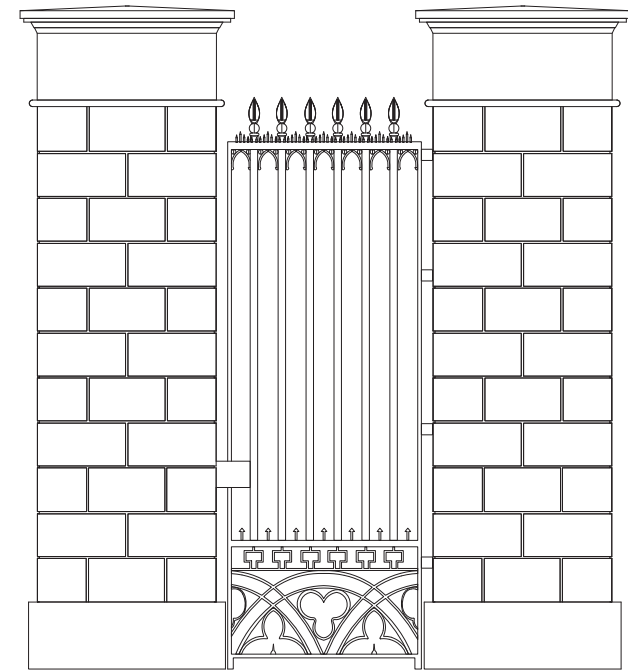
Pedestrian Gate Concept  
West Executive



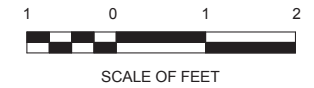
Pedestrian Gate Concept  
East & West Executive



Pedestrian Gate Concept  
East & West Executive



Pedestrian Gate Concept  
Pennsylvania Ave.





North side along Pennsylvania Avenue  
*Concept A (2" pickets with 5 1/2" clear space)*

## Elements of Concept Approval:

- Fence height
- Size and spacing of pickets
- Design approach for fence top and base
- Design approach for gates and piers



- CFA Final Review for Phase 1 - White House Grounds  
Winter 2016/2017
- CFA information presentation for Phase 2 – Treasury and  
Eisenhower Executive Office Buildings  
Spring 2017
- Begin Phase I Construction  
2017





Presentation to the National Capital Planning Commission:  
White House Complex Fence Phase 1 | July 7, 2016

**M+S**<sup>a</sup>  
Mills + Schnoering Architects, LLC  
Architecture + Historic Preservation