



Presentation to the National Capital Planning Commission:  
White House Complex Fence Phase 1 | December 1, 2016



**M+S**<sup>a</sup>  
Mills + Schnoering Architects, LLC  
Architecture + Historic Preservation

- Meet the security requirements of the US Secret Service
- Support the aesthetic and historic preservation goals of the National Park Service
- Maintain the quality of the visitor experience
- Evoke a spirit of freedom and strength for the White House and grounds

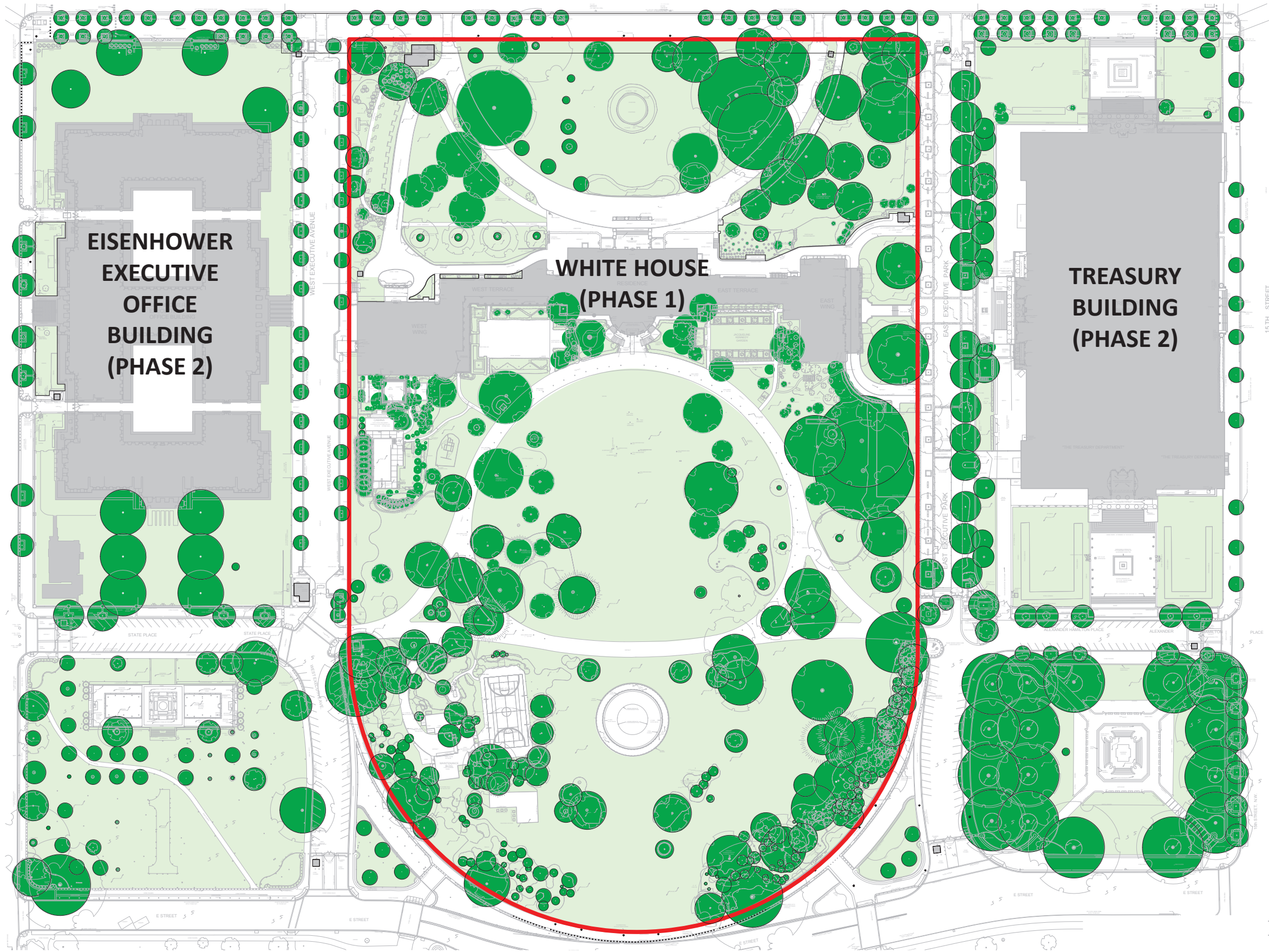


# Commission of Fine Arts Approval Conditions

June 16, 2016:

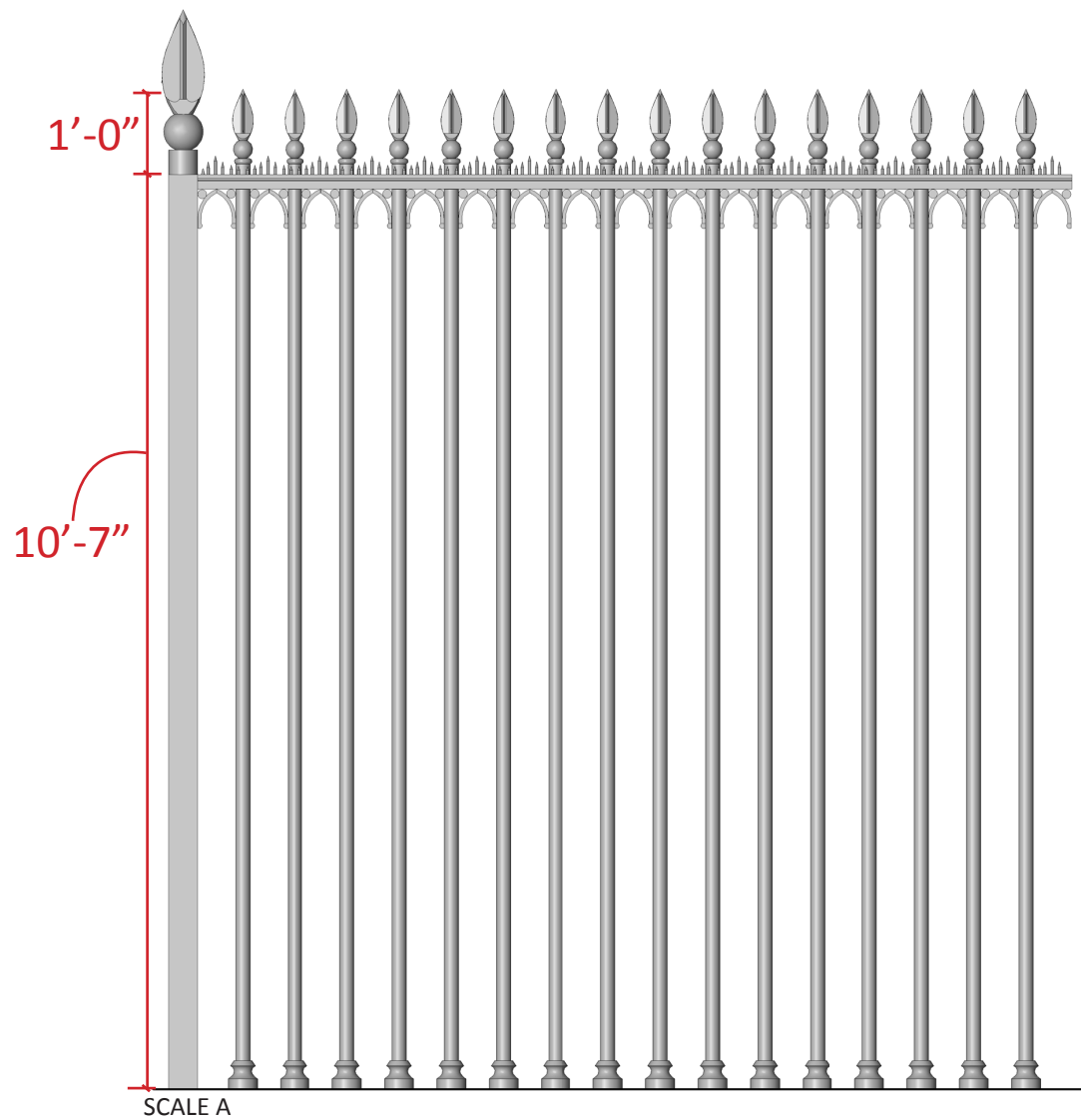
- Study fence elements to achieve a balance of simplicity, detail, and hierarchy.
- Preserve mature trees adjacent to fence
- Full size mock-up for review by Commission





White House Complex Fence Phase 1  
December 1, 2016

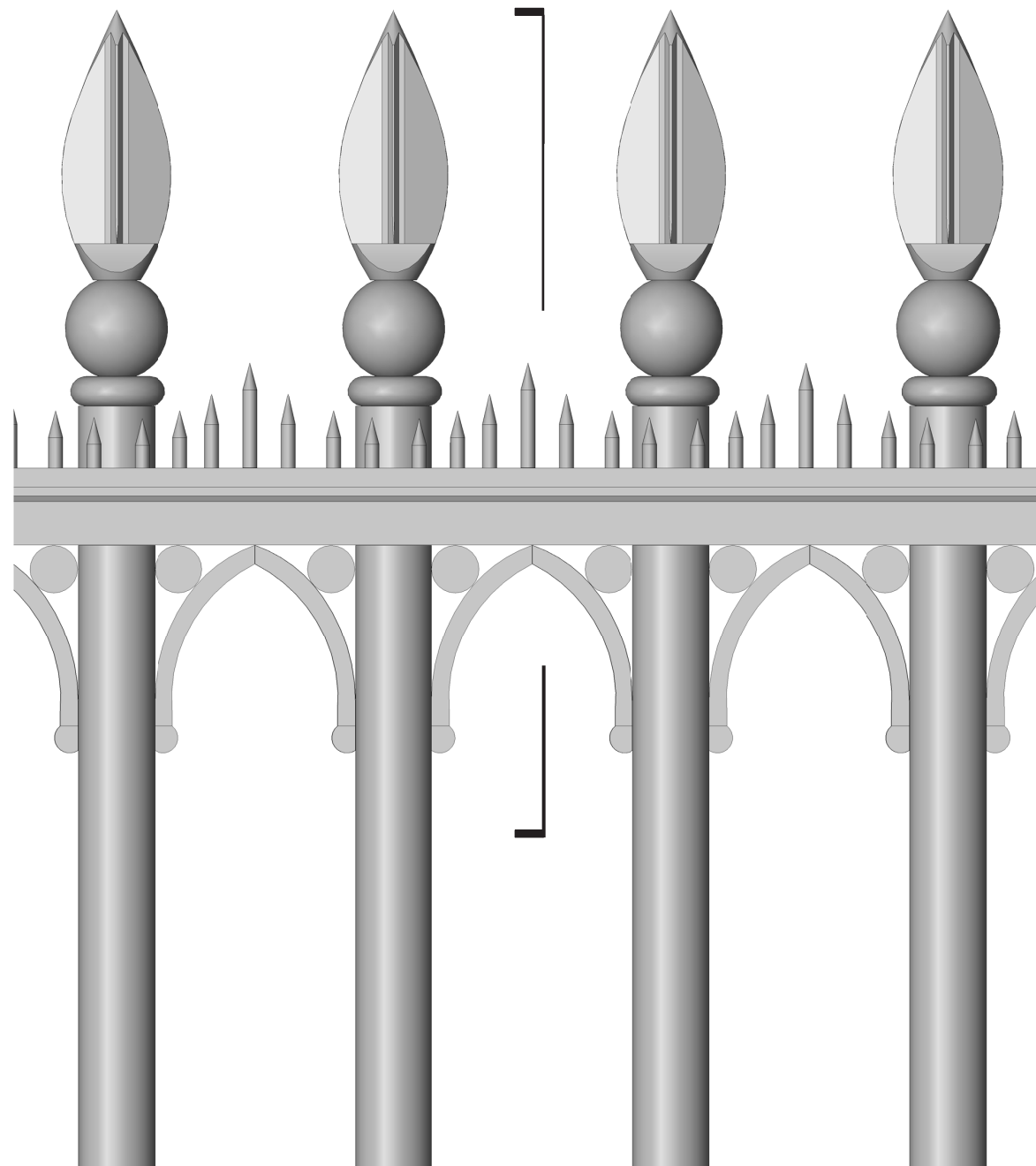
Project Area



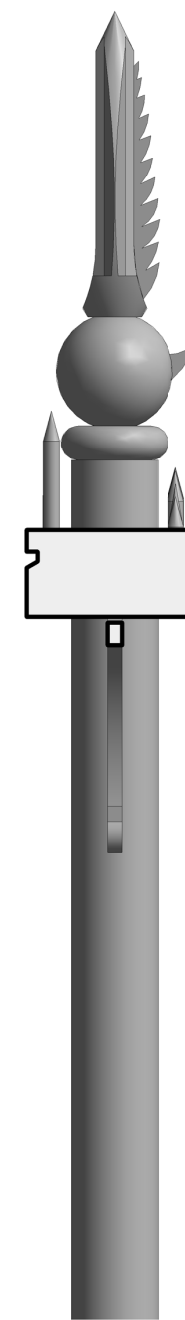
SCALE A

**2" dia. Pickets with 5-1/2" Clear Space**

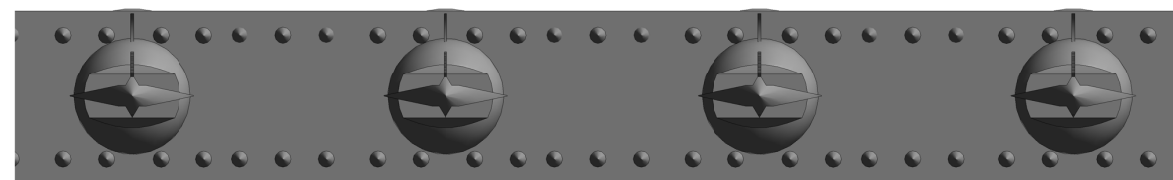
- BEST BALANCE OF PROPORTION AND PERFORMANCE
- WIDEST OPEN SPACE BETWEEN PICKETS
- COMPARABLE METRICS TO OPTION WITH 1 3/4" PICKETS
- LEAST DENSITY OF PICKET FINIALS
- MOST EFFECTIVE PROTECTION



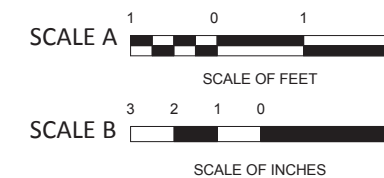
SCALE B

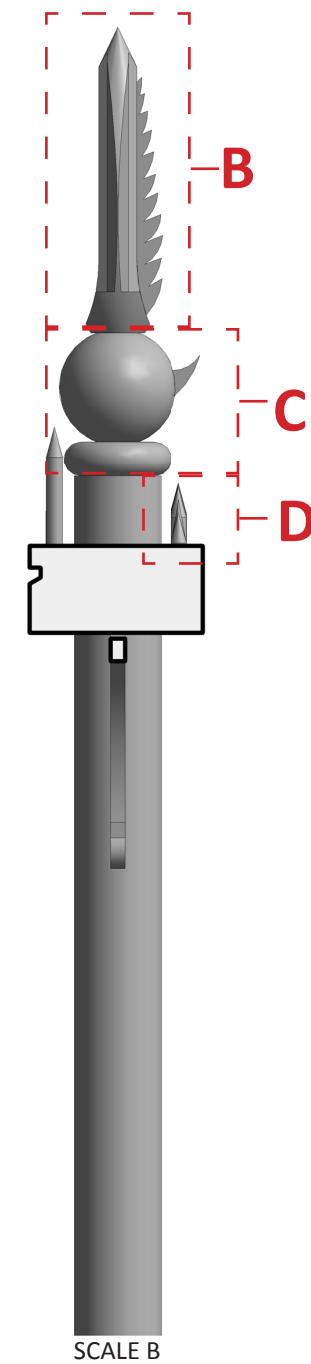
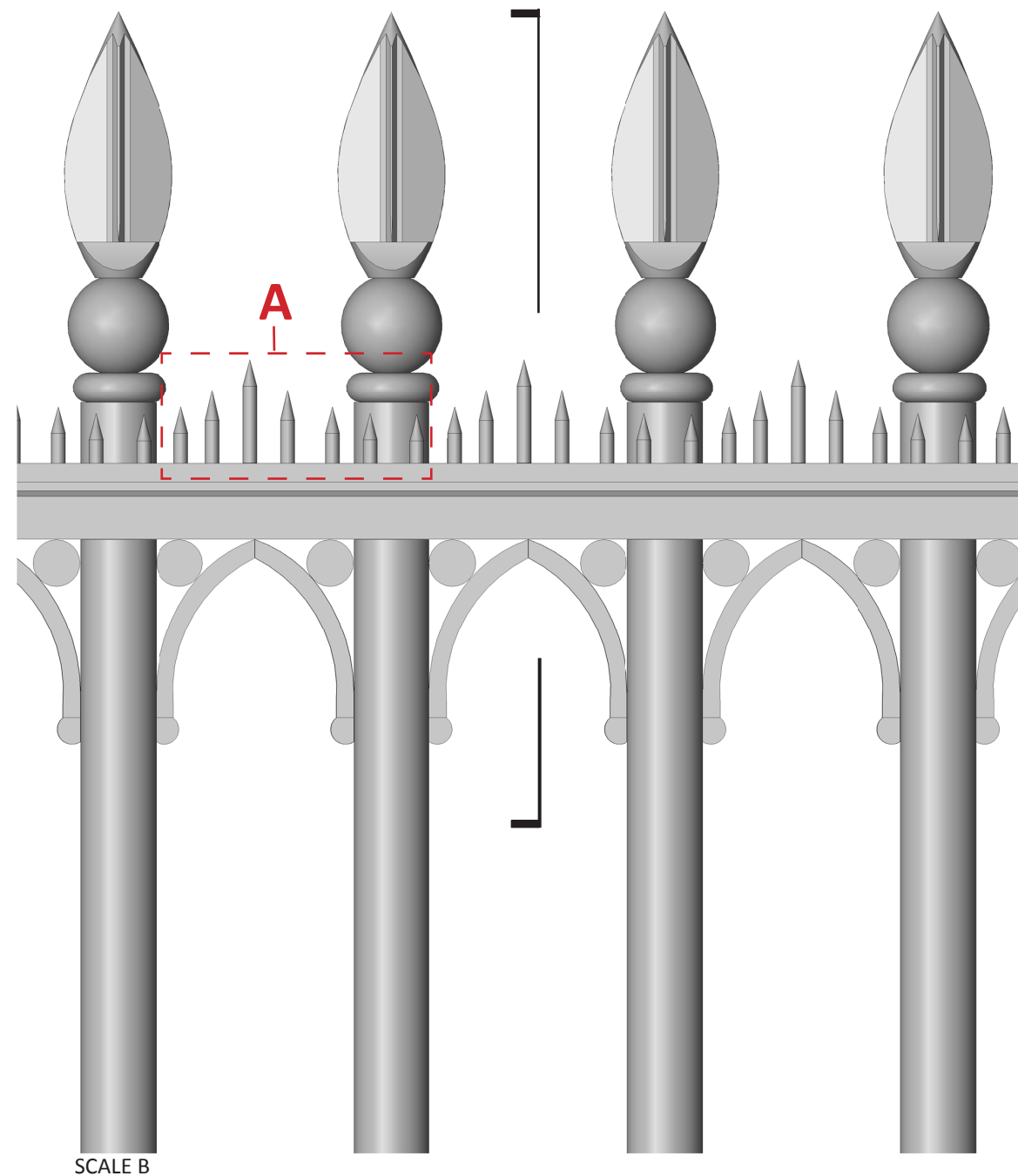
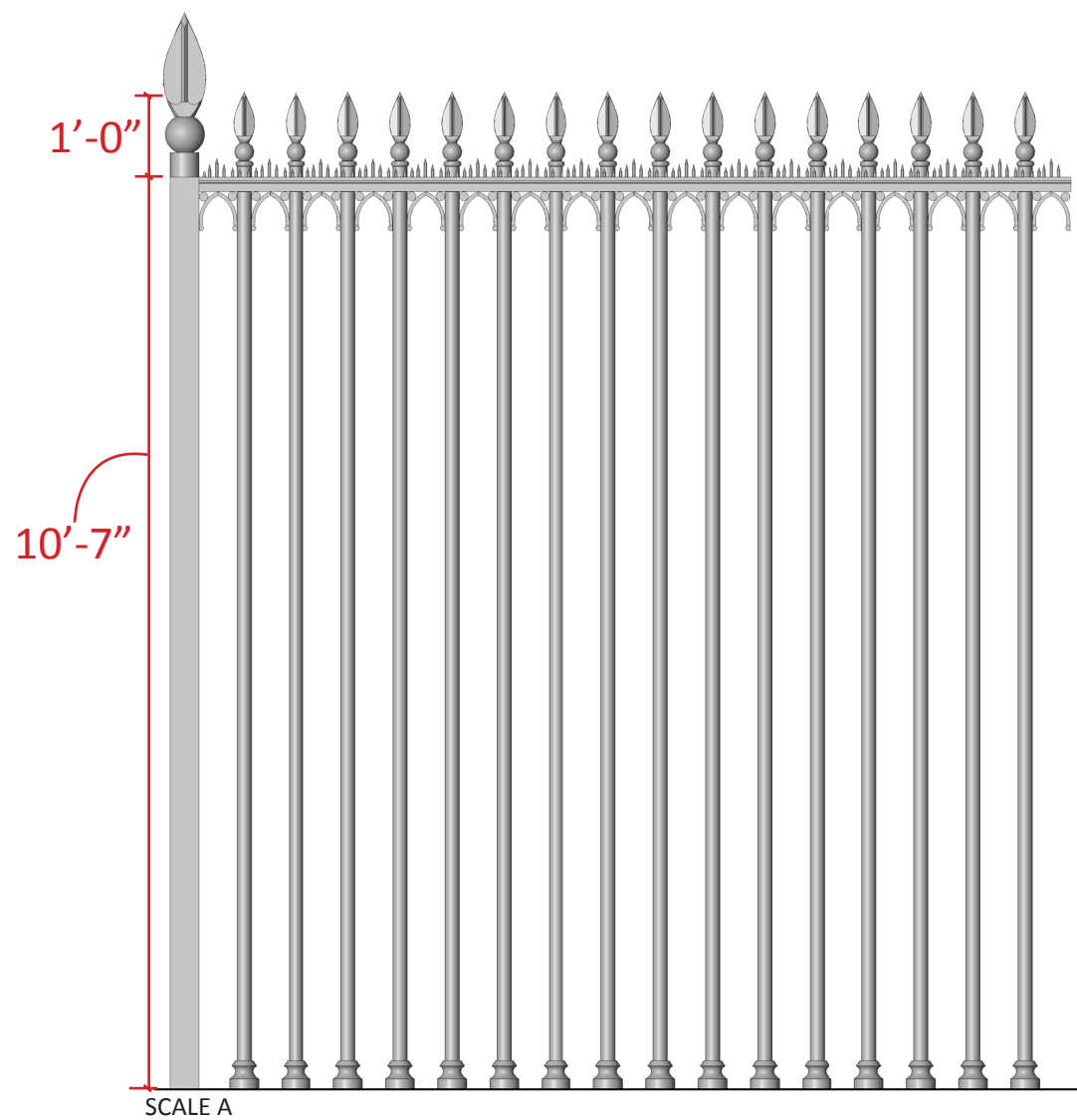


SCALE B

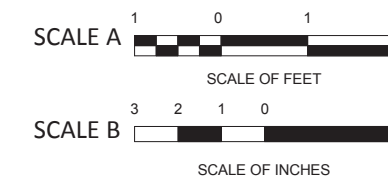
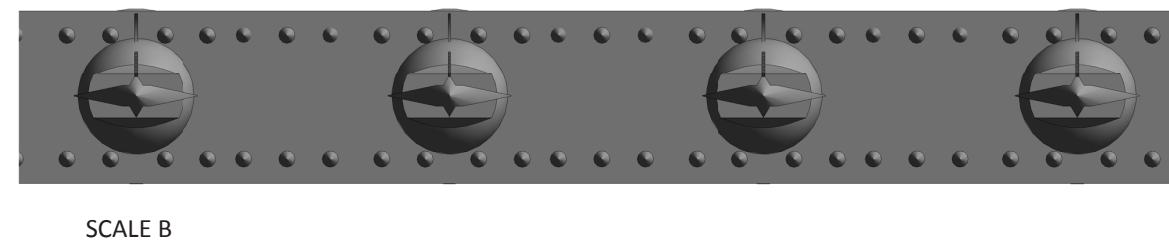


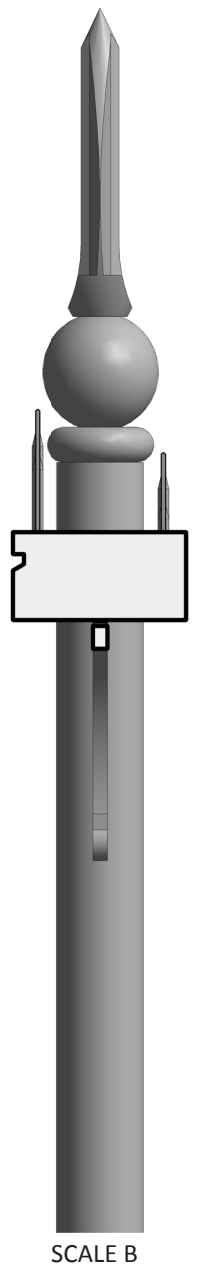
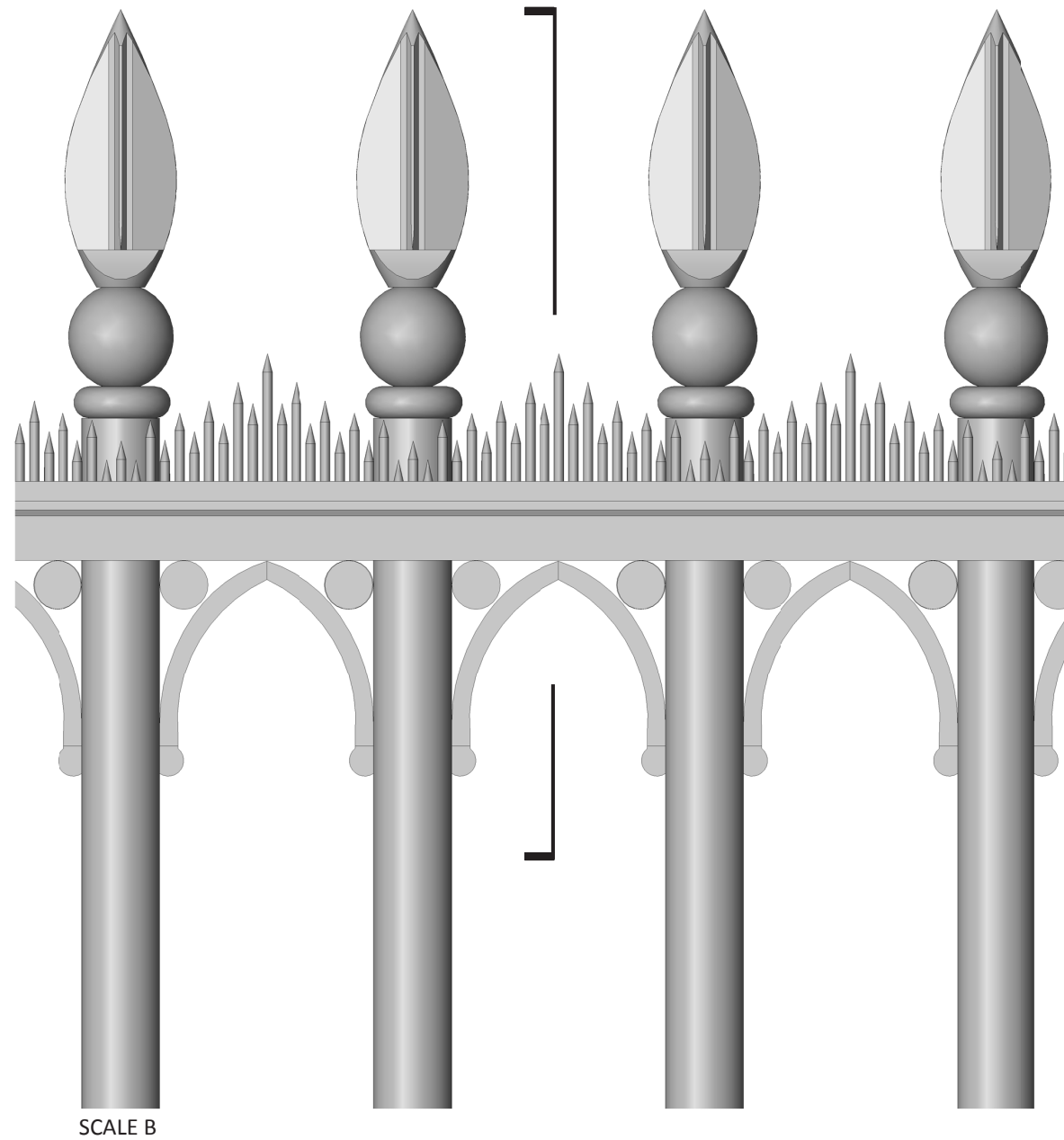
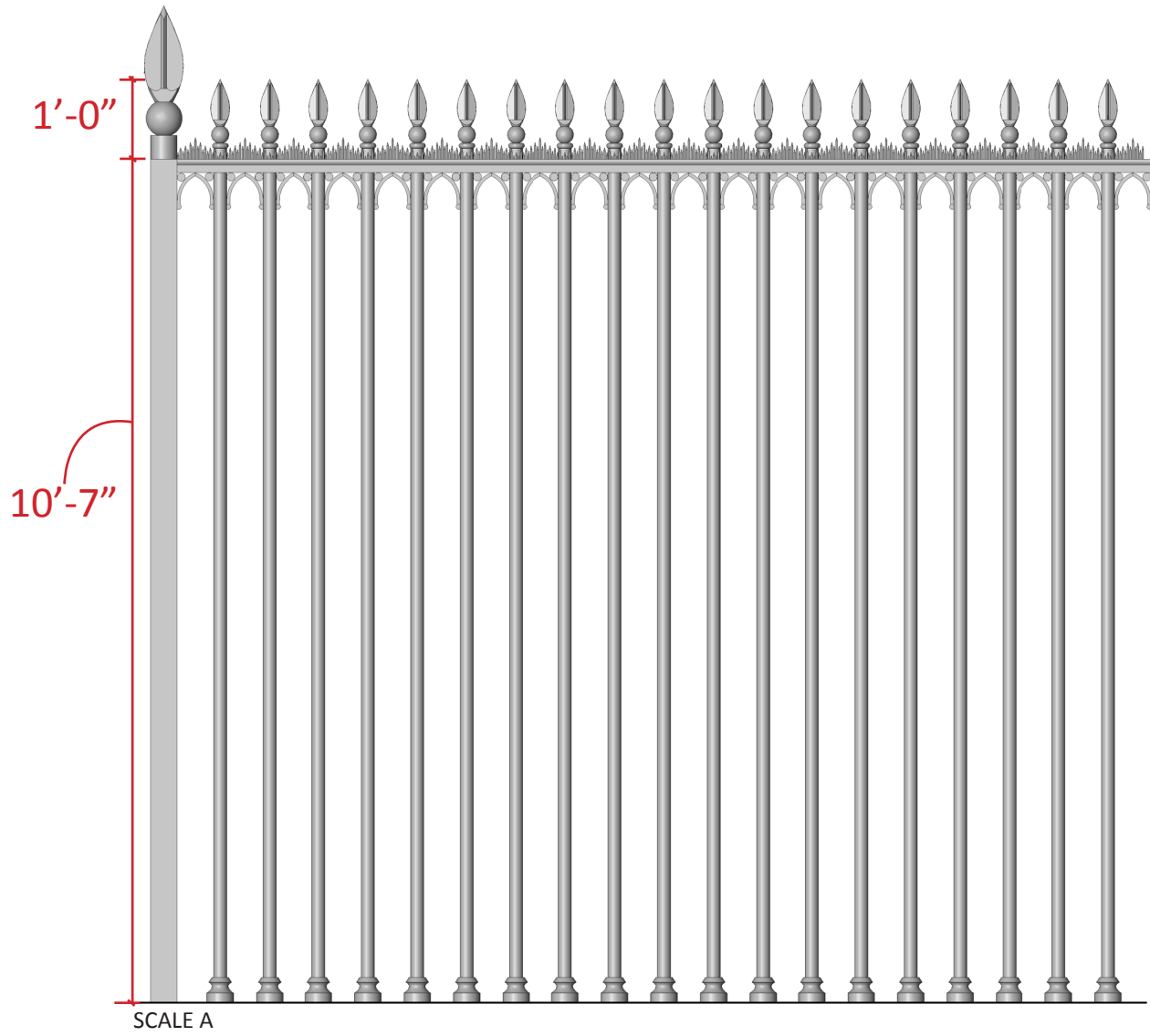
SCALE B



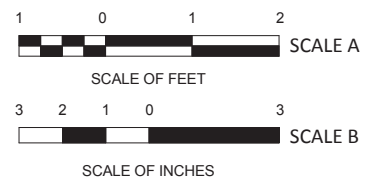
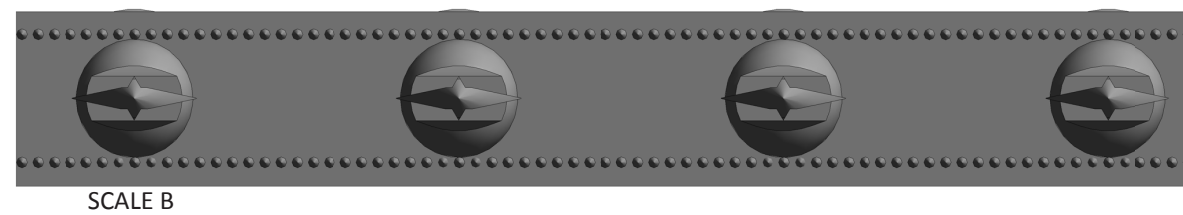


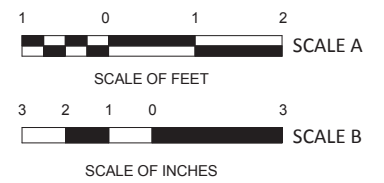
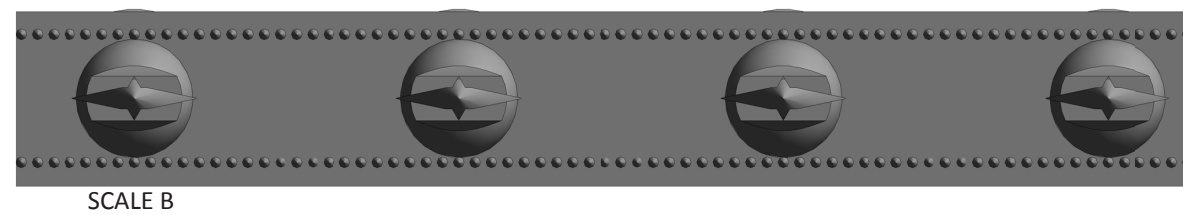
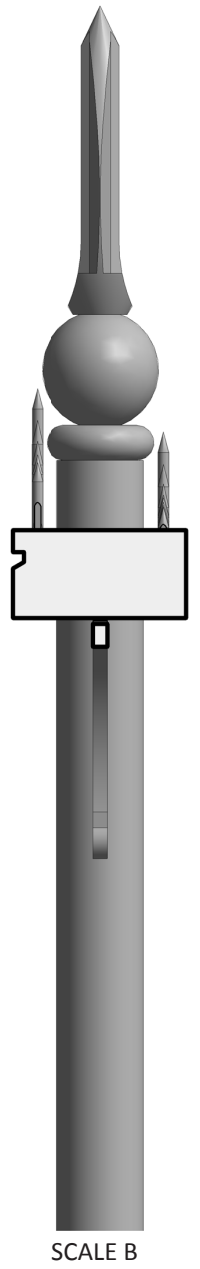
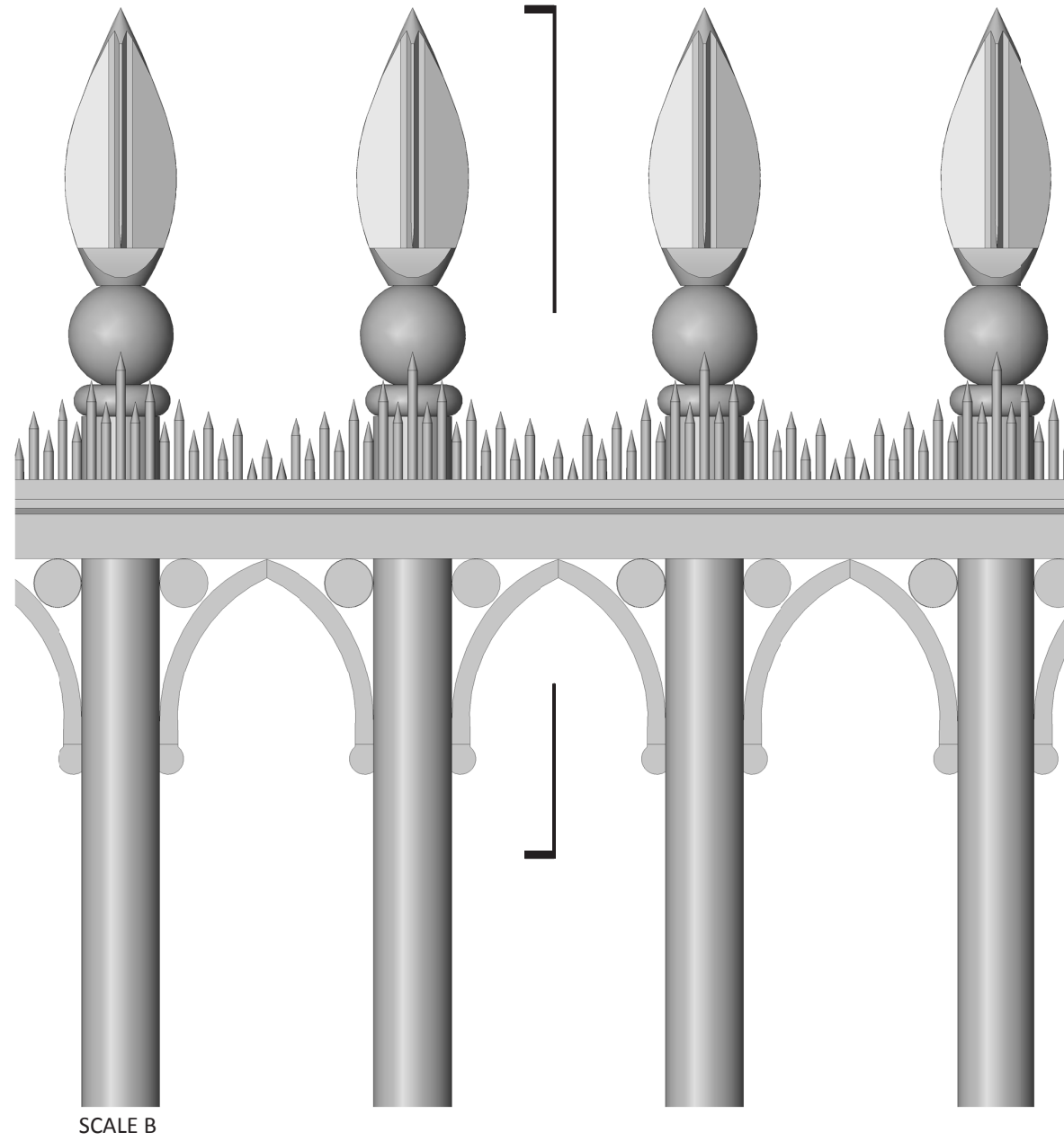
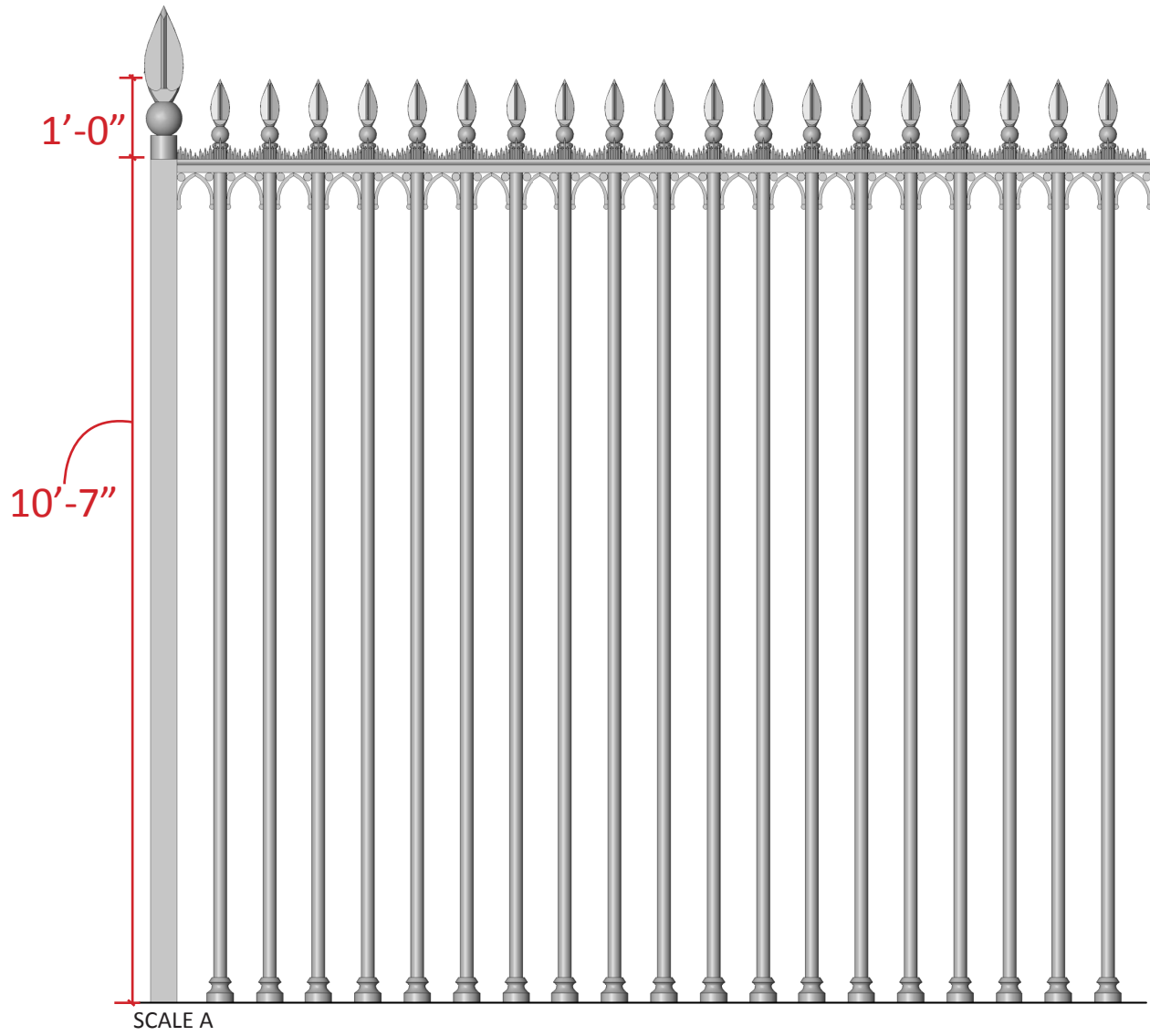
- A.** TIGHTER ARRAY OF “PENCIL SPIKES”
- B.** SERRATED EDGE NOT REQUIRED IF SPIKES IMPROVED
- C.** KNIFE EDGE ON DECORATIVE BALL NOT REQUIRED.
- D.** BACK ROW OF SPIKES LOWER THAN FRONT ROW.





- 1/4" DIAMETER SPIKES AT 3/8" ON CENTER
- SPIKE ELEVATION RESPONDS TO THE CURVE OF ORNAMENTAL ARCHES BELOW
- PICKET SPEARS ARE CENTERED WITHIN THE RAIL
- FRONT PENCIL SPIKES ARE 3/8" FROM RAIL EDGE
- BACK ROW OF SPIKES ARE 3/8" FROM RAIL EDGE AND ARE LOWER THAN THE FRONT ROW



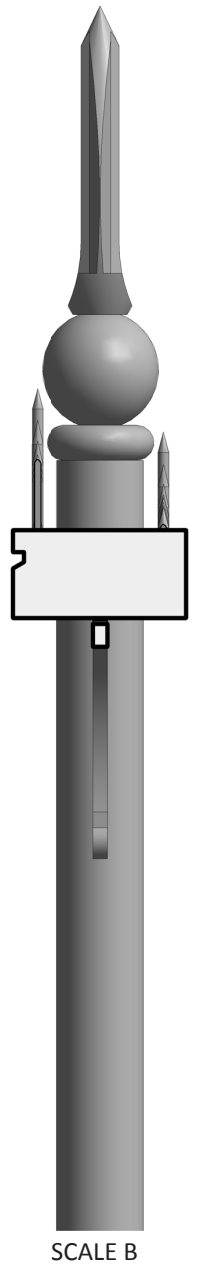
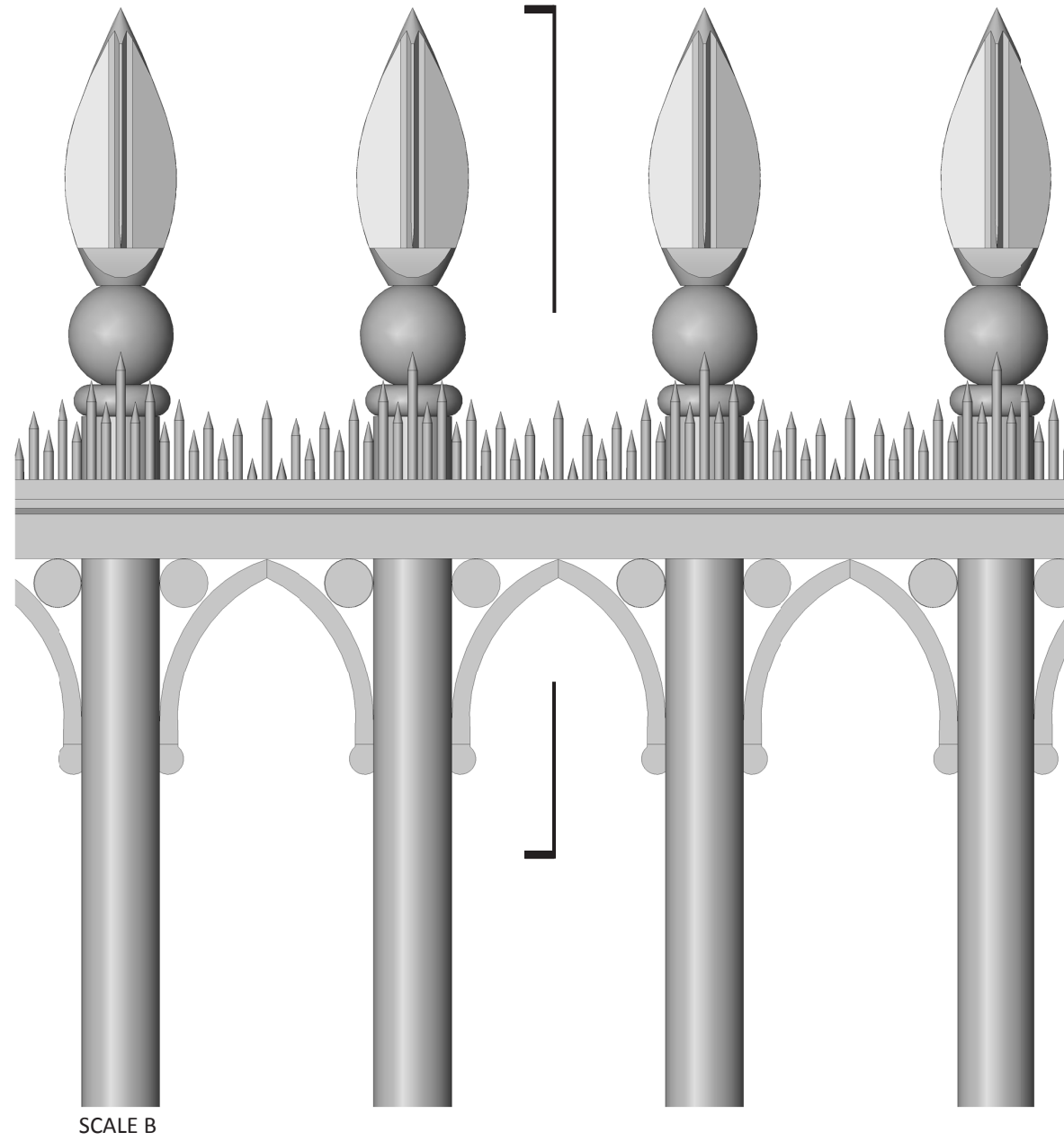
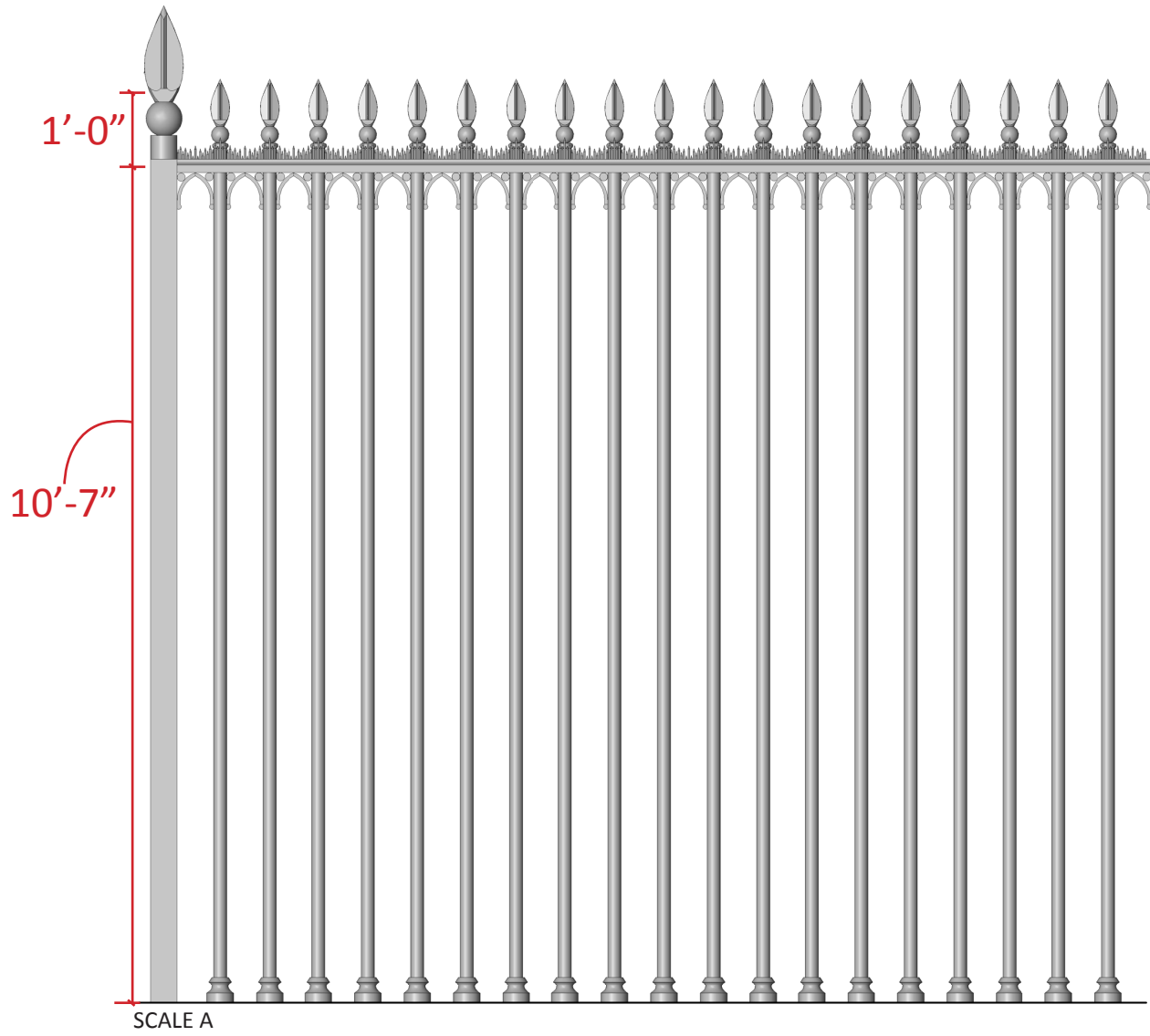


- 1/4" DIAMETER SPIKES AT 3/8" ON CENTER
- PICKET SPEARS ARE CENTERED WITHIN THE RAIL
- FRONT PENCIL SPIKES ARE 3/8" FROM RAIL EDGE
- BACK ROW OF SPIKES ARE 3/8" FROM RAIL EDGE AND ARE LOWER THAN THE FRONT ROW

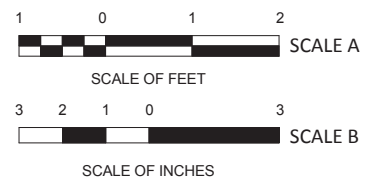
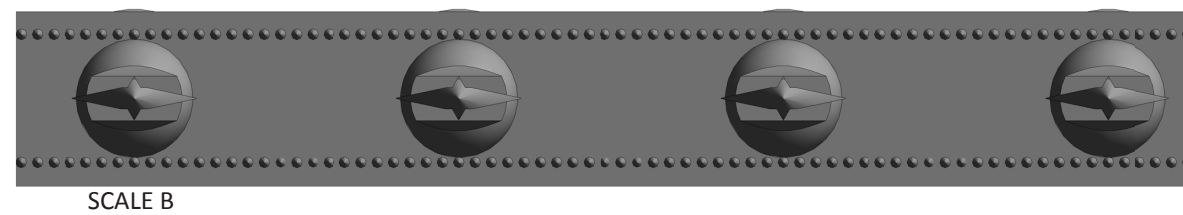


White House Complex Fence Phase 1  
December 1, 2016

# Fence Top Option 1B (USSS + NPS Preferred Option)

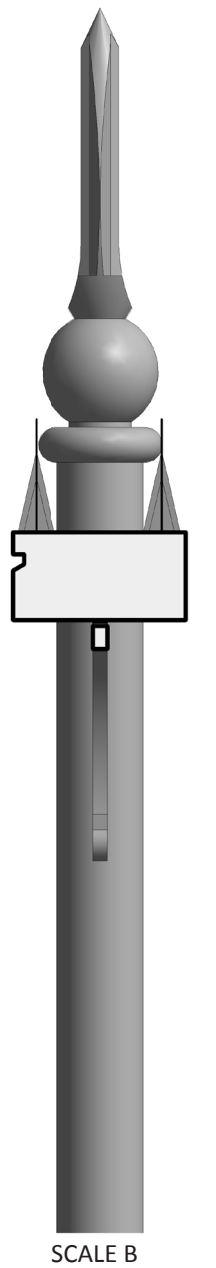
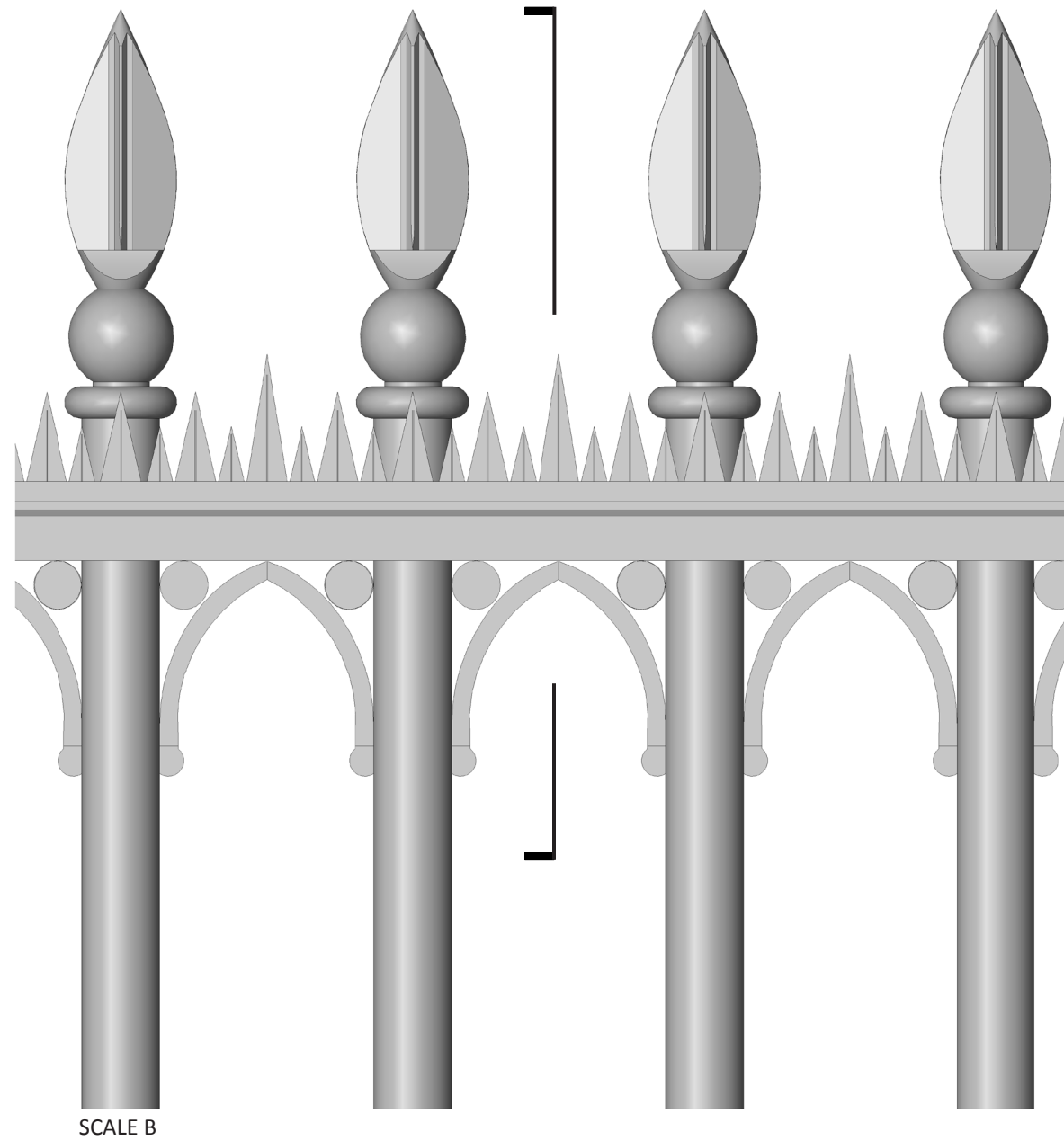
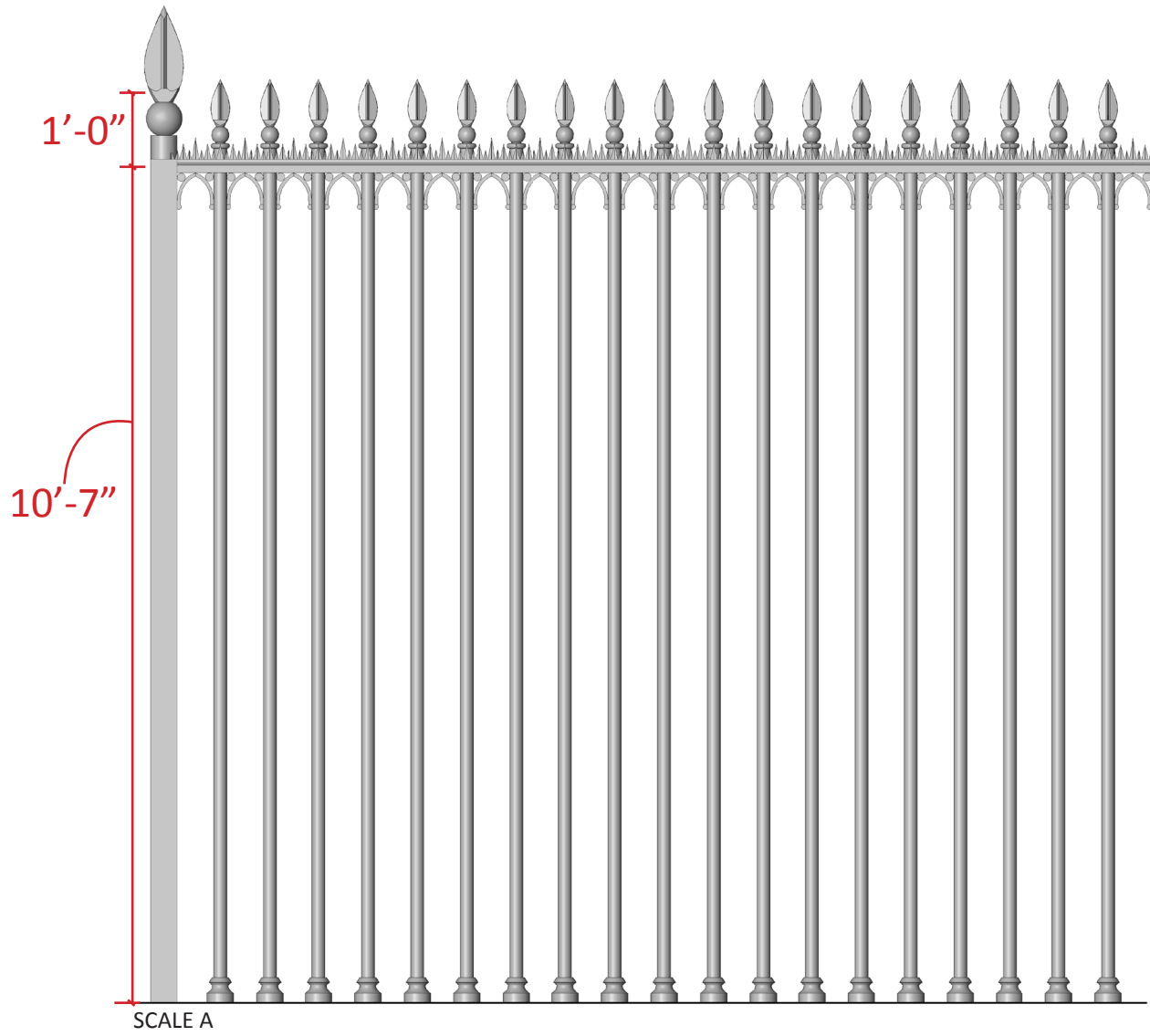


- 1/4" DIAMETER SPIKES AT 3/8" ON CENTER
- PICKET SPEARS ARE CENTERED WITHIN THE RAIL
- FRONT PENCIL SPIKES ARE 3/8" FROM RAIL EDGE
- BACK ROW OF SPIKES ARE 3/8" FROM RAIL EDGE AND ARE LOWER THAN THE FRONT ROW

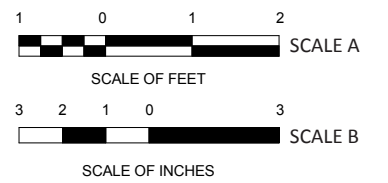
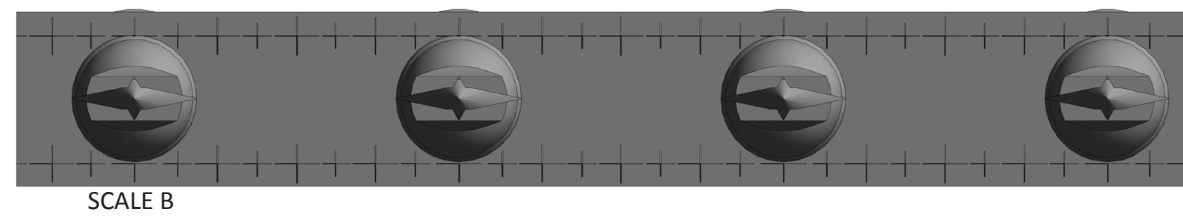


White House Complex Fence Phase 1  
December 1, 2016

# Fence Top Option 1C



- CROSS-TEETH WITH SERRATED EDGES
- DESIGN PROTECTS BAY BETWEEN PICKET FINIALS
- BACK ROW OF TEETH IS THE SAME AS THE FRONT ROW





North side along Pennsylvania Avenue  
*Existing Conditions*



North side along Pennsylvania Avenue  
*Proposed Fence*



White House Complex Fence Phase 1  
December 1, 2016

Proposed Fence at  
Pennsylvania Avenue



*Existing Conditions*



White House Complex Fence Phase 1  
December 1, 2016

Existing Fence from Pennsylvania Ave



*Proposed Fence*



White House Complex Fence Phase 1  
December 1, 2016

Proposed Fence from Pennsylvania Ave



*Proposed Fence*



White House Complex Fence Phase 1  
December 1, 2016

# Proposed Fence from Lafayette Park



*Proposed Fence*



White House Complex Fence Phase 1  
December 1, 2016

Proposed Fence from Pennsylvania Ave



*East Gates*



White House Complex Fence Phase 1  
December 1, 2016

# Proposed Fence & Gates from Pennsylvania Ave



*Existing Conditions*



White House Complex Fence Phase 1  
December 1, 2016

Existing Fence at South Lawn  
From E Street



*Proposed Fence*



White House Complex Fence Phase 1  
December 1, 2016

# Proposed Fence at South Lawn From E Street

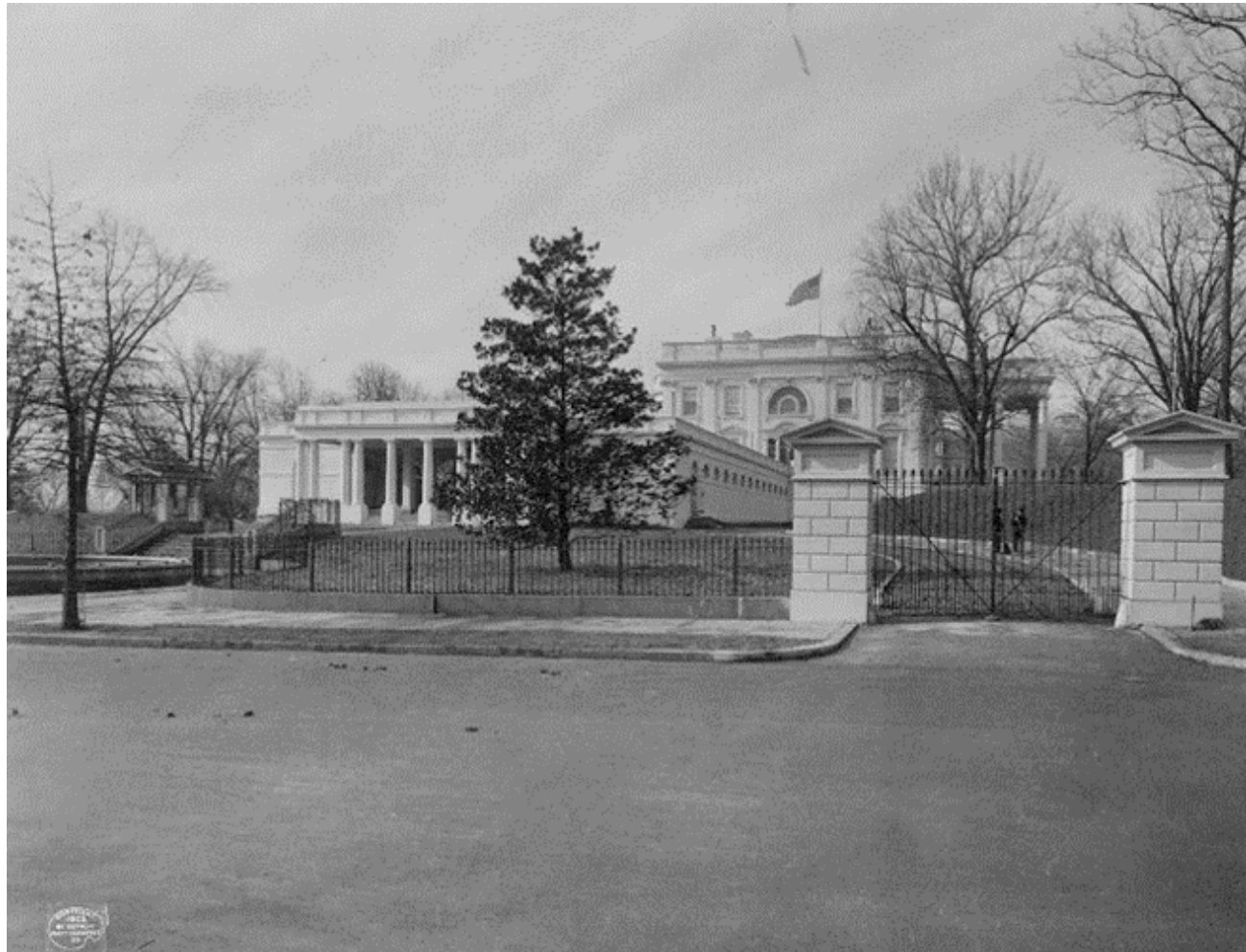


*Proposed Fence*



White House Complex Fence Phase 1  
December 1, 2016

Proposed Fence at South Lawn  
From Ellipse



East Executive Avenue  
*(Before ca. 1903)*



ca. 1820 Gate at Pennsylvania Ave.



White House Complex Fence Phase 1  
December 1, 2016

## Historic White House Gates



Pedestrian Gate  
Pennsylvania Ave



Visitor Entrance Gate  
East Executive

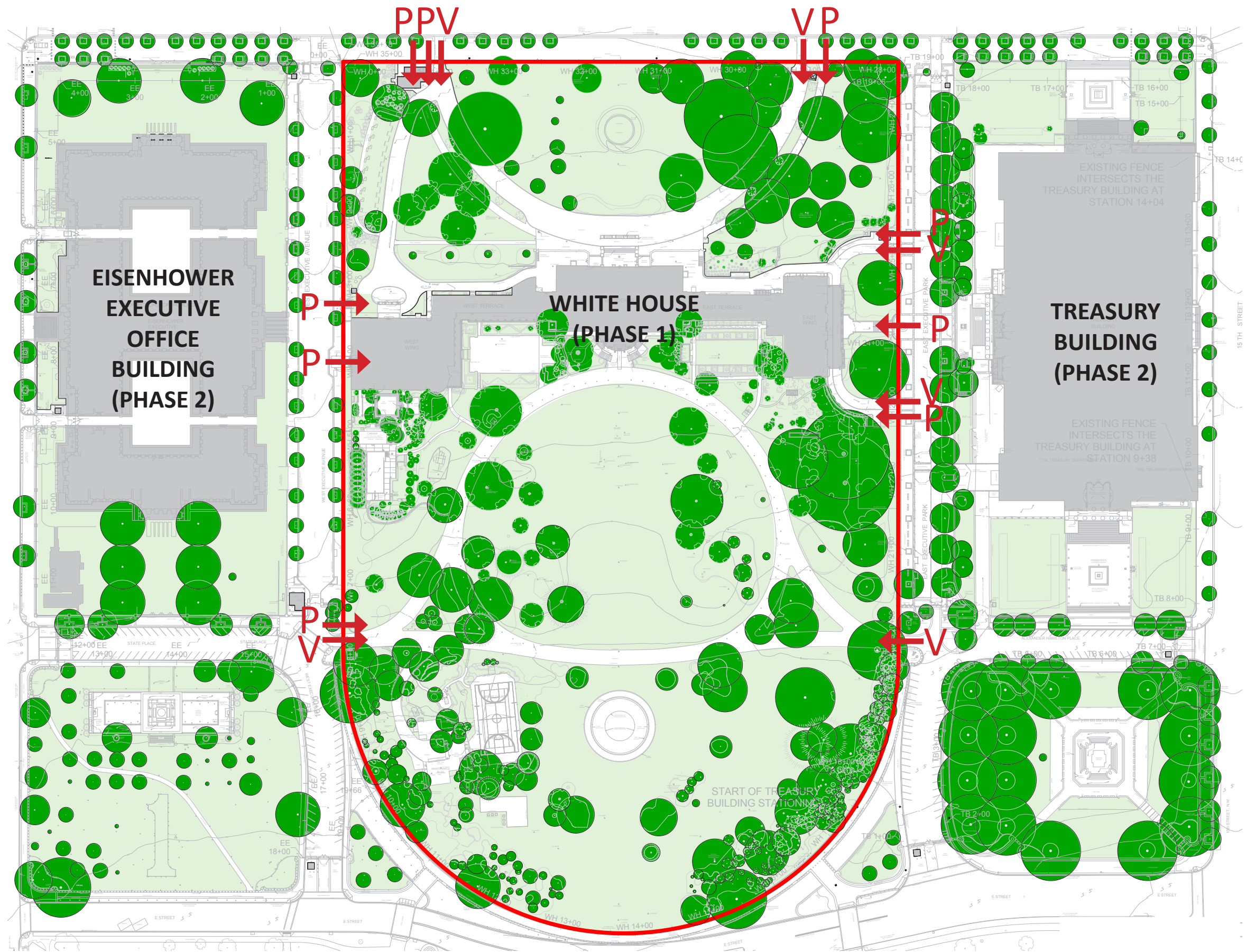


Vehicle Gate  
Gate to circular drive from Pennsylvania Ave



White House Complex Fence Phase 1  
December 1, 2016

# Existing White House Gates

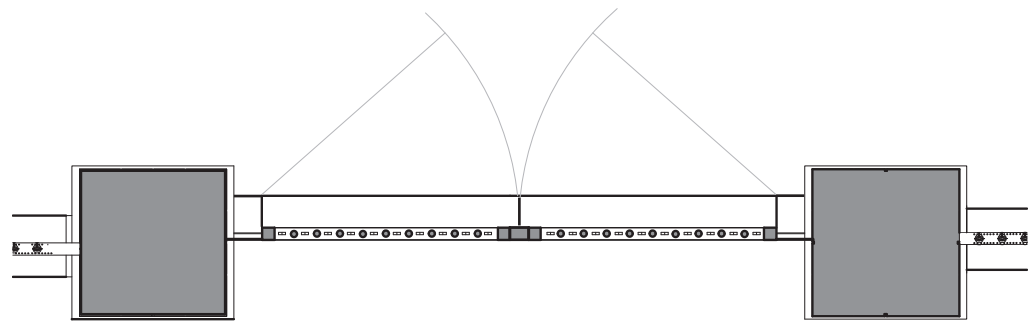


**P-** Pedestrian Gate    **V-** Vehicle Gate

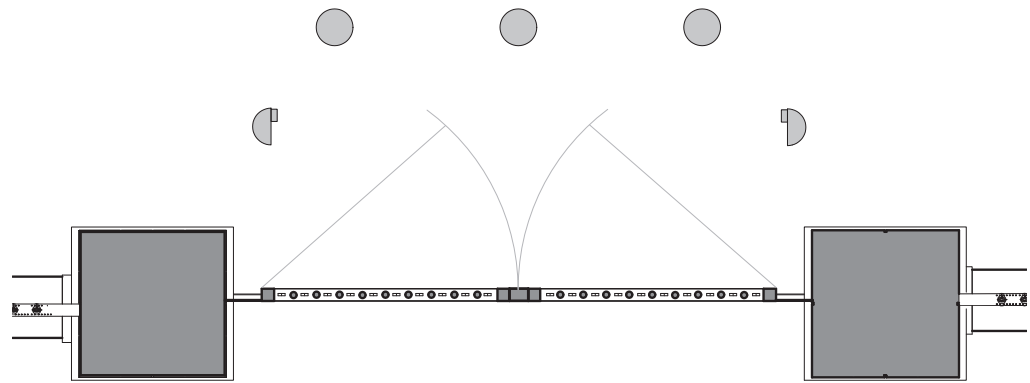


White House Complex Fence Phase 1  
December 1, 2016

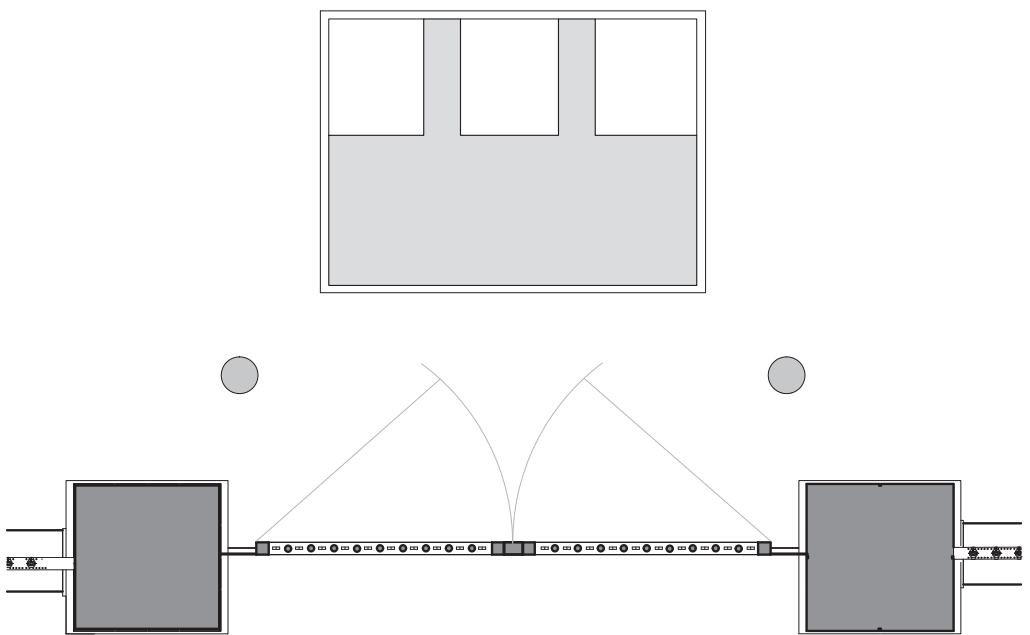
# Gate Locations



Option 1: Crash Rated Gate



Option 2: Non-Crash Rated Gate with Crash Rated Retractable Bollards



Option 3: Non-Crash Rated Gate with Crash Rated Wedge Barrier



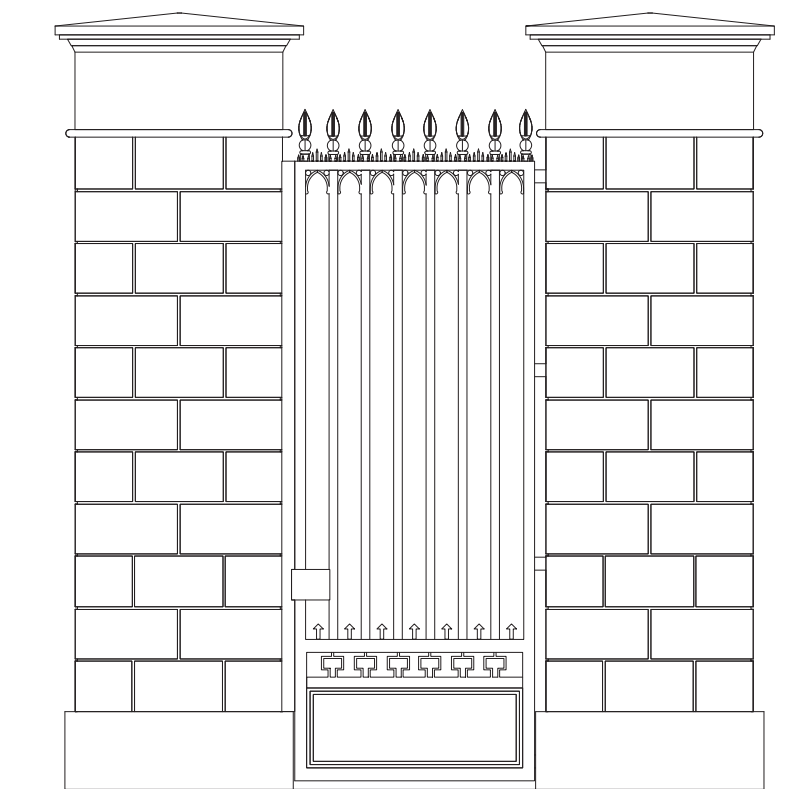
**A- Retractable Bollards**



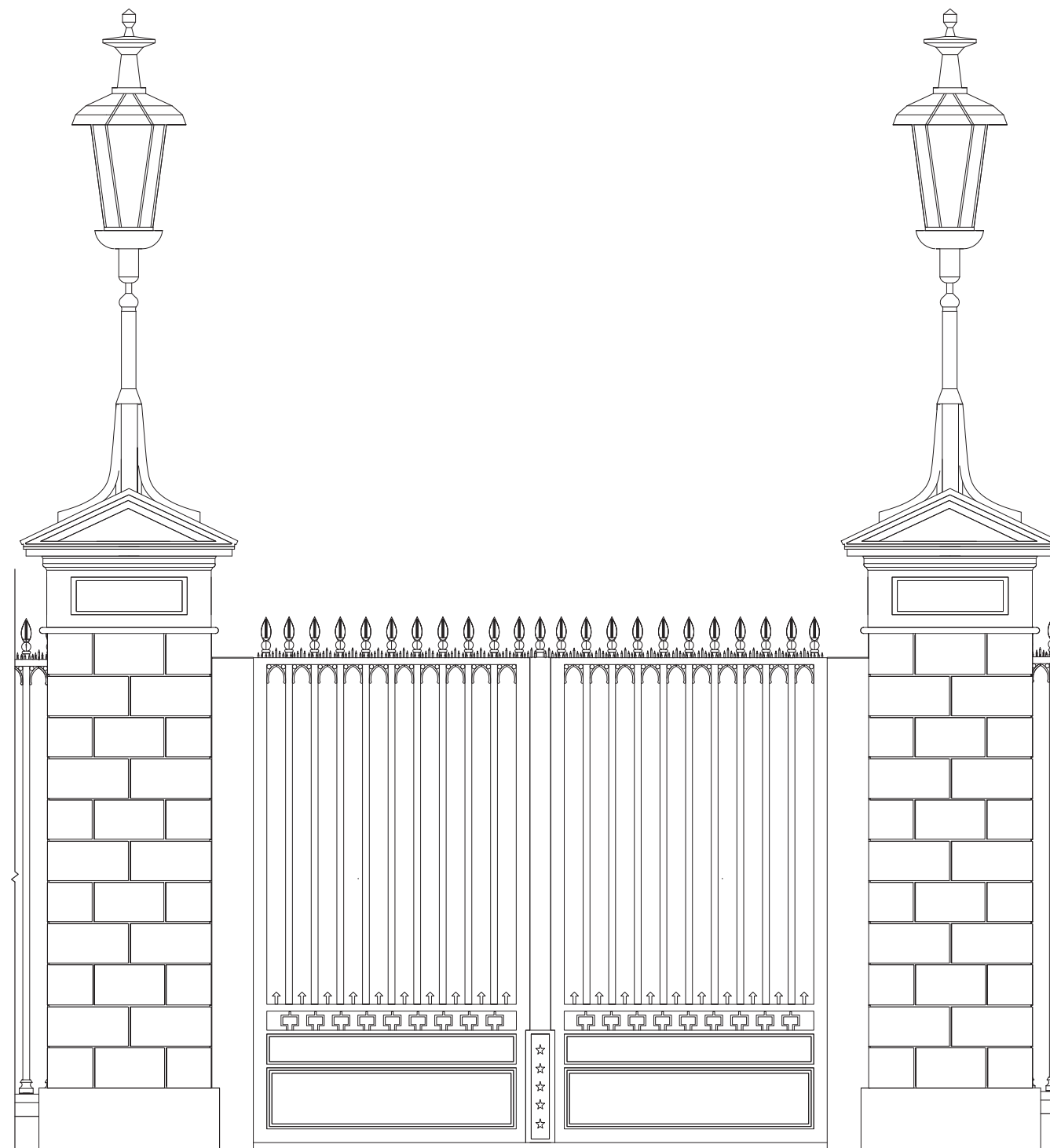
**B- Wedge Barrier**

(Note: Proposed Barrier will be painted a darker color with no STOP sign)





Pedestrian Gate Concept  
 Pennsylvania Ave.

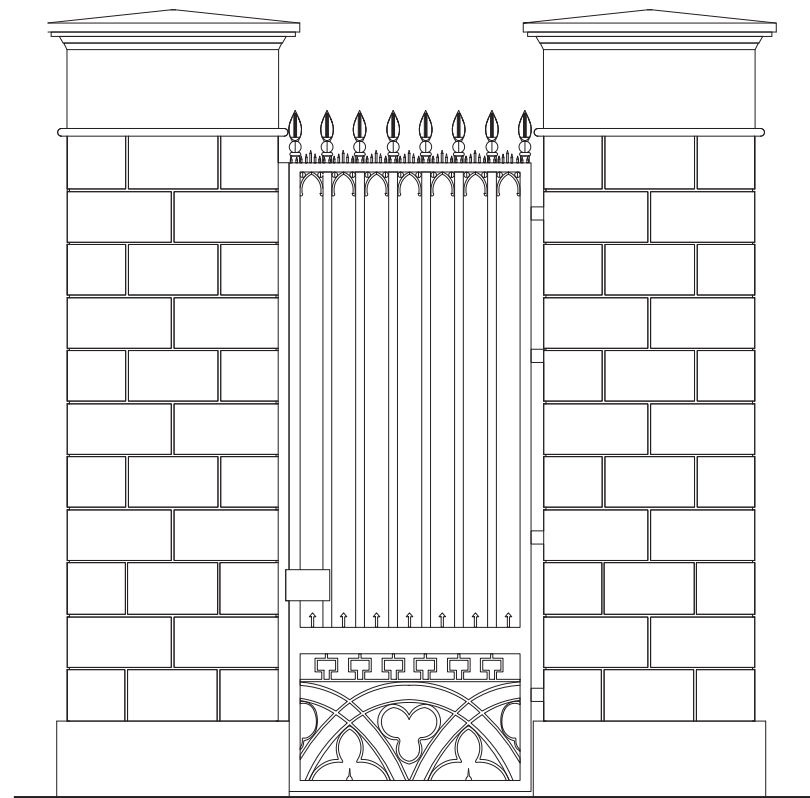


Vehicle Gate Concept: 13' high x 16' wide  
 Pennsylvania Ave.

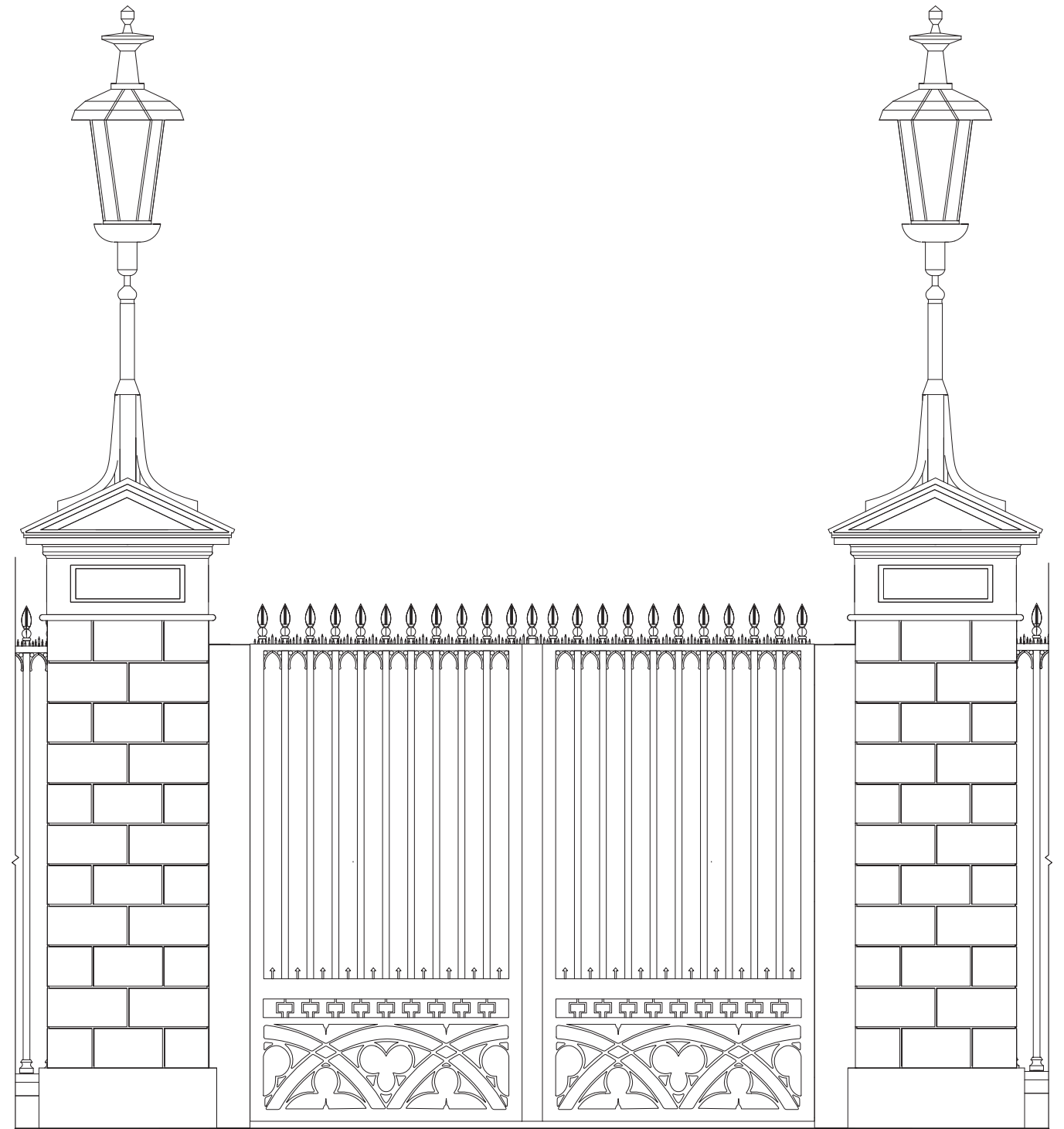


White House Complex Fence Phase 1  
 December 1, 2016

Option 1- Crash Rated Gate  
 Pennsylvania Ave



Pedestrian Gate Concept  
 Pennsylvania Ave.

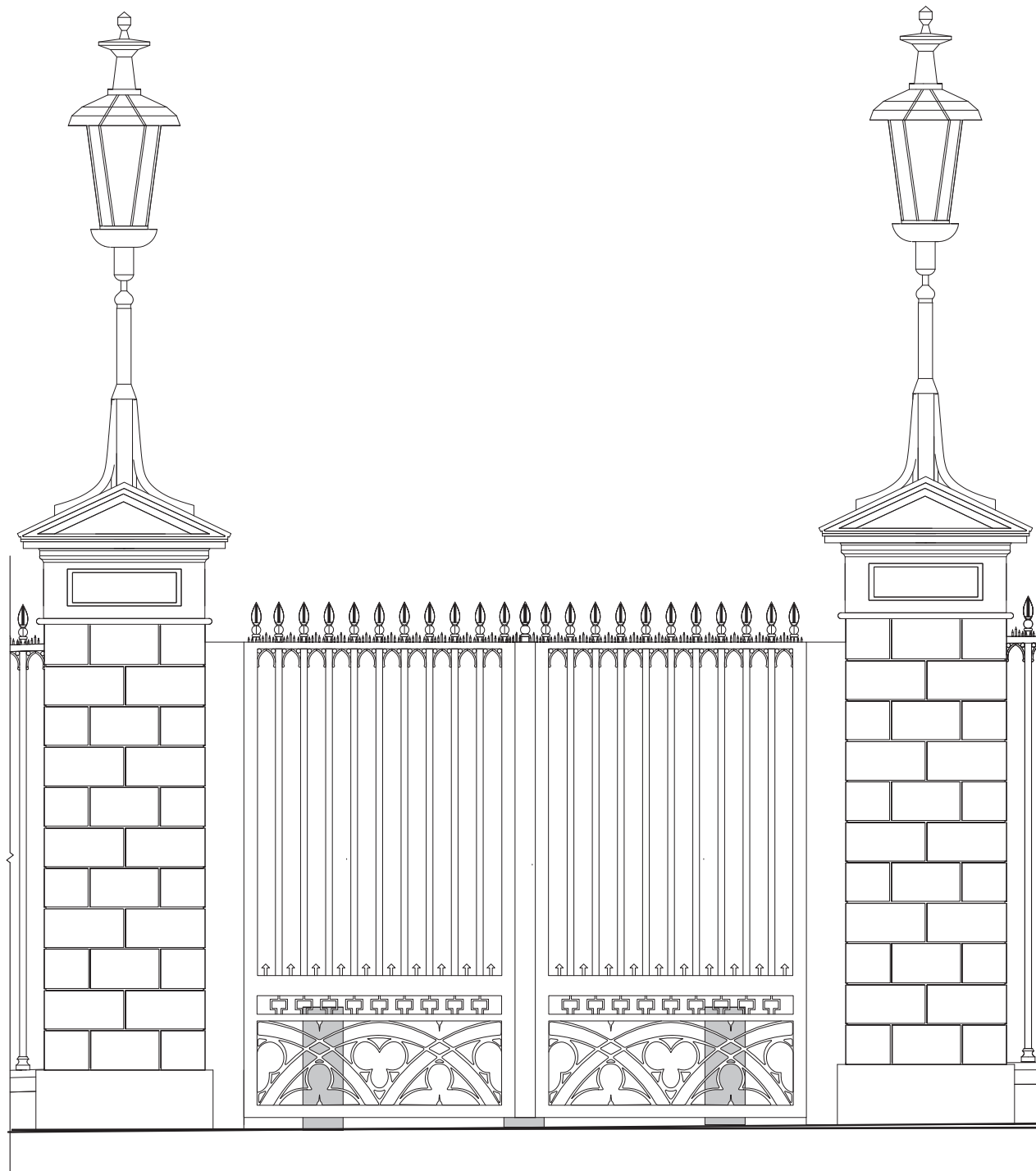


Vehicle Gate Concept: 13' high x 16' wide  
 Pennsylvania Ave.

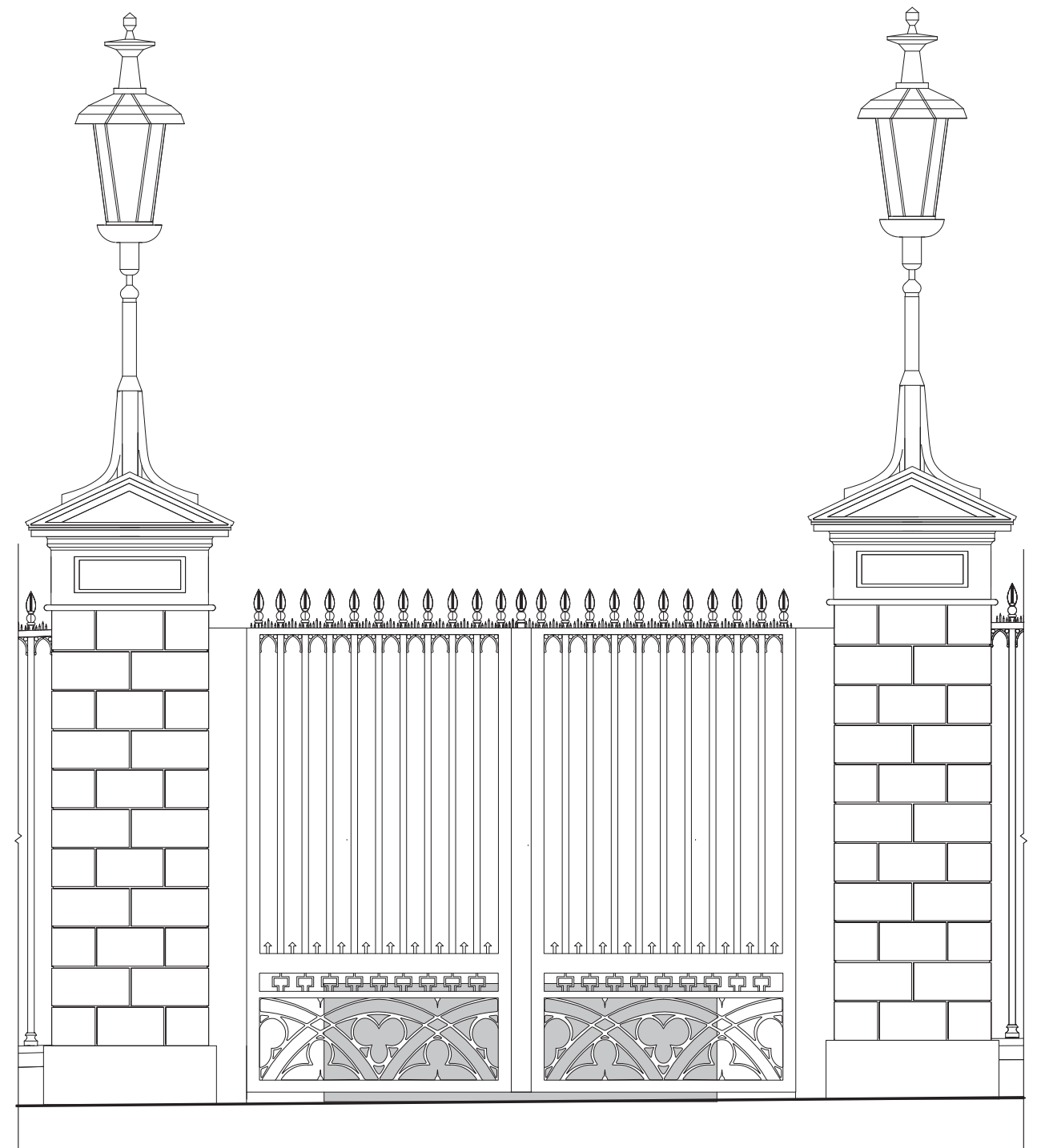


White House Complex Fence Phase 1  
 December 1, 2016

Option 2- Non-Crash Rated Gate  
 with Separate Crash Barrier  
 Pennsylvania Ave



Vehicle Gate Option 2A: Crash Rated Bollards  
 Pennsylvania Ave.

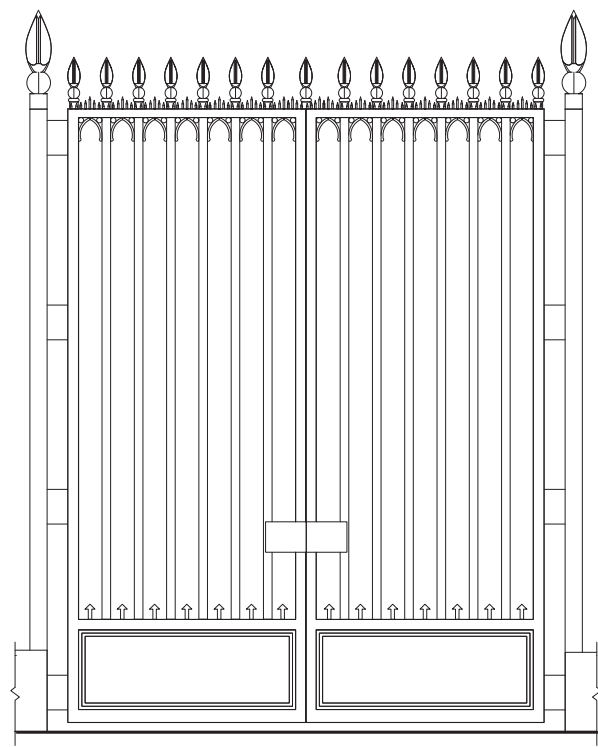
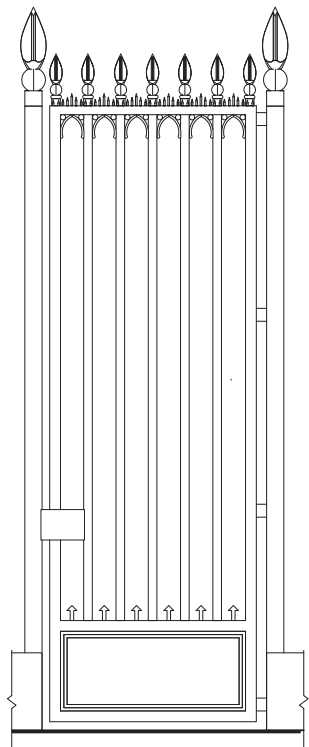


Vehicle Gate Option 2B: Crash Rated Wedge  
 Pennsylvania Ave.

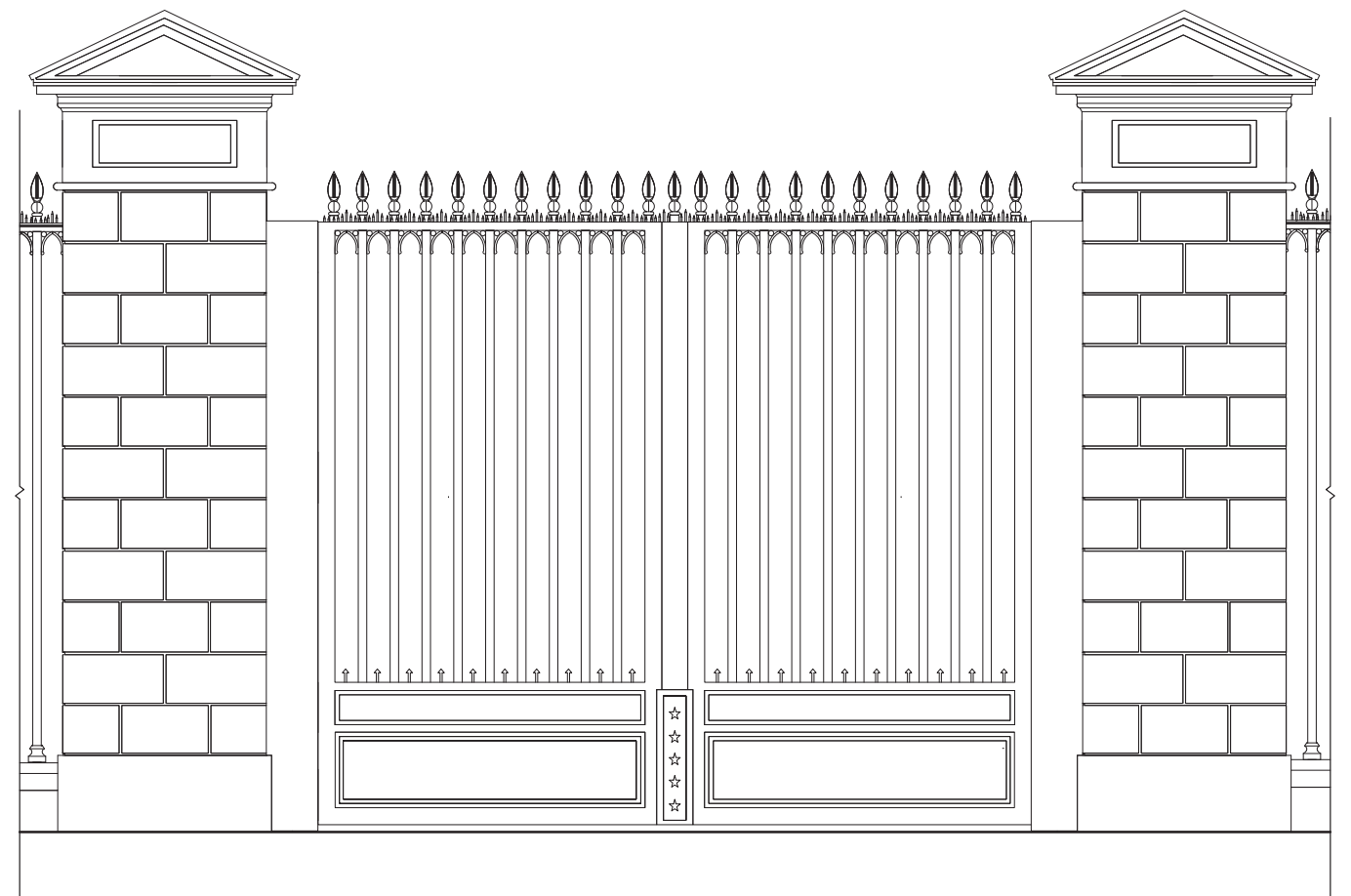


White House Complex Fence Phase 1  
 December 1, 2016

Option 2- Non-Crash Rated Gate  
 with Separate Crash Barrier  
 Pennsylvania Ave



Pedestrian Gates Concept  
East & West Executive

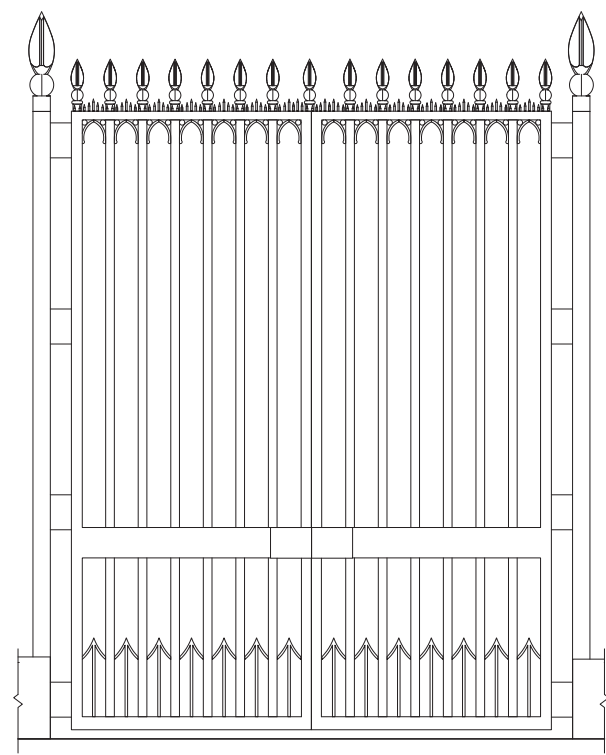
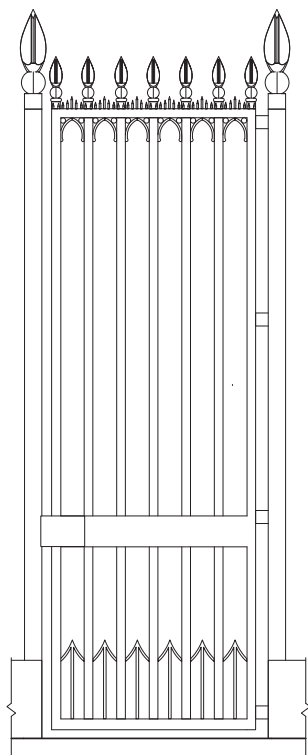


Vehicle Gate Concept: 13' high x 16' wide  
East & West Executive

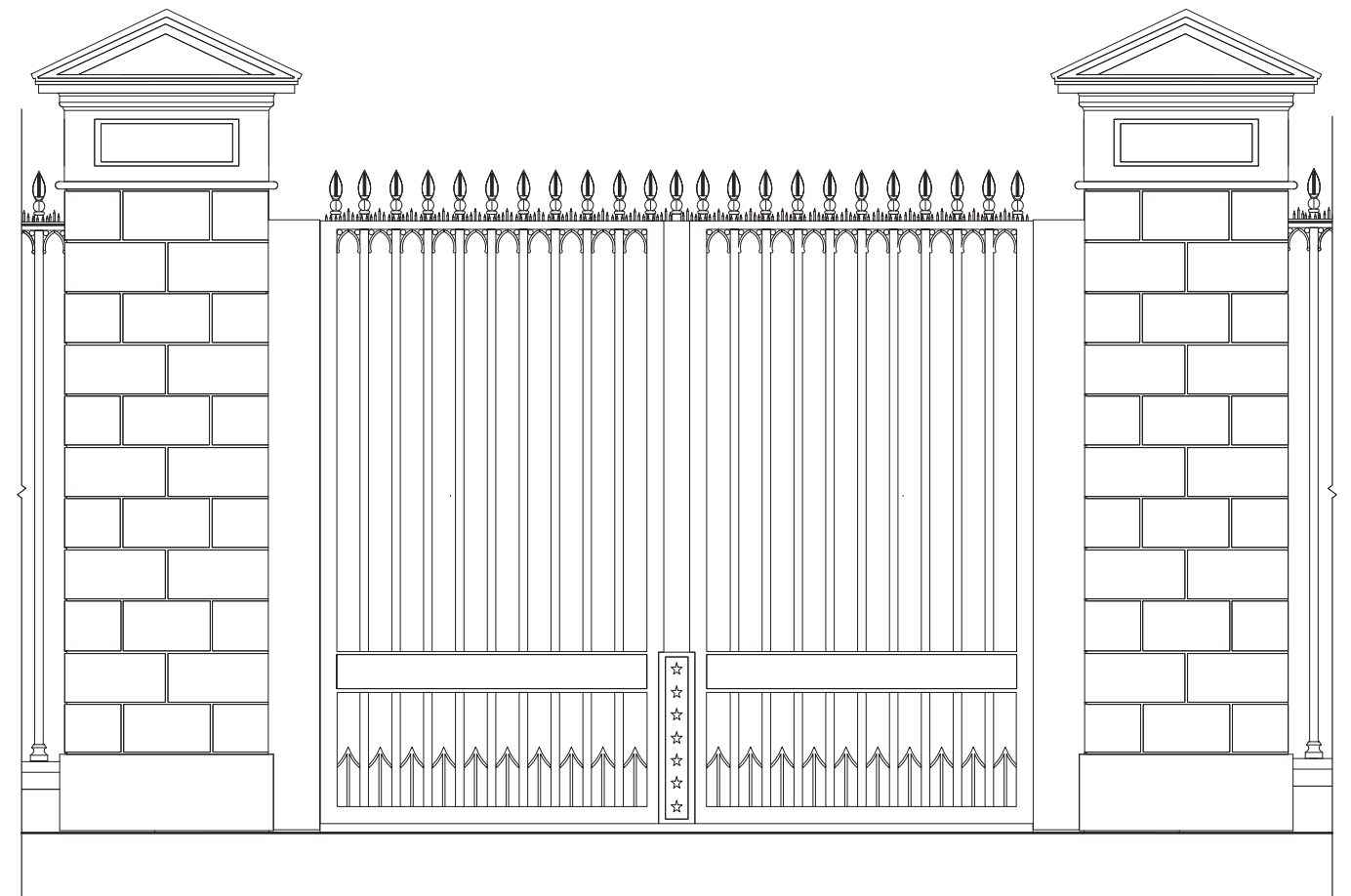


White House Complex Fence Phase 1  
December 1, 2016

Option 1- Crash Rated Gate  
East & West Executive

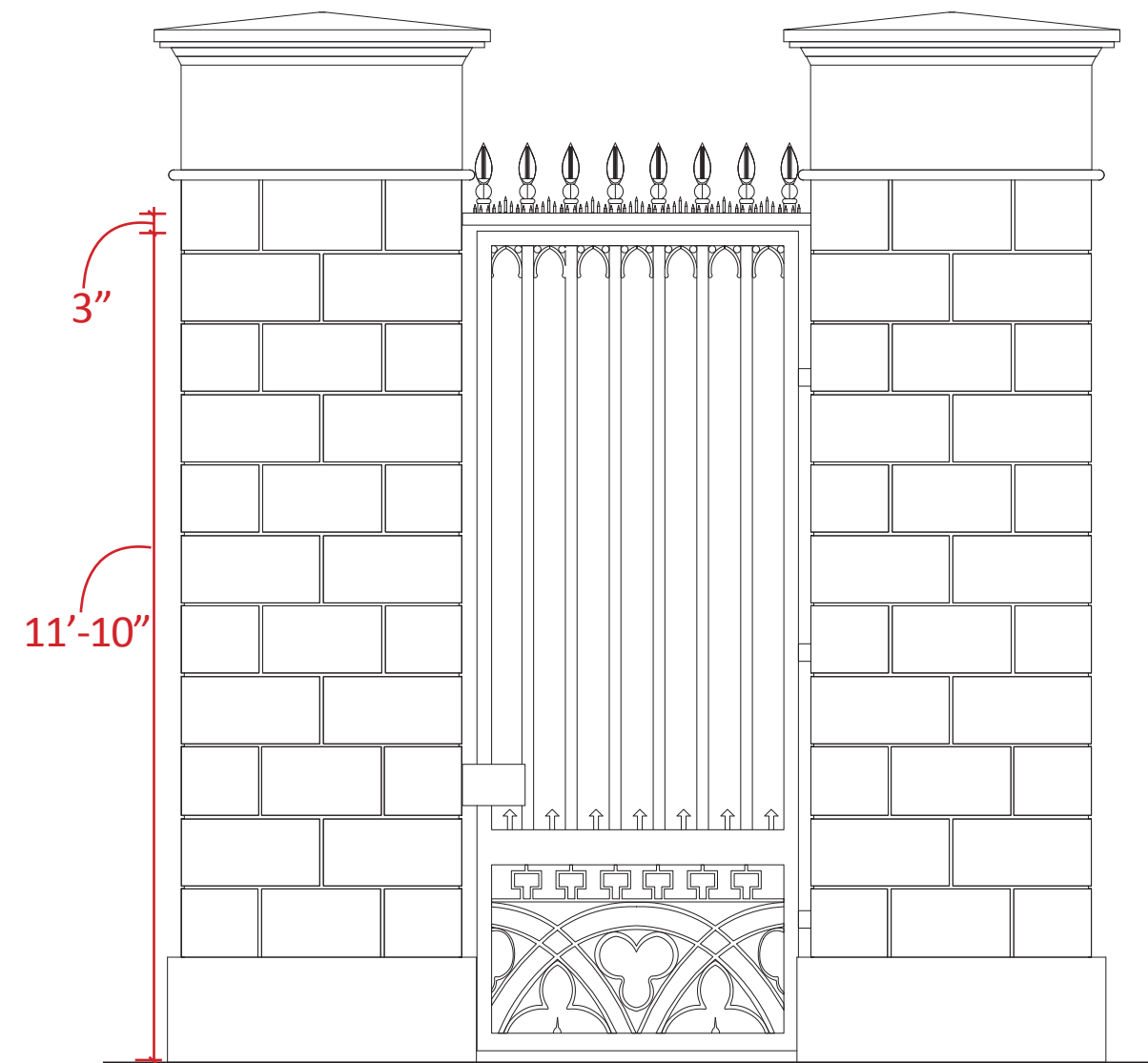


Pedestrian Gates Concept  
East & West Executive

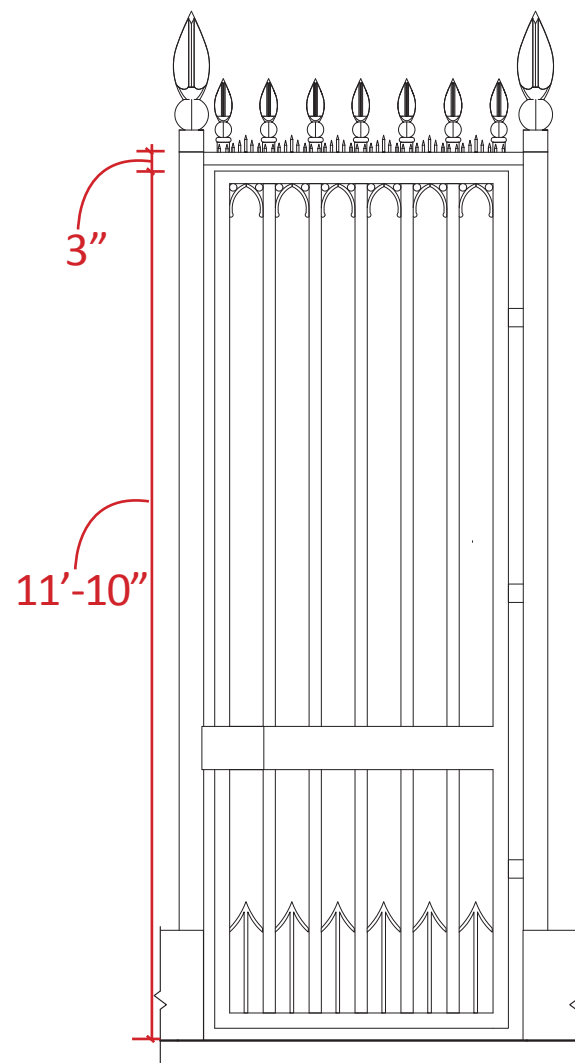


Vehicle Gate Concept: 13' high x 16' wide  
East & West Executive

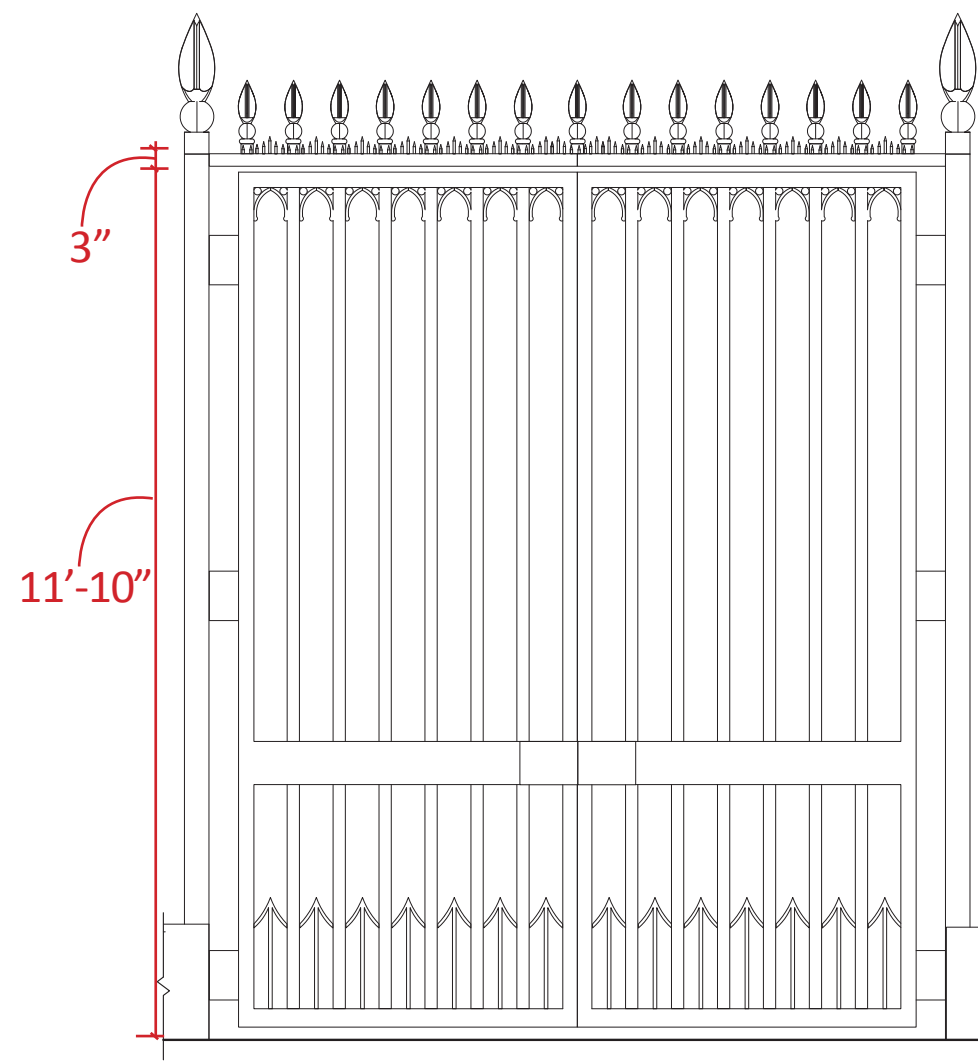




Pedestrian Gates Concept  
Pennsylvania Ave



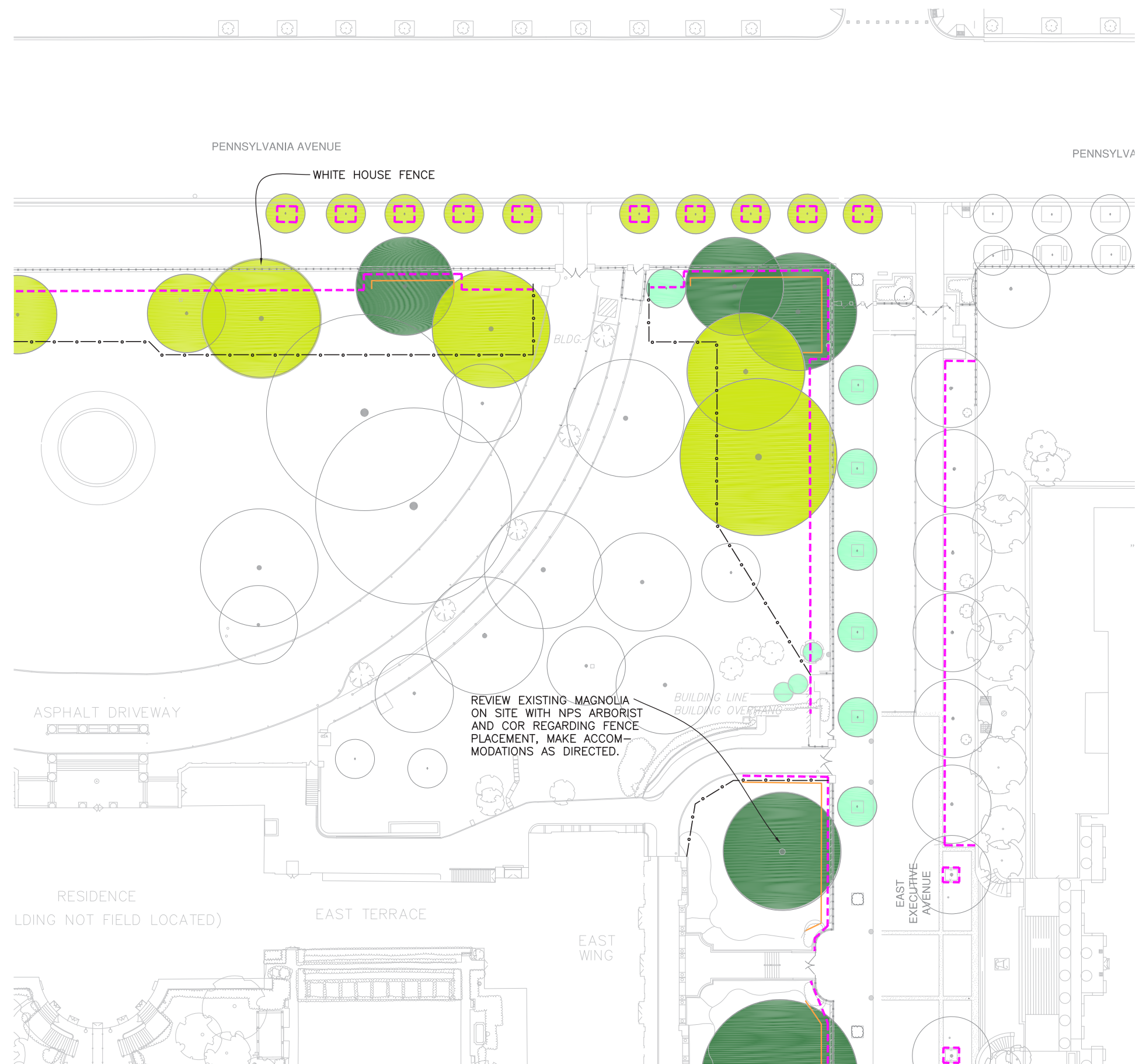
Pedestrian Gates Concept  
East & West Executive









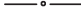

Pedestrian Gates Concept  
East & West Executive

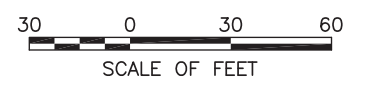
- The fixed top bar on the gate allows for easier installation of hinges
- The hinges will be a pivot hinge system with a ground closer as preferred by NPS maintenance staff.





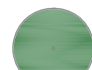







**SYMBOL KEY**

-  TREE 8" CAL. & OVER, WITH HIGH POTENTIAL OF CONSTRUCTION IMPACT (MINIMIZE IMPACT, INSPECT ROOT SYSTEMS BY AIR RAKE, TAKE APPROPRIATE MEASURES)
-  TREE 8" CAL. & OVER, WITH LOW POTENTIAL OF CONSTRUCTION IMPACT (MINIMIZE IMPACT, HAND DIG AND ROOT PRUNE AS APPROPRIATE)
-  TREE 4"-7" CAL. WITH HIGH POTENTIAL OF CONSTRUCTION IMPACT (TREES MAY BE PROTECTED OR REMOVED AND REPLACED IN-KIND)
-  HOLLY/BROADLEAF EVERGREEN (PROTECT EVERGREENS BY ROOT PRUNING AND SECURING BRANCHES FROM PHYSICAL DAMAGE OR REMOVE AND REPLACE IN-KIND)
-  TREES UNAFFECTED BY CONSTRUCTION OR CONSTRUCTION OPERATIONS
-  CHAINLINK TREE PROTECTION FENCE
-  WHITE PANEL FENCING BARRIER
-  ROOT PRUNING/AIR RAKING





**SYMBOL KEY**

-  TREE 8" CAL. & OVER, WITH HIGH POTENTIAL OF CONSTRUCTION IMPACT (MINIMIZE IMPACT, INSPECT ROOT SYSTEMS BY AIR RAKE, TAKE APPROPRIATE MEASURES)
-  TREE 8" CAL. & OVER, WITH LOW POTENTIAL OF CONSTRUCTION IMPACT (MINIMIZE IMPACT, HAND DIG AND ROOT PRUNE AS APPROPRIATE)
-  TREE 4"-7" CAL. WITH HIGH POTENTIAL OF CONSTRUCTION IMPACT (TREES MAY BE PROTECTED OR REMOVED AND REPLACED IN-KIND)
-  HOLLY/BROADLEAF EVERGREEN (PROTECT EVERGREENS BY ROOT PRUNING AND SECURING BRANCHES FROM PHYSICAL DAMAGE OR REMOVE AND REPLACE IN-KIND)
-  TREES UNAFFECTED BY CONSTRUCTION OR CONSTRUCTION OPERATIONS
-  CHAINLINK TREE PROTECTION FENCE
-  WHITE PANEL FENCING BARRIER
-  ROOT PRUNING/AIR RAKING



White House Complex Fence Phase 1  
December 1, 2016

# Tree Impact