

# Gold Star Mothers National Monument

---

Submitted by the National Park Service

Site Selection Review

**Commission meeting date:** December 3, 2015

**NCPC review authority:** Commemorative Works Act (40 U.S.C. 8905) & Public Law 112-239

**Applicant request:** Approval of comments on site selection

**Delegated / consent / open / executive session:** Open

**NCPC Review Officer:** M. Flis

**NCPC File number:** 7731

### **Project summary:**

Congress authorized establishment of the Gold Star Mothers commemorative work in Public Law 112-239 on National Park Service land (Areas I or II). The Commemorative Works Act sets forth approval requirements related to the design and placement of the work. In accordance with the CWA, NCPC approves site and design for new commemorative works.

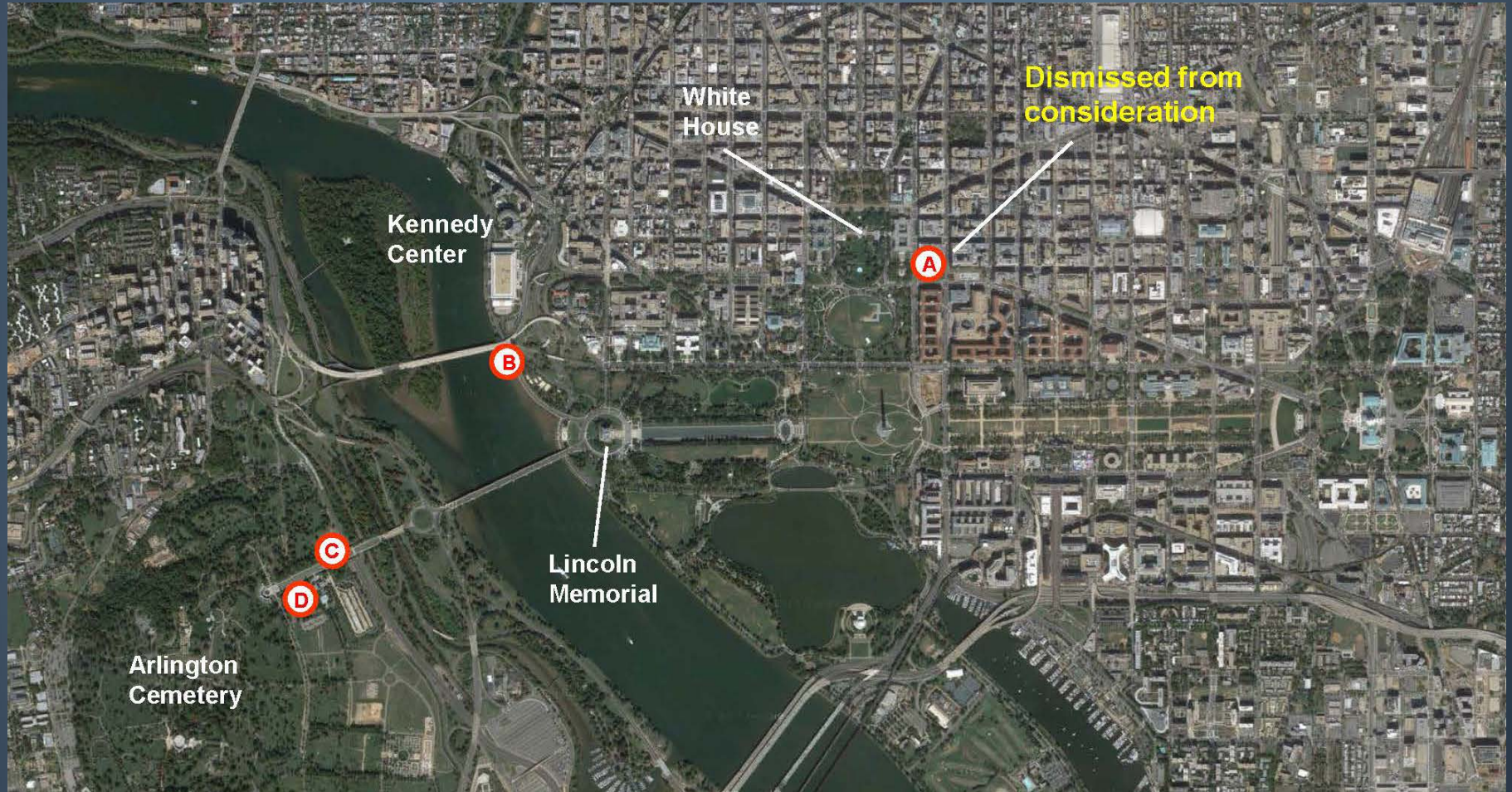
The National Park Service (Department of the Interior) on behalf of the Gold Star Mothers National Monument Foundation, is submitting a site analysis including four potential sites to the National Capital Planning Commission for review and comment. At their December 12, 2013 meeting, the National Capital Memorial Advisory Commission provided comments on the site study. On November 19, 2015 the U.S. Commission of Fine Arts will provide comments on the site study. These comments will be included in the record.

The four submitted sites include:

1. Pershing Park (now dismissed)
2. Belvedere near the Theodore Roosevelt Memorial Bridge
3. Niche along Memorial Avenue
4. Adjacent to Arlington National Cemetery Visitor Center

- Monument would honor those who died in defense of the United States. Term originated during World War I: A mother whose child had died in honorable military service while serving during the time of war was permitted to hang in their window a service flag with a gold star emblazoned on it.
- Construction of the monument will be sponsored by the Gold Star Mothers National Monument Foundation and maintained by the NPS

1. In the District of Columbia or its environs, but not in the National Mall Reserve
2. In a context meaningful to Gold Star Mothers and Gold Star Families
3. Out of the overwhelming or distracting influence of other commemorative works.
4. Without adverse impact on other commemorative work(s)
5. Without adverse impact on historic resources
6. Convenient to existing tourist destinations
7. Able to accommodate groups of visitors
8. Able to provide a contemplative setting
9. Accessible by public transportation
10. Accessible to handicapped visitors and the elderly
11. Able to provide shade



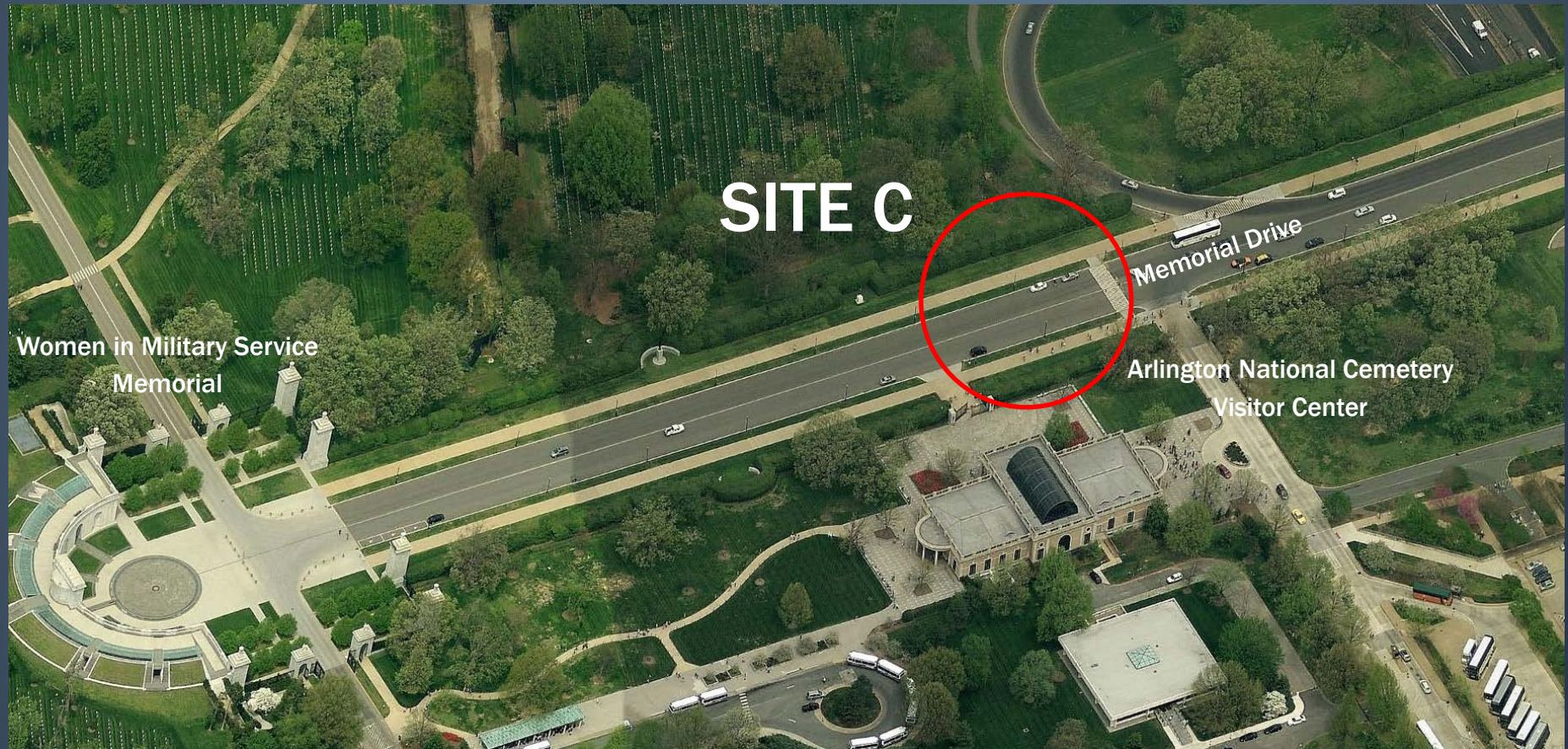


- Site A dismissed due to Congressional action designating the site for the World War I Memorial

# Site B: Belvedere Near Theodore Roosevelt Bridge

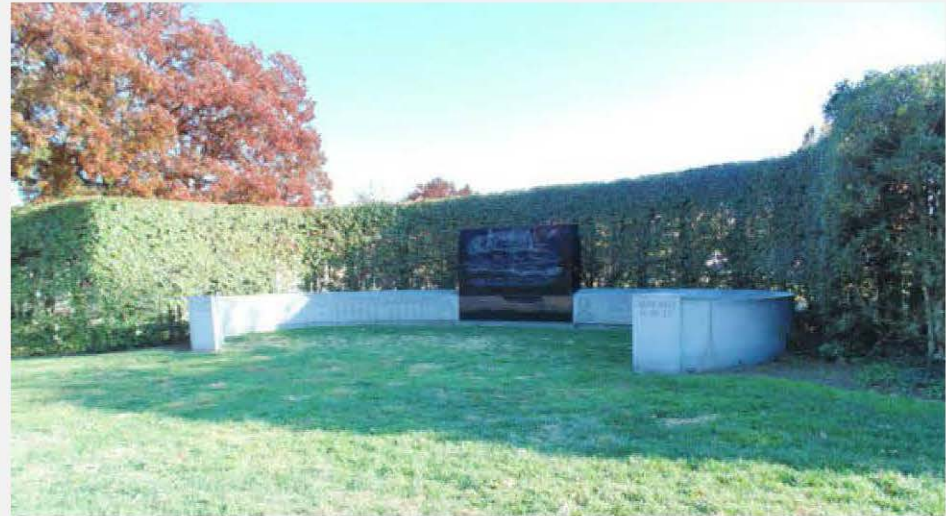




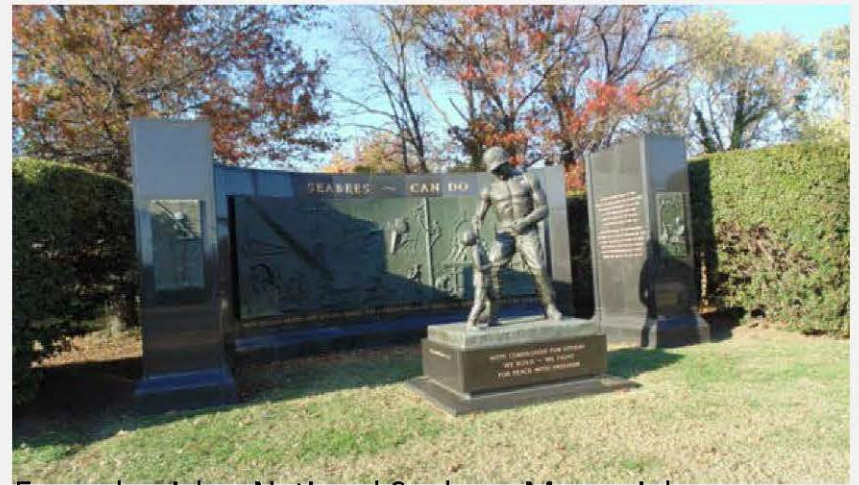




West view down Memorial Drive



Example niche; Armored Forces Memorial



Example niche; National Seabees Memorial

# Site D: Adjacent to ANC Visitor Center





B	C	D	The location should be:
1	1	1	In the District of Columbia or its environs, but not in the National Mall Reserve;
☆ 2	2	2	In a context meaningful to Gold Star Mothers and Gold Star Families;
3	3	3	Out of the overwhelming or distracting influence of other commemorative work(s);
4	4	☆ 4	Without adverse impact on other commemorative work(s);
5	5	5	Without adverse impact on historic resources;
6	6	6	Convenient to existing tourist destinations;
7	7	7	Able to accommodate groups of visitors;
8	8	8	Able to provide a contemplative setting;
9	9	9	Accessible by public transportation;
10	10	10	Accessible to disabled visitors and the elderly; and,
11	11	11	Able to provide shade.

☆ *Compliance dependent on design*