

Armed Forces Retirement Home New Fountain Installation

3700 North Capitol Street, NW, Washington, DC

Approval of Preliminary and Final Site Development Plans

Armed Forces Retirement Home

Project Summary

Commission Meeting Date: June 4, 2026

NCPC Review Authority: 40 U.S.C. § 8722(b)(1) and (d)

Applicant Request: Approval of Preliminary and Final Site Development Plans

Session: Executive Director

NCPC Review Officer: Lee Webb

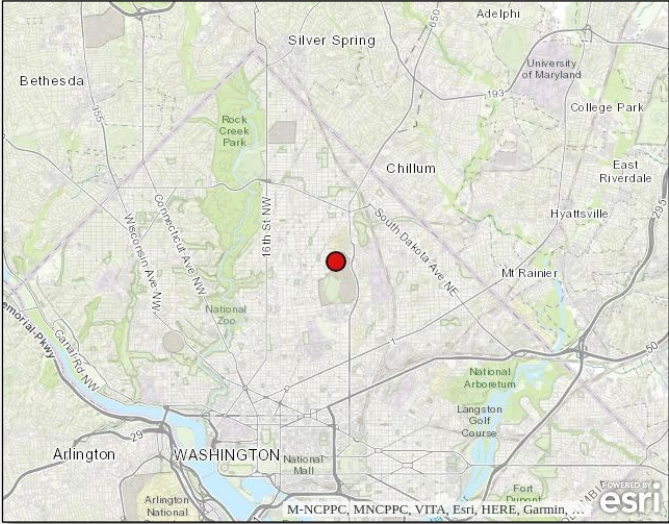
NCPC File Number: 8783

Project Summary:

The Armed Forces Retirement Home (AFRH) has submitted preliminary and final site development plans for the installation of a prefabricated, new stone fountain on the grounds west of the Bandstand (Building 11) near the Eagle Gate entrance, at the AFRH campus at 3700 North Capital Street, NW in Washington, D.C. The three-tiered granite fountain is 78-inches in height with a circular base that is 108- inches in diameter. The new stone fountain will be placed in the circular planting area formed by a walkway that leads from the sidewalk to the Bandstand. The walkway is made of modern, cast stone pavers and was originally laid sometime in the 1980s. Sections of the walkway are uneven, and some individual pavers are misplaced. Areas of the walkway will be re-laid as necessary using the existing pavers and maintaining its existing configuration and alignment. The space is already equipped with water (irrigation) and electrical (site lighting). Minimal ground disturbance (less than 6 inches) may be required to connect the fountain to the existing electrical and water. The purpose of the project is to improve the existing landscape consistent with the America 250 initiative.

The District of Columbia State Historic Preservation Office (DC SHPO) concurred with a finding of No Adverse Effects to historic properties, based on the project scope.

Site Location



Location Map

Site Plan

II. SITE PLANS AND PHOTOGRAPHS



Image 1: Site Plan showing campus context

Rendering of mock-up of proposed fountain



Image 2: Mock-up of proposed fountain, approximately to scale

Images of Location of Proposed Fountain



Image 3: View of project site looking east from the sidewalk toward the Bandstand



Image 4: View of project site looking southeast from Eagle Gate



Images of Location of Proposed Fountain



Image 5: Image 4: View of project site looking southeast from the Administration Building (Building 10)



Location

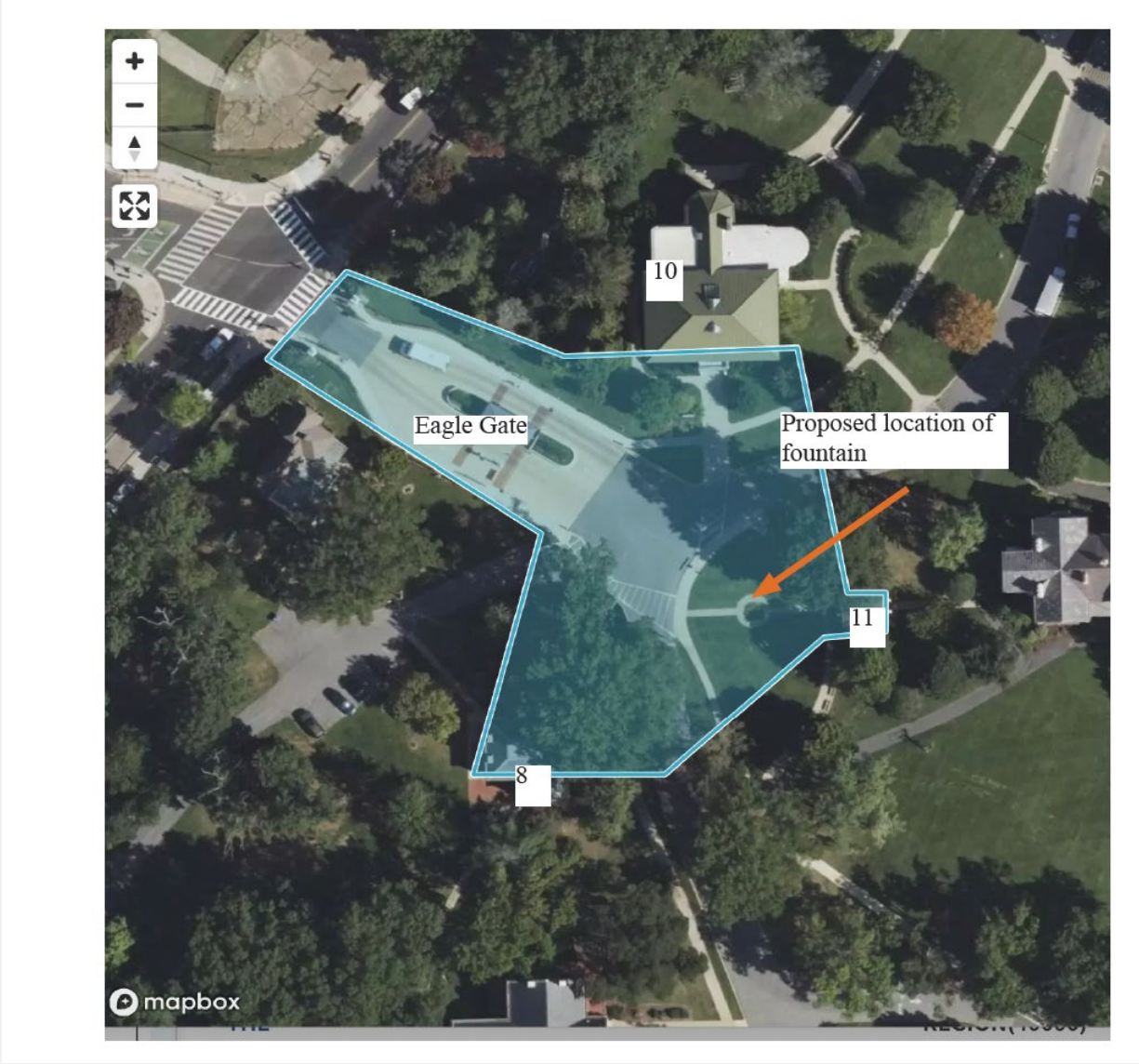


Image of Fountain

