

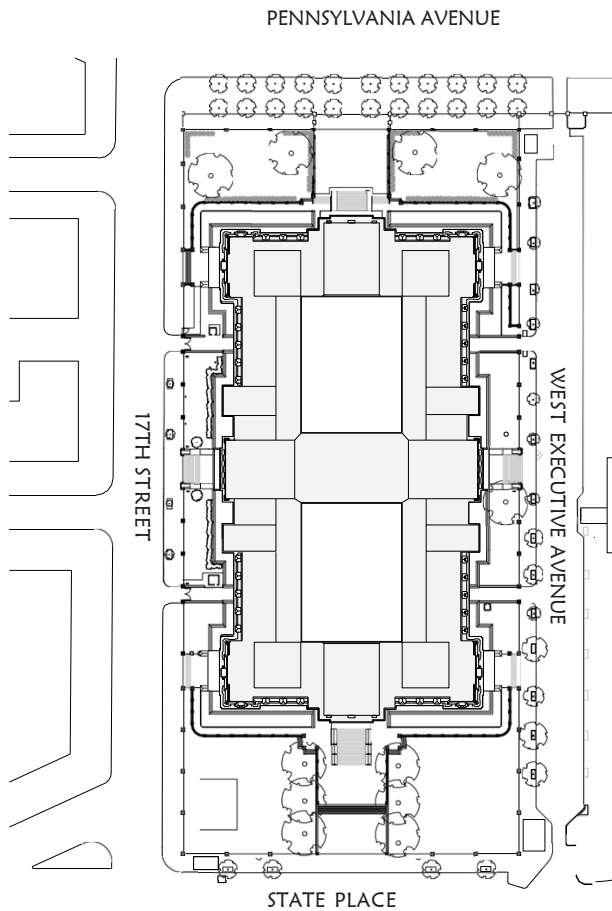


EXECUTIVE OFFICE OF THE PRESIDENT
OFFICE OF ADMINISTRATION
WASHINGTON, D.C. 20503

Exterior Improvements to the Eisenhower Executive Office Building

EXECUTIVE OFFICE OF THE PRESIDENT
OFFICE OF ADMINISTRATION

EXISTING STRUCTURE & CONDITIONS



THE EEOB HAS BEEN LARGELY NEGLECTED SINCE ITS CONSTRUCTION IN THE LATE 1800'S. MINOR EXTERIOR FAÇADE MAINTENANCE WAS CONDUCTED IN THE 1960'S AND THEN AGAIN IN THE EARLY 2000'S. THERE HAVE BEEN NO OTHER NOTABLE EXTERIOR REPAIRS OR RESTORATION COMPLETED ON THE EEOB.

THE COLOR, DESIGN, AND MASSING OF THE EXISTING STRUCTURE DOES NOT ALIGN VISUALLY WITH THE SURROUNDING ARCHITECTURE AND LACKS ANY SYMBOLIC COHESION WITH THE WHITE HOUSE.

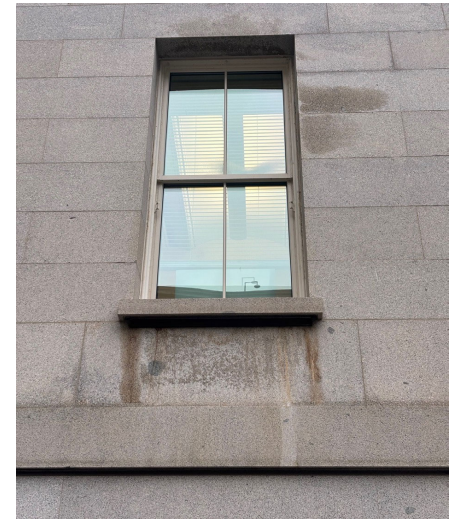
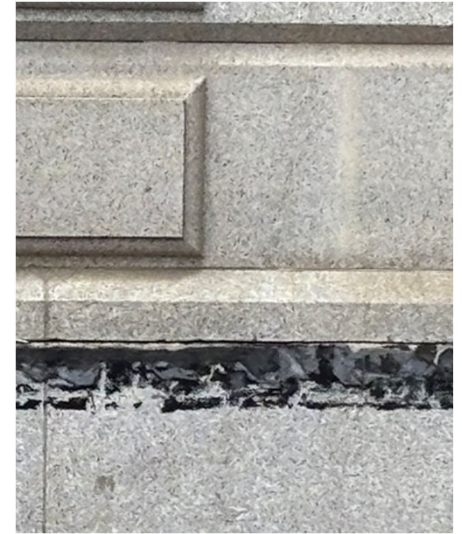


EXISTING STRUCTURE & CONDITIONS, CONT'D

CONDITIONS OF THE EEOB INCLUDE GRIME, SOOT AND STAINING WHICH HAS IMPACTED THE NATURAL STONE AND DULLED THE GRANITE.

THE EEOB ALSO HAS ABRASIONS, CRACKS AND DEEP LINES FROM YEARS OF POOR OR NON-EXISTENT EXTERIOR MAINTENANCE, AND GENERAL DISREGARD.

THE BENEFIT TO PAINTING THE STONE IS THAT IT IS REPEATABLE. THE INABILITY TO BRING THE STONE FACADE BACK TO A BASELINE COLOR HAS PLAGUED THE MAINTENANCE OF THE EEOB IN THE PAST, AND WILL CONTINUE TO PLAGUE IT IF NOT ADDRESSED.



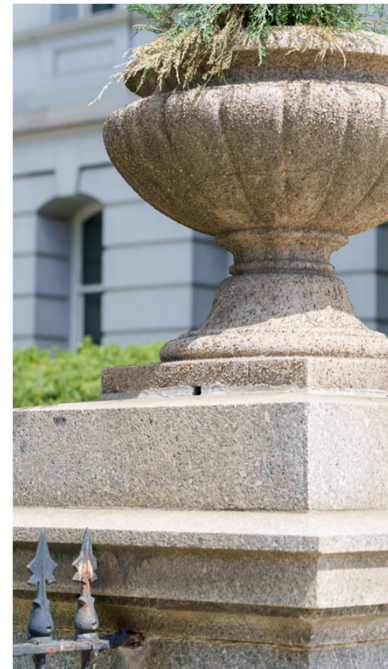
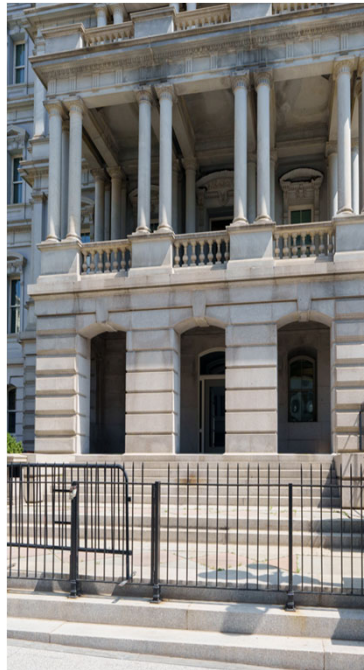
EXISTING STRUCTURE & CONDITIONS, CONT'D

WHEN STONE MASONS HAVE ASSESSED THE ABILITY TO CLEAN THE FAÇADE, THEY OFTEN STATE THERE IS NO GUARANTEE HOW MUCH BROWN AND STAINING CAN BE REMOVED FROM THE STONE.

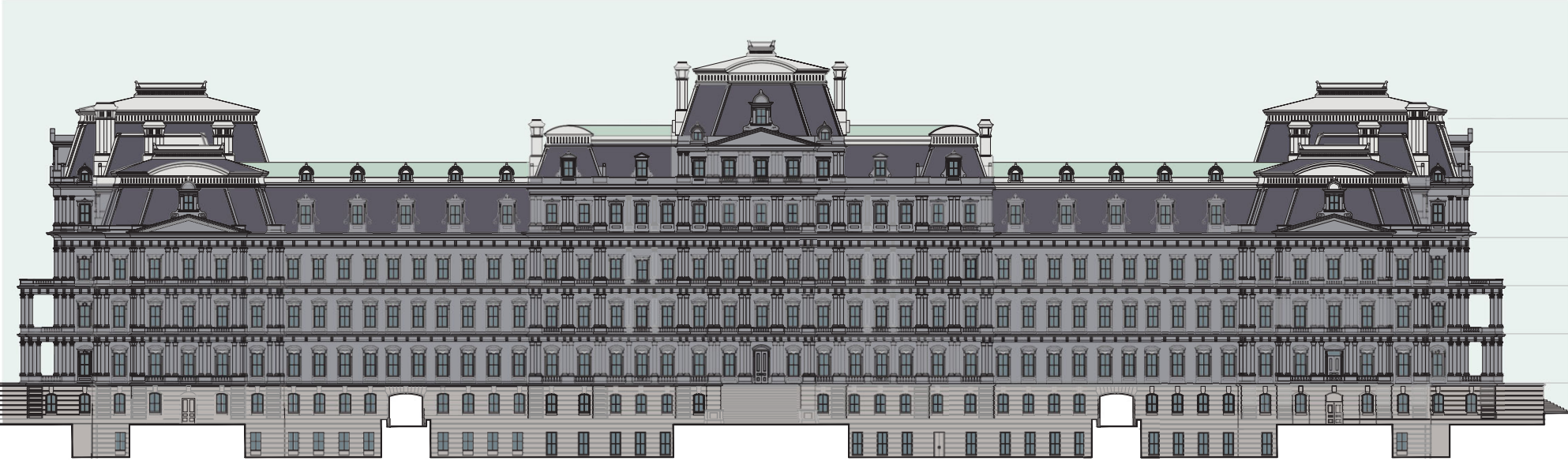
THEY ALSO STATE IT IS UNCLEAR HOW MANY PASSES, CLEANER, AND WATER WILL BE REQUIRED.

THIS INABILITY TO DETERMINE, BOTH THE FINANCIAL COMMITMENT AND ULTIMATE QUALITY OF RESULTING WORK, WILL LEAD TO FURTHER NEGLECT OF THE BUILDING'S FAÇADE.

ADDITIONALLY, REPAIRING CRACKED AND BROKEN STONE IS ALMOST ALWAYS INFEASIBLE SINCE THE STONES ARE INTEGRATED TOGETHER IN THE MASONRY WALL AND SUCH REPAIRS INEVITABLY DAMAGE SURROUNDING STONES AND METALS.

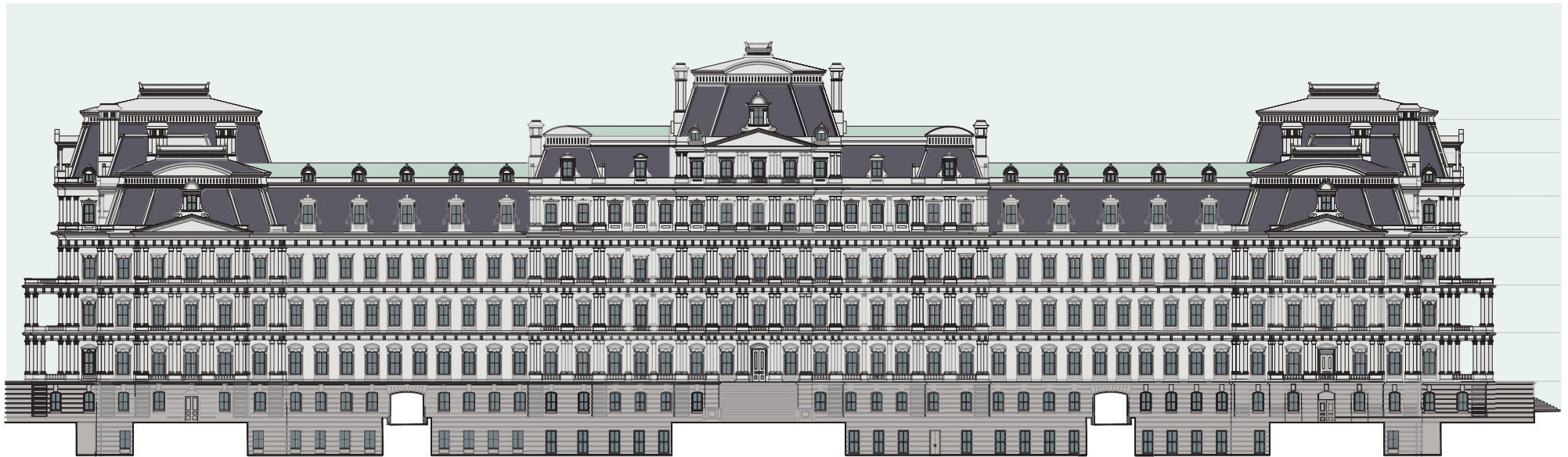


EXISTING STRUCTURE RENDERING



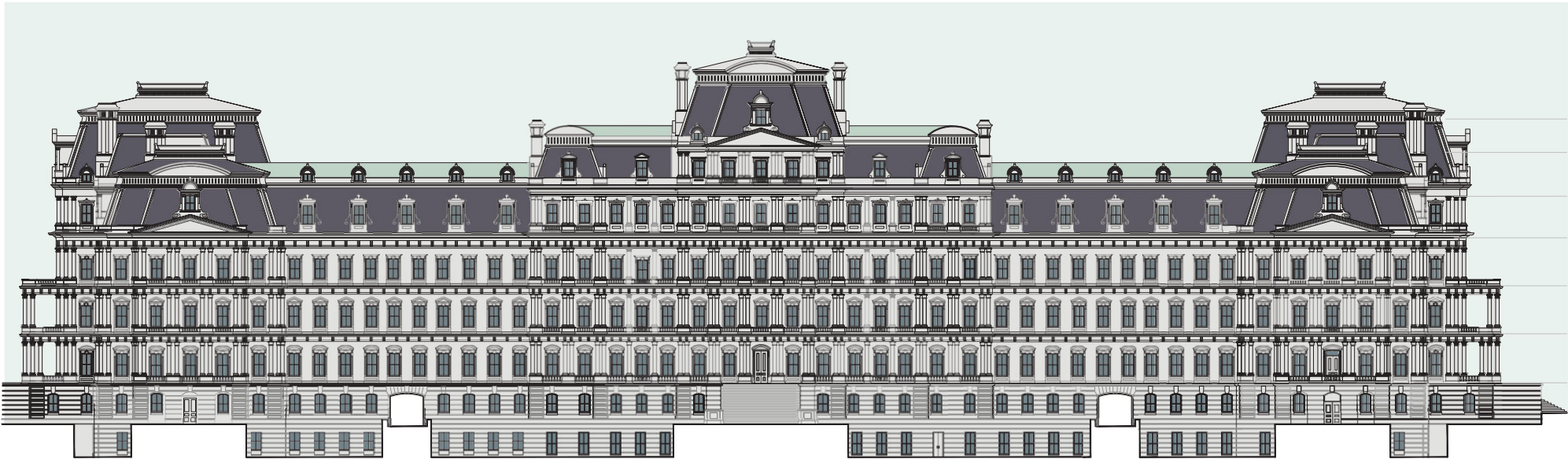
PROPOSED PAINTING OPTION 1

THIS PAINT RENDERING PORTRAYS THE SUPERSTRUCTURE IN WHITE WHILE MAINTAINING THE GRANITE FAÇADE ON THE EXPOSED BASEMENT AND SUBBASEMENT.



PROPOSED PAINTING OPTION 2

THIS PAINT RENDERING PORTRAYS THE SUPERSTRUCTURE AND BASEMENTS IN WHITE.



PROPOSED PAINTING

IN THIS IMAGE WE ILLUSTRATE THE EEOB AS IT WOULD LOOK UPON COMPLETION WITH THE SUPERSTRUCTURE PAINTED WHITE, AND MAINTAINING THE EXISTING GRANITE FOR THE BASEMENT AND SUBBASEMENT.



PROPOSED PAINTING CONT'D

IN THIS IMAGE WE ILLUSTRATE THE EEOB AS IT WOULD LOOK UPON COMPLETION WITH BOTH THE SUPERSTRUCTURE AND THE BASEMENTS ALSO PAINTED WHITE.



PROPOSED PAINTING CONT'D



PROPOSED PAINTING CONT'D



PROPOSED PAINTING WEST WING VIEW



PROPOSED PAINTING AERIAL VIEW



PROPOSED PAINTING FINAL

