

Fallen Journalists Memorial

300 Independence Avenue, SW, Washington, DC

Approval of Preliminary Site Development Plans

United States Department of the Interior

Project Summary

Commission Meeting Date: October 2, 2025

NCPC Review Authority: 40 U.S.C. § 8905

Applicant Request: Approval of Preliminary Site Development Plans

Session: Open

NCPC Review Officer: Melissa Lindsjo

NCPC File Number: 8449

Project Summary:

The Fallen Journalists Memorial will be located on parkland at a triangular site (Reservation 201) under the jurisdiction of the National Park Service (NPS) and managed by the National Mall and Memorial Parks. The site is situated at the intersection of Independence Avenue, Maryland Avenue, and 3rd Street, SW.

The memorial design features a hardscape stone plaza overlaid with a grove of trees and an array of cast glass beams that collectively form the primary memorial element. These beams create a circular Remembrance Hall at the heart of the site. Visitors would access the memorial through three entrances located at the northeast, southeast, and southwest corners of the site.

In 2020, Congress authorized the Foundation to establish a commemorative work in the District of Columbia and its environs to commemorate America's commitment to a free press by honoring journalists who sacrificed their lives in service to that cause (PL 116-253). In January 2023, the president authorized locating the memorial within Area I as outlined in the Commemorative Works Act (CWA)(Public Law 117-328).

Project Summary

In April 2023, the Foundation received site approval from the National Capital Planning Commission and the US Commission of Fine Arts to design the memorial on the site (Site O) located at Independence Avenue, Maryland Avenue, and 3rd Street SW.

In June 2023, the Foundation initiated a design team competition by inviting a broad and diverse group of 118 architects, designers, and artists from the U.S. and abroad to submit proposals.

In March 2024, the Foundation announced the selection of John Ronan Architects to design the memorial.

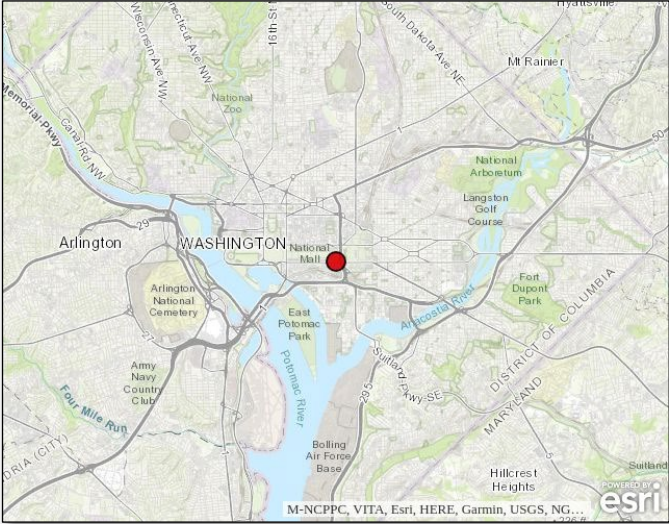
October 2024, NCPC approved comments supporting the design approach but finds the design must balance memorial purpose, materiality, and functionality, while considering the site context and visitor experience.

On January 16, 2025, CFA “reiterated their strong support for the memorial’s proposed design as beautiful and poetic, commenting that it will expand the design vocabulary used for commemorative public spaces.”

NPS initiated Section 106 consultation with the District of Columbia on October 8, 2024 and has determined that there would be no adverse effect on historic properties. The NPS has prepared an Environmental Assessment (EA) in compliance with the National Environmental Policy Act (NEPA).

In July 2025 there was a working group session to discuss some of the issues and the proposed changes presented address comments from the October 2024 meeting.

Site Location



Location Map

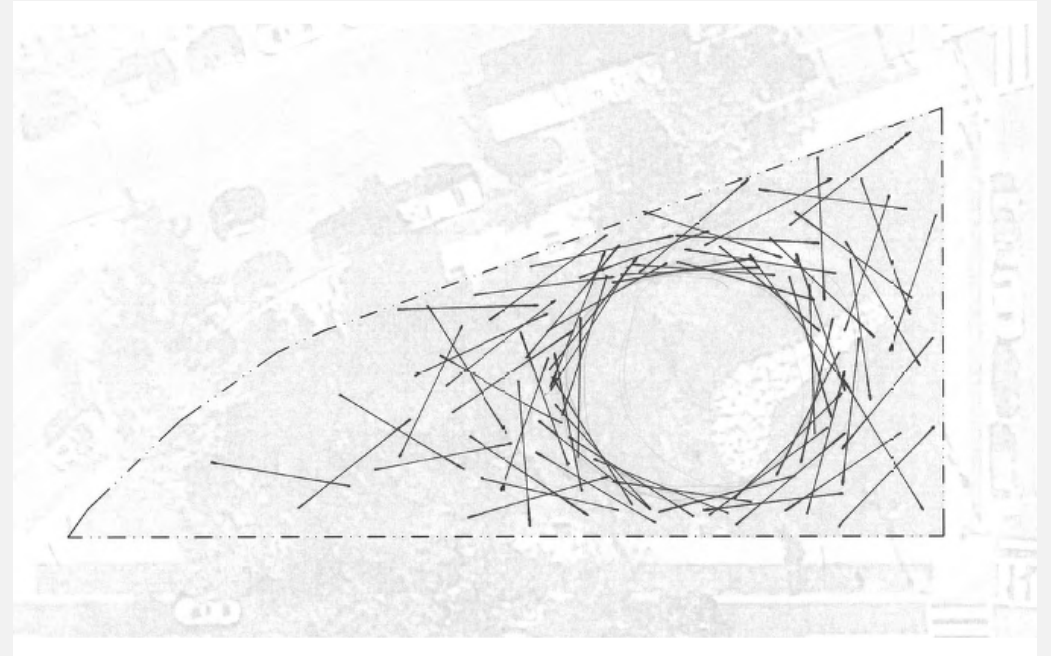
Site Location with Context



Memorial as a Story

The memorial design consists of a collection of transparent, solid glass elements arranged on the site in a seemingly accidental manner which aggregate to form a pure cylindrical space at the heart of the site, suggesting the way ostensibly disconnected facts coalesce to form a journalist's story.

Experiencing the memorial is a **journey of discovery** that unfolds slowly, space by space like a story, and casts the visitor in the role of investigative journalist pursuing truth wherever it leads.

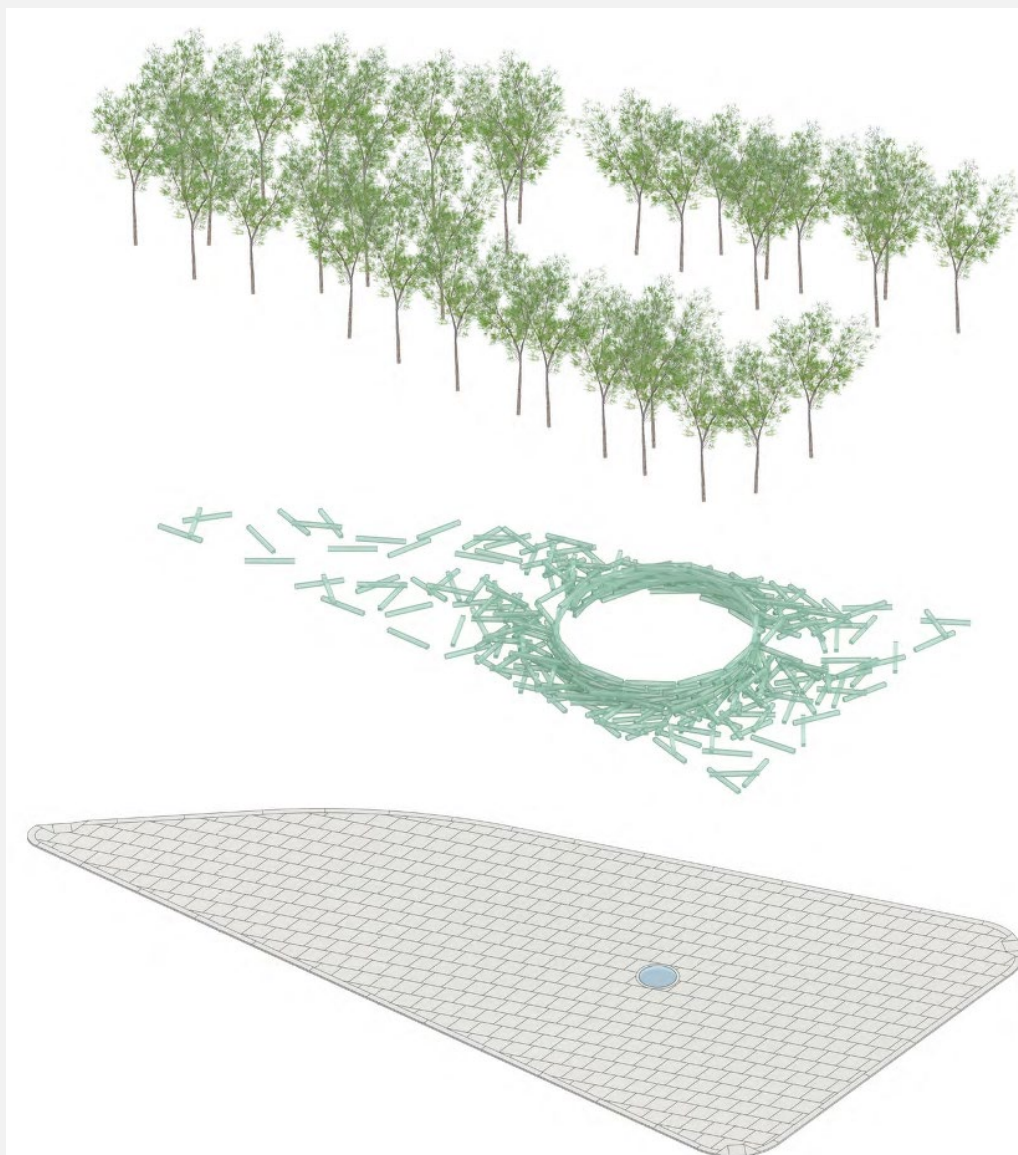


Aerial View

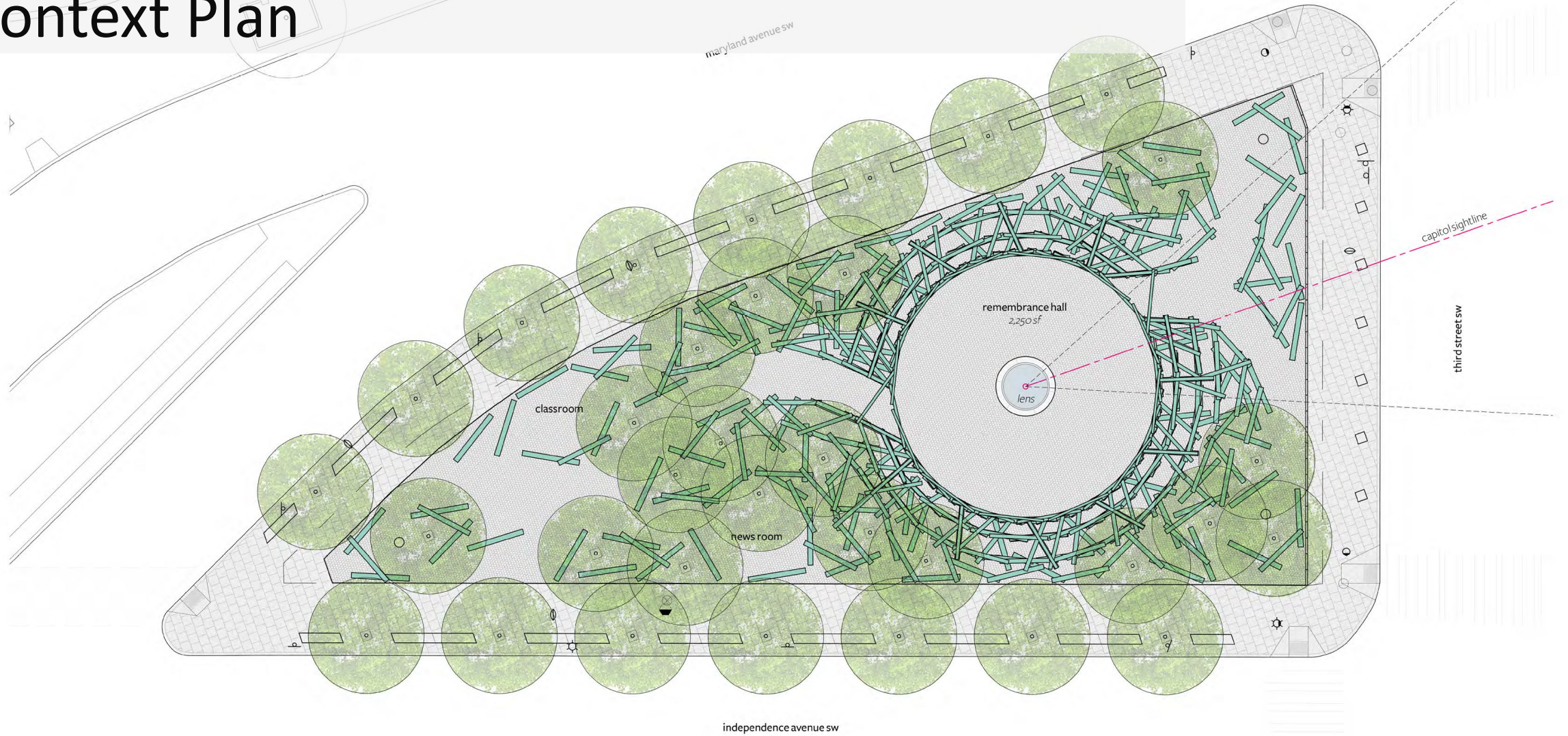


Memorial Components

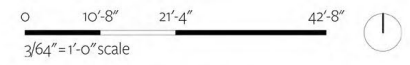
The memorial design consists of the interplay of three superimposed design elements –a hardscape stone plaza overlaid with a grove of trees that sidestep the array of cast glass elements which aggregate to form the memorial’s circular Remembrance Hall at the heart of the site.



Context Plan



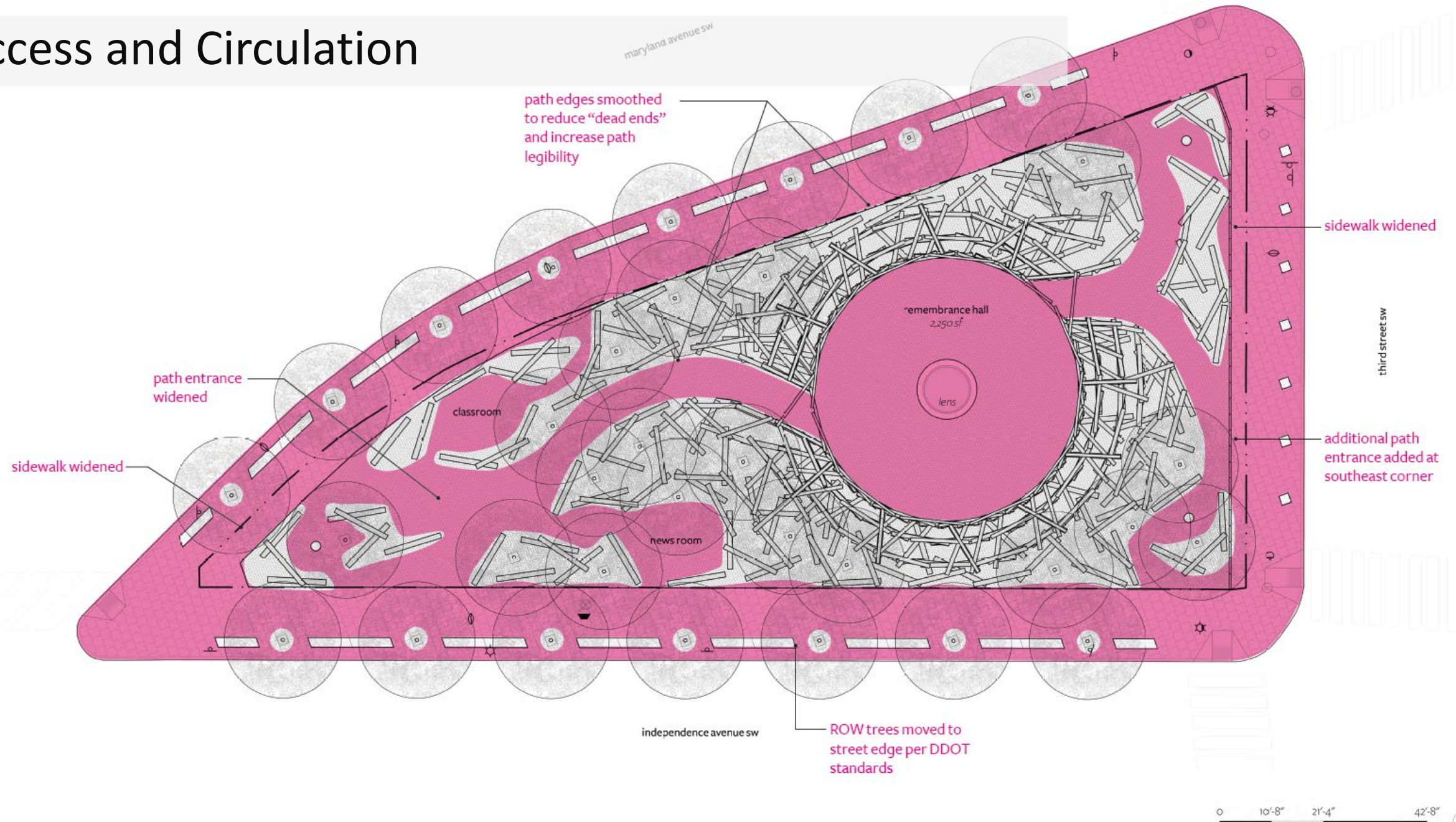
- symbolkey
- parking meter
 - manhole
 - ⊖ water meter vault
 - ⊗ water valve vault



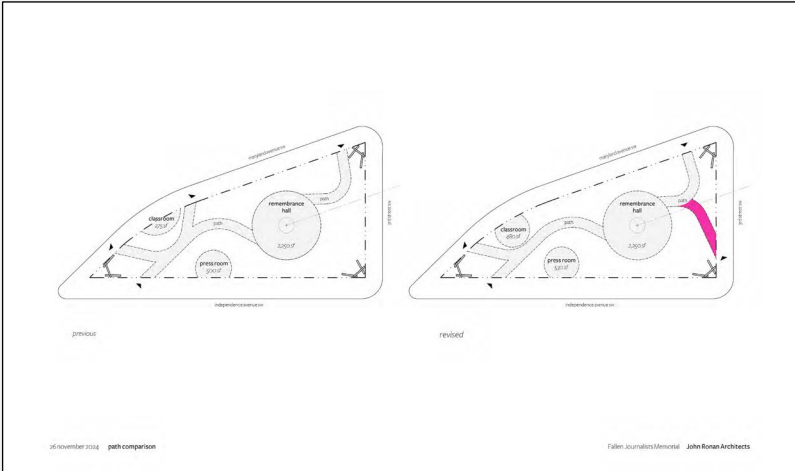
15 July 2007 memorial plan

Fallen Journalists Memorial John Bann Architects

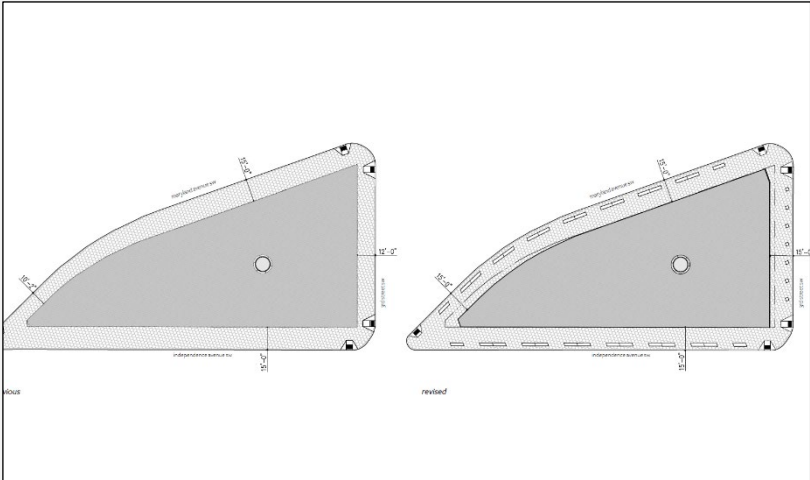
Access and Circulation



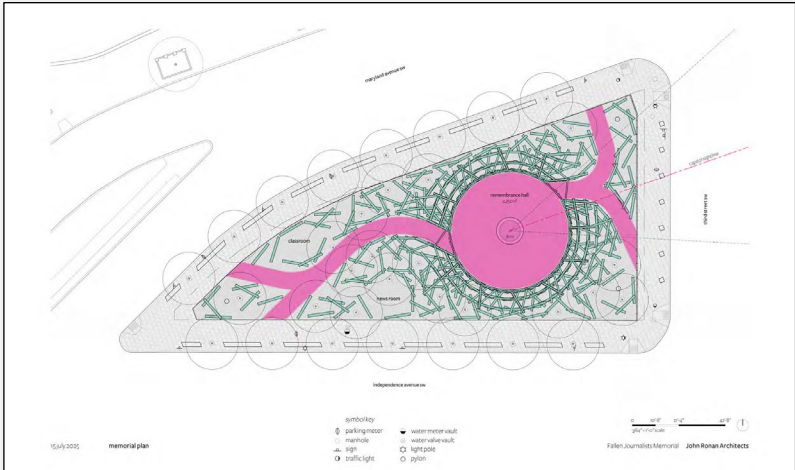
Access and Circulation



Path Comparison



Sidewalk widths to 15' - 0"



The visitor path maintains an 8' clear width throughout (3' clear width is required per the ADA and ABA).



Path with ADA clear space.

Access and Circulation



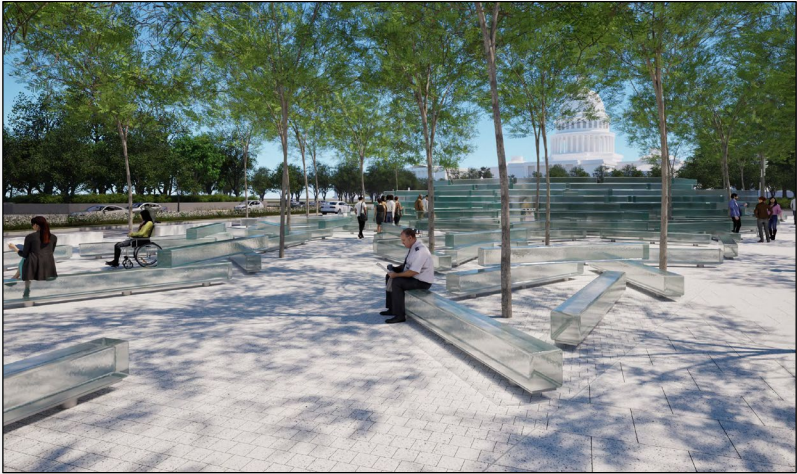
Independence Avenue ROW



Third Street ROW

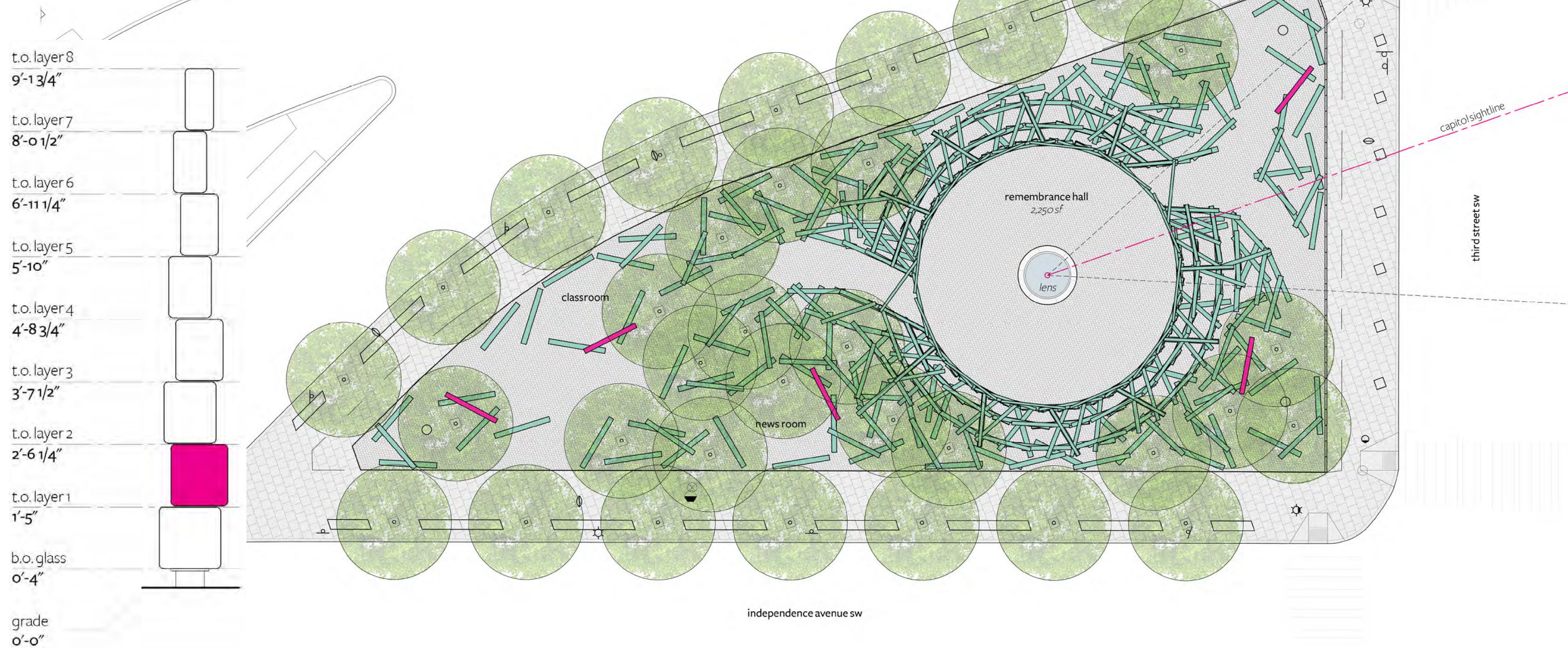


Maryland Avenue ROW



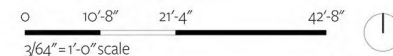
Southeast Corner

Quote Location Study



symbol key

- parking meter
- manhole
- ⊖ water meter vault
- ⊗ water valve vault

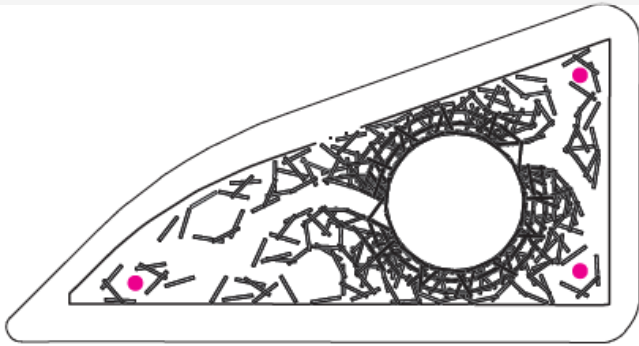


15 july 2022

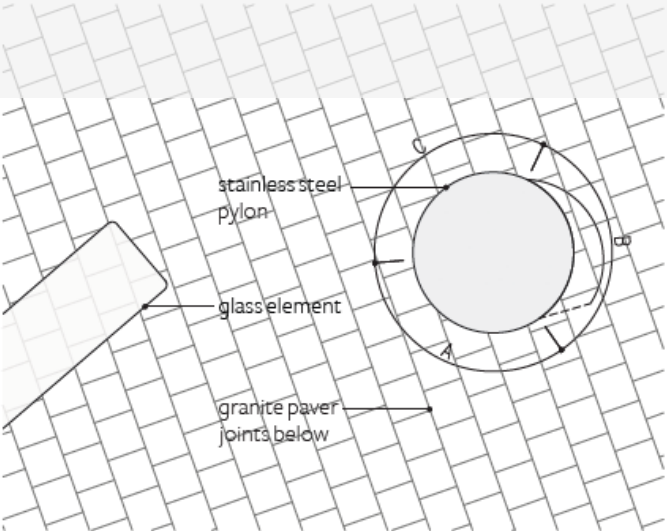
memorial plan

Fallen Journalists Memorial John Boman Architects

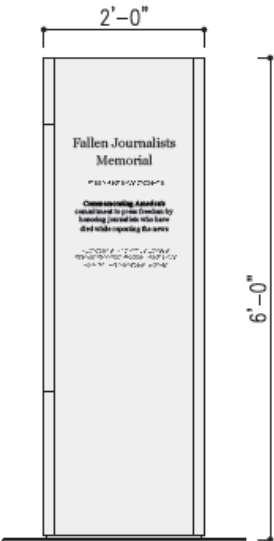
Pylon Locations



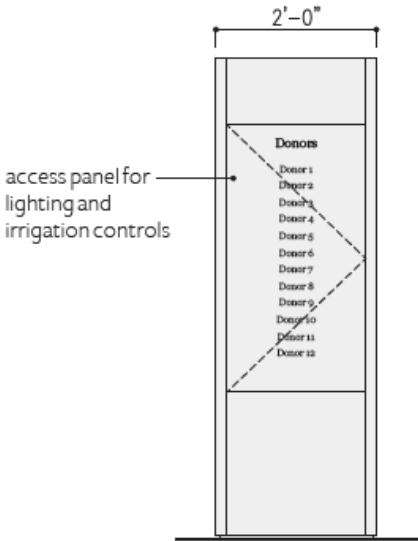
key plan



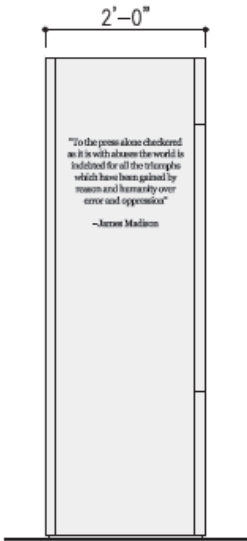
plan



elevation A
fallen journalists memorial



elevation B
donors



elevation C
quote

Pylon



Remembrance Hall

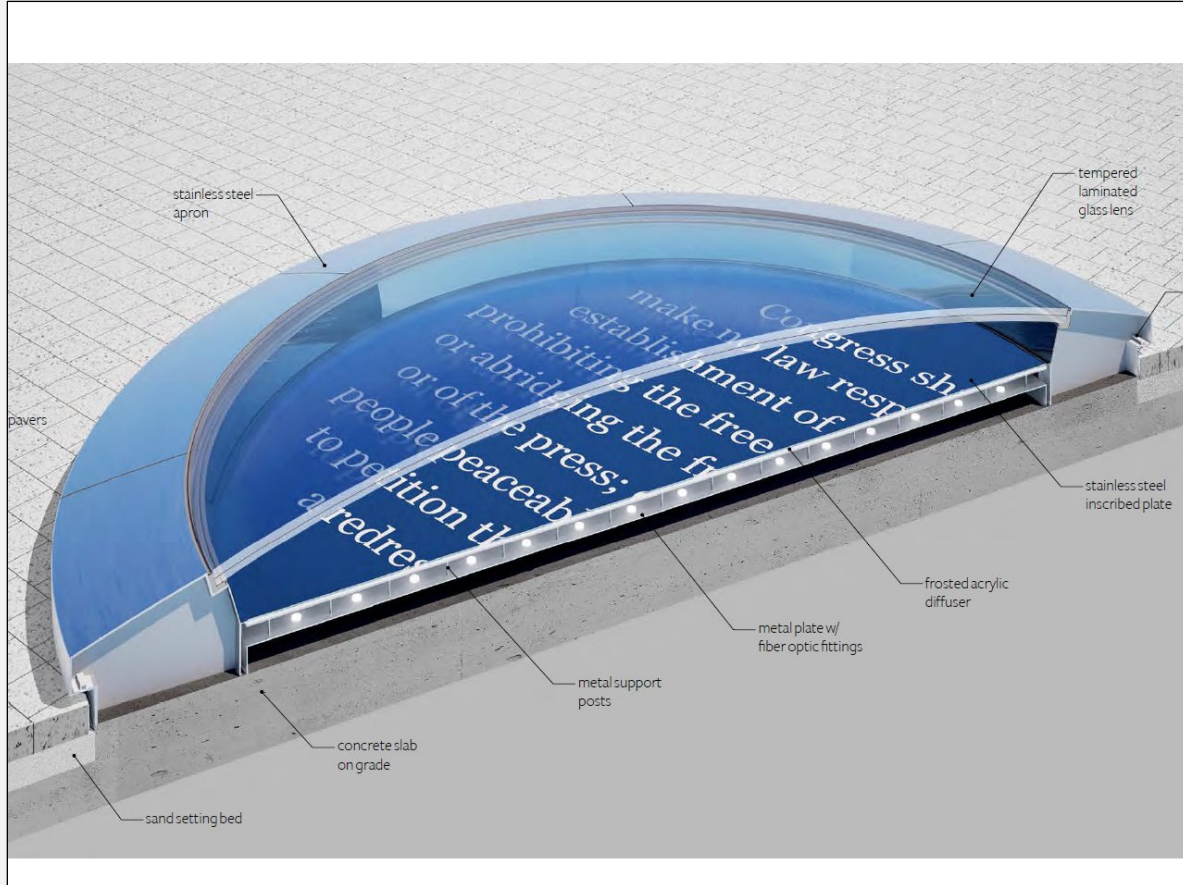


*Congress shall
make no law respecting an
establishment of religion, or
prohibiting the free exercise thereof,
or abridging the freedom of speech,
or of the press; or the right of the
people peaceably to assemble, and
to petition the Government for
a redress of grievances.*

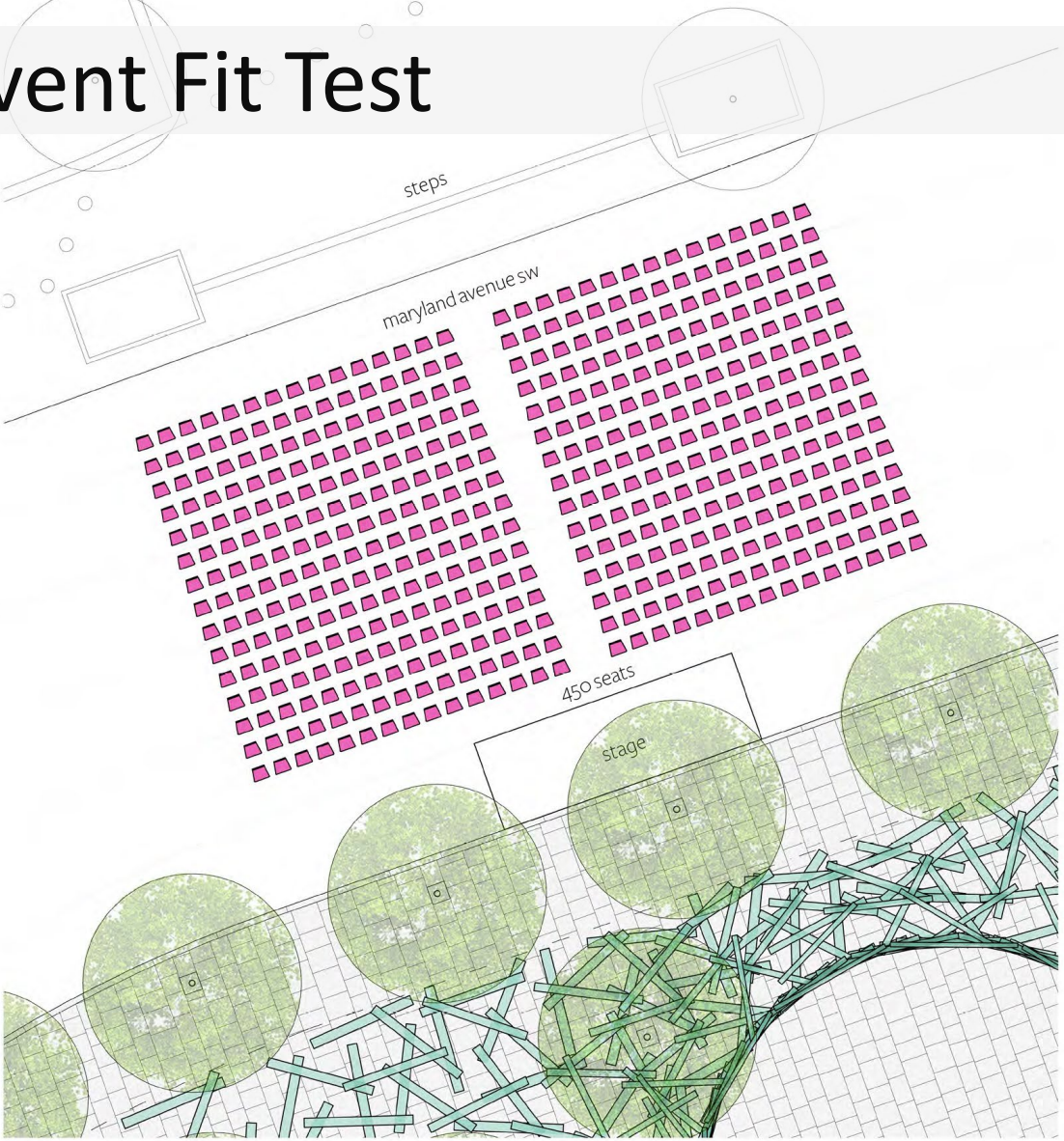
Lens Revision



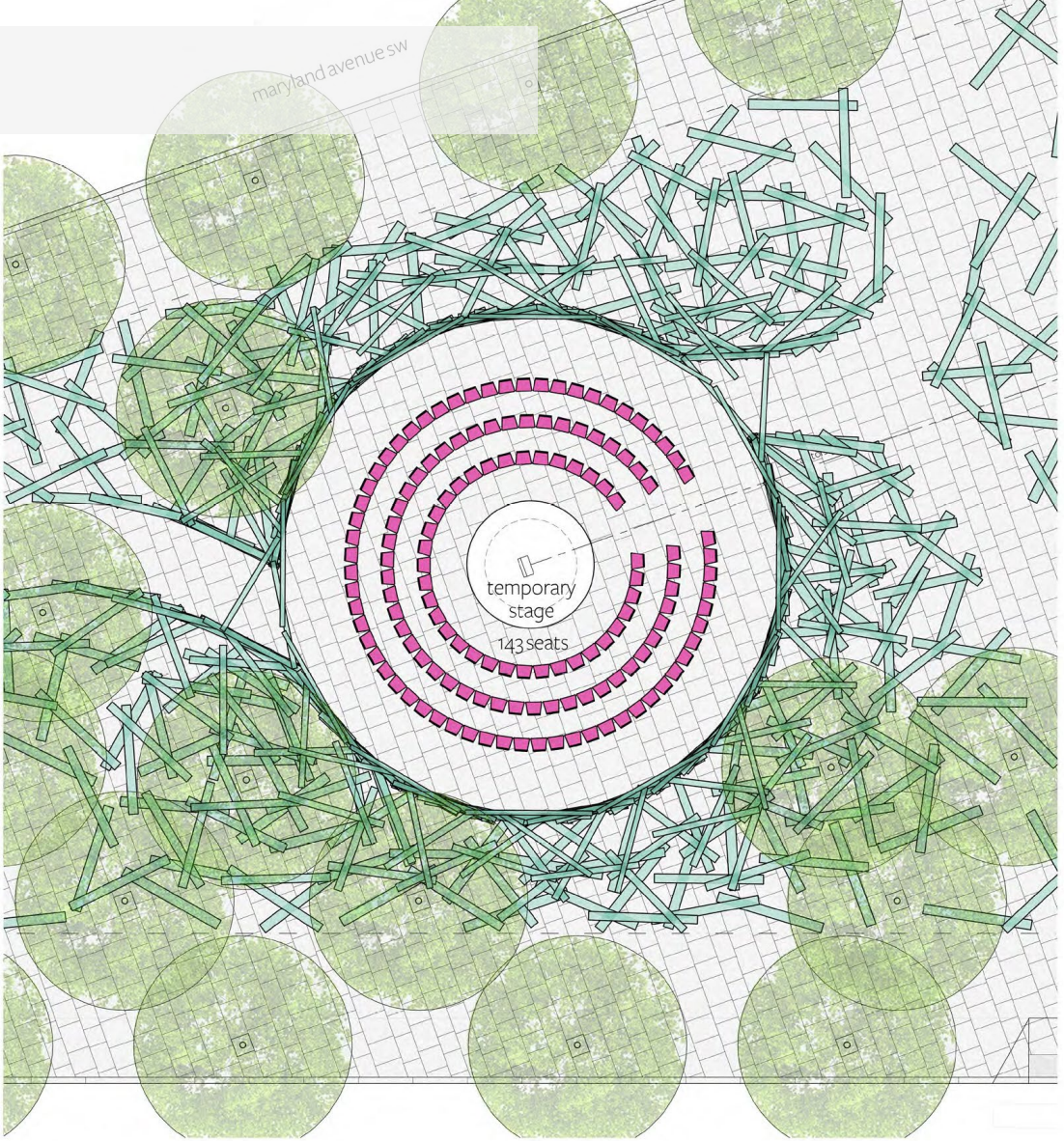
Lens



Event Fit Test



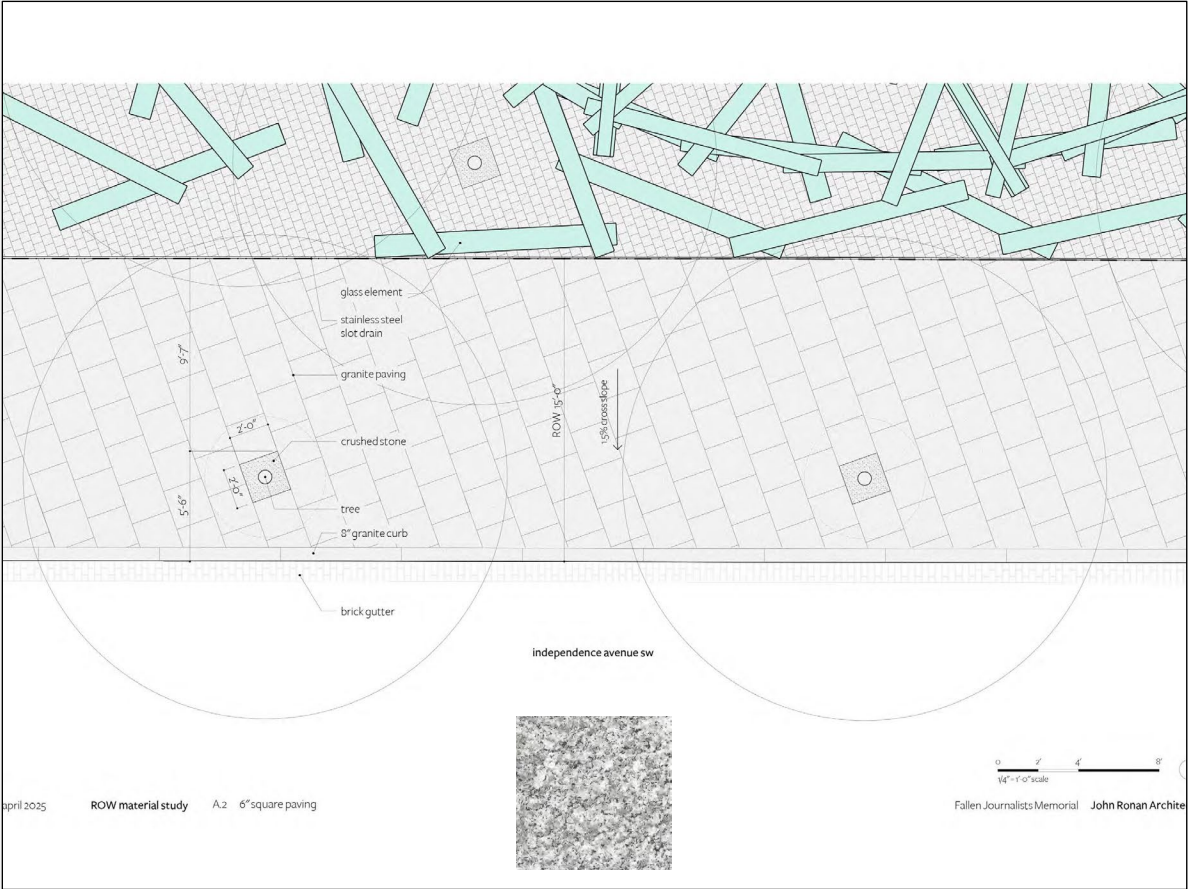
maryland ave test fit 450 seats



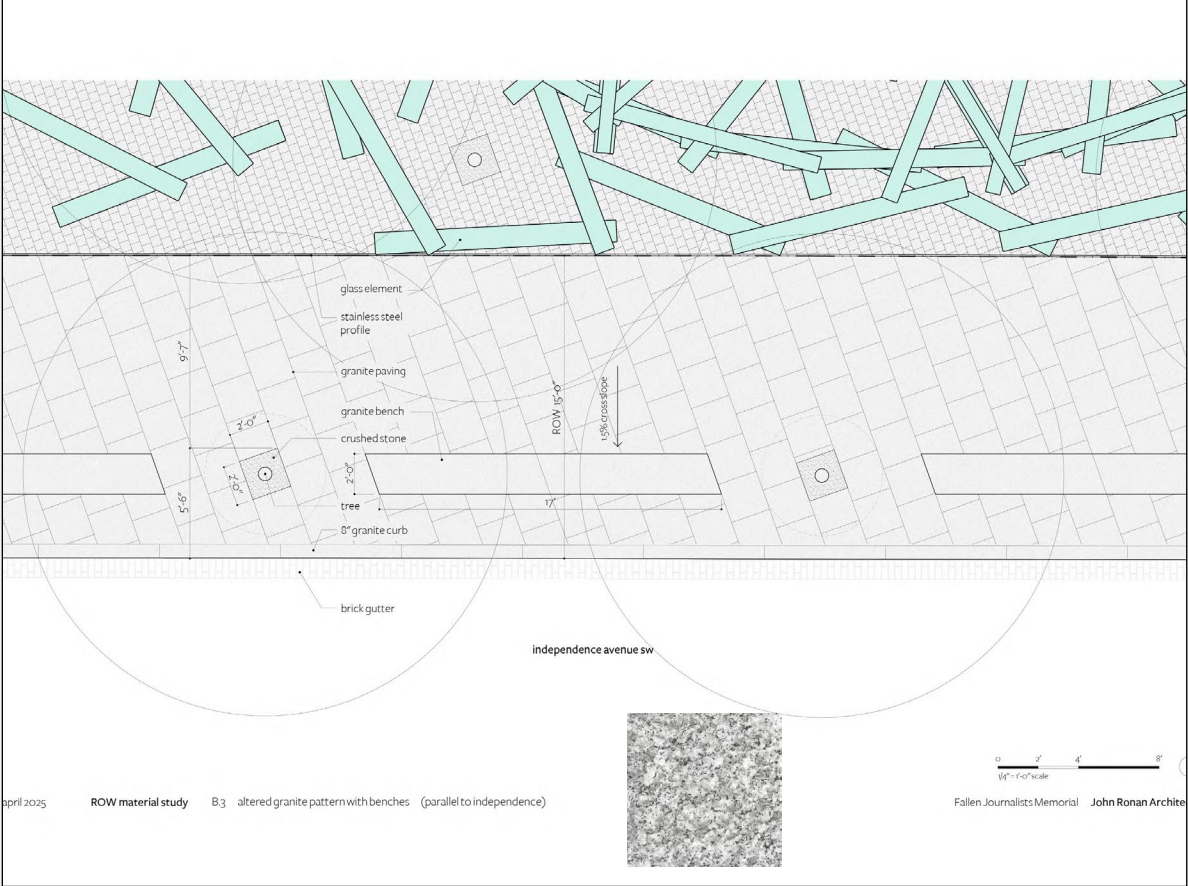
remembrance hall test fit 143 seats



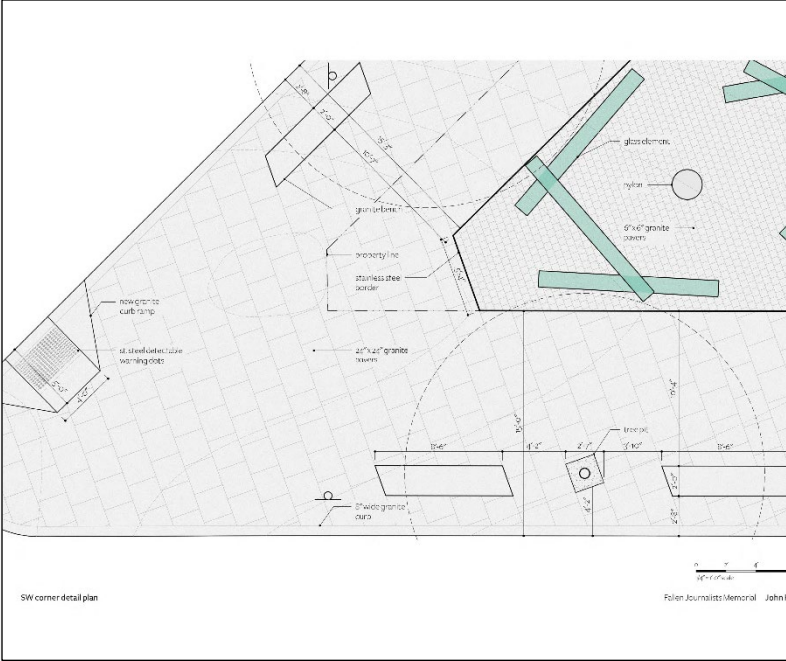
Streetscape Design – Proposed ROW



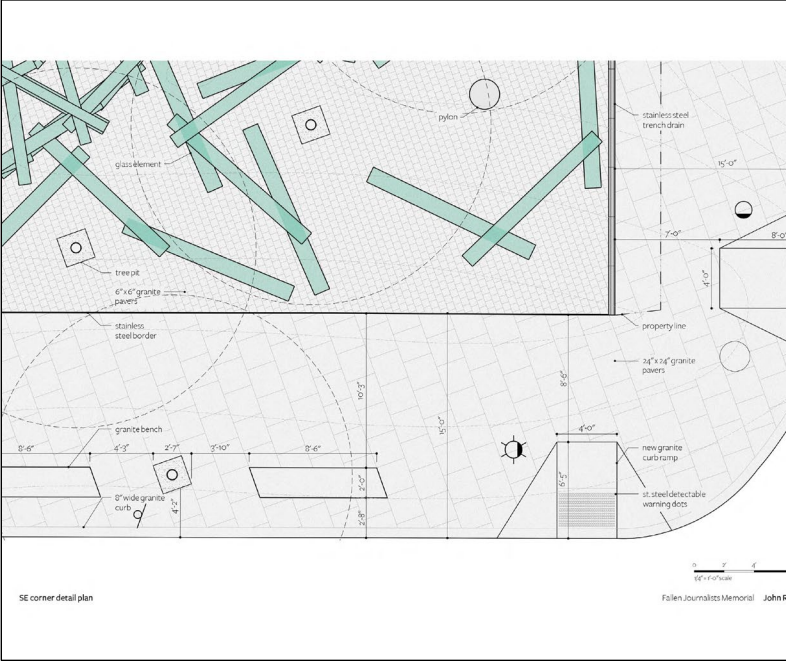
Streetscape Design – Proposed ROW with Granite Benches



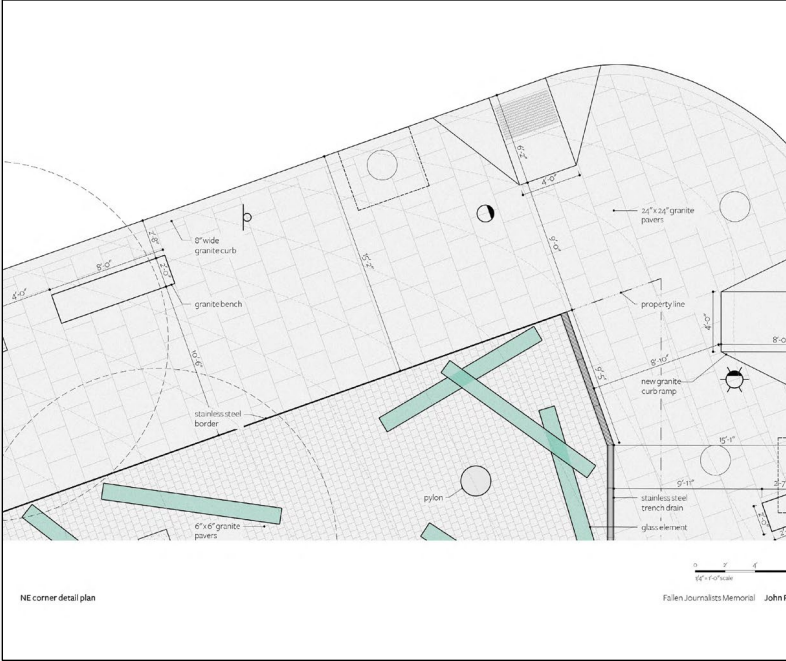
Streetscape - Corners



SW Corner

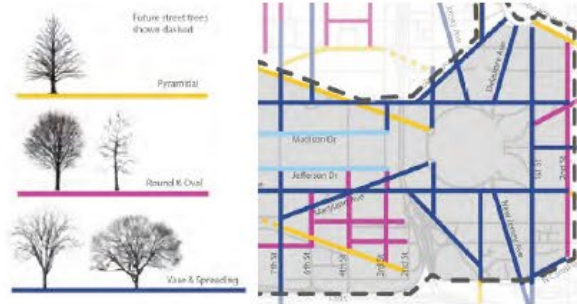


SE Corner



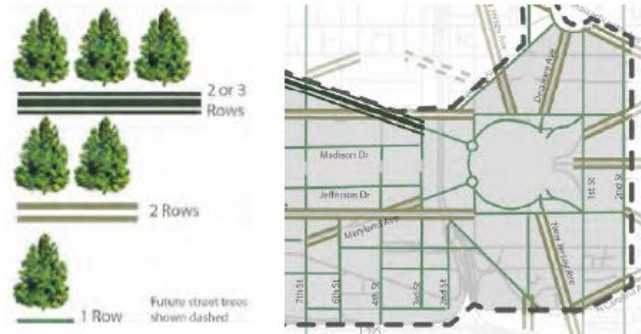
NE Corner

Streetscape - Trees



VASE & SPREADING
Medium (40-60 feet mature height)
<i>Celtis occidentalis</i> / Common Hackberry
<i>Chionanthus retusus</i> and cultivars
<i>Eucommia ulmoides</i> / Hardy Rubber Tree
<i>Gleditsia triacanthos</i> / Thornless Honeylocust
<i>Gymnocladus dioicus</i> / Kentucky Coffee Tree
<i>Gymnocladus dioicus</i> [Espresso-JFS] / Espresso Kentucky Coffee Tree
<i>Ulmus</i> [Morton Glossy] / Triumph Elm
<i>Ulmus</i> [Patriot] / Patriot Elm

a mix of honey locust cultivars cover the site. honey locusts are listed as an approved "vase and spreading" tree in the monumental core streetscape design guidelines.



2 rows of street trees are provided along independence avenue.



Streetscape – Additional Planting

Schizachyrium scoparium
Little Blue Stem

Salvia lyrata
Lyre Leaf Sage

Fothergilla gardenii
Dwarf Fothergilla

Pycnanthemum tenuifolium
Mountain Mint

Rhus aromatica 'gro-low'
Aromatic Sumac

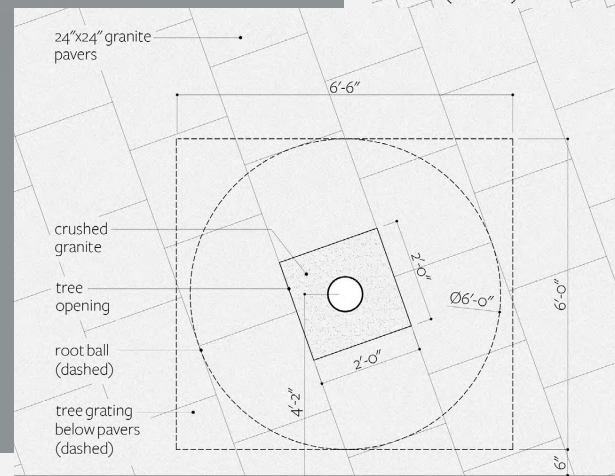
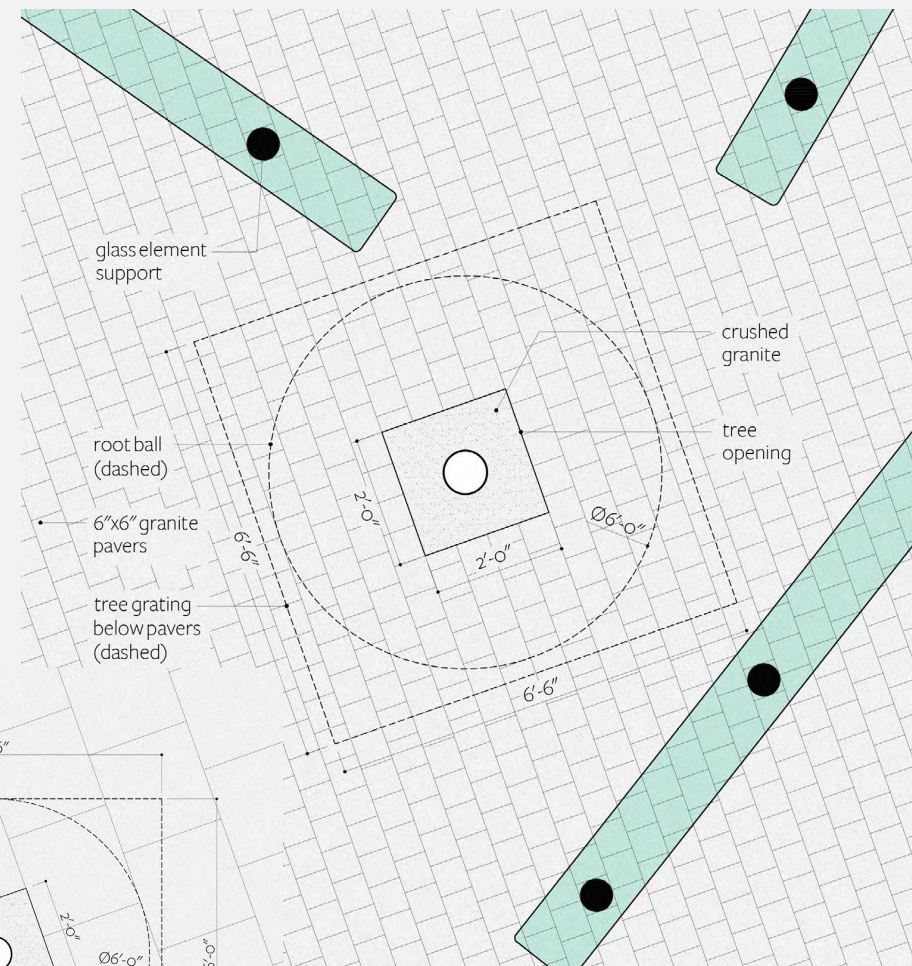
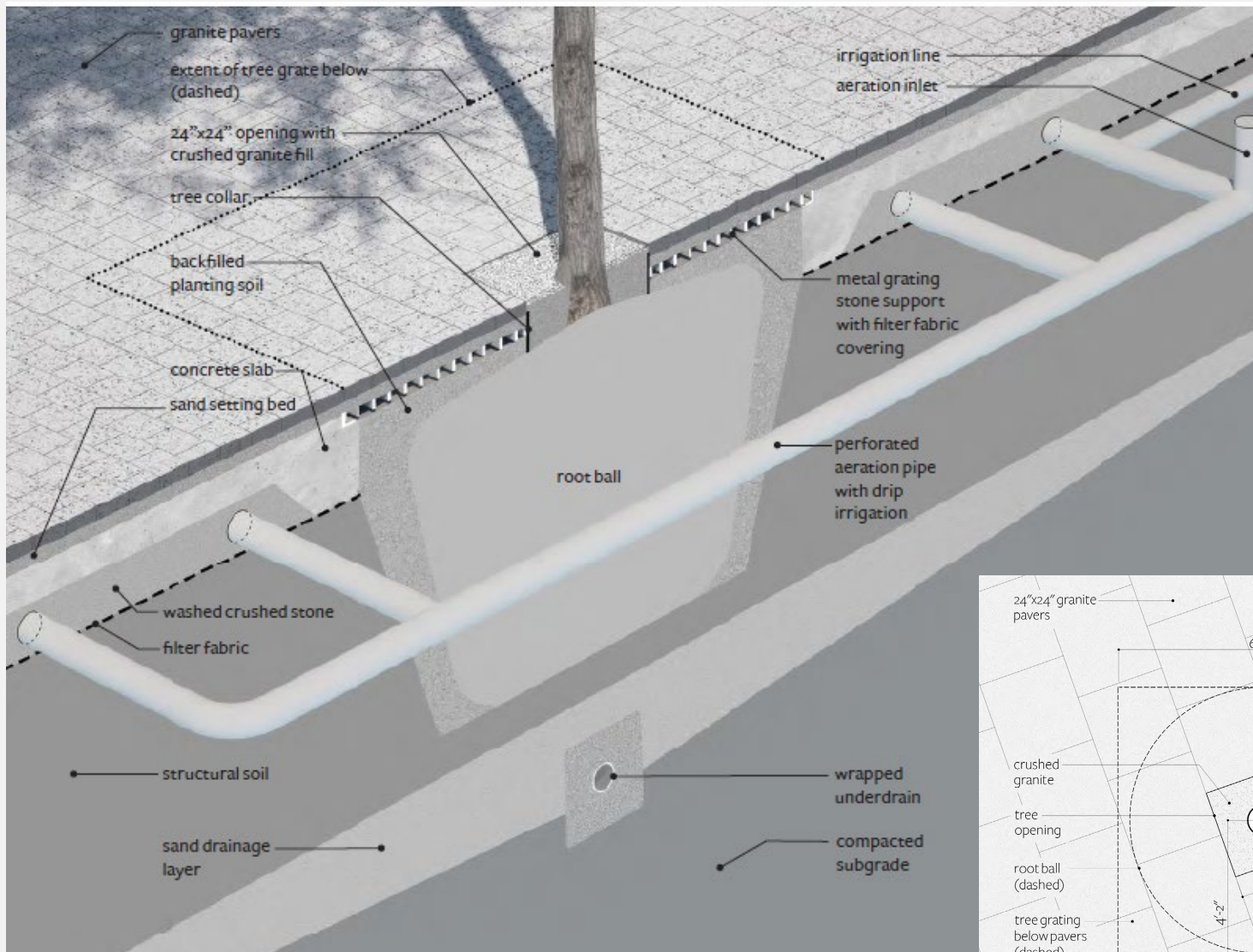
Carex flacca
Blue sedge

Symphiotrichum ericoides
Heath Aster

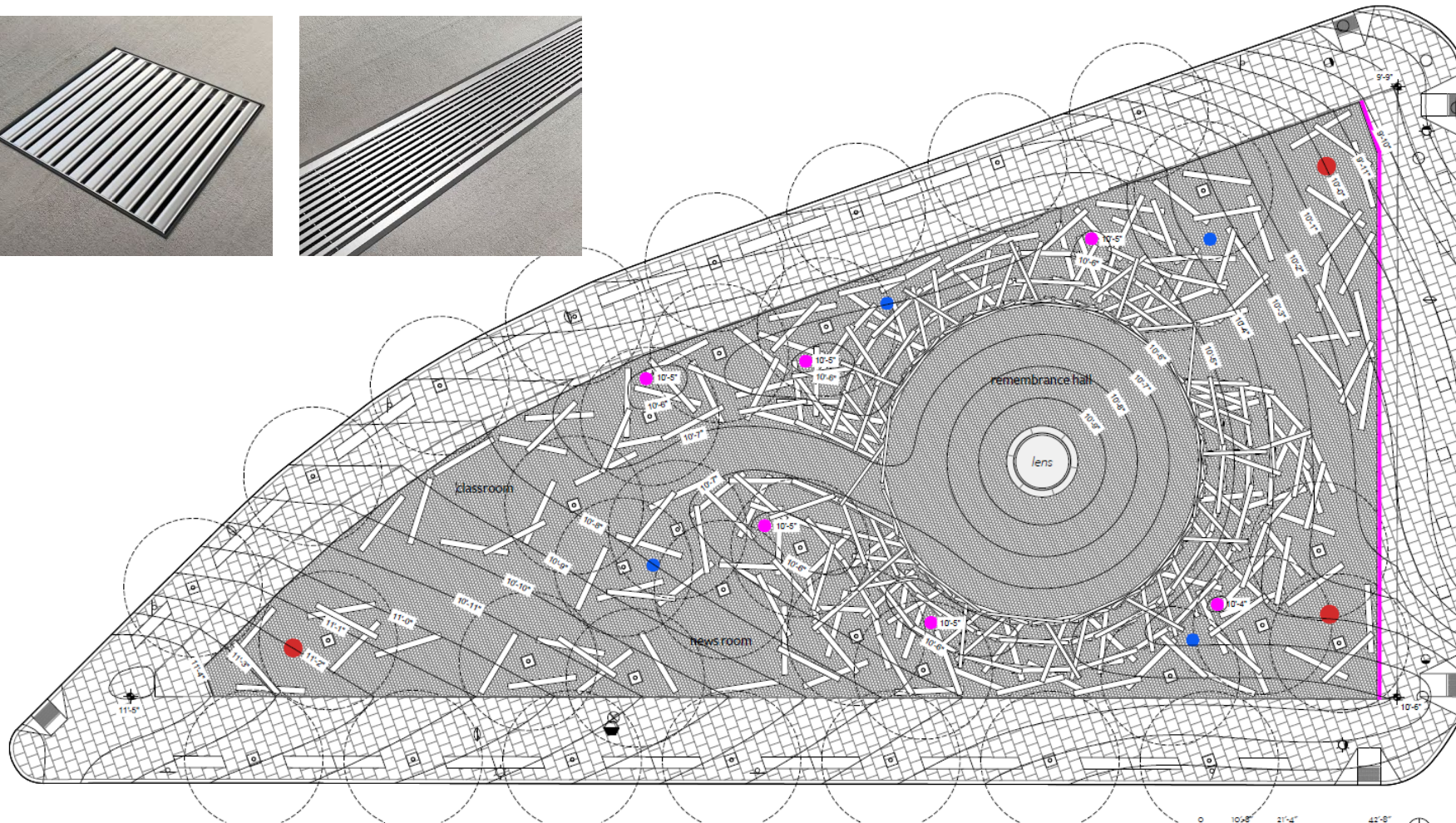
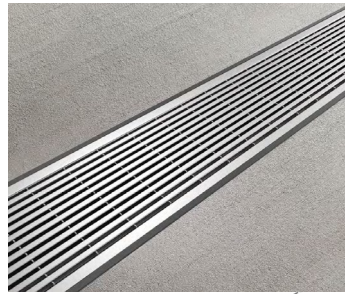
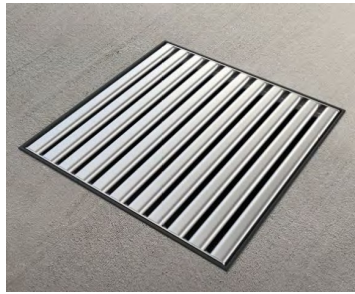
Liriope spicata
Creeping Liriope



Streetscape – Tree Pits and Wells



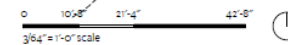
Site Drainage and Utilities



02 october 2025 site drainage and utilities

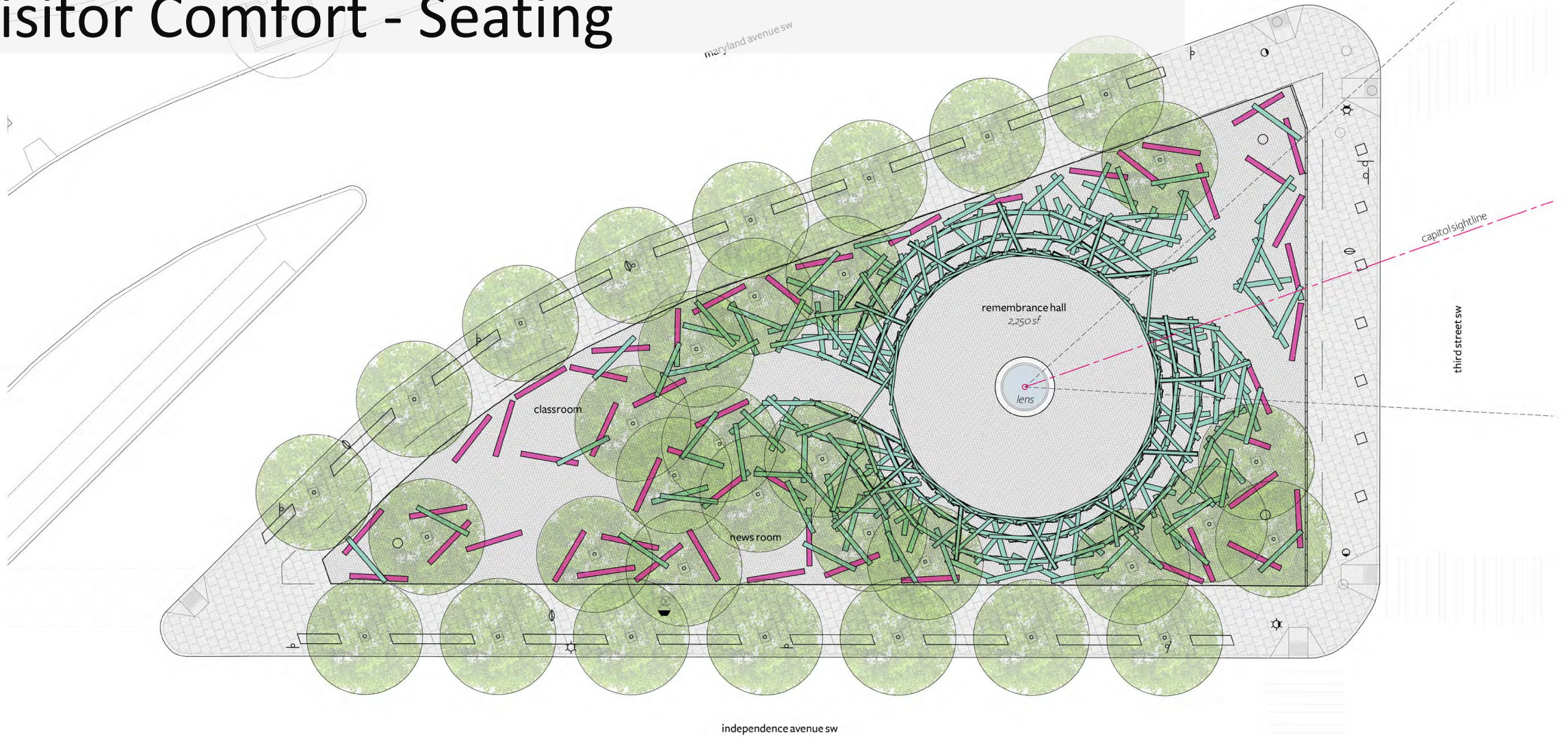
symbol key

Ⓜ parking meter	⊕ water meter vault	● pylon
○ manhole	⊗ water valve vault	— trench drain
Ⓢ sign	☆ light pole	● area drain
Ⓣ traffic light	⊙ tree	● hose bib

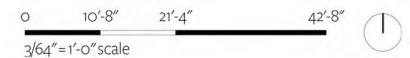


Fallen Journalists Memorial John Ronan Architects

Visitor Comfort - Seating



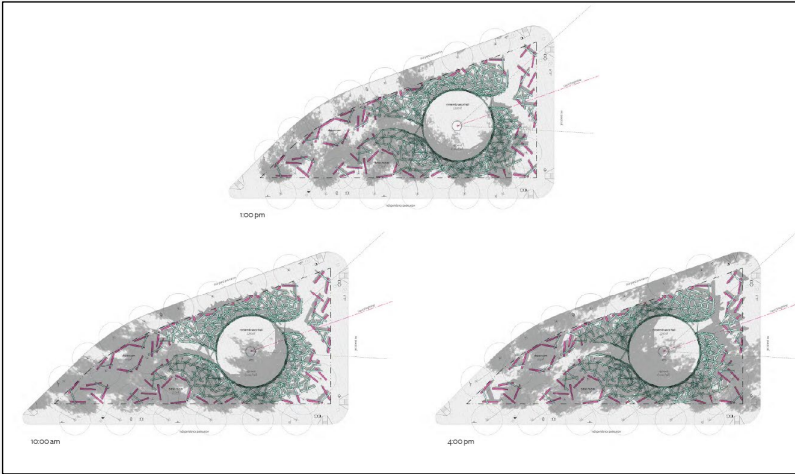
- symbol key
- parking meter
 - manhole
 - ⊗ water meter vault
 - ⊗ water valve vault



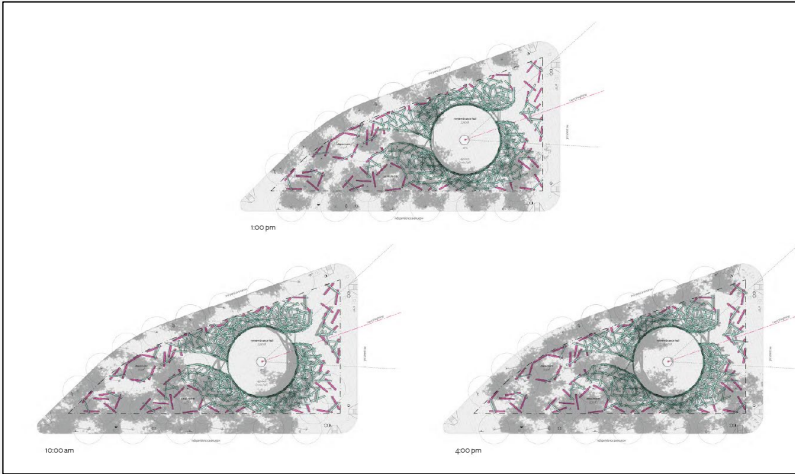
15 July 2007 memorial plan

Fallon Journalists Memorial John Bann Architects

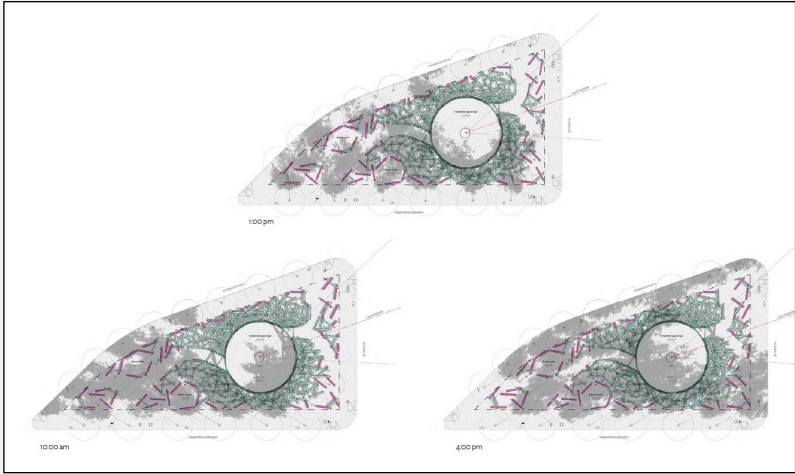
Visitor Comfort – Shade Study



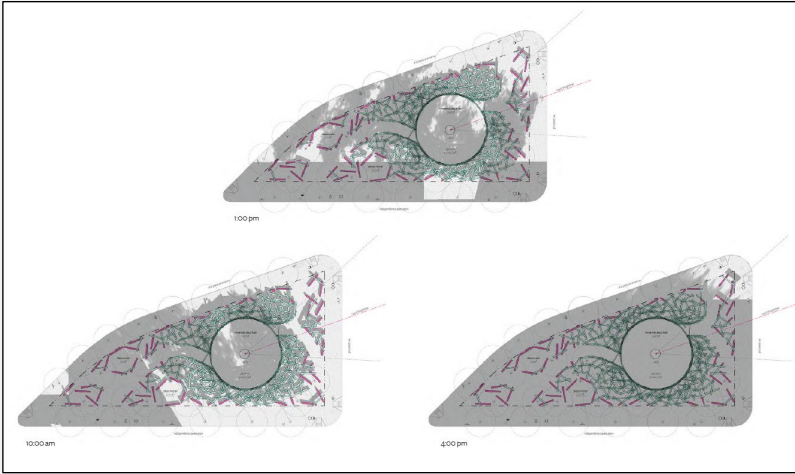
March



June



September



December

Seasonal Views



Spring/Summer



Fall



Winter

Viewshed Analysis



Existing



Proposed



Viewshed Analysis



Existing



Proposed



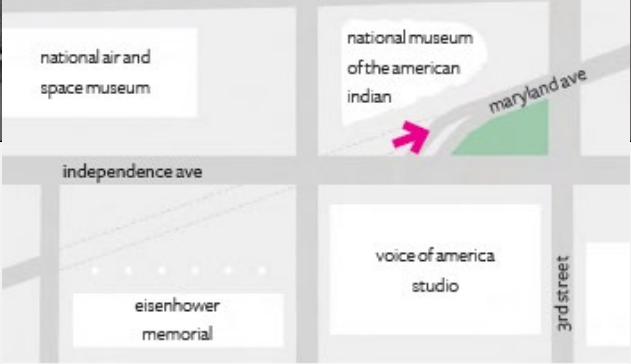
Viewshed Analysis



Existing



Proposed



Viewshed Analysis



Existing



Proposed



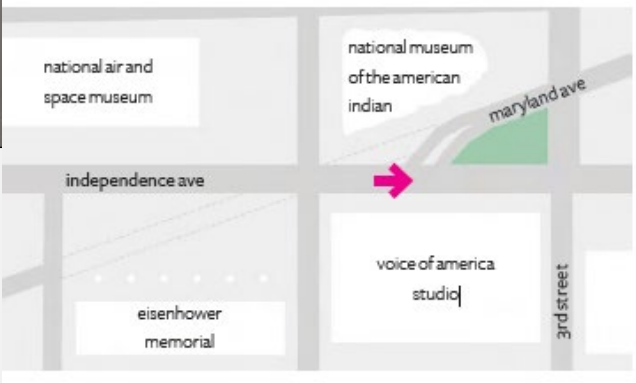
Viewshed Analysis



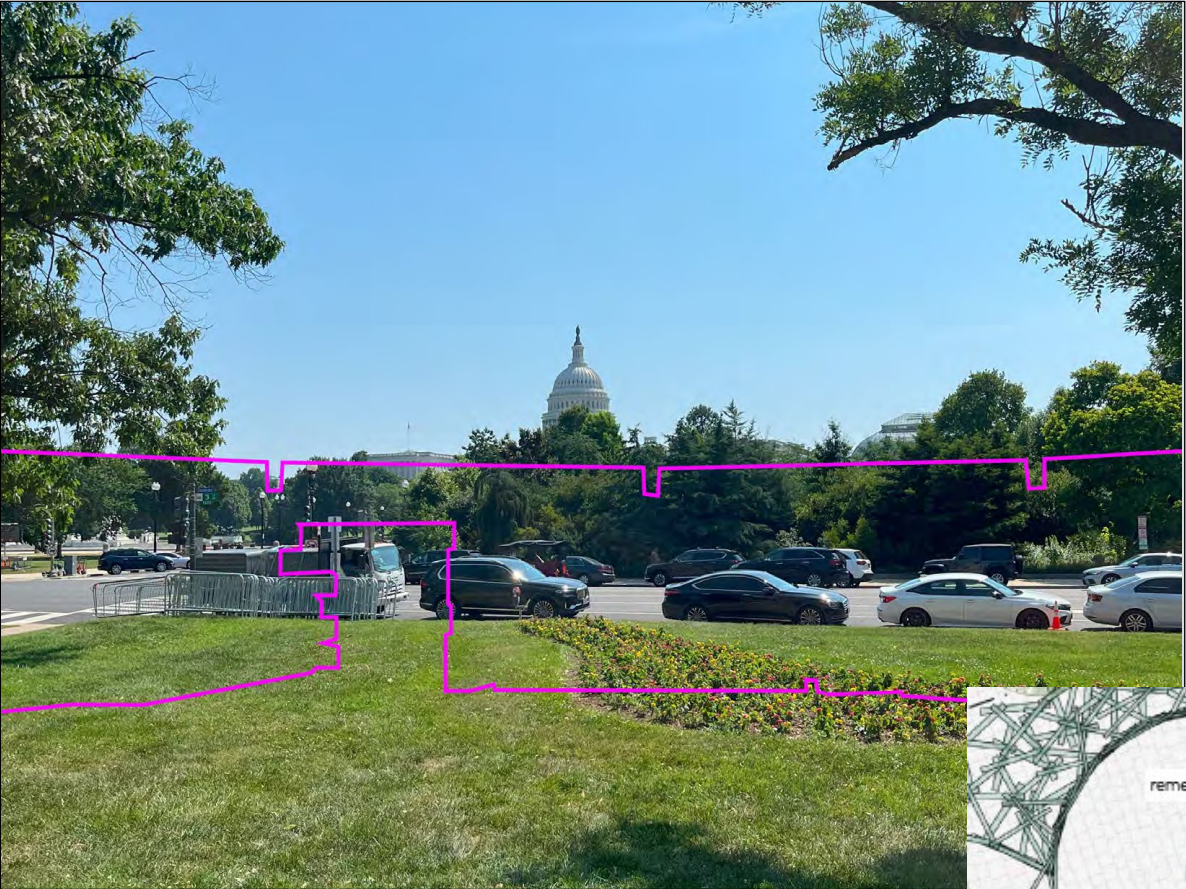
Existing



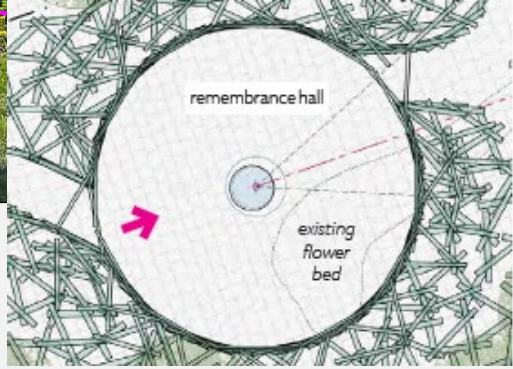
Proposed



Capitol View Study

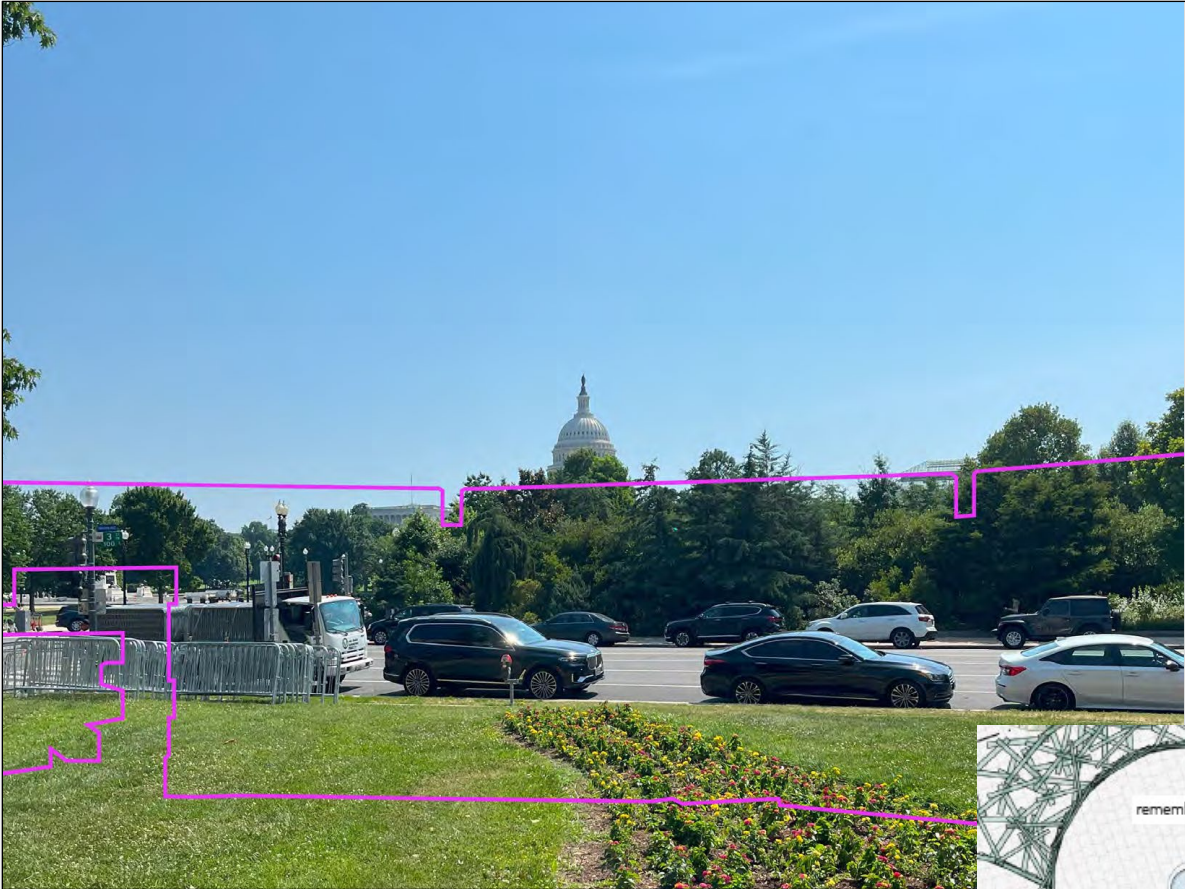


Existing

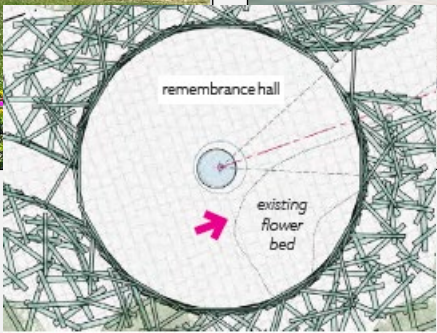


Proposed

Capitol View Study

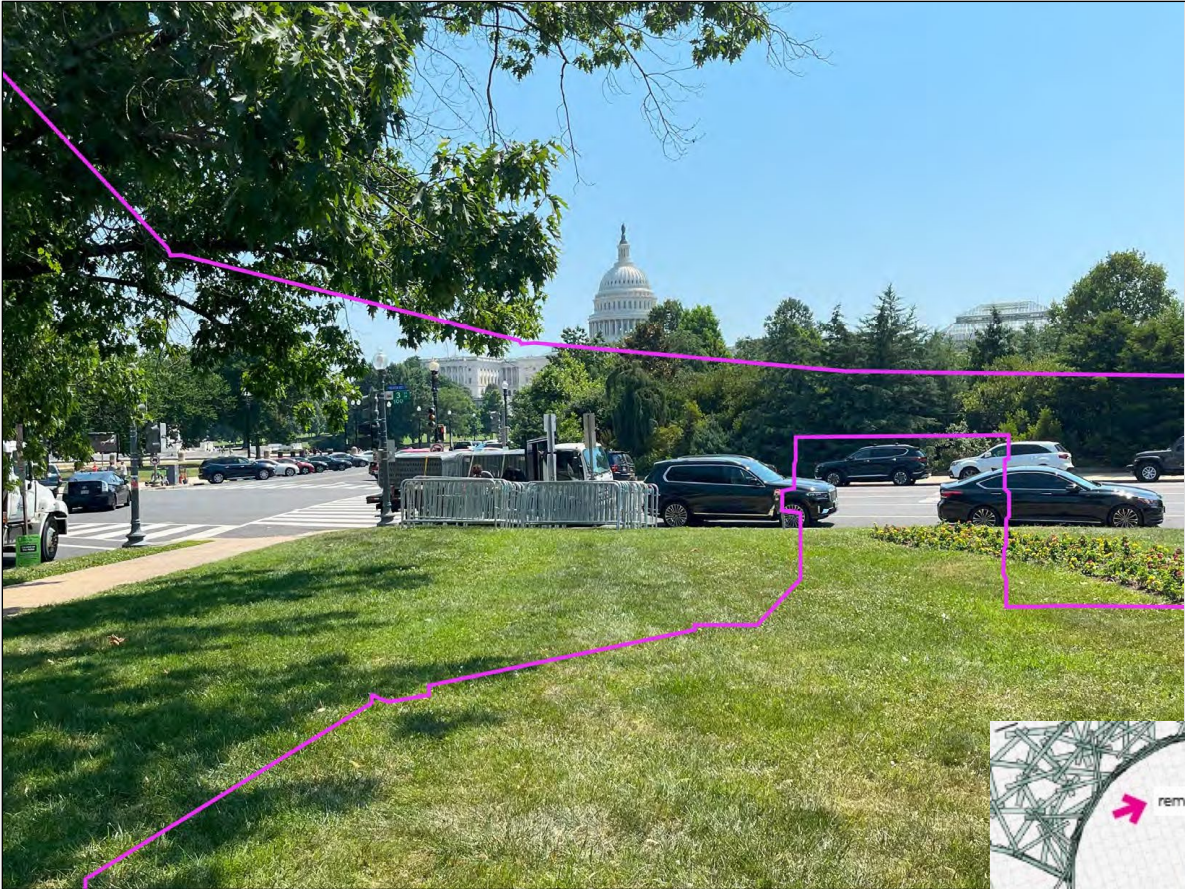


Existing

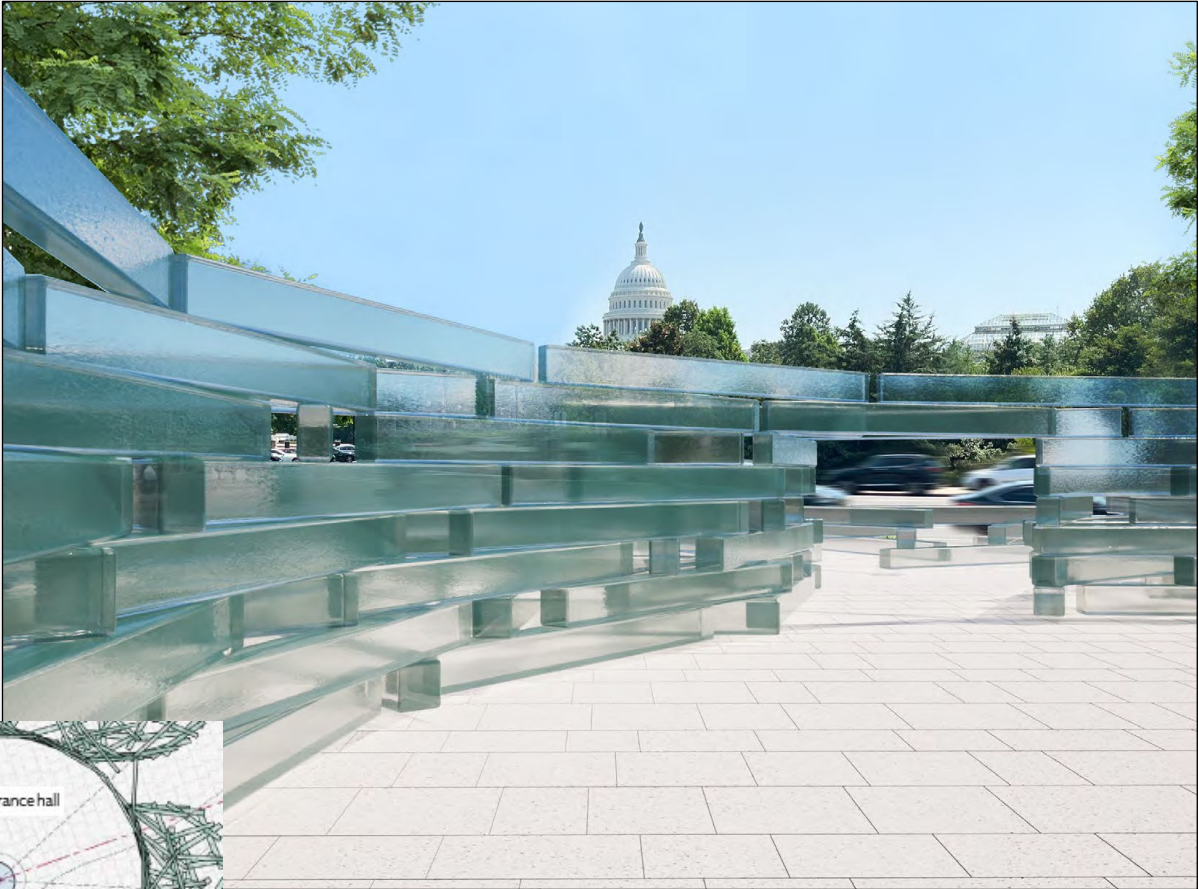
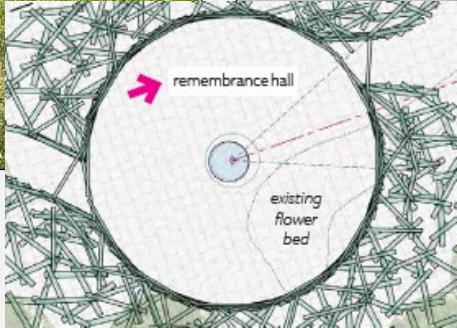


Proposed

Capitol View Study



Existing

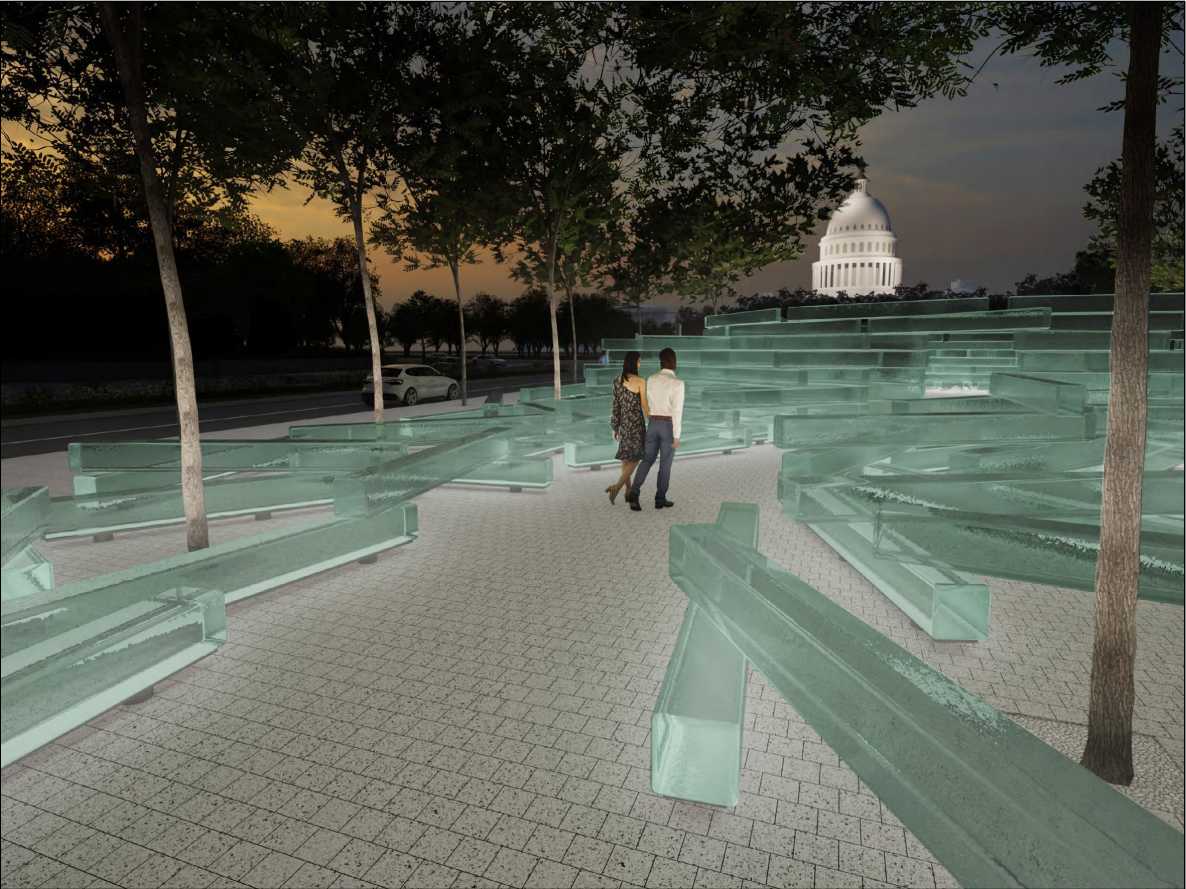


Proposed

Lighting



Lighting Study

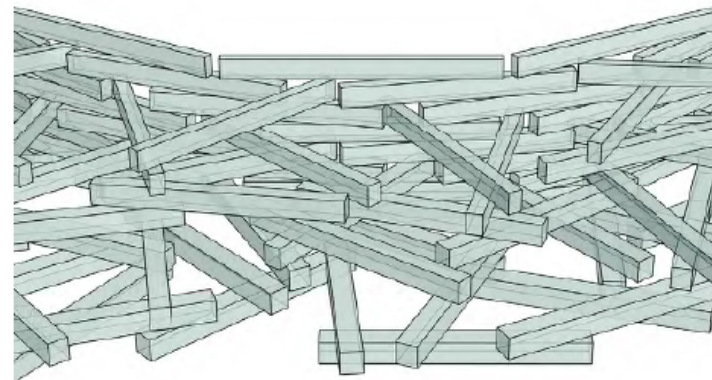
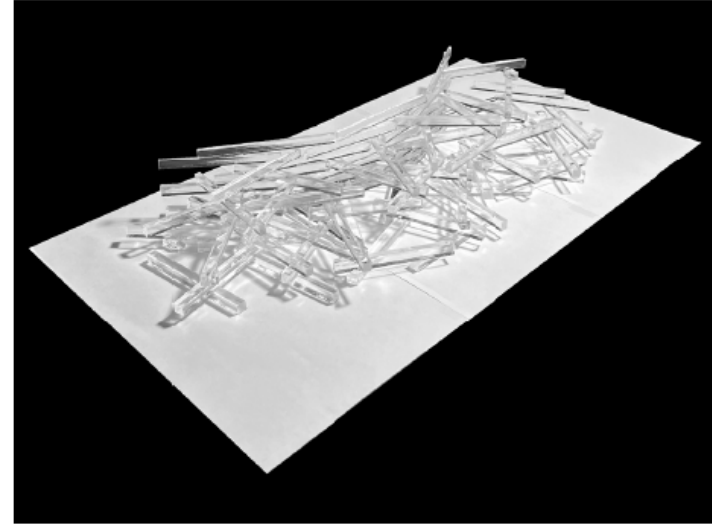
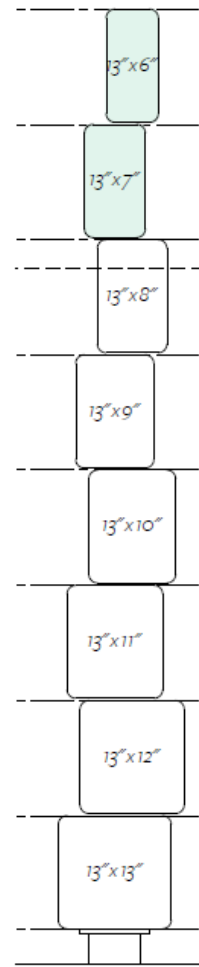
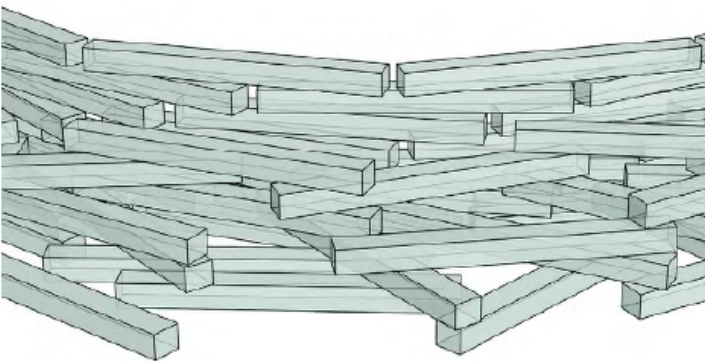
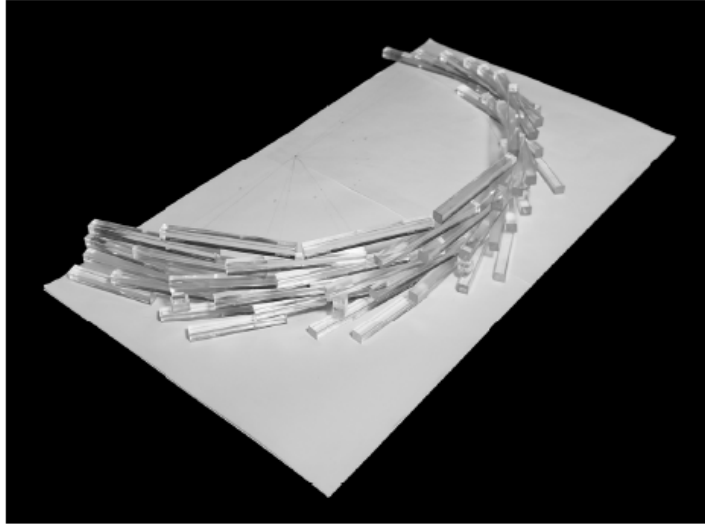
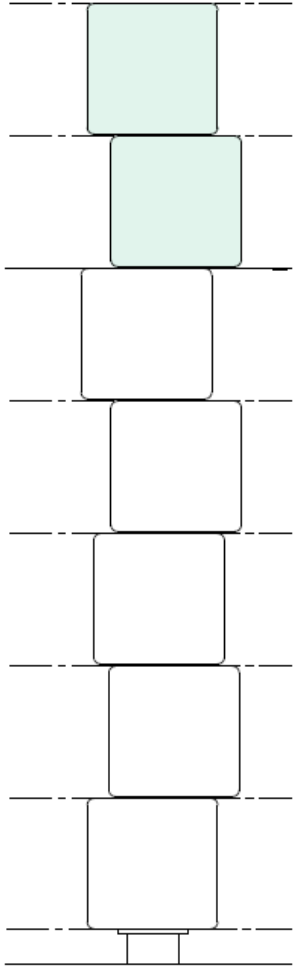


Path



Remembrance Hall

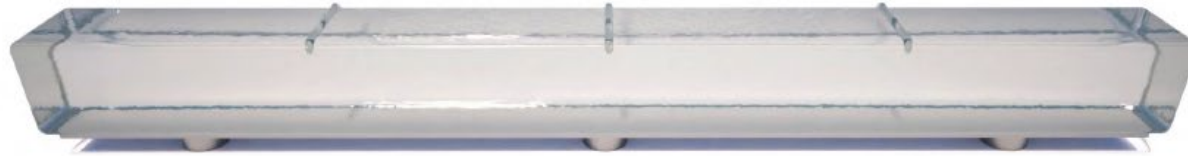
Glass Elements



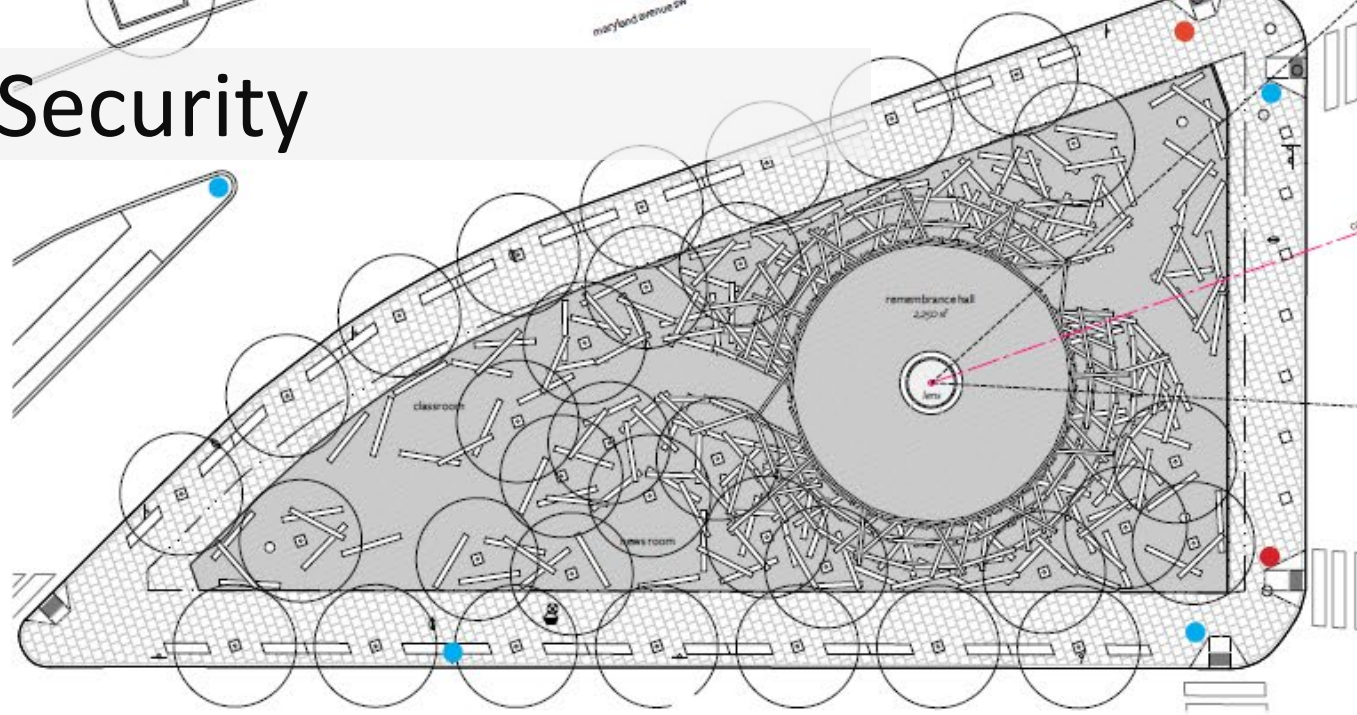
previous

revised

Skateboard Deterrence



Security



- potential security camera locations at existing street light posts
- potential security camera locations at existing traffic light posts

