

Women's Suffrage National Monument

District of Columbia

Approval of Comments on Site Selection

United States Department of the Interior

Project Summary

Commission Meeting Date: October 9, 2025

NCPC Review Authority: 40 U.S.C. § 8905

Applicant Request: Approval of Comments on Site Selection

Session: Staff Presentation

NCPC Review Officer: Laura Shipman

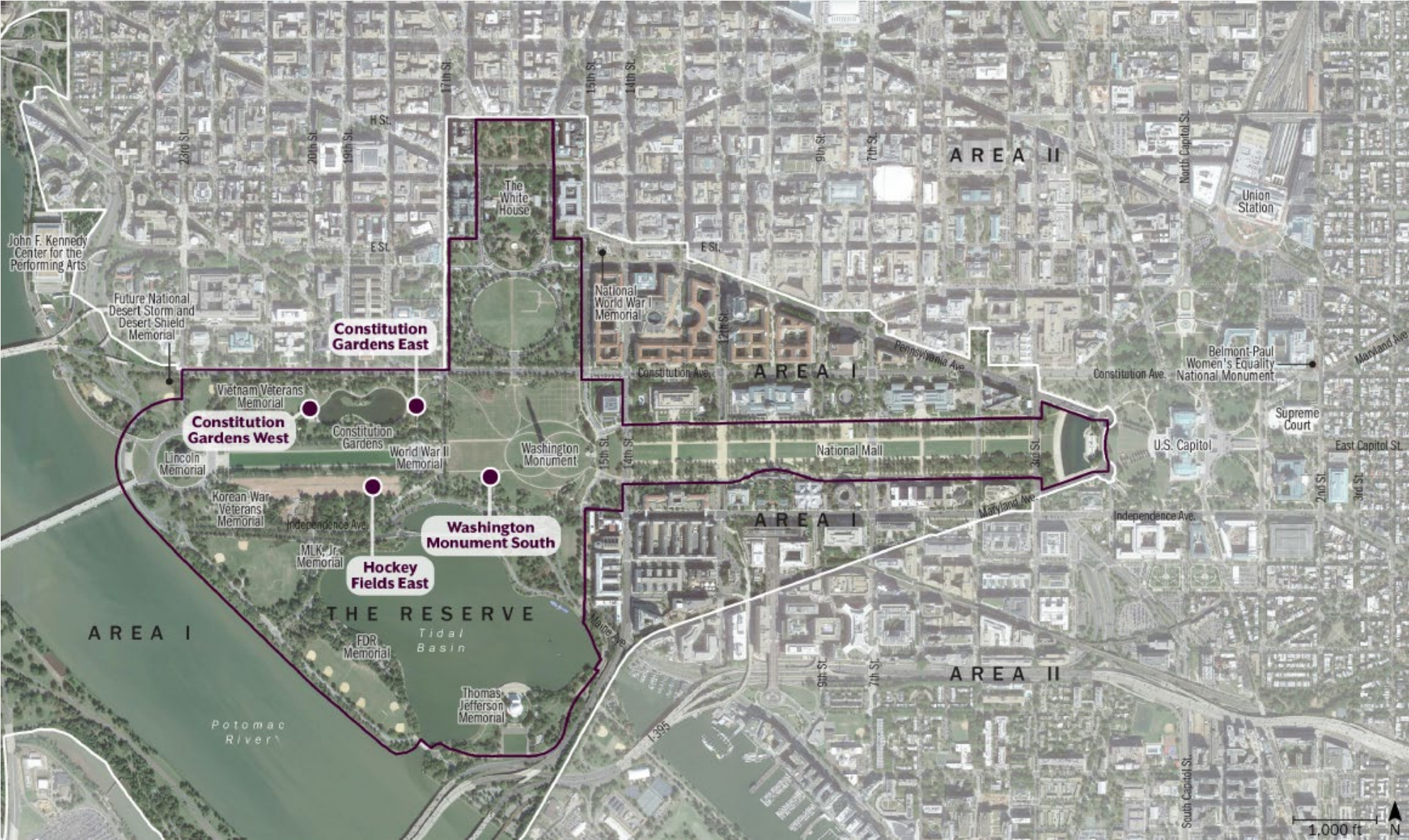
NCPC File Number: 8699

Project Summary:

The National Park Service in collaboration with the Women's Suffrage National Monument Foundation (WSNMF) has submitted a site selection study for the Women's Suffrage National Monument. The Commemorative Works Act (CWA) prohibits commemorative works within the Reserve unless authorized by specific legislation. In the case of the Women's Suffrage National Monument, Congress passed H.R. 1318, directing that the memorial be located within the Reserve. This exception was formalized with the enactment of Public Law 118-226 on January 4, 2025. The site selection study analyzed 14 potential monument sites for their suitability based on the WSNMF's monument themes, program, and selection criteria. Eight sites were shortlisted for consideration, from which four were selected for further study: Constitution Gardens West, Constitution Gardens East, Hockey Fields East, and Washington Monument South.

Once a site has been secured, the WSNMF plans to hold a design competition to identify and select a monument design. The goals and program described in the study will provide the basis for direction for the competition.

Potential Site Locations



Goals

The goal of the Women's Suffrage National Monument Foundation is to build a monument on the National Mall that:

GOAL 01

Weaves the great women of American history in amongst the giants of our founding story;

GOAL 02

Ensures every girl and woman who visits the National Mall sees herself represented in the commemorative fabric of the most visited National Park in the United States;

GOAL 03

Ignites curiosity in American women's history;

GOAL 04

Fosters a deeper understanding of the women who shaped American democracy; and

GOAL 05

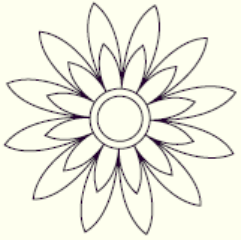
Inspires future generations in the continued pursuit of liberty and equality.

Pictured:

Suffrage envoys on their way to Washington, D.C. to present a petition to Congress containing more than 500,000 signatures, 1915.
(Source: Library of Congress)



Monument Themes and Program



Monument Themes

THE WOMEN'S SUFFRAGE NATIONAL MONUMENT WILL ENHANCE THE NATIONAL MALL BY ESTABLISHING A MEMORIAL THAT:

- Weaves the great women of American history in amongst the giants of our national story;
- Stands shoulder-to-shoulder with the other renowned commemorative works on the National Mall;
- Inspires visitors to revere the role women played throughout American history in building, shaping, and expanding our democracy;
- Celebrates the role of our foremothers in building a more just and equal America;
- Tells a diverse and broad story of the fight for the 19th Amendment; and
- Encourages a continued investment in America's constitutional promise of freedom, justice, and equality for all.



Monument Program

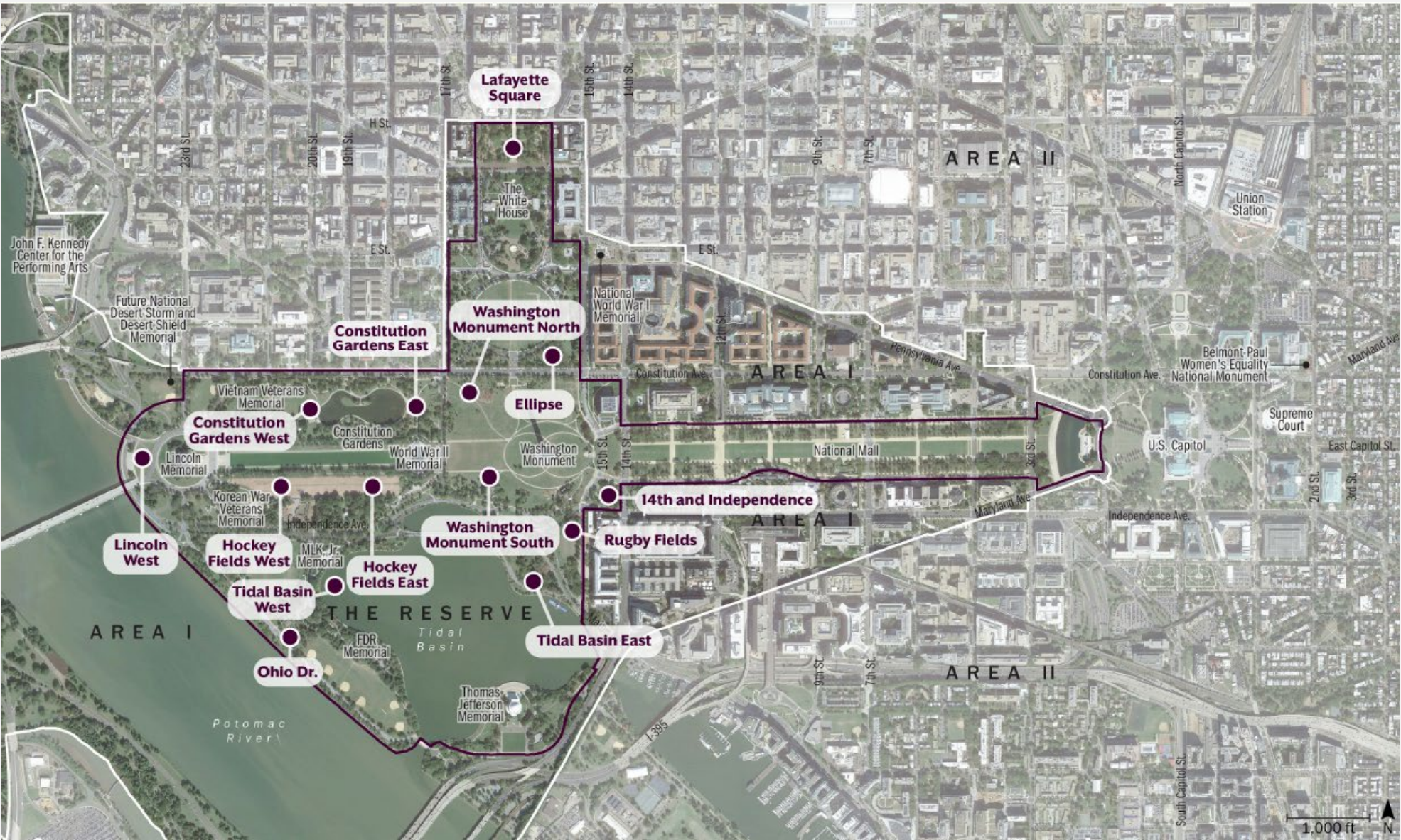
IN ORDER TO ACHIEVE THE GOALS OF THE MONUMENT, THE SITE SHOULD:

- Allow for landscaped garden that provides shade, flowers, seating, and gathering space for multigenerational groups;
- Accommodate true place-making and offer the opportunity to allow women's stories to be woven into the monumental fabric on the National Mall;
- Allow visitors to safely visit and participate in programming during the day and at night;
- Accommodate public programming, including discussions, commemorations, concerts, group tours, and ceremonies;
- Facilitate a transformative experience for all visitors, but especially school groups, multi-generational families, and civic organizations; and
- Provide the ability to interact with, and move through, the memorial.

Site Selection Criteria

SITE SELECTION CRITERIA	DESCRIPTION
Program Suitability	The site should accommodate a landscaped design, including commemorative features, that tell the story of the women's suffrage movement from a diversity of perspectives. The site should be bright and inviting. The site must be large enough to effectively accommodate the scope and scale of the story the monument will tell and welcome the high number of visitors expected.
Integration into Monumental Core	The site should be integrated into, and in conversation with, memorials that highlight founding constitutional history and democratic ideals of our Republic.
Thematic Nexus	The site should physically and thematically connect to the founding principles and history of the Nation's democracy, while also conceptually bringing those ideas into modern times.
Addition to Washington, D.C.'s Commemorative Landscape	The placement of the monument should add to the commemorative fabric of Washington, D.C., invite visitors to better understand our Nation's democracy, and broaden the telling of our country's rich and diverse history without removing or diminishing established memorials.
Implementation Coordination	Allow for collaboration with other site stakeholders and be independent of other plans for the monument site that could substantially delay implementation.
Infrastructure	The site should require minimal new infrastructure, such as roadway improvements or utility extensions.
Safety & Security	The site should enable a welcome, celebratory, and safe experience, with special attention to families, school groups, and pedestrians.
Site Access	The public should be able to continually access the site, except for related special events. The site should not be closed off regularly due to security requirements.
Accessibility & Proximity to Transit	The site should be within a 20-minute walk of a Metrorail station. The site should be accessible to pedestrians, transit (tour buses, city buses, and Metrorail), and visitors to the Nation's Capital.
Support Facilities	The site should be in proximity to support facilities, such as restrooms, food service, and event space.

Initial Range of Potential Sites in the Reserve

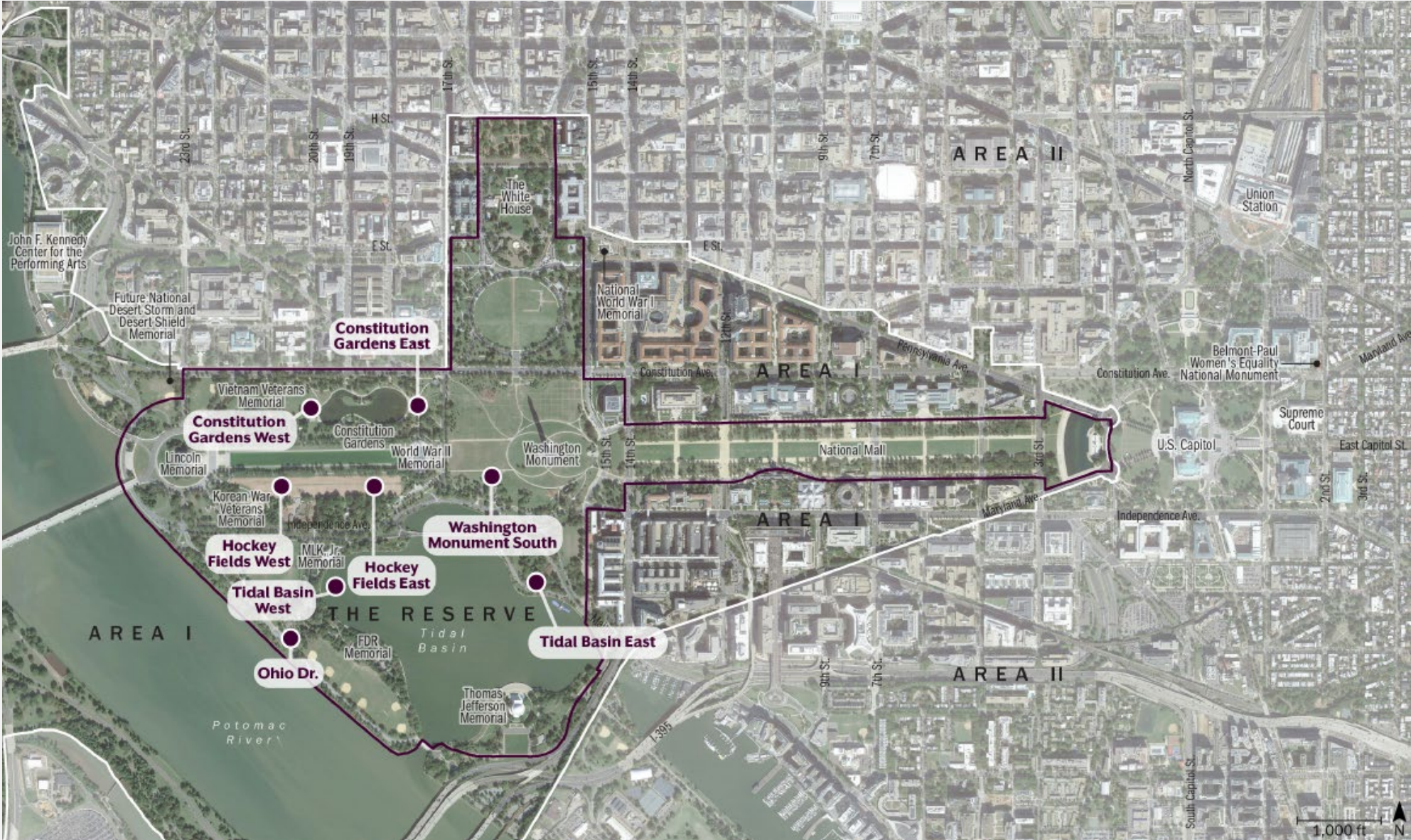


Initial Range of Potential Sites in the Reserve

SITE	PROGRAM SUITABILITY	THEMATIC NEXUS	SITE ACCESS	ADDITION TO D.C. COMMEMORATIVE LANDSCAPE	INTEGRATION INTO MONUMENTAL CORE	IMPLEMENTATION COORDINATION	NEW INFRASTRUCTURE REQUIREMENTS	SAFETY AND SECURITY	ACCESSIBILITY AND PROXIMITY TO TRANSIT	SUPPORT FACILITIES
Constitution Gardens West	●	●	●	●	●	●	●	●	◐	●
Constitution Gardens East	●	●	●	●	●	◐	●	●	◐	●
Hockey Fields East	●	◐	●	●	●	●	●	●	◐	◐
Washington Monument South	●	◐	●	◐	●	◐	●	●	◐	●
Tidal Basin East	◐	◐	●	◐	●	◐	○	○	◐	◐
Tidal Basin West	◐	◐	●	◐	●	◐	○	◐	○	◐
Ohio Drive	◐	○	●	○	○	●	●	●	○	○
Hockey Fields West	●	◐	●	◐	◐	●	●	●	●	◐
Washington Monument North	◐	◐	●	◐	●	◐	◐	●	◐	●
Ellipse	◐	◐	○	◐	◐	◐	●	●	◐	◐
Rugby Fields	◐	○	●	◐	◐	○	●	◐	●	◐
Lafayette Square	○	◐	◐	◐	◐	◐	●	●	●	◐
14th and Independence	◐	◐	●	◐	○	○	○	○	●	◐
Lincoln West	○	◐	●	◐	○	◐	◐	○	◐	◐

KEY + SUGGESTED RATINGS ● Site Would Fully Provide ◐ Site Would Partially Provide ○ Site Would Not Provide

Top Eight Sites for Consideration



Top Eight Sites for Consideration

Hockey Fields West

- Provides clear visibility of Washington Monument;
- Connects to D.C. War Memorial, which commemorates an event that played a significant role in advancing the U.S. women's suffrage movement;
- Offers open and expansive area for program; and
- Presents site challenges due to close proximity to U.S. Park Police Horse Stables and Korean War Veterans Memorial.



Top Eight Sites for Consideration

Hockey Fields West



View looking south towards U.S. Park Police Horse Stables



View looking west towards Lincoln Memorial and Korean Veterans War Memorial



View looking east towards Washington Monument

Top Eight Sites for Consideration

Ohio Drive

- Extends commemoration south towards the Potomac River;
- Presents challenges in commemorative planning due to constraints posed by the established commemorative tree grove; and
- Lacks clear thematic connections.



Top Eight Sites for Consideration

Ohio Drive



View looking northeast from Ohio Drive



View looking south from West Basin Drive



View looking east from the intersection of Ohio Drive and West Basin Drive

Top Eight Sites for Consideration

Tidal Basin West

- Introduces women among national leaders including Thomas Jefferson, Franklin Roosevelt, and Martin Luther King, Jr.;
- Places monument adjacent to White House-Thomas Jefferson Memorial View Corridor;
- Provides waterfront setting; and
- Requires large-scale capital improvements outside the scope of memorial sponsor capacity.



Top Eight Sites for Consideration

Tidal Basin West



View looking southeast toward the Jefferson Memorial



View looking east from East Basin Drive



View looking north toward the Martin Luther King, Jr. Memorial

Top Eight Sites for Consideration

Tidal Basin East

- Introduces women among historic national leaders including Thomas Jefferson, Franklin Roosevelt, and Martin Luther King, Jr.;
- Places monument adjacent to White House--Thomas Jefferson Memorial view corridor;
- Provides waterfront setting; and
- Requires large-scale capital improvements outside the scope of memorial sponsor capacity.



Top Eight Sites for Consideration

Tidal Basin East



View looking southeast with the parking lot on the left side

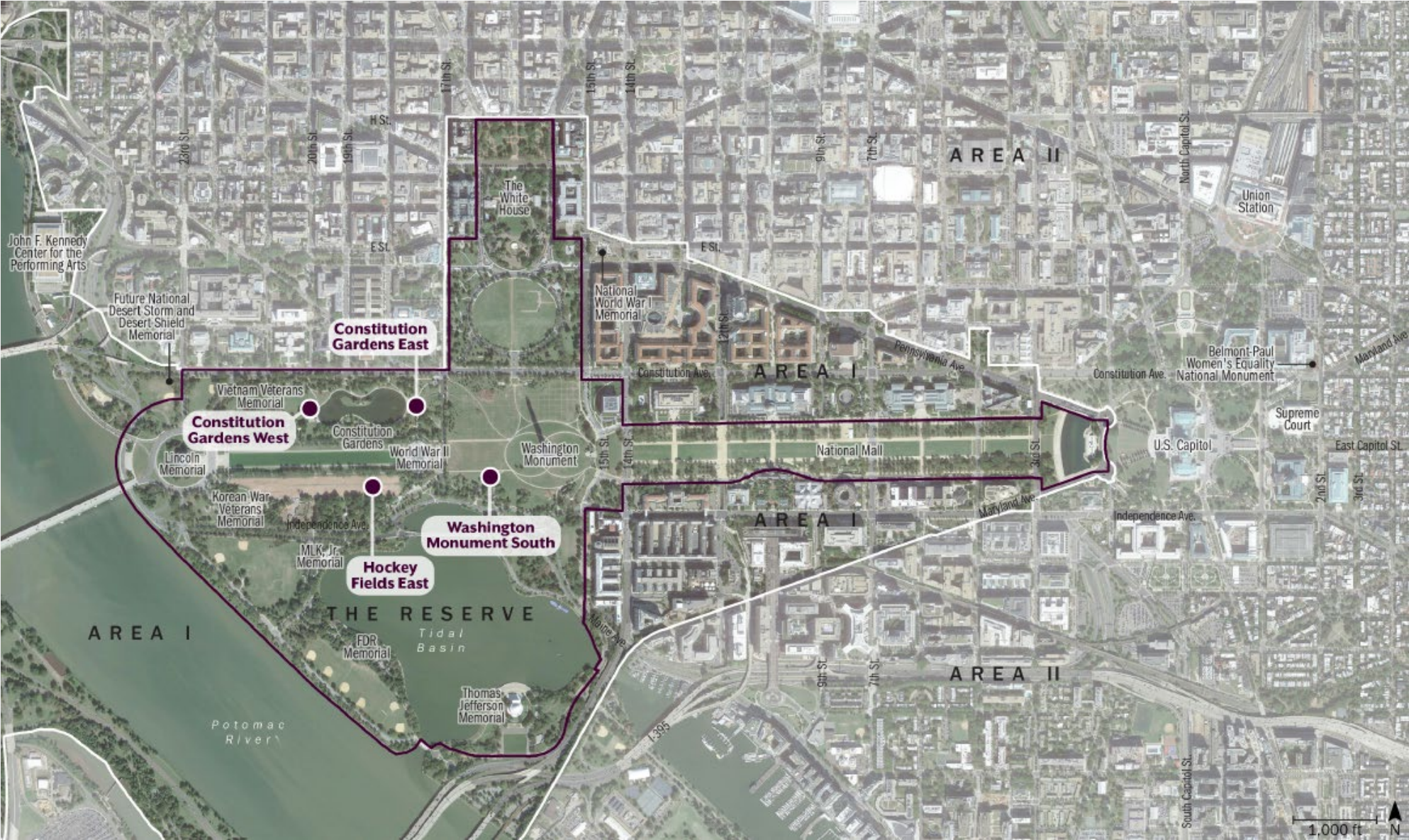


View looking south across the Tidal Basin towards the Jefferson Memorial



View looking southeast towards Ohio Drive/East Basin Drive

Final Four Sites for Analysis



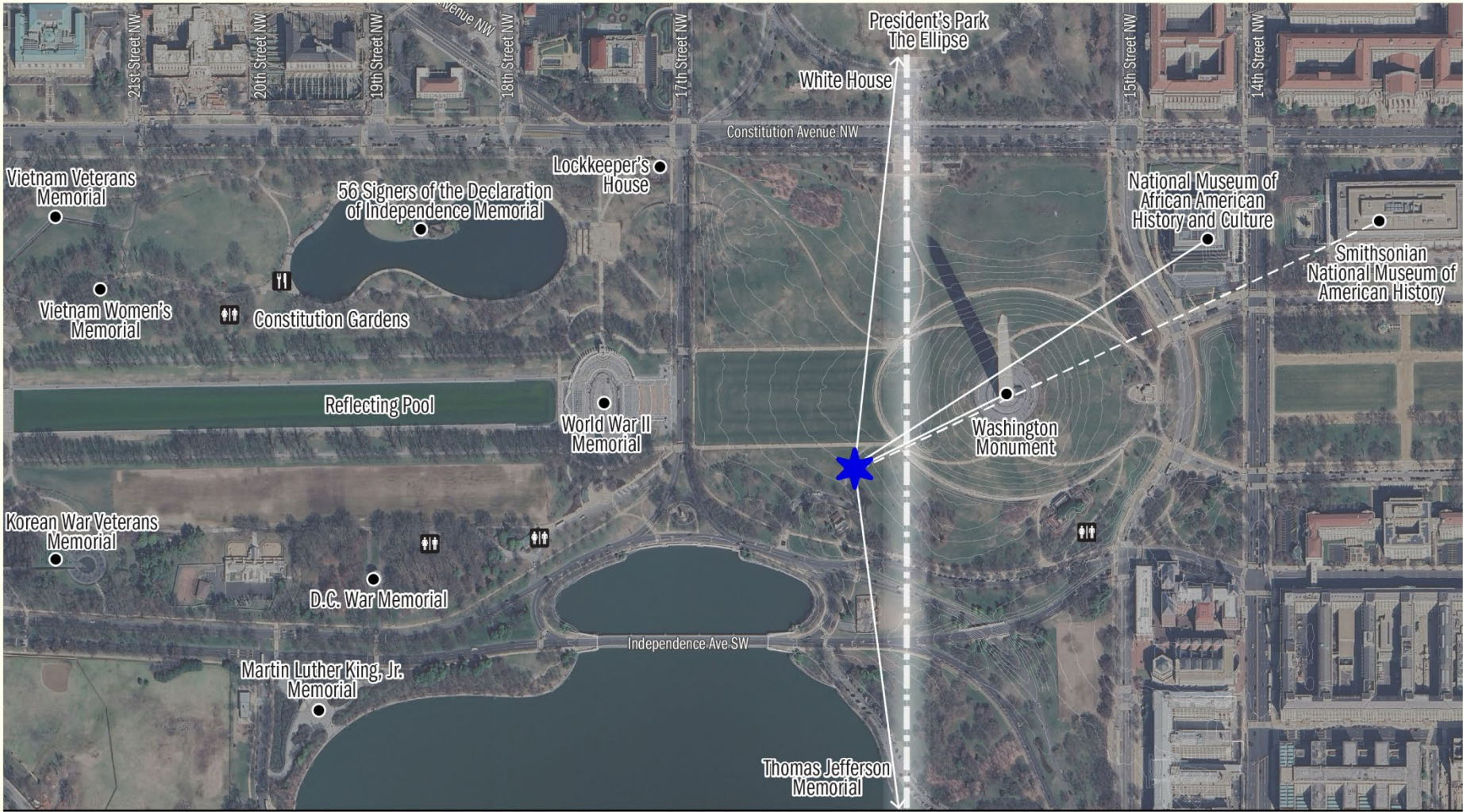
Final Four Sites for Analysis

National Mall Commemorative Landscape



Final Four Sites for Analysis: Washington Monument South

WASHINGTON MONUMENT SOUTH Context

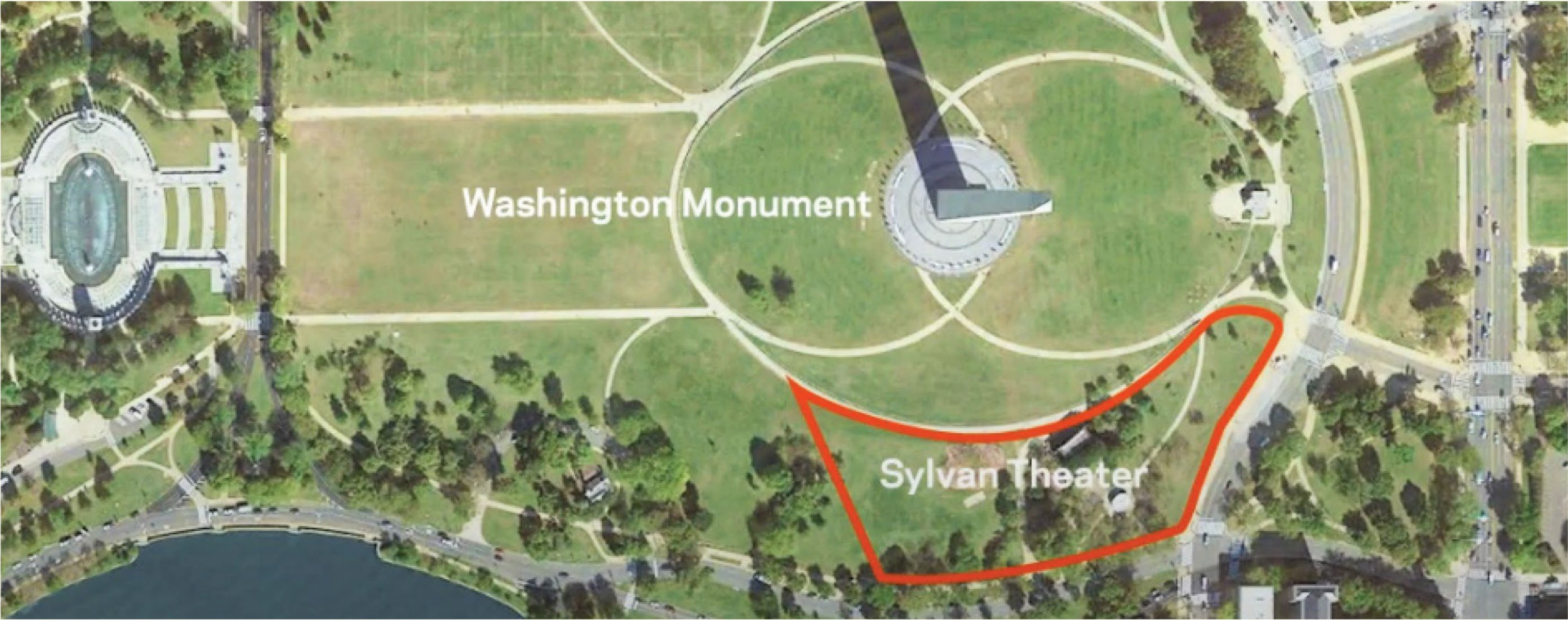


-  Commemorative Site Area
-  White House - Thomas Jefferson Memorial View Corridor
-  Visible Thematic Connection
-  Contextual Thematic Connection
-  Public Restroom
-  Refreshment Kiosk



Final Four Sites for Analysis: Washington Monument South

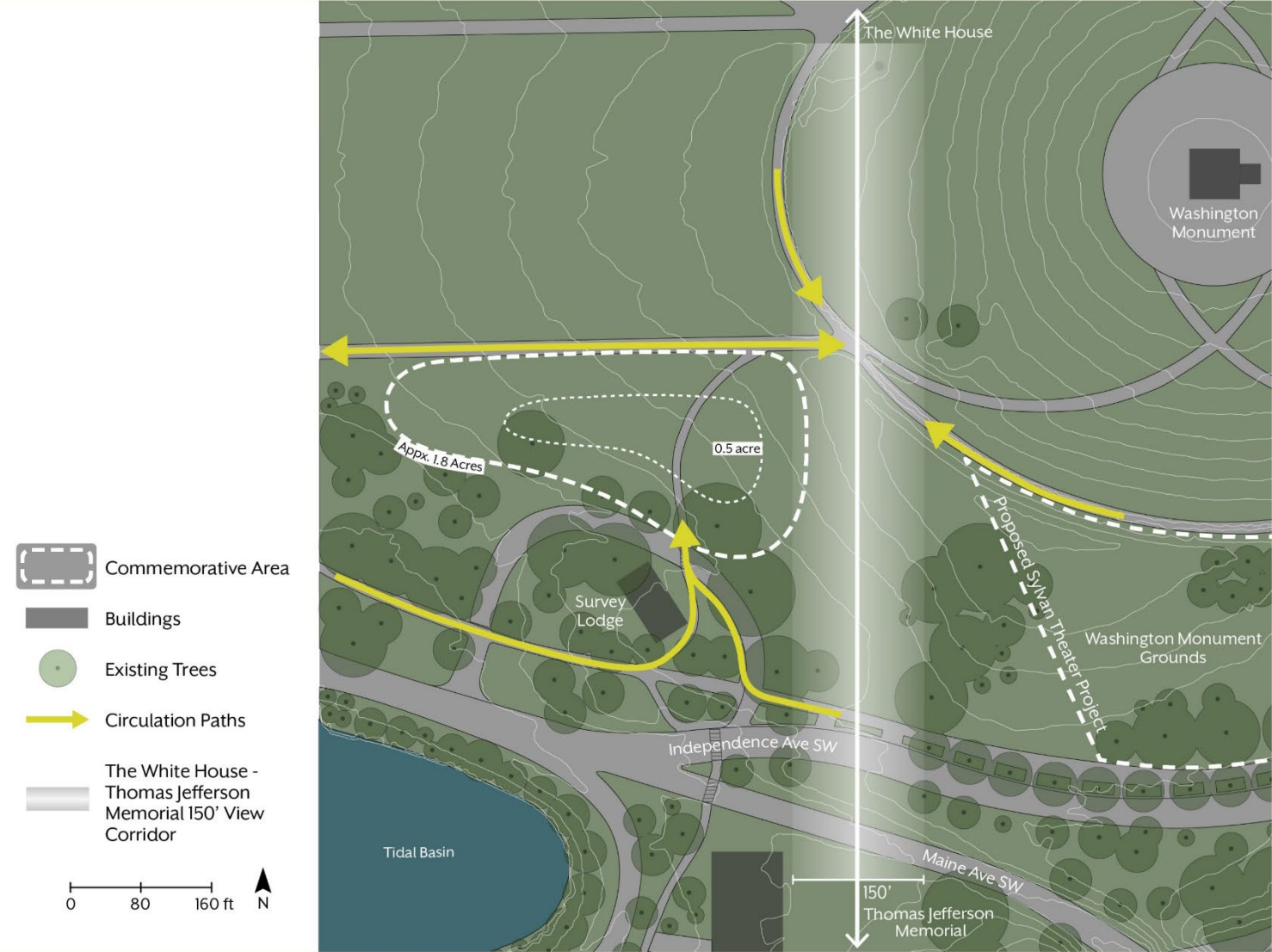
Proposed Sylvan Theater Improvement Area



Final Four Sites for Analysis: Washington Monument South

WASHINGTON MONUMENT SOUTH

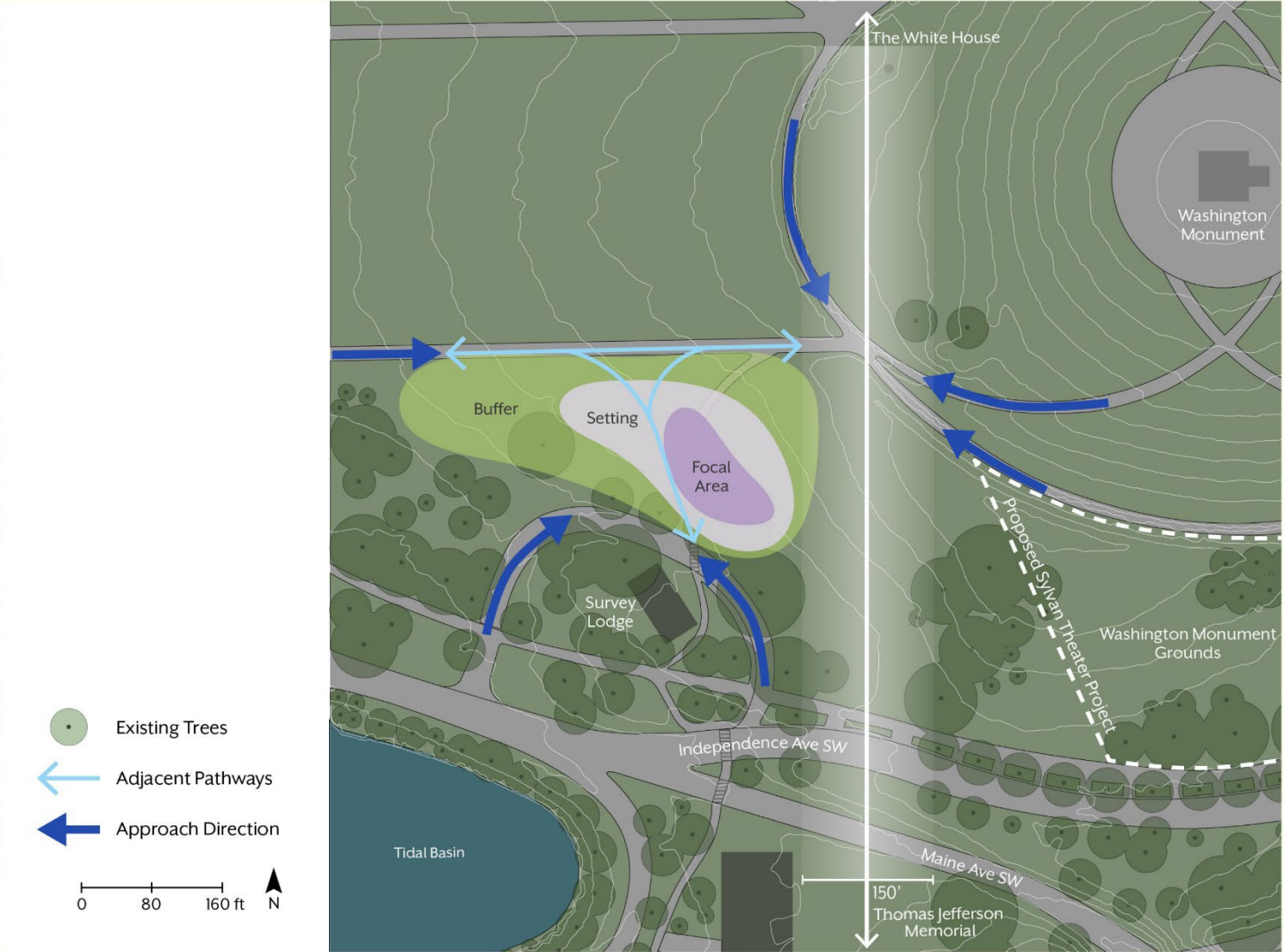
Site Analysis



Final Four Sites for Analysis: Washington Monument South

WASHINGTON MONUMENT SOUTH

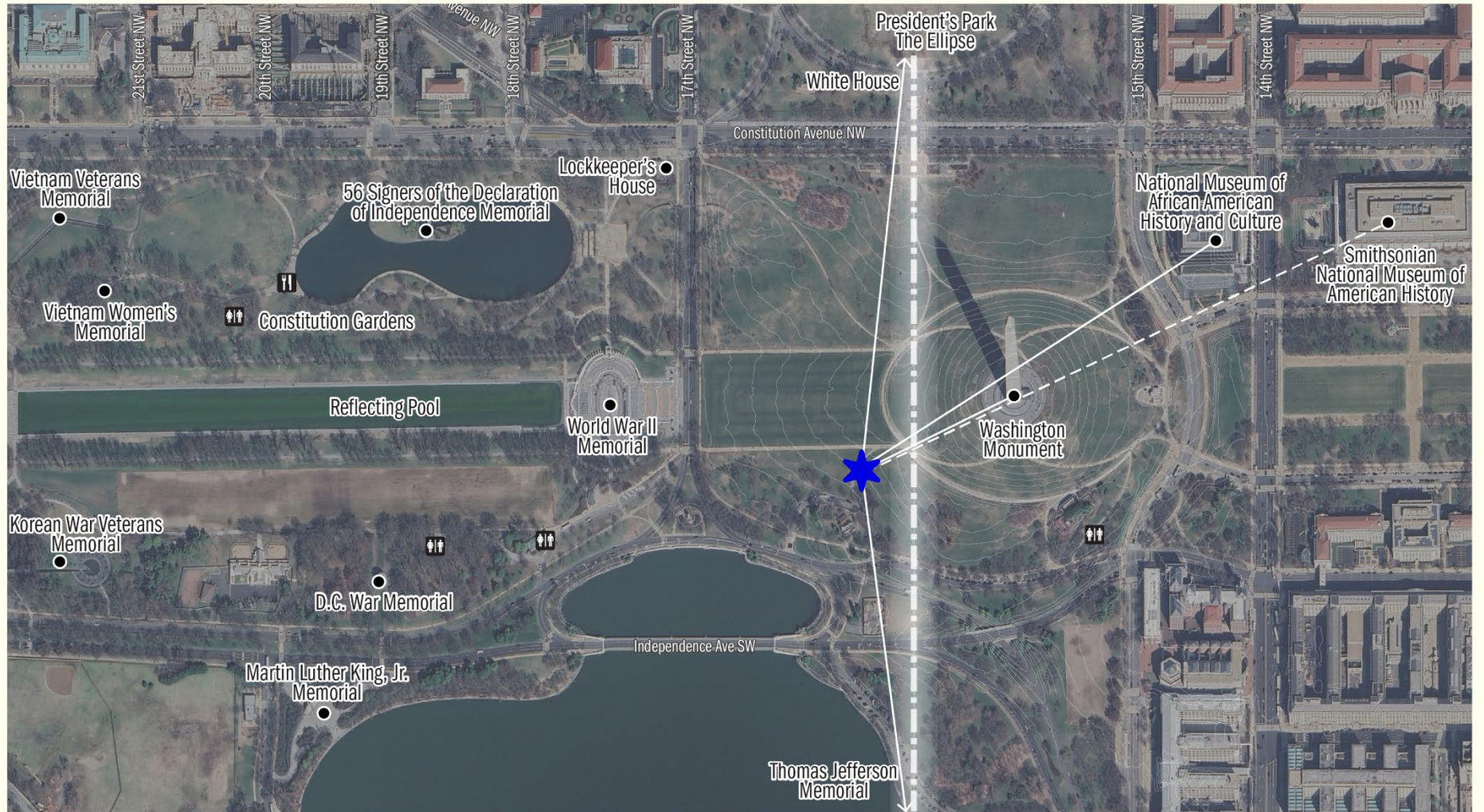
Potential Design Approach



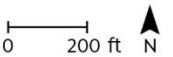
Final Four Sites for Analysis: Hockey Fields East

WASHINGTON MONUMENT SOUTH

Context

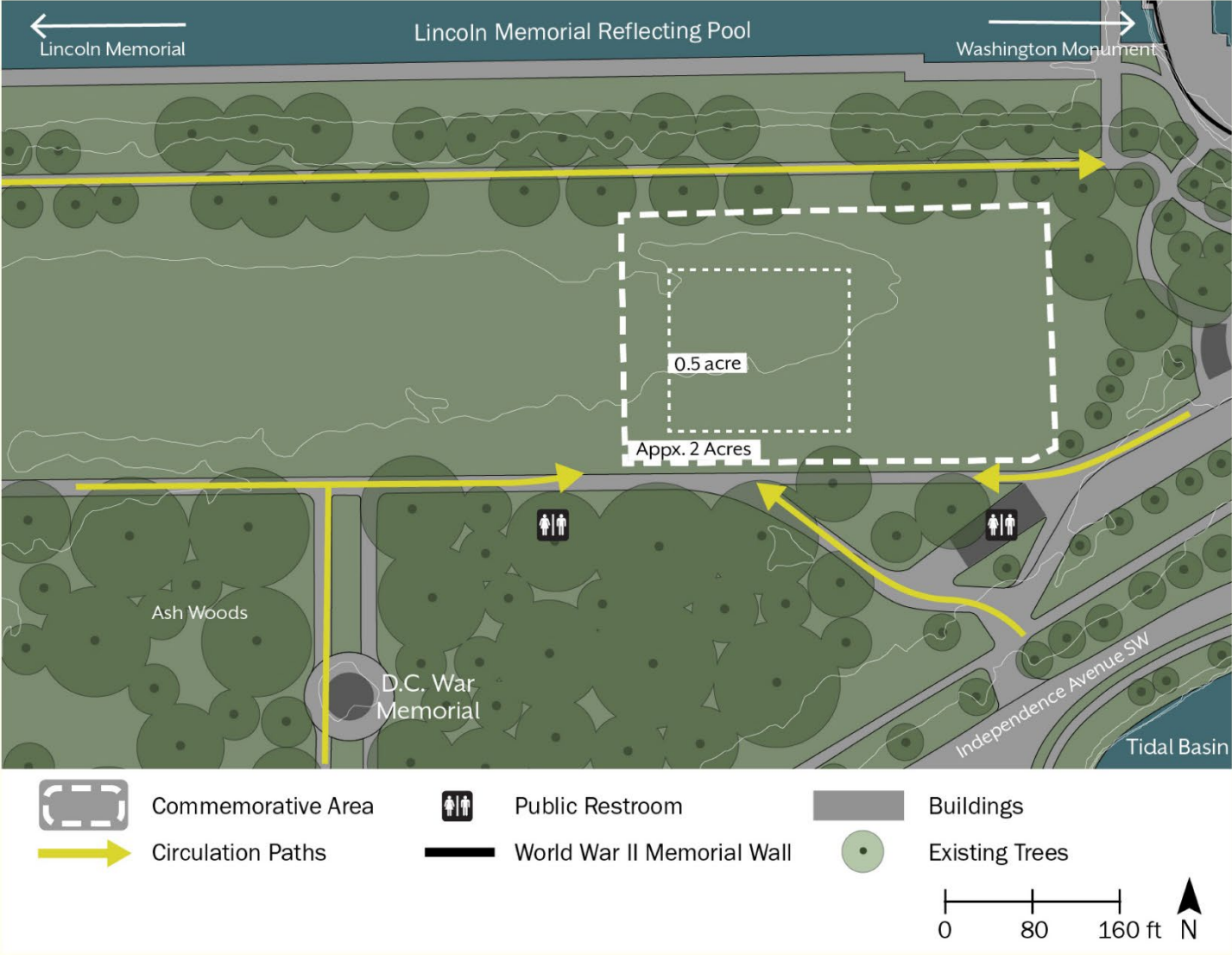


-  Commemorative Site Area
-  White House - Thomas Jefferson Memorial View Corridor
-  Visible Thematic Connection
-  Contextual Thematic Connection
-  Public Restroom
-  Refreshment Kiosk



Final Four Sites for Analysis: Hockey Fields East

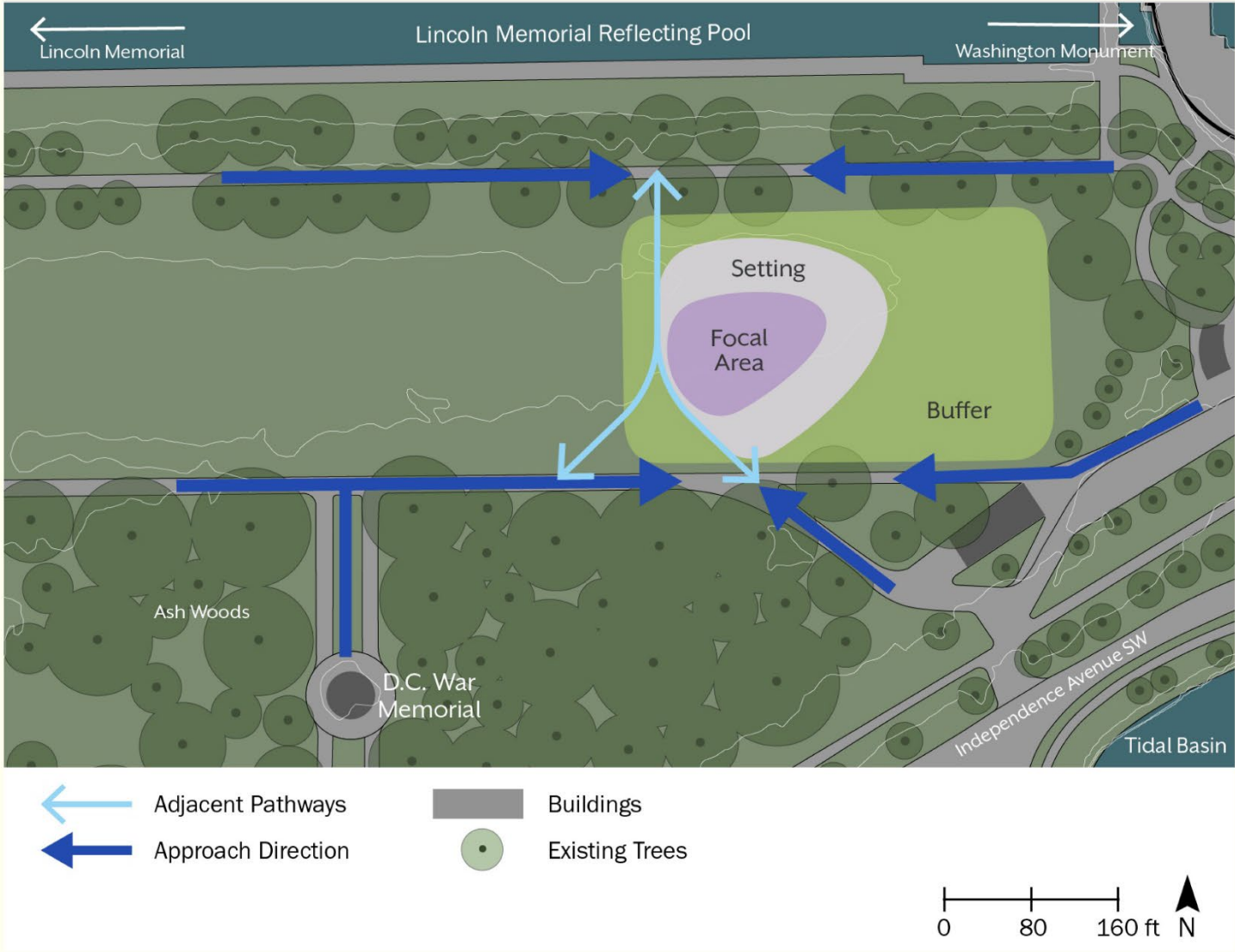
HOCKEY FIELDS EAST
Site Analysis



Final Four Sites for Analysis: Hockey Fields East

HOCKEY FIELDS EAST

Potential Design Approach



Final Four Sites for Analysis: Constitution Gardens



Final Four Sites for Analysis: Constitution Gardens

CONSTITUTION GARDENS

Approved Gardens Lake Project

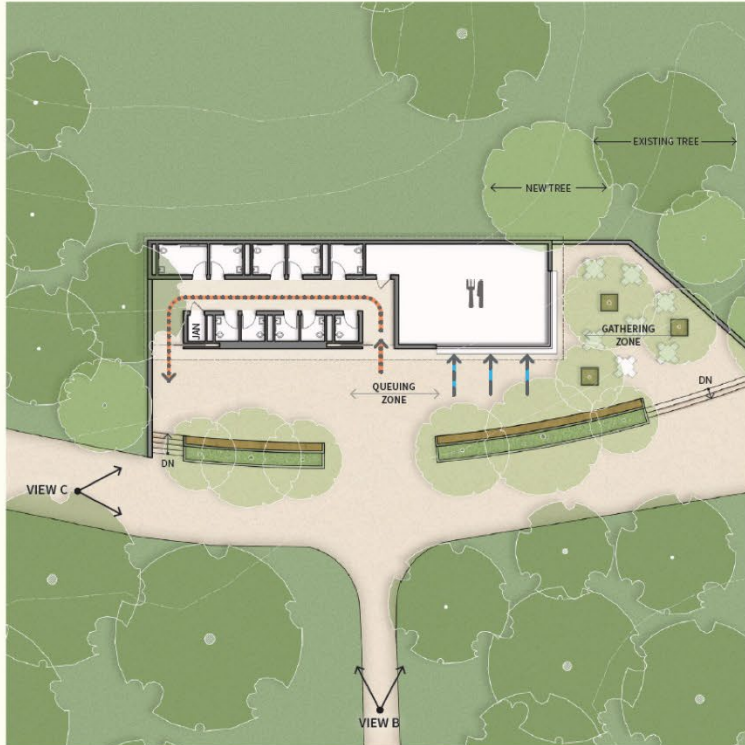


Source: Trust for the National Mall

Final Four Sites for Analysis: Constitution Gardens

CONSTITUTION GARDENS

Ongoing Proposals



Proposed Comfort Station - Plan
Source: NPS



Proposed Comfort Station - Design Rendering
Source: NPS



Design Rendering of Event Plaza at Constitution
Gardens East
Source: Trust for the National Mall

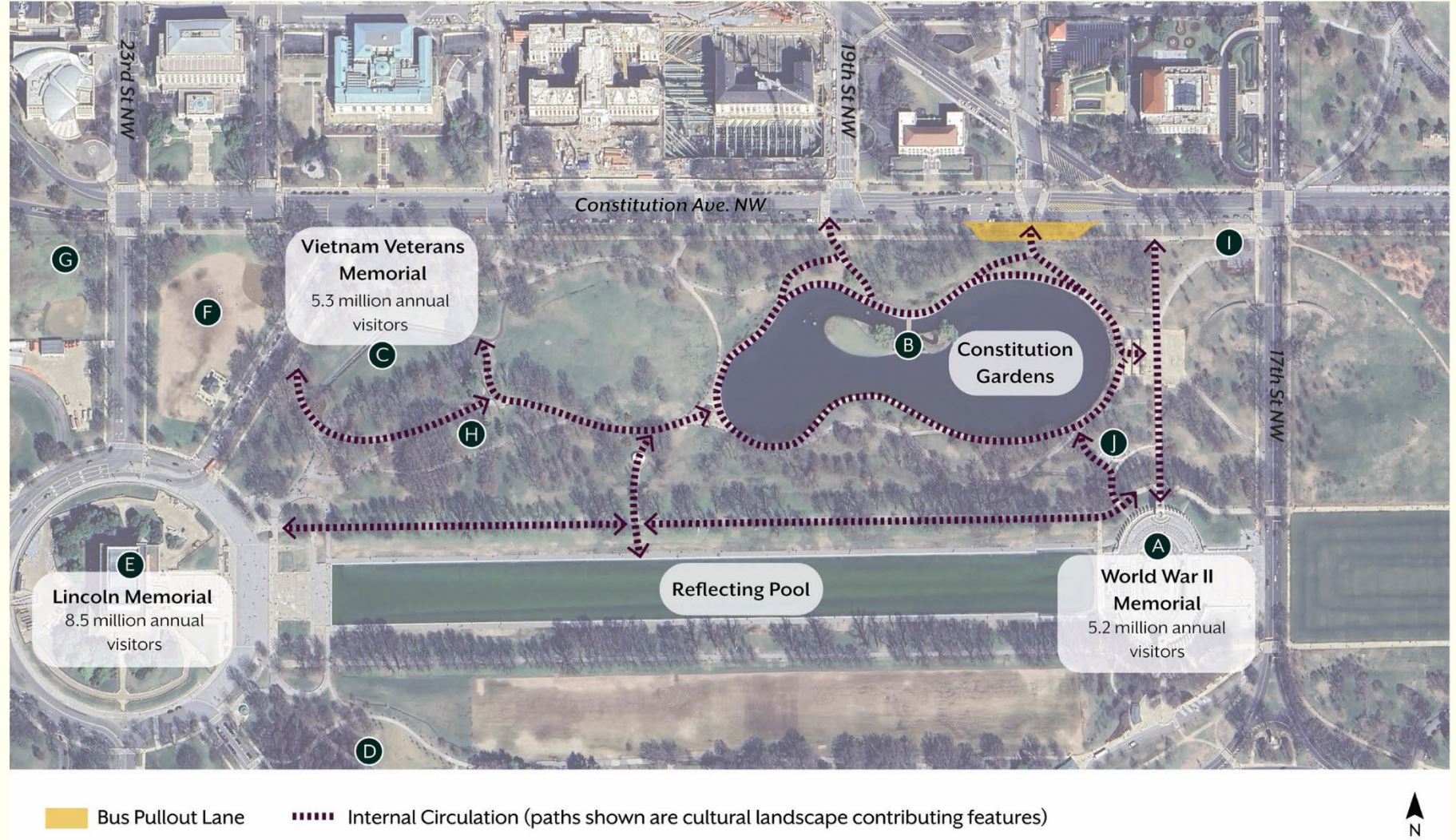
Final Four Sites for Analysis: Constitution Gardens

CONSTITUTION GARDENS

Site Access and Pathway Circulation

Memorials and NPS Historic Building within 0.2 miles of Constitution Gardens:

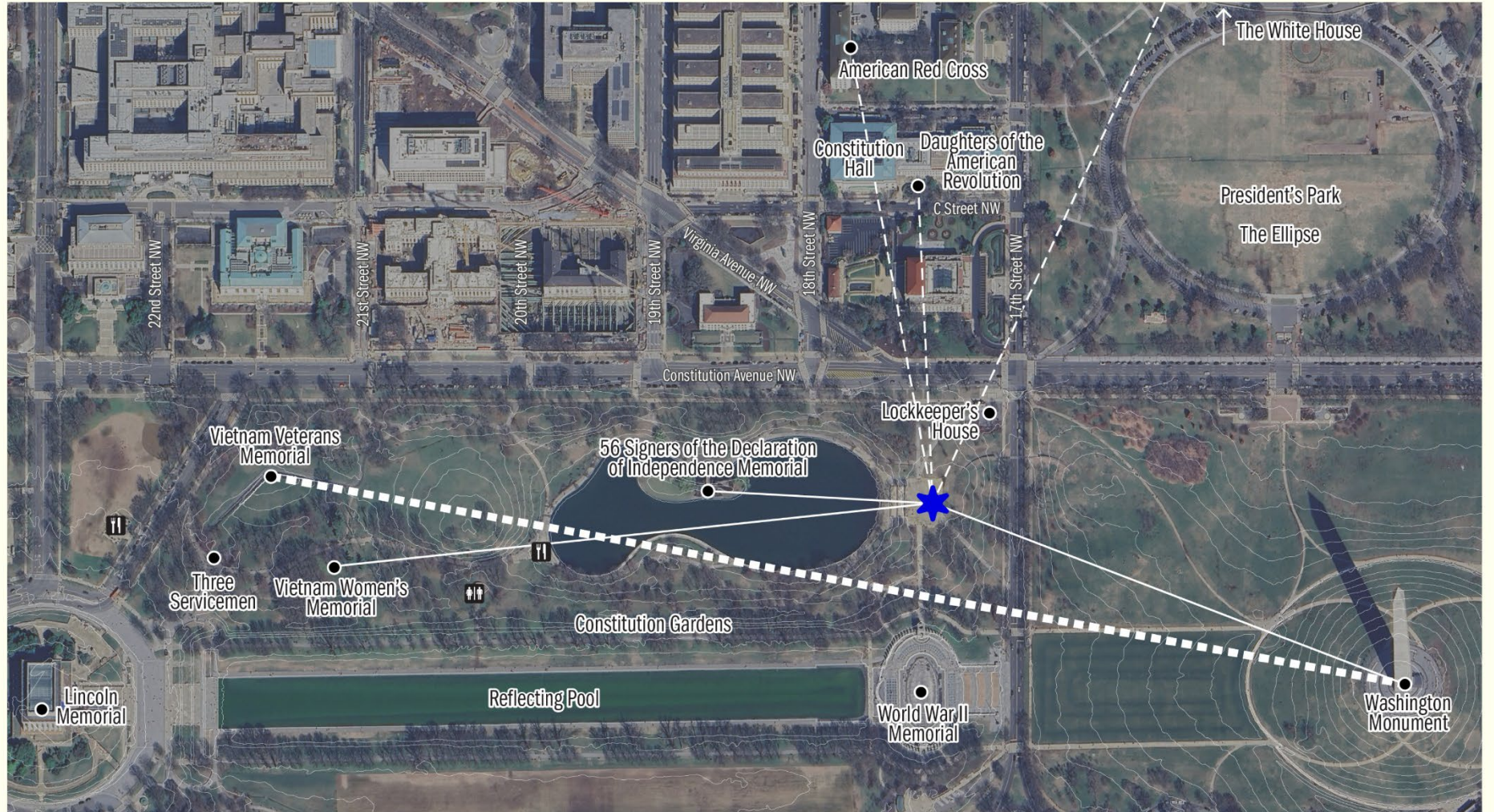
- A. World War II Memorial
- B. Signers of the Declaration of Independence Memorial
- C. Vietnam Veterans Memorial
- D. Korean War Veterans Memorial
- E. Lincoln Memorial
- F. Global War on Terrorism Memorial (Future)
- G. National Desert Shield and Desert Storm Memorial (Under Construction)
- H. Vietnam Women's Memorial
- I. Lockkeeper's House
- J. FDR D-Day Prayer Circle of Remembrance









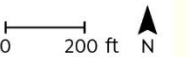
Final Four Sites for Analysis: Constitution Gardens East

CONSTITUTION GARDENS EAST

Context

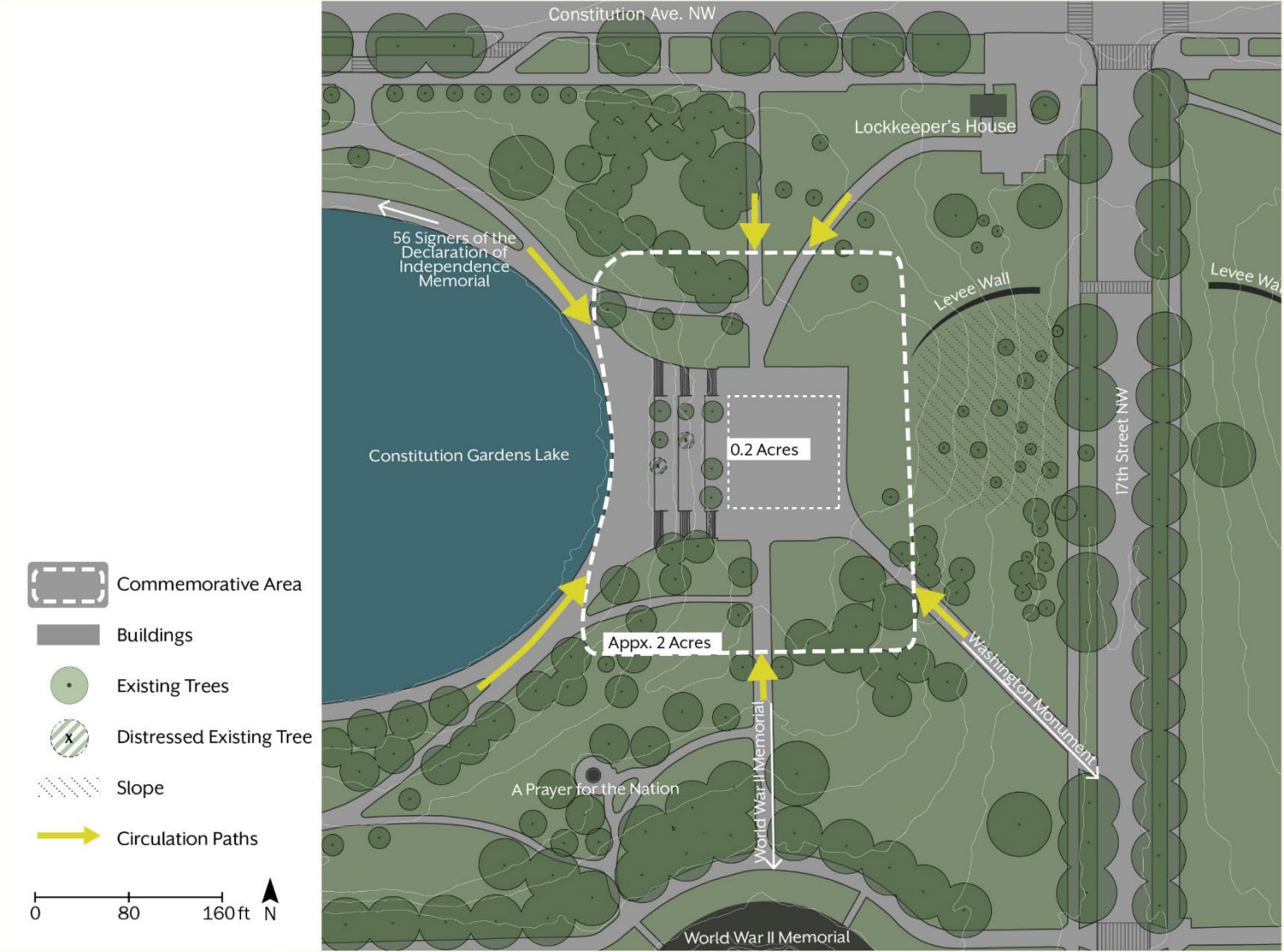


-  Commemorative Site Area
-  Vietnam Veterans Memorial - Washington Monument Axis
-  Visible Thematic Connection
-  Contextual Thematic Connection
-  Public Restroom
-  Refreshment Kiosk



Final Four Sites for Analysis: Constitution Gardens East

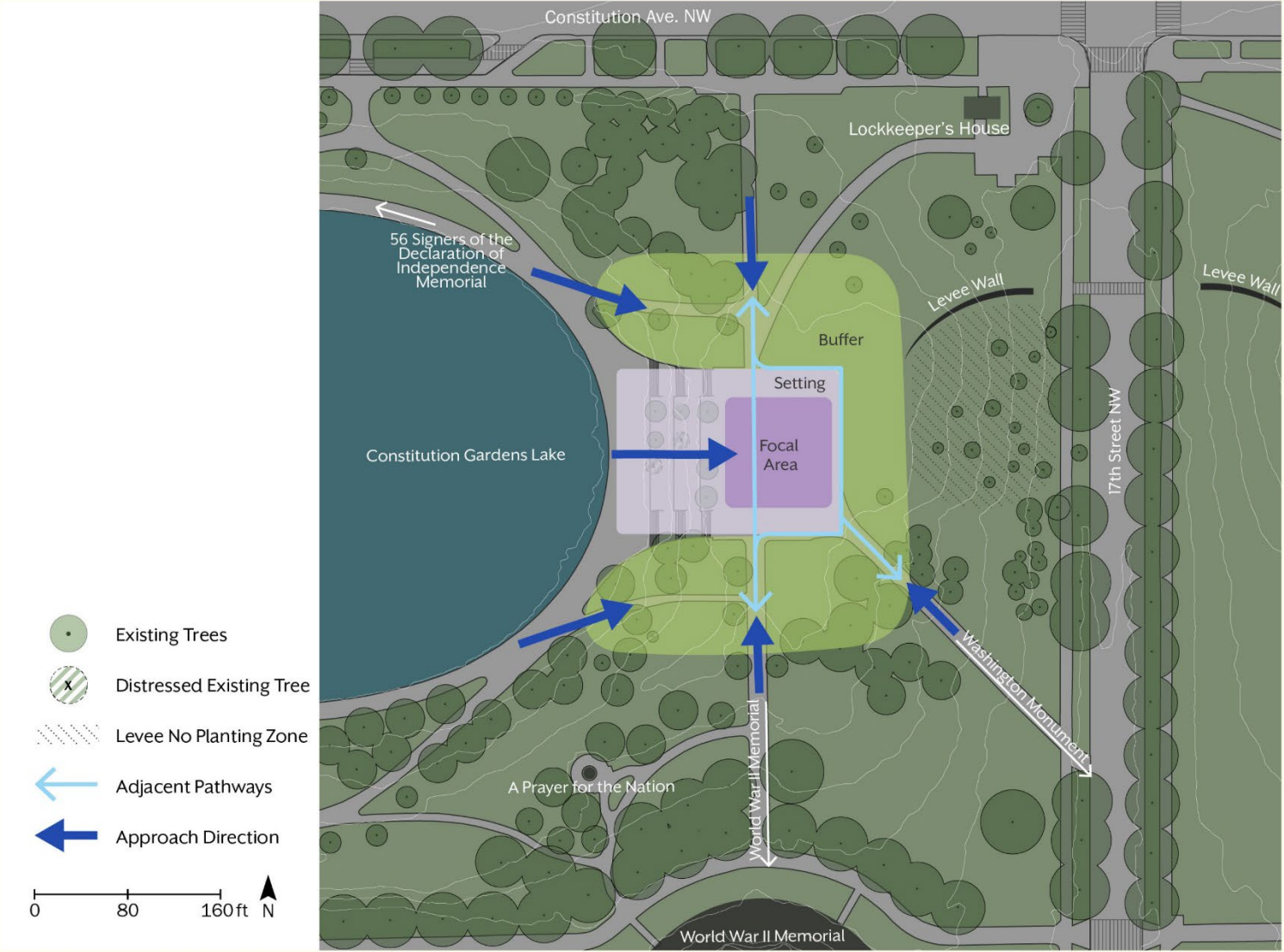
CONSTITUTION GARDENS EAST Site Analysis



Final Four Sites for Analysis: Constitution Gardens East

CONSTITUTION GARDENS EAST

Potential Design Approach



Final Four Sites for Analysis: Constitution Gardens East

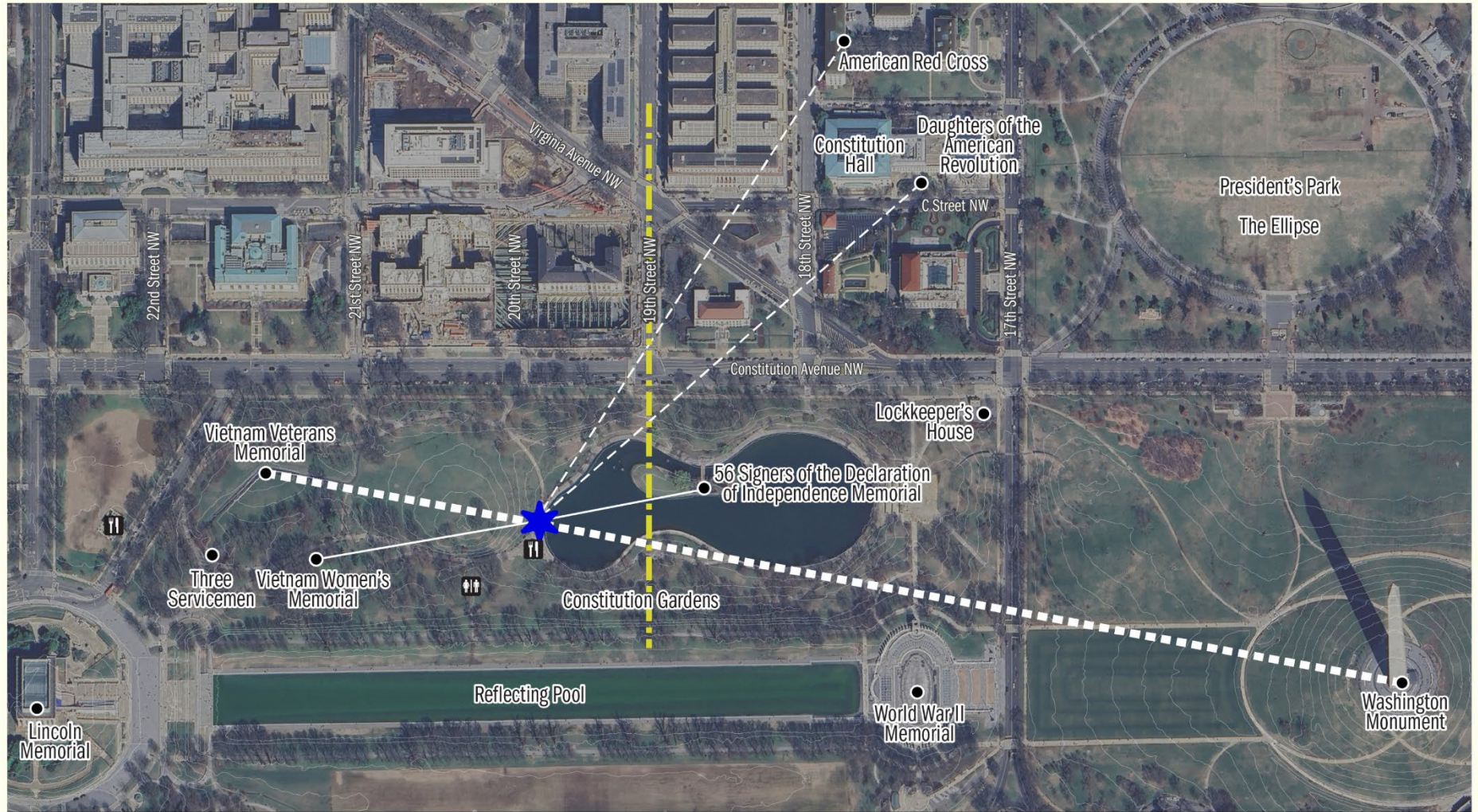
CONSTITUTION GARDENS EAST

Conceptual Overlay of Potential Design Approach

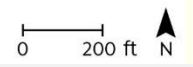


Final Four Sites for Analysis: Constitution Gardens West

CONSTITUTION GARDENS WEST Context

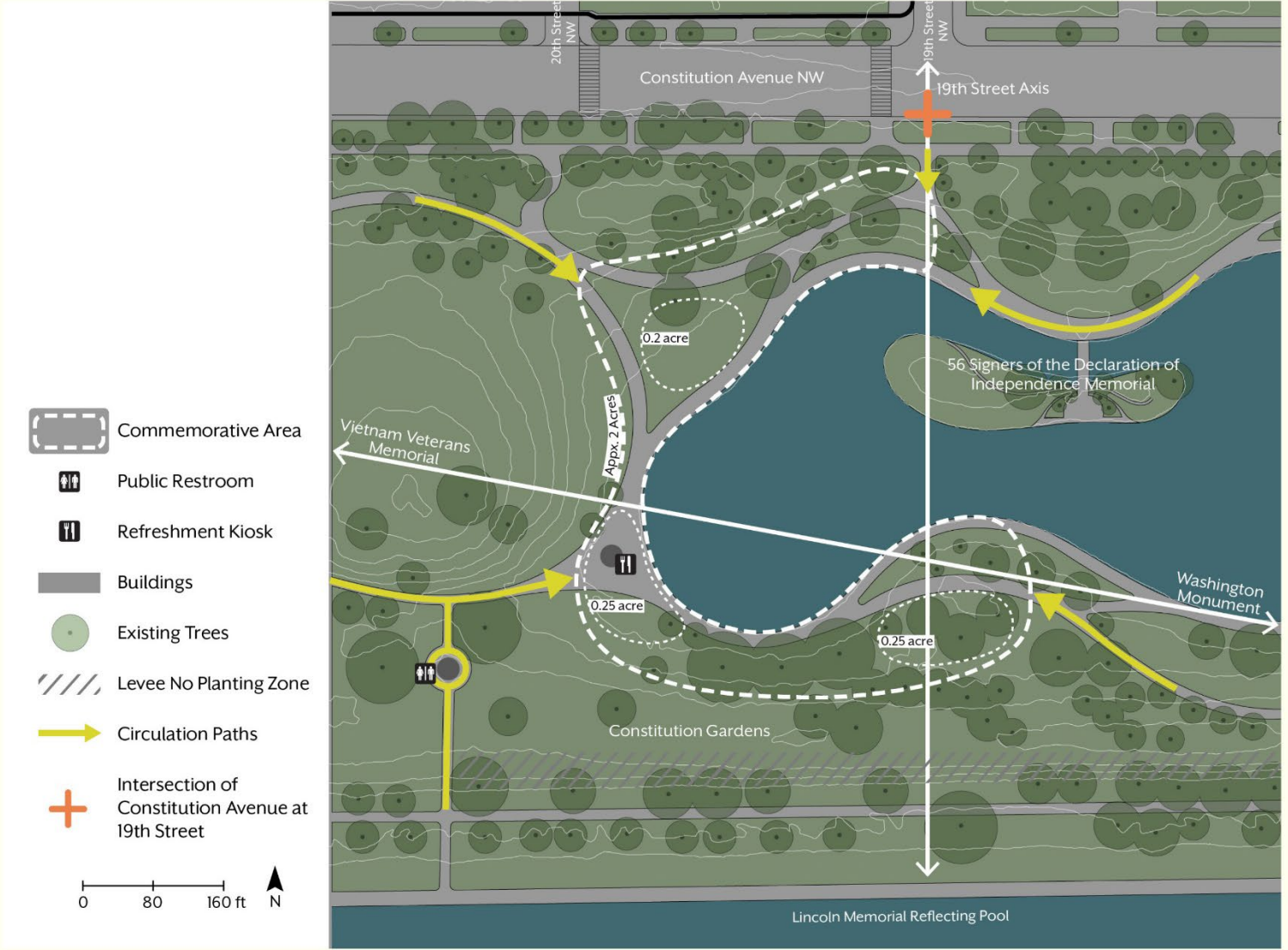


-  Commemorative Site Area
-  19th Street Axis
-  Vietnam Veterans Memorial - Washington Monument Axis
-  Visible Thematic Connection
-  Contextual Thematic Connection
-  Public Restroom
-  Refreshment Kiosk



Final Four Sites for Analysis: Constitution Gardens West

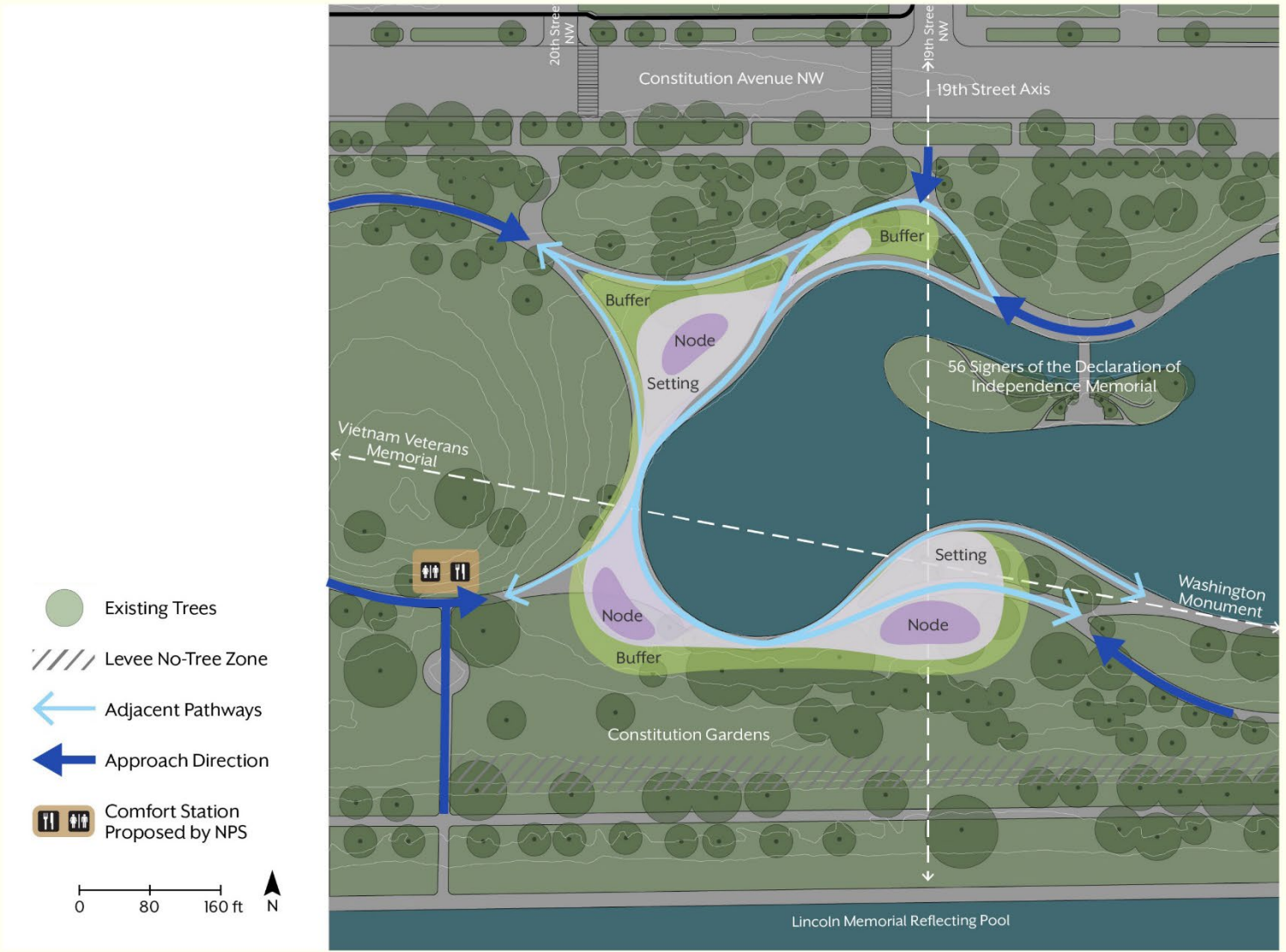
CONSTITUTION GARDENS WEST Site Analysis



Final Four Sites for Analysis: Constitution Gardens West

CONSTITUTION GARDENS WEST

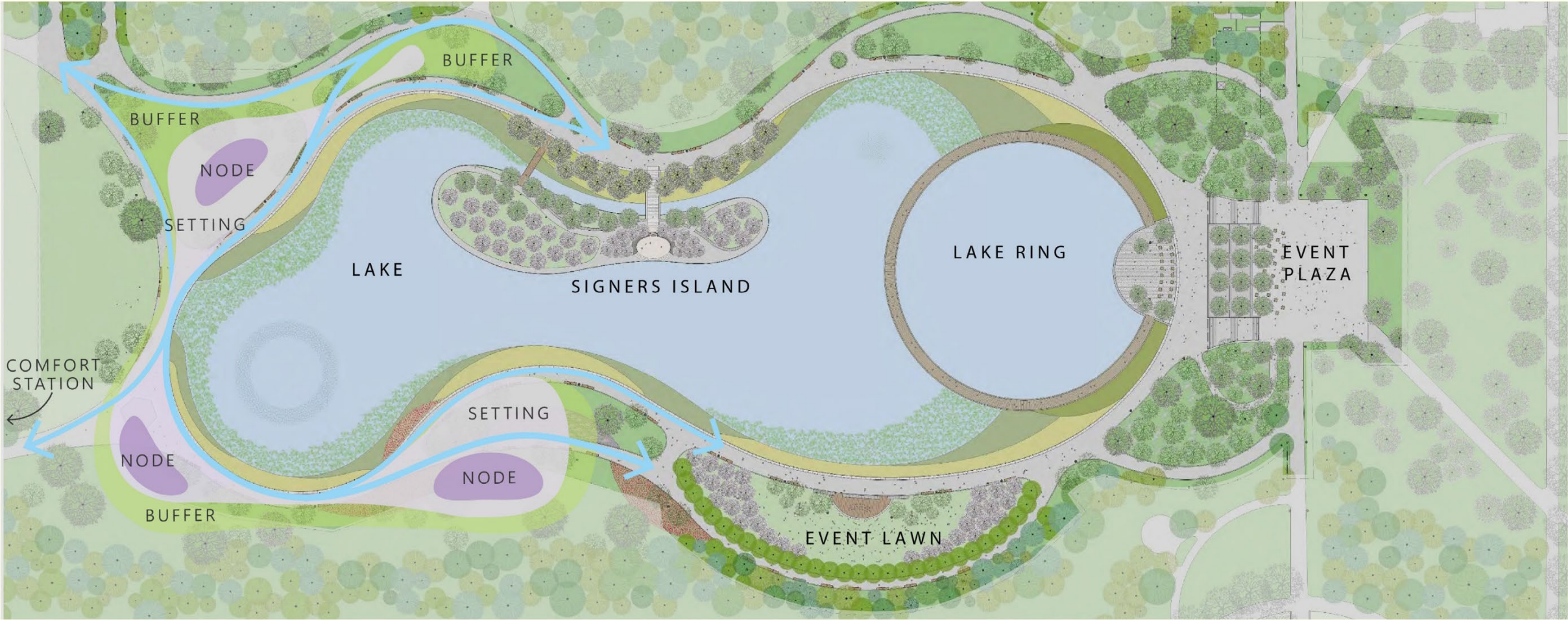
Potential Design Approach



Final Four Sites for Analysis: Constitution Gardens West

CONSTITUTION GARDENS WEST

Conceptual Overlay of Potential Design Approach

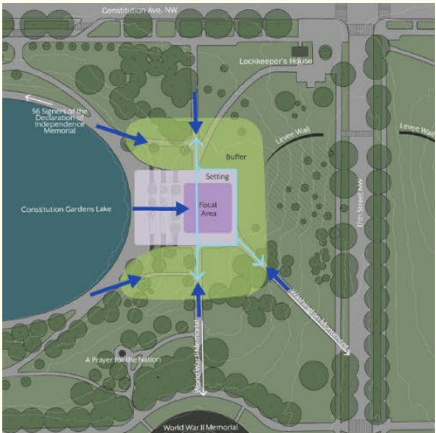


Final Four Sites for Analysis

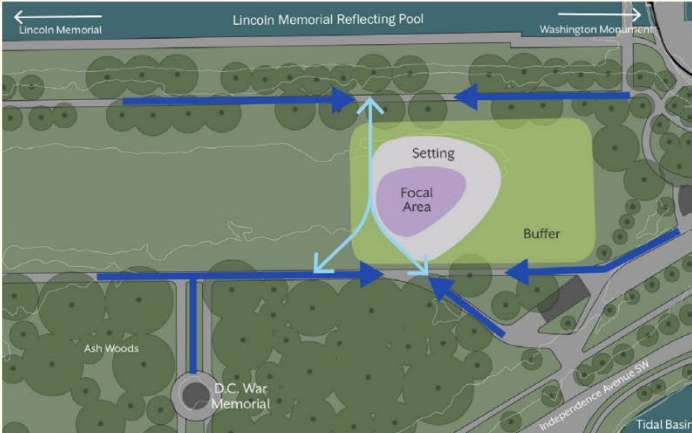
Potential Design Approaches



Constitution Gardens West



Constitution Gardens East



Hockey Fields East



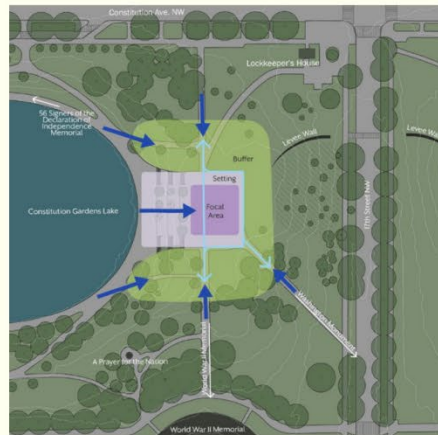
Washington Monument South

Final Four Sites for Analysis

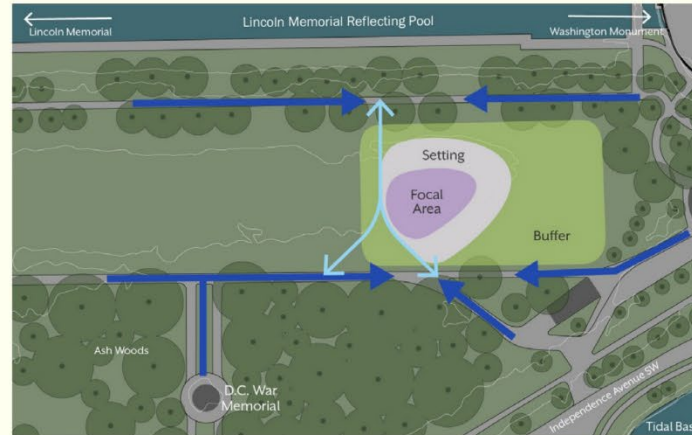
Potential Design Approaches



**Constitution
Gardens West**



**Constitution
Gardens East**



Hockey Fields East



**Washington
Monument South**

Final Four Sites for Analysis

COMPARATIVE ANALYSIS OF THE FINAL FOUR SITES

SITE	OPPORTUNITIES	CONSTRAINTS
Constitution Gardens West	<ul style="list-style-type: none"> Establishes strong thematic connections to the 56 Signers of the Declaration of Independence Memorial, Vietnam Women’s Memorial, and Washington Monument Provides the opportunity to align with strategic fundraising initiatives by the Trust for the National Mall Reinforces the significance of the 19th Amendment due to proximity to the intersection of 19th Street and Constitution Avenue Provides an open, uninterrupted landscape for memorial planning as a result of the proposed comfort station project by NPS, which includes the relocation and combination of the existing restrooms and kiosk 	<ul style="list-style-type: none"> Requires coordination between kiosk relocation, Constitution Gardens rehabilitation, and memorial development timelines
Constitution Gardens East	<ul style="list-style-type: none"> Establishes strong thematic connections to the 56 Signers of the Declaration of Independence Memorial, Vietnam Women’s Memorial, and Washington Monument Features an elevated, central location within an open landscape 	<ul style="list-style-type: none"> Overlaps with future location of approved event plaza under the Gardens Lake Project Limits commemorative site development due to intended future use for events and temporary structures
Hockey Fields East	<ul style="list-style-type: none"> Allows flexibility in planning and design through large open space Offers expansive views and thematic connections to the Washington Monument and D.C. War Memorial 	<ul style="list-style-type: none"> Impacts existing recreation use, which is an important element of the site Eliminates permit fee income currently generated by the park Disrupts the intended character of the commemorative work due to close proximity to restrooms and transit Creates a perceived separation from the monumental core of the National Mall
Washington Monument South	<ul style="list-style-type: none"> Offers Prominent location with high visibility and access Incorporates women into the landscape honoring the Nation’s founding Provides strong transit connections 	<ul style="list-style-type: none"> Limits acceptable treatments due to proposed Sylvan Theater improvements and the 150-ft view corridor between the White House and the Jefferson Memorial, pushing the commemorative site westward toward the Survey Lodge Diminishes the character and essence of the new commemorative work due to the Washington Monument, which features a classically masculine object

Preferred Site: Constitution Gardens West



Recommendation

The Women's Suffrage National Monument Foundation recommends establishing the monument at **Constitution Gardens West**.

As the site of the Women's Suffrage National Monument, Constitution Gardens West would: 1) weave the monument into commemorative thematic connections that best contextualize the story of women's contributions to American democracy; 2) best accommodate the desired program; and 3) best integrate the monument into the existing commemorative landscape of the National Mall.

Pictured: 1776 - Retouching an Old Masterpiece, 1915