

Sculpture Garden Improvements

1000 Constitution Avenue, NW, Washington DC

Approval of Preliminary and Final Site Development and Building Plans

National Gallery of Art

Project Summary

Commission Meeting Date: September 1, 2022

NCPC Review Authority: 40 U.S.C. § 8722(b)(1) and (d)

Applicant Request: Approval of Preliminary and Final Site Development and Building Plans

Session: Consent Calendar

NCPC Review Officer: Lee Webb

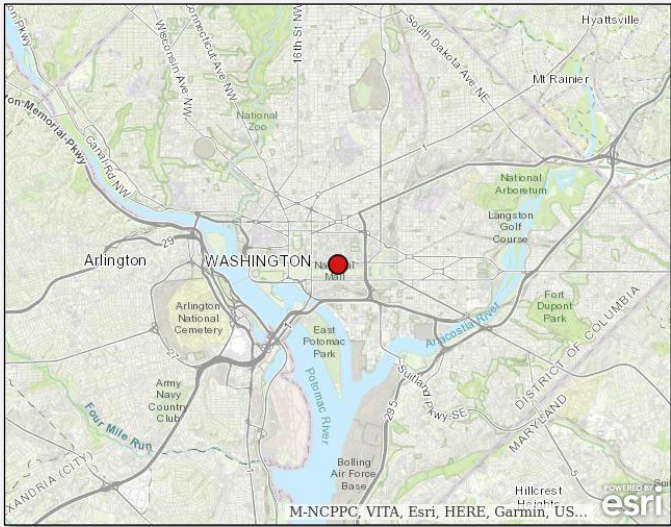
NCPC File Number: 8393

Project Summary:

The National Gallery of Art has submitted an application for preliminary and final site development and building plans for three projects location in NGA's Sculpture Garden, located on the National Mall south of Constitution Avenue. The three projects are as follows:

- 1) Sculpture Garden's secondary paths, benches, and ramp: replace existing gravel on secondary paths with stone paving; modify the number and location of benches and extend new stone paving under all benches; and replacing the existing stair/ramp with a universally accessible full ramp.
- 2) Replace the 26 existing open trash receptables with 12 new closed receptables, called Bigbellies.
- 3) A new retail kiosk: the new kiosk will be installed on the terrace area north of the restaurant/restroom pavilion, to be assembled from materials fabricated off-site. The new kiosk will not require any additional below-grade foundations, and will on top of the terrace stones paving. The dimensions of the kiosk when closed are 8 feet wide, 15 feet long, and 8 feet high. The kiosk's aluminum panels will match the green color of the restaurant pavilion.

Site Location



Location Map

Sculpture Garden Views



1. General view: Looking east along east-west axis



2. General view: Looking south along north-south axis

Sculpture Garden Secondary Gravel Paths Existing



3. Gravel migration at gravel-path/
stone path intersection



4. Gravel migration along gravel-path/
stone path intersection

Sculpture Garden Secondary Gravel Paths Existing

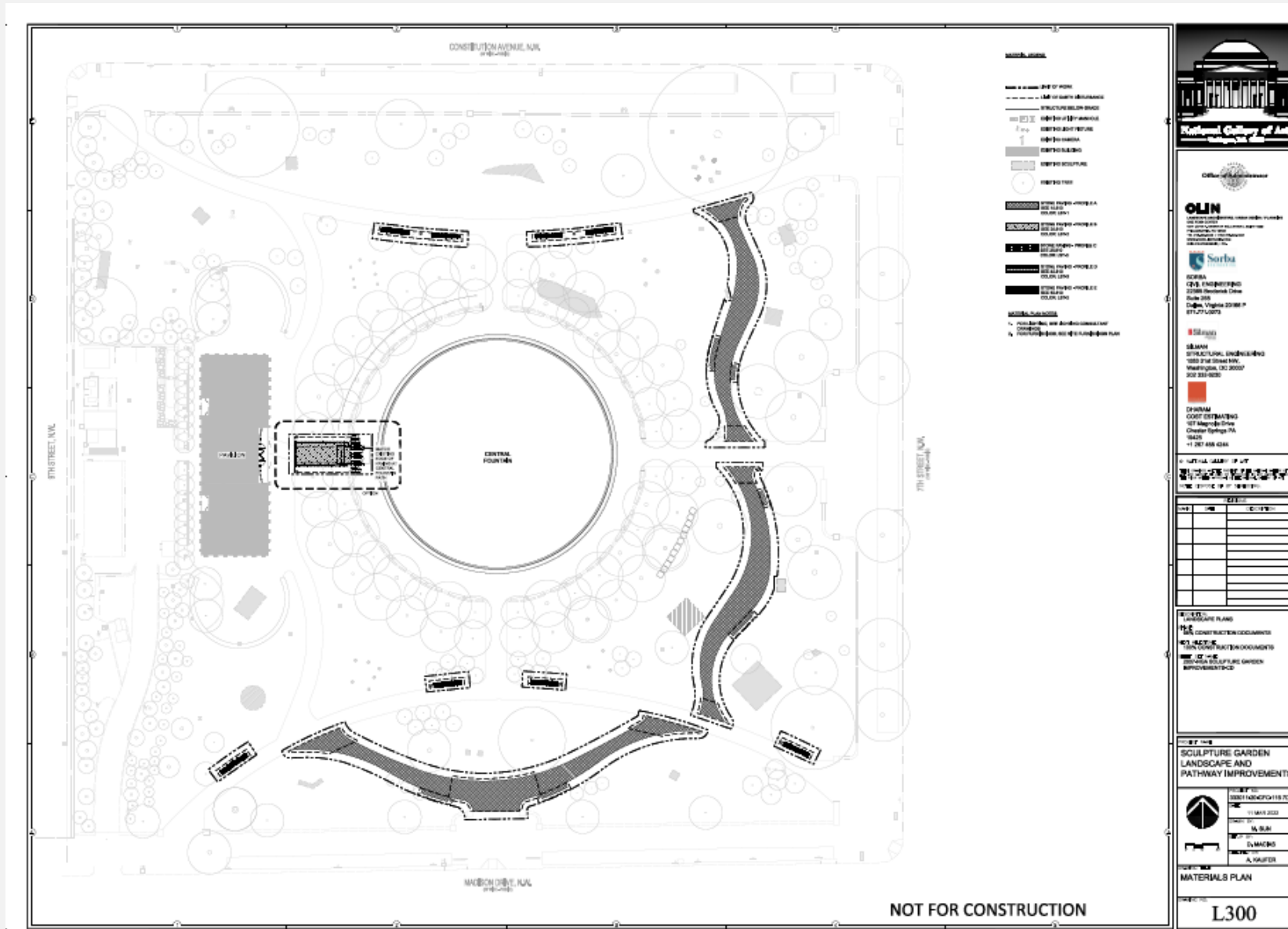


5. Gravel erosion along path

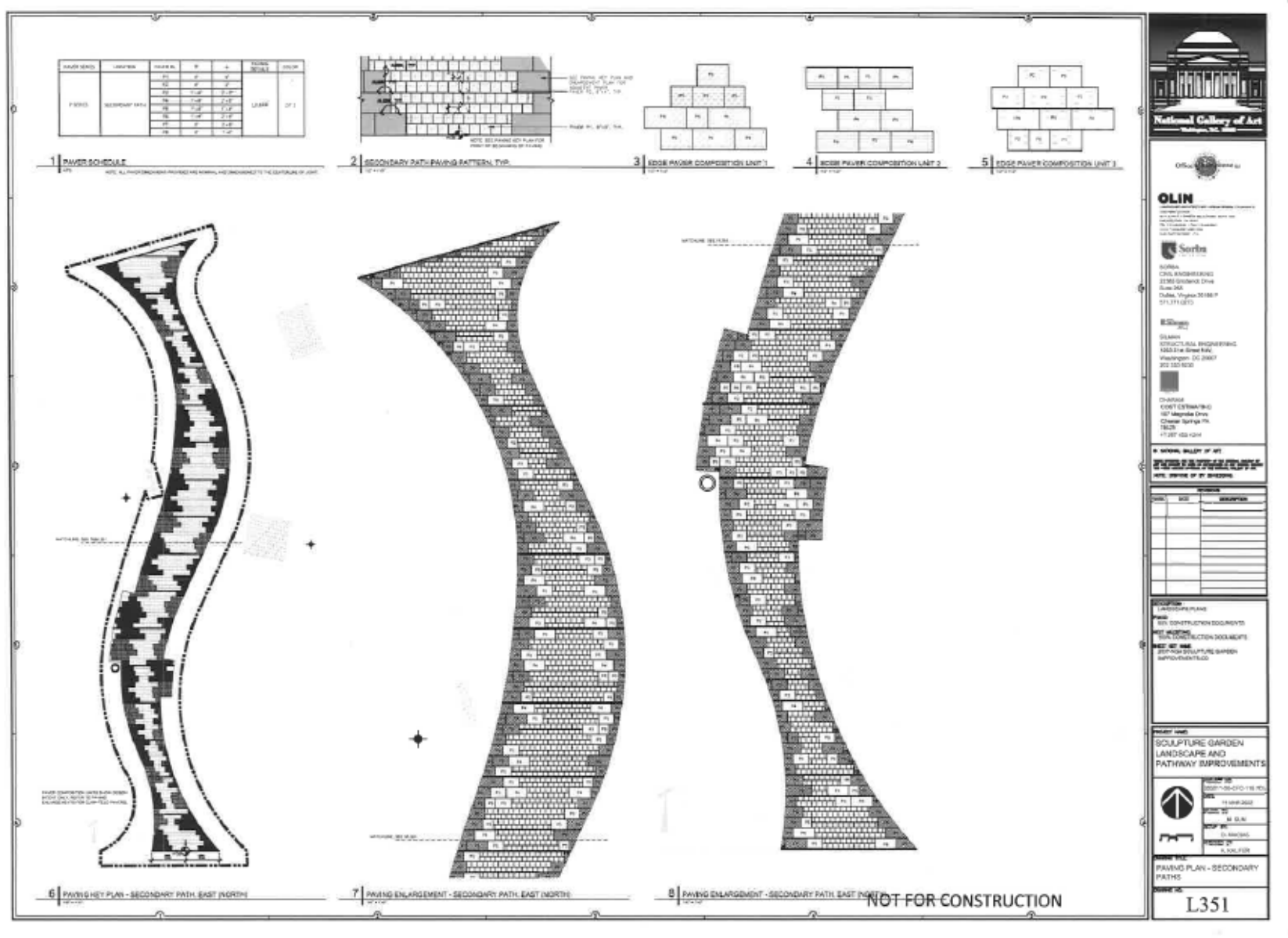


6. Gravel erosion at gravel-path/stone-path intersection

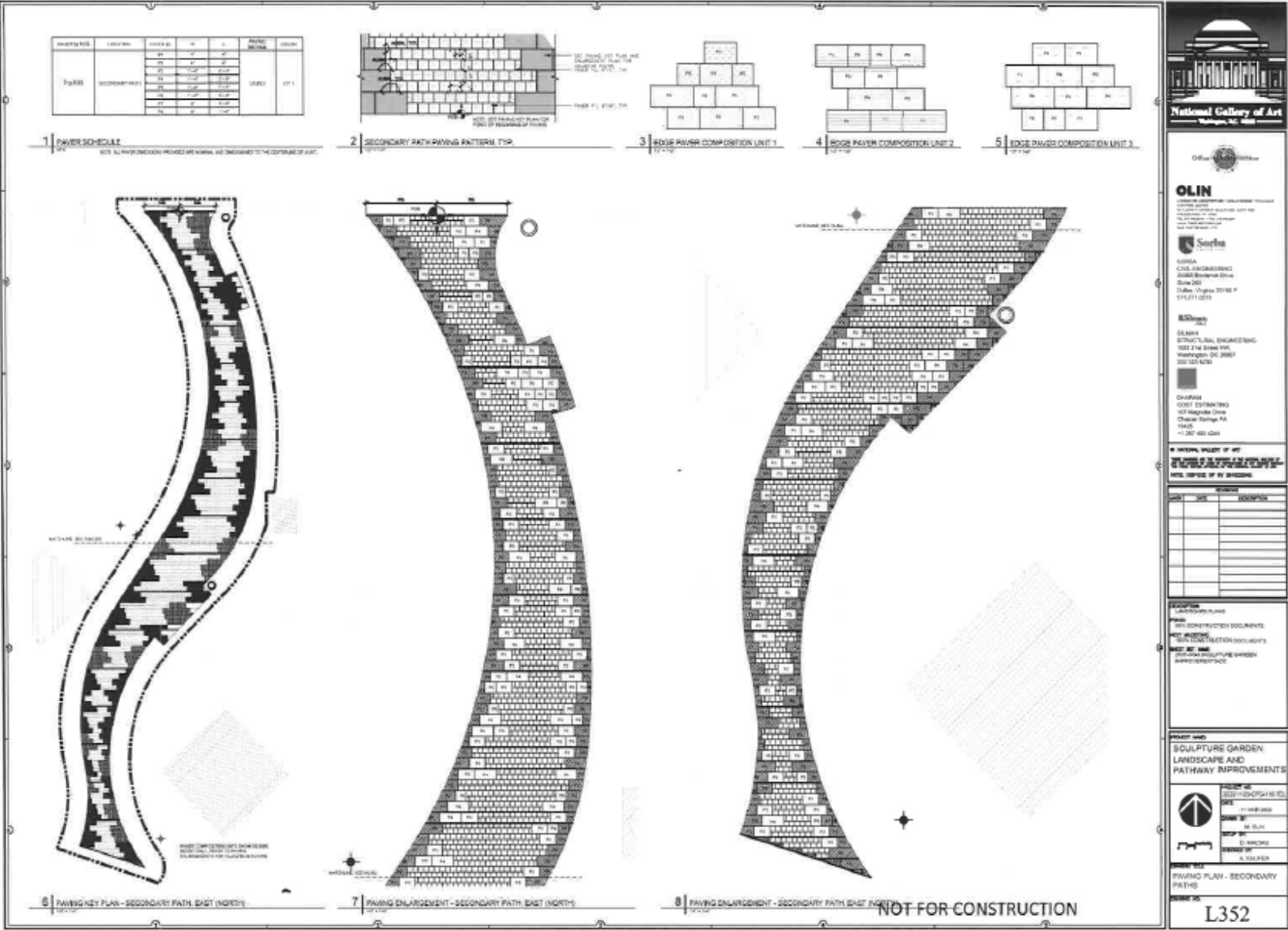
Sculpture Garden Secondary Gravel Paths



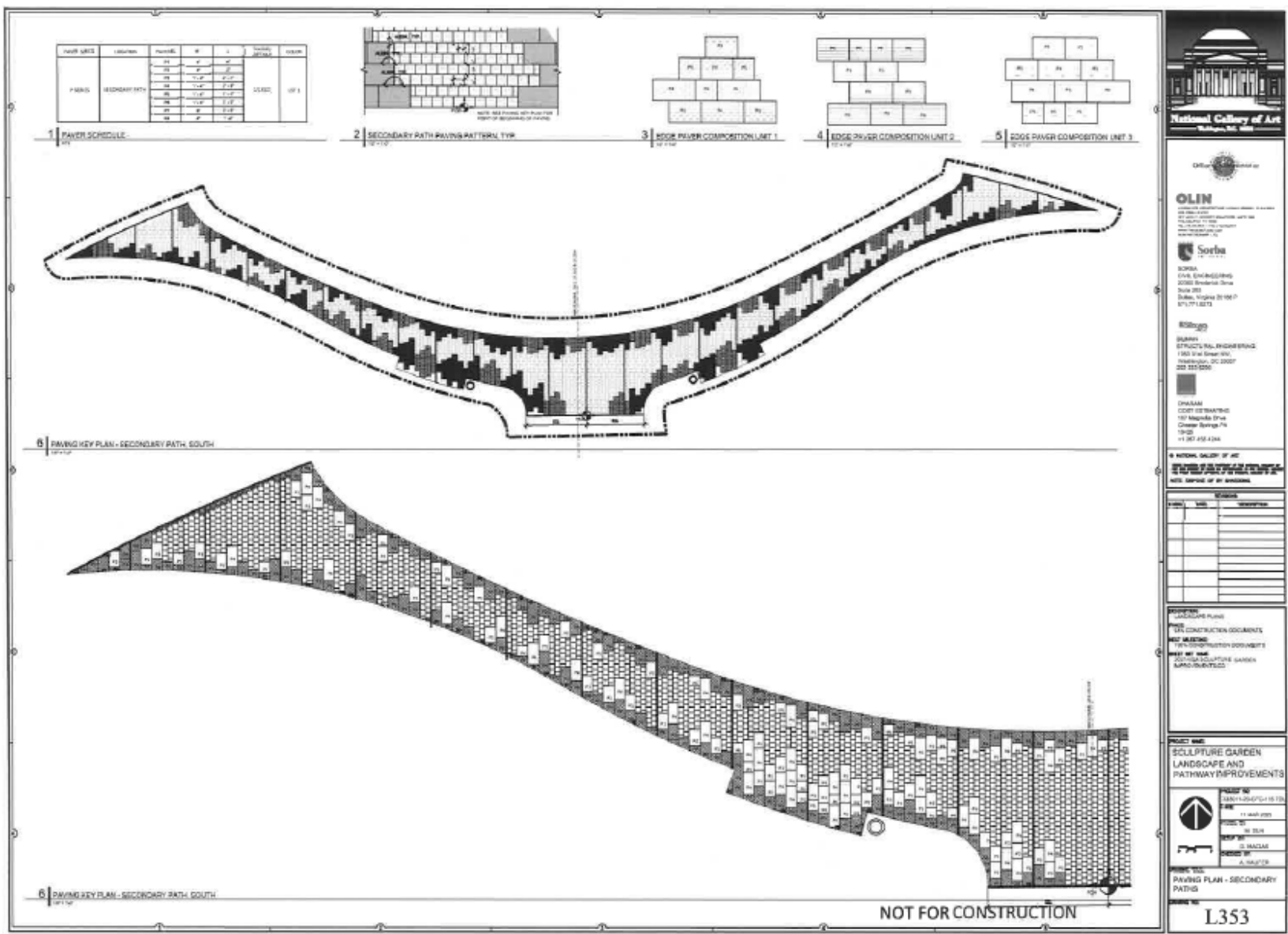
NGA Sculpture Garden Path Material Replacement



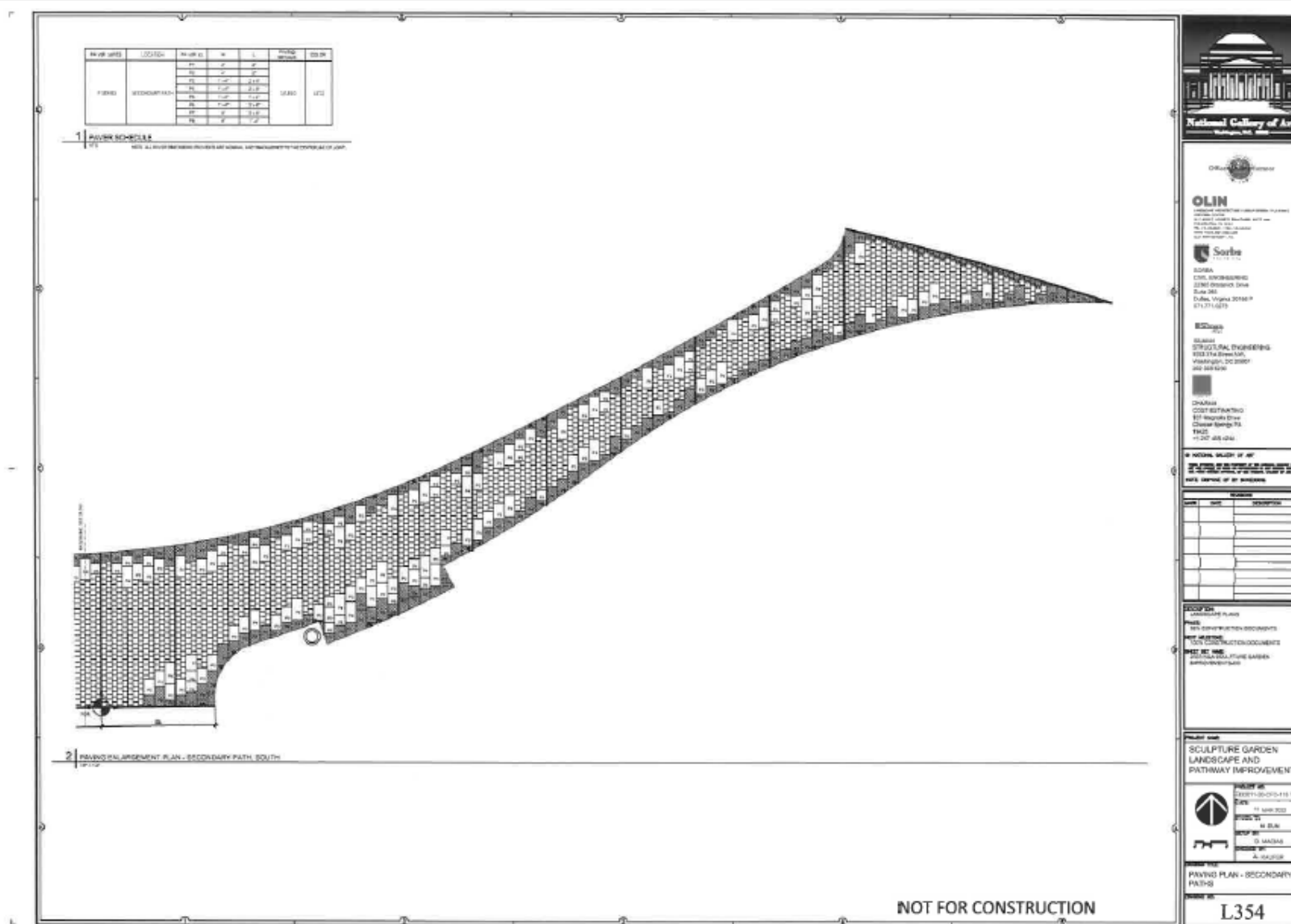
NGA Sculpture Garden Path Material Replacement



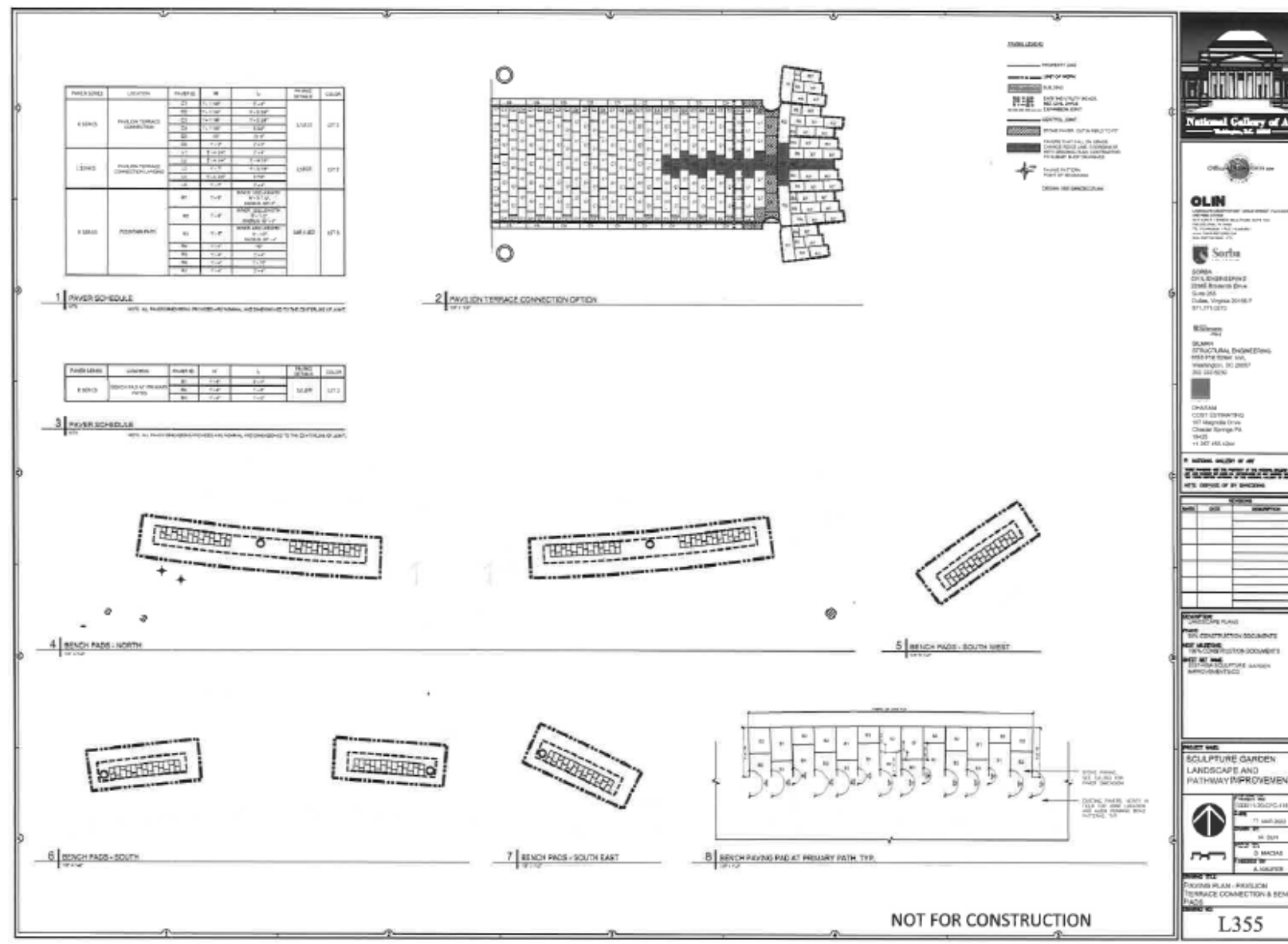
NGA Sculpture Garden Path Material Replacement



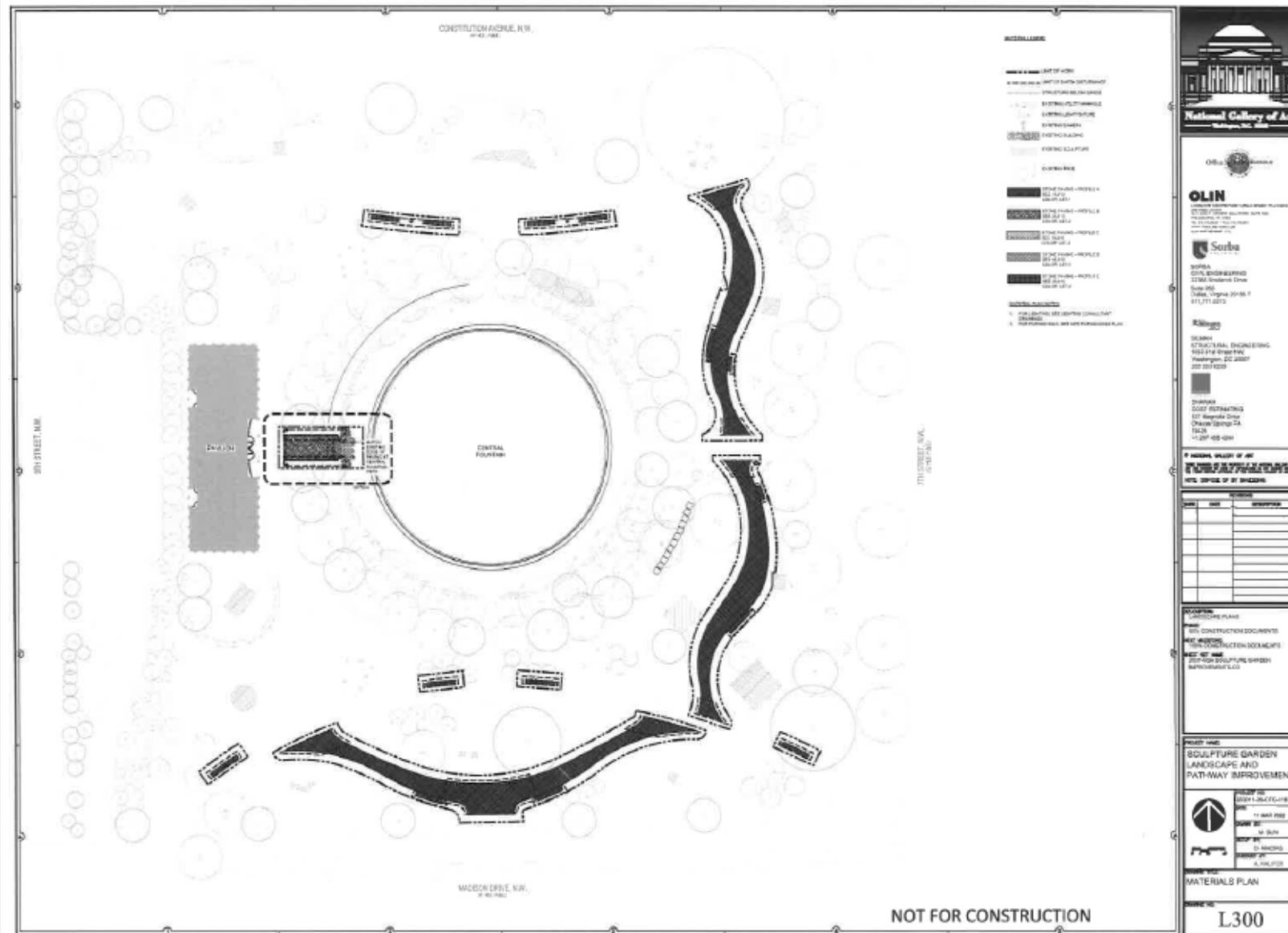
NGA Sculpture Garden Path Material Replacement



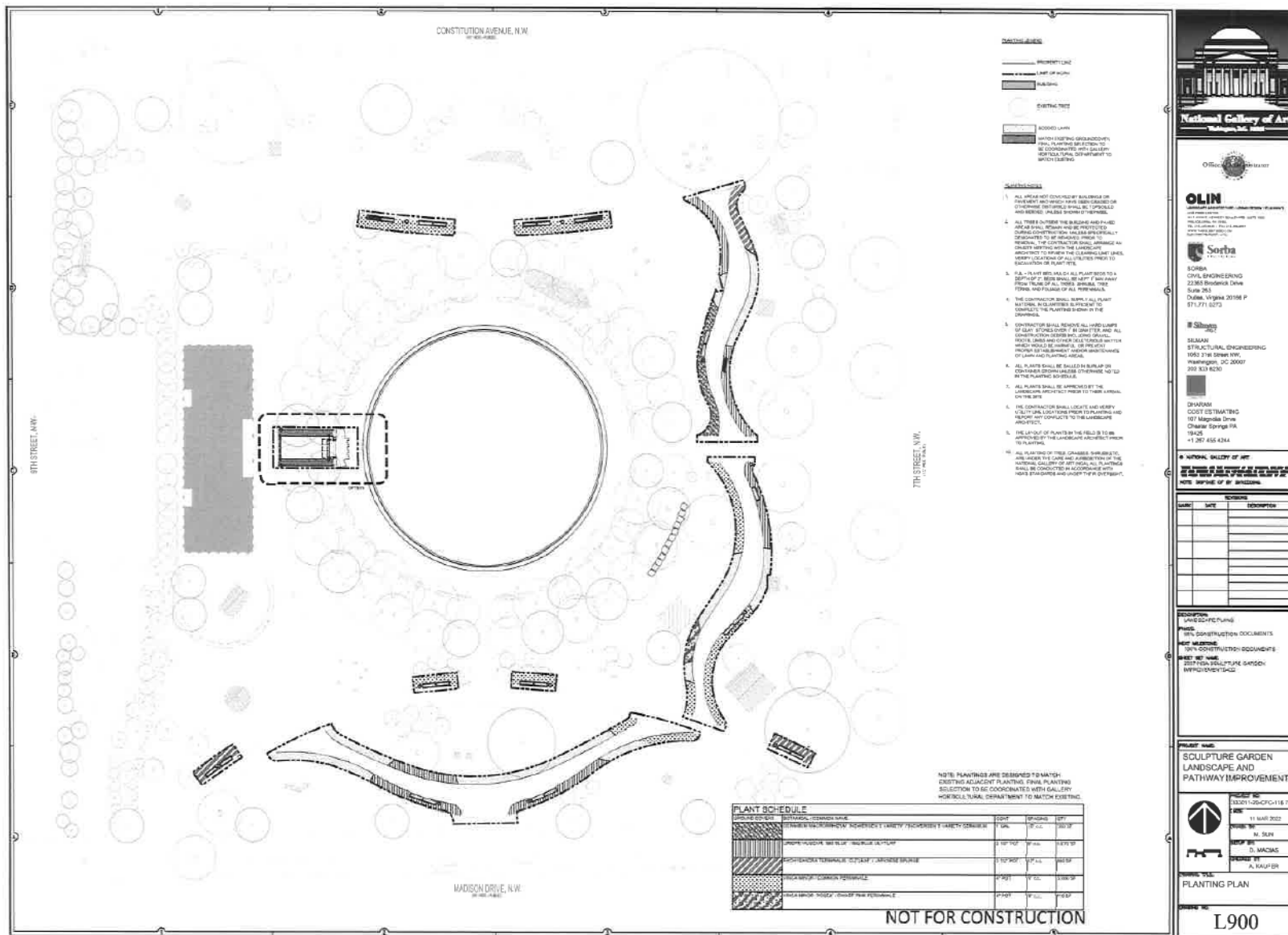
NGA Sculpture Garden Path Material Replacement



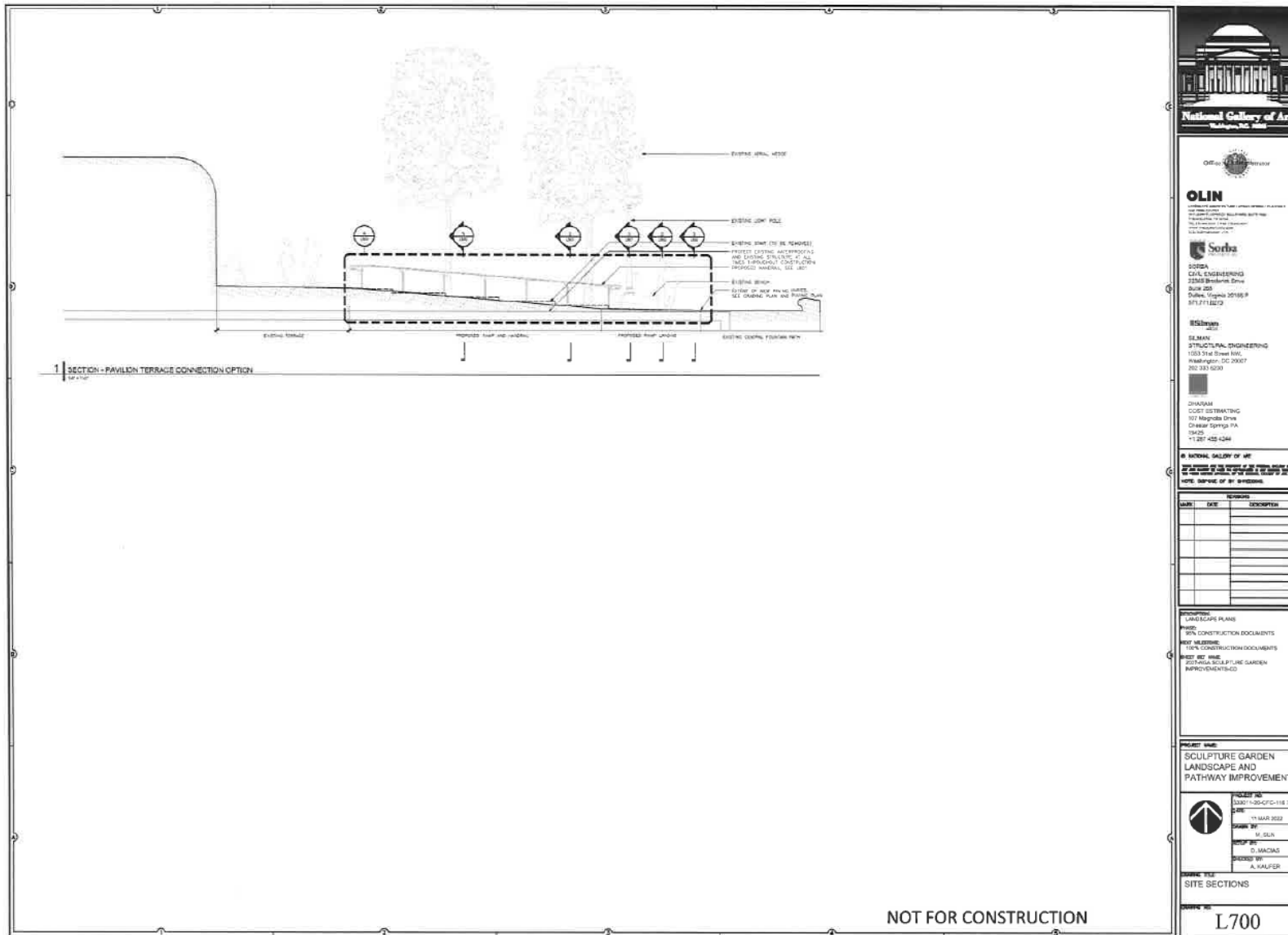
NGA Sculpture Garden Existing Stair and Ramp



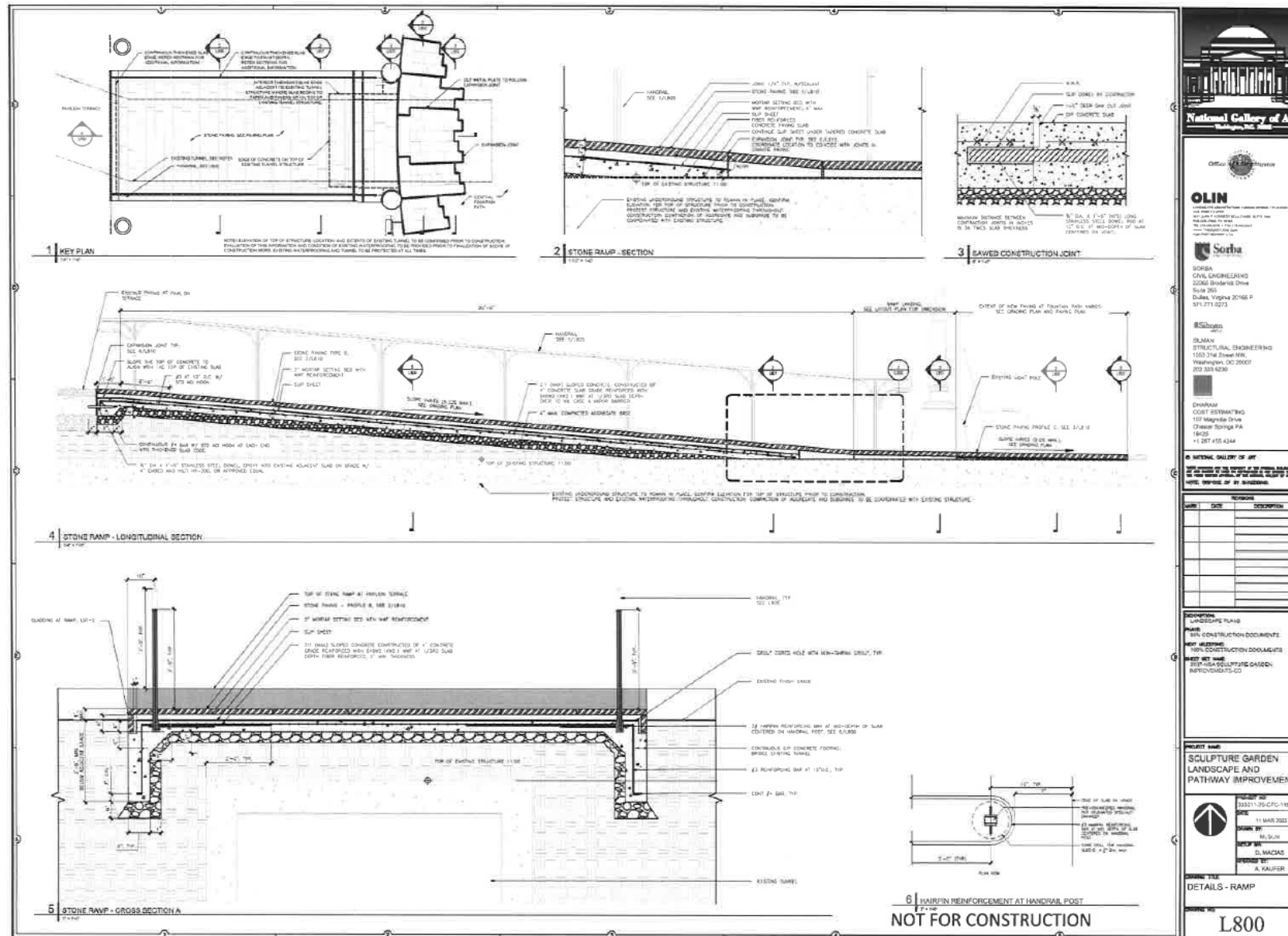
NGA Sculpture Garden Stair/Ramp Alteration



NGA Sculpture Garden Existing Stair/Ramp



NGA Sculpture Garden Stair/Ramp Alteration



NGA Sculpture Garden New Trash Receptacles

Big Belly Solar Trash Compactors as an Alternative to Pest Prevention and Waste Reduction at the National Gallery of Art Sculpture Garden.



NGA Sculpture Garden Current Trash Receptacles

Current Metal Waste Receptacles “Open Concept”

- ✓ Gives easy access to pests.
- ✓ Overall unsightly look of a heaping trash bin
- ✓ Litter scatters on the garden grounds
- ✓ Metal receptacles rust & corrode requiring continuing maintenance
- ✓ Cans need to be emptied more frequently and difficult to access during peak visitor times
- ✓ Unsanitary

Potential Situation



New BigBelly Closed Trash Receptacles



Solution

Big Belly Solar Powered Compactor
“Closed Concept”

- ✓ No Access for Pests
- ✓ Encloses trash leaving nothing exposed and reduces odor
- ✓ Clean and Aesthetically pleasing
- ✓ Receptacles can be designed to meet the Décor on the garden
- ✓ Durable “Street-Tough” low maintenance receptacles
- ✓ Solar Powered - no external electricity outlets needed
- ✓ Will improve visitors' overall positive experience
- ✓ Large footprint & Longevity 50 states and 50 countries in 16 years in service



New Trash Receptables Information

Tell Me What a Big Belly Can Do?

- ✓ Increased capacity 5:1 ratio; no overflows or visible waste
- ✓ Automated real time collection notifications via application
- ✓ Technicians will provide hands-on training for Hardware and Software
- ✓ Capacity limits can be set to compensate for varying amounts of people
- ✓ Big Belly technicians will do Big Belly maintenance/software updates
- ✓ Foot pedal option with hand guard safety system
- ✓ Can work in low sunlight areas; indoor units available
- ✓ Design features enable the organization to advertise or decorate the receptacle to mesh with your décor
- ✓ 60-month lease contract cost for (12) units = \$1,700; Annual cost est. \$21,000



New Trash Receptacles Information

What is the Proposal for Big Bellies?



- ✓ Remove all existing metal cans (26)
- ✓ Concrete slabs must be expanded or replaced to accommodate the Big Belly
- ✓ Strategically Place (12) Big Belly cans throughout the SG
- ✓ Cover all entrances and the Pavilion Café
- ✓ Agreement for maintenance and software updates are handled by BB technicians
- ✓ Good Will personnel will empty the Big Belly same as the metal cans
- ✓ Will evaluate the current number of Big Bellies to determine the number of bins

New Trash Receptacles Details and Dimensions

Big Belly vs. Metal Trash Can
Dimension Comparison

Height - 40.0"
Width - 28"
Weight - 125 lbs.
Volume -31 gal
Compact Volume - N/A
Base - 19" x 19"



Height - 49.8"
Width - 25"
Weight - 270 lbs.
Volume -33 gal
Compact Volume - 150 gal
Base - 26" x 27"

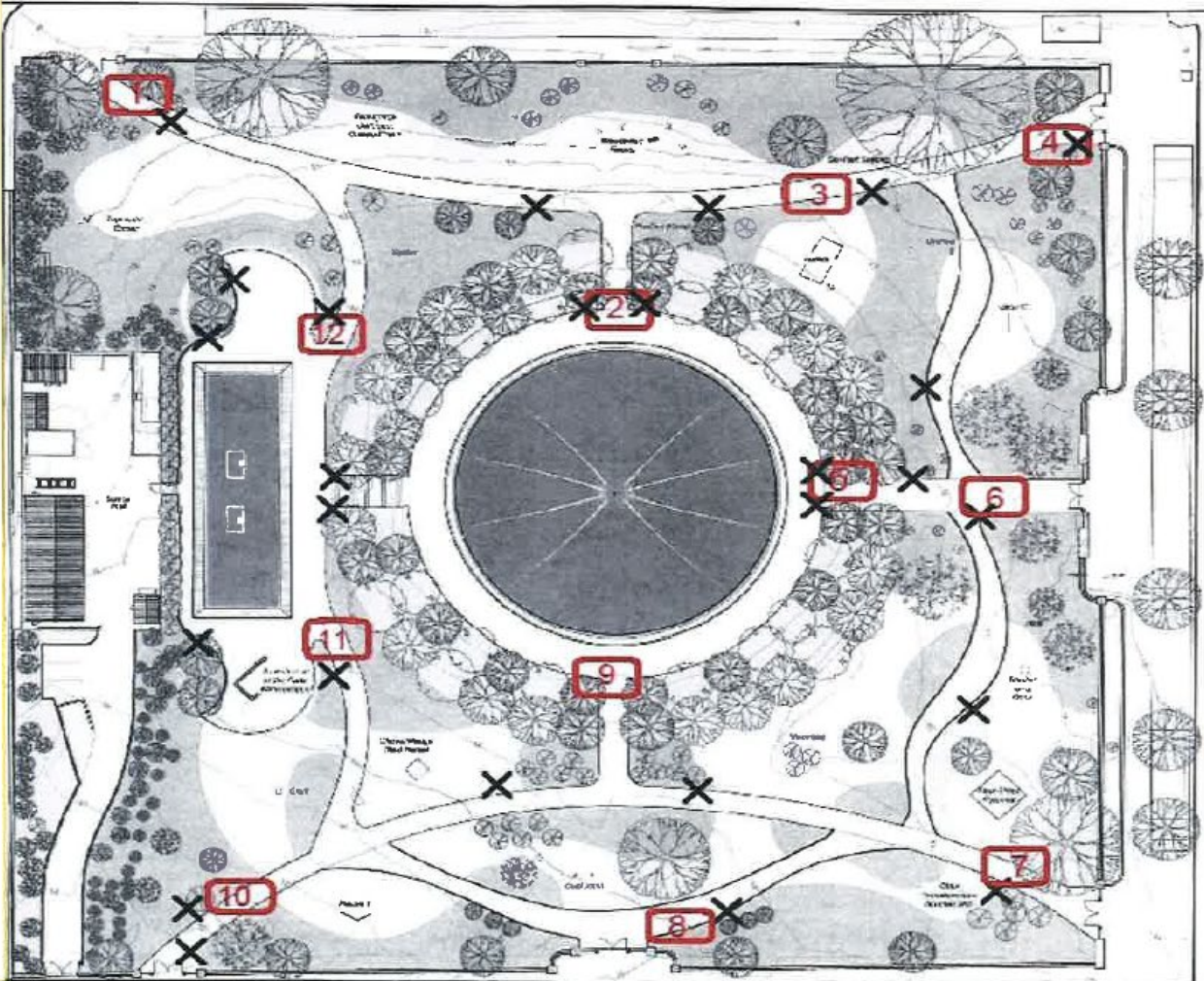


Site Plan Showing Locations of Trash Receptacles

Big Belly Solar Trash Can Proposal

X – Indicates the Current Locations
of the Existing Metal Cans (26)

Locations of the Proposed Big
Belly Solar Trash Cans (12)



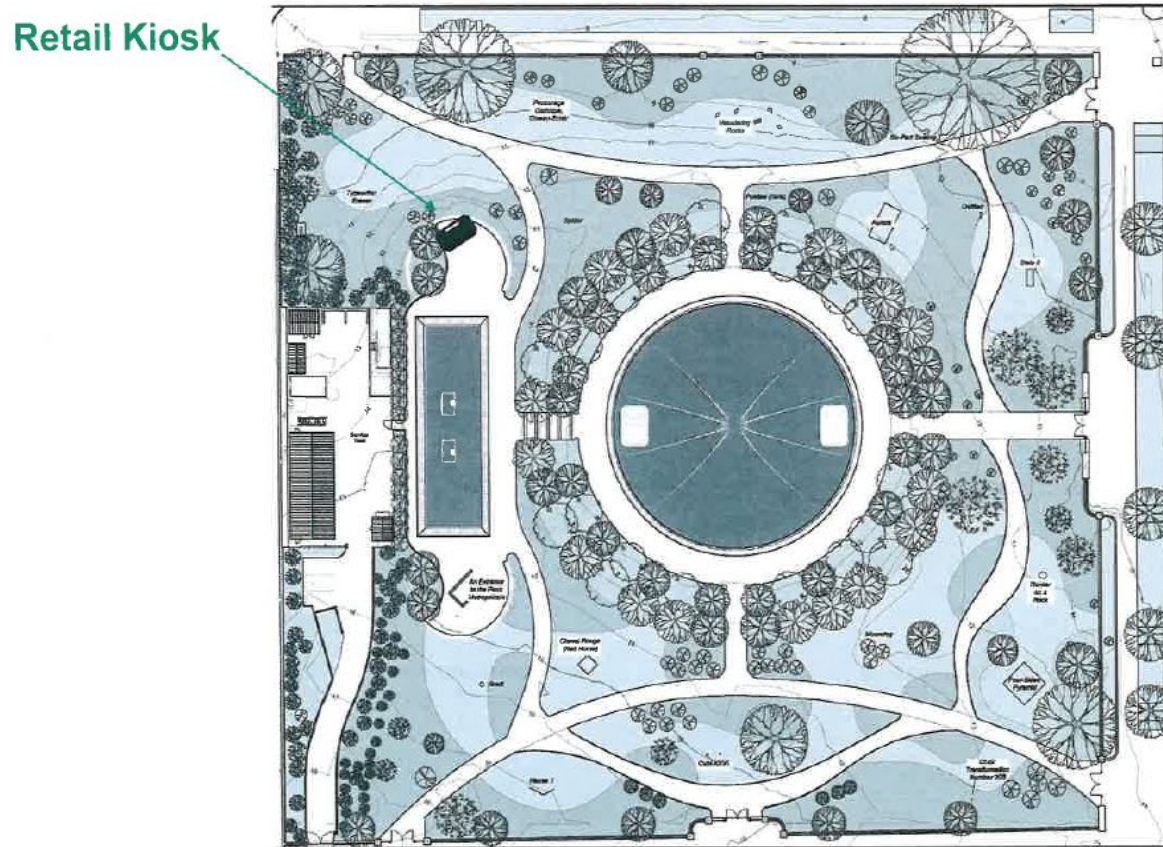
National Gallery of Art
Office of Administration

SCULPTURE GARDEN PAVILION BASEMENT & GROUND FLOOR PLANS; SG SITE PLAN
KEY PLANS 2019

4 MAY 2019

21

Sculpture Garden Site Plan Showing New Retail Kiosk



Rendering of New Retail Kiosk when Open



National Gallery of Art Sculpture Garden Kiosk 5/27/2022 3

Rendering of New Retail Kiosk when Closed



Rendering of New Retail Kiosk

