

APPENDIX A -U.S. SOLDIERS' AND AIRMEN'S HOME NATIONAL CEMETERY

1. SCOPE AND MISSION

The U.S. Soldiers' and Airmen's Home National Cemetery (SAHNC) is one of the nation's oldest military cemeteries and occupies approximately 16 acres of land adjacent to the Armed Forces Retirement Home in NW Washington, DC. SAHNC conducts on average seven interments per year and provides a place of dignity and honor to lay to rest those who have served our Nation and reside at the Armed Forces Retirement Home. The cemetery is a place of rest for approximately 14,226 individuals, including a large number of Civil War veterans.



The photo above illustrates the classic style of the vehicular entrance gate to Soldiers' and Airmen's Home National Cemetery.



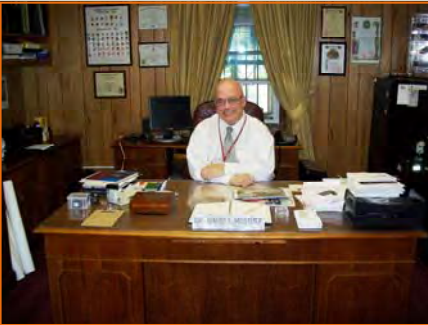
View of headstones in the Civil War section of the cemetery.

2. EXISTING CONDITIONS

SAHNC is located approximately four miles north of the U.S. Capitol Building. It is bounded on the east by North Capitol Street NW/ Clermont Drive NE, on the north by Rock Creek Church Road NW/ Allison Street NE, and on the west and east by Harewood Road NW. (See Figure A-1) SAHNC can be characterized as a mature, serene cemetery environment. The Superintendent's Lodge is located at the entrance to the cemetery and contains the Superintendent's Office. This serves as the gathering point for families attending committal



Views of headstones in Section M of the cemetery.



The Superintendent's Lodge has had a number of alterations over the years and currently serves as the Superintendent's Office.

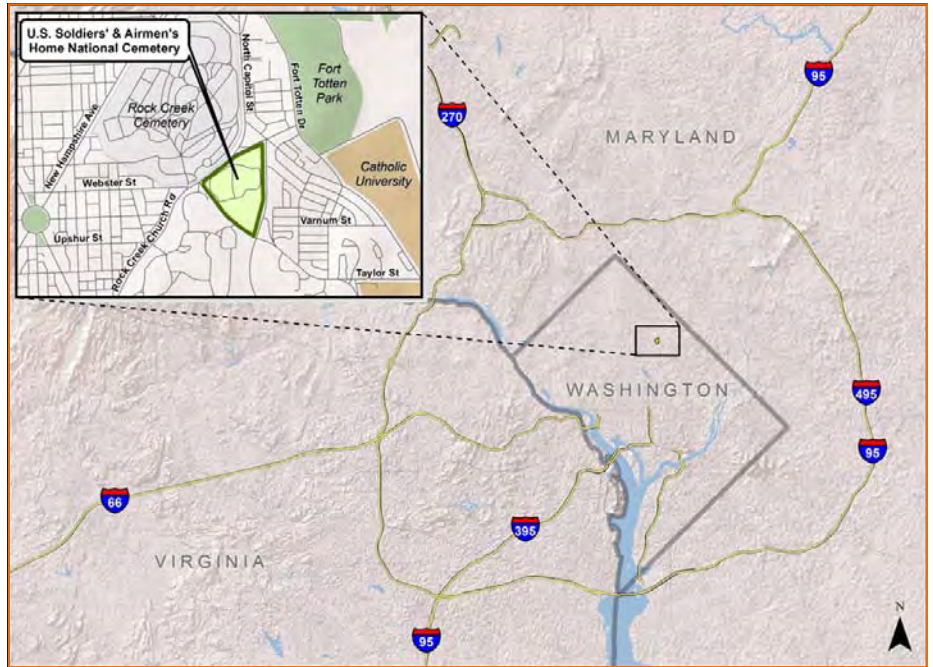


Figure A-1: SAHNC Cemetery Location

services and is also where visitors can obtain information about the cemetery or the location of a loved one's gravesite. The Superintendent's Office (shown in the photos on the left) is very small and can only accommodate a few people, plus the Superintendent.

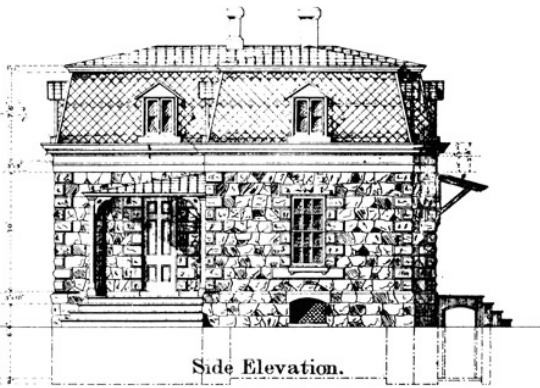
The Superintendent's Lodge has been modified substantially over the years, and also has previously served as the residence for the Superintendent in the recent past. The Superintendent's Lodge was originally constructed the style of the original designs for U.S. Army Cemeteries created by BG Montgomery C. Meigs. (See Figure A-2)

The original carriage house is located to the east of the residence and is primarily used for storage. The carriage house contains public restrooms accessible from the rear.

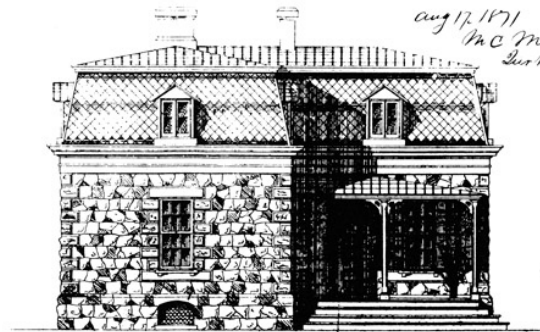
Within the cemetery proper, there are several structures located across the grounds. The Logan Mausoleum is one of the more striking structures located at the entrance to the cemetery. A portable metal roofed committal shelter is located along the north/south roadway that lies between Sections P and Q to the west and Section L to the east.

Pedestrian access to the cemetery is available at the vehicular entrance next to the Superintendent's Lodge along Harewood Drive. There is a ceremonial pedestrian entrance (with a locked gate) and at the western corner of the cemetery at Harewood Drive and Rock Creek Church Road NW. This entryway features an ornate gateway and flag pole/plaza area.

**DESIGN FOR SUPERINTENDENTS LODGE.
NATIONAL CEMETERIES.**



Side Elevation.

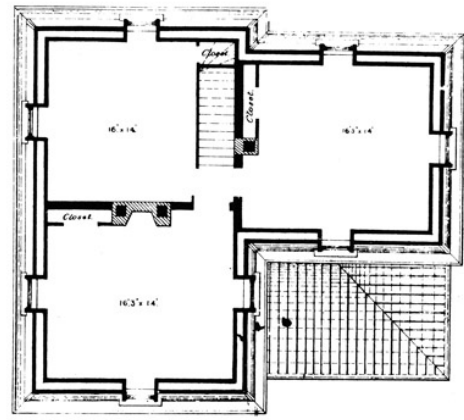


Front Elevation.

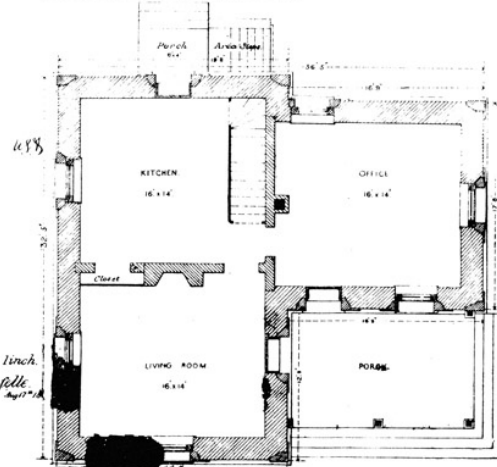
aug 17, 1871
M.C. Meigs
Des. by P. A. J.

scale feet to
Tho: P. A. J.

G 4



Plan of Attic.



Plan of 1st Story.

**Design for Superintendent's Lodge for National Cemeteries
Montgomery C. Meigs, August 17, 1871**



Figure A-2 above shows the original plans for the standard design for a Superintendent's Lodge for National Cemeteries. The photos on the left shows a Meigs Lodge that remains intact today at the Battleground National Cemetery near Silver Springs, MD in Washington, D.C. This is approximately what the original lodge at SAHNC would have looked like prior to being remodeled in several periods over the years.



Views of the carriage house exterior (top and middle) and interior (bottom)

Maintenance contractors occupy a more contemporary structure located in the center of the cemetery. A materials storage yard is located next to the contractor's garage and is screened by modern chain link fencing. Figure A-3 depicts major activity zones within the cemetery.

3. HISTORICAL PERSPECTIVE AND MILESTONES

SAHNC preceded ANC by three years and began as a military cemetery in July 1861. Just days after the Battle of Bull Run, the Commissioners of the United States Military Asylum offered six acres of land at the north end of the Home's grounds as a burial ground for soldiers and officers. This offer was accepted in late July 1861, and the first burials were made shortly thereafter on 03 August 1861.

From 1861 to 1864, the cemetery accepted thousands of soldiers' remains from 17 of the 25 Union states, quickly filling the cemetery's six-acre capacity. An 1874 report on the condition of the cemetery noted more than 5,600 interments, including 278 unknown, 125 Confederate prisoners of war, and 117 civilian relatives of the deceased and employees of the Home.

In 1883, more than nine additional acres were added to the grounds, bringing the cemetery's total size to nearly sixteen acres occupied by SAHNC today. In 1900, all of the Confederate remains were reinterred to Section 16 of ANC.¹

The cemetery is near President Lincoln's "cottage" which is located on the grounds of the Armed Forces Retirement Home. It is thought that President Lincoln walked the grounds of SAHNC when he was in residence at the cottage.

4. CIRCULATION

SAHNC is served by an internal loop road in the northern half of the cemetery beginning at Harewood Road NW in the vicinity of the Superintendent's Lodge. An additional roadway runs in a north/south direction just west of Section L. This center roadway is not required for circulation and could be converted to in-ground interment space, if needed, to increase the active life of the cemetery.

¹United States Soldiers' and Airmen's Home National Cemetery, Washington, D.C. (n.d.). Retrieved from http://www.nps.gov/history/nr/travel/national_cemeteries/District_of_Columbia/US_Soldiers_and_Airmens_Home_National_Cemetery.html

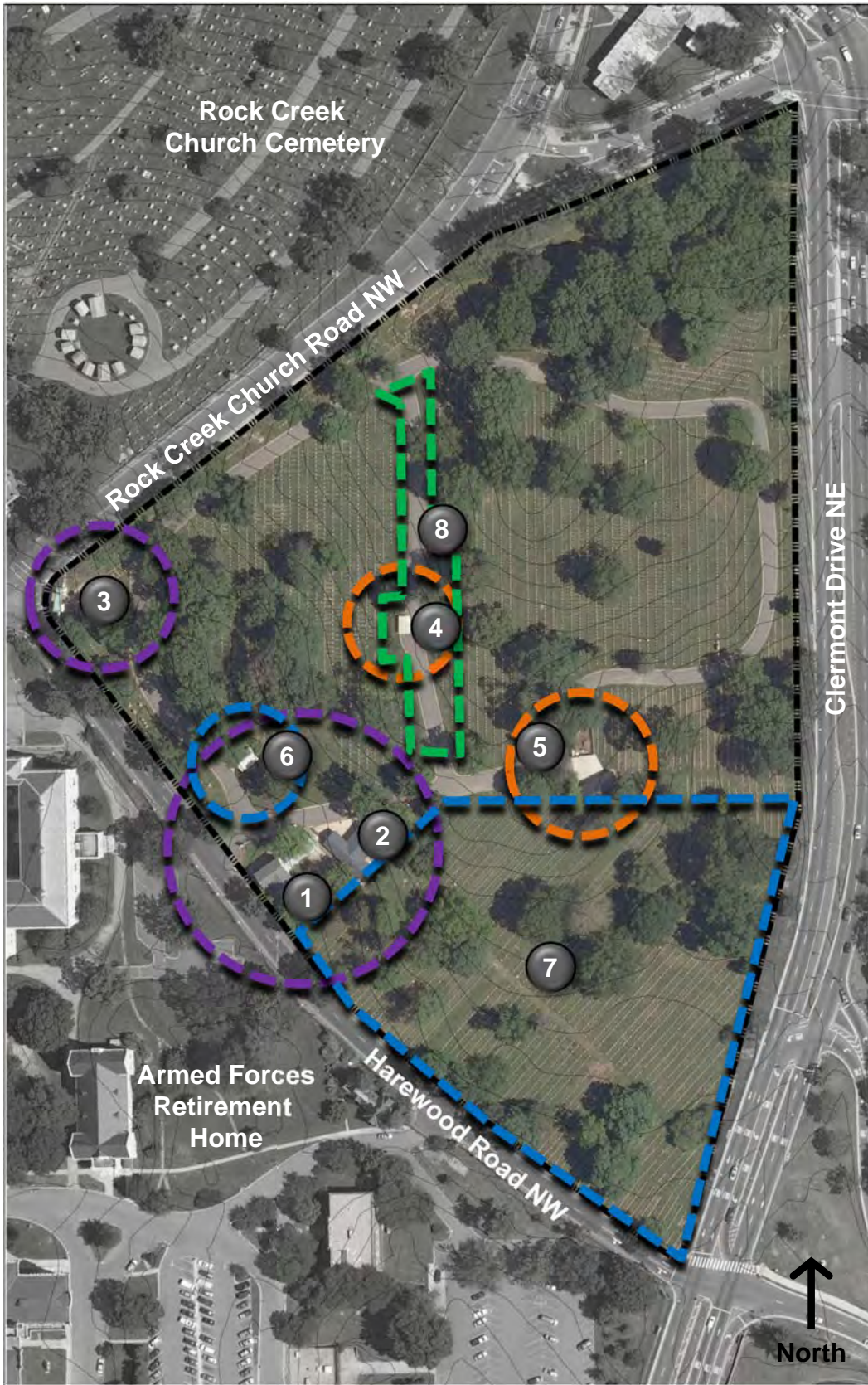


Figure A-3:
Major Activity Zones

LEGEND:

Arrival Zone:

- 1. Superintendent's Lodge
- 2. Carriage House
- 3. Pedestrian Entry Gate

Cemetery Operations Zones:

- 4. Committal Shelter
- 5. Maintenance Contractor Building

Visitor Destinations:

- 6. Logan Mausoleum
- 7. Area for Possible "Lincoln Path" (Civil War Sections)

Potential New Interment Zone

- 8. Roadway East of Section L that could become a new in-ground interment area

★ HONOR ★ REMEMBER ★ EXPLORE ★

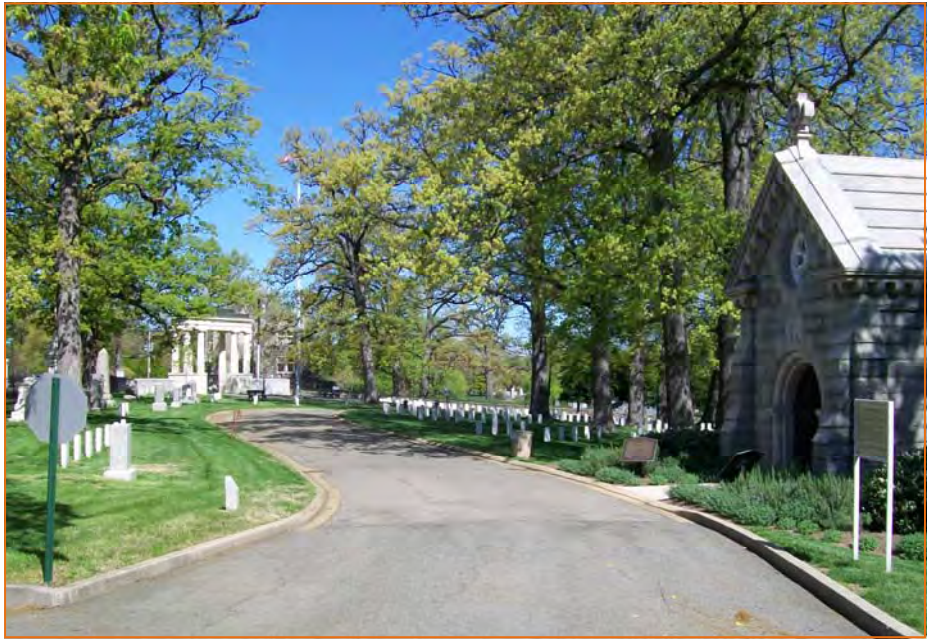
FORWARD TO THE THIRD CENTURY
THE MASTER PLAN

ARLINGTON NATIONAL CEMETERY
SOLDIERS' AND AIRMEN'S HOME NATIONAL CEMETERY

HNTB



Wrought iron fencing offers views into the cemetery from surrounding roads such as Rock Creek Church Road NW (top) and Harewood Road NW (bottom). As shown in the photo on the bottom, the brick sidewalks along the cemetery edge on Harewood Road are in need of repair. Coordination with the District Department of Transportation is needed to determine responsibility for improvement as their current condition creates a tripping hazard.



View of access road, the main pedestrian gate and the Logan Mausoleum all located in the north eastern corner of the cemetery.

5. TOPOGRAPHY

Figure A-4 depicts the topography of SAHNC. The cemetery's high point is located at the main entrance off Harewood Road NW with an elevation of 320 feet above mean sea level. From this highpoint, the terrain of the cemetery gradually slopes to a low point of 270 feet above mean sea level at the northern tip of the cemetery at the intersection of Rock Creek Church Road NW and Clermont Road NE.

6. VIEWS AND EXPOSURE

A simple wrought-iron fence surrounds the cemetery on all sides, except along the north edge of the site, where the fence sits atop a stone retaining wall. Generally speaking, the perimeter fencing along the northern, western, and southeastern boundaries of SAHNC allows attractive views to the cemetery from surrounding roadways and adjoining sites. Views to the cemetery from Clermont Drive NE along the cemetery's northeastern boundary are more limited due to the fact the roadway is some 10 to 20 feet lower in elevation than the cemetery at this point.

At the west corner of the cemetery stands the imposing main gate, which consists of four pairs of Doric order columns, each inscribed with the name of a well-known American General. A second vehicular gate on Harewood Road NW features a double iron gate with stone piers. Just inside this gate is the two-story Superintendent's Lodge, originally built circa 1867, and the Logan Mausoleum, the most

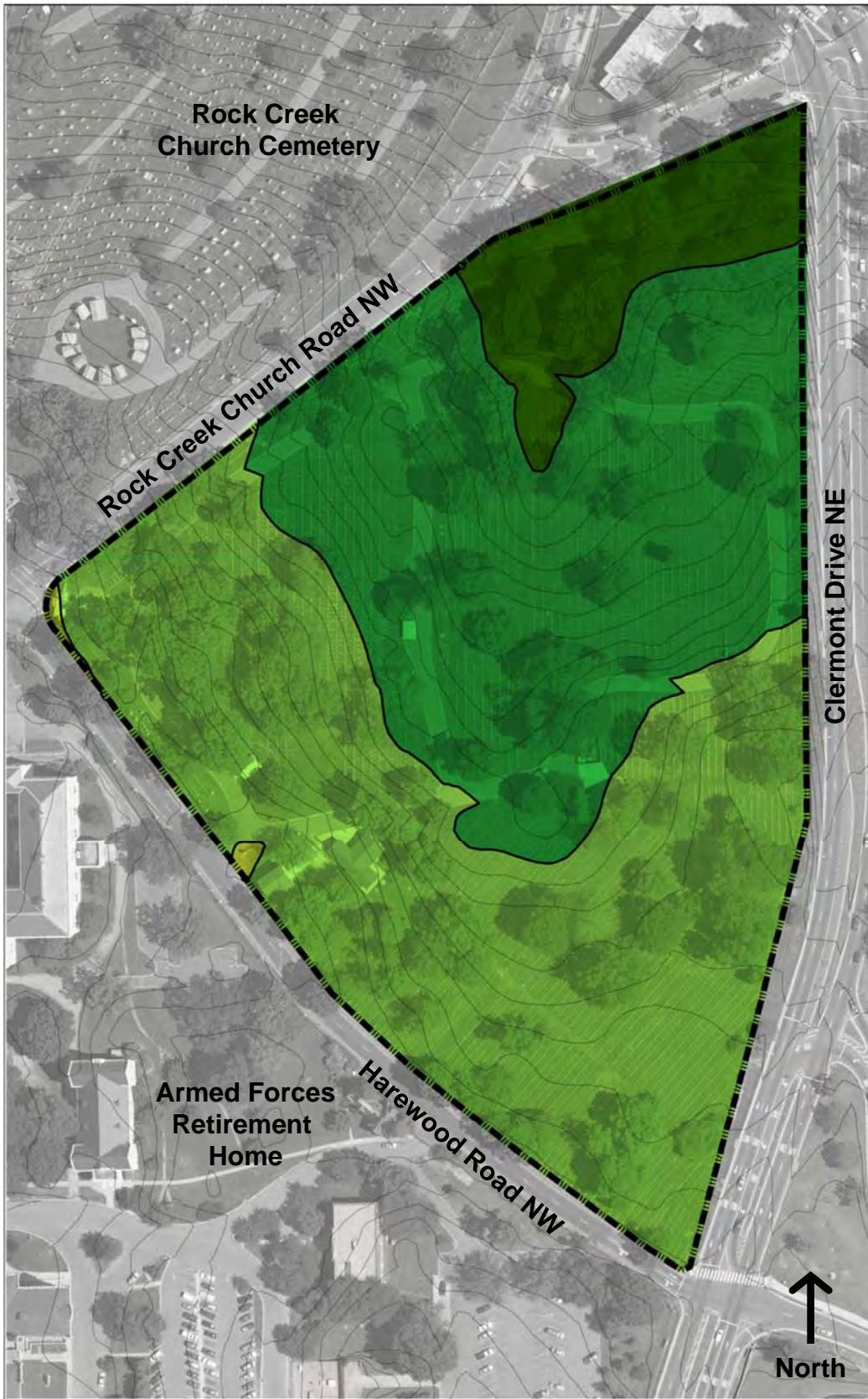
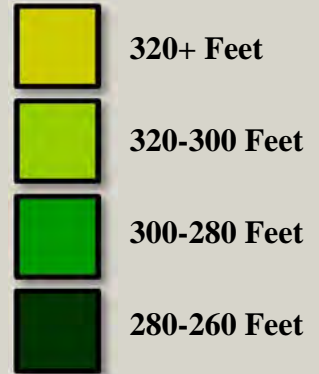


Figure A-4:
Topography

LEGEND:

Contour Intervals:



★ HONOR ★ REMEMBER ★ EXPLORE ★

FORWARD TO THE THIRD CENTURY
THE MASTER PLAN

ARLINGTON NATIONAL CEMETERY
SOLDIERS' AND AIRMEN'S HOME NATIONAL CEMETERY

HNTB 

prominent burial monument at the cemetery. These features are visible from the cemetery boundary along Harewood Road NW.

There are some important views from the cemetery along its western and northern edge of buildings of the Armed Forces Retirement Home compound. Views to the east of the cemetery are not as compatible with the cemetery environment and feature low rise apartment buildings located on the east side of Clermont Drive NE. The eastern edge of the cemetery could benefit from additional landscape and/or boundary wall screening of these views.

7. VEGETATIVE COVER

Figure A-5 depicts the vegetative cover at SAHNC. Similar to Arlington National Cemetery (ANC), mature and specimen trees located across the cemetery are a significant part of the visual image and identity of the place and contribute greatly to the pastoral and serene setting of the cemetery.

In the 16 acres of the cemetery, there are close to 200 trees representing 35 different species that are mostly mature native oaks and maples. There are also some additional landscape beds with annuals and perennials. Continued maintenance and an ongoing program of replacement plantings should continue to be part of the program of operations at SAHNC as it is at ANC. Further guidance can be found in the Cemetery Design Guide.

8. RECOMMENDATIONS

Figure A-6 depicts the location of recommended projects for SAHNC. Proposed projects are:

1. In-Ground Interment Spaces - Remove the north/south roadway located between Section P/Q and Section L and convert the ground into in-ground interment space to extend the active life of the cemetery. This could create the opportunity for up to 200 - 300 new in-ground interment spaces and is a long-term project given interment capacity is not a pressing issue at this time.
2. Superintendent's Lodge Renovation - Undertake a structural evaluation of the Superintendent's Lodge and carriage house to determine requirements for renovation and use as a living quarters. The original stable building should be remodeled for better storage utilization, better restroom accommodations, and to potentially provide an office/interpretive area.
3. Operations Projects - The fencing around contractor materials should be changed to a stone or brick boundary wall to screen



Figure A-5:
Vegetative Cover

LEGEND:

Major Tree Groups:

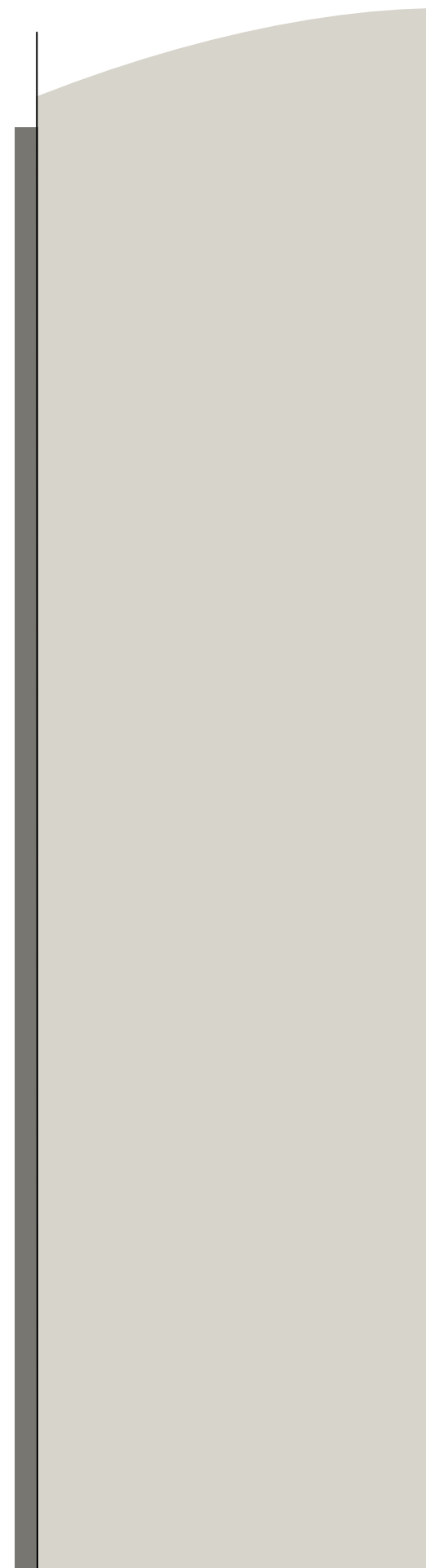
- Deciduous
- Coniferous

★ HONOR ★ REMEMBER ★ EXPLORE ★

FORWARD TO THE THIRD CENTURY
THE MASTER PLAN

ARLINGTON NATIONAL CEMETERY
SOLDIERS' AND AIRMEN'S HOME NATIONAL CEMETERY

HNTB



materials instead of the contemporary chain link fencing that is transparent, modern and not in keeping with the architectural style and visual quality of the cemetery.

4. Infrastructure Projects - Undertake an inventory and assessment of current pavement and stormwater utility conditions and develop capital project requirements to bring systems to desired standards. Install conduit and materials necessary to support installation of an IT information kiosk in the cemetery.
5. Site Elements - Signage and seating are currently inconsistent across the cemetery. While there are some benches available, additional resting places would be beneficial. A consistent design vocabulary for signs and seating should be installed across the cemetery (see ANC Design Guide for recommendations).
6. Tree Preservation - Continue to evaluate, monitor, and maintain the health of the existing specimen trees and vegetation and continue with a pro-active tree replacement program in order to maintain the iconic image and identity of the cemetery.
7. Exterior Improvements - Work with the District Department of Transportation (DDOT) to repair sidewalks outside the cemetery perimeter that are currently in need of repair.



Figure A-6:
Major Master Plan
Initiatives

LEGEND:

Interment Support Projects:

1. Remove Surplus Road and Redevelop for In-Ground Interment Spaces

Cemetery Operations Projects:

2. Remodel the Superintendent's Lodge for Potential Use as Quarters
3. Improve Screening and Compatibility of Maintenance Contractor Building

Other Projects:

- Infrastructure Assessments and Improvements
- Construct an IT Information Center
- Add Site Furnishings and Signage (Cemetery-Wide)
- Tree Preservation/Replacement Program (Cemetery-Wide)

★ HONOR ★ REMEMBER ★ EXPLORE ★

FORWARD TO THE THIRD CENTURY
THE MASTER PLAN

ARLINGTON NATIONAL CEMETERY
SOLDIERS' AND AIRMEN'S HOME NATIONAL CEMETERY

HNTB