

Roosevelt Senior High School Modernization

Washington, DC

Submitted by the DC Department of General Services

Preliminary and Final

Commission meeting date: July 10, 2014

NCPC review authority: District Project (40 U.S.C. § 8722(b)(1))

Applicant request: Preliminary and final site and building plans

Delegated / consent / open / executive session: Delegated

NCPC Review Officer: J. Hinkle

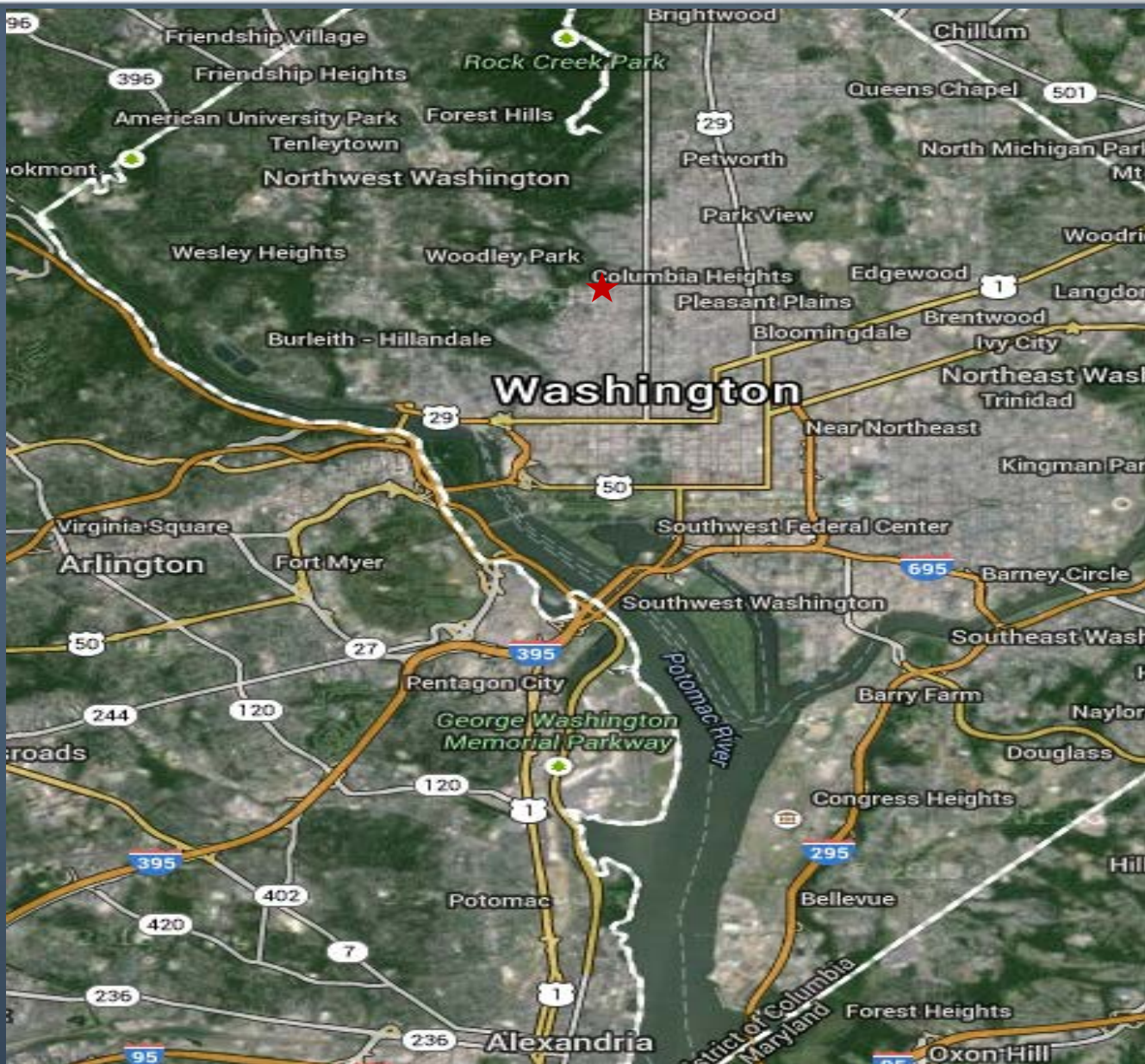
NCPC File number: 7587

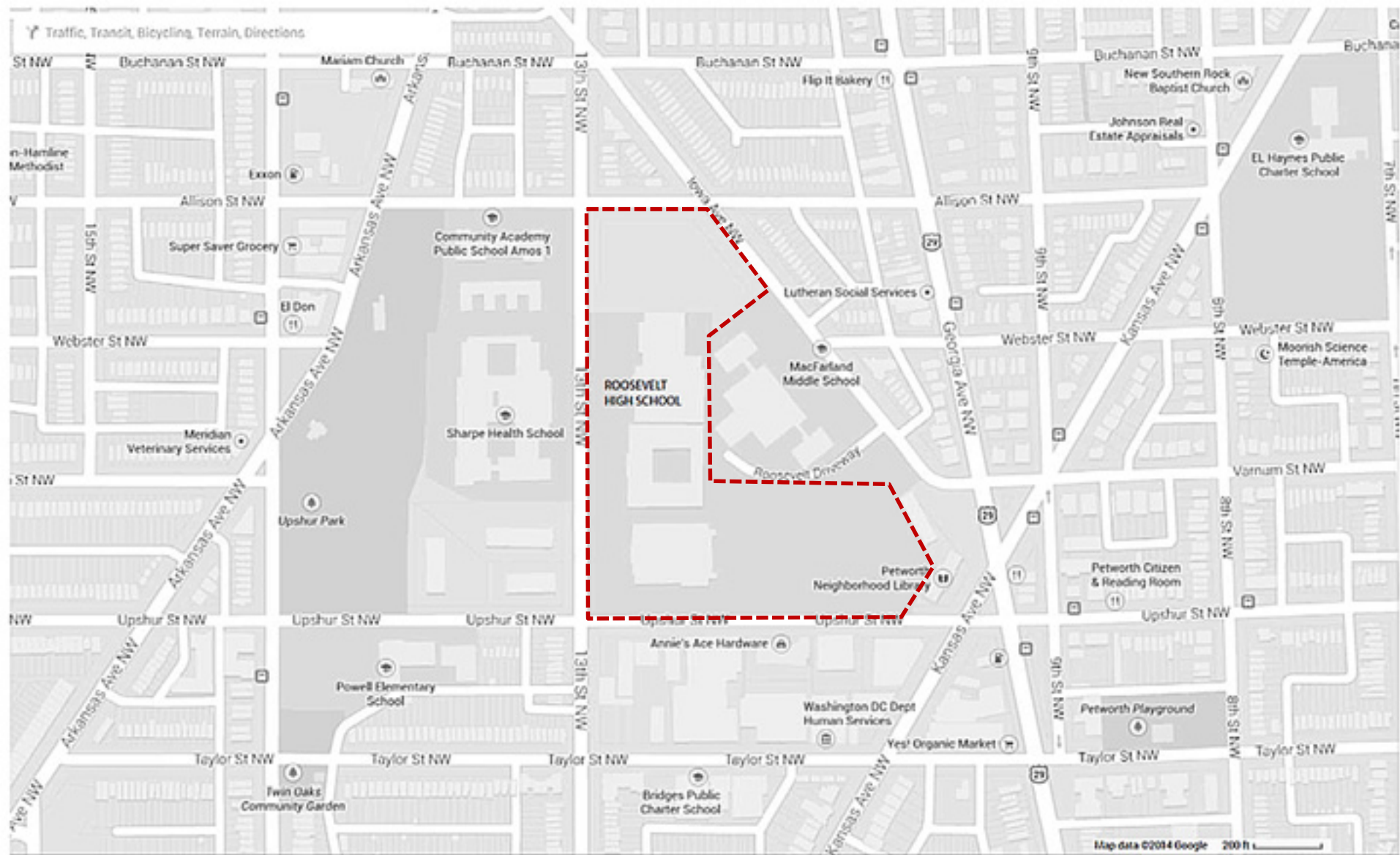
Project summary:

The renewed Roosevelt campus is centered around a new enclosed, central atrium that will serve as the “heart” of the modernized school. The renovation will demolish approximately 30,000 gsf of construction that was added in 1977 which significantly degraded the quality of the learning spaces in the existing building. The design will include a new 3,200 pavilion that will provide a dedicated entrance to both the S.T.A.Y. program and the community. In endeavoring to create a great 21st-century school for Roosevelt’s students, staff and community, this design will:

- Provide technology-enhanced classrooms and laboratories that stimulate disciplinary exploration.
- Foster the intellectual, social and emotional development critical to Roosevelt education by providing not only the best individual instructional spaces but also complementary places for positive school community interaction outside of class.
- Nurture a sense of civic pride in the students by renovating and re-opening the historic, prominent 13th Street main entrance.
- Promote proactive and subtle security by providing dedicated zones for the school and the public, and by distributing spaces for faculty and staff throughout the campus.
- Reduce the perceived scale of the school for the users by streamlining the circulation through the building, and by creating identifiable “neighborhoods” of classrooms and support spaces based around the school’s academy structure.
- Enable active community use of the gym, pool natatorium, and health clinic, without disruption of the academic program by zoning the facility for after school use.
- Promote safe and accessible pedestrian patterns around the site.
- Create a “high performance” school that both conserves resources and creates an environment conducive to learning.

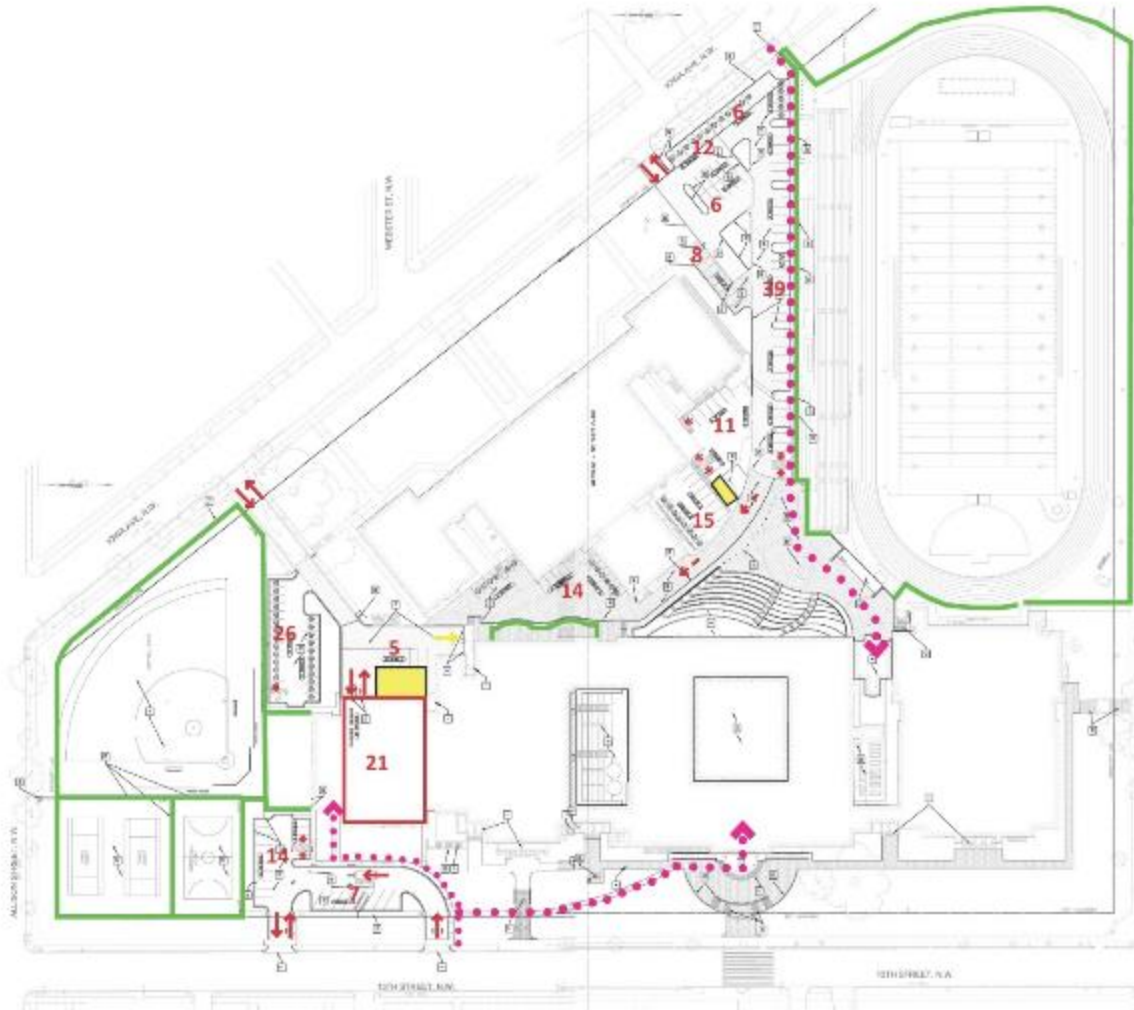
The design achieves these goals, fulfills the educational specifications created with the faculty and staff, and responds to the design principles established by the design-build team.







AERIAL VIEW FROM 13TH STREET, NW



SITE PLAN

◆ ACCESSIBLE PATH

12 PARKING SPACE
(184 TOTAL: 132 RHS, 52 MACFARLAND)

* ACCESSIBLE PARKING SPACE

■ DUMPSTER LOCATIONS

— FENCE



EAST ELEVATION



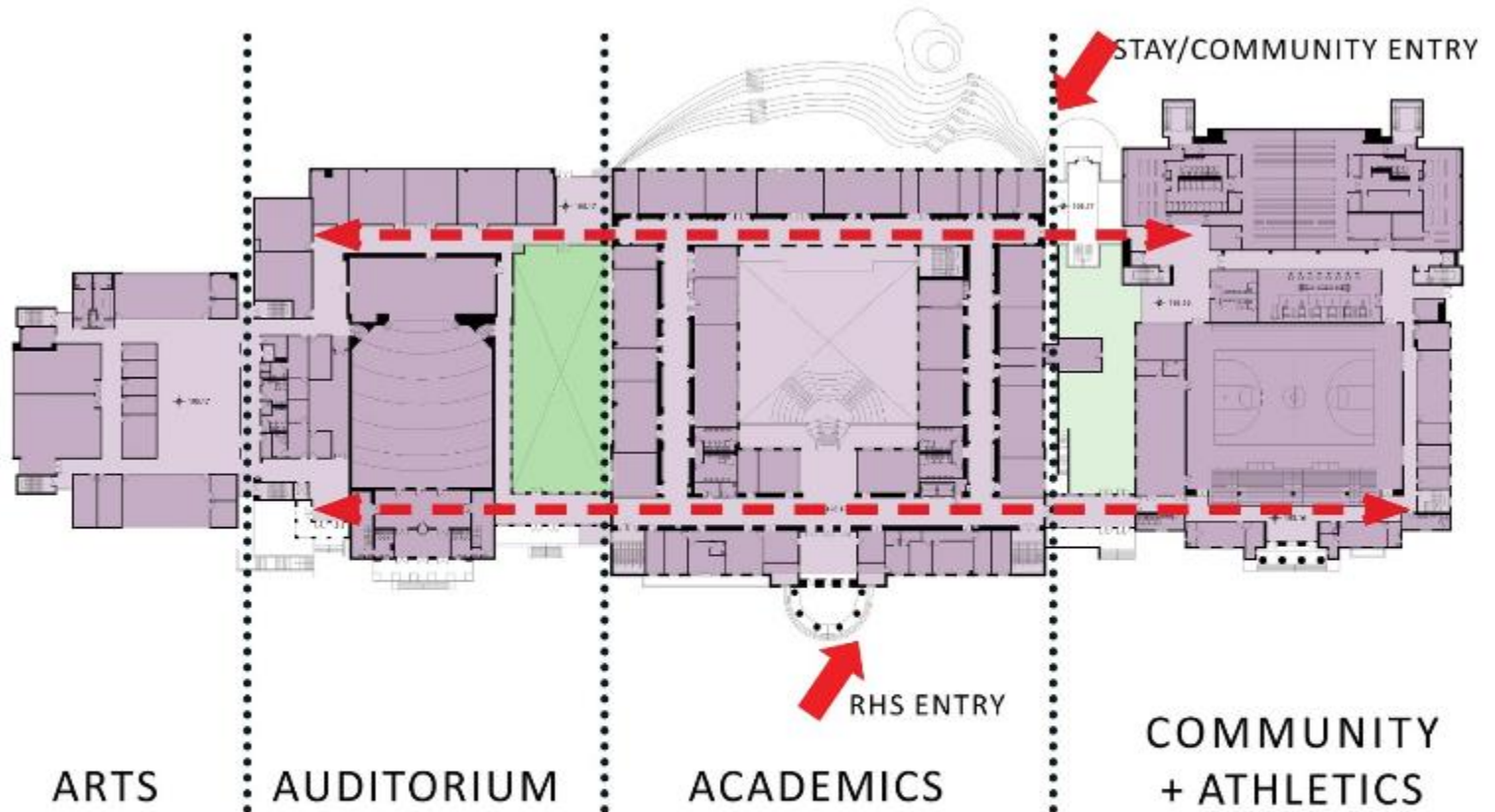
WEST ELEVATION (13TH STREET, NW)



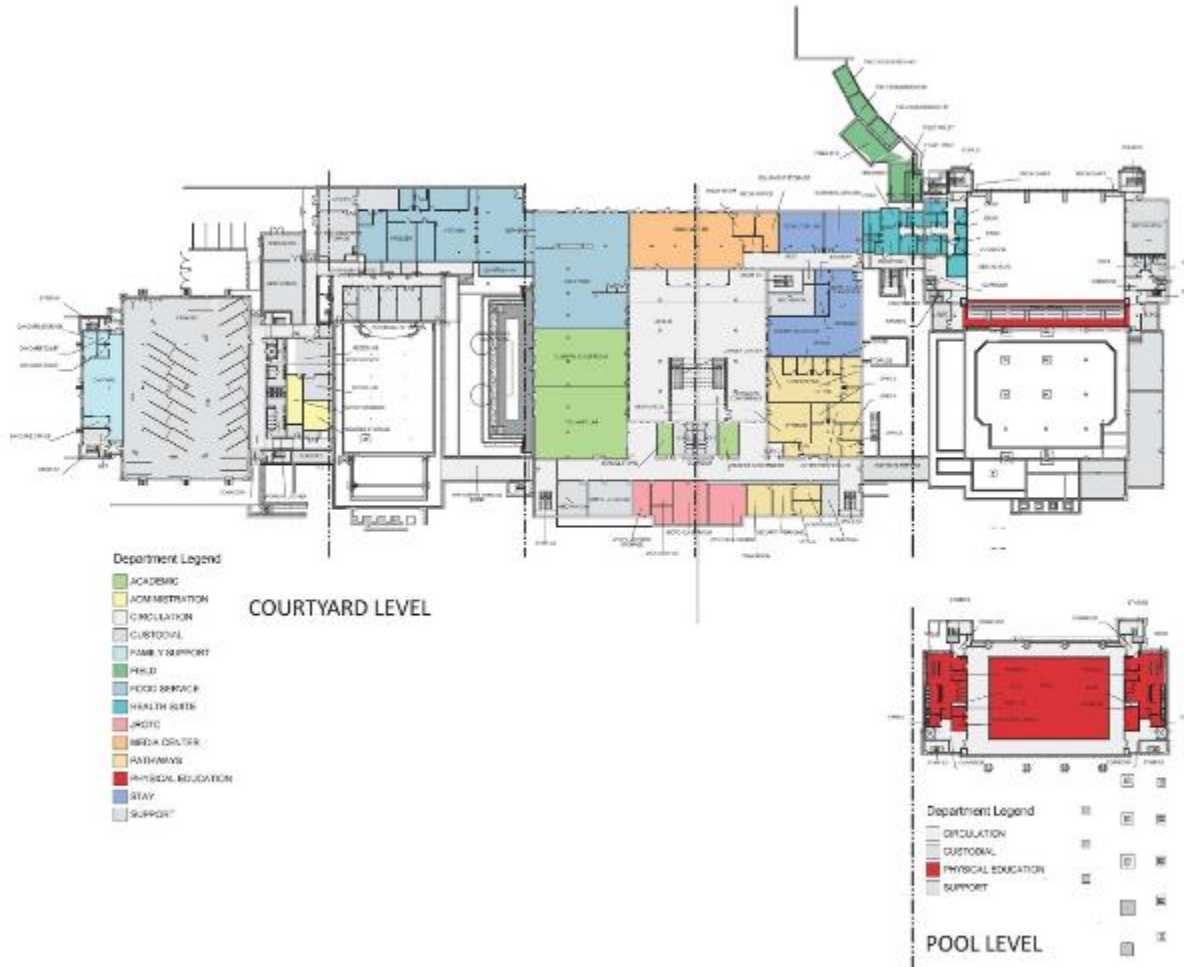
NORTH ELEVATION



SOUTH ELEVATION

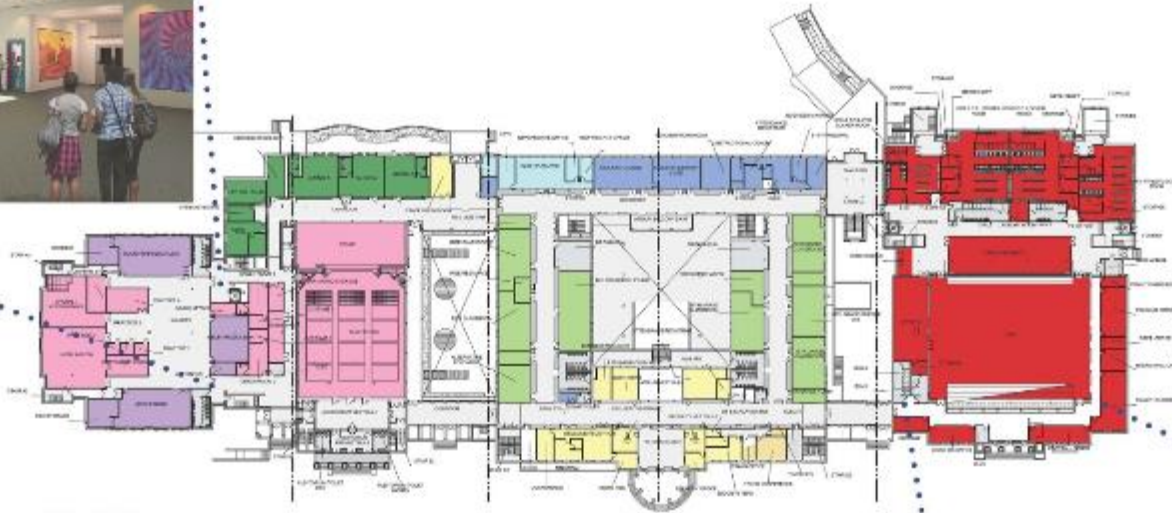


BUILDING ORGANIZATION





The Gallery



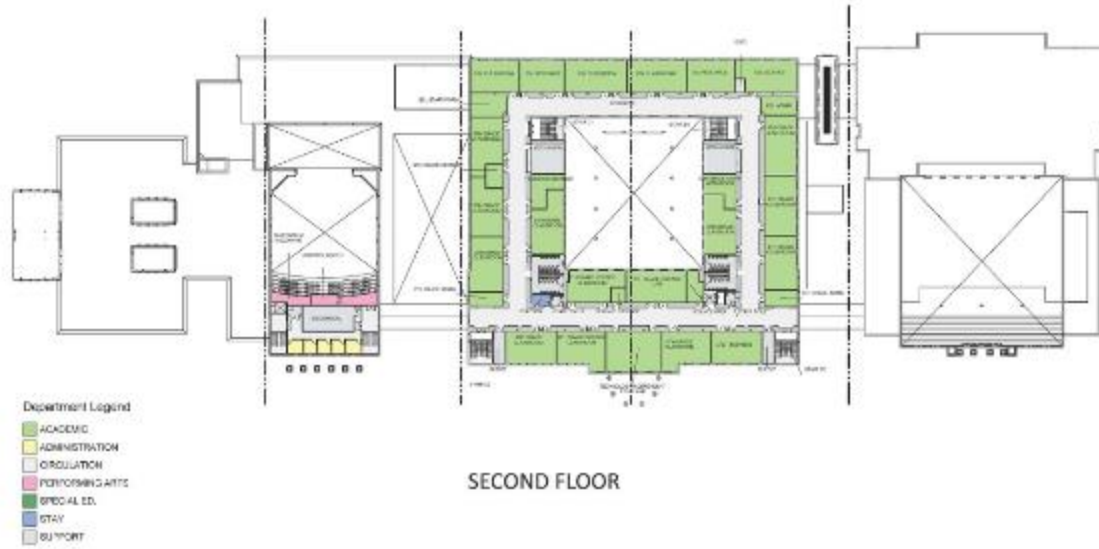
Department Legend

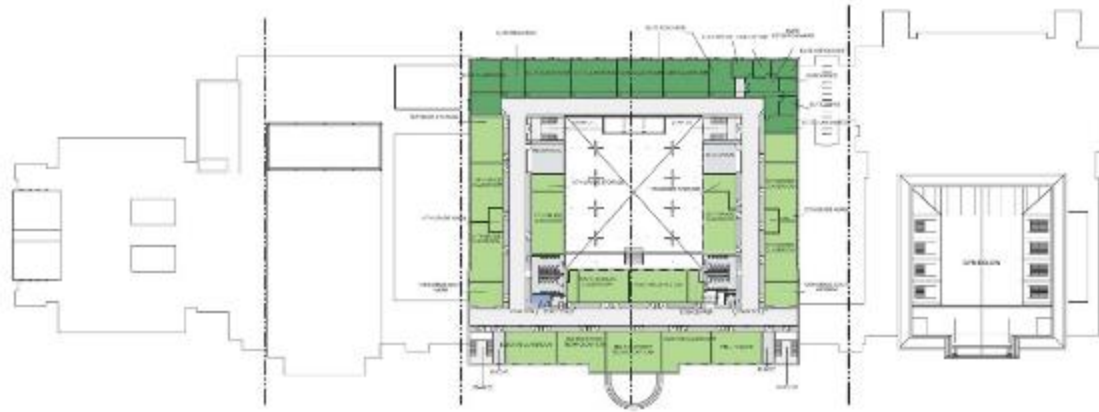
- ACADEMIC
- ADMINISTRATION
- CIRCULATION
- FAMILY SUPPORT
- PATHWAYS
- PERFORMING ARTS
- PHYSICAL EDUCATION
- PROVIDE EEI
- STAY
- SUPPORT
- VISUAL ARTS

FIRST FLOOR



The Milk House





Department Legend

- ACADEMIC
- COURTNEY
- SPECIAL ED.
- STAY
- SUPPORT

THIRD FLOOR



Perkins Eastman DC

Roosevelt High School Modernization

NCPC Submission
June 2014



VIEW OF THE "PAVILION" FROM THE NEW EAST PLAZA



THE PAVILION



VIEW TOWARDS THE PAVILION FROM THE STADIUM



The Pavilion will serve as the new entrance for the evening DCPS S.T.A.Y. program, as the entrance and security check-point for after hours events in the Gymnasium, and as the community entrance for the Pool and Health Clinic