

THE INDEPENDENCE ARCH

American Design Honoring 14,000 Civil War Veterans and America's Armed Forces Who Preserved America's Freedom



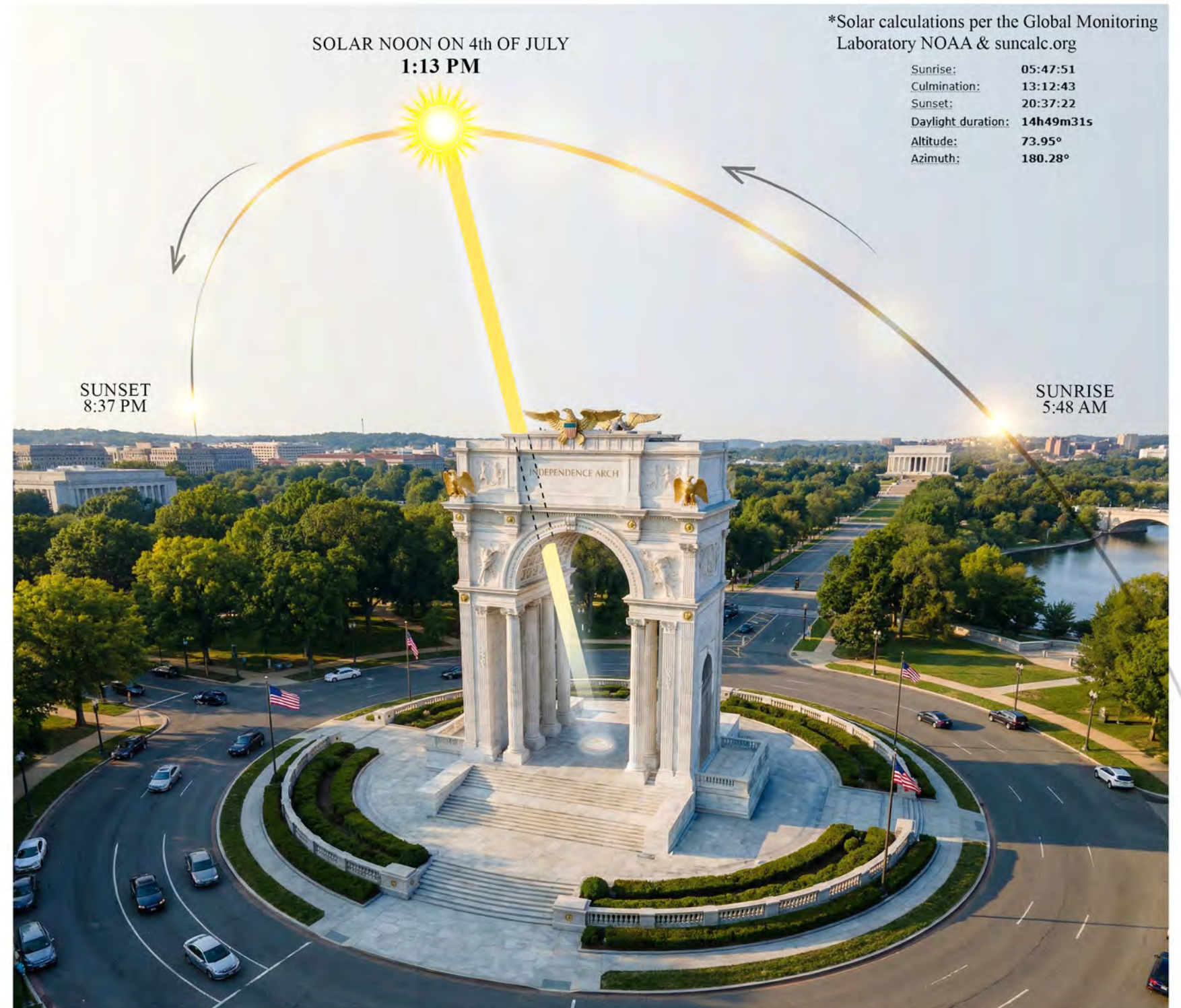
Interactive Architecture... An Annual Alignment of Light and Liberty

Only on **July 4th** at solar noon (approximately 1:13 PM EDT), the sun reaches its maximum annual altitude of roughly 74 degrees from the South in Washington, DC. At this moment, a circular roof oculus admits a concentrated beam of light through a specific diameter tube that reaches a calibrated stone datum at the floor, marking the anniversary through alignment with natural solar geometry rather than applied symbolism.

The circular illumination occurs only at the anniversary alignment. At other times, the light deforms or disappears, reinforcing independence as a condition achieved through alignment rather than permanence."



Site: Memorial Circle, a traffic circle located at the Virginia-side entrance of the Arlington Memorial Bridge.



An annual analysis of the July 4th sun path in Washington, DC, highlighting the specific solar altitude at 1:13 PM. At this exact time, the tubular structure is configured with a 16° tilt from the vertical to achieve direct alignment with the incoming solar beam.



The sunlight passes through the Arch's roof in a time frame of about 20 min, once a year

In this way, the monument becomes an interactive civic instrument, without any mechanism or human intervention, marking Independence Day as a shared national event and reminding Americans each year that freedom is not static, but continually renewed, echoing the enduring promise of a ...

“ New birth of freedom ”

This will become a global event, drawing the attention of all nations to this historic moment every year. This will demonstrate that..

We are the biggest, most powerful nation.



10-foot Circular stone datum aligned to receive the solar beam at July 4th solar noon



Aerial view perspective showing the sunbeam reaching the floor through the Arch roof and highlighting the stone datum within the Arch shadow

Rather than drawing from traditional precedents, the design deliberately avoids direct resemblance to monuments such as the Arc de Triomphe, instead establishing a new and uniquely American civic form. Symbolic elements, including the American eagle, are thoughtfully integrated to convey strength, unity, and progress, positioning the monument as a lasting national icon and a defining cultural achievement of its time.

250 ft.

164 ft.



ARC DE TRIOMPHE
PARIS

PROPOSED ARCH
WASHINGTON, DC

ALTERNATIVE PROPOSAL
WASHINGTON, DC

How the independence arch will connect the relationship between the arlington national cemetery and lincoln memorial?

The proposal is developed as a distinct architectural solution that departs from traditional precedents while maintaining clarity of form, proportion, and constructability. The alternative proposal arch is designed with a reduced base mass to enhance spatial openness and preserve key axial relationships within the site.

250 ft.



PROPOSED ARCH

*Base mass proportion is about
66% Solid to 33% void

← MASS
COVERAGE
PROPORTION →



ALTERNATIVE PROPOSAL

*Reduced base mass proportion is about
30% Solid to 70% void
- More opening, more visibility -

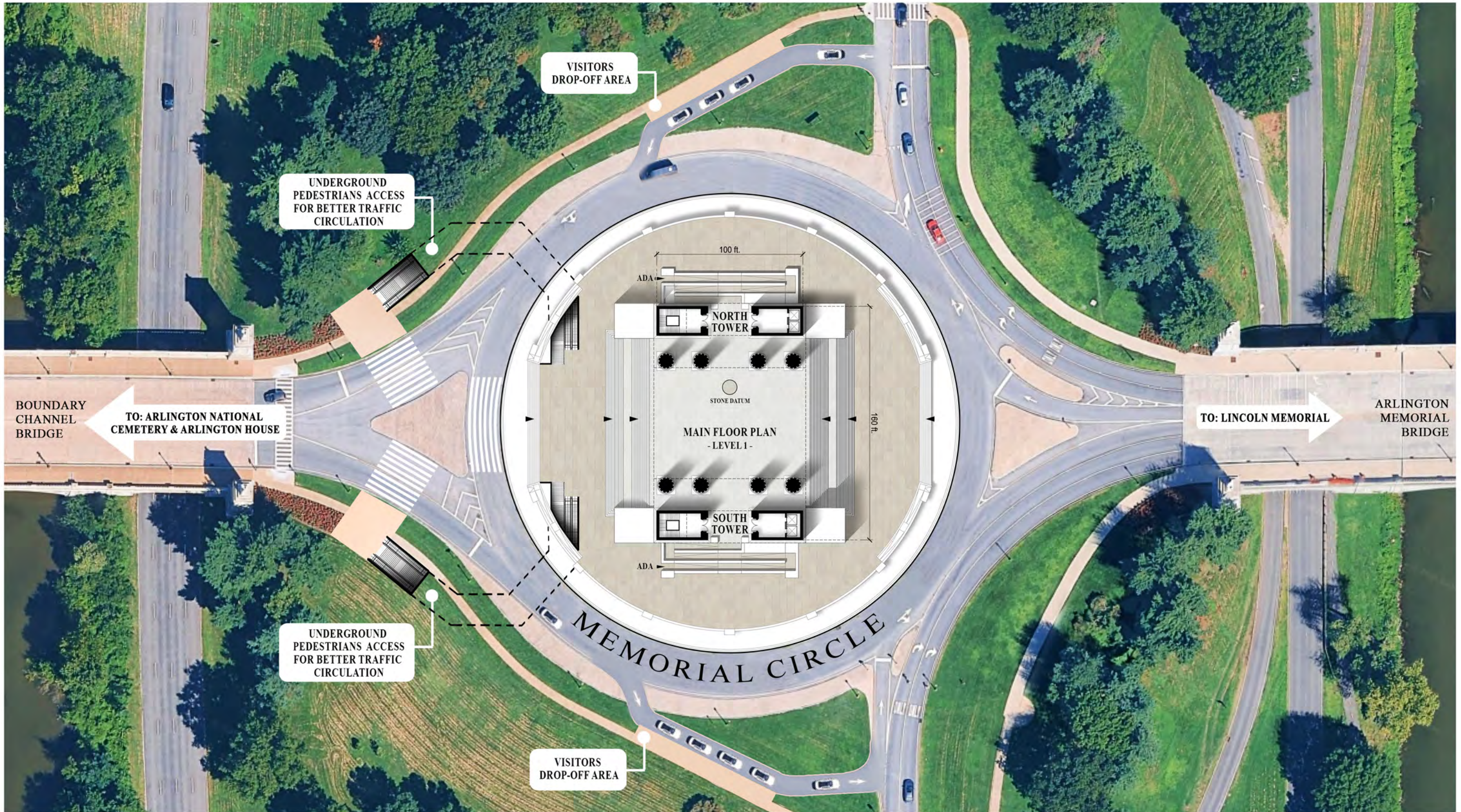


▲ Before

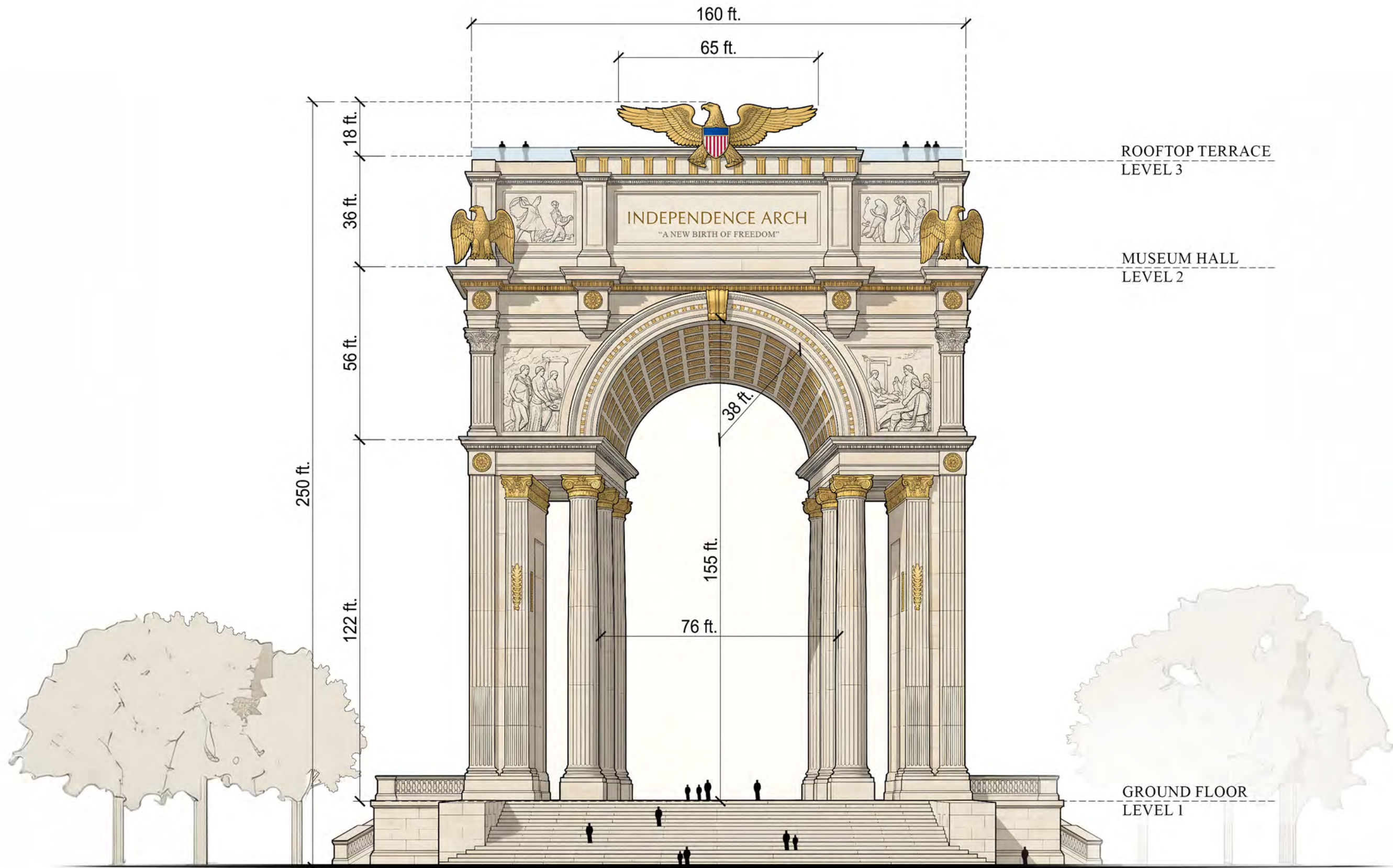
◀ After

The view from the Lincoln Memorial and the Arlington Memorial Bridge reveals the visual relationship among the Arch, Arlington House, and Arlington National Cemetery.

The proposed Arch enhances the significance of these existing landmarks by framing them within a unified civic composition, reinforcing their prominence and drawing focused attention to their symbolic and visual importance.



SITE PLAN

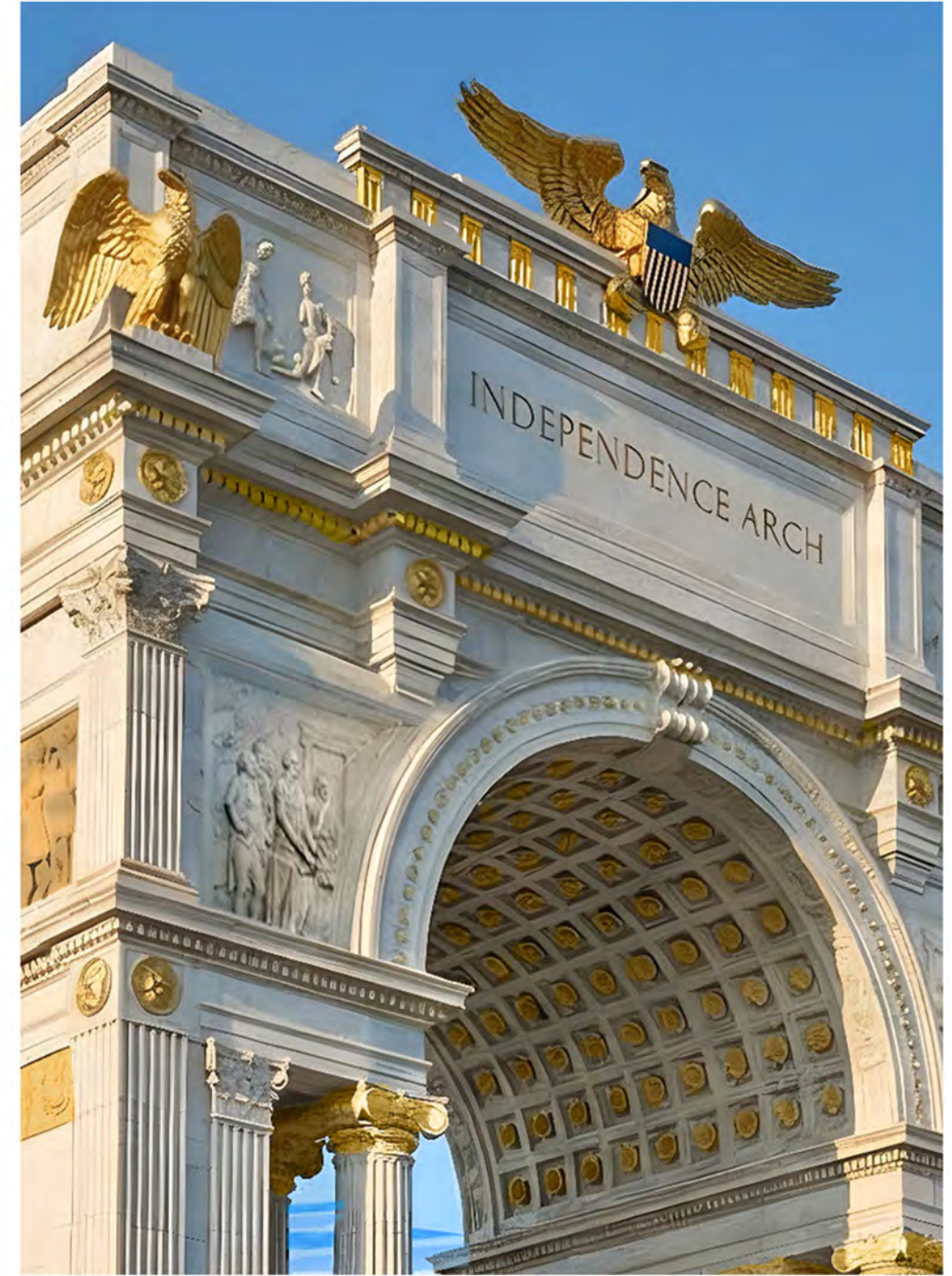


FRONT ELEVATION



THE GRAND MUSEUM ATRIUM

Exhibition Hall: Features artifacts, documents, historical exhibits, and media screens detailing the history of the monument and its sculptures. (maximum occupancy is 250 people)



The wall surfaces of the Arch incorporate finely carved marble reliefs, restrained gilded accents, and engraved portraits that interpret pivotal moments surrounding the signing of the Declaration of Independence. Executed with classical discipline and material restraint, these elements are integrated into the architectural structure rather than applied as decoration. The artwork honors the individuals, debates, and resolutions that shaped the founding, while preserving the monument's overall clarity, dignity, and civic permanence.



Side view perspective showing more details on the side elevations



PHYSICAL MODEL



Night view shot showing the effects of architectural and landscape lighting. Overall mood conveys solemnity, permanence, and national presence that is historically appropriate.



THE INDEPENDENCE ARCH

DESIGN AND VISUALIZATION BY



ME Innovations
Design . Architecture . 3D Visualization

Shady Migally

IF NEEDED, WE MIGHT PREPARE MORE INFORMATION, STUDIES, AND DETAILS FOR THE FEDERAL / CIVIC REVIEW,
OR PROVIDING MORE PHOTOS / VIDEOS WILL BE AVAILABLE UPON REQUEST

