



## Executive Director's Recommendation

Commission Meeting: December 4, 2025

---

<b>PROJECT</b> <b>Women's Suffrage National Monument</b> Washington, DC	<b>NCPC FILE NUMBER</b> 8699
<b>SUBMITTED BY</b> United States Department of the Interior, National Park Service	<b>NCPC MAP FILE NUMBER</b> 00:00(73.10)46084
<b>REVIEW AUTHORITY</b> Commemorative Works per 40 U.S.C. § 8905	<b>APPLICANT'S REQUEST</b> Approval of comments on site selection
	<b>PROPOSED ACTION</b> Approve comments on site selection
	<b>ACTION ITEM TYPE</b> Staff Presentation

---

### PROJECT SUMMARY

The National Park Service (NPS) in collaboration with the Women's Suffrage National Monument Foundation (Foundation), the project sponsor, has submitted a site selection study for the Women's Suffrage National Monument. In December 2020, Public Law 116-217 authorized the establishment of a commemorative work in the District of Columbia to commemorate the women's suffrage movement and the passage of the 19th Amendment to the U.S. Constitution. The Commemorative Works Act (40 U.S.C. §8901) (CWA) defines approval requirements related to the location, design, and construction of commemorative works in the District of Columbia and its environs. The CWA prohibits commemorative works within the Reserve unless authorized by congressional legislation. However, Congress passed H.R. 1318, authorizing the monument to be located on the National Mall within the Reserve. This exception was formalized with the enactment of Public Law 118-226, the Women's Suffrage National Monument Location Act, on January 4, 2025.

The Foundation, along with NPS, developed a series of site selection criteria in order to evaluate potential locations for the proposed memorial. The site selection study analyzed 14 potential monument sites for their suitability based on the Foundation's monument themes, program, and these criteria. The applicant team is seeking a site that will accommodate a landscape design approach with commemorative features that will be integrated into, and in conversation with, other memorials that highlight the nation's founding constitutional history and democratic ideals. Eight sites were shortlisted for consideration and after additional rounds of evaluation, including consultation with the National Capital Memorial Advisory Commission (NCMAC), four were selected for further study: Constitution Gardens West, Constitution Gardens East, Hockey Fields East, and Washington Monument South. Of these four sites, the monument sponsor's preferred location is Constitution Gardens West.

The Commission is not formally approving a location or memorial design at this stage of the process. Rather, NCPC is providing planning comments that weigh the opportunities and challenges of locating the memorial at each of the proposed sites. The NPS and Foundation will take NCPC's comments into account as well as those received from the U.S. Commission of Fine Arts (CFA) and interested stakeholders as they work to narrow down the potential location(s) for the memorial and develop design concepts. The Foundation plans to hold a design competition to identify and select a monument design. The applicant will then return to the Commission for concept review of the memorial design.

## KEY INFORMATION

- The Commemorative Works Act (CWA) outlines requirements for building commemorative works on federal lands within the District of Columbia and its environs. It applies to lands under jurisdiction of the U.S. Department of the Interior (DOI) and the US General Services Administration (GSA).
- In general, in accordance with the CWA, the key benchmarks for authorizing a new monument are summarized below:
  - (1) Congress authorizes each new monument purpose (subject) and a monument sponsor by separate federal law.
    - Public Law 116-217 authorized the establishment of a commemorative work in the District of Columbia to commemorate the women's suffrage movement and the passage of the 19th Amendment to the Constitution.
    - Public Law 118-226, enacted Jan 4, 2025, authorizes the Women's Suffrage National Monument to be located within the Reserve, which is defined by the CWA as the cross-axis of the National Mall in the District of Columbia, which generally extends from the United States Capitol to the Lincoln Memorial, and from the White House to the Jefferson Memorial.
  - (2) The sponsor consults with the National Capital Memorial Advisory Commission (NCMAC) on alternative sites and design concepts.
    - The Foundation presented the site selection study with four sites for comment to NCMAC on May 12, 2025. Additional study of the 14th Street and Independence Avenue, SW site was presented on June 23, 2025, and that site was recommended for dismissal.
    - Commissioners generally agreed with the monument sponsor that the Constitution Gardens West site appears to be the most suitable location for the monument, though the topography and landscape of the site, as well as the linear layout, would require thoughtful and sensitive design.
  - (3) NCPC and CFA must each approve the site and design for new commemorative works.
    - The site selection analysis of potential memorial locations is an early step towards these approvals.

- 
- CFA reviewed the potential sites in the site selection study on September 18, 2025 and voted to advance the Constitution Gardens West site.
  - (4) DOI or GSA, as appropriate, must approve and permit the final site and design for each new memorial, after the steps above are completed.
  - All four sites are under the jurisdiction of NPS. NPS opened a public comment period regarding site selection from September 8 through October 8, 2025, and held a public meeting on September 9.
  - The Foundation envisions the monument to be a landscaped design with commemorative features and plans to hold a design competition to select a monument design.
- 

## RECOMMENDATION

The Commission:

**Approves** the following comments on the site selection study for the Women's Suffrage National Monument.

**Notes** Public Law 118-226, the Women's Suffrage National Monument Location Act enacted on January 4, 2025, authorizes the monument to be located within the Reserve on the National Mall. All four sites under Commission consideration are within the Reserve.

**Notes** all sites are located within important historic and cultural landscapes. The applicant will explore applicable steps to avoid, minimize, or mitigate impact to historic properties through the Section 106 consultation process.

**Notes** the applicant seeks a landscape design approach to the memorial. According to the applicant, the site should be large enough to effectively accommodate the high number of visitors expected, within a 20-minute walk of a Metrorail station and require minimal new infrastructure. The site should be in proximity to facilities that support the visitor experience such as restrooms and food service.

### *Constitution Gardens West Site*

**Notes** the Commission approved phase two of the Constitution Gardens rehabilitation project in March 2024. The proposed Constitution Gardens West site includes portions of the rehabilitation project area that were planned for upgrades.

**Notes** in terms of accessibility, the Constitution Gardens West site is less than a mile walk from the Farragut West Metrorail Station and approximately a one mile walk from the Smithsonian Station. Constitution Avenue, NW provides opportunities for pick-up and drop-off to the memorial.

**Finds** the Constitution Gardens West site has the strongest thematic nexus of the final four sites studied by locating a monument commemorating the 19th Amendment to the U.S. Constitution on Constitution Gardens, a living legacy to the Constitution and founding of the republic. The site provides additional thematic connections to the 56 Signers of the Declaration of Independence Memorial and Vietnam Women's Memorial also located on Constitution Gardens, and a visual connection to the Washington Monument. The site is symbolically at the intersection of Constitution Avenue, NW and 19th Street, NW, referencing the 19th Amendment.

**Finds** a monument on this site has potential to complement the National Mall Plan and Constitution Gardens rehabilitation project vision for Constitution Gardens as a place full of activity throughout the day, night and in all seasons by attracting additional visitors to this destination on the National Mall; and therefore, **supports** advancing Constitution Gardens West for further evaluation.

**Finds** a monument on the west side of the Constitution Gardens Lake would have minimal impact on the approved rehabilitation project. This portion of the project area is adaptable as it was planned for passive uses and includes upgrades to the lake path, planting areas, and new seating.

**Supports** further exploration of the nodal landscape design approach which has potential to align well with the naturalistic landscape setting of Constitution Gardens and **recommends** close coordination with NPS and the Trust for the National Mall to ensure the design integrates into the rehabilitation plans for the lake area landscape previously approved by the Commission.

#### *Constitution Gardens East Site*

**Notes** the Commission-approved Constitution Gardens rehabilitation project includes improvements to the east portion of the lake including an updated event plaza and terraces that are planned to be a major draw for visitor programming. The site is also proposed for a future visitor pavilion in the next phase of Constitution Garden improvements.

**Finds** that while the thematic nexus is similar to Constitution Gardens West, the Constitution Gardens East site should be dismissed from further consideration due to conflicts with the approved plans for event programming and visitor spaces on this portion of Constitution Gardens.

#### *Hockey Fields East Site*

**Notes** the site offers an open and expansive area for memorial design with clear visibility of the Washington Monument.

**Notes** the site is currently used for a variety of recreational purposes, as one of the few open spaces of significant size in this part of the National Mall.

**Finds** the Hockey Fields East site's current programming for recreational uses should be maintained, and the site should be dismissed from further consideration.



---

*Washington Monument South Site*

**Notes** the Washington Monument South site is an unprogrammed area located along a grove of trees at the edge of the monument grounds and adjacent to the proposed Sylvan Theater improvement area, which will include an amphitheater and visitor amenities. The site is within a 0.5-mile walk of the Smithsonian Metrorail Station. However, pick-up and drop-off areas are more limited at this site.

**Notes** the site is in close proximity to the 14th Street and Independence Avenue, SW block which the Smithsonian Institution has identified as their preferred location for the future American Women's History Museum.

**Finds** the site has a strong thematic nexus by commemorating the contributions of women in a prominent central location of national significance near the crossing of the primary vistas of the National Mall.

**Finds** that while the overall site area is approximately the same, the site's dimensions are less constrained than the Constitution Gardens West site, allowing for greater design flexibility. However, the proposed monument may be incompatible with the open turf lawn setting of the Washington Monument Grounds. Additionally, plans for the adjacent Sylvan Theater project have not been finalized leaving the compatibility with that design unknown. Further conceptual design analysis would be needed to ensure appropriateness for this site.

**Recommends** that if the Constitution Gardens West site is deemed infeasible after initial design study, the applicant should consider further evaluation of the suitability of the Washington Monument South site for conceptual design.

**Recommends** that, if this site is advanced, any design alternatives on this site be limited in height to respect the surrounding viewsheds to the Washington Monument.

*Monument Design Development*

**Notes** the Women's Suffrage National Monument Foundation (Foundation) plans to hold a design competition to identify and select a monument design.

**Encourages** the applicant to ensure the competition brief emphasizes the design will undergo iterative review by NCPC and other agencies, and the sponsor may consider consultation with NCPC and other stakeholders during the development of the competition brief and design finalist selection.

**Recommends** the applicant consider shade and seating areas for visitor comfort and integrate universal design principles into the site design. The monument's commemorative elements should be limited in height to maintain existing viewsheds and prevent encroachment into the setting of surrounding memorials.

**Recommends** the sponsor consider including spaces for children in the design to accommodate families and school groups visiting the National Mall, particularly if Constitution Gardens West is advanced.

**Recommends** that as the landscape plans are developed, the applicant should consider policy guidance in the Comprehensive Plan Federal Environment Element regarding tree removal, tree replacement, and the selection of plants that support pollinators, where appropriate (FE.G.1, FE.G.2, and FE.G.11).

## PROJECT REVIEW TIMELINE

<b>Previous actions</b>	– None.
<b>Remaining actions</b> (anticipated)	<ul style="list-style-type: none"><li>– Review of concept monument design(s) within proposed site(s)</li><li>– Approval of preliminary monument and site development plans</li><li>– Approval of final monument and site development plans</li></ul>

## PROJECT ANALYSIS

### Executive Summary

Staff analyzed the proposed sites using guidance in the Commemorative Works Act (CWA), the *Comprehensive Plan for the Nation's Capital*, the 2010 National Mall Plan, and in consideration of the applicant's site selection criteria. After evaluation, two of the shortlisted sites under Commission review, Constitution Gardens East and Hockey Fields East, were determined less suitable for the proposed monument due to conflicts with existing uses, context, and approved future plans. Of the two remaining sites, the Constitution Gardens West site provides the clearest opportunity to integrate a commemorative work into the existing open space while enhancing the character of its surrounding context, and this site is most suitable to fulfill the applicant's site selection criteria. However, the unique configuration of the site will require further design analysis to determine feasibility.

### Analysis

As mentioned previously, while the CWA prohibits location of commemorative works within the Reserve, the Women's Suffrage National Monument Location Act authorizes the monument to be located on the National Mall. All four sites under Commission consideration are within the Reserve, and under NPS jurisdiction. In addition to approval requirements regarding location, The CWA includes decision criteria for site approval:

- Surroundings – to the maximum extent possible, a commemorative work shall be located in surroundings that are relevant to the subject of the work.
- Location – a commemorative work shall be located so that it does not interfere with or encroach on, an existing commemorative work, and to the maximum extent practicable, it protects open space, existing public use, and cultural and natural resources.

NPS and the Foundation have also established site selection criteria:

- Program Suitability: The site should accommodate a landscaped design, including commemorative features, that tell the story of the women's suffrage movement from a diversity of perspectives. The site should be bright and inviting. The site must be large enough to effectively accommodate the scope and scale of the story the monument will tell and welcome the high number of visitors expected.
- Integration into Monumental Core: The site should be integrated into, and in conversation with, memorials that highlight founding constitutional history and democratic ideals of our Republic.
- Thematic Nexus: The site should physically and thematically connect to the founding principles and history of the Nation's democracy, while also conceptually bringing those ideas into modern times.
- Addition to Washington, D.C.'s Commemorative Landscape: The placement of the monument should add to the commemorative fabric of Washington, D.C., invite visitors to better understand our Nation's democracy, and broaden the telling of our country's rich and diverse history without removing or diminishing established memorials.
- Implementation Coordination: Allow for collaboration with other site stakeholders and be independent of other plans for the monument site that could substantially delay implementation.
- Infrastructure: The site should require minimal new infrastructure, such as roadway improvements or utility extensions.
- Safety and Security: The site should enable a welcome, celebratory, and safe experience, with special attention to families, school groups, and pedestrians.
- Site Access: The public should be able to continually access the site, except for related special events. The site should not be closed off regularly due to security requirements.
- Accessibility and Proximity to Transit: The site should be within a 20-minute walk of a Metrorail station. The site should be accessible to pedestrians, transit (tour buses, city buses, and Metrorail), and visitors to the Nation's Capital.
- Support Facilities: The site should be in proximity to support facilities, such as restrooms, food service, and event space.

The following sections provide analysis of the opportunities and constraints for each of the proposed sites in accordance with the aforementioned CWA guidance on siting commemorative works, the site selection criteria established by the applicant, and other NCPC plans and policies. Additionally, design considerations are outlined for the proposed monument as the project is developed.

---

*Constitution Gardens West Site*

Constitution Gardens is located on the National Mall along Constitution Avenue, NW with the Vietnam Veterans Memorial at its west end, and the World War II Memorial and the Lincoln Memorial Reflecting Pool immediately adjacent to the south. In March of 2024 the Commission approved phase two of the Constitution Gardens rehabilitation project which will improve the condition of the lake and create inviting spaces for the public that respect the original design. The Constitution Gardens West Site is a c-shaped area located along the west side of the existing lake that is approximately 2 acres, with three smaller nodes ranging from 0.2 to 0.25 acres. A monument on the west side of the Constitution Gardens Lake would have minimal impact on the approved rehabilitation project. This portion of the project area is adaptable as it was planned for passive uses and includes upgrades to the lake path, planting areas, and new seating. In terms of accessibility, the Constitution Gardens West site is less than a mile walk from the Farragut West Metrorail Station and approximately a one mile walk from the Smithsonian Station. Constitution Avenue, NW provides opportunities for pick-up and drop-off to the memorial.

The Constitution Gardens West site has the strongest thematic nexus of the final four sites studied by locating a monument commemorating the 19th Amendment to the U.S. Constitution on Constitution Gardens, a living legacy to the Constitution and founding of the republic. The site provides additional thematic connections to the 56 Signers of the Declaration of Independence Memorial and Vietnam Women's Memorial also located on Constitution Gardens, and a visual connection to the Washington Monument. The site is symbolically at the intersection of Constitution Avenue, NW and 19th Street, NW, referencing the 19th Amendment.

Despite being located amongst several prominent commentative works, Constitution Gardens does not receive the significant foot traffic of many other locations on the National Mall. A monument on this site would complement the vision for Constitution Gardens included in the 2010 National Mall Plan and Constitution Gardens rehabilitation project as a place full of activity throughout the day, night and in all seasons by attracting additional visitors to this destination on the National Mall; and therefore, staff recommends **the Commission support advancing Constitution Gardens West for further evaluation.**

As the conceptual designs for the site are further developed, staff recommends **the Commission support further exploration of the nodal landscape design approach which has potential to align well with the naturalistic landscape setting of Constitution Gardens.** In order to ensure compatibility with the restoration project planned for Constitution Gardens, staff recommends **the Commission recommend close coordination with NPS and the Trust for the National Mall to ensure the design integrates into the rehabilitation plans for the lake area landscape previously approved by the Commission.**

*Constitution Gardens East Site*

The Commission-approved Constitution Gardens rehabilitation project includes improvements to the east portion of the lake including an updated event plaza and terraces that are planned to be a major draw for visitor programming. The site is also proposed for a future visitor pavilion in the

next phase of Constitution Gardens improvements. The Constitution Gardens East site has an area of 2 acres located on the site of the event plaza, terraces, and proposed woodland garden areas with a 0.2-acre focal area. While the thematic nexus is similar to Constitution Gardens West, the Constitution Gardens East site should be dismissed from further consideration due to conflicts with the approved plans for event programming and visitor spaces on this portion of Constitution Gardens.

#### *Hockey Fields East Site*

The John F. Kennedy Hockey Fields are turf fields used for informal recreation located south of the Lincoln Memorial Reflecting Pool. The site is currently used for a variety of recreational purposes, as one of the few open spaces of significant size in this part of the National Mall. The National Mall Plan recommends the condition of the JFK Hockey Fields be improved and the fields be used for permitted recreation league use and infrequent use for permitted events. The Hockey Fields East site area is approximately 2 acres with a 0.5-acre focal area. While the site offers an open and expansive space for memorial design with clear visibility of the Washington Monument, the Hockey Fields East site's current programming for recreational uses should be maintained, and the site should be dismissed from further consideration.

#### *Washington Monument South Site*

The Washington Monument South site is an unprogrammed area located along a grove of trees at the on the southwest edge of the Washington Monument grounds and north of the Survey Lodge which serves as an NPS ranger station. The site is also adjacent to the proposed Sylvan Theater improvement area, which will include an amphitheater and visitor amenities. The Washington Monument site area is approximately 1.8 acres tucked next to the grove of trees on the southwest corner of the grounds with a 0.5-acre focal area oriented towards the Washington Monument. The site is within a 0.5 mile walk from the Smithsonian Metrorail Station; however, pick-up and drop-off areas are more limited at this site. The site is also in close proximity to the 14th Street and Independence Avenue, SW block which the Smithsonian Institution has identified as their preferred location for the future American Women's History Museum.

The site has a strong thematic nexus by commemorating the contributions of women in a prominent central location of national significance near the crossing of the primary vistas of the National Mall. While the overall site area is approximately the same, the site's dimensions are less constrained than the Constitution Gardens West site, allowing for greater design flexibility. However, the proposed monument may be incompatible with the open turf lawn setting of the Washington Monument Grounds. Additionally, plans for the adjacent Sylvan Theater project have not been finalized, leaving the compatibility with that design unknown. Further conceptual design analysis would be needed to ensure appropriateness for this site. As such, staff recommend **the Commission recommends that if the Constitution Gardens West site is deemed infeasible after initial design study, the applicant should consider further evaluation of the suitability of the Washington Monument South site for conceptual design.** In order to minimize impacts to this prominent location, staff recommends **the Commission recommend that, if this site is**

**advanced, any design alternatives on this site be limited in height to respect the surrounding viewsheds to the Washington Monument.**

### *Monument Design Development*

The Foundation plans to hold a design competition to identify and select a monument design. To help participating design teams understand the plan review process for commemorative works, Staff recommends **the Commission encourage the applicant to ensure the competition brief emphasizes the design will undergo iterative review by NCPC and other agencies, and the sponsor may consider consultation with NCPC and other stakeholders during the development of the competition brief and design finalist selection.** Attention should be given to policies in the Visitors and Commemoration, Historic Preservation, Urban Design, and Federal Environment Elements of the Comprehensive Plan as the design is developed. Staff recommends **the Commission request the next submission provide details about the physical relationship of the memorial to the surrounding context, including access and preservation of historic landscapes, and provide additional information about program needs.**

The Commission's recommendations for the overall Constitution Gardens rehabilitation project should also provide guidance for design elements within the monument site. Staff recommends **the Commission recommend the applicant consider shade and seating areas for visitor comfort and integrate universal design principles into the site design. The monument's commemorative elements should be limited in height to maintain existing viewsheds and prevent encroachment into the setting of surrounding memorials.** Additionally, as noted by the Commission in recommendations for the overall Constitution Gardens rehabilitation and in the applicant's site selection criteria, the monument should be welcoming to young people. Staff recommends **the Commission recommend the sponsor consider including spaces for children in the design to accommodate families and school groups visiting the National Mall, particularly if Constitution Gardens West is advanced.**

In accordance with Comprehensive Plan policy, staff recommends **the Commission recommend that as the landscape plans are developed, the applicant should consider policy guidance in the Comprehensive Plan Federal Environment Element regarding tree removal, tree replacement, and the selection of plants that support pollinators, where appropriate (FE.G.1, FE.G.2, and FE.G.11).**

## **CONFORMANCE TO EXISTING PLANS, POLICIES AND RELATED GUIDANCE**

### **Comprehensive Plan for the National Capital**

The planning and design comments included in this report are intended to ensure the proposal is not inconsistent with the *Comprehensive Plan for the National Capital*. Staff particularly considered policies in the Visitors and Commemoration, Historic Preservation, Urban Design, and Federal Environment Elements.

### **Commemorative Works Act**

The Commemorative Works Act (CWA) contains a set of foundational level decision criteria that NCPC is required to use when considering site and design proposals for commemorative works. Specifically, the CWA states that in considering site and design proposals, NCPC shall be guided by a number of criteria, including surroundings, location, material, landscape features, and site-specific guidelines. As noted above, the planning and design comments are designed to ensure the proposal broadly meets the CWA criteria.

### **National Historic Preservation Act**

NCPC and NPS each have an independent responsibility to comply with Section 106 of the National Historic Preservation Act (NHPA). NCPC has designated NPS as the lead federal agency for Section 106 consultation. NPS and the Foundation initiated consultation under Section 106 of the NHPA with the District of Columbia Historic Preservation Office (DC SHPO) on August 18, 2025.

### **National Environmental Policy Act**

NCPC and NPS each have an independent responsibility to comply with the National Environmental Policy Act (NEPA). NPS is the lead federal agency for the purposes of complying with NEPA. NCPC anticipates acting as a cooperating agency if an Environmental Assessment (EA) is prepared. However, the applicant may also explore whether a Categorical Exclusion is appropriate. With its current review and action, the Commission is only providing comments on the site selection for the project. As such, no other NEPA documentation is required at this time. Compliance will be completed prior to the Commission's action on the final site and memorial design

## **CONSULTATION**

### **Coordinating Committee**

The Coordinating Committee discussed the application at its September 10, 2025, meeting and without objection, the Committee forwarded the proposed comments on site selection to the Commission with the statement that the proposal was coordinated with all participating agencies. Section 106 consultation was initiated on August 20, so the DC SHPO has not yet had adequate time to review the prospective sites and identify their potential for effects on historic properties. However, the DC SHPO is coordinating conditioned upon completion of the Section 106 review process. The District Department of Energy and the Environment (DOEE) noted that it has no objection to any of the four sites being considered but encourages limiting the impact to existing trees as much as possible and preserving the existing tree canopy. They requested that the applicant reengage with DOEE when concept designs are developed. The participating agencies included NCPC, the District Department of Transportation, DOEE, the District Office of Planning, the DC

---

SHPO, the National Park Service, the Commission of Fine Arts, and the Washington Metropolitan Area Transit Authority.

**U.S. Commission of Fine Arts**

The U.S. Commission of Fine Arts (CFA) reviewed the site selection study for the Women's Suffrage National Monument at their September 18, 2025 meeting. A copy of the Commission letter is attached.

**ONLINE REFERENCE**

The following supporting documents for this project are available online at [www.ncpc.gov](http://www.ncpc.gov):

- Submission Package

Prepared by Laura Shipman  
11/24/2025

**POWERPOINT (ATTACHED)**



# Women's Suffrage National Monument

District of Columbia

Approval of Comments on Site Selection

United States Department of the Interior

# Project Summary

**Commission Meeting Date:** December 4, 2025

**NCPC Review Authority:** 40 U.S.C. § 8905

**Applicant Request:** Approval of Comments on Site Selection

**Session:** Staff Presentation

**NCPC Review Officer:** Laura Shipman

**NCPC File Number:** 8699

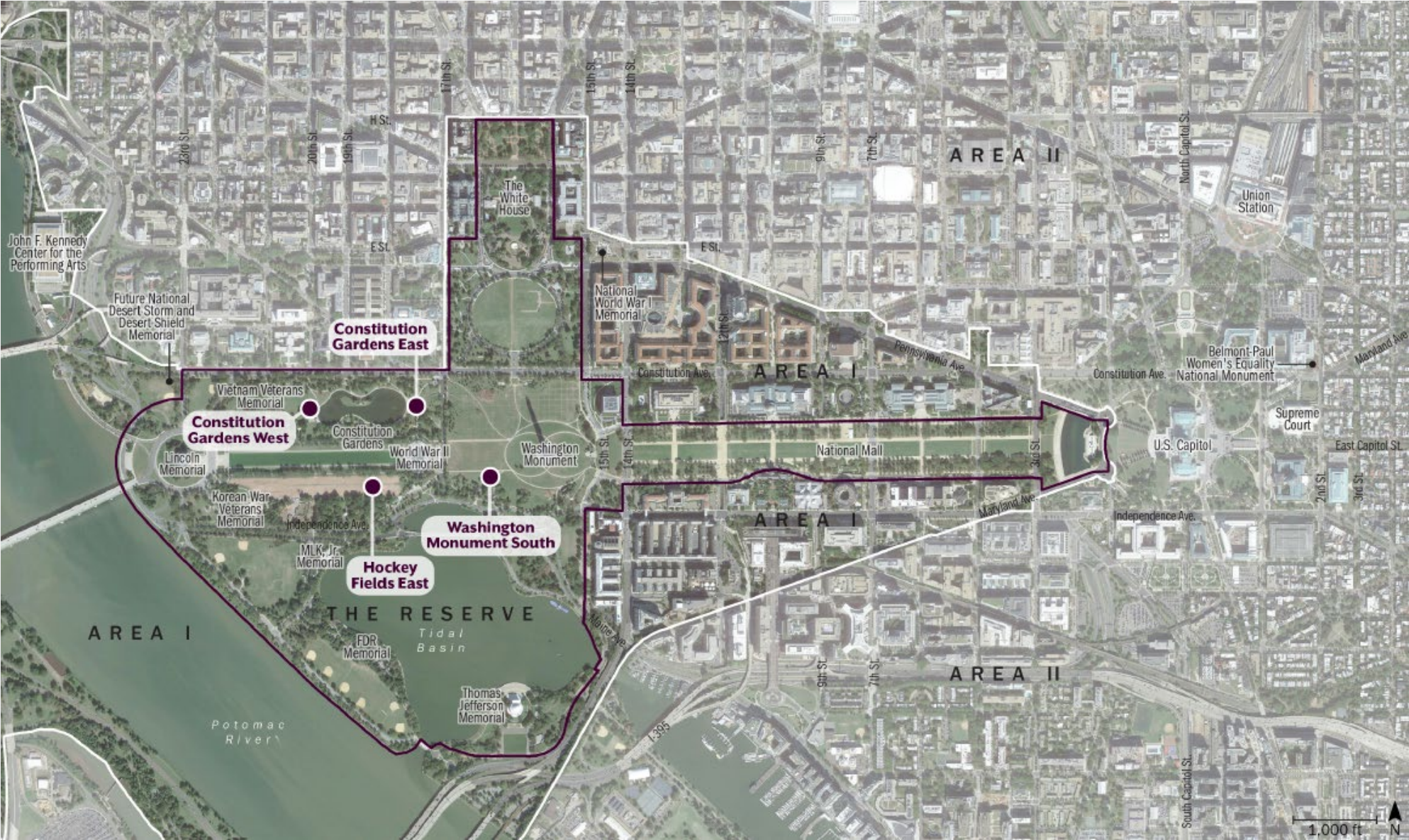
## Project Summary:

The National Park Service in collaboration with the Women's Suffrage National Monument Foundation (WSNMF) has submitted a site selection study for the Women's Suffrage National Monument. The Commemorative Works Act (CWA) prohibits commemorative works within the Reserve unless authorized by specific legislation. In the case of the Women's Suffrage National Monument, Congress passed H.R. 1318, directing that the memorial be located within the Reserve. This exception was formalized with the enactment of Public Law 118-226 on January 4, 2025. The site selection study analyzed 14 potential monument sites for their suitability based on the WSNMF's monument themes, program, and selection criteria. Eight sites were shortlisted for consideration, from which four were selected for further study: Constitution Gardens West, Constitution Gardens East, Hockey Fields East, and Washington Monument South.

Once a site has been secured, the WSNMF plans to hold a design competition to identify and select a monument design. The goals and program described in the study will provide the basis for direction for the competition.



# Potential Site Locations





# Goals

The goal of the Women's Suffrage National Monument Foundation is to build a monument on the National Mall that:

## GOAL 01

Weaves the great women of American history in amongst the giants of our founding story;

## GOAL 02

Ensures every girl and woman who visits the National Mall sees herself represented in the commemorative fabric of the most visited National Park in the United States;

## GOAL 03

Ignites curiosity in American women's history;

## GOAL 04

Fosters a deeper understanding of the women who shaped American democracy; and

## GOAL 05

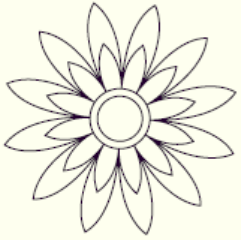
Inspires future generations in the continued pursuit of liberty and equality.

Pictured:

Suffrage envoys on their way to Washington, D.C. to present a petition to Congress containing more than 500,000 signatures, 1915.  
(Source: Library of Congress)



# Monument Themes and Program



## Monument Themes

THE WOMEN'S SUFFRAGE NATIONAL MONUMENT WILL ENHANCE THE NATIONAL MALL BY ESTABLISHING A MEMORIAL THAT:

- Weaves the great women of American history in amongst the giants of our national story;
- Stands shoulder-to-shoulder with the other renowned commemorative works on the National Mall;
- Inspires visitors to revere the role women played throughout American history in building, shaping, and expanding our democracy;
- Celebrates the role of our foremothers in building a more just and equal America;
- Tells a diverse and broad story of the fight for the 19th Amendment; and
- Encourages a continued investment in America's constitutional promise of freedom, justice, and equality for all.



## Monument Program

IN ORDER TO ACHIEVE THE GOALS OF THE MONUMENT, THE SITE SHOULD:

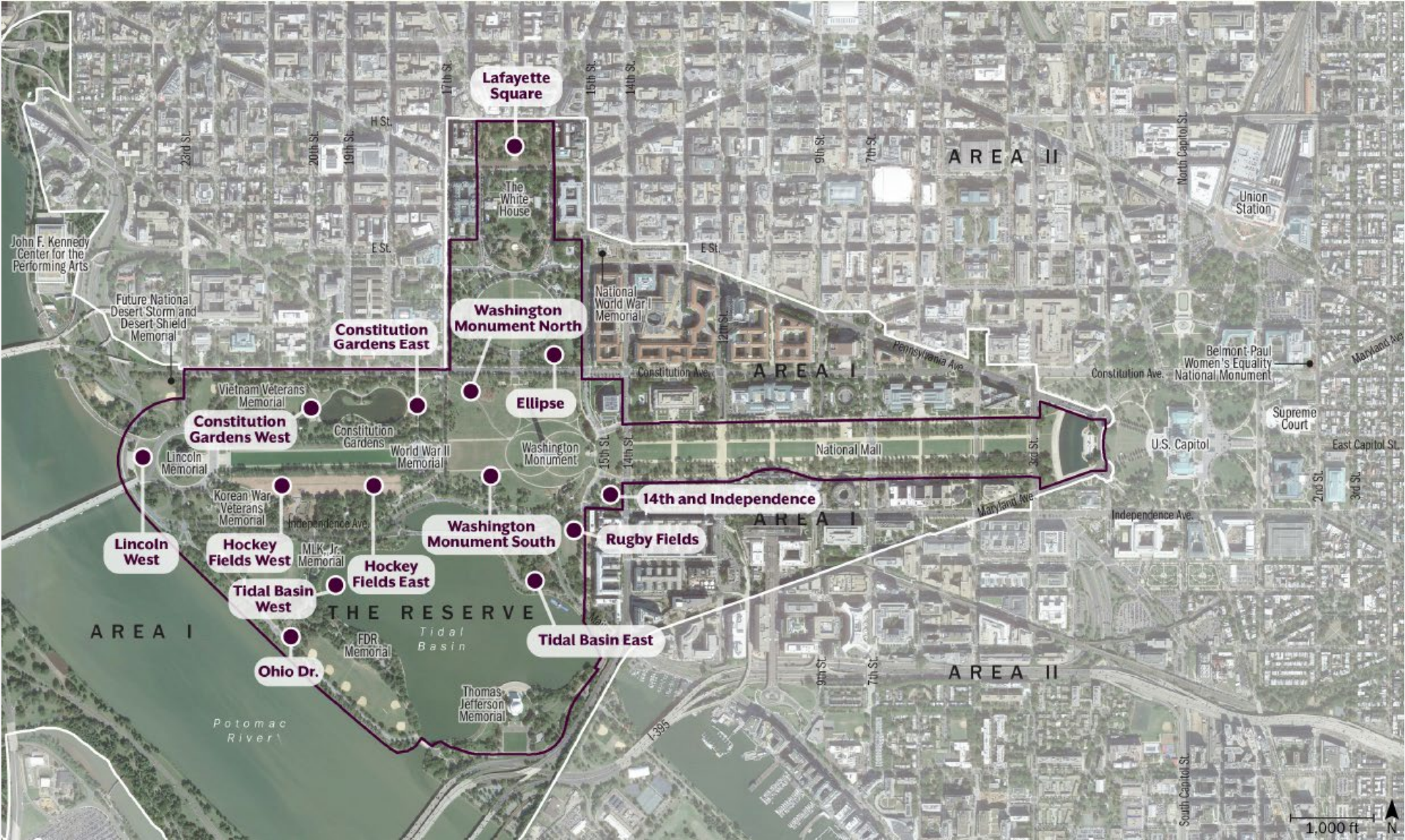
- Allow for landscaped garden that provides shade, flowers, seating, and gathering space for multigenerational groups;
- Accommodate true place-making and offer the opportunity to allow women's stories to be woven into the monumental fabric on the National Mall;
- Allow visitors to safely visit and participate in programming during the day and at night;
- Accommodate public programming, including discussions, commemorations, concerts, group tours, and ceremonies;
- Facilitate a transformative experience for all visitors, but especially school groups, multi-generational families, and civic organizations; and
- Provide the ability to interact with, and move through, the memorial.

# Site Selection Criteria

SITE SELECTION CRITERIA	DESCRIPTION
Program Suitability	The site should accommodate a landscaped design, including commemorative features, that tell the story of the women's suffrage movement from a diversity of perspectives. The site should be bright and inviting. The site must be large enough to effectively accommodate the scope and scale of the story the monument will tell and welcome the high number of visitors expected.
Integration into Monumental Core	The site should be integrated into, and in conversation with, memorials that highlight founding constitutional history and democratic ideals of our Republic.
Thematic Nexus	The site should physically and thematically connect to the founding principles and history of the Nation's democracy, while also conceptually bringing those ideas into modern times.
Addition to Washington, D.C.'s Commemorative Landscape	The placement of the monument should add to the commemorative fabric of Washington, D.C., invite visitors to better understand our Nation's democracy, and broaden the telling of our country's rich and diverse history without removing or diminishing established memorials.
Implementation Coordination	Allow for collaboration with other site stakeholders and be independent of other plans for the monument site that could substantially delay implementation.
Infrastructure	The site should require minimal new infrastructure, such as roadway improvements or utility extensions.
Safety & Security	The site should enable a welcome, celebratory, and safe experience, with special attention to families, school groups, and pedestrians.
Site Access	The public should be able to continually access the site, except for related special events. The site should not be closed off regularly due to security requirements.
Accessibility & Proximity to Transit	The site should be within a 20-minute walk of a Metrorail station. The site should be accessible to pedestrians, transit (tour buses, city buses, and Metrorail), and visitors to the Nation's Capital.
Support Facilities	The site should be in proximity to support facilities, such as restrooms, food service, and event space.



# Initial Range of Potential Sites in the Reserve



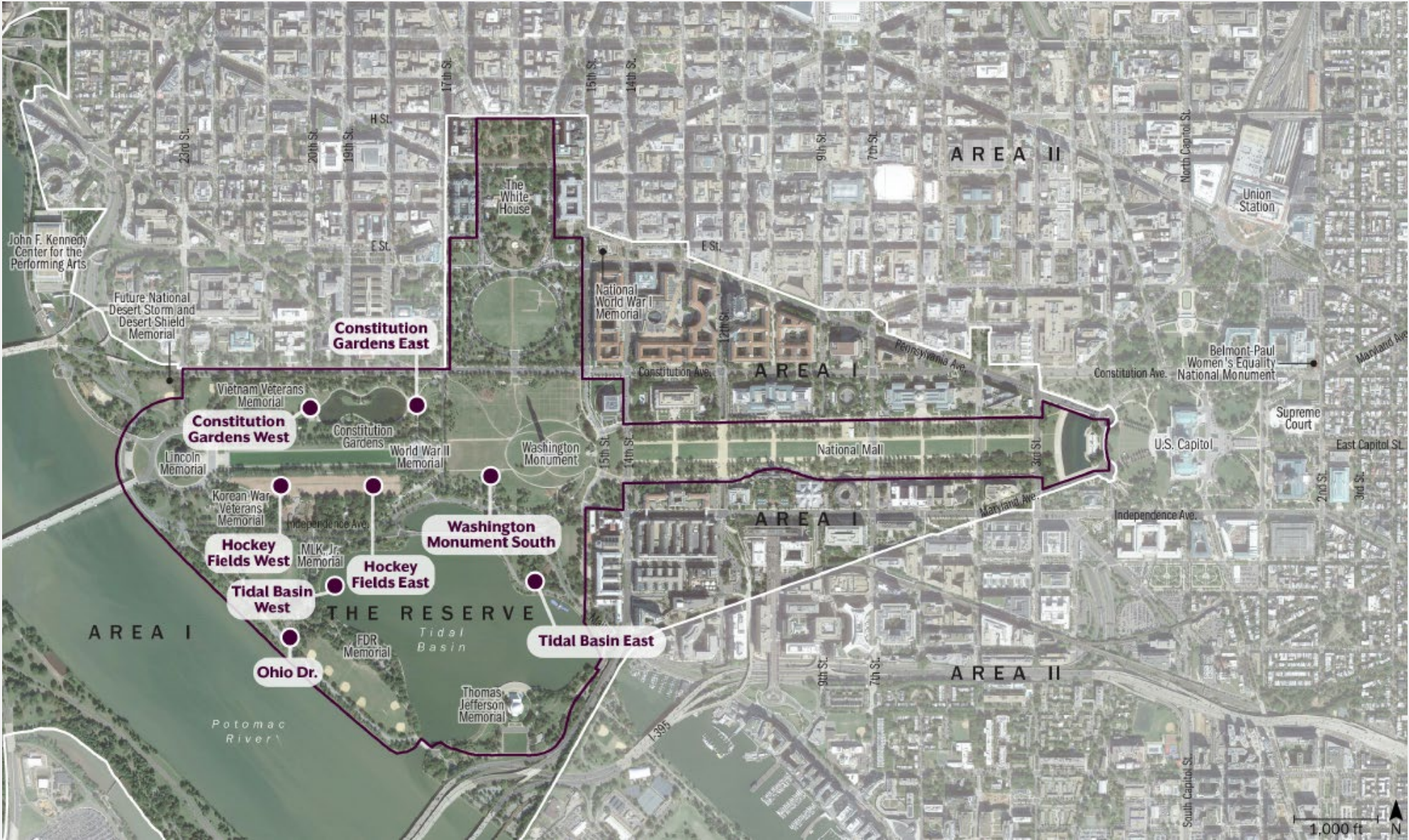
# Initial Range of Potential Sites in the Reserve

SITE	PROGRAM SUITABILITY	THEMATIC NEXUS	SITE ACCESS	ADDITION TO D.C. COMMEMORATIVE LANDSCAPE	INTEGRATION INTO MONUMENTAL CORE	IMPLEMENTATION COORDINATION	NEW INFRASTRUCTURE REQUIREMENTS	SAFETY AND SECURITY	ACCESSIBILITY AND PROXIMITY TO TRANSIT	SUPPORT FACILITIES
Constitution Gardens West	●	●	●	●	●	●	●	●	◐	●
Constitution Gardens East	●	●	●	●	●	◐	●	●	◐	●
Hockey Fields East	●	◐	●	●	●	●	●	●	◐	◐
Washington Monument South	●	◐	●	◐	●	◐	●	●	◐	●
Tidal Basin East	◐	◐	●	◐	●	◐	○	○	◐	◐
Tidal Basin West	◐	◐	●	◐	●	◐	○	◐	○	◐
Ohio Drive	◐	○	●	○	○	●	●	●	○	○
Hockey Fields West	●	◐	●	◐	◐	●	●	●	●	◐
Washington Monument North	◐	◐	●	◐	●	◐	◐	●	◐	●
Ellipse	◐	◐	○	◐	◐	◐	●	●	◐	◐
Rugby Fields	◐	○	●	◐	◐	○	●	◐	●	◐
Lafayette Square	○	◐	◐	◐	◐	◐	●	●	●	◐
14th and Independence	◐	◐	●	◐	○	○	○	○	●	◐
Lincoln West	○	◐	●	◐	○	◐	◐	○	◐	◐

**KEY + SUGGESTED RATINGS** ● Site Would Fully Provide ◐ Site Would Partially Provide ○ Site Would Not Provide



# Top Eight Sites for Consideration





# Top Eight Sites for Consideration

## Hockey Fields West

- Provides clear visibility of Washington Monument;
- Connects to D.C. War Memorial, which commemorates an event that played a significant role in advancing the U.S. women's suffrage movement;
- Offers open and expansive area for program; and
- Presents site challenges due to close proximity to U.S. Park Police Horse Stables and Korean War Veterans Memorial.





# Top Eight Sites for Consideration

## Hockey Fields West



View looking south towards U.S. Park Police Horse Stables



View looking west towards Lincoln Memorial and Korean Veterans War Memorial



View looking east towards Washington Monument



# Top Eight Sites for Consideration

## Ohio Drive

- Extends commemoration south towards the Potomac River;
- Presents challenges in commemorative planning due to constraints posed by the established commemorative tree grove; and
- Lacks clear thematic connections.





# Top Eight Sites for Consideration

## Ohio Drive



View looking northeast from Ohio Drive



View looking south from West Basin Drive



View looking east from the intersection of Ohio Drive and West Basin Drive



# Top Eight Sites for Consideration

## Tidal Basin West

- Introduces women among national leaders including Thomas Jefferson, Franklin Roosevelt, and Martin Luther King, Jr.;
- Places monument adjacent to White House-Thomas Jefferson Memorial View Corridor;
- Provides waterfront setting; and
- Requires large-scale capital improvements outside the scope of memorial sponsor capacity.





# Top Eight Sites for Consideration

## Tidal Basin West



View looking southeast toward the Jefferson Memorial



View looking east from East Basin Drive



View looking north toward the Martin Luther King, Jr. Memorial



# Top Eight Sites for Consideration

## Tidal Basin East

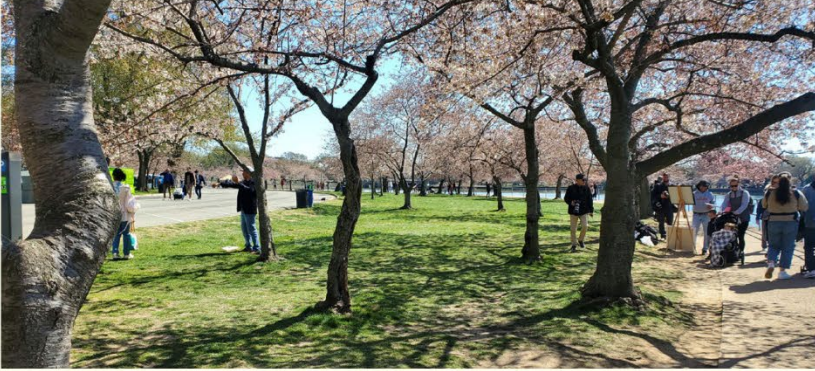
- Introduces women among historic national leaders including Thomas Jefferson, Franklin Roosevelt, and Martin Luther King, Jr.;
- Places monument adjacent to White House--Thomas Jefferson Memorial view corridor;
- Provides waterfront setting; and
- Requires large-scale capital improvements outside the scope of memorial sponsor capacity.





# Top Eight Sites for Consideration

## Tidal Basin East



View looking southeast with the parking lot on the left side



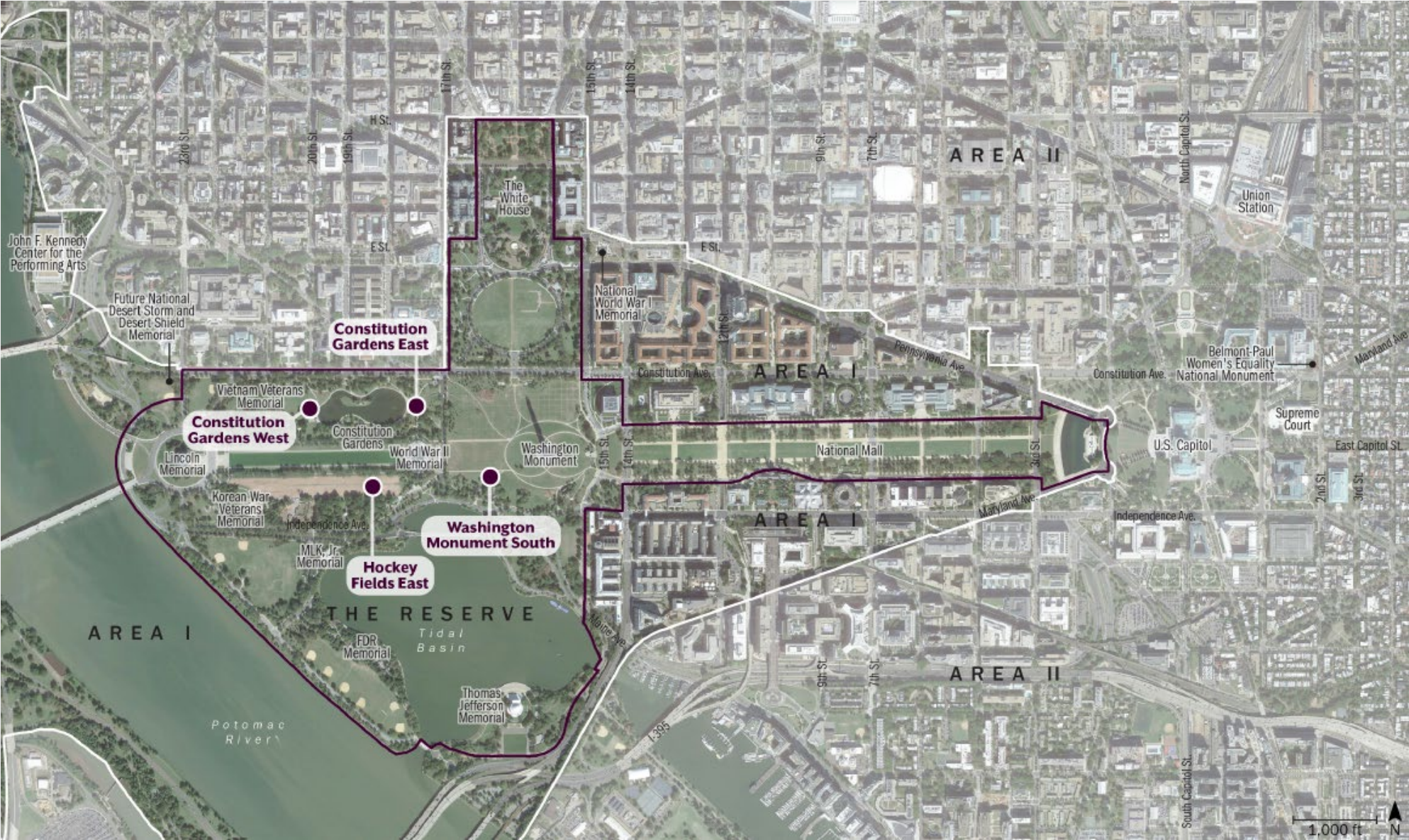
View looking south across the Tidal Basin towards the Jefferson Memorial



View looking southeast towards Ohio Drive/East Basin Drive



# Final Four Sites for Analysis





# Final Four Sites for Analysis

## National Mall Commemorative Landscape

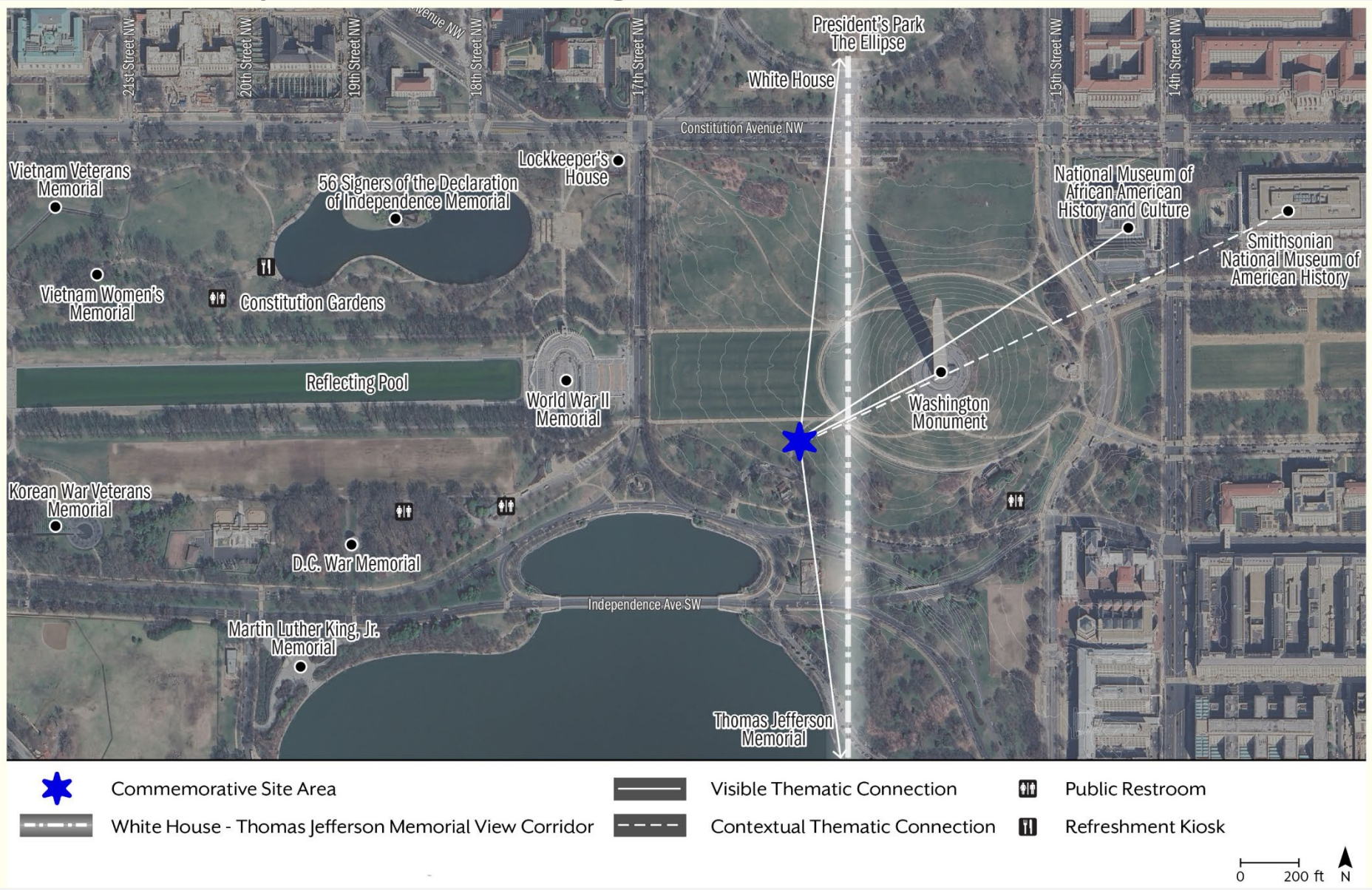




# Final Four Sites for Analysis: Washington Monument South

WASHINGTON MONUMENT SOUTH

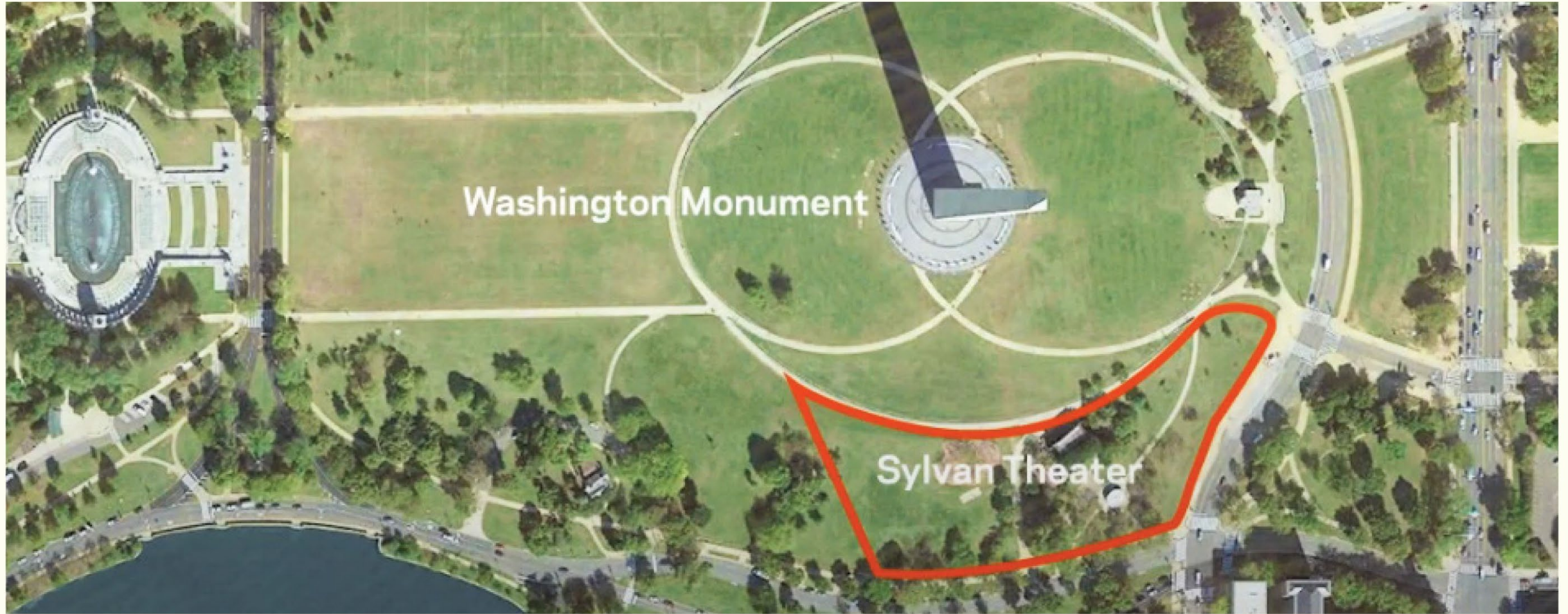
## Context





# Final Four Sites for Analysis: Washington Monument South

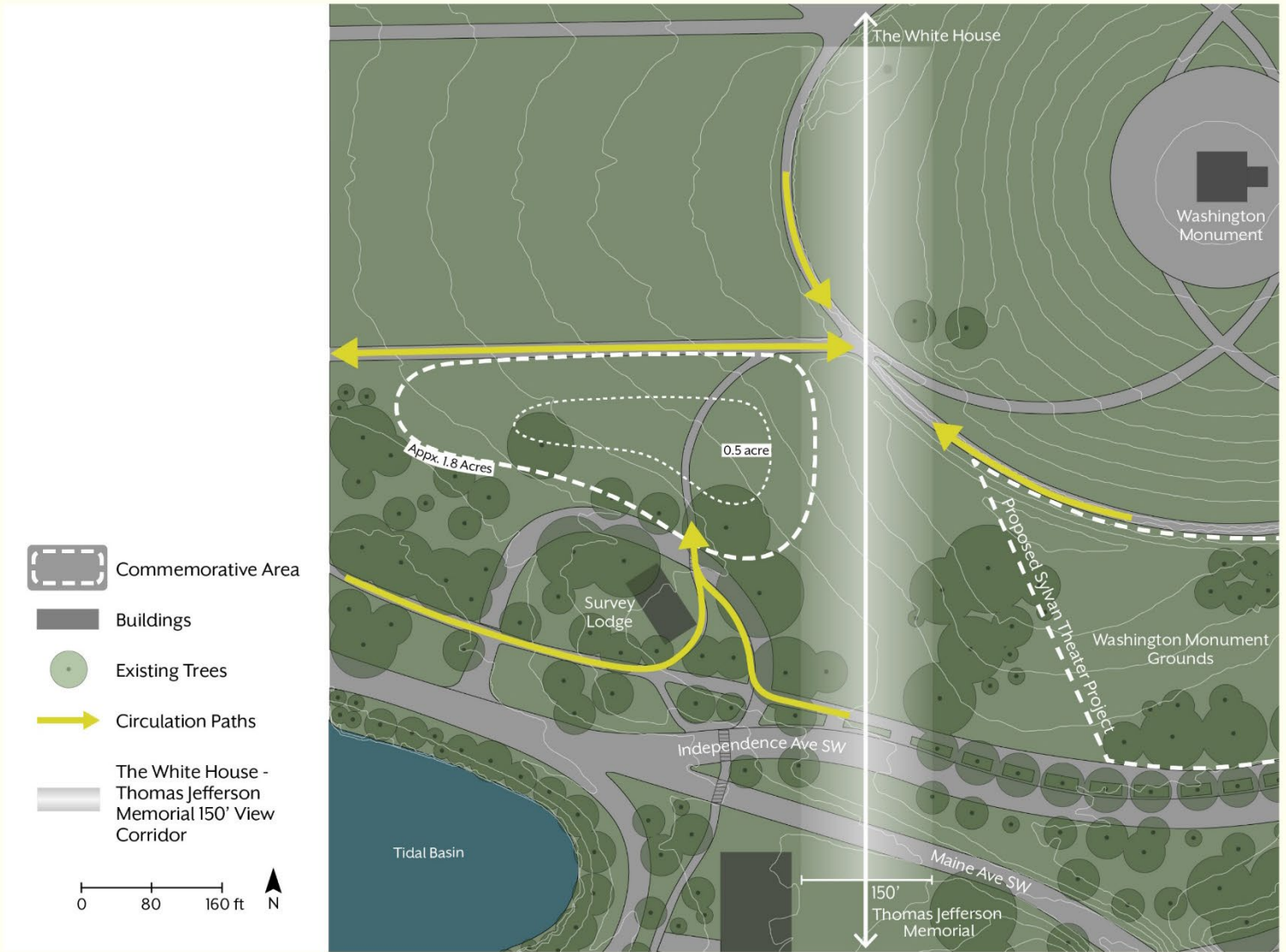
## Proposed Sylvan Theater Improvement Area



# Final Four Sites for Analysis: Washington Monument South

WASHINGTON MONUMENT SOUTH

## Site Analysis

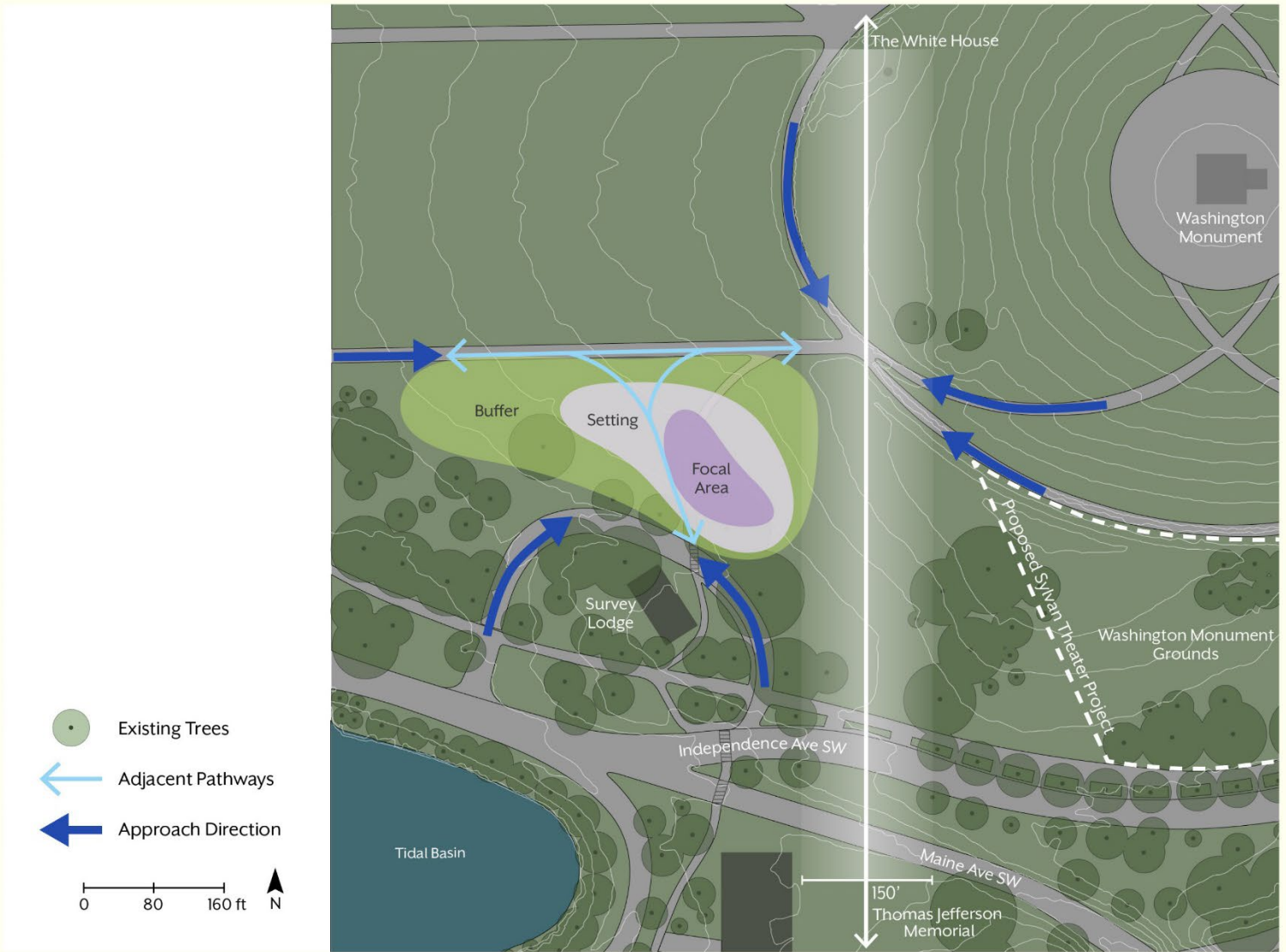




# Final Four Sites for Analysis: Washington Monument South

WASHINGTON MONUMENT SOUTH

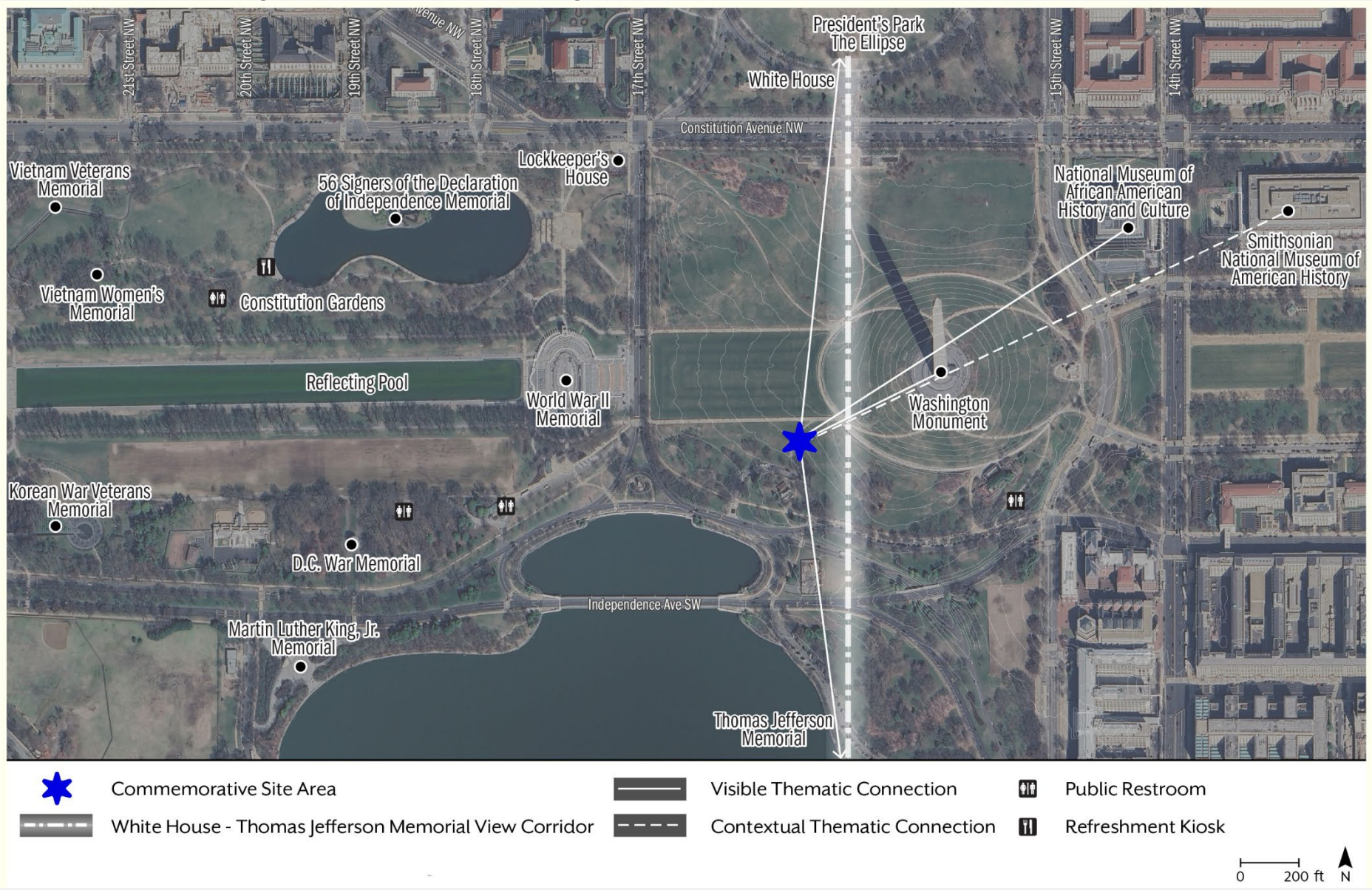
## Potential Design Approach





# Final Four Sites for Analysis: Hockey Fields East

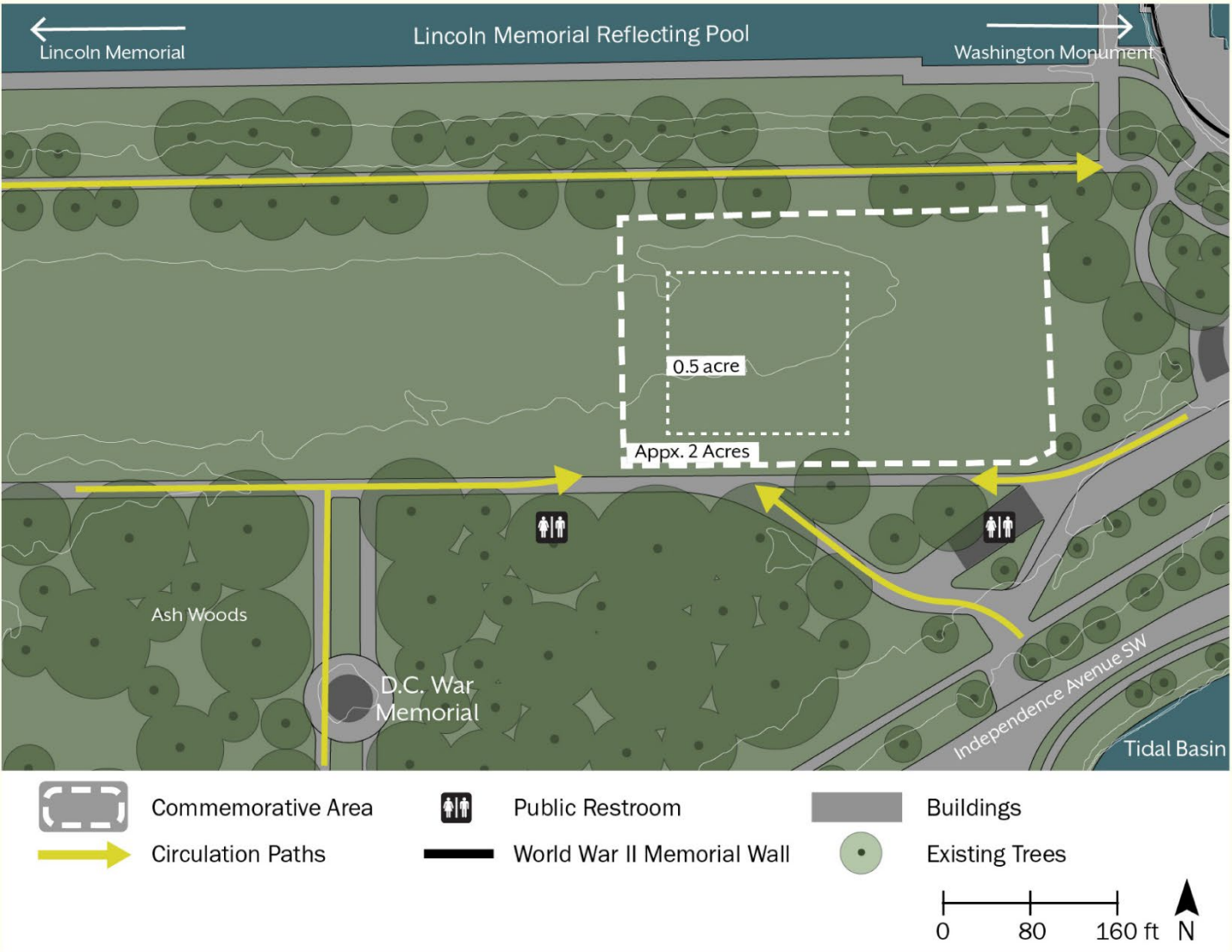
WASHINGTON MONUMENT SOUTH  
Context





# Final Four Sites for Analysis: Hockey Fields East

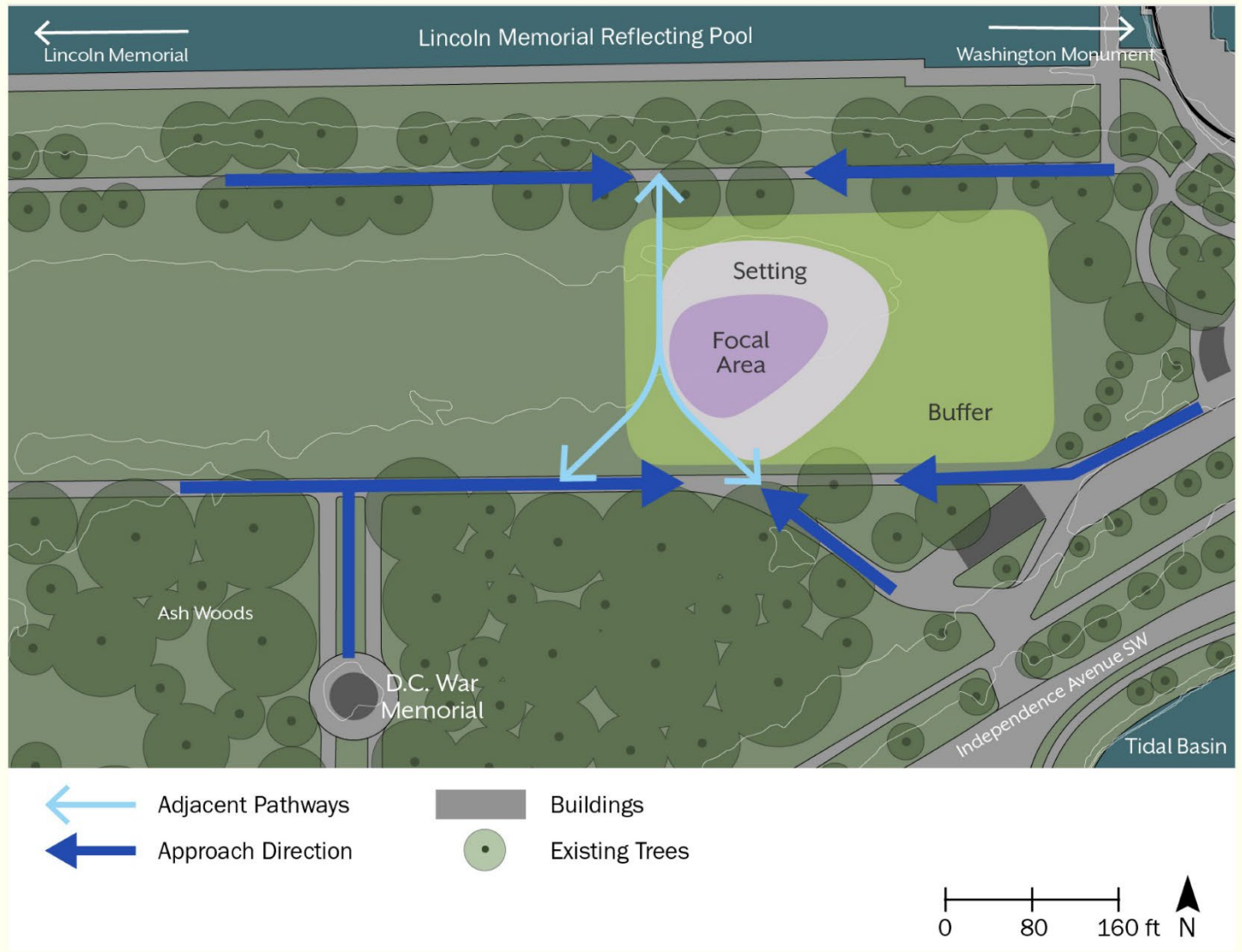
HOCKEY FIELDS EAST  
Site Analysis



# Final Four Sites for Analysis: Hockey Fields East

HOCKEY FIELDS EAST

## Potential Design Approach





# Final Four Sites for Analysis: Constitution Gardens





# Final Four Sites for Analysis: Constitution Gardens

CONSTITUTION GARDENS

## Approved Gardens Lake Project



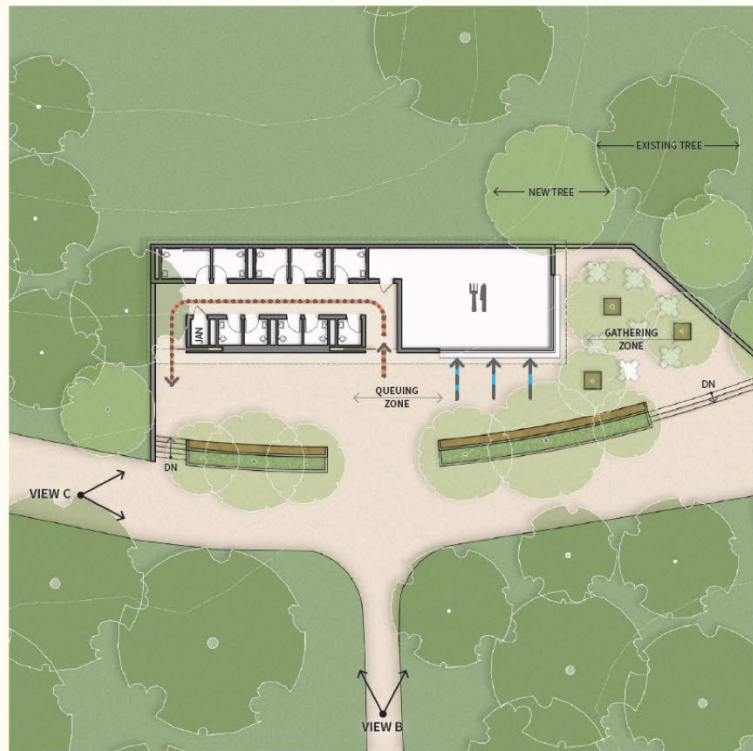
Source: Trust for the National Mall



# Final Four Sites for Analysis: Constitution Gardens

CONSTITUTION GARDENS

## Ongoing Proposals



Proposed Comfort Station - Plan  
Source: NPS



Proposed Comfort Station - Design Rendering  
Source: NPS



Design Rendering of Event Plaza at Constitution  
Gardens East  
Source: Trust for the National Mall



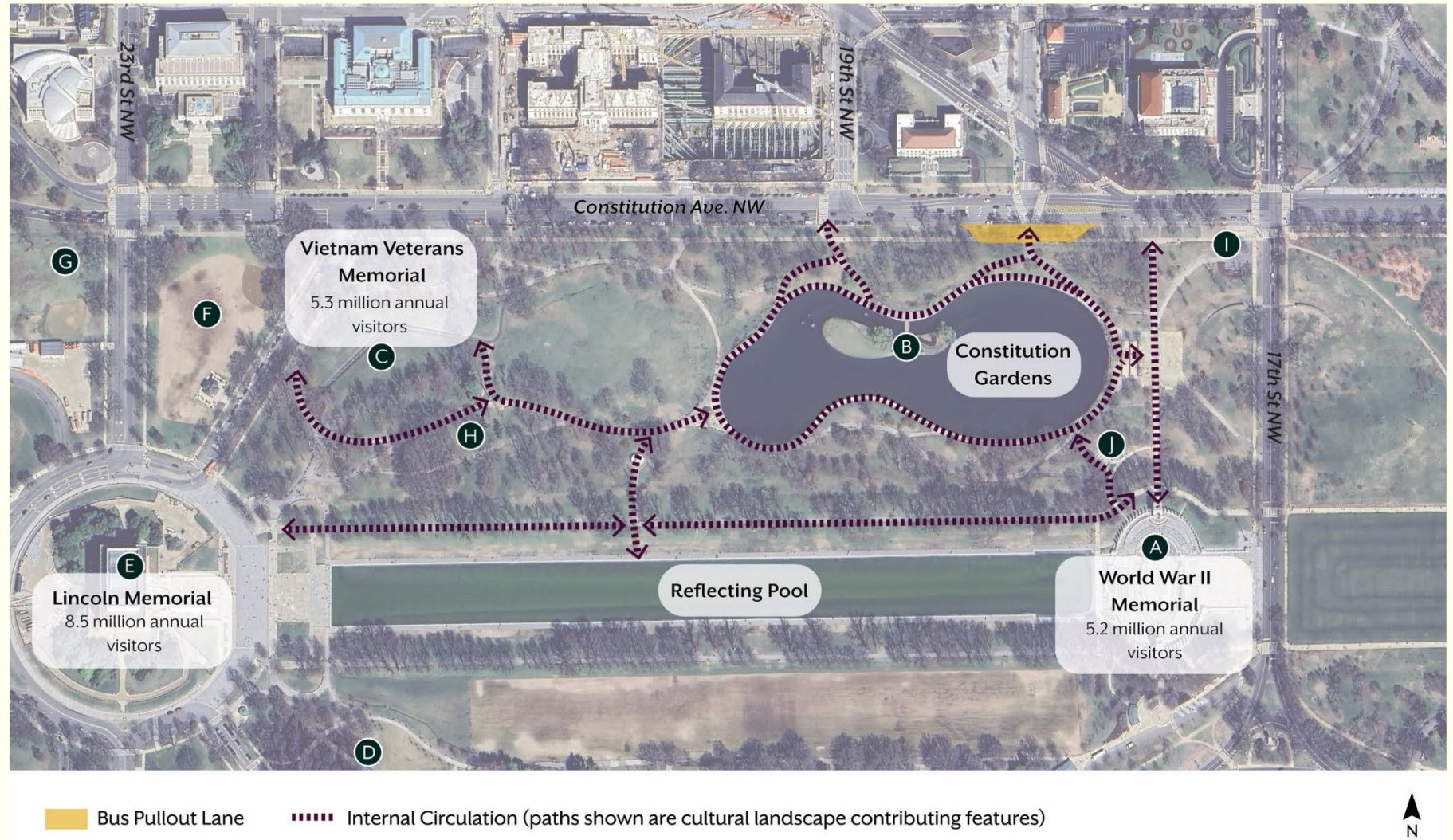
# Final Four Sites for Analysis: Constitution Gardens

## CONSTITUTION GARDENS

### Site Access and Pathway Circulation

Memorials and NPS Historic Building within 0.2 miles of Constitution Gardens:

- A. World War II Memorial
- B. Signers of the Declaration of Independence Memorial
- C. Vietnam Veterans Memorial
- D. Korean War Veterans Memorial
- E. Lincoln Memorial
- F. Global War on Terrorism Memorial (Future)
- G. National Desert Shield and Desert Storm Memorial (Under Construction)
- H. Vietnam Women's Memorial
- I. Lockkeeper's House
- J. FDR D-Day Prayer Circle of Remembrance

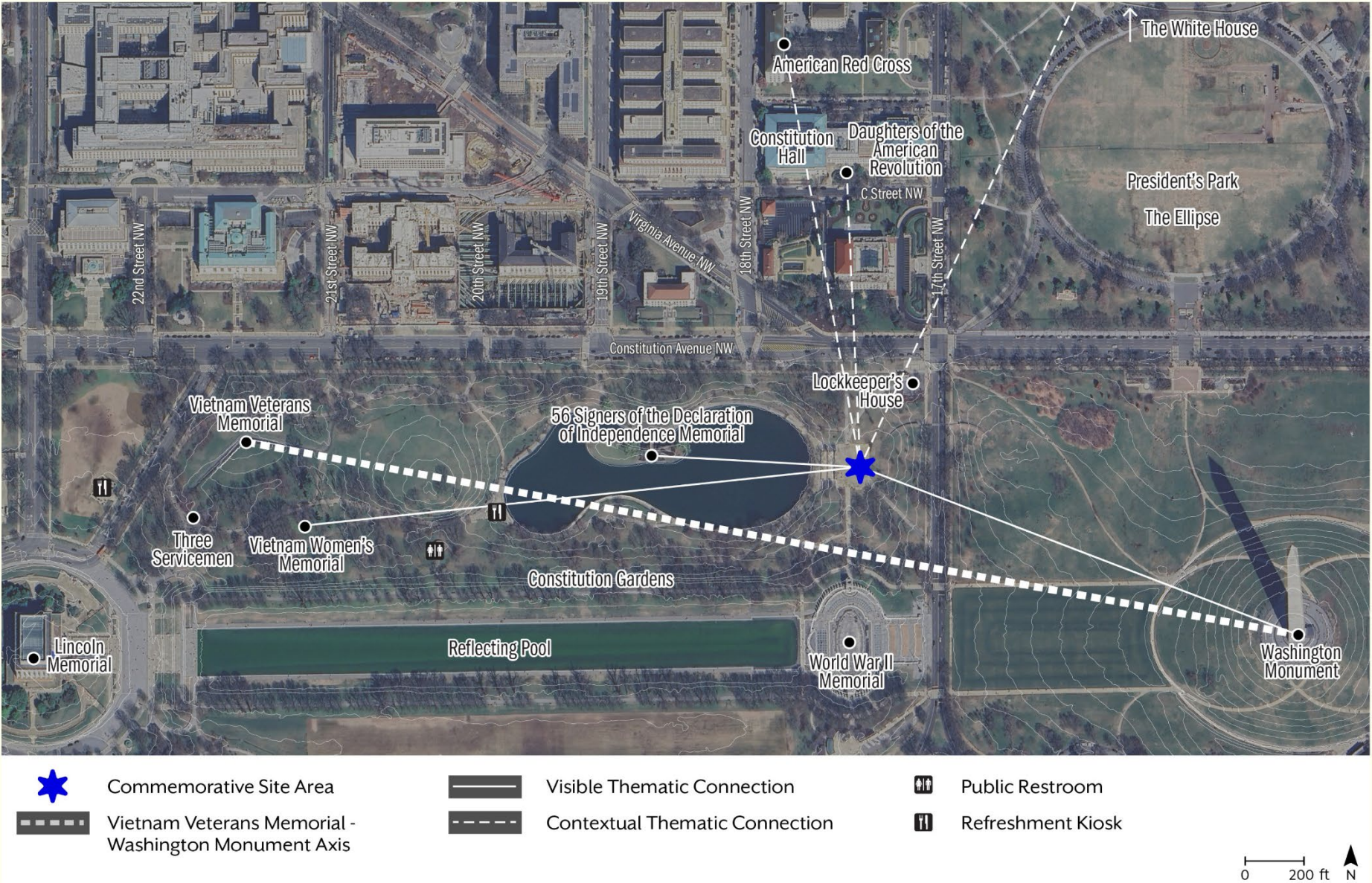




# Final Four Sites for Analysis: Constitution Gardens East

CONSTITUTION GARDENS EAST

## Context

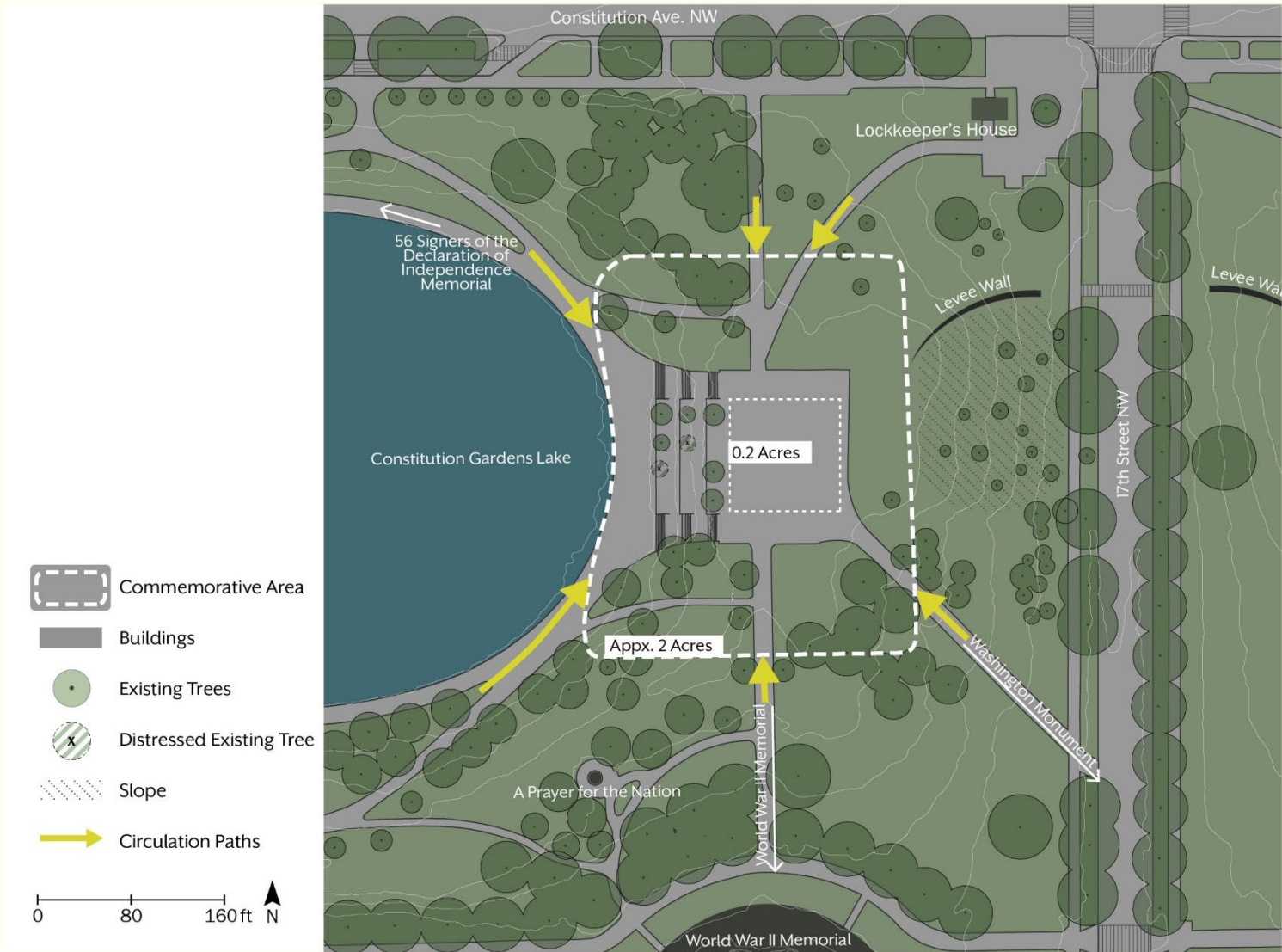




# Final Four Sites for Analysis: Constitution Gardens East

CONSTITUTION GARDENS EAST

## Site Analysis

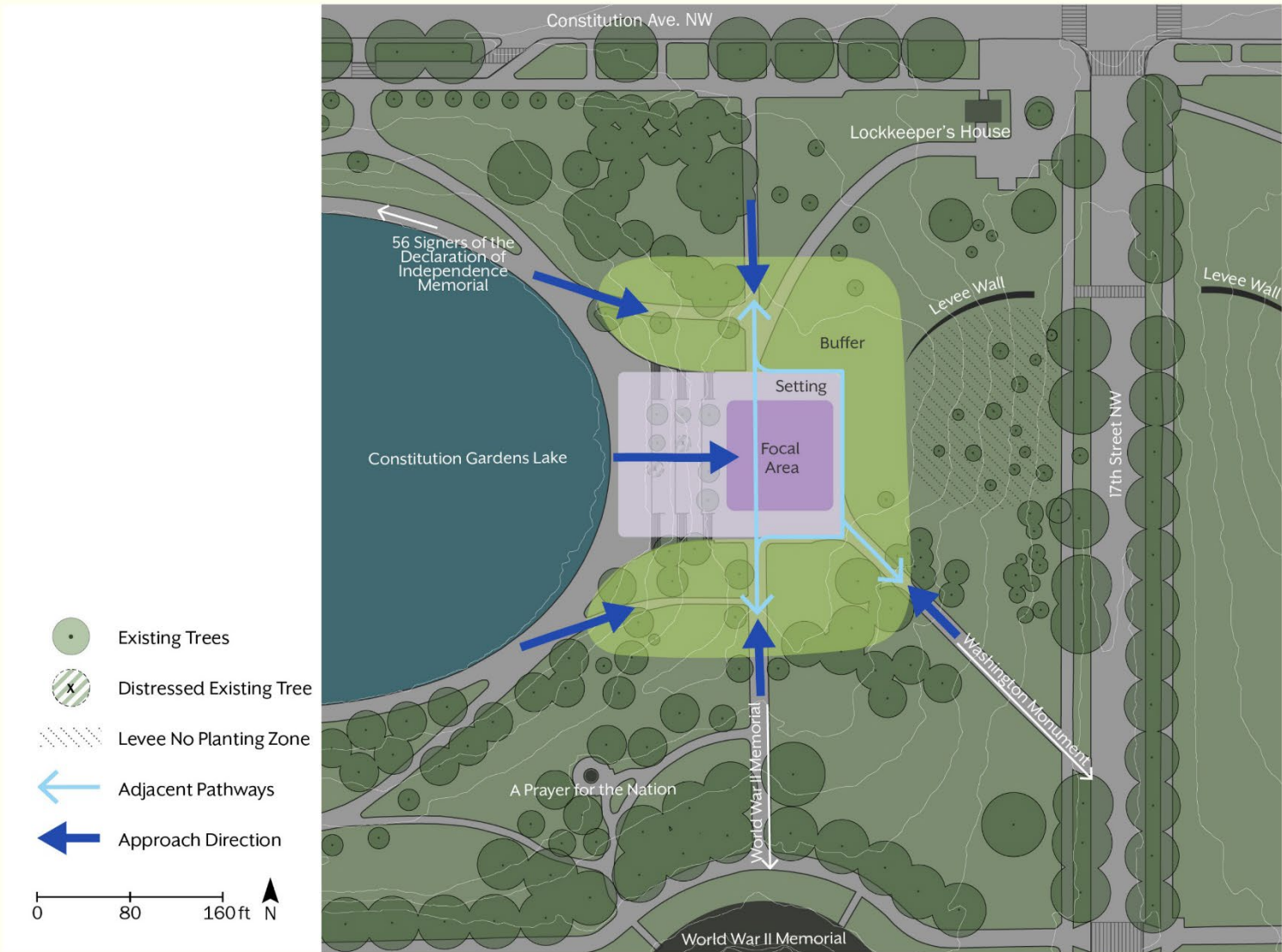




# Final Four Sites for Analysis: Constitution Gardens East

CONSTITUTION GARDENS EAST

## Potential Design Approach





# Final Four Sites for Analysis: Constitution Gardens East

CONSTITUTION GARDENS EAST

## Conceptual Overlay of Potential Design Approach

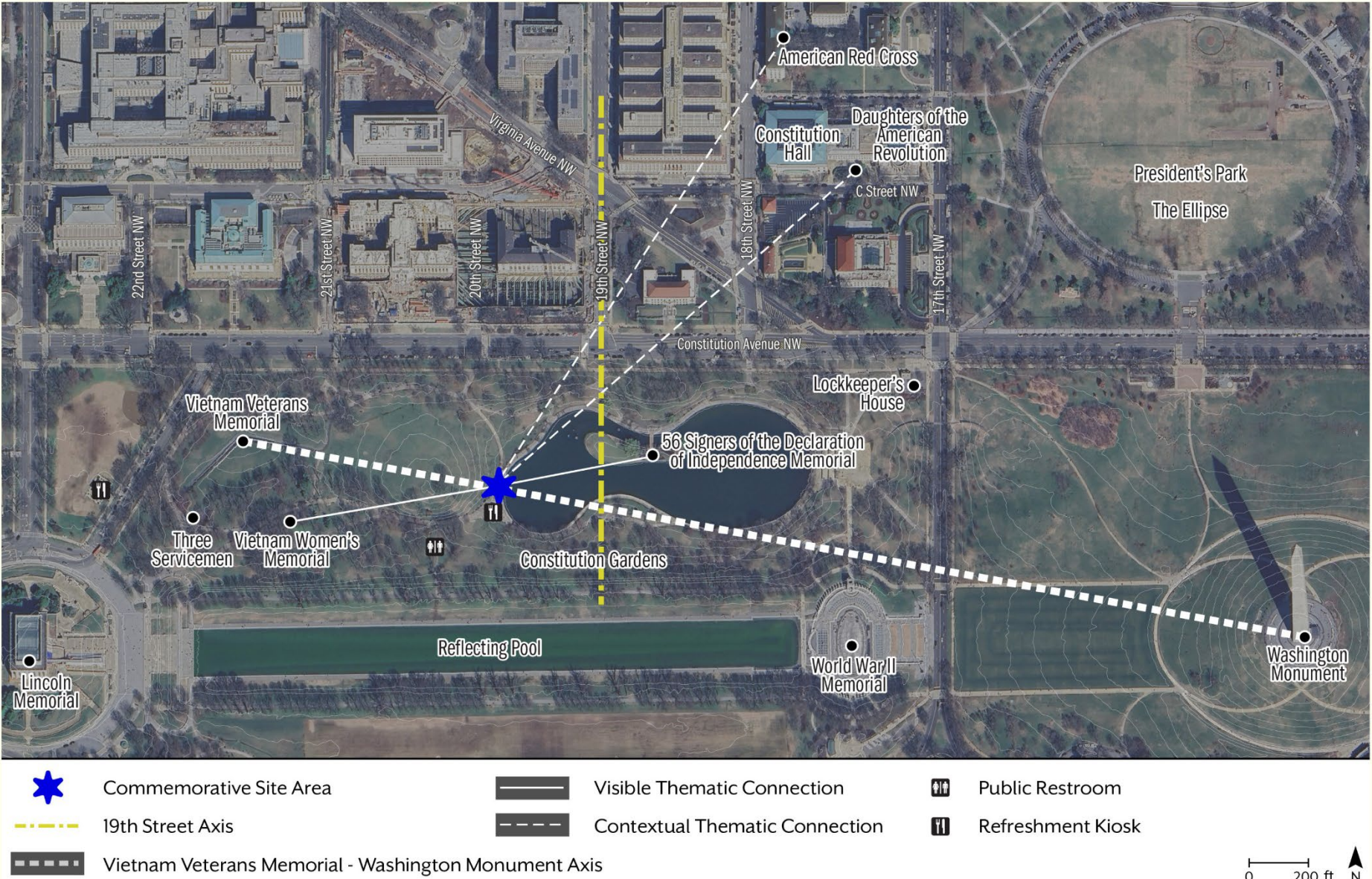




# Final Four Sites for Analysis: Constitution Gardens West

CONSTITUTION GARDENS WEST

## Context





# Final Four Sites for Analysis: Constitution Gardens West

CONSTITUTION GARDENS WEST

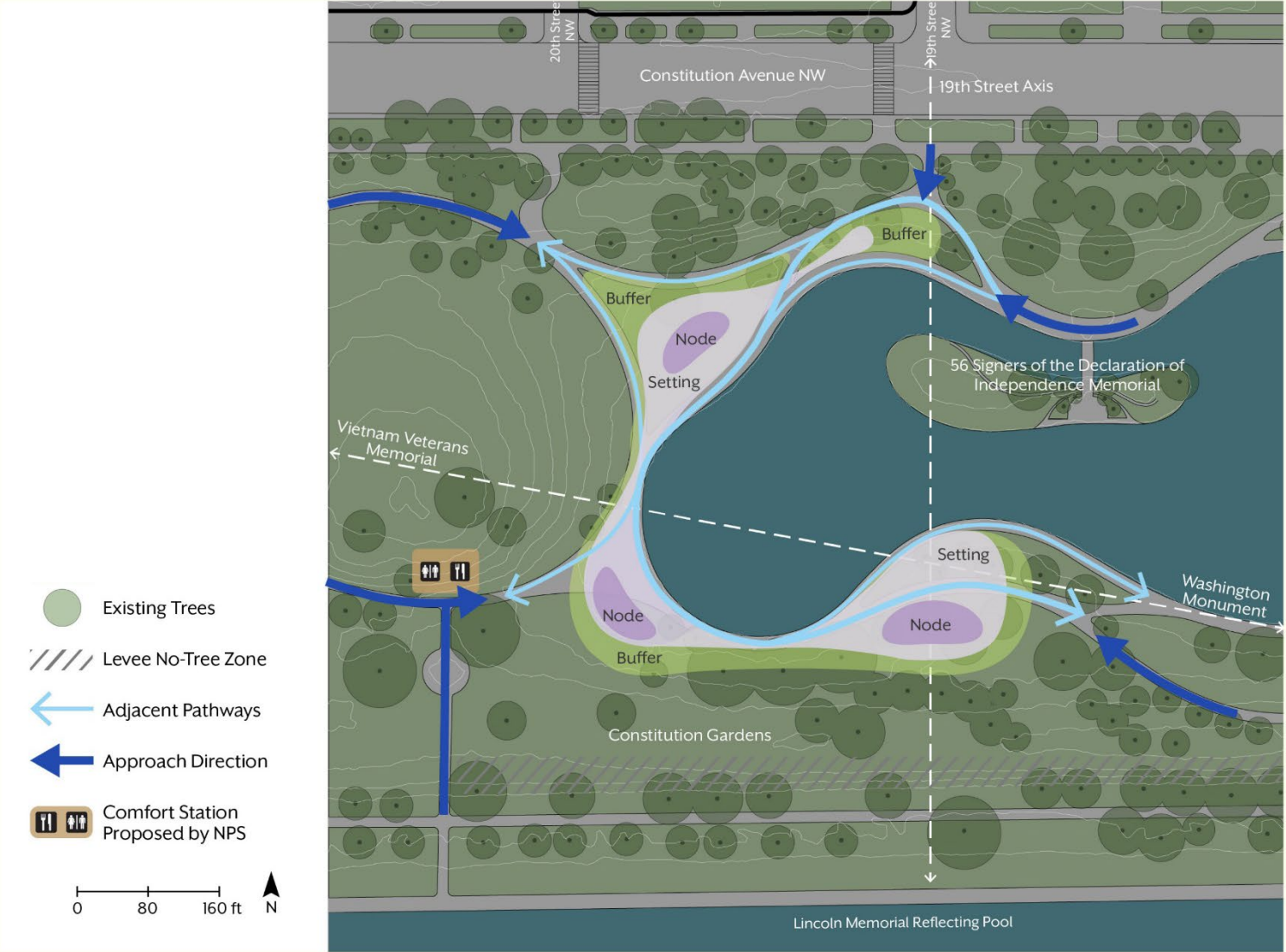
## Site Analysis



# Final Four Sites for Analysis: Constitution Gardens West

CONSTITUTION GARDENS WEST

## Potential Design Approach

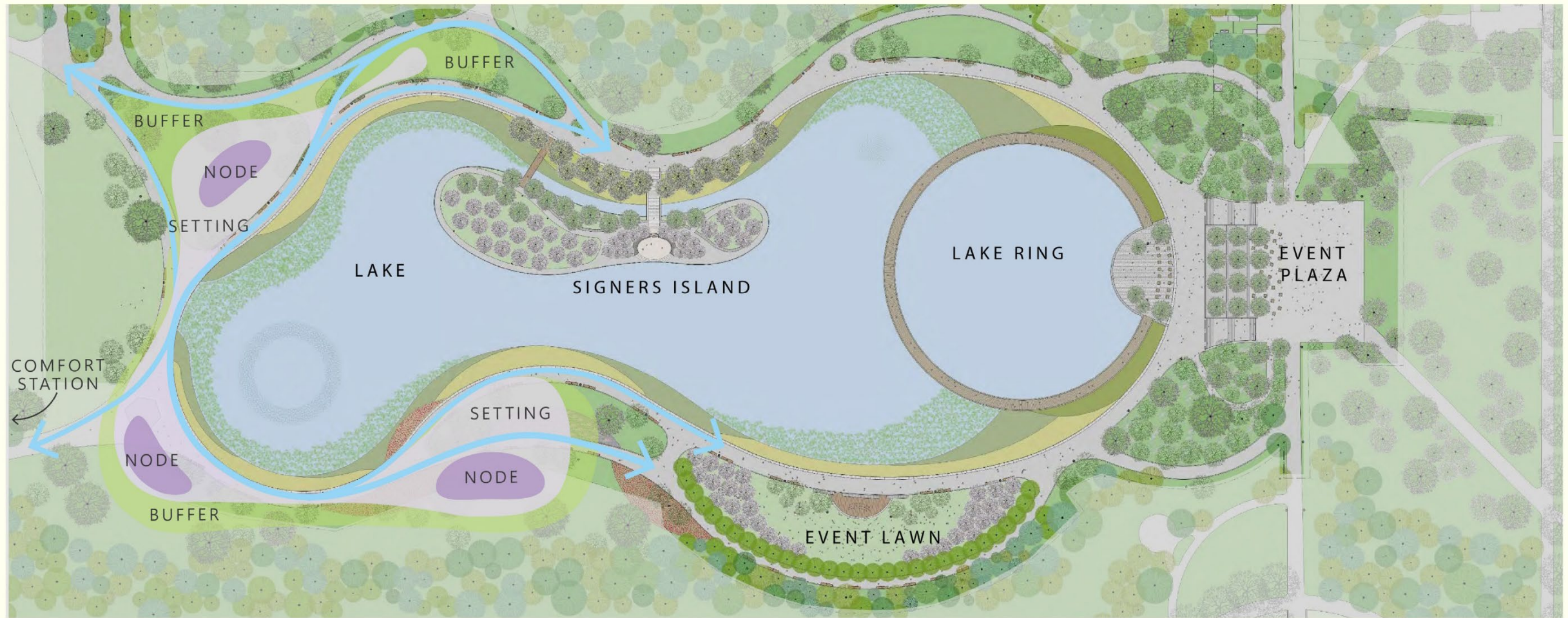




# Final Four Sites for Analysis: Constitution Gardens West

CONSTITUTION GARDENS WEST

## Conceptual Overlay of Potential Design Approach



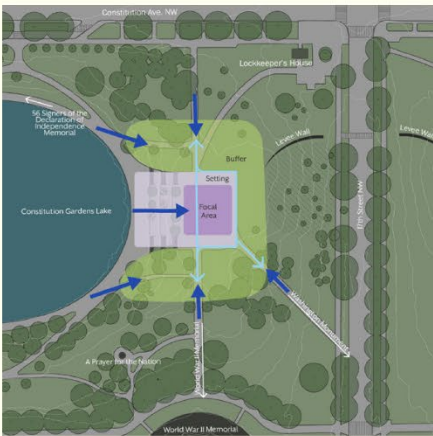


# Final Four Sites for Analysis

## Potential Design Approaches



Constitution  
Gardens West



Constitution  
Gardens East



Hockey Fields East



Washington  
Monument South

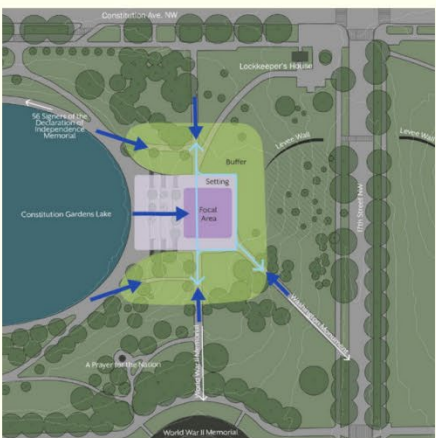


# Final Four Sites for Analysis

## Potential Design Approaches



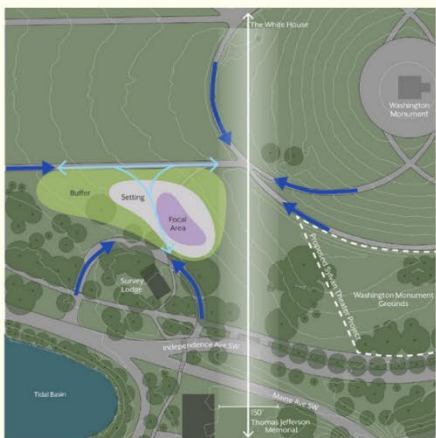
Constitution  
Gardens West



Constitution  
Gardens East



Hockey Fields East



Washington  
Monument South

# Final Four Sites for Analysis

## COMPARATIVE ANALYSIS OF THE FINAL FOUR SITES

SITE	OPPORTUNITIES	CONSTRAINTS
Constitution Gardens West	<ul style="list-style-type: none"><li>• Establishes strong thematic connections to the 56 Signers of the Declaration of Independence Memorial, Vietnam Women’s Memorial, and Washington Monument</li><li>• Provides the opportunity to align with strategic fundraising initiatives by the Trust for the National Mall</li><li>• Reinforces the significance of the 19th Amendment due to proximity to the intersection of 19th Street and Constitution Avenue</li><li>• Provides an open, uninterrupted landscape for memorial planning as a result of the proposed comfort station project by NPS, which includes the relocation and combination of the existing restrooms and kiosk</li></ul>	<ul style="list-style-type: none"><li>• Requires coordination between kiosk relocation, Constitution Gardens rehabilitation, and memorial development timelines</li></ul>
Constitution Gardens East	<ul style="list-style-type: none"><li>• Establishes strong thematic connections to the 56 Signers of the Declaration of Independence Memorial, Vietnam Women’s Memorial, and Washington Monument</li><li>• Features an elevated, central location within an open landscape</li></ul>	<ul style="list-style-type: none"><li>• Overlaps with future location of approved event plaza under the Gardens Lake Project</li><li>• Limits commemorative site development due to intended future use for events and temporary structures</li></ul>
Hockey Fields East	<ul style="list-style-type: none"><li>• Allows flexibility in planning and design through large open space</li><li>• Offers expansive views and thematic connections to the Washington Monument and D.C. War Memorial</li></ul>	<ul style="list-style-type: none"><li>• Impacts existing recreation use, which is an important element of the site</li><li>• Eliminates permit fee income currently generated by the park</li><li>• Disrupts the intended character of the commemorative work due to close proximity to restrooms and transit</li><li>• Creates a perceived separation from the monumental core of the National Mall</li></ul>
Washington Monument South	<ul style="list-style-type: none"><li>• Offers Prominent location with high visibility and access</li><li>• Incorporates women into the landscape honoring the Nation’s founding</li><li>• Provides strong transit connections</li></ul>	<ul style="list-style-type: none"><li>• Limits acceptable treatments due to proposed Sylvan Theater improvements and the 150-ft view corridor between the White House and the Jefferson Memorial, pushing the commemorative site westward toward the Survey Lodge</li><li>• Diminishes the character and essence of the new commemorative work due to the Washington Monument, which features a classically masculine object</li></ul>



# Preferred Site: Constitution Gardens West



## Recommendation

The Women’s Suffrage National Monument Foundation recommends establishing the monument at **Constitution Gardens West**.

As the site of the Women’s Suffrage National Monument, Constitution Gardens West would: 1) weave the monument into commemorative thematic connections that best contextualize the story of women’s contributions to American democracy; 2) best accommodate the desired program; and 3) best integrate the monument into the existing commemorative landscape of the National Mall.

Pictured: 1776 - Retouching an Old Masterpiece, 1915

COMMITTEES:  
COMMERCE, SCIENCE, AND TRANSPORTATION  
FINANCE  
JUDICIARY  
VETERANS' AFFAIRS

## United States Senate

September 17, 2025

Will Scharf  
Chairman  
National Capital Planning Commission  
401 9th Street, #500N  
Washington, DC 20004

Mr. Scharf,

I write to bring to your attention the request for the Constitution Gardens West site to be the permanent location for the Women's Suffrage National Monument.

As the first woman to represent the great state of Tennessee in the United States Senate, I was honored to spearhead the bipartisan and bicameral effort to create a memorial honoring American women's history and the long fight for the right to vote and ratification of the 19th Amendment to the U.S. Constitution on the National Mall last Congress.

I joined with my colleagues in the Senate and the U.S. House of Representatives, the Women's Suffrage National Monument Foundation, and the National Park Service to find a place on the National Mall that would both appropriately honor this critical chapter of American history and add to the beauty and sanctity of the character of the National Mall.

That place is Constitution Gardens, a 50-acre space dedicated during our nation's bicentennial celebrations as a living memorial to the founding of the republic. It is only fitting that the monument to honor our foremothers' role in expanding our democracy through the 19th Amendment and leading up to the 250th anniversary of our nation's founding, be placed there in the same garden that honors our Founding Fathers who signed the Declaration of Independence.

Please give all due consideration to this request. Should you have any questions or need more information, please contact Alexander Gonzalez on my staff at (202) 224-3344.

Sincerely,



Marsha Blackburn  
United States Senator





## Congress of the United States House of Representatives

ASSISTANT DEMOCRATIC LEADER  
MEMBER, STEERING & POLICY  
NATURAL RESOURCES COMMITTEE  
RANKING MEMBER, SUBCOMMITTEE ON  
FEDERAL LANDS  
SUBCOMMITTEE ON WATER, WILDLIFE,  
AND FISHERIES  
JUDICIARY COMMITTEE  
SUBCOMMITTEE ON THE CONSTITUTION  
AND LIMITED GOVERNMENT  
SUBCOMMITTEE ON COURTS,  
INTELLECTUAL PROPERTY, AND THE INTERNET  
COMMITTEE ON RULES

September 29, 2025

National Capital Planning Commission  
401 9th Street, #500N  
Washington, D.C. 20004

Dear Commissioners:

Thank you for your leadership on the National Capital Planning Commission to preserve and enhance the integrity and beauty of the Nation's Capital.

As Ranking Member of the Subcommittee on Federal Lands for the House Committee on Natural Resources, I write to express my strong support for Constitution Gardens West as the permanent site for the Women's Suffrage National Monument. For the past several years, my Congressional colleagues and I have worked closely with the Women's Suffrage National Monument Foundation to appropriately honor this critical chapter of American history - first enacting Public Law 116-217 to establish a monument to celebrate the passage of the 19th Amendment in Washington, D.C., and later enacting Public Law 118-288 to ensure it was located on the National Mall.

The monument enjoys broad bipartisan support from Congress, and I am grateful to my colleagues in Congress, and the numerous others who serve as Ambassadors and leaders of this great monument, for their work to bring this critically important monument to the National Mall.

As this Commission is well aware, national monuments serve as powerful symbols of our shared history reminding us of the struggles, achievements, and values that have shaped our nation. They are not merely static structures, they are living testaments to the many experiences and contributions of our nation's people and they provide a tangible connection to the past and other educational opportunities for present and future generations.

For this reason, I believe that Constitution Gardens West is ideally suited for the Women's Suffrage National Monument due to its thematic connection to the founding principles of American democracy and the ideals enshrined in the Constitution. The site allows for the Women's Suffrage National Monument to join the Signers Memorial in Constitution Gardens, an area of the National Mall that celebrates the United States' commitment to freedom and equality. Locating the Women's Suffrage National Monument here will send a powerful signal to visitors about the fight to expand freedom and equality in our great American democracy. This site also provides appropriate visibility and accessibility to the public, while also ensuring that the design can harmonize with the surrounding landscape and existing memorials.

I am hopeful that this monument will continue to inspire Americans across our nation for generations to come. I will be proud when I can one day soon bring my daughter to this memorial to finally see women's history reflected in the monuments and memorials that are at the core of our Nation's capital.

Thank you for your consideration of this important matter.

Sincerely,

A handwritten signature in blue ink, appearing to read "Joe Neguse", with a stylized, cursive script.

Joe Neguse  
Member of Congress





August 18, 2025

Mr. Marcel Acosta  
Executive Director  
National Capital Planning Commission  
401 9<sup>th</sup> Street NW, North Lobby, Suite 500  
Washington, DC 20004

Dear Mr. Acosta,

I write today on behalf of the Trust for the National Mall to register our support for the Congressionally approved Women's Suffrage National Monument on the National Mall.

As you know, the Trust and the National Park Service have embarked on an ambitious plan to restore Constitution Gardens, inspired by the 250th anniversary of American independence in 2026. Our plans will allow Constitution Gardens to gain its rightful prominence on the National Mall as a vibrant, engaging, healthy urban park that welcomes visitors to gather and learn, and properly honors the founding of our nation.

The Trust is supportive of the efforts of the Women's Suffrage National Monument Foundation to establish the Women's Suffrage National Monument in the western section of Constitution Gardens. We believe the monument will complement our approved restoration design and will serve to further enhance the visitor experience in Constitution Gardens.

We look forward to collaborating with the National Park Service and the Women's Suffrage National Monument Foundation to provide a one-of-a-kind destination on the National Mall.

Sincerely,

A handwritten signature in black ink, appearing to read "Catherine Townsend".

Catherine Townsend  
President and CEO  
Trust for the National Mall

National Capital Planning Commission Meeting  
October 9, 2025

File Number 8699: Women’s Suffrage National Monument Site Selection  
Applicant: United States Department of the Interior, National Park Service

---

Page 42 in the applicant’s [submission materials](#) states that the Women’s Suffrage National Monument Foundation (WSNMF) recommends establishing the monument at a site that the WSNMF identifies as “Constitution Gardens West”. However, this recommendation conflicts with a National Park Service (NPS) plan for the site that the National Capital Planning Commission (NCPC) approved in 2024. The WSNMF recommendation is therefore unsatisfactory.

Further, none of the sites that the WSNMF evaluated are as appropriate for this memorial as is a site that the WSNMF did not evaluate: **Union Square**, in front of the Capitol at the eastern end of the National Mall. A monument commemorating women’s suffrage could not have a better location than one in front of the building in which the nation’s elected legislators meet.

### Constitution Gardens West site

At its March 7, 2024 meeting, the [NCPC approved the final site development plans for the Constitution Gardens Rehabilitation–Phase 2 project \(NCPC File No. 7421\)](#), which the NPS had submitted. Page 12 in the [submission materials](#) for that project contains an “Updated Illustrative Site Plan”. The site plan shows a meadow with trees, two pollinator color gardens, and a wetland planting - biofiltration area near the west end of Constitution Gardens’ lake.

In contrast, page 38 in the submission materials for the Women’s Suffrage National Monument Site illustrates the Constitution Gardens West: “Conceptual overlay of Potential Design Approach”. This illustration shows three potentially paved “nodes” and “settings” that are in the same locations as the meadow with trees, the two pollinator gardens, and the wetland planting - biofiltration area in the “Updated Illustrative Site Plan” for the Constitution Gardens Rehabilitation–Phase 2 project.



Page 36 in the National Monument's submission materials illustrates a "Site Analysis" for the Constitution Gardens West Site. The "Site Analysis" shows that the site is located on an imaginary line that extends southward from 19th Street NW, which begins at Constitution Avenue.

Page 41 in those submission materials contains a "Comparative Analysis of the Final Four Sites". When describing the opportunities that the Constitution Gardens West site offers, the "Comparative Analysis" states: "Reinforces the significance of the 19th Amendment due to proximity to the intersection of 19th Street and Constitution Avenue." The 19th amendment to the Constitution granted women the right to vote.

**This is a trivial reason** to locate the memorial at the Constitution Gardens West site. Few, if any, visitors will recognize that the memorial is on an imaginary line extending southward from 19th Street NW or is anywhere near that street, even if they know that the 19th amendment granted women the right to vote. Other opportunities that the site offers are similar to or exceeded by those that other proposed sites (such as the nearby Constitution Gardens East site) offer.

The "Constraints" column on page 41 states that the Constitution Gardens West Site: "Requires coordination between kiosk relocation, Constitution Gardens rehabilitation, and memorial development timelines." **This is an understatement.** The meadow with trees, the two pollinator color gardens, and the wetland planting - biofiltration area near the west end of Constitution Gardens' lake, which the Constitution Gardens rehabilitation plan features, are completely incompatible with the three potentially paved "nodes" and "settings" that the WSNMF proposes for the Constitution Gardens West site. The memorial could displace much or all of the area's planned meadow, pollinator gardens and wetland plantings.

### Recommendation

**Reject the WSNMF recommendation that the applicant (the National Park Service) should establish the monument at the Constitution Gardens West site.**

### Union Square site

[Union Square](#) is at the eastern end of the National Mall and of the Reserve area that the Commemorative Works Act of 1986 (Public Law 99-652) established. It is bounded on the north by Pennsylvania Avenue NW, on the east by First Street NW and First Street SW, on the south by Maryland Avenue SW, and on the west by Third Street SW and Third Street NW. Its eastern edge is 980 feet from the center of the Capitol's dome.

The eastern portion of Union Square's 11 acres contains a large pool. Its western portion contains a lawn with occasional trees and paths. The Architect of the Capitol has jurisdiction over its property.

The WSNMF can create a monument featuring a fountain or a waterfall within Union Square's pool. It can also create a monument featuring pollinator gardens and/or hardscape on the Square's lawn. The site's proximity to the Capitol and its elected legislators make it an ideal location for a monument commemorating women's suffrage.

Union Square fulfills many of the criteria for site selection that page 6 of the submission materials outline. It is near the National Gallery of Arts' east building and U.S. Botanic Garden, both of which attract visitors and contain public restrooms. The National Gallery has a restaurant that is open to the public.

Union Square is accessible and in proximity to transit. It is only 0.2 miles from the Federal Center Metro Station and 0.6 miles to the Union Station Metro Station. It is therefore within a 20-minute walk to two Metro stations and the many bus routes that serve these stations.

### Recommendation



**The Women's Suffrage National Monument Foundation should work with the Architect of the Capitol to evaluate the suitability of Union Square for its proposed monument.**

Bernard Berne  
Arlington, Virginia

# U.S. COMMISSION OF FINE ARTS

ESTABLISHED BY CONGRESS 17 MAY 1910

401 F STREET NW SUITE 312 WASHINGTON DC 20001-2728 202-504-2200 FAX 202-504-2195 WWW.CFA.GOV

25 September 2025

Dear Ms. Nersesian:

In its public meeting of 18 September conducted by videoconference, the Commission of Fine Arts reviewed a site selection study for the Women's Suffrage National Monument, to be located within the Reserve as defined in the Commemorative Works Act. The Commission approved the memorial sponsor's preferred site, at the western end of Constitution Gardens, and provided the following comments.

Commending the thoughtfulness of the presentation, the Commission members agreed that the site, near the intersection of 19th Street and Constitution Avenue, would provide the strongest thematic connection to the 19th Amendment to the U.S. Constitution. They noted that the expansive multi-nodal diagram presented for this site, featuring a winding route, could appropriately allude to the circuitous path leading to the eventual passage of the 19th Amendment. However, recognizing Constitution Gardens as a park dedicated as a living tribute to the U.S. Constitution, they also noted that this park may be a compelling location to commemorate additional constitutional issues or other important national stories, and they advised reserving enough space for these stories to be told. In their support for Constitution Gardens as the site for the Women's Suffrage National Monument, they discouraged the consideration of the Overlook Terrace at the eastern end of the lake, which they said would best be reserved for temporary and event-based commemoration.

The Commission looks forward to reviewing a concept design for this important new memorial, which will be a significant addition to the commemorative landscape of the nation's capital. As always, the staff is available to assist you.

Sincerely,



Thomas E. Luebke, FAIA  
Secretary

Jen Nersesian, Director  
Region 1 – National Capital Area  
National Park Service  
1100 Ohio Drive, SW  
Washington, DC 20242

cc: Anna Laymon, Women's Suffrage National Monument Foundation  
Claire Sale, AECOM  
Marcel Acosta, National Capital Planning Commission