



## Executive Director's Recommendation

Commission Meeting: July 13, 2017

---

<b>PROJECT</b> <b>US Marine Corps War Memorial Rehabilitation</b> Arlington, Virginia	<b>NCPC FILE NUMBER</b> 7892
<b>SUBMITTED BY</b> United States Department of the Interior National Park Service	<b>NCPC MAP FILE NUMBER</b> 2101.00(73.10)44573
<b>REVIEW AUTHORITY</b> Federal Projects in the Environs per 40 U.S.C. § 8722(b)(1)	<b>APPLICANT'S REQUEST</b> Approval of final site development plans
	<b>PROPOSED ACTION</b> Approve preliminary and final site development plans with comments
	<b>ACTION ITEM TYPE</b> Consent Calendar

---

### PROJECT SUMMARY

The US Marine Corps War Memorial is a national memorial that is located in between Route 50 and Arlington National Cemetery in Arlington, Virginia, and is managed by the National Park Service (NPS) as part of the George Washington Memorial Parkway. The 7.67-acre memorial site was dedicated on November 10, 1954 to honor all members of the US Marine Corps that have died in the defense of the United States since 1775. The site includes a central sculpture and associated grounds, including a parade ground, reviewing stand, memorial plaza, paths, and parking. The central sculpture depicts the raising of the American flag by six US Marines during the Battle of Iwo Jima in World War II. The 32-foot figures are raising a 60-foot bronze flagpole, and sit upon a 10-foot-tall granite plinth. The plinth includes engravings of the names and dates of every major Marine Corps engagement since its founding.

Many components of the memorial have fallen into disrepair, and this project is being implemented to make needed repairs. Improvements include resurfacing of the access road and parking areas; replacement of the existing plaza and site lighting; rehabilitation of deteriorated areas of the plaza, including walkways and site plantings; and replacement of two drinking fountains. Four new bollards would also be added—two at both the east and west staircases. These improvements are intended to increase safety, enhance the visitor experience, protect park resources, improve accessibility, and increase operational efficiency.

New wayfinding and interpretive signage based upon NPS standards would be added to the site, including a new site identification sign, directional signage, and waysides. A total of 10 low-profile waysides would be placed, which would be built to universal accessibility standards and include audio units. Four of the waysides would also include tactile displays for people with visual impairments.

---

In addition to site improvements, the project would include treatment of the sculpture and memorial itself. The sculpture would be washed and waxed, and the engraving on the plinth would be updated to include the US conflicts in Afghanistan and Iraq. The flagpole pulley would be replaced, and the temporary barrier that currently surrounds the memorial base would be replaced with a permanent post and chain barrier. Construction is expected to begin in summer of 2017 and conclude in summer of 2018.

## KEY INFORMATION

- The site was dedicated on November 10, 1954 to honor all members of the US Marine Corps that have died in the defense of the United States since 1775.
- The memorial includes a central sculpture that depicts the American flag being raised by six Marines during the Battle of Iwo Jima in World War II, as well as a parade ground, reviewing stand, memorial plaza, paths, and parking. Much of the memorial components have fallen into disrepair.
- This project will rehabilitate the memorial and grounds, including improvements to increase safety, enhance the visitor experience, protect park resources, improve accessibility, and increase operational efficiency.
- New wayfinding and interpretive signage will be installed. The interpretive signage will include audio units, and some will include tactile displays.
- The sculpture will be washed and waxed, and the engraving on the plinth will be updated to include the US conflicts in Afghanistan and Iraq.

---

## RECOMMENDATION

The Commission:

**Approves** the preliminary and final site development plans for the rehabilitation of the US Marine Corps War Memorial in Arlington, Virginia.

**Commends** the National Park Service for rehabilitating the memorial and grounds in a manner that is sensitive to the historic memorial design and effectively improves facilities to meet the needs and expectations of all visitors.

## PROJECT REVIEW TIMELINE

---

<b>Previous actions</b>	– None
<b>Remaining actions (anticipated)</b>	– None

---

---

## PROJECT ANALYSIS

### Executive Summary

Staff has evaluated the submitted materials and finds that the proposed rehabilitation project will improve resources and facility conditions and expand visitor services at the US Marine Corps War Memorial. Most of the site modifications are replacements in-kind, and other improvements provide much-needed upgrades for visitor access and safety. Therefore, staff recommends that the Commission **approves the preliminary and final site development plans for the rehabilitation of the US Marine Corps War Memorial in Arlington, Virginia.**

### Analysis

In its plans for the US Marine Corps War Memorial, the NPS seeks to increase safety, enhance the visitor experience, protect park resources, improve accessibility, and increase operational efficiency. Submitted plans cover rehabilitation of the memorial plaza, reviewing stand, roadways, parking areas, and pathways. A separate plan describes the placement of new waysides and navigational signage. Landscape improvements are also planned for the site.

Rehabilitation of the memorial plaza and reviewing stands will focus primarily on repairing areas of deterioration. Anticipated work includes full replacement and/or repair of concrete pavement, repointing and repair of granite panels and curb, and installation of a chain barrier system to protect the sculpture and lawn. In addition, all existing bollard lights will be replaced, and four additional bollards—two at both the east and west staircases—will be installed for enhanced security. Lastly in this area, the evergreen shrub hedges around the perimeter of the memorial plaza and reviewing stand will also be replaced.

The roadway and pathways at the memorial will be rehabilitated as part of this project. Many of the paved road areas have significant potholing, and potholes have been filled in other areas to create an uneven road surface. This project would involve full reconstruction of the roadways throughout the site to improve this condition, including the parking area. Pathways throughout the central site would also be reconstructed, with specific improvements to increase accessibility to meet standards, including the improvement and reconstruction of ramps and crossings.

The NPS is also planning to make changes to improve interpretation and wayfinding, including the replacement of four interpretive waysides and the installation of six new waysides (for a total of 10), six wayfinding signs, and a new entry sign. These signs will all be designed to NPS standards, and the waysides will be designed with a low profile (2 feet 6 inches high) specifically for the US Marine Corps War Memorial to minimize visual clutter. The waysides will include universal accessibility features such as audio units, and four of them will also provide tactile models of the sculpture and other site details.

In addition to site improvements, several improvements will be made to the sculpture itself, which is showing signs of wear. The sculpture will be washed and waxed, and the engraved letters on the

---

plinth will be regilded. The engravings will also be updated to include the US conflicts in Afghanistan and Iraq.

Overall, the site plans for the US Marine Corps War Memorial focus on rehabilitation to the historic design intent, improvements are oriented towards enhanced visitor services. Accordingly, staff recommends that the Commission approves the plans, as noted above, and that the Commission **commends the National Park Service for rehabilitating the memorial and grounds in a manner that is sensitive to the historic memorial design and effectively improves facilities to meet the needs and expectations of all visitors.**

## **CONFORMANCE TO EXISTING PLANS, POLICIES AND RELATED GUIDANCE**

### **Comprehensive Plan for the National Capital**

NCPC staff has reviewed this proposal and determined that it is not inconsistent with the policies established in the Federal Elements of the *Comprehensive Plan for the National Capital*. In particular, the project is supported by policies in the Parks and Open Space, Federal Environment, Historic Preservation, and Visitors and Commemoration Elements.

### **National Historic Preservation Act**

This planning effort was originally initiated in 2004, and Section 106 was completed at that time with a determination of No Adverse Effect and concurrence from the Virginia State Historic Preservation Office (VA SHPO) on November 19, 2004. Since then, the scope of the rehabilitation has expanded somewhat, which provided an opportunity to reengage with the VA SHPO and other consulting parties, including NCPC, in 2016. The NPS also determined a finding of No Adverse Effect for the current project, to which the VA SHPO concurred on May 16, 2017, concluding the Section 106 process. NCPC does not have an individual responsibility to comply with the National Historic Preservation Act (NHPA) for this project since its authority in the environs is advisory.

### **National Environmental Policy Act**

An Environmental Assessment (EA) was completed for the project when the rehabilitation effort began in 2004, with a Finding of No Significant Impact (FONSI). Though the work was not completed at that time, most of the current proposal falls within the parameters of that compliance effort, so the EA and FONSI still apply. The only new elements being proposed are the road work, for which the NPS has applied a categorical exclusion. Because its authority in the environs is advisory, NCPC does not have an individual responsibility to comply with the National Environmental Policy Act (NEPA).

## **CONSULTATION**

### **US Commission of Fine Arts**

Though the US Commission of Fine Arts (CFA) does not have a formal review requirement for this project, they have consulted on the rehabilitation effort. CFA staff has participated in scoping site visits, and the Commission formally reviewed the proposed plinth engravings for the US conflicts in Afghanistan and Iraq at its April 20, 2017 meeting with no objection. CFA noted in its recommendation that the new inscriptions would be consistent with the lettering and placement of other additions.

## **ONLINE REFERENCE**

The following supporting documents for this project are available online:

- Project Synopsis
- Submission Letter
- Submission Materials
- NEPA and NHPA Compliance Documents

Prepared by John Gerbich  
06/21/2017

## **POWERPOINT (ATTACHED)**

**NCPC File: #7892**

**U.S. Marine Corps War Memorial  
Rehabilitation**

**George Washington Memorial Parkway  
Arlington, VA**

---

**National Park Service**

**Preliminary and Final Approval of Site Development Plans**

**Commission meeting date:** July 13, 2017

**NCPCC review authority:** 40 U.S.C. 8722(b)(1)

**Applicant request:** Final Approval of Site Development Plans

**Delegated / consent / open / executive session:** Consent Calendar

**NCPCC Review Officer:** J. Gerbich

**NCPCC File number:** 7892

**Project summary:**

The National Park Service has submitted site development plans for rehabilitation of the U.S. Marine Corps War Memorial in Arlington, Virginia, which is managed as part of the George Washington Memorial Parkway. This project was made possible through a gift from philanthropist David M. Rubenstein, and is intended to restore and enhance the iconic Felix de Weldon “Iwo Jima” sculpture and surrounding parkland.

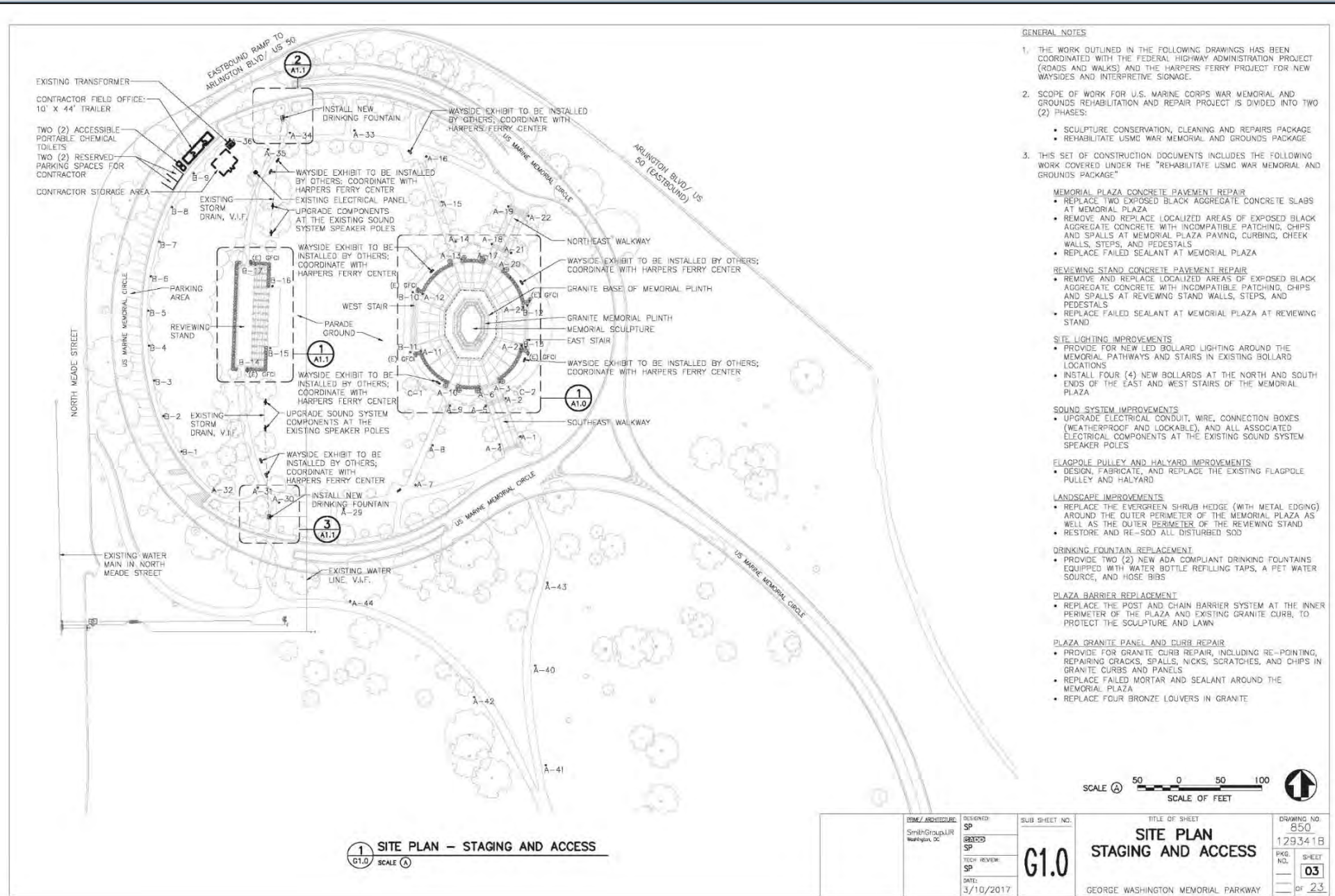
The project would include resurfacing of the access road and parking areas; replacement of the existing plaza and site lighting; rehabilitation of deteriorated areas of the plaza, including walkways and site plantings; and replacement of two drinking fountains. Four new bollards would also be added—two at both the east and west staircases. Accessibility improvements are anticipated throughout the site.

In addition to site work, the project would include treatment of the sculpture and memorial itself. The sculpture would be washed and waxed, and the plinth would be updated to include the conflicts in Afghanistan and Iraq. The flag pole pulley would be replaced, and the temporary barrier that currently surrounds the memorial base would be replaced with a permanent post and chain barrier.

New wayfinding and interpretive signage based upon NPS standards would be added to the site, including a new site identification sign, direction signage, and waysides. A total of 10 low-profile waysides would be added, which would be built to universal accessibility standards and include audio units. Four of the waysides would also include tactile displays for people with visual impairments.

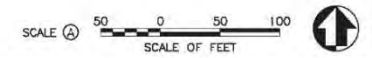




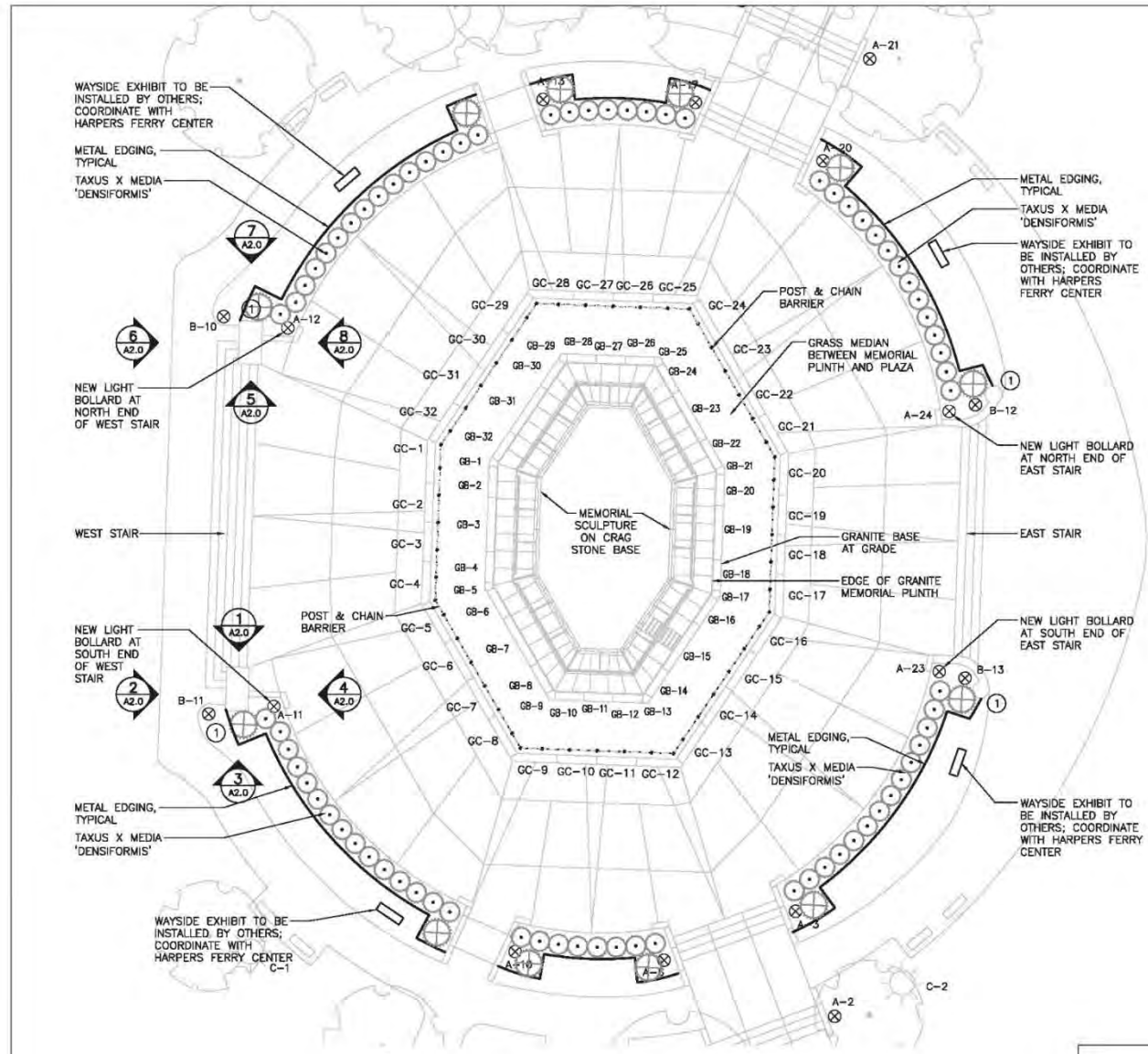


- GENERAL NOTES**
- THE WORK OUTLINED IN THE FOLLOWING DRAWINGS HAS BEEN COORDINATED WITH THE FEDERAL HIGHWAY ADMINISTRATION PROJECT (ROADS AND WALKS) AND THE HARPERS FERRY PROJECT FOR NEW WAYSIDES AND INTERPRETIVE SIGNAGE.
  - SCOPE OF WORK FOR U.S. MARINE CORPS WAR MEMORIAL AND GROUNDS REHABILITATION AND REPAIR PROJECT IS DIVIDED INTO TWO (2) PHASES:
    - SCULPTURE CONSERVATION, CLEANING AND REPAIRS PACKAGE
    - REHABILITATE USMC WAR MEMORIAL AND GROUNDS PACKAGE
  - THIS SET OF CONSTRUCTION DOCUMENTS INCLUDES THE FOLLOWING WORK COVERED UNDER THE "REHABILITATE USMC WAR MEMORIAL AND GROUNDS PACKAGE":
    - MEMORIAL PLAZA CONCRETE PAVEMENT REPAIR**
      - REPLACE TWO EXPOSED BLACK AGGREGATE CONCRETE SLABS AT MEMORIAL PLAZA
      - REMOVE AND REPLACE LOCALIZED AREAS OF EXPOSED BLACK AGGREGATE CONCRETE WITH INCOMPATIBLE PATCHING, CHIPS AND SPALLS AT MEMORIAL PLAZA PAVING, CURBING, CHEEK WALLS, STEPS, AND PEDESTALS
      - REPLACE FAILED SEALANT AT MEMORIAL PLAZA
    - REVIEWING STAND CONCRETE PAVEMENT REPAIR**
      - REMOVE AND REPLACE LOCALIZED AREAS OF EXPOSED BLACK AGGREGATE CONCRETE WITH INCOMPATIBLE PATCHING, CHIPS AND SPALLS AT REVIEWING STAND WALLS, STEPS, AND PEDESTALS
      - REPLACE FAILED SEALANT AT MEMORIAL PLAZA AT REVIEWING STAND
    - SITE LIGHTING IMPROVEMENTS**
      - PROVIDE FOR NEW LED BOLLARD LIGHTING AROUND THE MEMORIAL PATHWAYS AND STAIRS IN EXISTING BOLLARD LOCATIONS
      - INSTALL FOUR (4) NEW BOLLARDS AT THE NORTH AND SOUTH ENDS OF THE EAST AND WEST STAIRS OF THE MEMORIAL PLAZA
    - SOUND SYSTEM IMPROVEMENTS**
      - UPGRADE ELECTRICAL CONDUIT, WIRE, CONNECTION BOXES (WEATHERPROOF AND LOCKABLE), AND ALL ASSOCIATED ELECTRICAL COMPONENTS AT THE EXISTING SOUND SYSTEM SPEAKER POLES
    - FLAGPOLE PULLEY AND HALYARD IMPROVEMENTS**
      - DESIGN, FABRICATE, AND REPLACE THE EXISTING FLAGPOLE PULLEY AND HALYARD
    - LANDSCAPE IMPROVEMENTS**
      - REPLACE THE EVERGREEN SHRUB HEDGE (WITH METAL EDGING) AROUND THE OUTER PERIMETER OF THE MEMORIAL PLAZA AS WELL AS THE OUTER PERIMETER OF THE REVIEWING STAND
      - RESTORE AND RE-SOD ALL DISTURBED SOD
    - DRINKING FOUNTAIN REPLACEMENT**
      - PROVIDE TWO (2) NEW ADA COMPLIANT DRINKING FOUNTAINS EQUIPPED WITH WATER BOTTLE REFILLING TAPS, A PET WATER SOURCE, AND HOSE BIBS
    - PLAZA BARRIER REPLACEMENT**
      - REPLACE THE POST AND CHAIN BARRIER SYSTEM AT THE INNER PERIMETER OF THE PLAZA AND EXISTING GRANITE CURB, TO PROTECT THE SCULPTURE AND LAWN
    - PLAZA GRANITE PANEL AND CURB REPAIR**
      - PROVIDE FOR GRANITE CURB REPAIR, INCLUDING RE-POINTING, REPAIRING CRACKS, SPALLS, NICKS, SCRATCHES, AND CHIPS IN GRANITE CURBS AND PANELS
      - REPLACE FAILED MORTAR AND SEALANT AROUND THE MEMORIAL PLAZA
      - REPLACE FOUR BRONZE LOUVERS IN GRANITE

**1 SITE PLAN - STAGING AND ACCESS**  
G1.0 SCALE (A)



DESIGNED / ARCHITECTURE SP SmithGroupJJR Washington, DC	DESIGNED SP	SUB SHEET NO.  <b>G1.0</b>	TITLE OF SHEET <b>SITE PLAN                  STAGING AND ACCESS</b>	DRAWING NO. 850 129.341B
	GRADED SP			PKG. NO. 03
	TECH REVIEW SP			SHEET of 23
	DATE: 3/10/2017			GEORGE WASHINGTON MEMORIAL PARKWAY



**GENERAL NOTES**

THE WORK OUTLINED IN THE FOLLOWING DRAWINGS HAS BEEN COORDINATED WITH THE FEDERAL HIGHWAY ADMINISTRATION PROJECT (ROADS AND WALKS) AND THE HARPERS FERRY PROJECT FOR NEW WAYSIDES AND INTERPRETIVE SIGNAGE.

SCOPE OF WORK FOR U.S. MARINE CORPS WAR MEMORIAL AND GROUNDS REHABILITATION AND REPAIR PROJECT IS DIVIDED INTO TWO (2) PHASES:

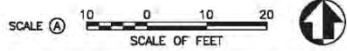
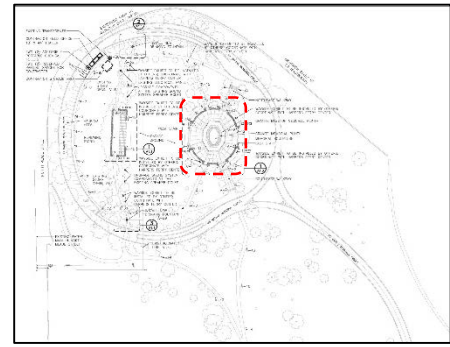
- SCULPTURE CONSERVATION, CLEANING AND REPAIRS PACKAGE
- REHABILITATE USMC WAR MEMORIAL AND GROUNDS PACKAGE

THIS SET OF CONSTRUCTION DOCUMENTS INCLUDES THE FOLLOWING WORK COVERED UNDER THE "REHABILITATE USMC WAR MEMORIAL AND GROUNDS PACKAGE"

- 1 EXISTING ELECTRICAL OUTLET TO REMAIN.
- 2 INSTALL NEW ELECTRICAL OUTLET, SEE ELECTRICAL PLANS AND SPECIFICATIONS

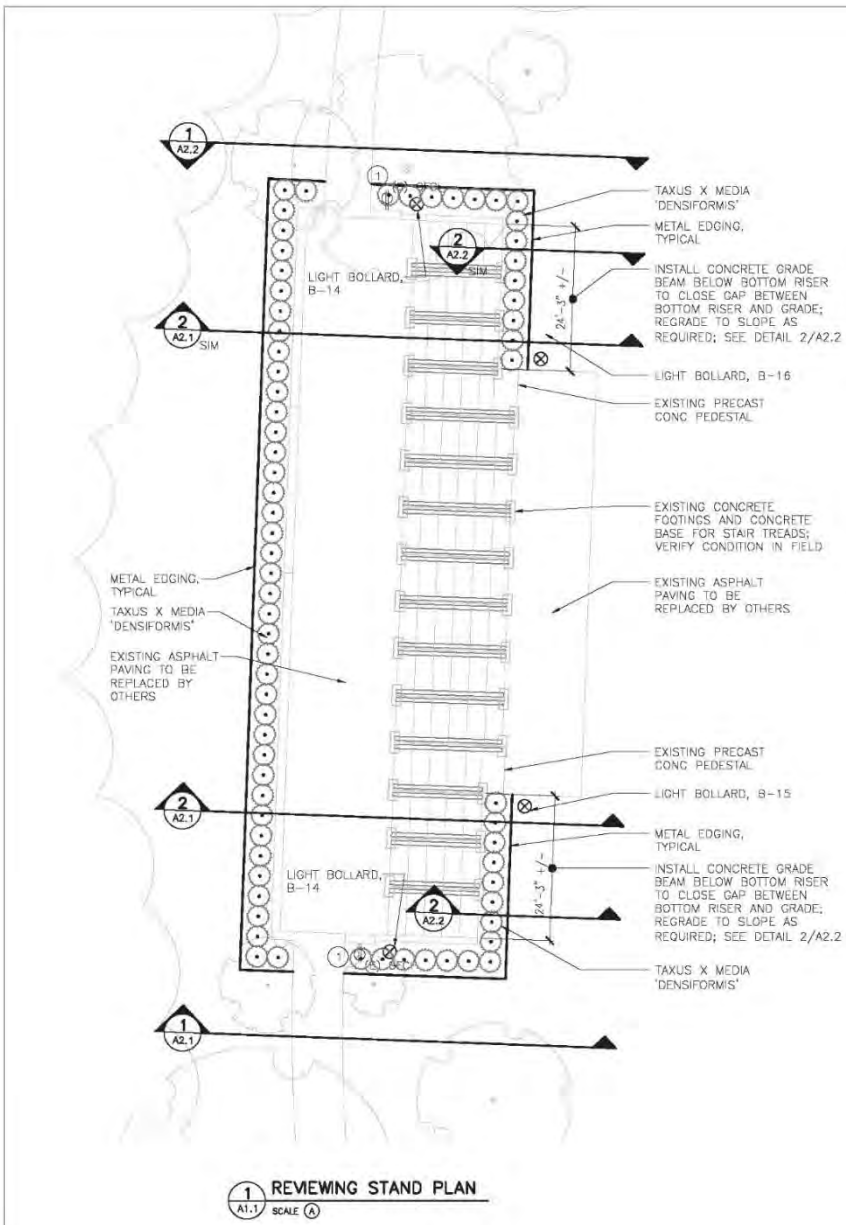
**LEGEND**

- POST & CHAIN BARRIER
- SHRUB (SEE PLANT LIST)
- METAL EDGING
- ⊗<sub>A-XX</sub> LIGHT BOLLARD, 24"
- ⊗<sub>B-XX</sub> LIGHT BOLLARD, 36"

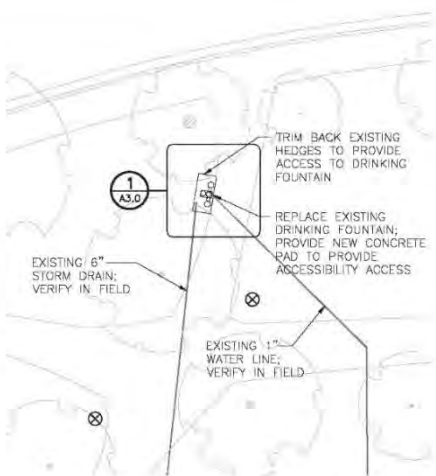


**1 MEMORIAL PLAZA PLAN**  
A1.0 SCALE A

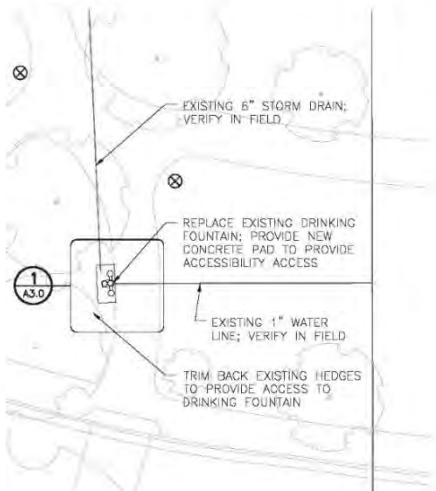
DATE / REVISIONS SmithGroupJJR Washington, DC	DESIGNED: SP	SUB SHEET NO.  <b>A1.0</b>	TITLE OF SHEET <b>MEMORIAL PLAZA PLAN</b>	DRAWING NO. 850
	GRADED SP		PKG. NO. SHEET 05 OF 23	
	TECH REVIEW: SP			129341B
	DATE: 3/10/2017			GEORGE WASHINGTON MEMORIAL PARKWAY



**1 REVIEWING STAND PLAN**  
A1.1 SCALE (A)



**2 NORTH DRINKING FOUNTAIN PLAN**  
A1.1 SCALE (A)



**3 SOUTH DRINKING FOUNTAIN PLAN**  
A1.1 SCALE (A)

**GENERAL NOTES**

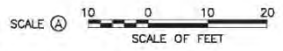
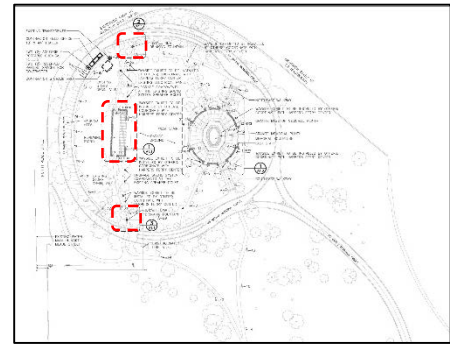
1. THE WORK OUTLINED IN THE FOLLOWING DRAWINGS HAS BEEN COORDINATED WITH THE FEDERAL HIGHWAY ADMINISTRATION PROJECT (ROADS AND WALKS) AND THE HARPERS FERRY PROJECT FOR NEW WAYSIDES AND INTERPRETIVE SIGNAGE.
2. SCOPE OF WORK FOR U.S. MARINE CORPS WAR MEMORIAL AND GROUNDS REHABILITATION AND REPAIR PROJECT IS DIVIDED INTO TWO (2) PHASES:
  - SCULPTURE CONSERVATION, CLEANING AND REPAIRS PACKAGE
  - REHABILITATE USMC WAR MEMORIAL AND GROUNDS PACKAGE
3. THIS SET OF CONSTRUCTION DOCUMENTS INCLUDES THE FOLLOWING WORK COVERED UNDER THE "REHABILITATE USMC WAR MEMORIAL AND GROUNDS PACKAGE"

**KEYNOTES**

- 1 EXISTING ELECTRICAL OUTLET TO REMAIN.
- 2 INSTALL NEW ELECTRICAL OUTLET, SEE ELECTRICAL PLANS AND SPECIFICATIONS

**LEGEND**

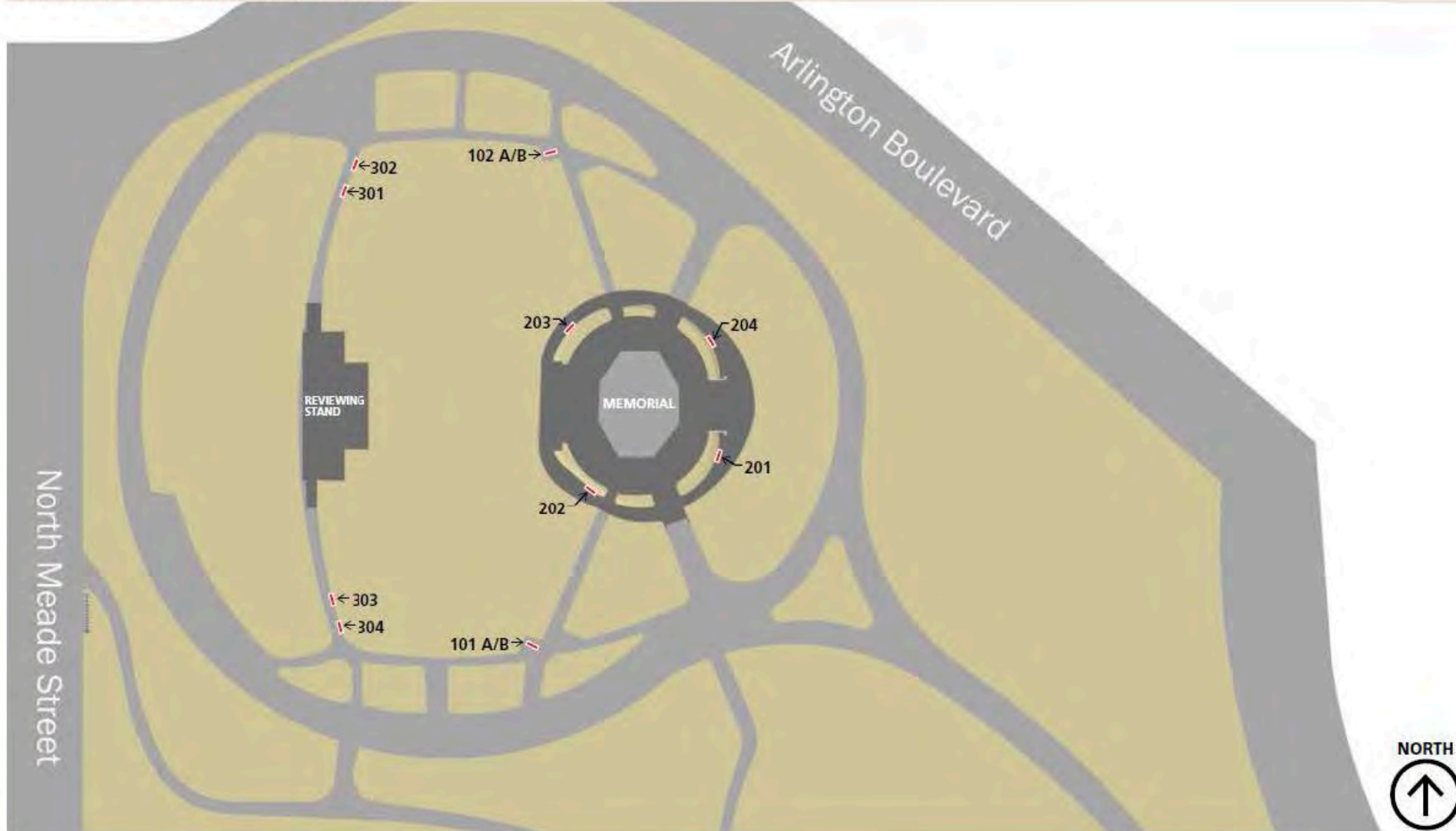
- POST & CHAIN BARRIER
- SHRUB (SEE PLANT LIST)
- METAL EDGING
- LIGHT BOLLARD, 24"
- LIGHT BOLLARD, 36"



FIRM/ARCHITECTURE SmithGroupJJR Washington, DC	DESIGNED: SP	SLIP SHEET NO.	TITLE OF SHEET	DRAWING NO.
	APPROVED: SP	<b>A1.1</b>	<b>REVIEWING STAND PLAN</b>	850
	FIELD REVIEW: SP			129341B
	DATE: 3/10/2017			PKG. NO. SHEET
			GEORGE WASHINGTON MEMORIAL PARKWAY	OF 23



USMC WAR MEMORIAL WAYSIDE EXHIBIT SITE PLAN



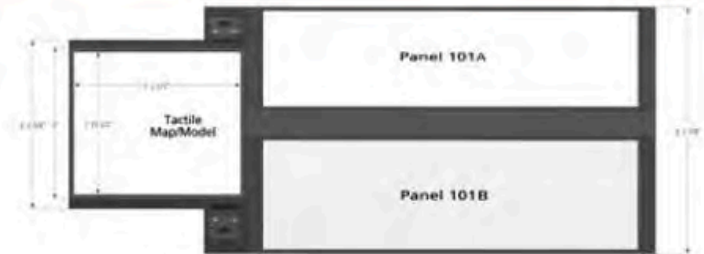
## WAYSIDE EXHIBIT BASES

### Universal Design: Tailored for this Site

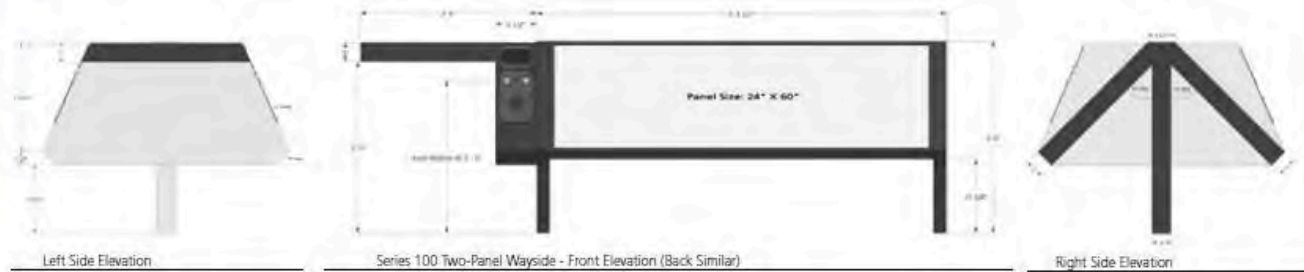
No other site in the National Park System features long, low waysides like these. Arriving visitors can quickly orient themselves to the memorial grounds with a waist-high tactile site map that can be understood by using their eyes, or using their fingers, or both. A brief, dramatic arrival message sets the tone of the experience to come, like a billboard. An exit challenge gives them something to think about as they walk away. The two messages are conjoined to avoid adding yet more alien elements to the view.



Activating the audio unit, while a user in a wheelchair touches model



Series 100 Two-Panel Wayside - Plan View



Left Side Elevation

Series 100 Two-Panel Wayside - Front Elevation (Back Similar)

Right Side Elevation

### Tactile elements in this wayside package include:

- Orientation map (x2)
- Face from sculpture
- Statue

### Materials: Bronze

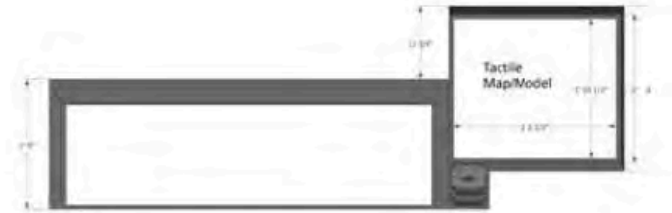
**Mounting:** Screw-mounted (hidden screw mount fasteners under the table)

**Structure:** Painted aluminum (NPS Dark Brown Spatter Coat finish)

## WAYSIDE EXHIBIT BASES

### Tactile Mockups

Testing included mocking up the proposed tactile elements, including the sculpted face (top) at actual size to convey scale, and the model of the entire sculpture (bottom). Tactile elements are only proposed for the entry/exit points and the reviewing stand walk area but not the inner ring around the statue.



Series 200, 300, 400 Single Panel Wayside with Tactile Table - Plan View



Left Side Elevation



Series 200, 300, 400 Single Panel Wayside with Tactile Table - Front Elevation



Right Side Elevation

PANEL DESIGN



HONOR · COURAGE · COMMITMENT

Core values every Marine recruit makes a part of their lives

Keep It Quiet

A war memorial is no place for loud horseplay, ball games, frisbees, or rowdiness. Here, we ask that you show respect for the memories of Marines... and for their families.

Here We Remember Them All

Look at any chapter of our history since the American Revolution, and there you can find the Marines — under arms, ready to go, and willing to sacrifice for the sake of our nation.

Scan the battle names engraved in gold on the solemn black stone base of the statue ahead. Remembering their history matters to the Marines. Each place name you see represents a

lasting legacy of unflinching will, selfless *esprit de corps*, teamwork, discipline, and hope for victory. All these characteristics have made the Marines unique American patriots.

This memorial was built to honor all Marines, not just those who fought in World War II. It created a solemn place where we can recognize — and thank — Marines that have been part of our lives.

US MARINE CORPS WAR MEMORIAL | Wayside Exhibit 101A



USMC WAR MEMORIAL SIGNS

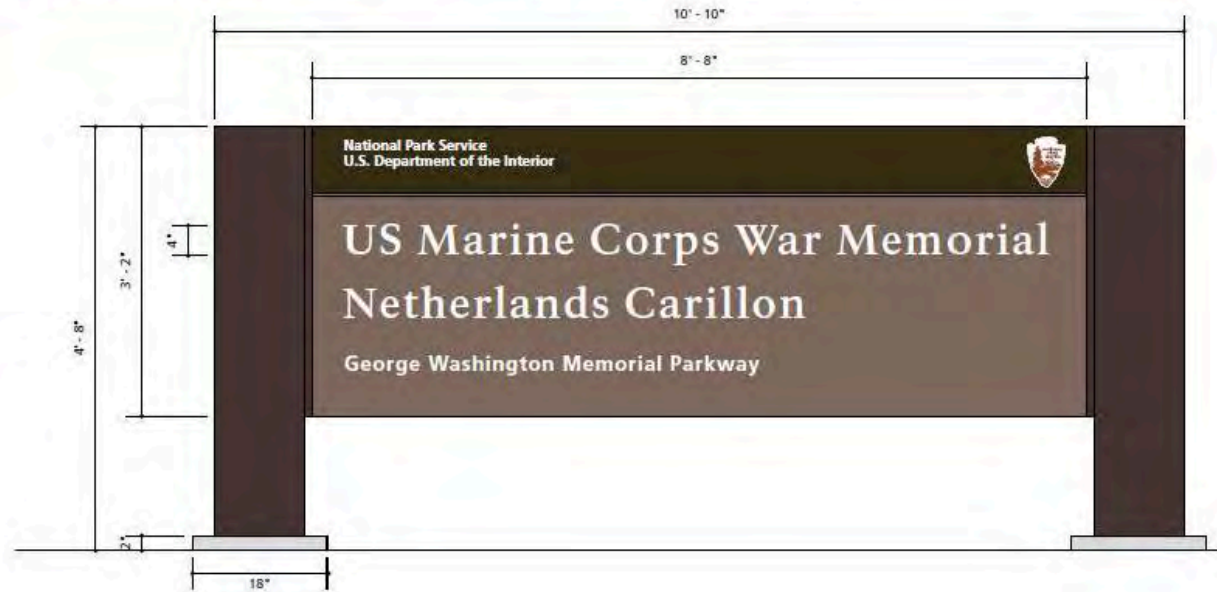
401: Entry Sign

Structure:

NPS standard double post ground mount with concrete post footings. Double post in NPS Dark Brown Spatter Coat finish.

Panel:

104" x 38" single-sided with black back western red cedar with routed graphics, painted finish, and embedded aluminum NPS arrowhead.



Sign Front Elevation  
Scale: 3/4" = 1' - 0"

Double Post Sign Example



USMC WAR MEMORIAL SIGNS

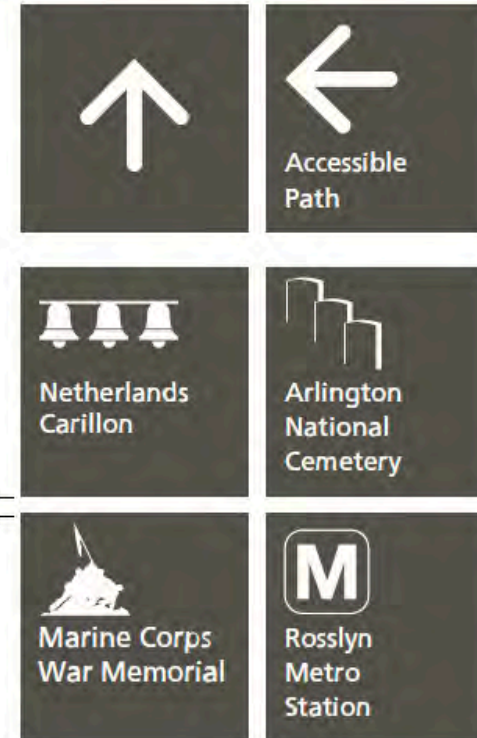
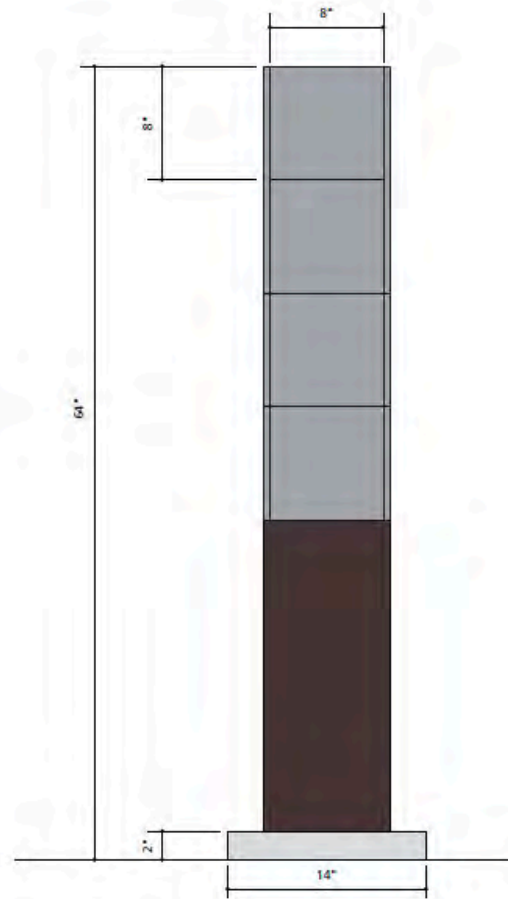
**500 Series: Wayfinding Sign**

**Structure:**

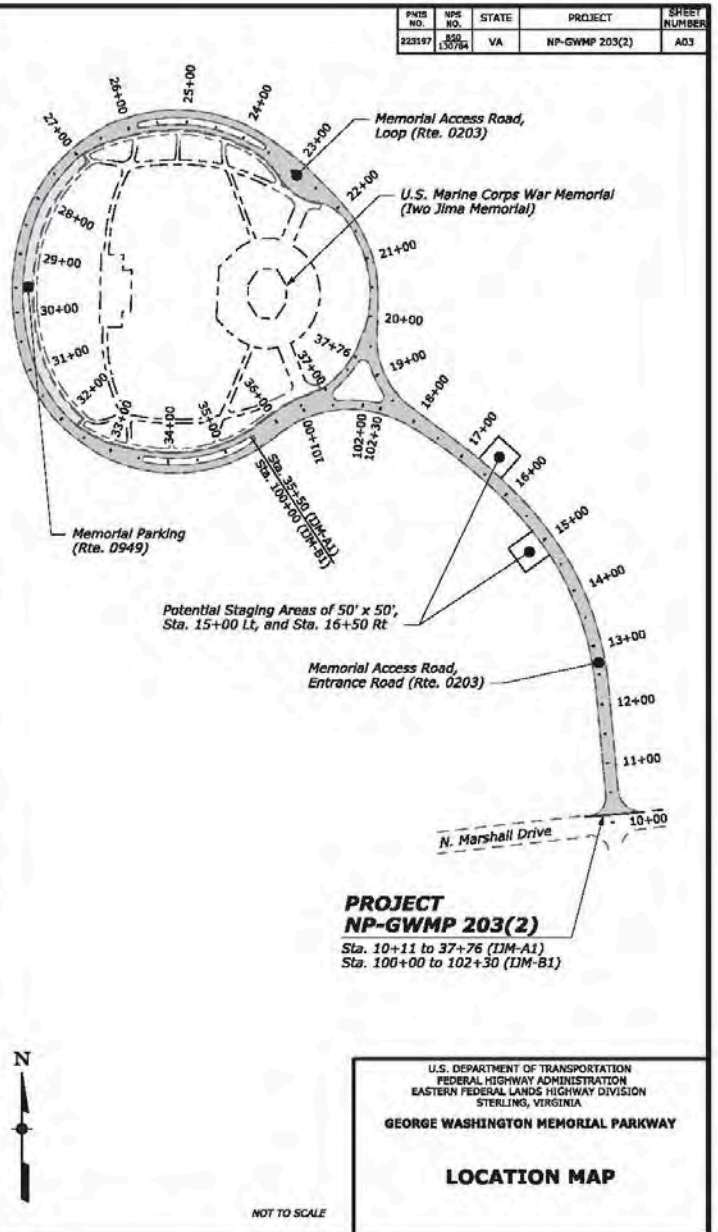
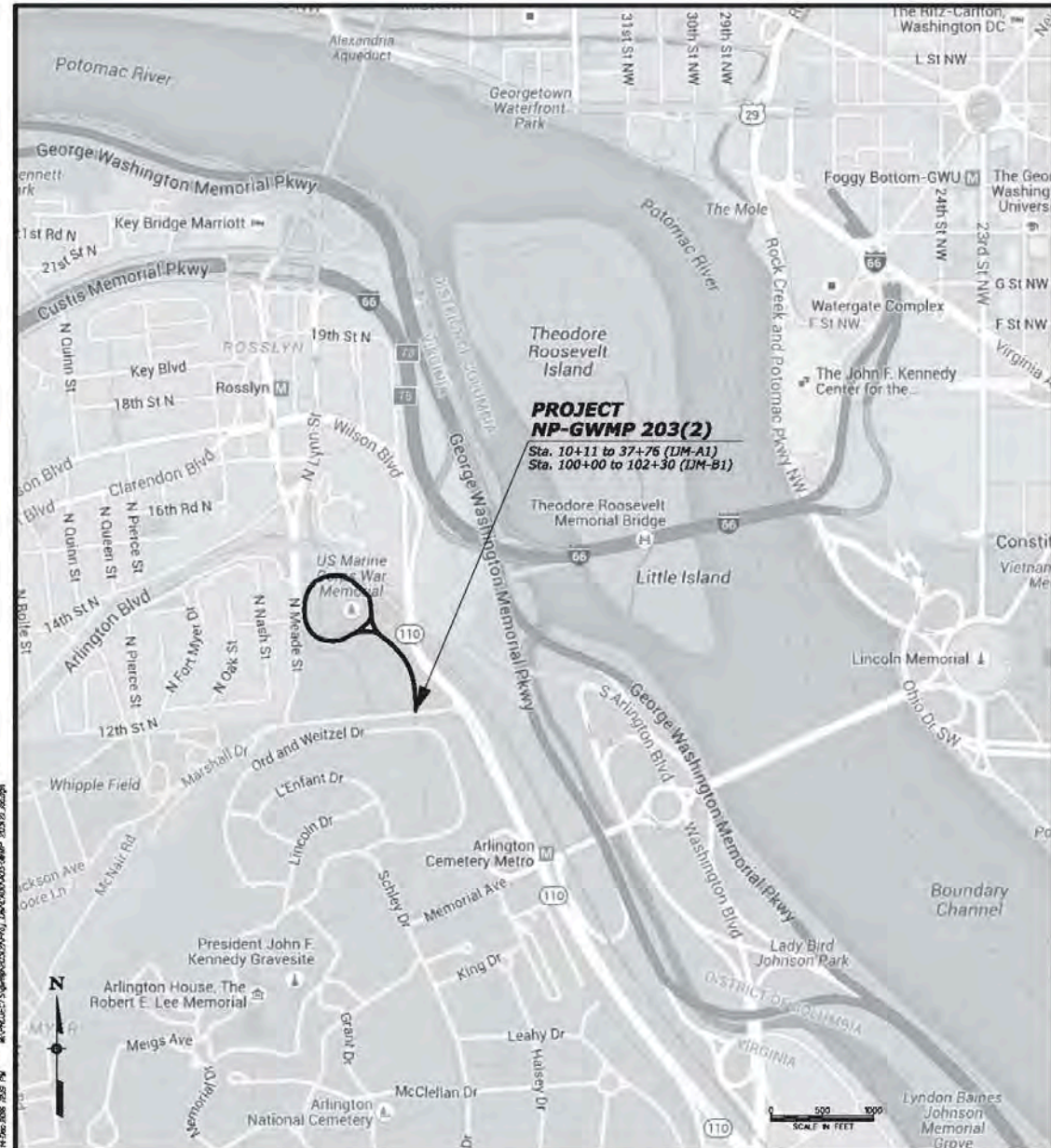
Aluminum tube post with cap, mounting slots for panel attachment and concrete post footings.

**Panel:**

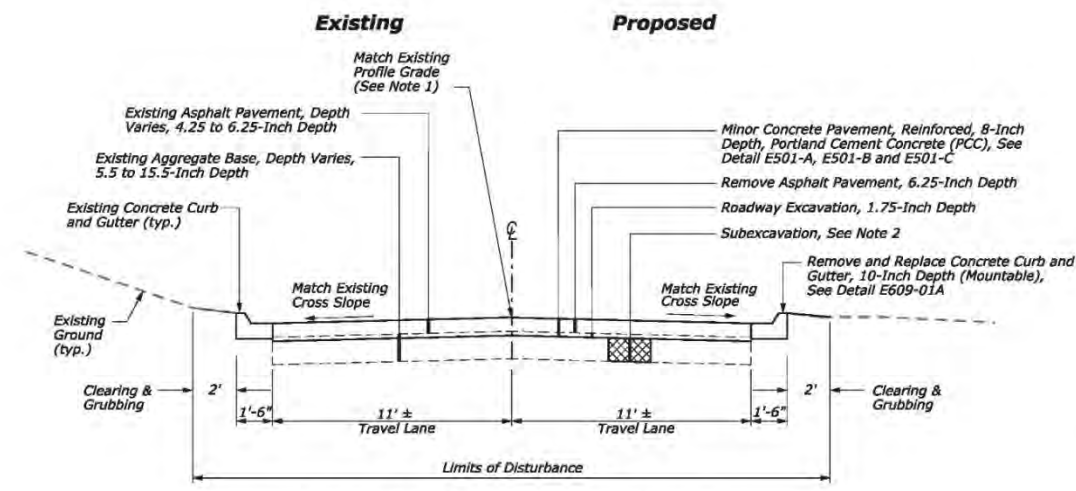
8" x 8" porcelain with 1/2" returns on all sides.



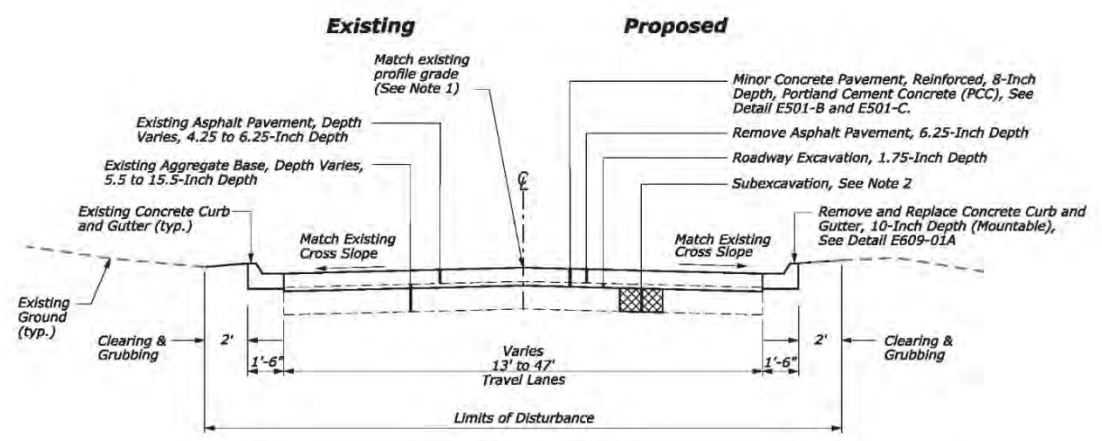
Sign Panels  
Scale: 3" = 1'-0"



PMS NO.	NPS NO.	STATE	PROJECT	SHEET NUMBER
223197	350-10781	VA	NP-GWMP 203(2)	801



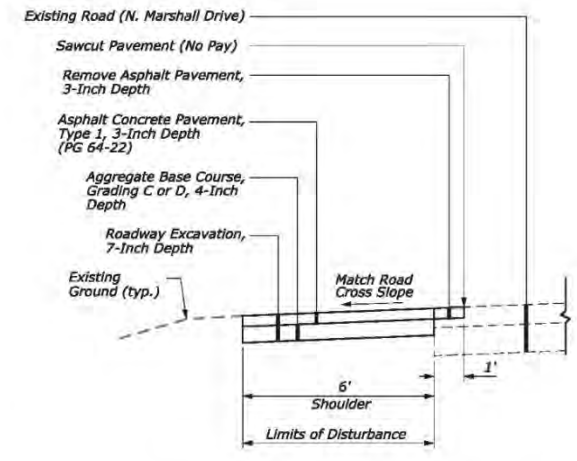
**PAVEMENT RECONSTRUCTION, TYPICAL 1**  
Sta. 10+11 to 18+62



**PAVEMENT RECONSTRUCTION, TYPICAL 3**  
Sta. 18+62 to 22+26  
Sta. 36+92 to 37+76  
Sta. 101+50 to 102+30 (LIM-B1)

**NOTES:**

1. Identify areas of deficient cross slopes and correct to achieve positive drainage as approved by the CO.
2. After removing existing asphalt pavement and any underlying base to the depths specified, proof-roll existing subgrade and replace unsuitable material as approved by the CO and in accordance with Section 204 and Subexcavation Details (Sheet 5 of 5).
3. Scarify existing aggregate base to a depth of 6 inches and compact prior to pavement placement in accordance with Section 303 (No pay).
4. Provide sod for all disturbed areas except paved areas in accordance with Section 627.



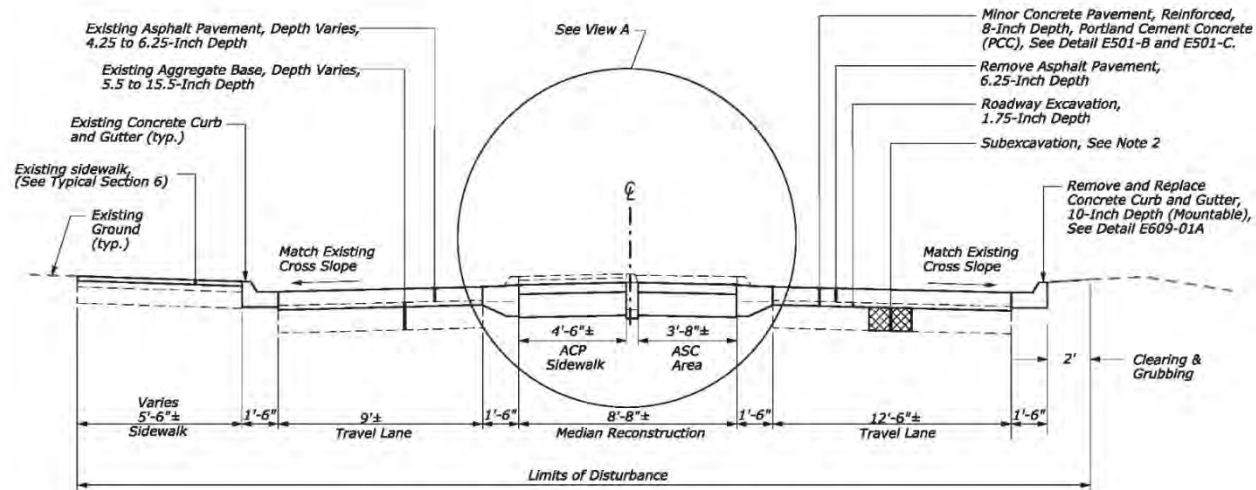
**SHOULDER RECONSTRUCTION, TYPICAL 2**  
Sta. 10+11, Rt

U.S. DEPARTMENT OF TRANSPORTATION  
FEDERAL HIGHWAY ADMINISTRATION  
EASTERN FEDERAL LANDS HIGHWAY DIVISION  
STERLING, VIRGINIA  
**GEORGE WASHINGTON MEMORIAL PARKWAY**  
**TYPICAL SECTIONS**

NOT TO SCALE

01/17/2017 10:58 AM I:\PROJECTS\2016\12\17\16\_CAD\DWG\16\_0210.dwg 10/20/16 ysp

PMIS NO.	NPS NO.	STATE	PROJECT	SHEET NUMBER
223197	10793	VA	NP-GWMP 203(2)	B03

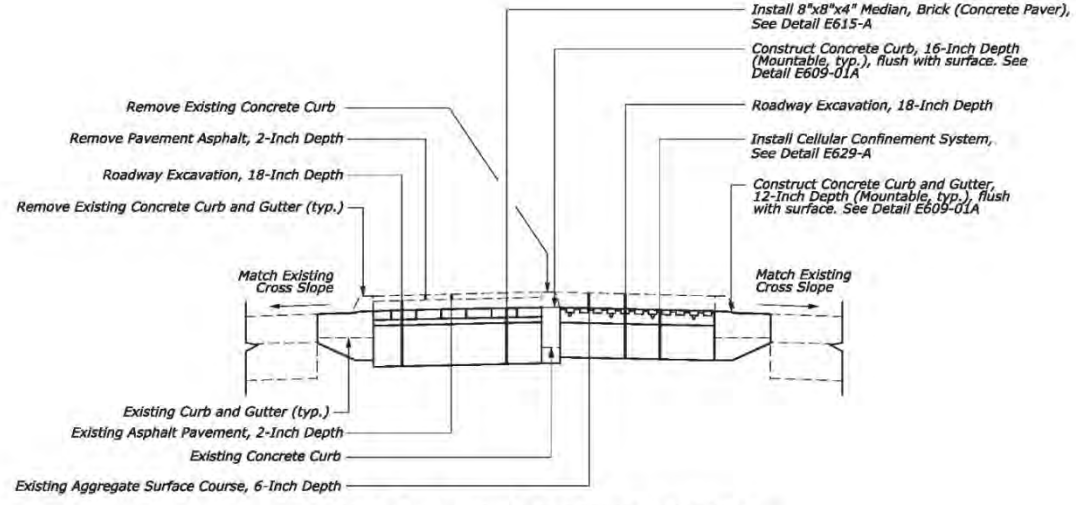


**PAVEMENT RECONSTRUCTION, TYPICAL 5**

Sta. 23+61 to 25+84  
Sta. 33+57 to 35+52

**NOTES:**

1. Identify areas of deficient cross slopes and correct to achieve positive drainage as approved by the CO.
2. After removing existing asphalt pavement and any underlying base to the depths specified, proof-roll existing subgrade and replace unsuitable material as approved by the CO and in accordance with Section 204 and Subexcavation Details (Sheet 5 of 5).
3. Scarify existing aggregate base to a depth of 6 inches and compact prior to pavement placement in accordance with Section 303 (No pay).
4. Provide sod for all disturbed areas except paved areas in accordance with Section 627.



**VIEW A - MEDIAN RECONSTRUCTION**

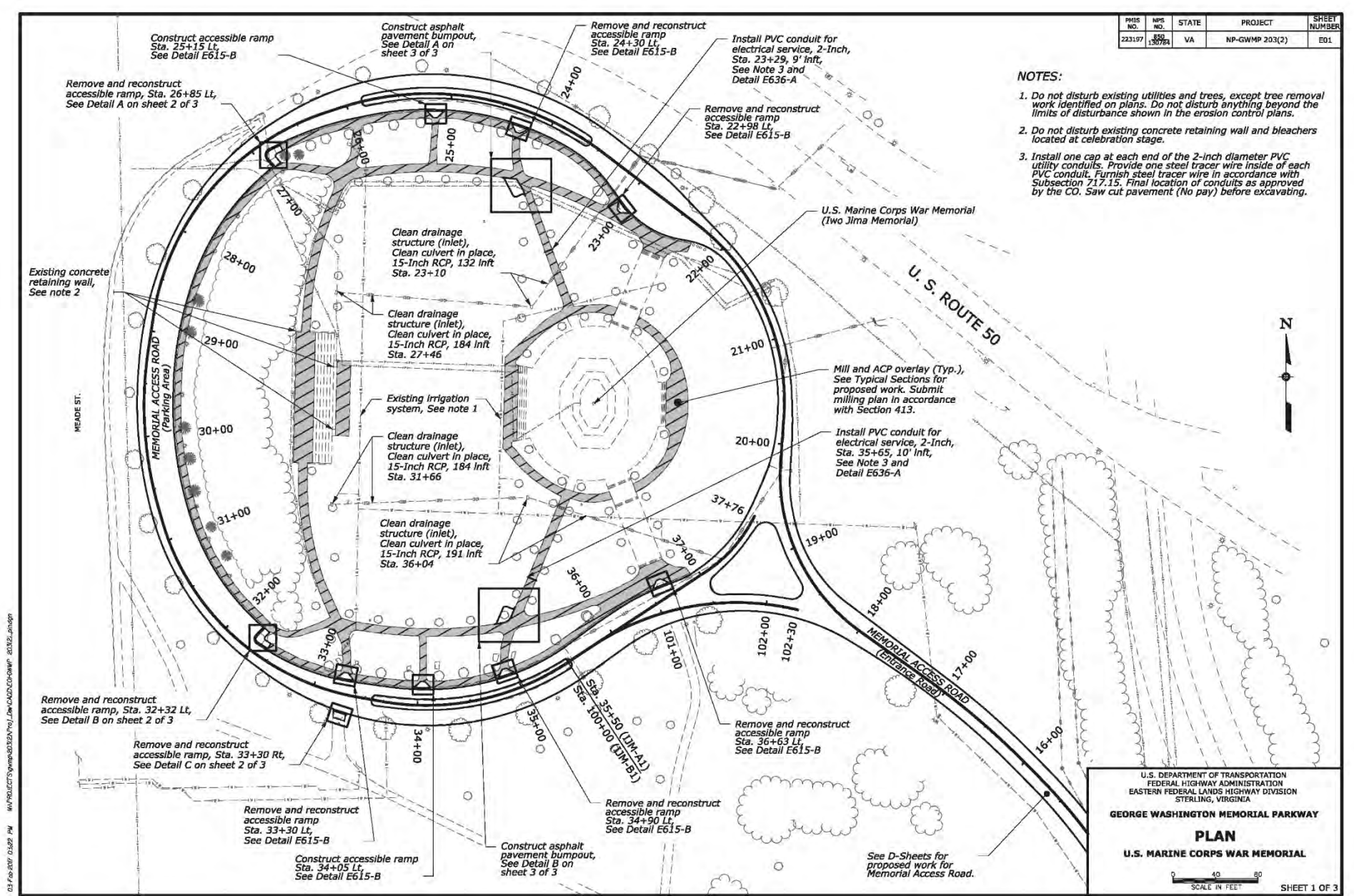
U.S. DEPARTMENT OF TRANSPORTATION  
FEDERAL HIGHWAY ADMINISTRATION  
EASTERN FEDERAL LANDS HIGHWAY DIVISION  
STERLING, VIRGINIA

**GEORGE WASHINGTON MEMORIAL PARKWAY**

**TYPICAL SECTIONS**

SHEET 3 OF 5

NOT TO SCALE



03 FEB 2017 0:52 PM \\N\PROJECTS\GWM\2013\ENR\Proj\Line\CADD\CD-GWMP\_803162.dwg

