



Executive Director's Recommendation

Commission Meeting: July 13, 2017

PROJECT National Desert Storm and Desert Shield Memorial Washington, DC	NCPC FILE NUMBER 7745
SUBMITTED BY United States Department of the Interior National Park Service	NCPC MAP FILE NUMBER 00.00(73.10)44280
REVIEW AUTHORITY Per 40 U.S.C. 8905, Public Law 113-291 and Public Law 115-18	APPLICANT'S REQUEST Approval of comments on site selection
	PROPOSED ACTION Approve comments as requested
	ACTION ITEM TYPE Staff Presentation

PROJECT SUMMARY

The National Park Service (NPS), in collaboration with the National Desert Storm War Memorial Association, has submitted two potential sites for the proposed Desert Storm and Desert Shield Memorial for Commission review and comment. The Association is the project sponsor of the memorial. Congress authorized the establishment of the memorial in Public Law 113-291, which states the Association may establish the National Desert Storm and Desert Shield Memorial as a commemorative work on Federal land in the District of Columbia to commemorate and honor those who, as a member of the Armed Forces, served on active duty in support of Operation Desert Storm or Operation Desert Shield.

Through Public Law 115-18, Congress authorized the memorial to be located within Area I as defined by the Commemorative Works Act (CWA). The CWA defines approval requirements related to the location, design, and construction of commemorative works in the District of Columbia and its environs. The National Capital Planning Commission (NCPC) and the US Commission of Fine Arts (CFA) approve site and design for new commemorative works.

The Association, along with NPS, developed a series of site selection criteria in order to evaluate potential locations for the proposed memorial. The criteria were applied to the potential memorial sites listed in the *Memorials and Museums Master Plan*. After several rounds of evaluation, including consultation with the National Capital Memorial Advisory Commission (NCMAC), two sites were identified for further consideration. The two sites include an area near the Memorial Circle, located near Arlington National Cemetery, and the terminus of Constitution Avenue, located near 23rd Street, NW, north of the Lincoln Memorial.

KEY INFORMATION

- Operations Desert Storm and Desert Shield resulted from the 1990 invasion of Kuwait by Iraq. An international coalition was assembled to liberate the country and prevent further conflict.
- The Commemorative Works Act (CWA) establishes requirements for building commemorative works on federal lands within the District of Columbia and its environs. It applies to lands under jurisdiction of the US Department of the Interior (DOI) and the US General Services Administration (GSA).
- In addition to the CWA site location criteria, the sponsor, along with NPS, has developed more refined site location criteria for the project.
- In general, in accordance with the CWA, the key benchmarks for authorizing a new monument are summarized below:
 - (1) Congress authorizes each new monument purpose (subject) and a monument sponsor by separate federal law.
 - Public Law 113-291 states the Association may establish the National Desert Storm and Desert Shield Memorial as a commemorative work, on Federal land in the District of Columbia to commemorate and honor those who, as a member of the Armed Forces, served on active duty in support of Operation Desert Storm or Operation Desert Shield.
 - Public Law 115-18 authorizes the memorial to be located within Area I as defined by the CWA
 - (2) The sponsor consults with the National Capital Memorial Advisory Commission (NCMAC) on alternative sites and design concepts.
 - NPS, in collaboration with the Association, submitted two potential memorial sites for consideration, including the Memorial Circle area and the Constitution Avenue terminus near 23rd Street, NW in Washington, DC.
 - NCMAC commented favorably on advancing both sites for further evaluation at its May 16, 2017 meeting.
 - (3) NCPC, the Commission of Fine Arts (CFA) and the Department of Interior (DOI) must each approve the site and design for new commemorative works.
 - The site selection analysis of potential memorial locations is an early step towards these approvals.
 - CFA has not yet commented on the potential sites.
 - (4) NCPC, CFA and DOI must approve and permit the final site and design for each new memorial, after the steps above are completed. NPS is generally responsible for the long-term maintenance and interpretation of monuments and memorials.

RECOMMENDATION

The Commission:

Regarding the Constitution Avenue site:

Finds the Constitution Avenue site provides a pedestrian-accessible location in close proximity to the National Mall, along with a strong thematic connection to the Vietnam Veterans Memorial.

Recommends the proposed memorial design demonstrate how the reestablishment of Constitution Avenue and reconfiguration of the surrounding transportation network could be accommodated in the future.

Notes that several major infrastructure projects are proposed for the Constitution Avenue site that may impact the memorial design, including the DC Water Potomac River Tunnel and Army Corps of Engineers Potomac Park Levee; and therefore

Requests that NPS and the sponsor work with the appropriate agencies to identify any constraints or coordination necessary for the Constitution Avenue site; and further provide that information to the Commission as part of the next submission.

Regarding the Memorial Circle site:

Finds the Memorial Circle site provides a thematic connection to Arlington National Cemetery and other nearby military memorials, but is challenged by limited pedestrian accessibility.

Notes the site is located between the travel lanes of the George Washington Parkway and Washington Boulevard, and the adjacent road network may detract from a contemplative and safe environment necessary for a successful memorial.

Regarding both sites:

Notes both sites are located in important historic and cultural landscapes, including the foreground to Arlington National Cemetery and the setting of the Lincoln Memorial; and therefore any proposed commemoration should minimize visual impacts to those landscapes and associated views.

Requests that the applicant develop one or more alternative design concepts for both sites, including variations in scale, placement and orientation. The next submission should provide details about the physical relationship of the monument to the surrounding context, including access and preservation of historic landscapes, and provide information about program needs at each site.

PROJECT REVIEW TIMELINE

Previous actions	– None
Remaining actions (anticipated)	<ul style="list-style-type: none">– Review of concept memorial design(s) within proposed site(s)– Approval of preliminary memorial and site development plans– Approval of final memorial and site development plans

PROJECT ANALYSIS

Executive Summary

NPS, in collaboration with the National Desert Storm War Memorial Association, has submitted the site selection analysis of potential memorial locations. Staff have analyzed the sites against the CWA's guidance on siting commemorative works and the site selection criteria established by the applicant. Both sites have the potential to be successful memorial locations, the potential constraints identified through the staff analysis will require further evaluation as the memorial design advances. As such, staff recommends the **Commission request that the applicant develop one or more alternative design concepts for both sites, including variations in scale, placement and orientation. The next submission should provide details about the physical relationship of the monument to the surrounding context, including access and preservation of historic landscapes, and provide information about program needs at each site.**

Analysis

Staff analyzed this project using guidance in the Commemorative Works Act (CWA), the Comprehensive Plan, and in consideration of the applicant's site selection criteria. A general principle set forth in the Comprehensive Plan is to protect and improve the open space character of the Monumental Core and the integrity of each memorial and park element. Further, the Comprehensive Plan includes policies to enhance the quality of the visitor experience to the Nation's Capital, particularly at major cultural sites, such as Arlington National Cemetery and the Monumental Core.

The CWA (40 U.S.C. 8905) includes decision criteria for site approval:

- Surroundings – to the maximum extent possible, a commemorative work shall be located in surroundings that are relevant to the subject of the work.
- Location – a commemorative work shall be located so that it does not interfere with or encroach on, an existing commemorative work, and to the maximum extent practicable, it protects open space, existing public use, and cultural and natural resources.

The NPS and the Association have also established the following site selection criteria:

- Located within the District of Columbia
- Accessible to pedestrians, transit, and visitors; and meets Architectural Barriers Act Accessibility Standard (ABAAS)
- Near other visitor destinations
- Thematically connected to the memorial
- Minimal infrastructure improvements
- Appropriate environment for reflection
- Safe environment for both visitors and memorial features, and minimal potential maintenance issues of memorial features
- Resilient to the environment and the potential effects of climate change; and enables sustainable design practices

The Association has also indicate their preference for a site at least 1.5 acres in size and able to accommodate a minimum of 80-100 people.

Operation Desert Storm and Desert Shield represented a coalition of 34 countries, an unparalleled international effort led by American Armed Forces to liberate Kuwait. Almost 700,000 American service members participated, and ultimately nearly 300 members gave their lives in protection of their country. The operations were an unqualified combat success that restored faith in the prowess of the US military. As such, the event holds a unique place in history by helping close the wounds of the Vietnam War, including the treatment of returning service members, and offering the respect given now to veterans of Iraq and Afghanistan.

Constitution Avenue Terminus

The Constitution Avenue site is located southwest of the intersection of 23rd Avenue, NW and Constitution Avenue, just north of the Lincoln Memorial. The site area is approximately 3.8 acres, and is currently open lawn utilized for recreational purposes. Exit ramps from the Theodore Roosevelt Bridge (I-66) form the northern boundary of the site, while ramps to the E Street Expressway and Rock Creek Parkway form the western boundary. The southern boundary is defined by the limits of the Reserve, as defined in the CWA. As provided by the Congressional authorization, the memorial may be in Area I only. The US Institute of Peace is located to the north, the future Vietnam Veterans Memorial Visitor Center to the east, and the Lincoln Memorial to the south. A combination of road infrastructure and recreational areas are located to the west. Sidewalks provide pedestrian access along the north and eastern portions of the site. At one time, Constitution Avenue extended to the west and terminated at the belvedere overlooking the Potomac River. That connection no longer exists due to the network of roads and ramps that currently traverse the area.

Of the two sites, this location provides the strongest thematic connection. As noted previously, Desert Storm and Desert Shield, and the respond to returning service members, is seen as an

important closure to the Vietnam War-era. The location near the Vietnam Veterans Memorial and future visitor would help reinforce this connection. In addition, this location is the more accessible of the two sites due to its proximity to other significant visitor destinations, such as the Lincoln Memorial. Pedestrian access is possible through the existing sidewalk network along the east and south portions of the site. Staff therefore recommends the **Commission find the Constitution Avenue site provides a pedestrian-accessible location in close proximity to the National Mall, along with a strong thematic connection to the Vietnam Veterans Memorial.**

The site's location at a gateway to the monumental core and in a location of both existing and proposed infrastructure also poses a number of challenges. The existing roadway network and system ramps is particularly challenging for pedestrians; and further, it does not create an attractive entry into the city. Reprogramming and reconfiguration this area as a memorial site could improve the general character, and also serve as a catalyst for the programming of the adjacent interstitial greenspaces within the significant roadway infrastructure that dominates the area. There are several other Memorials and Museum Master Plan (2M Plan) sites within this immediate area. Improving circulation and pedestrian activity to this site may in turn make these other adjacent greenspaces and sites more viable for development for memorials or other public uses. The re-extension of Constitution Avenue in its historic alignment would be particularly beneficially. As such, staff suggests the **Commission recommend the proposed memorial design demonstrate how the re-establishment of Constitution Avenue and reconfiguration of the surrounding transportation network could be accommodated in the future.**

Two other possible infrastructure projects have the potential to affect the Constitution Avenue site, and therefore may impact the location and configuration of any proposed memorial. DC Water, as part of its Clean Rivers Project, is currently working with NPS on the potential alignment of the Potomac River Tunnel. This tunnel, similar to that currently under constructed along the Anacostia River, will help control combined sewer outfalls. The site is under consideration as a mining site or a drop shaft for access to the proposed tunnel. The project would be implemented between 2020 and 2030, and the site would be restored to lawn after completion, as the majority of the work will be underground.

In addition, the Army Corps of Engineers is currently evaluating the site for the Potomac Park Levee. The earthen berm would vary in height, but would generally be no more than five feet above the adjacent grade. Ultimately, the flood protection system would extend and connect to the 17th Street levee that was recently constructed. The project is not currently funded.

Given these potential demands of the site, staff recommends the **Commission note that several major infrastructure projects are proposed for the Constitution Avenue site that may impact the memorial design, including the DC Water Potomac River Tunnel and Army Corps of Engineers Potomac Park Levee.** Staff also suggests the **Commission requests that NPS and the sponsor work with the appropriate agencies to identify any constraints or coordination necessary for the Constitution Avenue; and further provide that information to the Commission as part of the next submission.**

Memorial Circle Area

The Memorial Circle site is located on Columbia Island, west of the Potomac River and just south of the traffic circle created by the intersection of Memorial Avenue and the George Washington Memorial Parkway. The site area is approximately 9.3 acres, and is currently open lawn and landscaping. The site is bounded by a series of highly traveled roads and ramps. Arlington National Cemetery (ANC) is located to the west and the Arlington Memorial Bridge is located to the northeast. The closest pedestrian access is along Memorial Avenue to the north, but it does not enter the proposed site.

This site is visually prominent and near several other significant memorials and historic sites, including the Women in Military Memorial and Arlington House, along with the Cemetery. Pedestrian access is limited due to the lack of signaled pedestrian crossings and high volumes of traffic along the George Washington Parkway. Currently, the site is primarily viewed from passing cars. Therefore, staff recommends the **Commission find the Memorial Circle site provides a thematic connection to Arlington National Cemetery and other nearby military memorials, but is challenged by limited pedestrian accessibility.**

Without significant improvements to the accessibility, the site is likely to be perceived as a “drive-by” location. Further, nearby road network presents challenges regarding noise and safety for visitors. As such, staff recommends the **Commission note the site is located between the travel lanes of the George Washington Parkway and Washington Boulevard, and the adjacent road network may detract from a contemplative and safe environment necessary for a successful memorial.**

Finally, staff notes that both sites are located in landscapes with important historic and cultural significance. The Memorial Circle site is a prominent location along the George Washington Parkway, and the clearing provides a setting to Arlington National Cemetery and the ridgeline upon which Arlington House sits. The site is also a part of Lady Bird Johnson Park. The Constitution Avenue site forms part of the setting for the Lincoln Memorial and is an important gateway to the monumental core. The nearby Vietnam Veterans Memorial and visitor's center both were challenged to minimize their visual impact upon the landscape. Therefore, staff recommends the **Commission note both sites are located in important historic and cultural landscapes, including the foreground to Arlington National Cemetery and the setting of the Lincoln Memorial; and therefore any proposed commemoration should minimize visual impacts to those landscapes and associated views.**

CONFORMANCE TO EXISTING PLANS, POLICIES AND RELATED GUIDANCE

Comprehensive Plan for the National Capital

As noted above, the planning and design comments are designed to ensure the proposal meets basic goals of the Comprehensive Plan.

Commemorative Works Act

The Commemorative Works Act (CWA) contains a set of foundational level decision criteria that NCPC is required to use when considering site and design proposals for commemorative works. Specifically, the CWA states that in considering site and design proposals, NCPC shall be guided by a number of criteria, including surroundings, location, material, landscape features, and site specific guidelines. As noted above, the planning and design comments are designed to ensure the proposal broadly meets the CWA criteria.

Memorials and Museums Master Plan

The 2001 Memorials and Museums Master Plan ("2M Plan") provides guidance regarding the placement of future commemorative works. In particular, the Plan seeks to reinforce the historic urban design features of the city, minimize intrusion on existing memorials, and reduce adverse environmental and transportation impacts and enhance positive economic and other effects on local neighborhoods. The Plan states that memorials, when properly placed and sensitively designed, can provide a source of community identity and pride, while bolstering revitalization efforts. The sites currently under consideration are both identified as prime sites for memorials within the 2M Plan.

National Historic Preservation Act

NCPC and NPS each have an independent responsibility to comply with Section 106 of the National Historic Preservation Act (NHPA). NCPC will complete the requirements of Section 106 prior to the Commission's final approval of the project.

National Environmental Policy Act

NCPC and NPS will each have an independent responsibility to comply with the National Environmental Policy Act (NEPA); NCPC's responsibility stems from its approval authority over the site and design of the monument. NPS will prepare an Environmental Assessment (EA) to identify alternatives and assess the potential impacts of the proposed memorial. NCPC is a cooperating agency for purposes of the EA, and NCPC staff will provide comments during the scoping period. A number of topics will be evaluated during the NEPA process, including urban design and visitor experience, historic and cultural resources, transportation systems and sustainability.

With its current review and action, the Commission is providing comments on the concept design for the project. Final NEPA documentation is not required at this time, but will be completed prior to the Commission's action on the final site and memorial design.

CONSULTATION

Coordinating Committee

The Coordinating Committee reviewed the proposal at its June 21, 2017 meeting. Without objection, the Committee forwarded the proposed comments on site selection to the Commission with the statement that the proposal has been coordinated with all participating agencies. The District of Columbia State Historic Preservation Office (DC SHPO) noted that their coordination is conditioned upon satisfactory completion of the Section 106 review process, including the execution of Memoranda of Agreement, as applicable. The participating agencies were: NCPC; the District of Columbia Office of Planning; the District Department of Transportation; the District Department of Energy and Environment; the DC SHPO; the General Services Administration; and the Washington Metropolitan Area Transit Authority.

U.S. Commission of Fine Arts

The Commission of Fine Arts (CFA) has not yet reviewed the project. They are expected to review the sites and memorial at a future meeting.

National Capital Memorial Advisory Commission

Section 8905(a)(1) of the Commemorative Works Act requires memorial sponsors to consult with the National Capital Memorial Advisory Committee (NCMAC) on the selection of alternative sites and design concepts prior to submitting the project to NCPC for formal review. NCMAC reviewed the site selection analysis on January 28, 2016 and May 16, 2017. Initial site selection included 18 sites, with the two finalist sites were advanced with NCMAC support. The proposed memorial design on the selected site will also be submitted to NCMAC for review prior to final approval by NCPC.

ONLINE REFERENCE

The following supporting documents for this project are available online:

- Submission Package
- Submission Letter
- Project Synopsis

Prepared by Matthew Flis
07/06/2017

POWERPOINT (ATTACHED)

NCPC File #7745

National Desert Storm and Desert Shield Memorial

Site Selection

National Park Service

Concept Review

NATIONAL DESERT STORM AND DESERT SHIELD MEMORIAL

Introduction

Operation Desert Storm/Desert Shield, involving more than half a million American servicemen and women, is the largest major military conflict of the 20th Century without a memorial. In 2014, the U.S. Congress authorized a memorial to commemorate and honor those, who, as a member of the Armed Forces, served on active duty in support of Operation Desert Storm or Operation Desert Shield to be placed on federal land within the District of Columbia in Public Law 113-291. In 2017, Congress authorized the potential location of the commemorative work within Area I in Public Law 115-18. This future memorial intends to create a meaningful and deeply moving sequential experience that informs visitors about the historical events of the operation. This commemorative work would memorialize the Americans who sacrificed their lives, reflect the unique environmental and battle conditions experienced by servicemen and women, and leave visitors with an enduring memory of the historical significance and moral accomplishments of Operation Desert Storm and Operation Desert Shield.

NATIONAL DESERT STORM AND DESERT SHIELD MEMORIAL

Purpose and Need

Purpose of the Memorial

- ▶ To commemorate and honor members of the Armed Forces who served on active duty in support of Operation Desert Storm or Operation Desert Shield

Need of the Memorial

- ▶ To carry out Public Law 113-291 and address the current lack of a formal place for commemoration of those who served during Operation Desert Storm or Operation Desert Shield



NATIONAL DESERT STORM AND DESERT SHIELD MEMORIAL

Site Selection Background

The National Desert Storm War Memorial (NDSWM) Association, the sponsoring organization for the NDSWM, conducted a site selection study in 2015-2016. The Association and the National Park Service (NPS) developed a series of criteria in order to identify a suitable location for the memorial on a site and that supports the stated purpose of the memorial. These criteria were then applied to the 100 potential memorial sites listed in the National Capital Planning Commission's *Memorials and Museums Master Plan*. Many of the sites in the document did not meet the criteria; however, the Board identified fourteen sites and areas that merited further consideration based on overall location and size. The list was later narrowed to ten sites and areas for more intensive analysis.

The Association presented its finding to the National Capital Memorials Advisory Commission (NCMAC) on January 28, 2016 and again on May 16, 2017. The Association presented the site selection process, including criteria at the 2016 meeting and NCMAC recommended the siting of the Memorial within Area I as defined by the Commemorative Works Act. Congress authorized siting within Area I in January 2017.

The full Site Selection Study evaluated a total of 18 sites. Two sites were selected as the most appropriate for further analysis and to explore potential concepts for how the site could accommodate a memorial. The two finalist sites, the Memorial Circle Area, Site 1, *Memorials and Museums Master Plan* and the Constitution Avenue Terminus Area, Site 6, *Memorials and Museums Master Plan* are analyzed in this submittal.

Memorial Background

In the wake of the end of the Cold War, international cooperation faced an uncertain future. Saddam Hussein's invasion of Kuwait in 1990 prompted the world to act, and the result was an unprecedented coalition that joined to liberate that country and prevent further violence and bloodshed. Upon return after a rapid victory, U.S. service members were greeted with a welcome of excitement and gratitude not seen in decades. Though 293 Americans perished or are missing and never returned from Operation Desert Storm/Desert Shield, not only did the conflict liberate an occupied country with broad international support, but it also revived the public's faith in the U.S. military and helped to heal the wounds of the Vietnam War.

- ▶ Congress authorized establishment of the National Desert Storm and Desert Shield Memorial in Public Law 113-291 on Federal land in the District of Columbia. This memorial is anticipated to be known as the National Desert Storm War Memorial
- ▶ Congress authorized the location of the commemorative work in Public Law 115-18 within Area I as defined under the Commemorative Works Act
- ▶ Work must be consistent with the Commemorative Works Act; Construction of the memorial will be sponsored and funded by the NDSWM Association
- ▶ The memorial will be maintained by the NPS

NATIONAL DESERT STORM AND DESERT SHIELD MEMORIAL

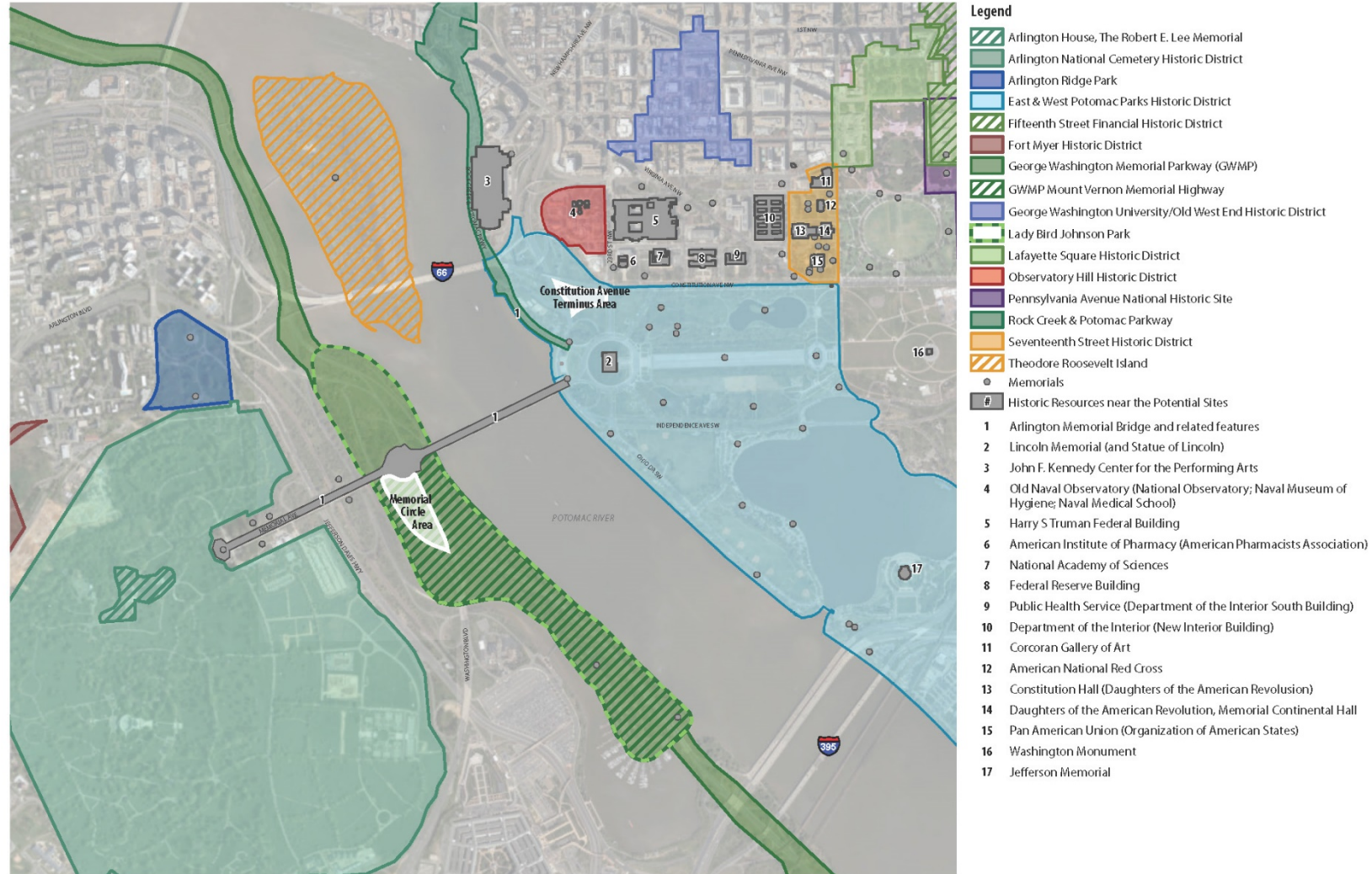
Site Location Map



— RESERVE - - - AREA I

NATIONAL DESERT STORM AND DESERT SHIELD MEMORIAL

Historic Resources in the Vicinity of Sites Under Consideration



Source: Esri, DigitalGlobe, GeoEye, Earthstar Geographics, CNES/Airbus DS, USDA, USGS, AeroGRID, IGN, and the GIS User Community

2,000 ft

NATIONAL DESERT STORM AND DESERT SHIELD MEMORIAL

The NPS and the Association are considering the Memorial Circle Area and the Constitution Avenue Terminus Area as potential sites for the Memorial. Analysis conducted for each of the sites includes visitor context, thematic context, access to Metrorail and pedestrian circulation, floodplains, and scale. The experiential context for each site is also identified.

In the case of Constitution Avenue Terminus Area, the site's location within the *Monumental Core Framework Plan* and DC Water's potential tunnel project are also indicated. These contextual efforts would not affect the Memorial Circle Area and are therefore not included in analysis of that site.

Design Intent

As part of the site selection process, multiple design considerations have been identified that influence the location of the memorial. The following considerations help inform the overall suitability of each potential memorial site and may inform the design once a site has been selected:

- ▶ **Complement the existing attributes and limitations of the site.** These include topography and drainage, floodplains, notable surrounding and nearby buildings and monuments, views into and out of the site, pedestrian and vehicular access routes to/from the site, universal accessibility, solar and wind exposure, and existing vegetation.
- ▶ **Study and analyze how a memorial would fit onto the site.** The scale and design of each alternative will be studied in relation to all of the attributes listed above.
- ▶ **Respect the historic context, preserve existing view sheds, and develop a poignant design;** one that is both meaningful to veterans and their families and harmonious with its setting beyond the boundaries of the site.
- ▶ **Create an intimate, reflective experience within a compact footprint for the memorial.**
- ▶ **Use precedent to inform the scale of the memorial.** Relative to previously built commemorative works, the memorial will have a smaller footprint than the WWII, Korea, and Vietnam memorials.
- ▶ **Connect with existing circulation while providing visual and acoustic buffers.** This should create a central sacred space for reflection.
- ▶ **Evoke the unique spatial qualities of the Kuwaiti desert.** This could be accomplished with low sloping walls and landforms that integrate the memorial into the surrounding landscape, direct circulation, provide dedicated commemorative space, and frame views to surrounding historic properties and the city.

Site Selection Process

Developed 9 preliminary site selection criteria:

- ▶ Within the District of Columbia
- ▶ At least 1.5 acres in size and able to accommodate a minimum of 80-100 people
- ▶ Accessible to pedestrians, transit, and visitors and meet ABAAS standards
- ▶ Near other visitor destinations
- ▶ Thematically connected to the memorial
- ▶ Minimal infrastructure improvements
- ▶ Appropriate environment for reflection
- ▶ Safe environment for both visitors and memorial features, and minimal potential maintenance issues of memorial features
- ▶ Resilient to the environment and the potential effects of climate change and enable sustainable design practices

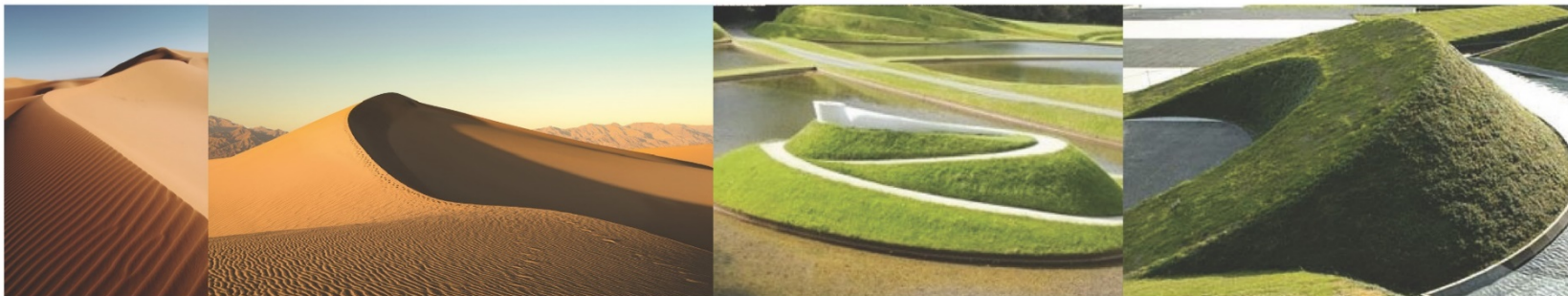


NATIONAL DESERT STORM AND DESERT SHIELD MEMORIAL

Design Parameters

The following design parameters are intended to ensure the Memorial provides an appropriate commemorative experience as well as fit within the context of the site. The Memorial should:

- ▶ Be compact in size with a footprint of less than 1.0 acre within a site of less than 2.0 acres
- ▶ Serve as more than a stand-alone object, and provide a place of reflection
- ▶ Maintain a generally low horizontal profile
- ▶ Be integrated within, and complementary to, the existing landscape
- ▶ Maintain existing trees, particularly designed rows or allees of trees, to the extent practicable
- ▶ Utilize existing circulation resources (sidewalks and pathways) to the extent practicable
- ▶ Provide minimal parking (likely to be universally accessible parking only)
- ▶ Be located outside of 100 year floodplain; if located within the 500 year floodplain, the Memorial must be flood resilient



NATIONAL DESERT STORM AND DESERT SHIELD MEMORIAL

Memorial Circle Area

The Memorial Circle Area is a 9.3-acre site located on Columbia Island. The site lies near Memorial Bridge, Memorial Drive, and the George Washington Memorial Parkway. This site was identified as Site 1 in the *Memorials and Museums Master Plan*.



NATIONAL DESERT STORM AND DESERT SHIELD MEMORIAL

Memorial Circle Area

Historical Photographs



MEMORIAL CIRCLE SITE - 1931



MEMORIAL CIRCLE SITE - CIRCA 1940



MEMORIAL CIRCLE SITE - 1973

NATIONAL DESERT STORM AND DESERT SHIELD MEMORIAL

Memorial Circle Area

Current Photographs



The Memorial Circle Area offers views of the Washington Monument as well as a more natural landscape surrounding. The Memorial would offer the opportunity to integrate itself into the landscape, as well as connect to the existing trail network.

NATIONAL DESERT STORM AND DESERT SHIELD MEMORIAL

Memorial Circle Area

Visitor Context

The Memorial Circle Area has attractions with four million visitors within a half mile.



NATIONAL DESERT STORM AND DESERT SHIELD MEMORIAL

Memorial Circle Area

Thematic Context

Arlington National Cemetery, the Women in Military Service for America Memorial, and the Lincoln Memorial offer thematic links for NDSWM at this site.





MEMORIAL CIRCLE STUDY AREA - ACCESS FROM METRO

NATIONAL DESERT STORM AND DESERT SHIELD MEMORIAL

Memorial Circle Area

Circulation and Constraints

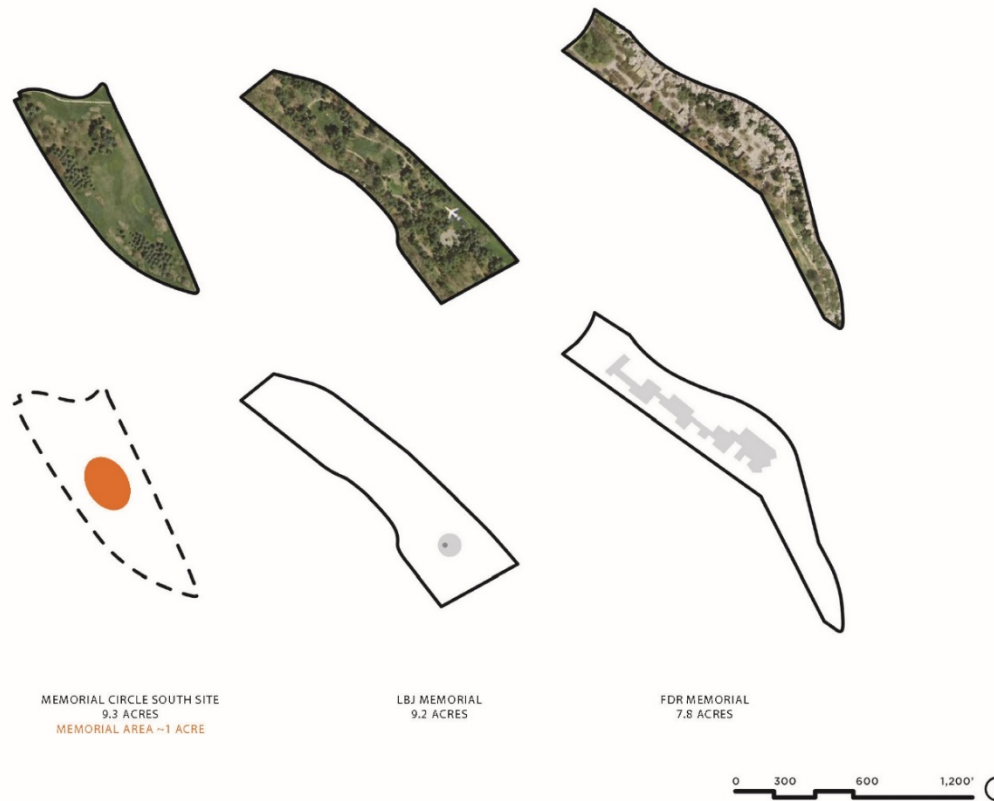
The site is largely outside the floodplain. New infrastructure, such as utilities, would be required.



NATIONAL DESERT STORM AND DESERT SHIELD MEMORIAL

Memorial Circle Area

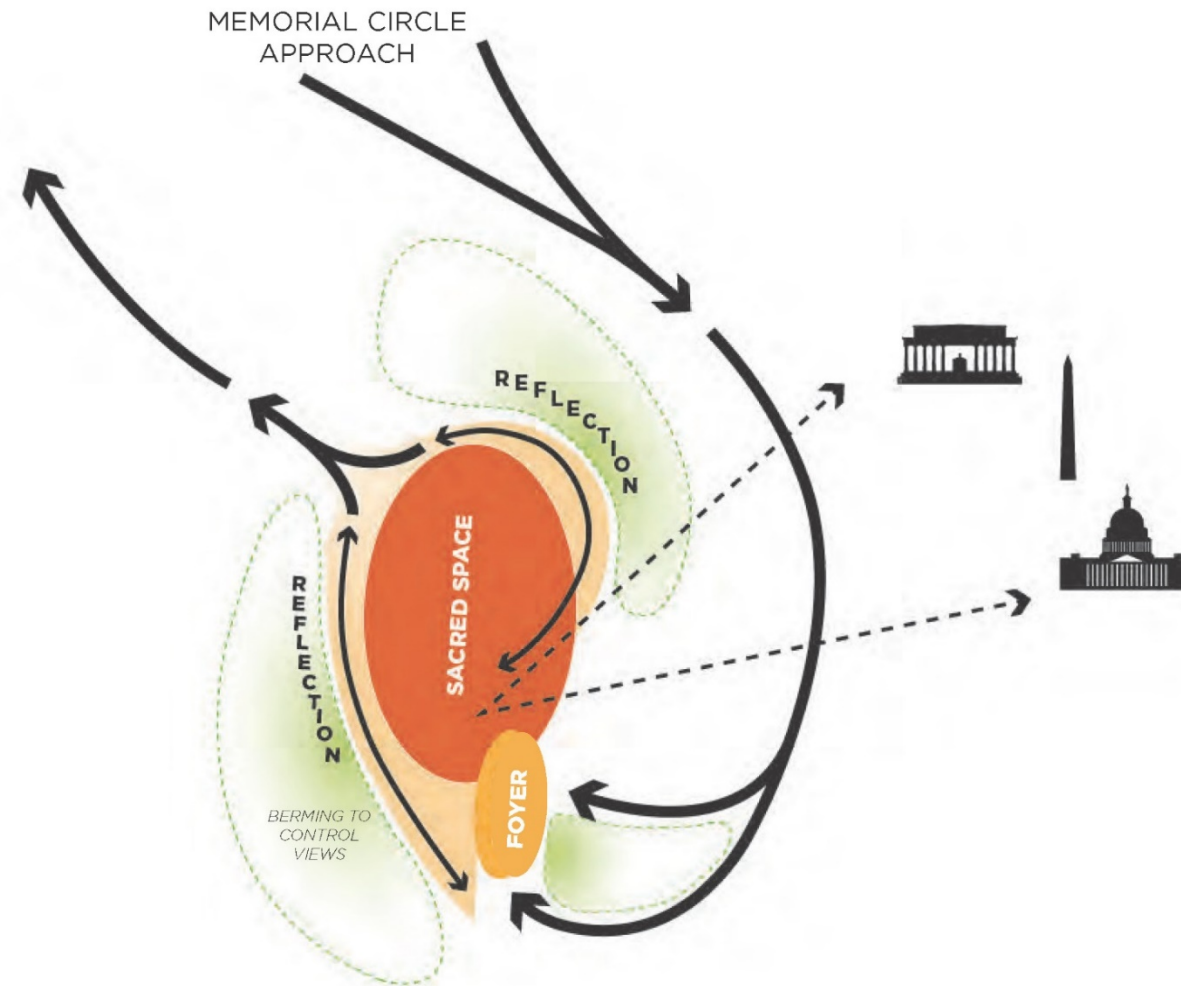
Scale Comparisons



NATIONAL DESERT STORM AND DESERT SHIELD MEMORIAL

Memorial Circle Area

Experiential Concept



NATIONAL DESERT STORM AND DESERT SHIELD MEMORIAL

Memorial Circle Area

Potential Future Memorial Sites

The Memorial Circle Area could accommodate other future memorials that would want to be located in proximity to the NDSWM.



Potential commemorative sites



Arlington Cemetery Metro Station



NATIONAL DESERT STORM AND DESERT SHIELD MEMORIAL

Constitution Avenue Terminus Area

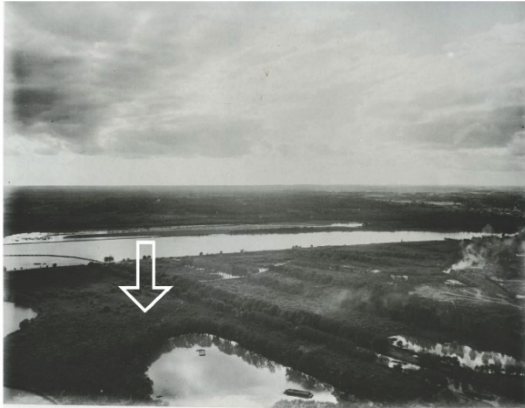
The Constitution Avenue Terminus Area is a 3.8-acre site at the southwest corner of the intersection of Constitution Avenue NW and 23rd Street NW. This site was identified as Site 6 in the *Memorials and Museums Master Plan*.



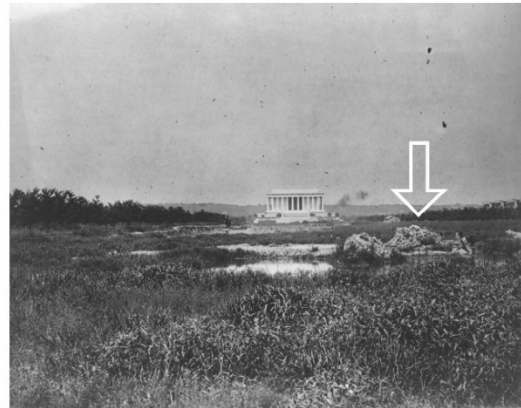
NATIONAL DESERT STORM AND DESERT SHIELD MEMORIAL

Constitution Avenue Terminus Area

Historical Photographs



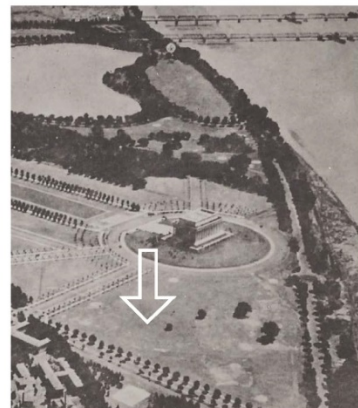
CONSTITUTION AVENUE SITE - MID 19TH CENTURY



CONSTITUTION AVENUE SITE - 1917



CONSTITUTION AVENUE SITE - 1919



CONSTITUTION AVENUE SITE - 1925



CONSTITUTION AVENUE SITE - 1935

NATIONAL DESERT STORM AND DESERT SHIELD MEMORIAL

Constitution Avenue Terminus Area

Current Photographs



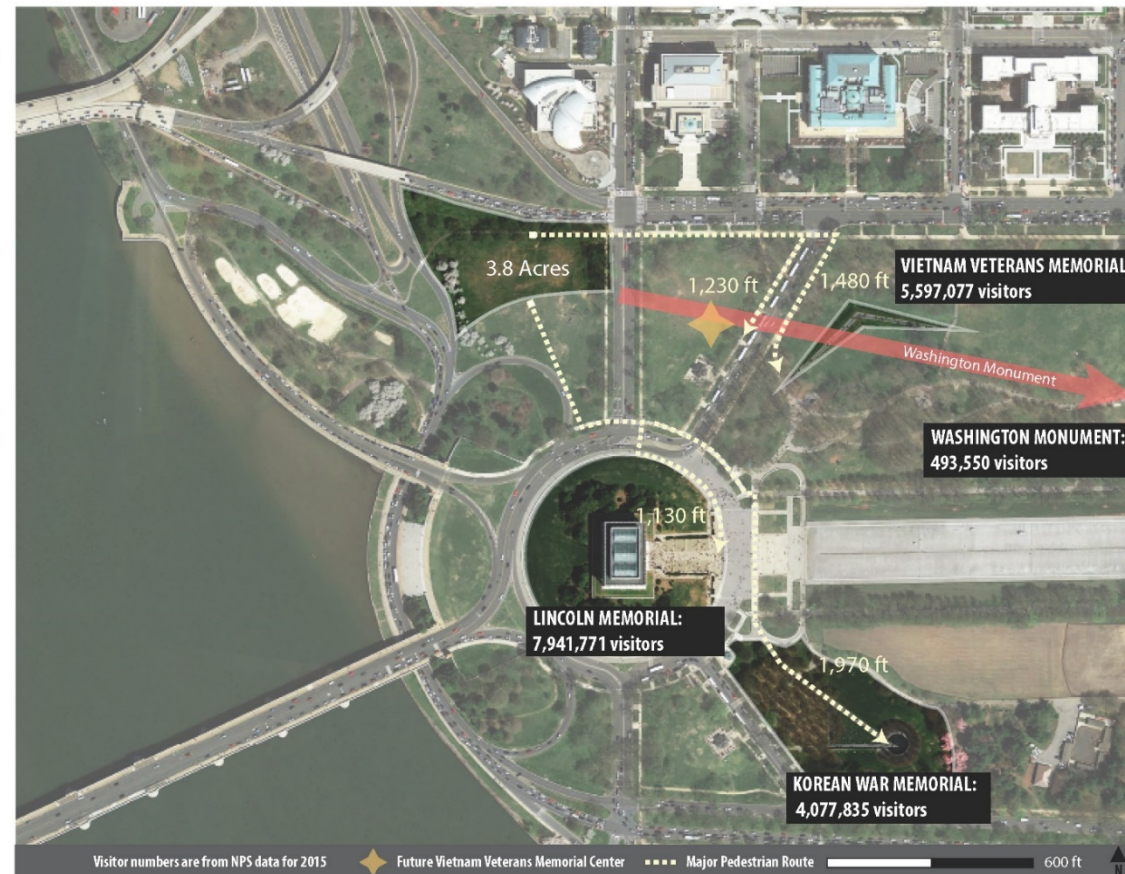
The landforms of the Memorial would allow for the integration of 100-year flood protection into the memorial design, which would enhance and protect a larger area of the Constitution Avenue Terminus Area site. The Memorial landforms could also be used as part of the enhanced Potomac Levee System project.

NATIONAL DESERT STORM AND DESERT SHIELD MEMORIAL

Constitution Avenue Terminus Area

Visitor Context

The Constitution Avenue Terminus Area has attractions with eight million visitors within a half mile (18 million visitors cumulatively).



NATIONAL DESERT STORM AND DESERT SHIELD MEMORIAL

Constitution Avenue Terminus Area

Thematic Context

The site provides a highly relevant thematic nexus to Vietnam Veterans Memorial and other 20th Century war memorials, including the Korean War Memorial and the World War II Memorial, as well as close proximity and access to these and other memorials.



NATIONAL DESERT STORM AND DESERT SHIELD MEMORIAL

Constitution Avenue Terminus Area

Access from Metro



NATIONAL DESERT STORM AND DESERT SHIELD MEMORIAL

Constitution Avenue Terminus Area

Circulation and Constraints

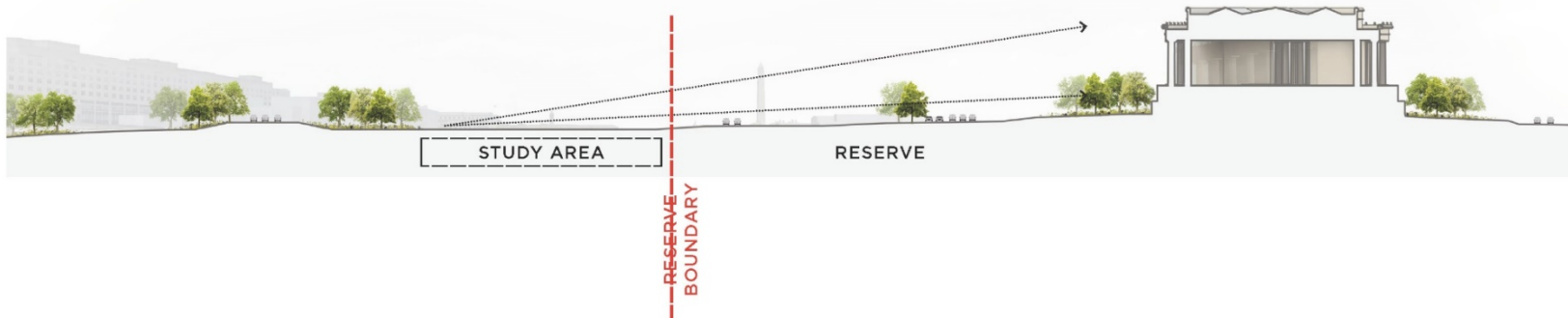
The site would accommodate the desired program to a high level, but would present minor challenges in terms of resiliency due to the location of the floodplain. However, a levee is being evaluated for the area to help protect downtown Washington from flooding. The memorial would be coordinated with the potential levee.



NATIONAL DESERT STORM AND DESERT SHIELD MEMORIAL

Constitution Avenue Terminus Area

Existing Section

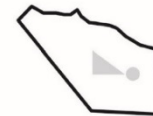
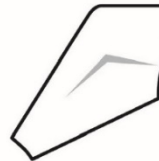


The Constitution Avenue Terminus Area site offers the opportunity to enhance the existing Constitution allee and tree planting framework of the National Mall. The site would allow the Memorial to sit within the sloping topography and present a horizontal profile that maintains views from the Lincoln Memorial and surrounding streets.

NATIONAL DESERT STORM AND DESERT SHIELD MEMORIAL

Constitution Avenue Terminus Area

Scale Comparisons



CONSTITUTION AVE SITE
3.8 ACRES
MEMORIAL AREA ~1 ACRE

VIETNAM MEMORIAL
7.4 ACRES

KOREAN WAR MEMORIAL
5.2 ACRES

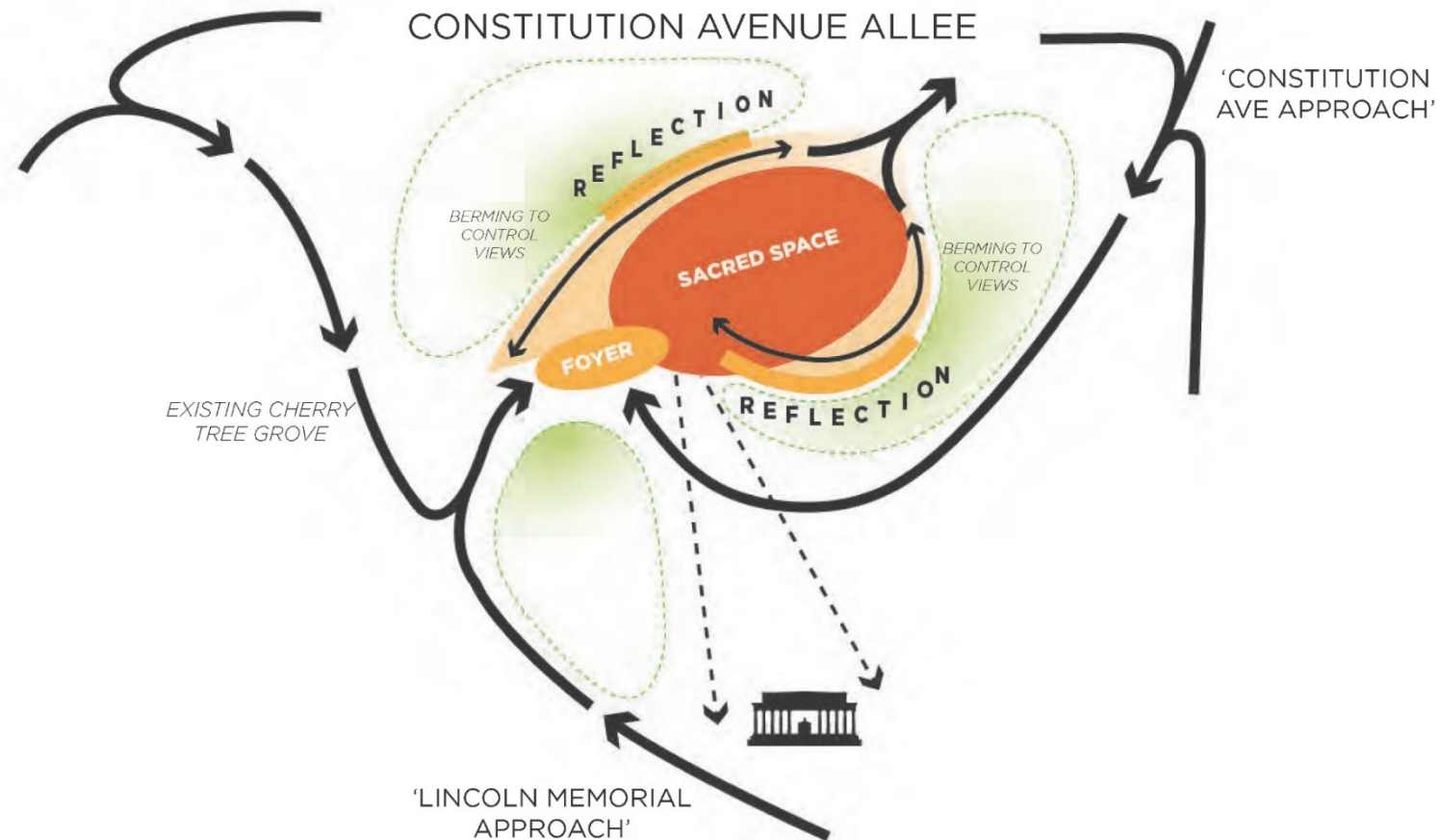
WWII MEMORIAL
4.0 ACRES



NATIONAL DESERT STORM AND DESERT SHIELD MEMORIAL

Constitution Avenue Terminus Area

Experiential Concept



NATIONAL DESERT STORM AND DESERT SHIELD MEMORIAL

Constitution Avenue Terminus Area

Potential Future Memorial Sites

The Constitution Avenue Terminus Area could accommodate other future memorials that would want to be located in proximity to the NDSWM. This would particularly be the case with the implementation of the *Monumental Core Framework Plan's* revised roadway network.



Potential commemorative sites



Approximate 'Reserve' Boundary

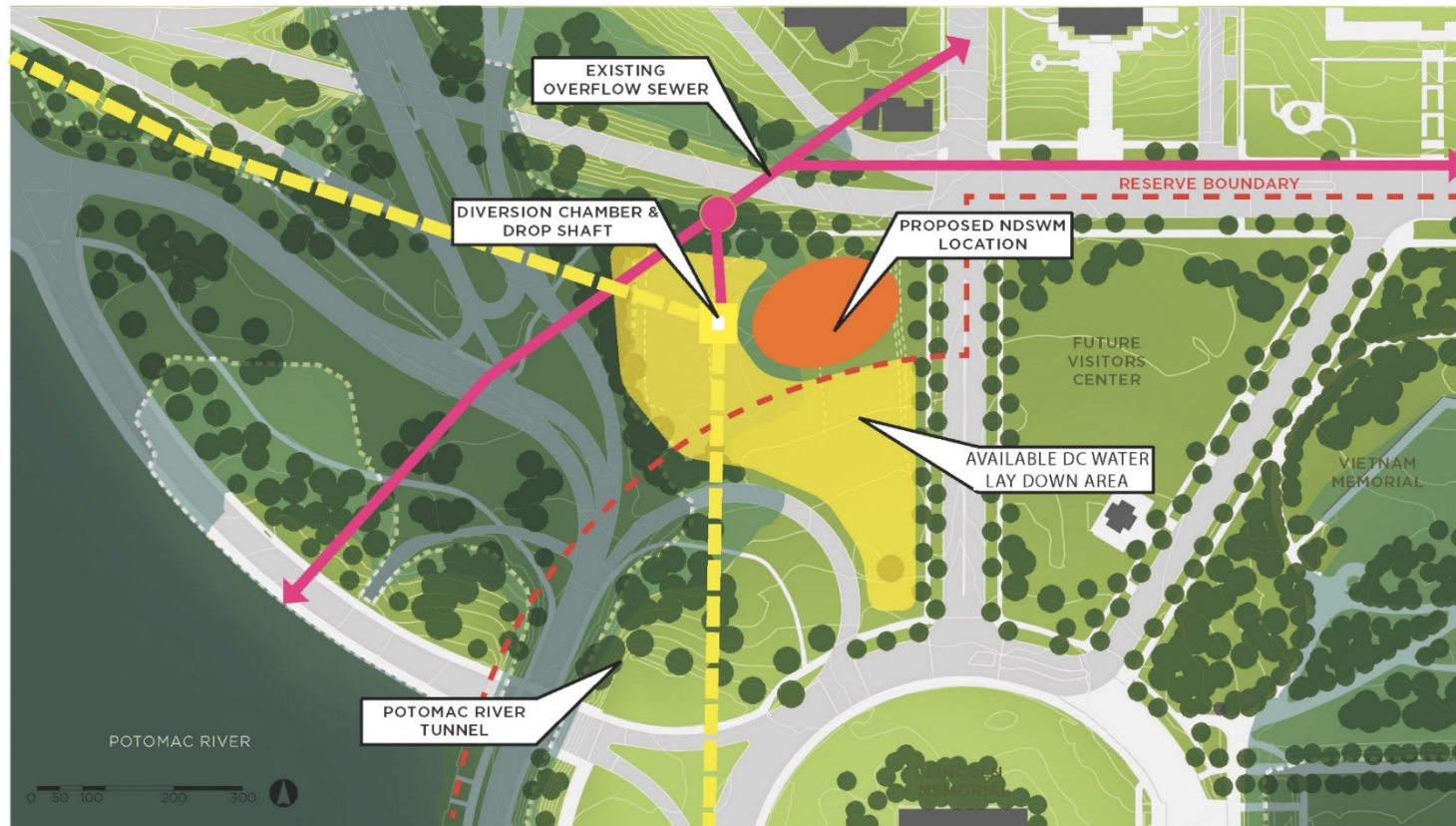


NATIONAL DESERT STORM AND DESERT SHIELD MEMORIAL

Constitution Avenue Terminus Area

Example of DC Water Potomac River Tunnel Project Configuration at the Site

DC Water is considering the Constitution Avenue Terminus Area for use in its Potomac River Tunnel project. The image below reflects one potential configuration of potential DC Water operations at the site with the Memorial.



NATIONAL DESERT STORM AND DESERT SHIELD MEMORIAL

NEPA and Section 106 Compliance

In order to meet its regulatory responsibilities, the NPS will conduct concurrent National Environmental Policy Act (NEPA) and National Historic Preservation Act (NHPA) reviews. The NPS will prepare an Environmental Assessment (EA) to identify impacts and potential mitigation strategies, if necessary, of the placement of the NDSWM. Similarly, NPS will conduct a review of historic resources under Section 106 of the NHPA. The NPS, in cooperation with the National Capital Planning Commission (NCPC), is evaluating an updated NEPA and Section 106 process for this memorial's site and design. The purpose of this revised process is to better align and support key decision points associated with each agency's NEPA and Section 106 responsibilities, and to ensure that the review is commensurate with the complexity of the project.

The first step in the memorial review process is to receive comment through public scoping. A **site selection** scoping period will be open between June 20, 2017 and July 24, 2017. These dates allow formal input from both NCPC and the U.S. Commission of Fine Arts to be included during the official comment period. During this scoping period, a joint public scoping and Section 106 introductory meeting is anticipated to be held in July 2017. Notice will be made to the public prior to the start of the scoping period.

Subsequent to this site selection scoping period, the NPS and NCPC will also conduct scoping review and a scoping meeting for **design** in the fall 2017. Following both scoping periods, an EA will be created to document potential environmental impacts. This is a deviation from NCPC's existing Environmental and Historic Preservation Procedures, which requires separate NEPA and Section 106 processes for site selection and the design of the memorial.

NATIONAL DESERT STORM AND DESERT SHIELD MEMORIAL

What Issues will the EA Address?

The NDSWM EA will address a full range of man-made and natural resource issues. These include:

Cultural Resources

- ▶ Historic Resources
- ▶ Cultural Landscapes
- ▶ Visual Resources
- ▶ Archeology

Other Issues

- ▶ Land Use
- ▶ Utilities
- ▶ Park Operations
- ▶ Visitor Use and Experience

Transportation

- ▶ Traffic Operations
- ▶ Parking
- ▶ Pedestrian Circulation

Natural and Physical Resources

- ▶ Soils
- ▶ Vegetation
- ▶ Water Resources
- ▶ Stormwater
- ▶ Floodplains