



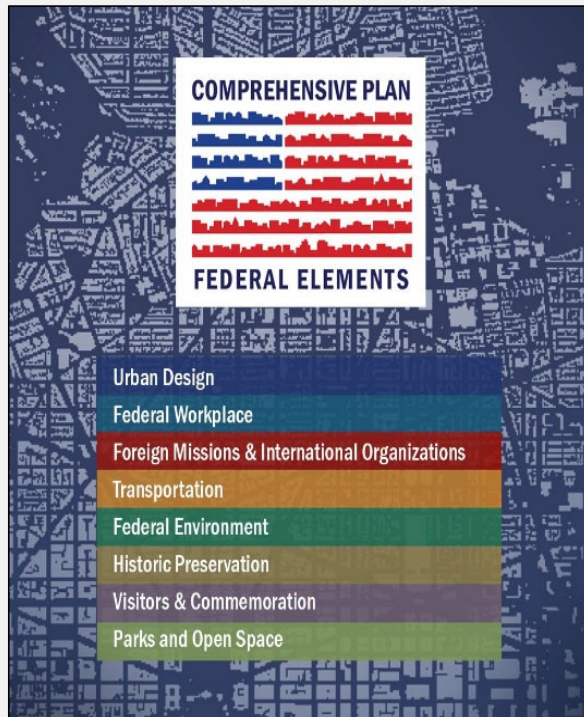
Federal Workplace Element Update

National Capital Region

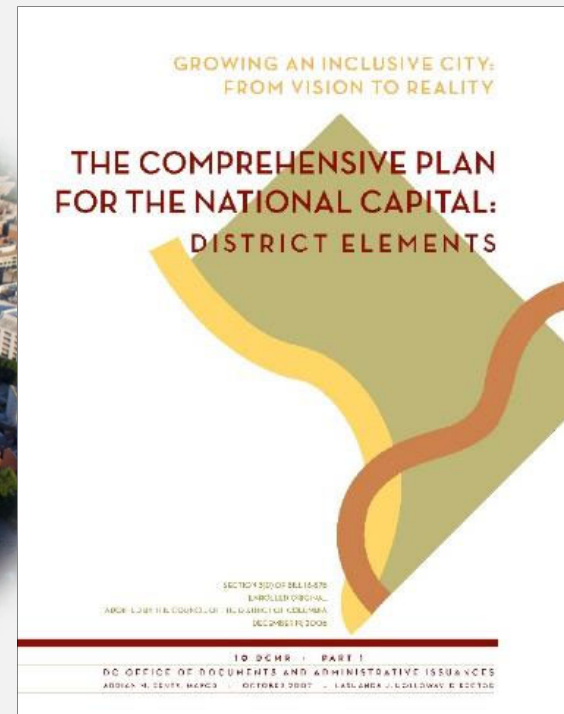
National Capital Planning Commission Staff

Authorization of release for a 60-day public comment period

The Comprehensive Plan for the National Capital



Federal Elements



District Elements

Key Highlights

- Reframed around four new 'Guiding Principles' that serve as the organizational framework.
- Introduces new topics that reflect current issues and trends.
- Improved clarity and reduced redundancy between other elements in the Comprehensive Plan.





Goal Statement

The federal government's goal is to emphasize Washington as the seat of the federal government; efficiently plan and locate federal workplaces so they contribute to the National Capital Region's economic well-being; promote resource protection; and provide sustainable and healthy work environments for its workforce.

Major Drivers Shaping Workplaces

Reduce the Federal Footprint

Maximize Building Performance

Improve Workplace Mobility

Changes to the Federal Workforce

Guiding Principles

1. Adapt to the Changing Needs of the Federal Workplace
2. Locate Federal Facilities Strategically
3. Design Sustainable and Healthy Work Environments
4. Integrate Federal Facilities with Their Surrounding Communities

Adapt to the Changing Needs of the Federal Workplace



GSA Headquarters



U.S. Coast Guard Headquarters,
St. Elizabeths Campus



Parcel I – Southeast Federal Center

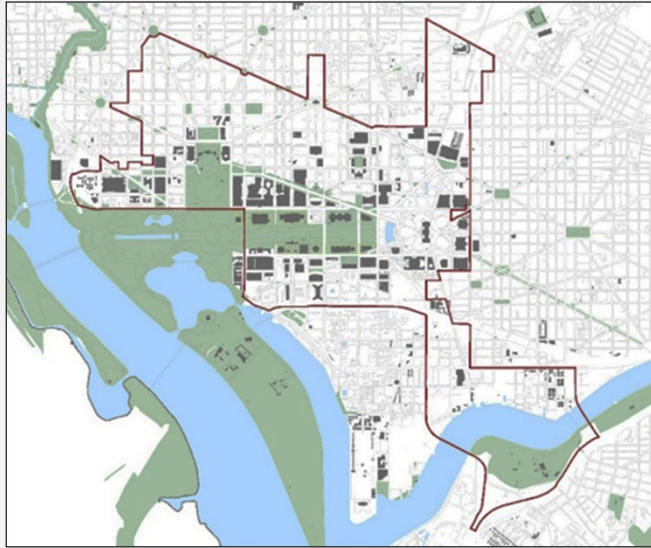
- Improve Utilization of Federally Owned Property
- Plan for the Reuse and Disposal of Federal Property

Adapt to the Changing Needs of the Federal Workplace

New Policies In This Guiding Principle

- FW.A.5 Determine if the surrounding infrastructure and services can adequately support the new workplace needs, when considering the relocation or consolidation of facilities.
- FW.A.7 Consider development strategies that minimize risks, associated with natural and manmade disasters or aging buildings and infrastructure by enhancing the resilience of federal property in the nation's capital.
- FW.A.15 Ensure adequate space is available to meet the continuing long-term needs of the federal government in the nation's capital.

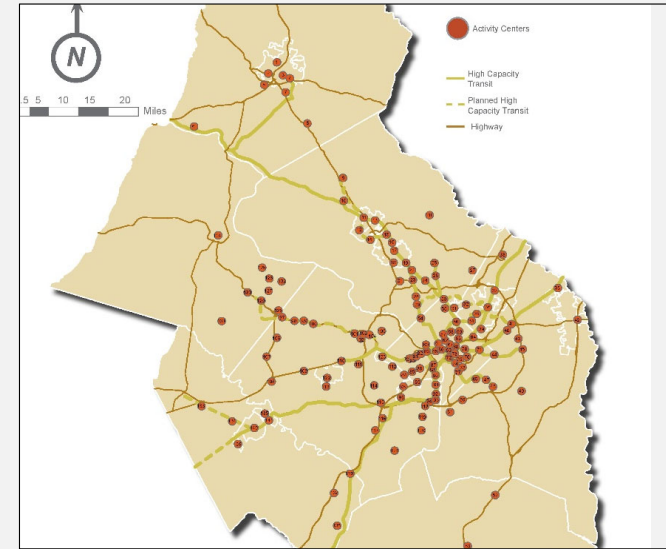
Locate Federal Facilities Strategically



Central Employment Area



Close to Transit



Regional Activity Centers

- Select Location-Efficient Sites
- Advance Local and Regional Planning Goals

Locate Federal Facilities Strategically

New Policies In This Guiding Principle

- FW.B.9 Locate federal workplaces in areas that can support growth and development, including Metropolitan Washington Council of Governments adopted regional activity centers.
- FW.B.11 Locate new federal facilities in places that support regional and local agency objectives and are integrated within their urban or regional context when feasible.

Design Sustainable and Healthy Work Environments



U.S. Census Bureau Headquarters



FDA White Oak Campus



SW Ecodistrict

- Plan for Sustainable Work Environments
- Design for Healthy Workplaces

Design Sustainable and Healthy Work Environments

New Policies In This Guiding Principle

- FW.C.6 Consider the existing site conditions, including topography, climate, vegetation, flora, fauna, and soils, when planning and designing buildings.
- FW.C.9 Provide convenient access to outdoor areas including green spaces, courtyards, terraces, and campus walking trails.
- FW.C.10 Provide outdoor spaces that allow opportunities for social interaction and physical activities for federal employees.

Integrating Federal Facilities with Their Surrounding Communities



Farmers Market at Woodrow Wilson Plaza



Pocket Park at U.S. Department of State Headquarters

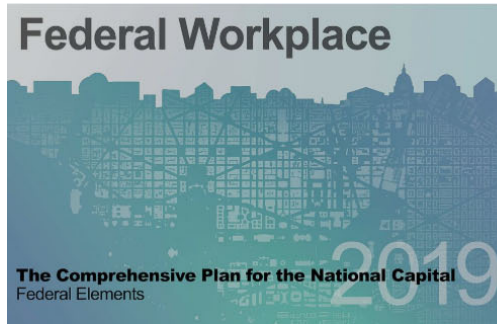
- Coordinate with the Local Jurisdiction and Surrounding Communities
- Advance Shared Goals and Interests

Integrate Federal Facilities with Their Surrounding Communities

New Policies In This Guiding Principle

- FW.D.4 Coordinate with federal and local jurisdictions, and the public, on interrelated issues such as traffic congestion, parking, security, stormwater management, and natural resource protection.
- FW.D.5 Collaborate with regional partners to advance Metropolitan Washington Council of Government's Region Forward Goals including land use, transportation, climate and energy, environment, housing, and economy.
- FW.D.10 Provide well-designed site security solutions that complement existing uses and activities in the public realm, ensure visual and physical connectivity, enhance streetscape aesthetics, and protect historic and environmental resources.

Next Steps



Read the Element



Open Comment Period



Open House

<https://www.ncpc.gov/initiatives/workplace>

- 60-day public comment period.
- Open Houses at NCPC on August 6 (6:00 pm) and August 7 (10:30 am).
- Following the public comment period, staff will revise the Federal Workplace Element and bring to the Commission for final adoption.